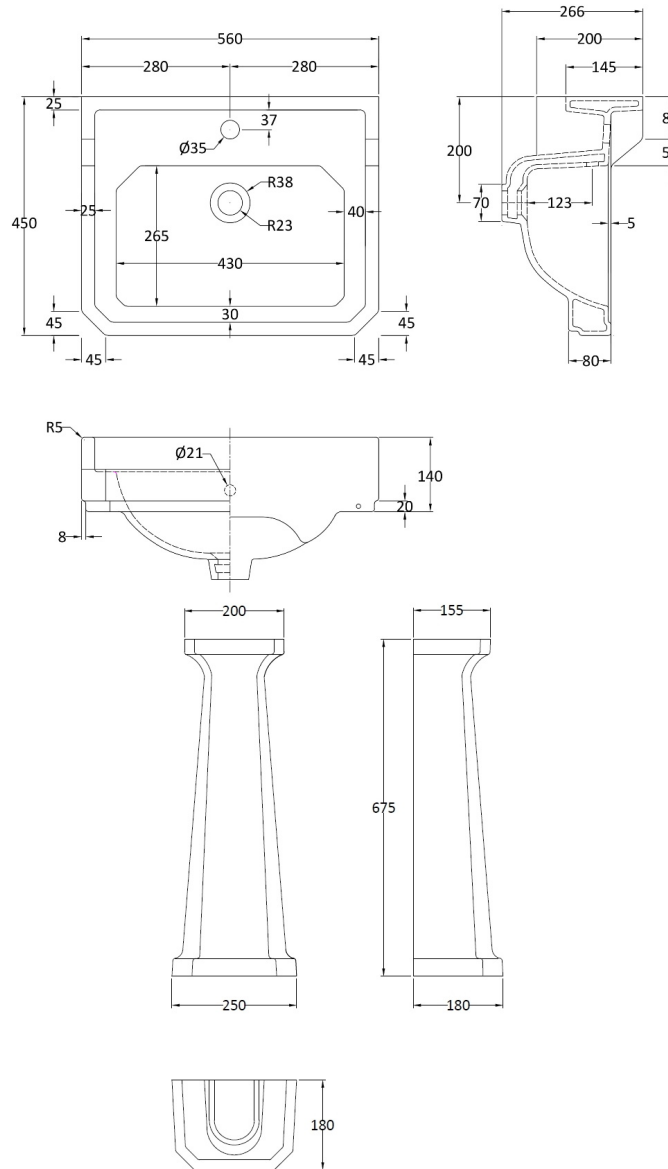


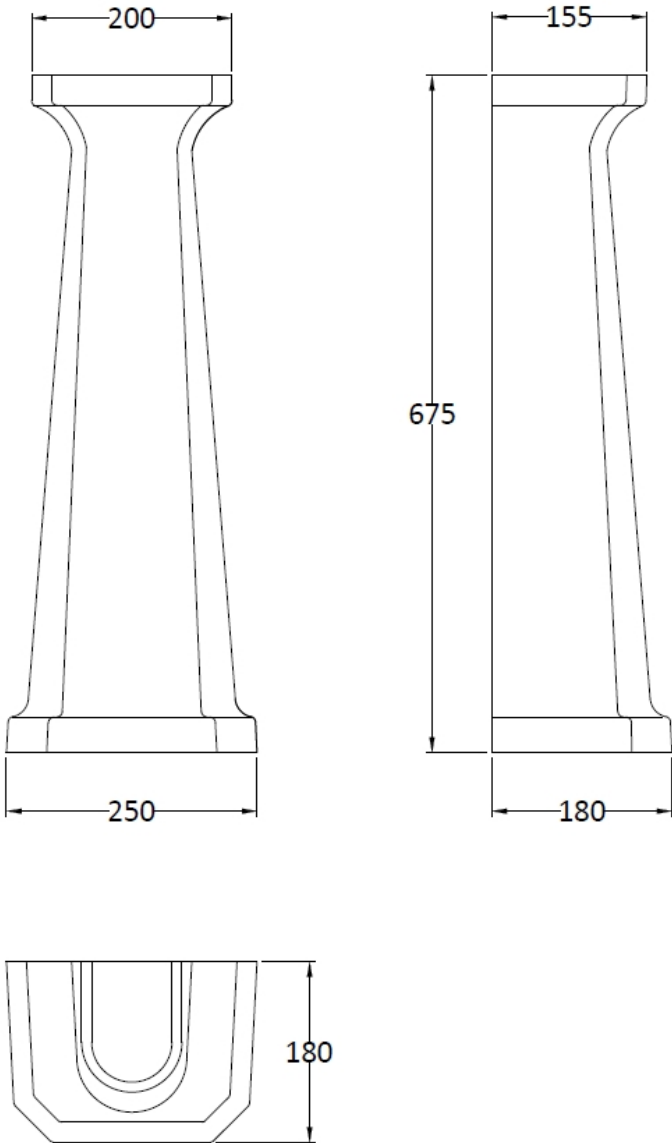
Description: Richmond 560mm 1 Th Basin & Pedestal



Barcode: 5055275867129

Sales Code: NCS883

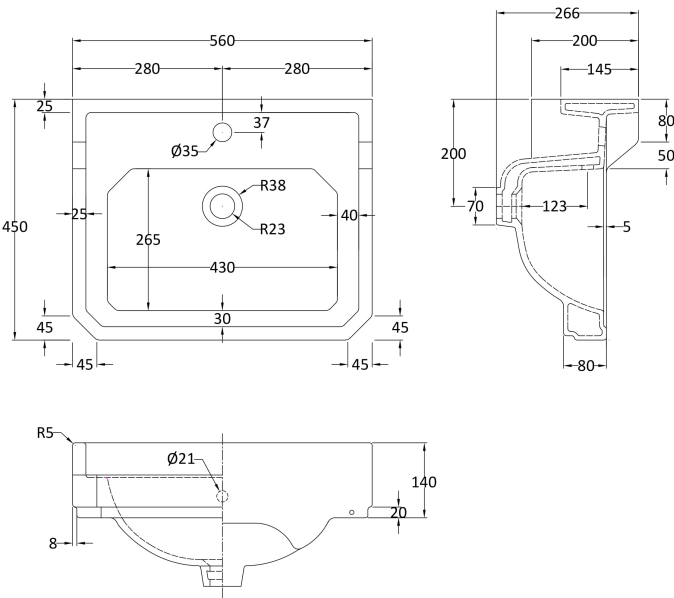
Description: Full Pedestal



| | | | |
|--------------------------------------|--------------------------------|-------------------------------|---------------------------------|
| Product Dimensions | | | |
| Height (mm): | | 670 | |
| Width (mm): | | 250 | |
| Depth (mm): | | 180 | |
| Nett Weight (kg): | | 11 | |
| Packaging Dimensions | | | |
| Height (mm): | | 140 | |
| Width (mm): | | 285 | |
| Depth (mm): | | 715 | |
| Gross Weight (kg): | | 11.6 | |
| Packaging Data | | | |
| Box Colour: | | Brown Cardboard Box - Printed | |
| Box Qty: | | 1 | |
| Label Size: | | 100 x 50 | |
| Label Colour: | | Not Applicable | |
| Label Qty: | | 0 | |
| Outer Box Dimensions (If Applicable) | | | |
| Height (mm): | | | |
| Width (mm): | | | |
| Depth (mm): | | | |
| Gross Weight (kg): | | | |
| Barcode: | | 5055369038688 | |
| Product Details | | | |
| Country of Origin: | | China | |
| Fitting Instruction: | | No | |
| Certification: | CE: N/A | WRAS: N/A | WRAS No: N/A |
| Product Material: | | Vitreous China | |
| Fixing Supplied: | | No | |
| | | | |
| Pans/Bidets: | Trap Style: Not Applicable | | Includes Seat: Not Applicable |
| | | | |
| Seats: | Seat Type: Not Applicable | | Material: Not Applicable |
| | Function: Not Applicable | | Hinge Type: Not Applicable |
| | Hinge Material: Not Applicable | | |
| | | | |
| Cisterns: | Operating Type: Not Applicable | | Fittings: Not Applicable |
| | Lever Type: Not Applicable | | |
| | | | |
| Basins: | Tap Hole: Not Applicable | | Chain Stay Hole: Not Applicable |
| | Template: Not Applicable | | Waste Type Req: Not Applicable |
| | Overflow Inc: Not Applicable | | Overflow Cover: Not Applicable |
| | Inner Bowl Depth (mm): N/A | | |

Sales Code: NCS884A

Description: 560mm Basin 1Th



Product Dimensions

| | |
|-------------------|------|
| Height (mm): | 266 |
| Width (mm): | 560 |
| Depth (mm): | 450 |
| Nett Weight (kg): | 16.7 |

Packaging Dimensions

| | |
|--------------------|------|
| Height (mm): | 287 |
| Width (mm): | 575 |
| Depth (mm): | 490 |
| Gross Weight (kg): | 17.5 |

Packaging Data

| | |
|---------------|-------------------------------|
| Box Colour: | Brown Cardboard Box - Printed |
| Box Qty: | 1 |
| Label Size: | 100 x 50 |
| Label Colour: | Not Applicable |
| Label Qty: | 0 |

Outer Box Dimensions (If Applicable)

| | |
|--------------------|---------------|
| Height (mm): | |
| Width (mm): | |
| Depth (mm): | |
| Gross Weight (kg): | |
| Barcode: | 5055369040032 |

Product Details

| | |
|----------------------|--------------------------------|
| Country of Origin: | China |
| Fitting Instruction: | No |
| Certification: | CE: N/A WRAS: N/A WRAS No: N/A |
| Product Material: | Vitreous China |
| Fixing Supplied: | No |

| | | |
|---------------------|----------------------------|-------------------------------|
| Pans/Bidets: | Trap Style: Not Applicable | Includes Seat: Not Applicable |
|---------------------|----------------------------|-------------------------------|

| | | |
|---------------|--------------------------------|----------------------------|
| Seats: | Seat Type: Not Applicable | Material: Not Applicable |
| | Function: Not Applicable | Hinge Type: Not Applicable |
| | Hinge Material: Not Applicable | |

| | | |
|------------------|--------------------------------|--------------------------|
| Cisterns: | Operating Type: Not Applicable | Fittings: Not Applicable |
| | Lever Type: Not Applicable | |

| | | |
|----------------|------------------------------|-------------------------|
| Basins: | Tap Hole: One Taphole | Chain Stay Hole: No |
| | Template: Not Required | Waste Type Req: Slotted |
| | Overflow Inc: Yes | Overflow Cover: Yes |
| | Inner Bowl Depth (mm): 110mm | |