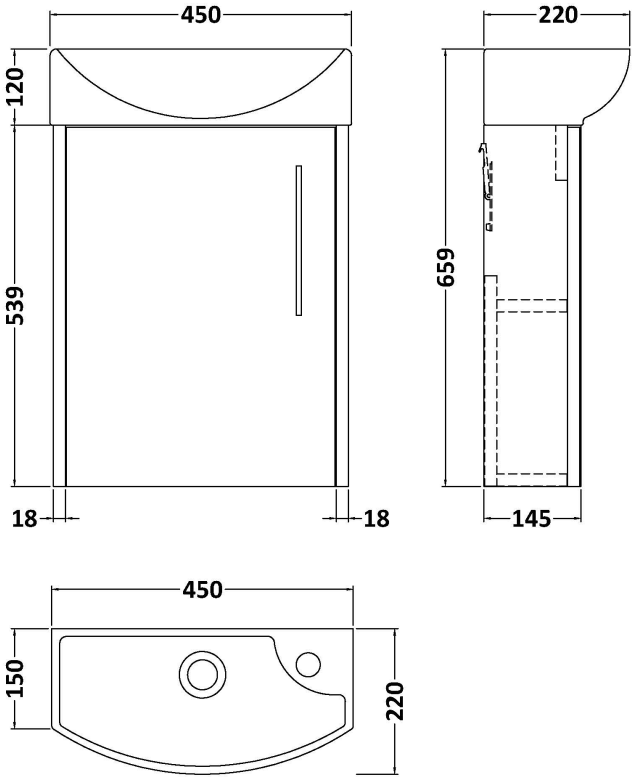


Sales Code: JNU2261L

Description: 440 Wh 1-Door Unit & 1Th Basin Lh

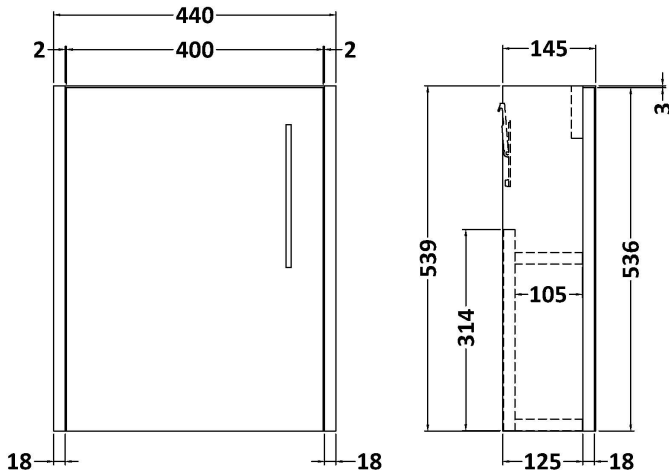


Packaging Details

Barcode: 5056462674155

Sales Code: MOJ2261

Description: 440 Single Door Wall Hung Unit



Product Dimensions

| | |
|-------------------|-----|
| Height (mm): | 539 |
| Width (mm): | 440 |
| Depth (mm): | 145 |
| Nett Weight (kg): | 6.5 |

Packaging Dimensions

| | |
|--------------------|-----|
| Height (mm): | 460 |
| Width (mm): | 410 |
| Depth (mm): | 235 |
| Gross Weight (kg): | 7.2 |

Packaging Data

| | |
|---------------|---------------------|
| Box Colour: | Brown Cardboard Box |
| Box Qty: | 1 |
| Label Size: | 50 x 100 |
| Label Colour: | White Label |
| Label Qty: | 2 |

Outer Box Dimensions (If Applicable)

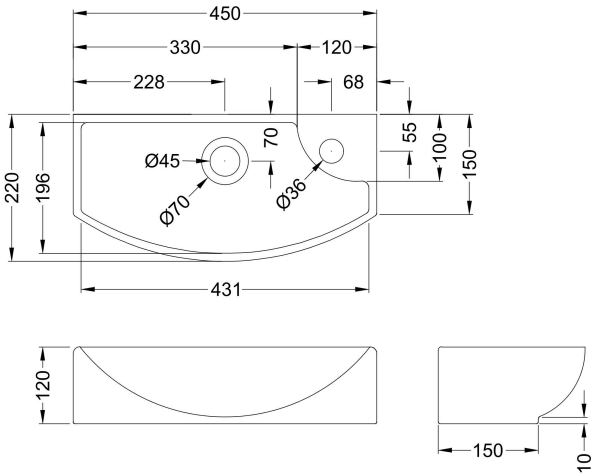
| | |
|--------------------|---------------|
| Height (mm): | |
| Width (mm): | |
| Depth (mm): | |
| Gross Weight (kg): | |
| Barcode: | 5056462659640 |

Product Details

| | |
|--------------------------|------------------------------|
| Country of Origin: | United Kingdom |
| Fitting Instruction: | No |
| CE & UKCA: | N/A |
| FSC Certified Materials: | Yes |
| Colour: | Graphite Grey Woodgrain |
| Construction Method: | Cam & Wood Dowel |
| Construction Type: | Rigid |
| Cabinet Finish: | MFC Textured Woodgrain |
| Fascia Finish: | MFC Textured Woodgrain |
| Cabinet Thickness (mm): | 18 |
| Fascia Thickness (mm): | 18 |
| Drawer Included: | No |
| Drawer Type: | Not Applicable |
| No of Shelves: | 1 |
| Hinge Type: | 95 Degree Clip-On Soft Close |
| Hinge Included: | Yes, Supplied |
| Adjustable Legs: | No, Not Required |
| Fixings Included: | Yes |
| Handle Style: | Modern |
| Waste Shroud: | Not Applicable |
| Handle Included: | Yes, Supplied |
| Handle Type: | D-Shape |

Sales Code: NBV160

Description: Basin Lh 1Th 450 X 220 X 120



Product Dimensions

| | |
|-------------------|-----|
| Height (mm): | 120 |
| Width (mm): | 450 |
| Depth (mm): | 220 |
| Nett Weight (kg): | 6.3 |

Packaging Dimensions

| | |
|--------------------|-----|
| Height (mm): | 150 |
| Width (mm): | 240 |
| Depth (mm): | 475 |
| Gross Weight (kg): | 6.8 |

Packaging Data

| | |
|---------------|---------------------|
| Box Colour: | Brown Cardboard Box |
| Box Qty: | 1 |
| Label Size: | 100 x 50 |
| Label Colour: | White Label |
| Label Qty: | 2 |

Outer Box Dimensions (If Applicable)

| | |
|--------------------|---------------|
| Height (mm): | |
| Width (mm): | |
| Depth (mm): | |
| Gross Weight (kg): | |
| Barcode: | 5055275890592 |

Product Details

| | | | |
|---------------------------|----------------|----------|--|
| Country of Origin: | China | | |
| Fitting Instruction: | No | | |
| Certification: CE & UKCA: | WRAS: | WRAS No: | |
| Product Material: | Vitreous China | | |
| Fixing Supplied: | Not Applicable | | |

| | | |
|--------------|----------------------------|-------------------------------|
| Pans/Bidets: | Trap Style: Not Applicable | Includes Seat: Not Applicable |
|--------------|----------------------------|-------------------------------|

| | | |
|--------|--------------------------------|----------------------------|
| Seats: | Seat Type: Not Applicable | Material: Not Applicable |
| | Function: Not Applicable | Hinge Type: Not Applicable |
| | Hinge Material: Not Applicable | |

| | | |
|-----------|--------------------------------|--------------------------|
| Cisterns: | Operating Type: Not Applicable | Fittings: Not Applicable |
| | Lever Type: Not Applicable | |

| | | |
|---------|-----------------------------|---------------------------|
| Basins: | Tap Hole: One Taphole | Chain Stay Hole: No |
| | Template: Not Required | Waste Type Req: Unslotted |
| | Overflow Inc: Yes | Overflow Cover: Yes |
| | Inner Bowl Depth (mm): 90mm | |