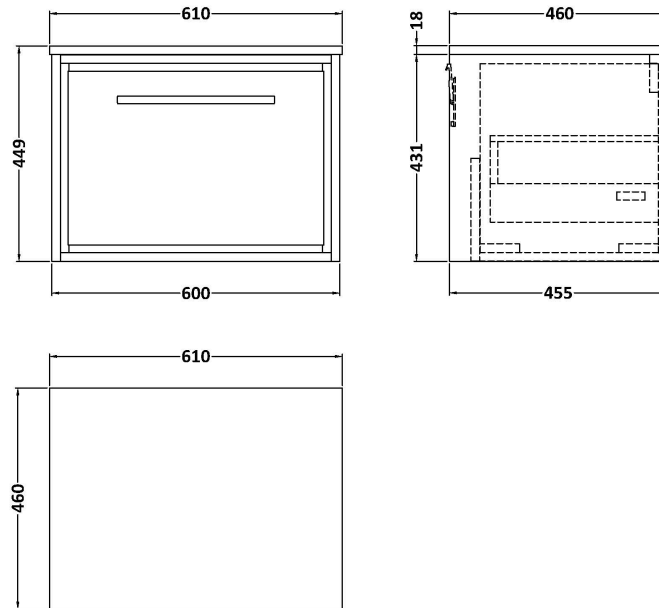


Sales Code: LIL2322GMT

Description: 600 Wh 1-Drawer Unit & Marble Top

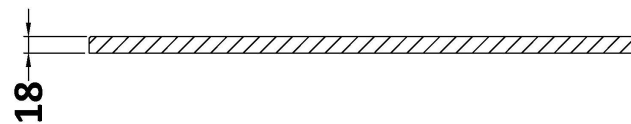
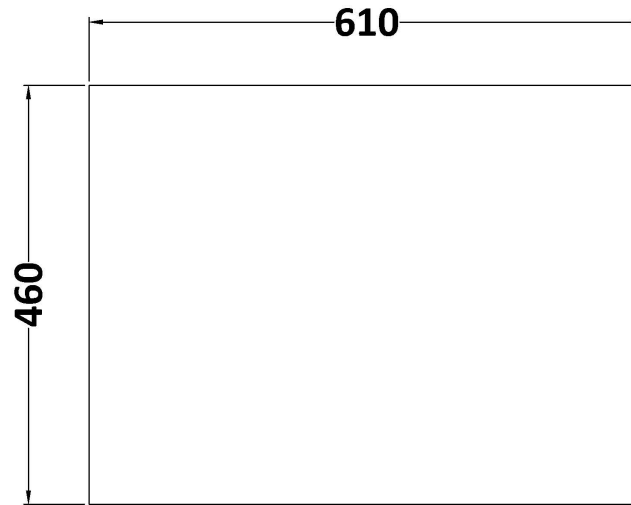


### Packaging Details

Barcode: 5056817717445

**Sales Code:** LOM36046

**Description:** 600 Marble Top (610 X 460mm)



**Product Dimensions**

|                   |      |
|-------------------|------|
| Height (mm):      | 18   |
| Width (mm):       | 610  |
| Depth (mm):       | 460  |
| Nett Weight (kg): | 13.5 |

**Packaging Dimensions**

|                    |     |
|--------------------|-----|
| Height (mm):       | 35  |
| Width (mm):        | 650 |
| Depth (mm):        | 500 |
| Gross Weight (kg): | 14  |

**Packaging Data**

|               |                     |
|---------------|---------------------|
| Box Colour:   | Brown Cardboard Box |
| Box Qty:      | 1                   |
| Label Size:   | 100 x 50            |
| Label Colour: | White Label         |
| Label Qty:    | 1                   |

**Outer Box Dimensions (If Applicable)**

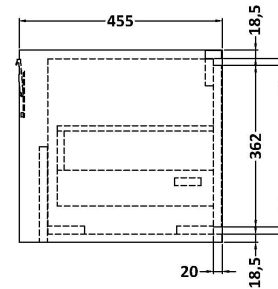
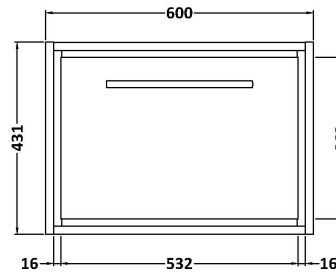
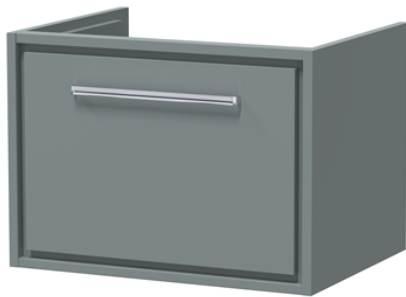
|                    |               |
|--------------------|---------------|
| Height (mm):       |               |
| Width (mm):        |               |
| Depth (mm):        |               |
| Gross Weight (kg): |               |
| Barcode:           | 5056678477205 |

**Product Details**

|                          |                |
|--------------------------|----------------|
| Country of Origin:       | China          |
| Fitting Instruction:     | No             |
| CE & UKCA:               | N/A            |
| FSC Certified Materials: | Yes            |
| Colour:                  | Grey           |
| Construction Method:     | Not Applicable |
| Construction Type:       | Not Applicable |
| Cabinet Finish:          | Not Applicable |
| Fascia Finish:           | Natural Marble |
| Cabinet Thickness (mm):  |                |
| Fascia Thickness (mm):   | 14             |
| Drawer Included:         | Not Applicable |
| Drawer Type:             | Not Applicable |
| No of Shelves:           | 0              |
| Hinge Type:              | Not Applicable |
| Hinge Included:          | Not Applicable |
| Adjustable Legs:         | Not Applicable |
| Fixings Included:        | No             |
| Handle Style:            | Not Applicable |
| Waste Shroud:            | Not Applicable |
| Handle Included:         | Not Applicable |
| Handle Type:             | Not Applicable |

**Sales Code:** NFF2322

**Description:** 600 Single Drawer Unit (455 Deep)



**Product Dimensions**

|                   |      |
|-------------------|------|
| Height (mm):      | 431  |
| Width (mm):       | 600  |
| Depth (mm):       | 455  |
| Nett Weight (kg): | 22.5 |

**Packaging Dimensions**

|                    |     |
|--------------------|-----|
| Height (mm):       | 470 |
| Width (mm):        | 632 |
| Depth (mm):        | 480 |
| Gross Weight (kg): | 23  |

**Packaging Data**

|               |                               |
|---------------|-------------------------------|
| Box Colour:   | Brown Cardboard Box - Printed |
| Box Qty:      | 0                             |
| Label Size:   | 0 x 0                         |
| Label Colour: | White Label                   |
| Label Qty:    | 2                             |

**Outer Box Dimensions (If Applicable)**

|                    |               |
|--------------------|---------------|
| Height (mm):       |               |
| Width (mm):        |               |
| Depth (mm):        |               |
| Gross Weight (kg): |               |
| Barcode:           | 5056678424049 |

**Product Details**

|                          |                                |
|--------------------------|--------------------------------|
| Country of Origin:       | China                          |
| Fitting Instruction:     | No                             |
| CE & UKCA:               | N/A                            |
| FSC Certified Materials: | Yes                            |
| Colour:                  | Monument Grey                  |
| Construction Method:     | Cam & Wood Dowel               |
| Construction Type:       | Rigid                          |
| Cabinet Finish:          | MFC Textured Woodgrain         |
| Fascia Finish:           | MFC Textured Woodgrain         |
| Cabinet Thickness (mm):  | 18                             |
| Fascia Thickness (mm):   | 18                             |
| Drawer Included:         | Yes                            |
| Drawer Type:             | 80mm High Metal S/C Inc Galler |
| No of Shelves:           | 0                              |
| Hinge Type:              | Not Applicable                 |
| Hinge Included:          | Not Applicable                 |
| Adjustable Legs:         | No, Not Required               |
| Fixings Included:        | Yes                            |
| Handle Style:            | Contemporary                   |
| Waste Shroud:            | Yes                            |
| Handle Included:         | Yes, Supplied                  |
| Handle Type:             | D-Shape                        |