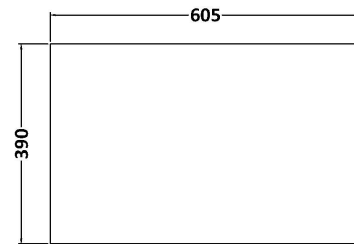
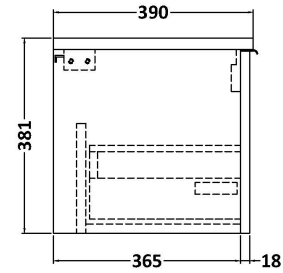
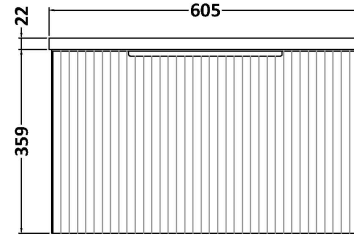
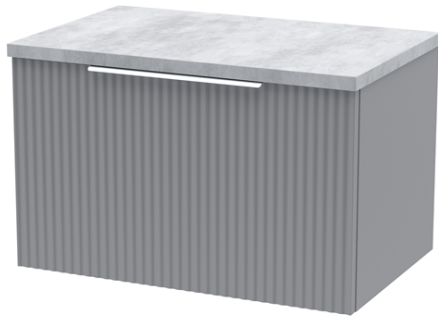


**Sales Code:** DFF294LBG

**Description:** 600 W/H Single Drawer Vanity & Laminate

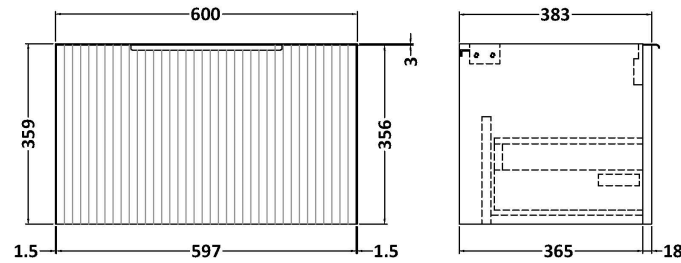
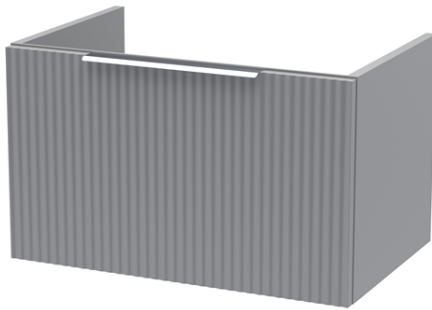


**Packaging Details**

Barcode: 5056462677798

Sales Code: FLU294

Description: 600 W/H Single Drawer Unit



### Product Dimensions

|                   |     |
|-------------------|-----|
| Height (mm):      | 359 |
| Width (mm):       | 600 |
| Depth (mm):       | 383 |
| Nett Weight (kg): | 13  |

### Packaging Dimensions

|                    |      |
|--------------------|------|
| Height (mm):       | 380  |
| Width (mm):        | 620  |
| Depth (mm):        | 405  |
| Gross Weight (kg): | 13.5 |

### Packaging Data

|               |                               |
|---------------|-------------------------------|
| Box Colour:   | Brown Cardboard Box - Printed |
| Box Qty:      | 0                             |
| Label Size:   | 0 x 0                         |
| Label Colour: | Not Applicable                |
| Label Qty:    | 0                             |

### Outer Box Dimensions (If Applicable)

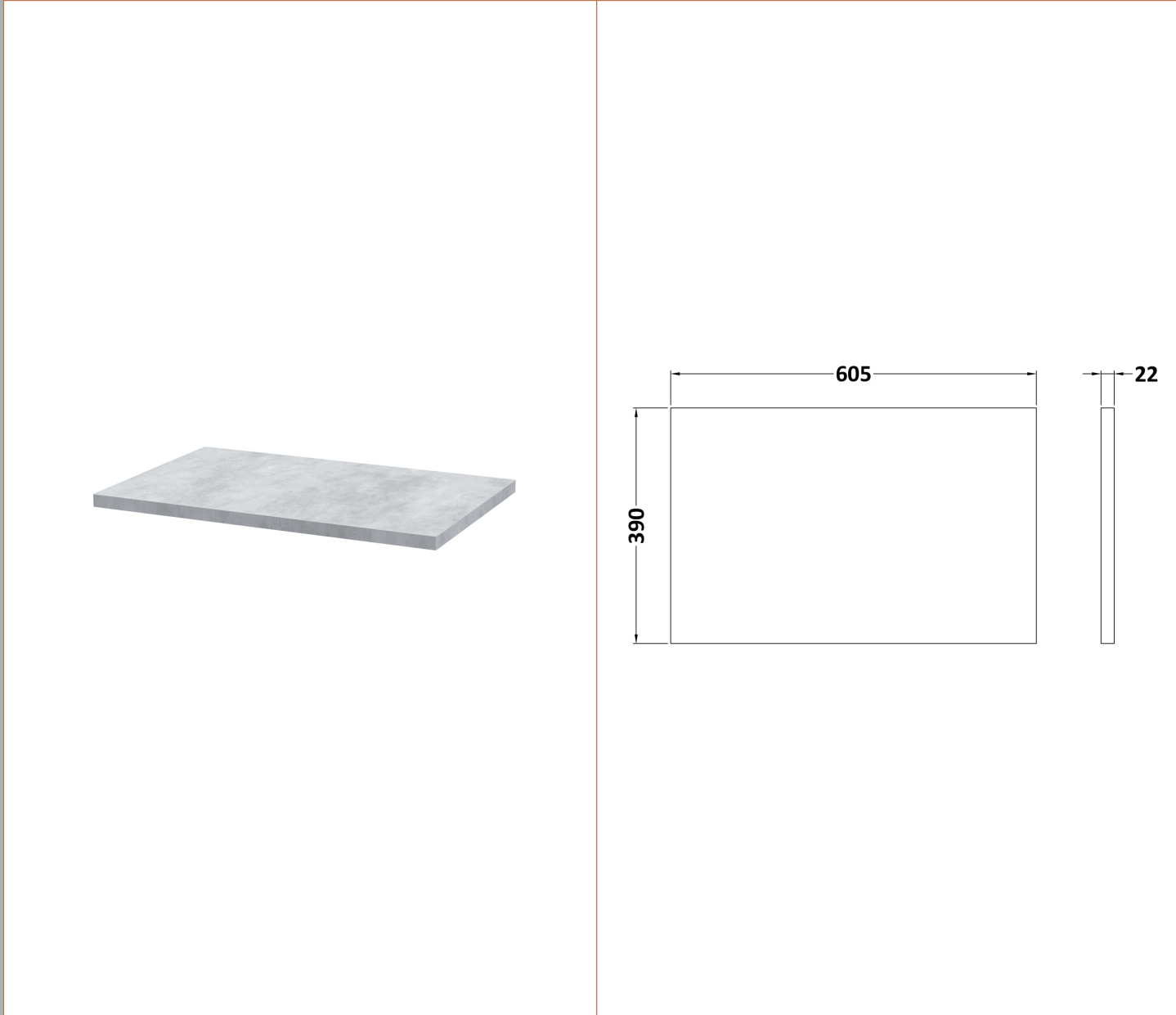
|                    |               |
|--------------------|---------------|
| Height (mm):       |               |
| Width (mm):        |               |
| Depth (mm):        |               |
| Gross Weight (kg): |               |
| Barcode:           | 5056462654676 |

### Product Details

|                          |                                |
|--------------------------|--------------------------------|
| Country of Origin:       | China                          |
| Fitting Instruction:     | No                             |
| CE Certification:        |                                |
| FSC Certified Materials: | Yes                            |
| Colour:                  | Satin Grey                     |
| Construction Method:     | Cam & Wood Dowel               |
| Construction Type:       | Rigid                          |
| Cabinet Finish:          | MFC Painted Gloss              |
| Fascia Finish:           | Mdf Painted Gloss              |
| Cabinet Thickness (mm):  | 16                             |
| Fascia Thickness (mm):   | 18                             |
| Drawer Included:         | Yes                            |
| Drawer Type:             | 80mm High Metal S/C Inc Galler |
| No of Shelves:           | 0                              |
| Hinge Type:              | Not Applicable                 |
| Hinge Included:          | No                             |
| Adjustable Legs:         | No, Not Required               |
| Fixings Included:        | Yes                            |
| Handle Style:            | Modern                         |
| Waste Shroud:            | Yes                            |
| Handle Included:         | Yes, Supplied                  |
| Handle Type:             | D-Shape                        |

**Sales Code:** LBG600

**Description:** Laminate Worktop 605X390x22mm



**Product Dimensions**

|                   |     |
|-------------------|-----|
| Height (mm):      | 22  |
| Width (mm):       | 605 |
| Depth (mm):       | 390 |
| Nett Weight (kg): | 2   |

**Packaging Dimensions**

|                    |     |
|--------------------|-----|
| Height (mm):       | 25  |
| Width (mm):        | 610 |
| Depth (mm):        | 455 |
| Gross Weight (kg): | 2   |

**Packaging Data**

|               |                     |
|---------------|---------------------|
| Box Colour:   | Brown Cardboard Box |
| Box Qty:      | 1                   |
| Label Size:   | 100 x 50            |
| Label Colour: | White Label         |
| Label Qty:    | 1                   |

**Outer Box Dimensions (If Applicable)**

|                    |               |
|--------------------|---------------|
| Height (mm):       |               |
| Width (mm):        |               |
| Depth (mm):        |               |
| Gross Weight (kg): |               |
| Barcode:           | 5056211874164 |

**Product Details**

|                          |                  |
|--------------------------|------------------|
| Country of Origin:       | United Kingdom   |
| Fitting Instruction:     | No               |
| CE Certification:        | N/A              |
| FSC Certified Materials: | Yes              |
| Colour:                  | Bellato Grey     |
| Construction Method:     | Not Applicable   |
| Construction Type:       | Not Applicable   |
| Cabinet Finish:          | Not Applicable   |
| Fascia Finish:           | MFC Laminated    |
| Cabinet Thickness (mm):  |                  |
| Fascia Thickness (mm):   | 22               |
| Drawer Included:         | No               |
| Drawer Type:             | Not Applicable   |
| No of Shelves:           | 0                |
| Hinge Type:              | Not Applicable   |
| Hinge Included:          | No               |
| Adjustable Legs:         | No, Not Required |
| Fixings Included:        | No               |
| Handle Style:            | Not Applicable   |
| Waste Shroud:            | Not Applicable   |
| Handle Included:         | No               |
| Handle Type:             | Not Applicable   |