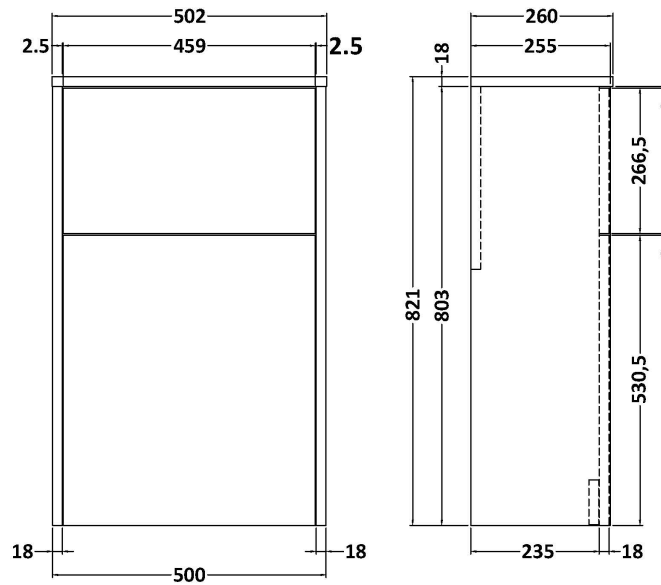


Sales Code: NPF1841

Description: 500 W.C. Unit (H-821Xw-500Xd-255)



### Product Dimensions

|                   |     |
|-------------------|-----|
| Height (mm):      | 821 |
| Width (mm):       | 502 |
| Depth (mm):       | 260 |
| Nett Weight (kg): | 11  |

### Packaging Dimensions

|                    |      |
|--------------------|------|
| Height (mm):       | 830  |
| Width (mm):        | 520  |
| Depth (mm):        | 275  |
| Gross Weight (kg): | 11.5 |

### Packaging Data

|               |                     |
|---------------|---------------------|
| Box Colour:   | Brown Cardboard Box |
| Box Qty:      | 1                   |
| Label Size:   | 50 x 100            |
| Label Colour: | White Label         |
| Label Qty:    | 2                   |

### Outer Box Dimensions (If Applicable)

|                    |               |
|--------------------|---------------|
| Height (mm):       |               |
| Width (mm):        |               |
| Depth (mm):        |               |
| Gross Weight (kg): |               |
| Barcode:           | 5056462657370 |

### Product Details

|                          |                        |
|--------------------------|------------------------|
| Country of Origin:       | United Kingdom         |
| Fitting Instruction:     | No                     |
| CE & UKCA:               |                        |
| FSC Certified Materials: | Yes                    |
| Colour:                  | Halifax Oak            |
| Construction Method:     | Cam & Wood Dowel       |
| Construction Type:       | Rigid                  |
| Cabinet Finish:          | MFC Textured Woodgrain |
| Fascia Finish:           | MFC Textured Woodgrain |
| Cabinet Thickness (mm):  | 18                     |
| Fascia Thickness (mm):   | 18                     |
| Drawer Included:         | Not Applicable         |
| Drawer Type:             | Not Applicable         |
| No of Shelves:           | 0                      |
| Hinge Type:              | Not Applicable         |
| Hinge Included:          | No                     |
| Adjustable Legs:         | No, Not Required       |
| Fixings Included:        | Yes                    |
| Handle Style:            | Not Applicable         |
| Waste Shroud:            | No                     |
| Handle Included:         | No                     |
| Handle Type:             | Not Applicable         |