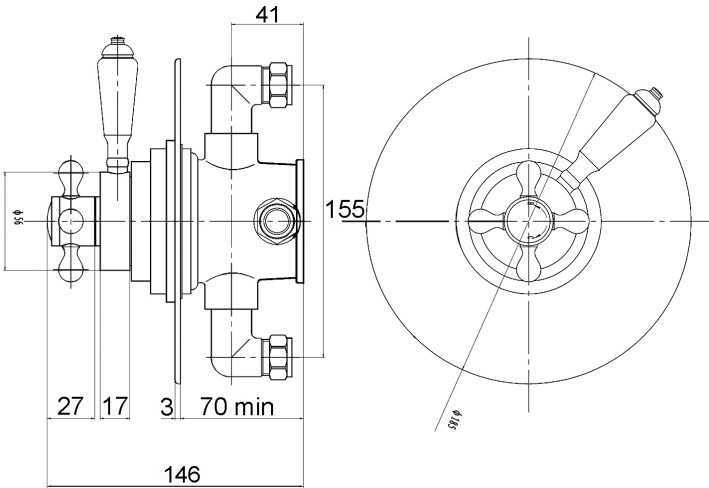


Sales Code: TSVT006

Description: Traditional Concealed Dual Shower Valve



| Product Dimensions   |                       |
|--|-----------------------|
| Length (mm):   |                       |
| Width (mm):  | 185                   |
| Height (mm):   | 196                   |
| Depth (mm):  | 146                   |
| Nett Weight (kg):  | 3.28                  |
| Packaging Dimensions   |                       |
| Length (mm):   | 240                   |
| Width (mm):  | 240                   |
| Height (mm):   |                       |
| Gross Weight (kg):   | 3.28                  |
| Packaging Data   |                       |
| Box Colour:  | White Cardboard Box   |
| Box Qty:   | 3                     |
| Label Size:  | 100 x 50              |
| Label Colour:  | White Label           |
| Label Qty:   | 3                     |
| Outer Box Dimensions (If Applicable)   |                       |
| Length (mm):   |                       |
| Width (mm):  | 500                   |
| Height (mm):   | 410                   |
| Depth (mm):  | 265                   |
| Gross Weight (kg):   |                       |
| Barcode:   | 5056211804215         |
| Product Details  |                       |
| Country of Origin:   | United Kingdom        |
| Fitting Instruction:   | No                    |
| Product Material:  | Brass                 |
| Mount Type:  | Recessed              |
| Outlet Elbow Supplied:   | No                    |
| Easy Clean:  | Not Applicable        |
| Head Included:   | No                    |
| Handset Included:  | No                    |
| Body Jets Included:  | No                    |
| No of Body Jets:   | Not Applicable        |
| Operating Pressure (bar):  | 0.1                   |
| Valve/Cartridge Type:  | 1/4 Turn Ceramic Disc |
| Flow Rates (L/min): 0.1 bar: 5.5 0.5 bar: 14.5 1 bar: 22 2 bar: 30 3 bar: 35 |                       |
| TMV2 Approved: No  | Approval No: N/A      |
| TMV3 Approved: No  | Approval No: N/A      |
| WRAS Approved: No  | Approval No: N/A      |
| Head Function:   | Not Applicable        |
| Handset Function:  | Not Applicable        |
| Body Jet Info:   | Not Applicable        |
| Pipe Size:   | 15 mm (1/2" Bsp)      |
| Pipe Centres:  | 150                   |
| Colour/Finish:   | Chrome                |
| Hose Included:   | Not Applicable        |
| No. of Outlets:  | 1                     |