

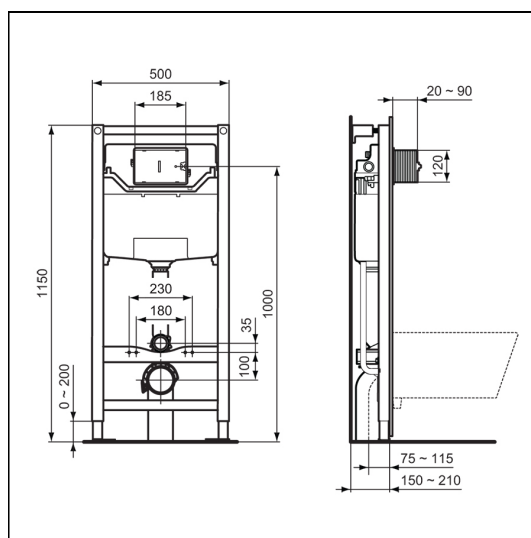
ProSys 1150mm height, pneumatic wall hung WC frame

ILLUSTRATED

- R0313** ProSys 1150mm height, pneumatic wall hung WC frame, 120 depth, front actuation
- R0116** Oleas P1 pneumatic dual flushplate Ideal Standard - chrome

OPTIONS

- R0119** Oleas P2 pneumatic dual flushplate Ideal Standard - white
- S0857** Oleas P2 pneumatic dual flushplate Armitage Shanks - chrome
- R0124** Oleas P3 pneumatic dual flushplate Ideal Standard - white
- R0110** Solea P2 pneumatic dual flushplate Ideal Standard - white
- S0775** Septa Pro P1 pneumatic metal dual flushplate Armitage Shanks
- S0860** Septa Pro P2 pneumatic metal dual small flushplate Armitage Shanks
- S0776** Septa Pro P3 pneumatic metal single small flushplate Armitage Shanks
- R0136** Septa Pro P4 pneumatic dual small flushplate with raised adjustable buttons
- P0109** Septa Pro XS pneumatic push button no logo - chrome
- R0184** Septa Pro XS pneumatic push button, no logo
- R0137** Septa Pro inspection plate white
- R0099** ProSys electronic conversion kit for infra-red actuated flushplates (Septa Pro E1 & E2) (120 depth frames and cisterns only)
- R0174** ProSys WC noise insulation kit (avoids contact between WC bowls and tiles)
- R0106** ProSys frame noise insulation kit (avoids direct contact between frame and floor)

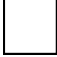



ILLUSTRATED PRODUCT DETAILS

Weights

- R0313** 12.20 KG
- R0116** 0.38 KG

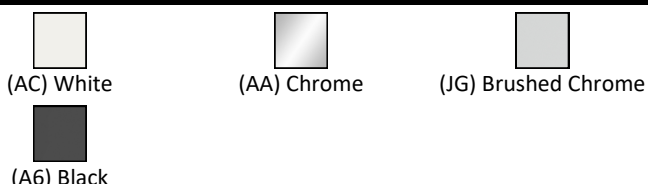
Finishes

- R0313**  Neutral / No Finish (67)
- R0116**  White (AC)

Materials

- R0313** Mixed Material
- R0116** Mixed Material

FINISH OPTIONS



Special Notes

Suitable for use with selected Ideal Standard & Armitage Shanks wall hung WC bowls at 6/4 litre or 4.5/3 litre dual flush. For use with Oleas, solea and Septa Pro pneumatic flushplates or Altes/Symfo or Septa Pro electronic plates with the appropriate conversion kit. Please refer to the

ACCREDITATIONS



FEATURES



ProSys 1150mm height, pneumatic wall hung WC frame

flushplate instructions to clarify wall thickness before fitting the frame.