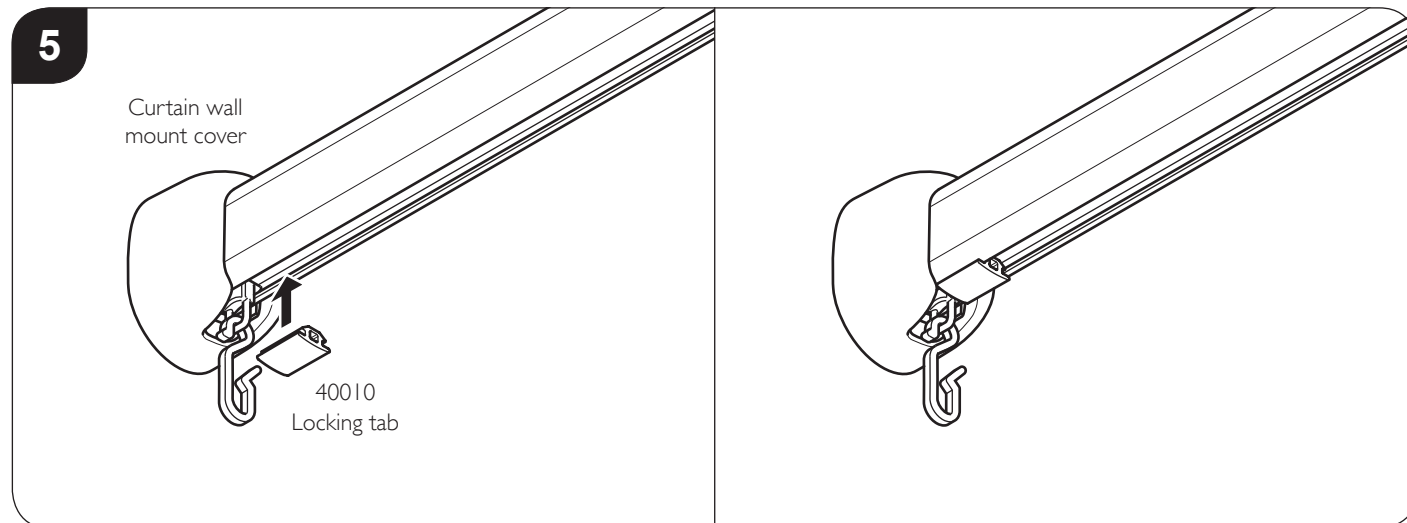


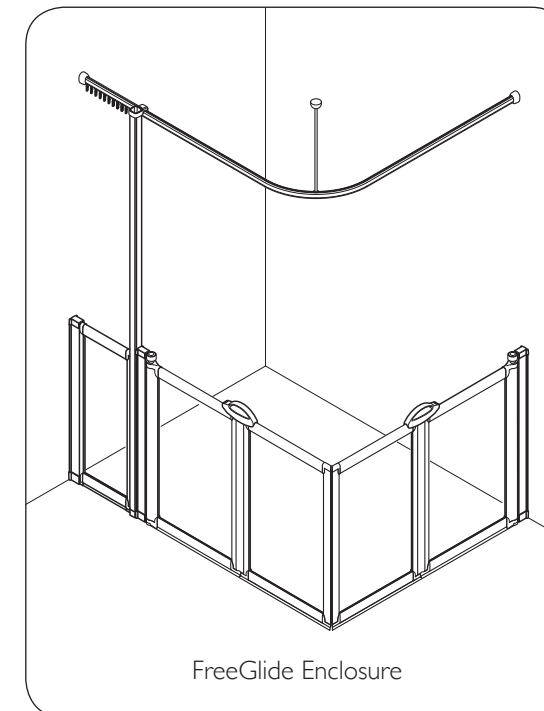
Adjust the mounting ring so that the 'mount' hooks over the curtain rail and it is fully seated down on top of the rail. Inset and tighten the 20mm screw (60066) to clamp onto the pole. Using a 3mm drill bit, drill a hole through the curtain pole mount into the curtain rail. Fix together using 10mm screw (3222). Fit curtain pole mounting cover cap (50442). Fit the shower curtain.



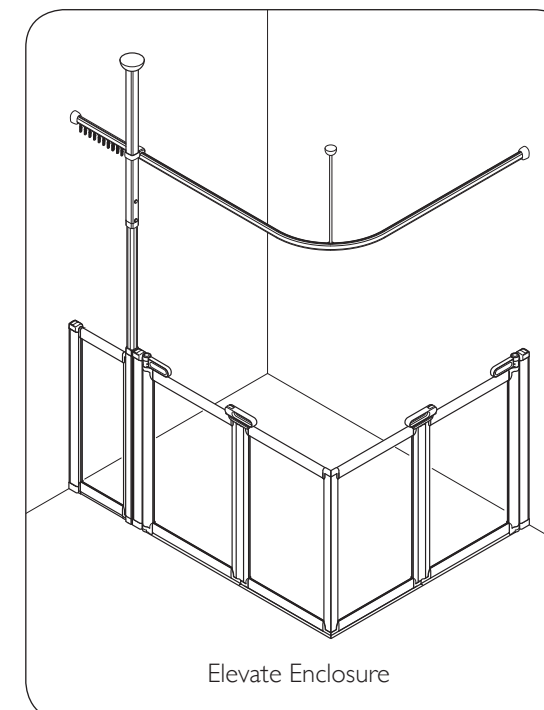
**Fit curtain rail locking tab:** Select the length of seal (40010) and trim to 15mm using a knife or scissors.

Slide a curtain hook into the curtain wall mount cover (at the end you want the shower curtain will be fixed), then push fit the 'locking tab' into the rail as shown above.

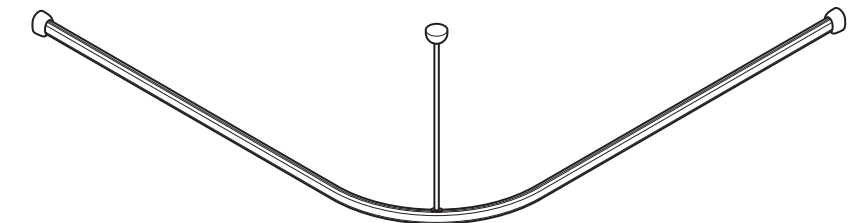
This Guide shows the Installation of the FreeGlide and Elevate Curtain Rails.  
The Corner Elevate Curtain Rail is shown as an example.



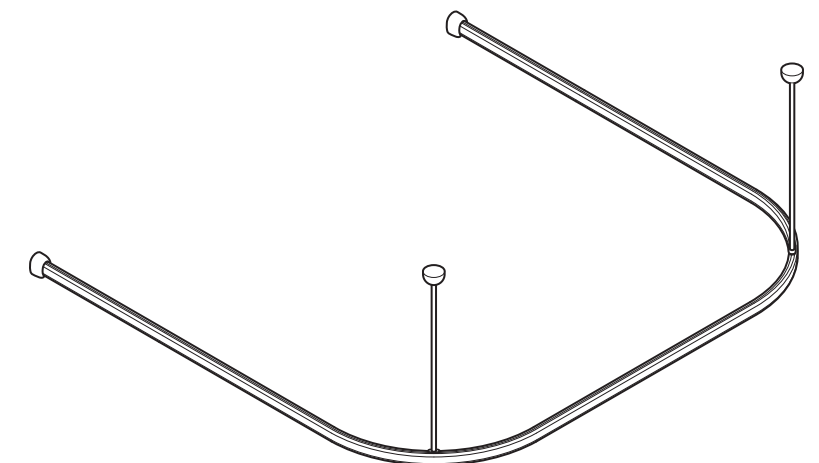
FreeGlide Enclosure



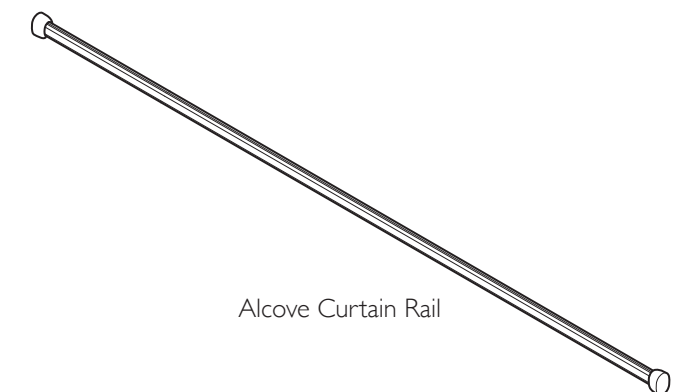
Elevate Enclosure



Corner Curtain Rail



U Shaped Curtain Rail



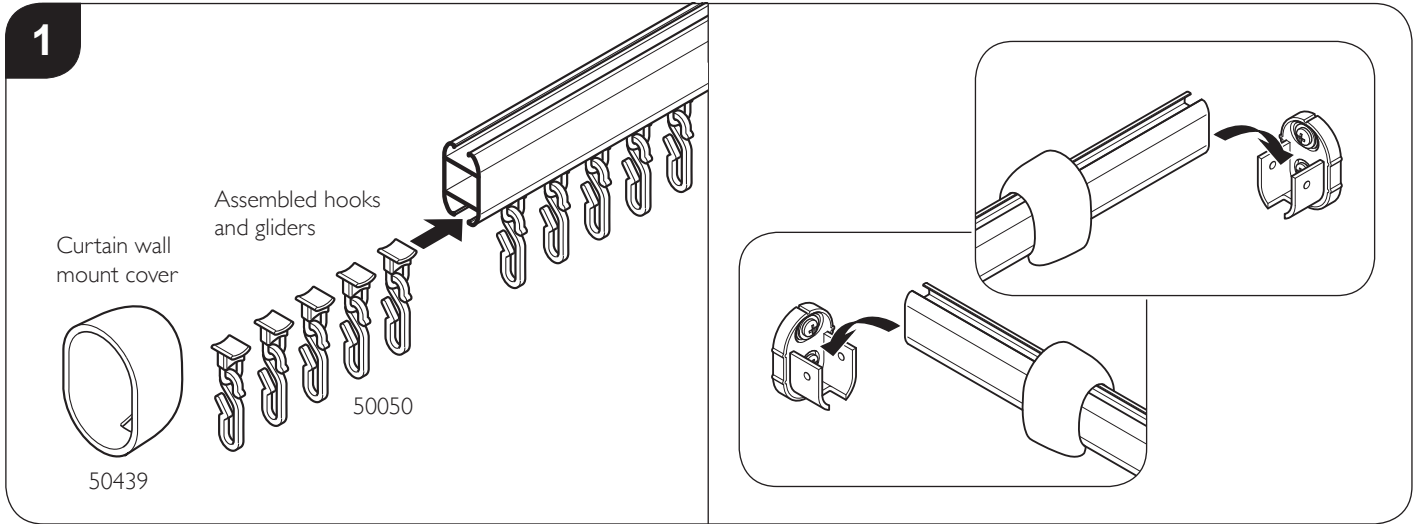
Alcove Curtain Rail

Contents

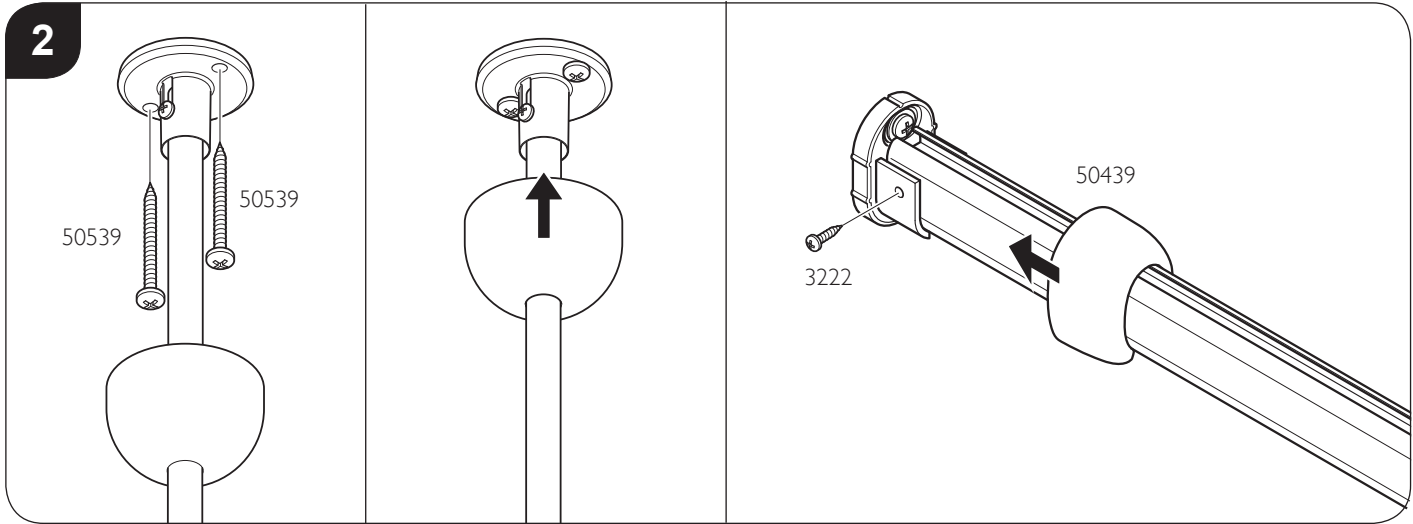
Safety	2
Component Content List	3
<b>Section A</b>	
Installation with Floor to Ceiling Pole/Floor to Rail Pole	4
<b>Section B</b>	
Installation without Floor to Ceiling Pole/Floor to Rail Pole	5
<b>Section C</b>	
Installation of Curtain Rail Support Tube	6
<b>Section D</b>	
Installation of Curtain Rail	7 - 8

Safety

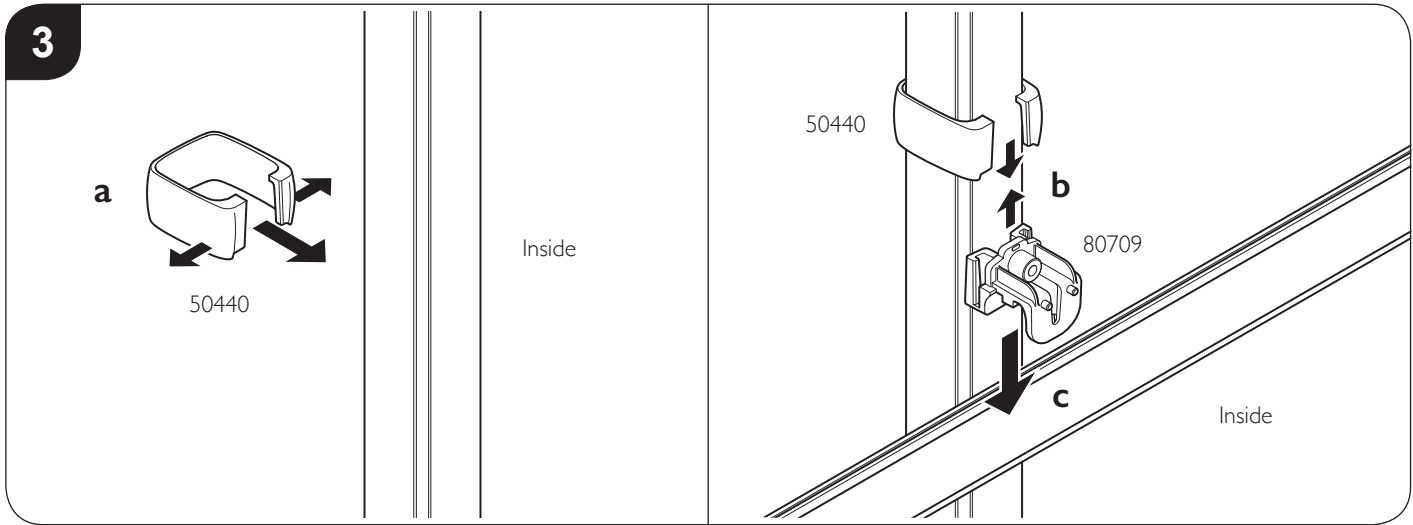
- **Please read these installation instructions carefully before proceeding.**
- This instruction is a general guide for installing the Curtain Rail as a stand-alone item or with the Elevate and FreeGlide enclosures.
- Keep guide for future reference.
- If you are unsure about any part of the installation, please contact our Technical Department on: 01460 256080.
- Incorrect installation will invalidate the guarantee.
- Make sure there are no hidden pipes or cables in the wall or ceiling where you intend to drill.
- Fitting the Curtain Rail may need to be carried out by two people.
- Wear safety goggles, appropriate clothing and footwear.
- Handle with care.



Assemble the hooks and gliders and slide into the bottom recess of the rail. Slide the curtain wall mount covers onto both ends. Position the curtain rail onto the wall brackets.

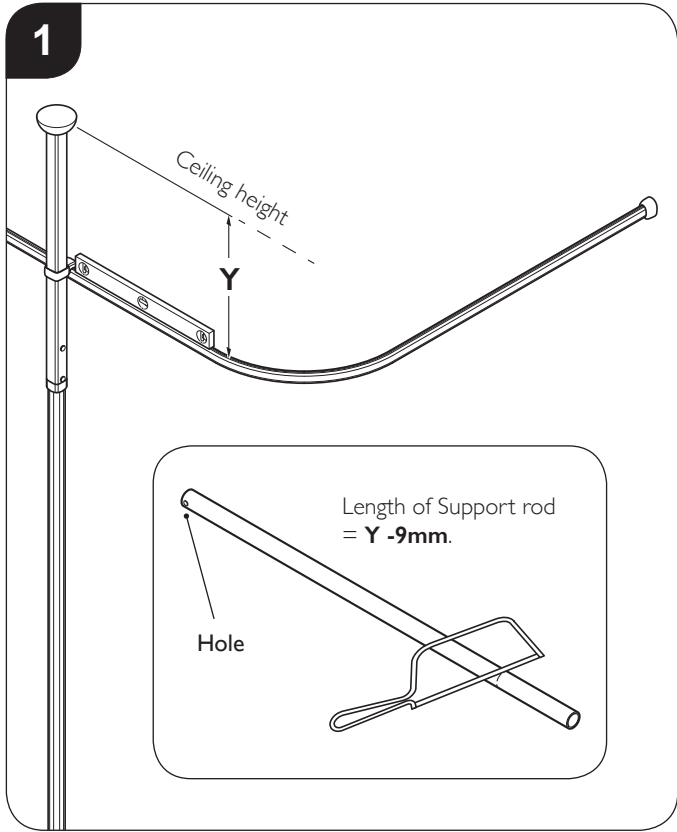


If used, fix the ceiling mount to the ceiling using 2x 50mm screws (50539). Slide the curtain rail ceiling mount cover up onto the ceiling mount. Using a 3mm drill bit, drill through the hole on the wall bracket into the metal curtain rail. Fix using a 10mm screw (3222) and slide the cover over wall bracket. Repeat for other end of the rail.

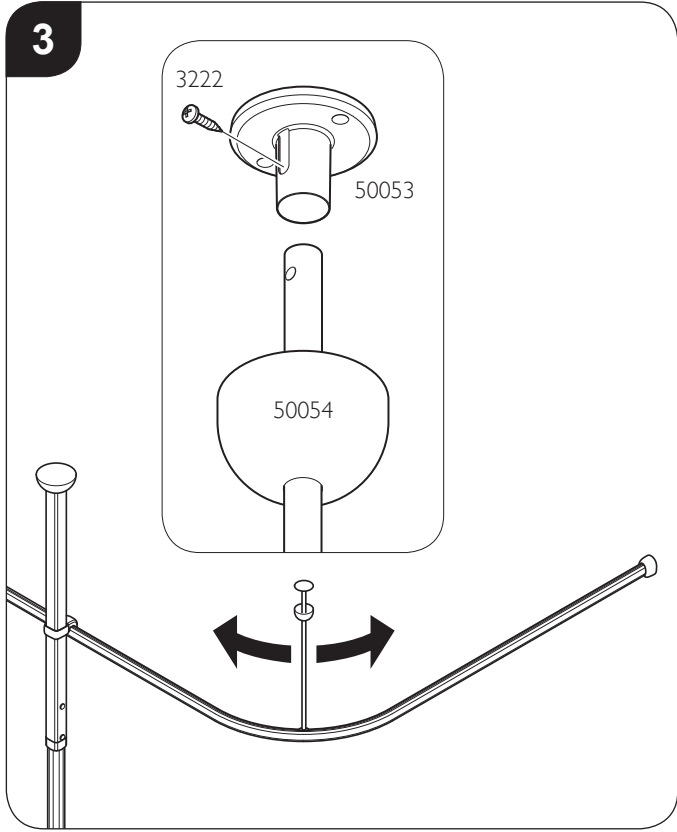


**Elevate Curtain Rail is shown as an example:** **a:** From outside the enclosure, spring the curtain pole mounting ring (50440) around the pole. **b:** Slide the curtain pole mount (80709) up into the curtain pole mounting ring. **c:** Slide the ring and mount assembly down onto the curtain rail.

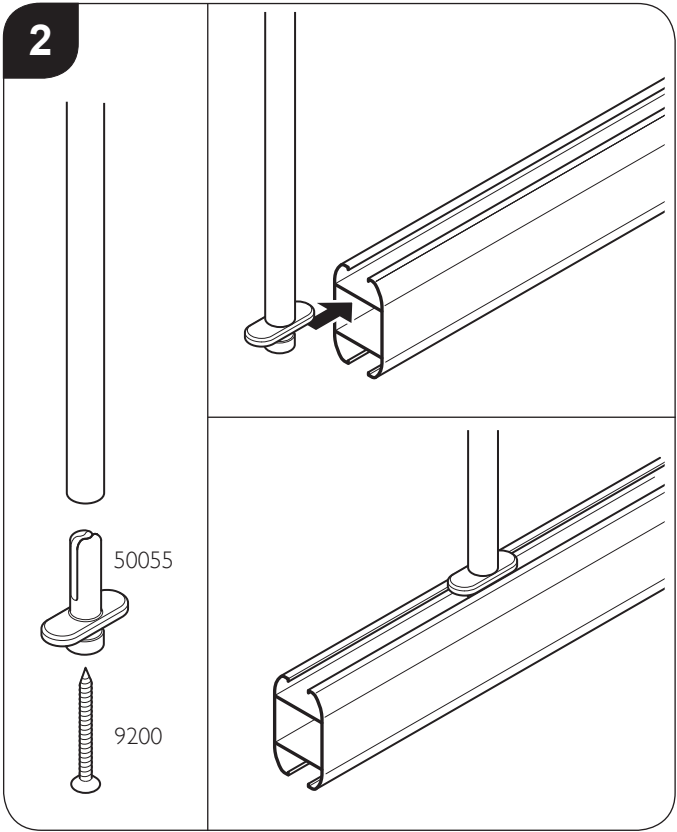
Section C  
Curtain Rail Support Tube Installation



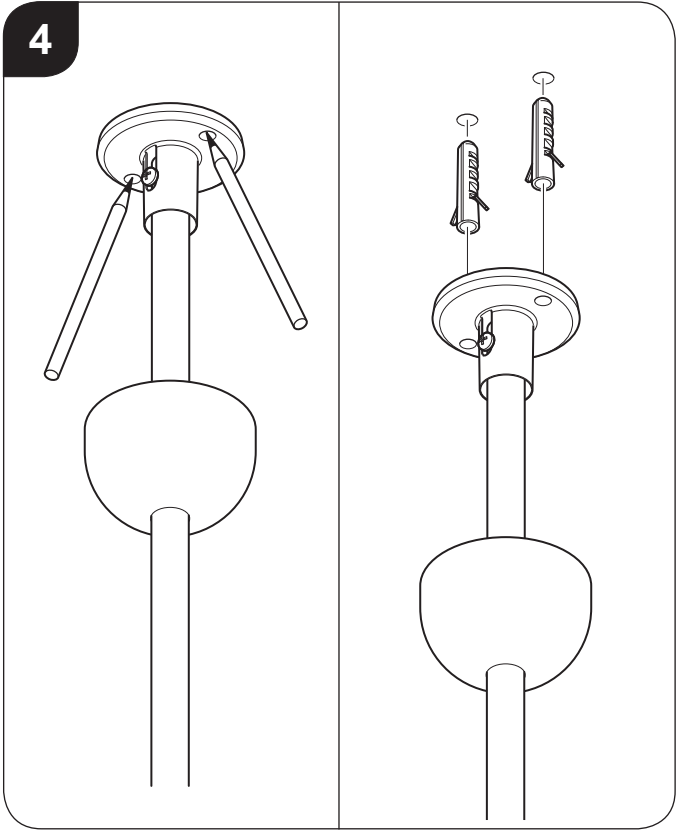
'Dry fit' the curtain rail into the wall brackets. Ensuring the curtain rail is level, measure from the top of the rail to the ceiling. **The length of the support rod = Y - 9mm.** Trim the curtain rail support rod to suit installation. **Important note:** Cut the end that does not have the hole in it.



Position the curtain rail ceiling mount cover (50054) and curtain rail ceiling mount (50053) onto the support rod. Fix the ceiling mount to the support rod using a 10mm screw (3222). Re-position the curtain rail onto the wall brackets. Slide the support rod to the required position on the curtain track.

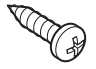

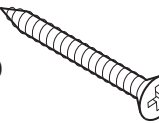

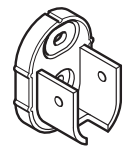

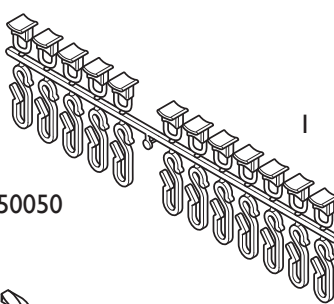
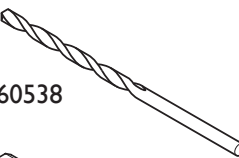
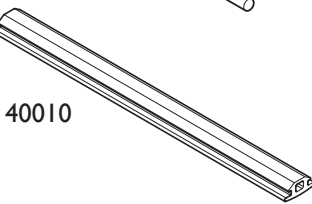


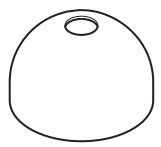
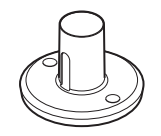
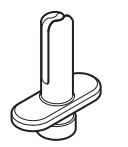
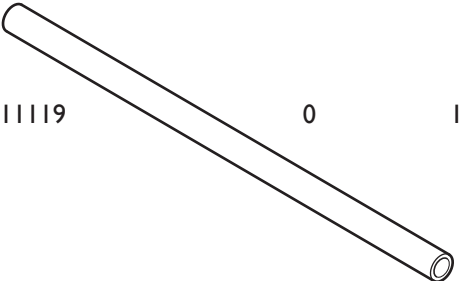
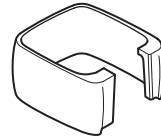
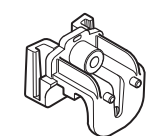


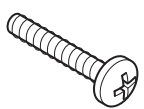
Fix shower rail support (50055) to the end of the support rod (end without the hole) using 32mm counter sunk screw (9200). Slide the assembly into the curtain rail

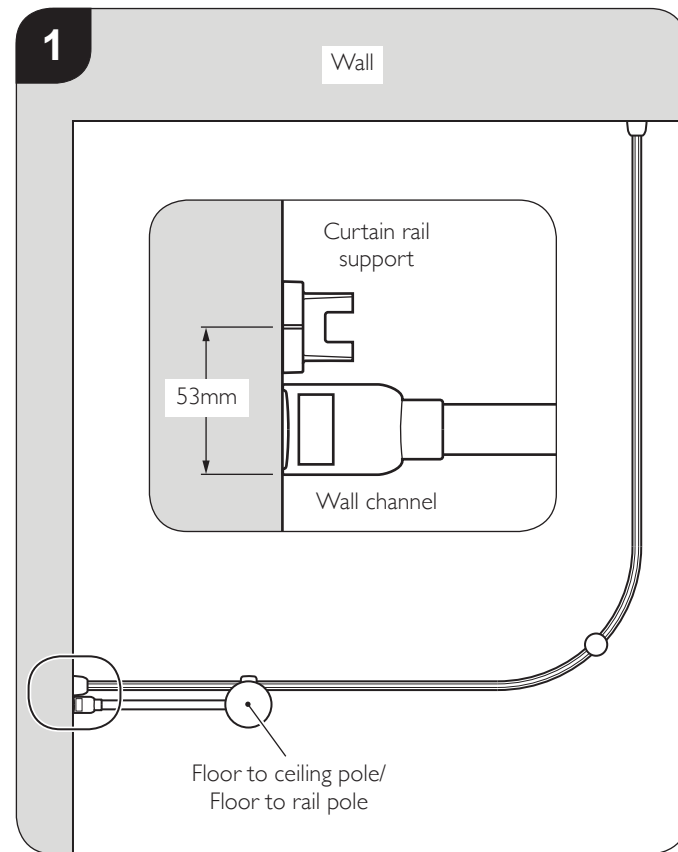


Mark the curtain rail ceiling mount hole positions on ceiling, ensuring the support rod is vertical. Remove the rail assembly. Drill the ceiling using a 6.5mm drill in the marked positions. Insert the wall plugs.

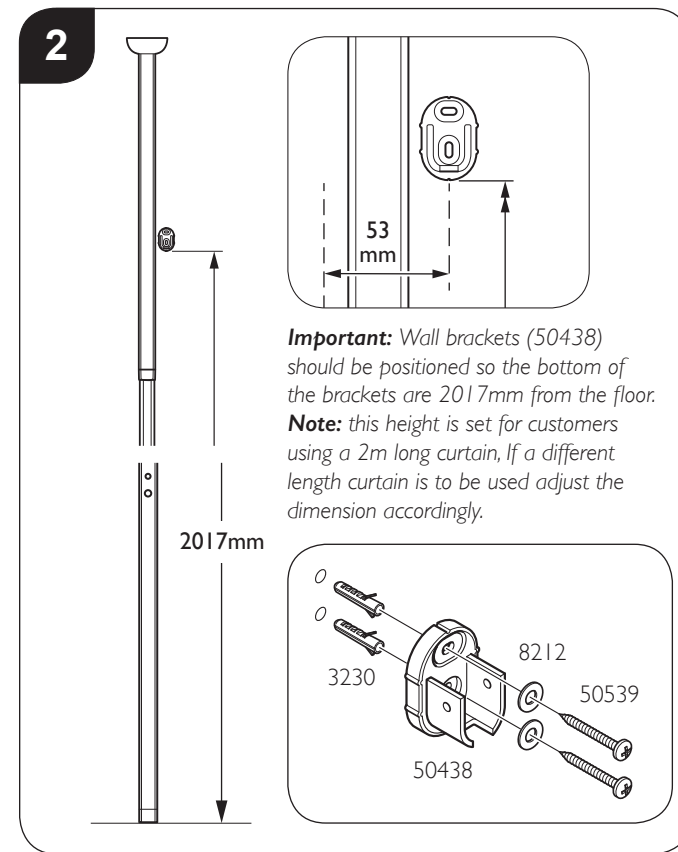
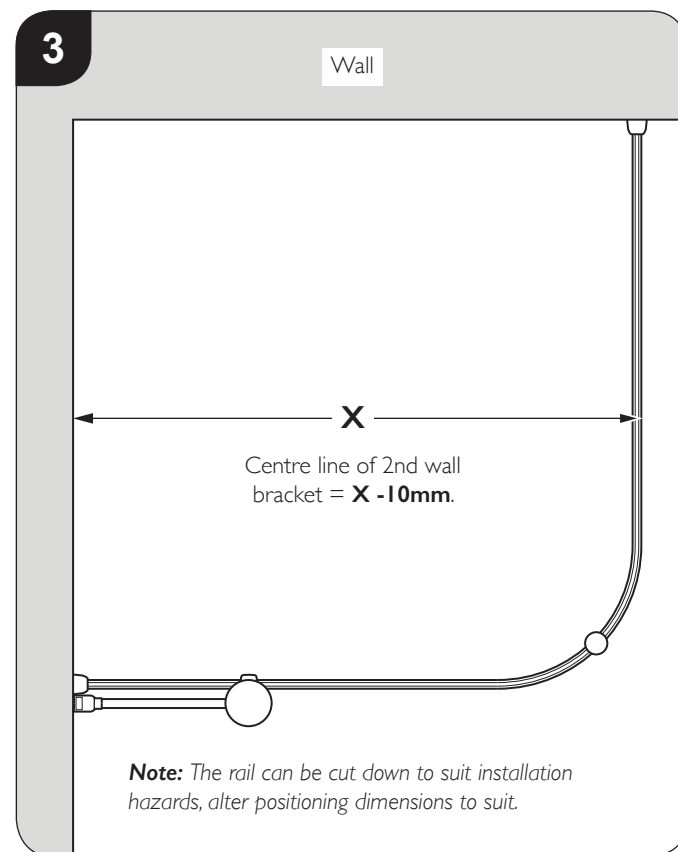
Component Content List

	Alcove	Corner	U Shaped
3222 	2	3	4
3230 	4	6	8
50539 	4	6	8
9200 	0	1	2
8212 	4	4	4
50438 	2	2	2
50439 	2	2	2
50050 	1	2	2
60538 	1	1	1
40010 	1	1	1

	Alcove	Corner	U Shaped
50054 	0	1	2
50053 	0	1	2
50055 	0	1	2
11119 	0	1	2
50440 	<div>Note: These parts are supplied with the fixed panel.</div>		
80709 			
50442 			
3222 			
60066 			



The distance shown from the outside of the wall channel to the centre of the curtain rail support moulding must be 53mm.

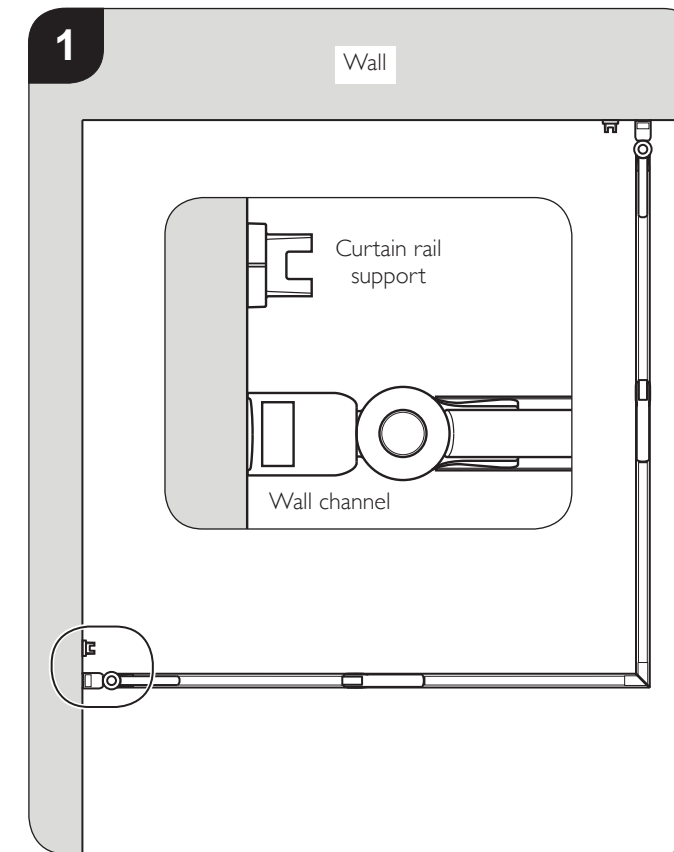


**First wall bracket:** Ensuring wall bracket (50438) is vertical, mark the hole positions. Remove bracket and drill the wall using a 6.5mm drill, insert wall plugs. Fix bracket to the wall using 2x screws (50539) and washers (8212).

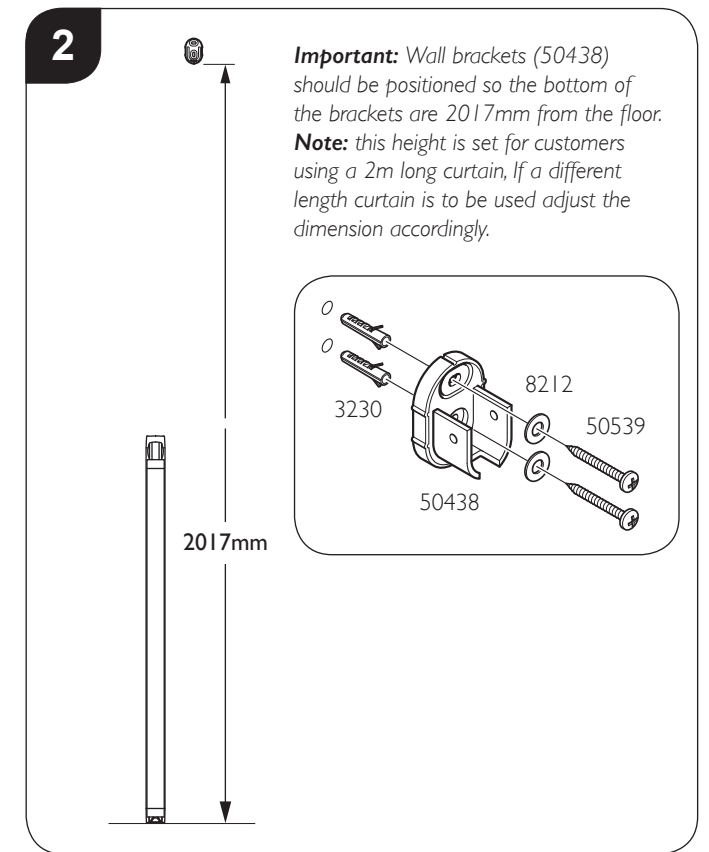
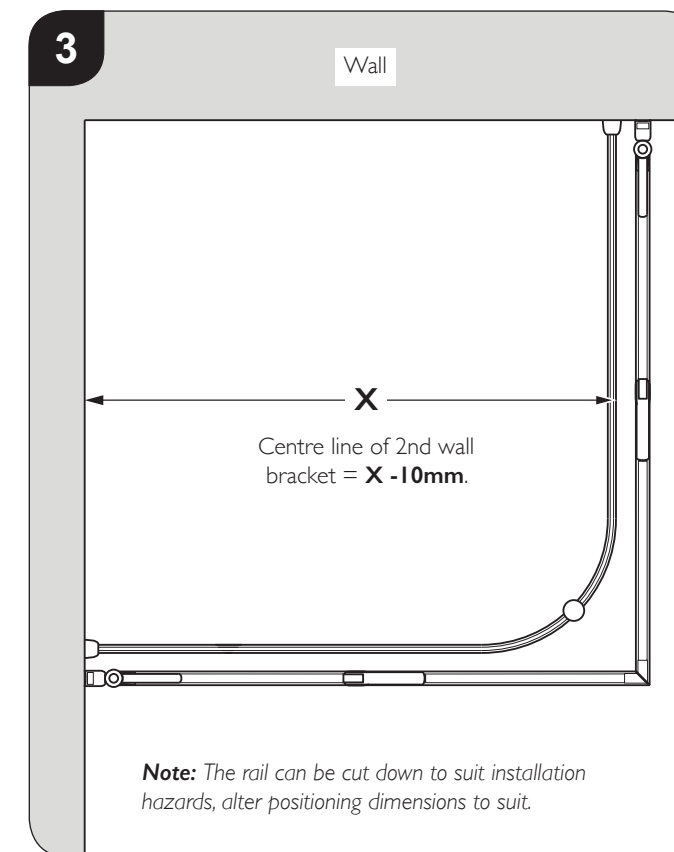
Trial fit the rail in position, ensuring the rail is positioned in the showering area. Trim the rail to suit installation.

**Position of second wall bracket:** Measure the length of the rail and deduct 10mm to get the centre line of the bracket. The vertical position is the same as the position just marked on the first wall bracket (step 2).

Fix the second bracket to the wall as in step 2.



**For configurations without 'Floor to Ceiling Pole/Floor to Rail Pole':** Trial fit the rail in position, ensuring the rail will be positioned inside the showering area. Trim the rail to suit the installation.



**First wall bracket:** Ensuring wall bracket (50438) is vertical, mark the hole positions. Remove bracket and drill the wall using a 6.5mm drill, Insert wall plugs. Fix bracket to the wall using 2x screws (50539) and washers (8212). Repeat with the second wall bracket.

Trial fit the rail in position, ensuring the rail is positioned in the showering area. Trim the rail to suit installation.

**Position of second wall bracket:** Measure the length of the rail and deduct 10mm to get the centre line of the bracket. The vertical position is the same as the position just marked on the first wall bracket (step 2).

Fix the second bracket to the wall as in step 2.