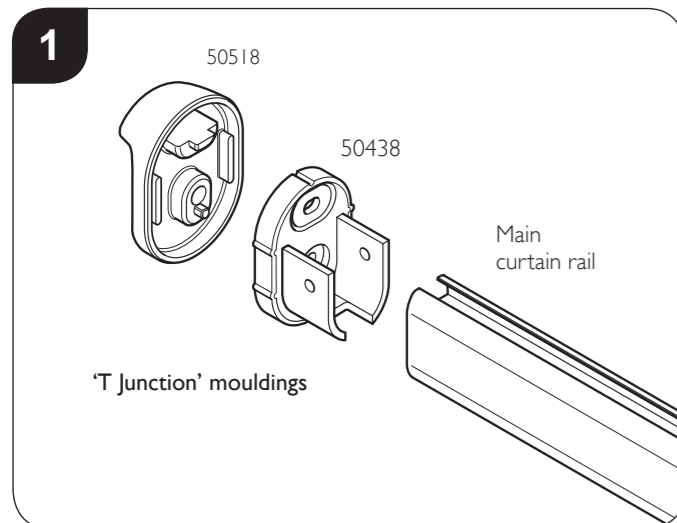
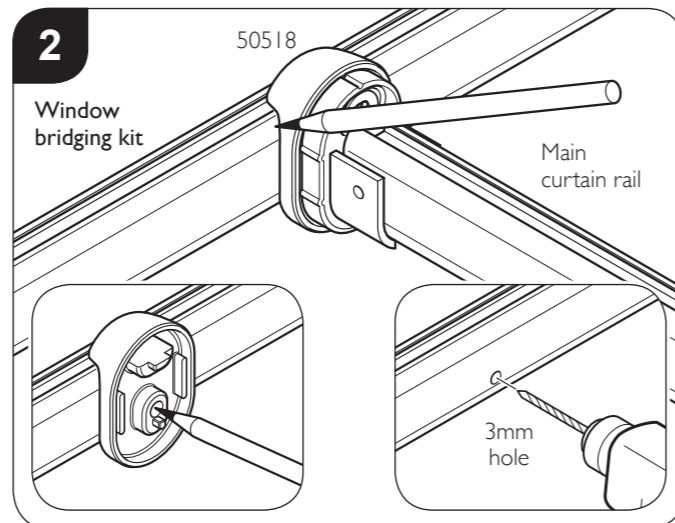


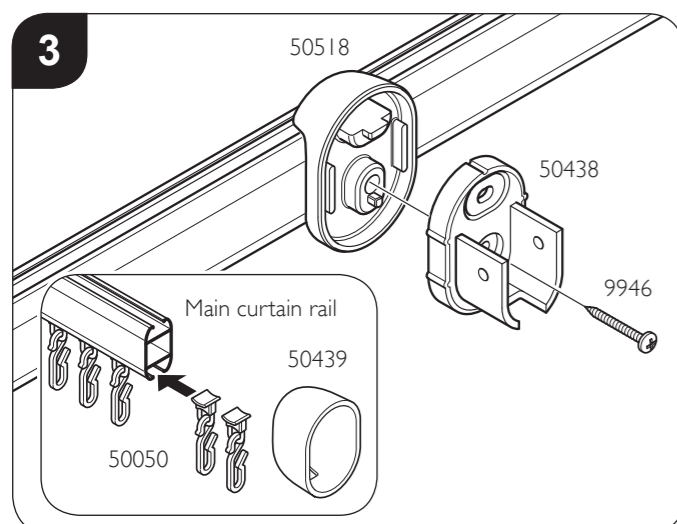
## Installation of the Main Curtain Rail to the Window Bridging Kit



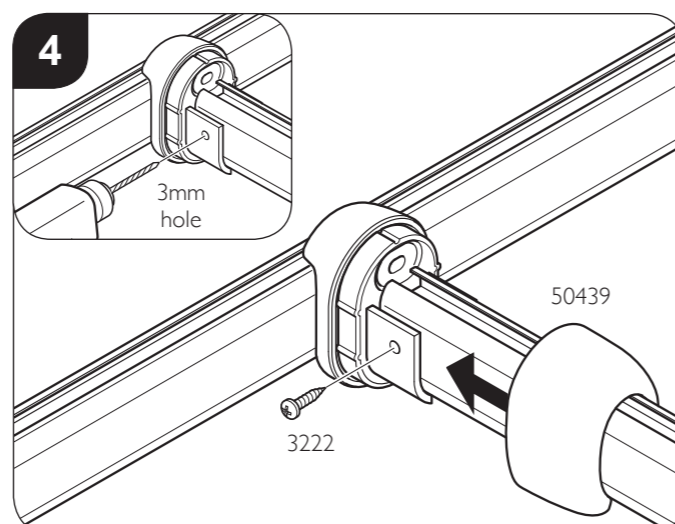
Assemble the 'T Junction' mouldings (50518 & 50438) and fit onto the end of the main curtain rail.



Position assembled 'T Junction' mouldings and rail against the window bridging kit in the required position. Mark around the moulding. Remove 'T Junction' assembly. Use moulding (50518) as a template to mark the fixing hole. Drill a 3mm hole where marked.



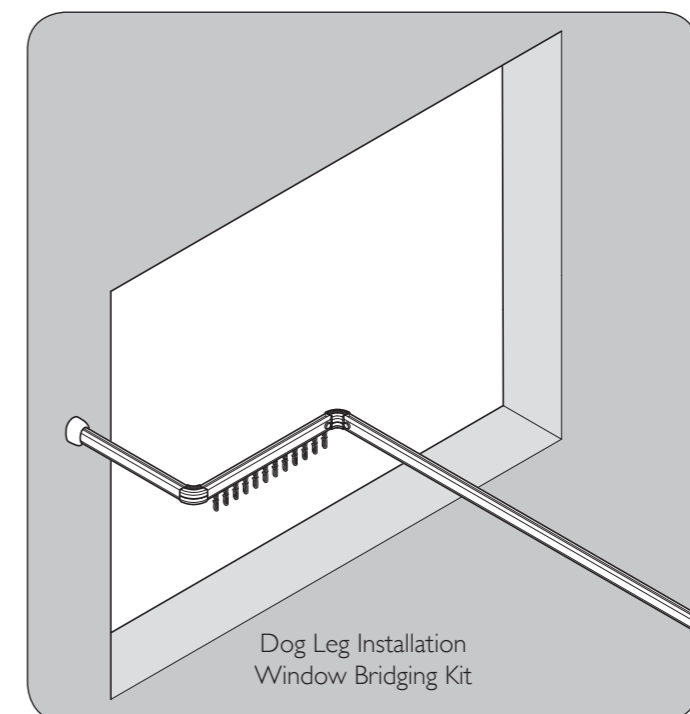
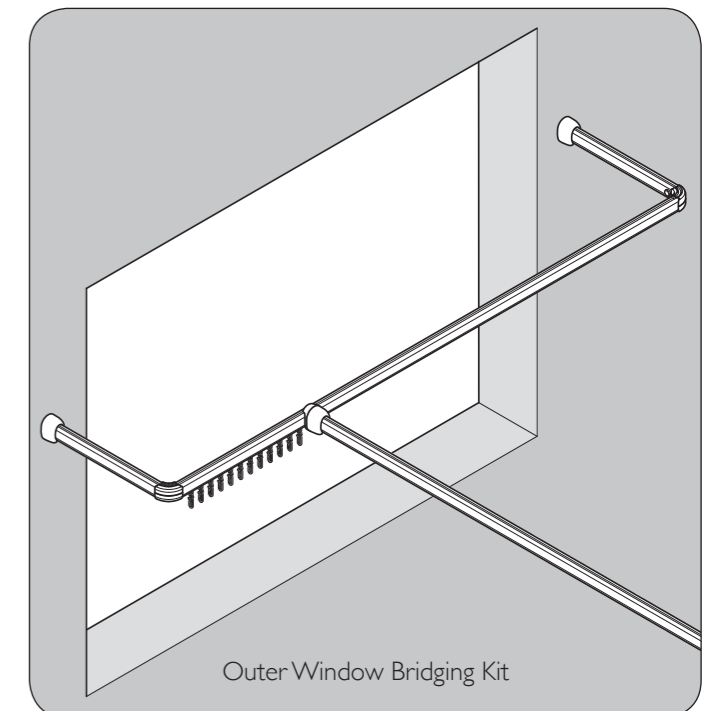
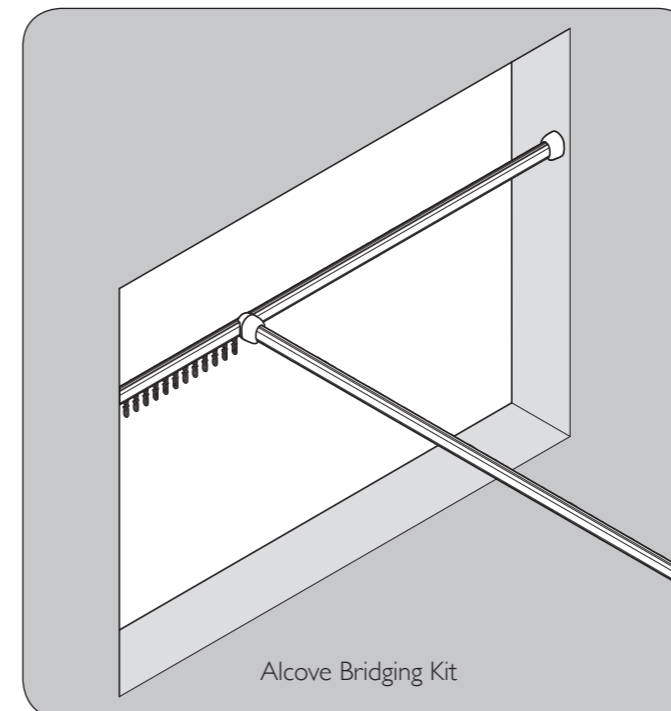
Fix the 'T Junction' mouldings to the window bridging kit using screw (9946). Assemble the hooks and gliders (50050) and slide into the bottom recess of the main curtain rail. Slide the curtain wall mount covers (50439) onto both ends of the main curtain rail.



Position the rail onto the 'T Junction' mouldings, drill a 3mm through the side of the mouldings. Fix using screw (3222) and side cover (50439) over mouldings.

## Curtain Rail Window Bridging Kit Installation Guide

This Guide should be used in conjunction with the 'FreeGlide/Elevate' Curtain Rail Installation Guide.



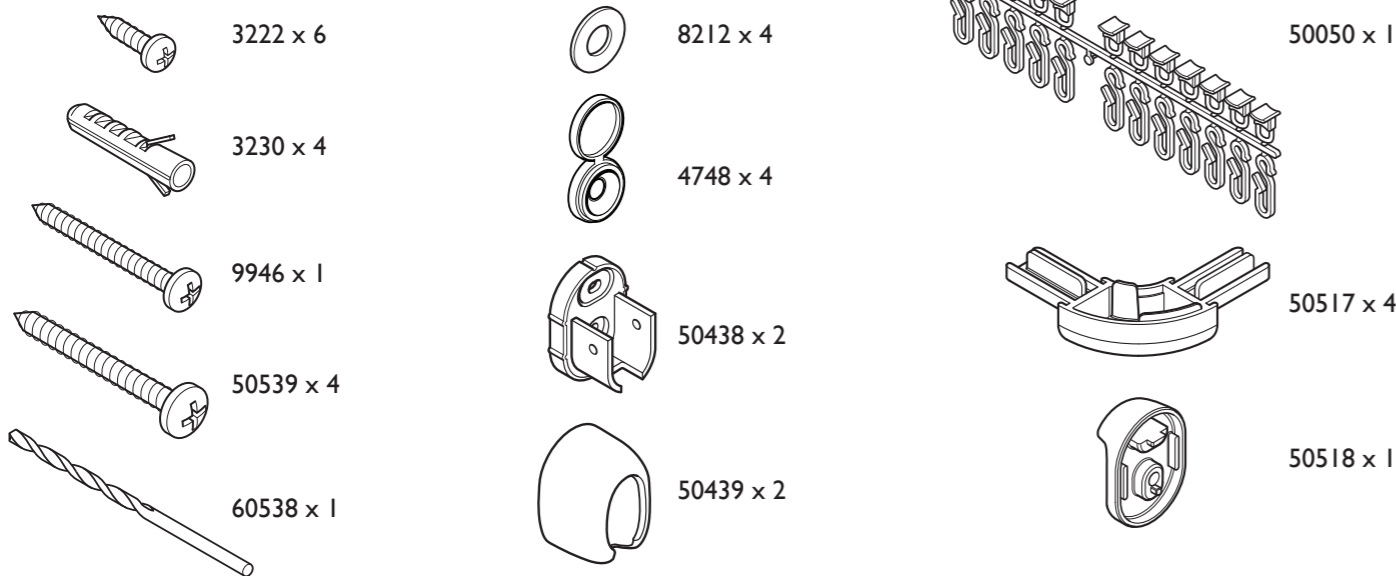
Contents

	Page
Safety	2
Component Content List	2
Installation of the Window Bridging Kit	3
Installation of the Main Curtain Rail to the Window Bridging Kit	4

Safety

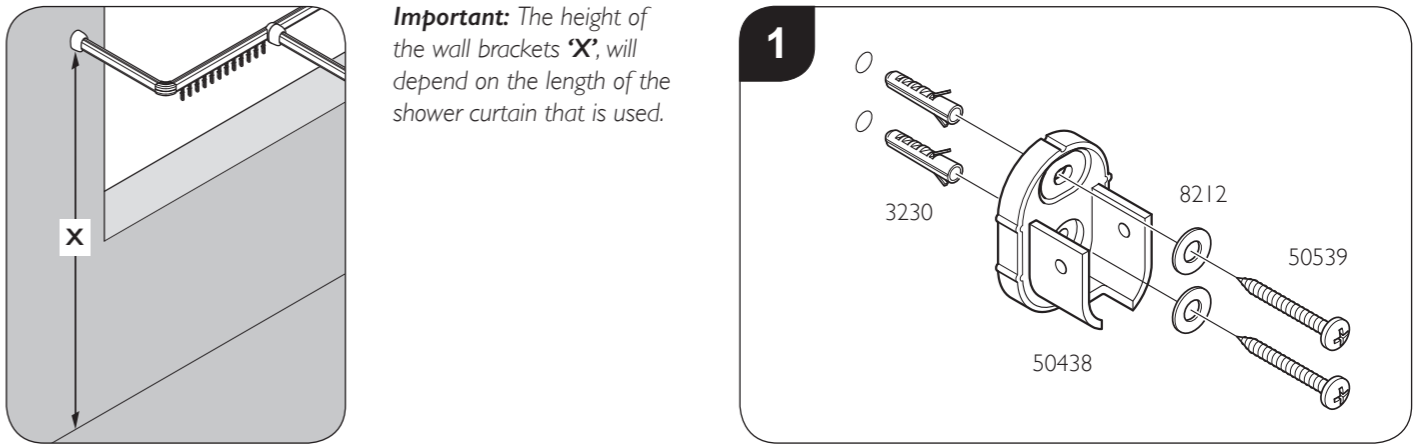
- **Please read these installation instructions carefully before proceeding.**
- This instruction is a general guide for installing the Curtain Rail Window Bridging Kit for the Elevate and FreeGlide enclosures. This Guide should be in conjunction with the 'FreeGlide/Elevate Curtain Rail Installation Guide.
- Keep guide for future reference.
- If you are unsure about any part of the installation, please contact our Technical Department on: 01460 256080.
- Incorrect installation will invalidate the guarantee.
- Make sure there are no hidden pipes or cables in the walls where you intend to drill.
- Fitting the Curtain Rail may need to be carried out by two people.
- Wear safety goggles, appropriate clothing and footwear.
- Handle with care.

Component Content List

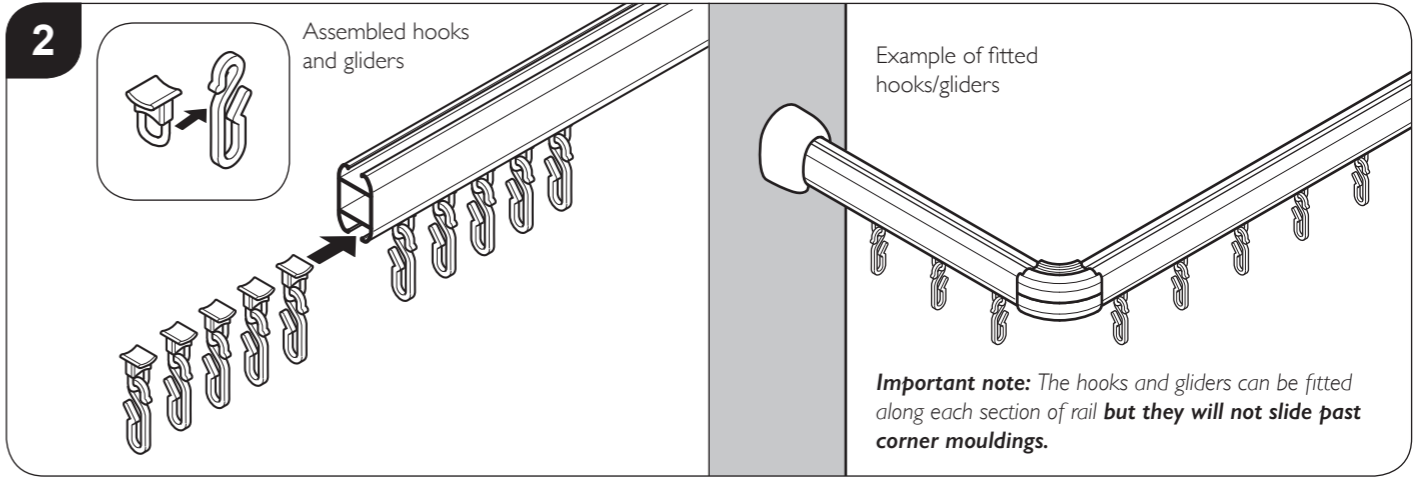


**Please note: By now all planning, height of curtain drop etc. must be completed.**

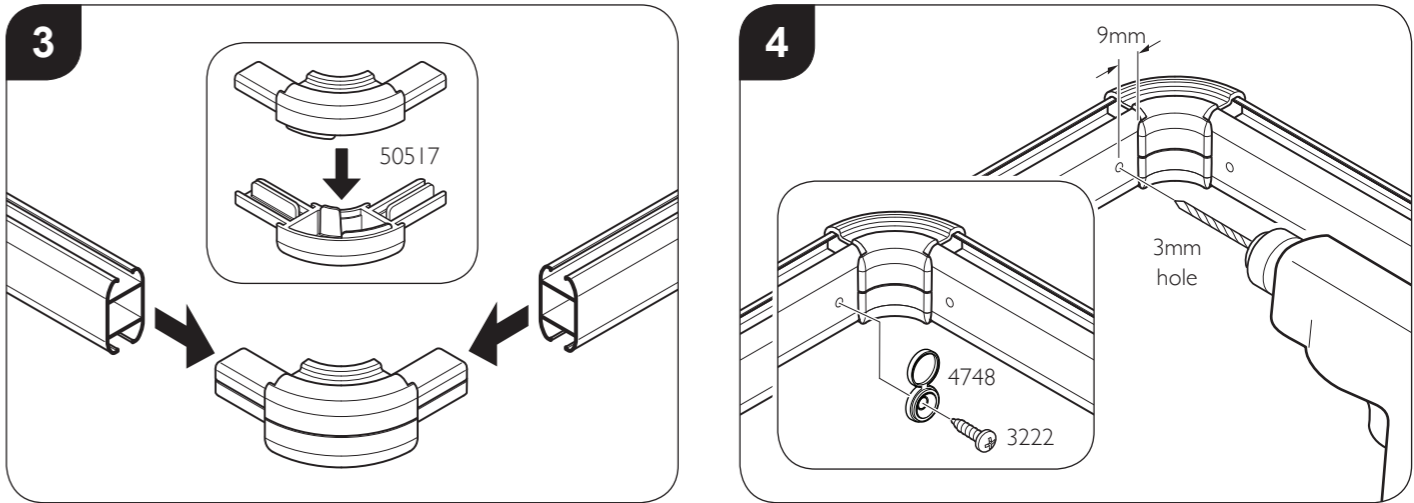
**Important:** This Guide should be used in conjunction with the 'FreeGlide/Elevate' Curtain Rail Installation Guide.



Ensuring the wall bracket (50438) is vertical, mark the hole positions and drill the wall using a 6.5mm masonry drill. Insert the wall plugs and fix the first bracket to the wall using screws (50539) and washers (8212). Repeat with the other wall bracket as required, ensuring the rail is level.  
**Note:** Carefully cut the Rails down to suit the installation required.



Assemble the hooks and gliders and slide into the bottom recess of the rail. **Note:** Insert the hooks and gliders to suit rail installation.



Assemble the 2x Corner mouldings (50517).  
Fully slide the rails onto the assembled Corner mouldings.

From inside the rail, drill 2x 3mm holes 9mm from the edges of the corner moulding as shown. Fix the corner moulding to the rails using 2x screws (3222) and Cover caps (4748). Repeat with any other corners as required.