



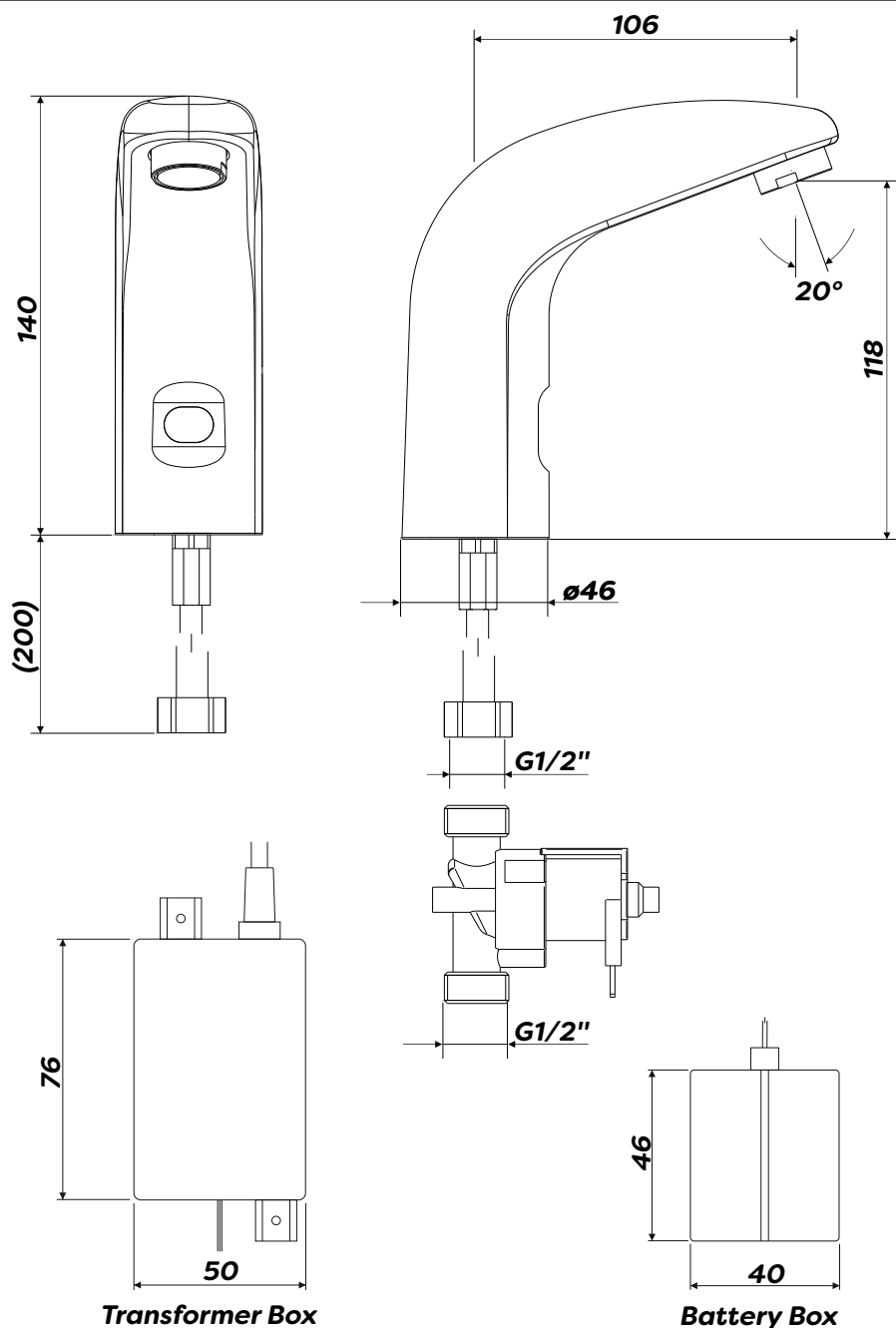
## Product

**IR120CP.1 - Infrared Contemporary Basin Mounted Tap (Battery Operated)**

**IR121CP.1 - Infrared Contemporary Basin Mounted Tap (Mains Operated)**

## Technical Specification

<b>Max Inlet Pressure (static):</b>	<b>8 Bar</b>
<b>Min Inlet Pressure (dynamic):</b>	<b>1 Bar</b>
<b>Min Inlet Temperature:</b>	<b>70°C</b>
<b>Max Basin Thickness:</b>	<b>26mm</b>
<b>Automatic Flush Cycle:</b>	<b>Every 24 Hours</b>
<b>Inlet Connections:</b>	<b>Copper Tail G1/2"x10mm</b>



## Additional Information

**Battery life approximately 4 years with 150 operations per day**

**Battery and mains operated versions available**

**Auto self closing tap, preventing water wastage**

**24 hour anti-stagnation flushing cycle**

**Infra red contactless operation**

**Copper inlet connection**

**Pre-set sensor range**

**Suitable for use with the Intamix range of thermostatic mixing valves**



Scan For Spares Sheet

Scan For Installation & Maintenance Instructions

**Intatec, Airfield Industrial Estate, Hixon, Stafford, ST18 0PF**

**T. 01889 272180 F. 01889 272181 E. [sales@intatec.co.uk](mailto:sales@intatec.co.uk)**

**[www.intatec.co.uk](http://www.intatec.co.uk)**

04/22  
E&OE