



Product Range

Description

**Wall mounted knee operated
multi directional valve (exposed)**

Code

LO810CP

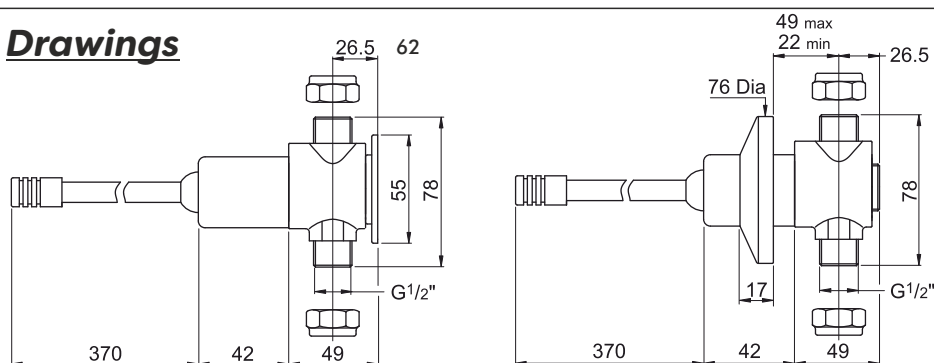
**Wall mounted knee operated
multi directional valve (concealed)**

LO820CP

Technical Specification

Max Inlet Pressure:	5 bar
Min Inlet Pressure:	0.1 bar
Max Inlet Temperature:	65°C
Flow Time:	15 +/- 3 seconds at 3 bar
Inlet Connections:	15mm
Outlet Connections:	15mm

Drawings



Additional Information

Water Saving

Hygenic

Robust construction

Durable

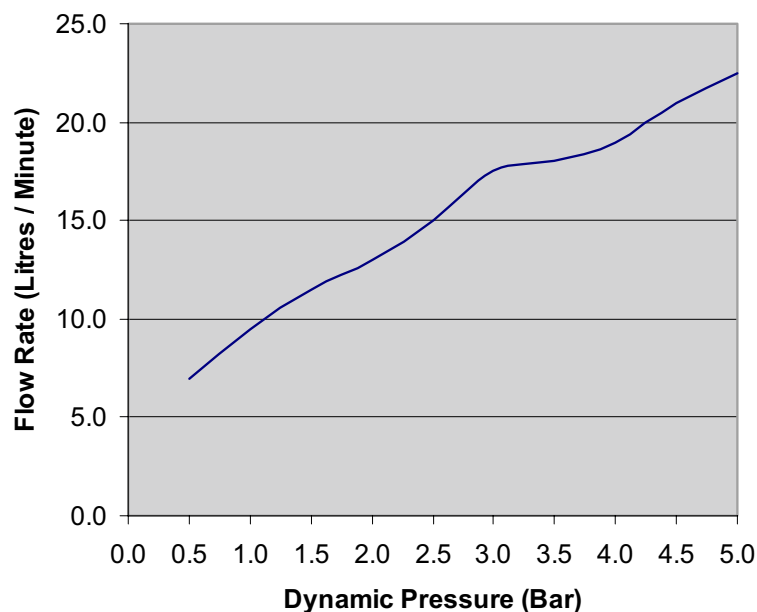
Easy to install

Vandal resistant

Ideal for wide range of applications

Chrome and white finish

Flow Rate Graph



Scan for Further Information

Intatec, Airfield Industrial Estate, Hixon, Stafford, ST18 0PF

T. 01889 272180 F. 01889 272181 E. sales@intatec.co.uk

www.intatec.co.uk

**05/23
E&OE**