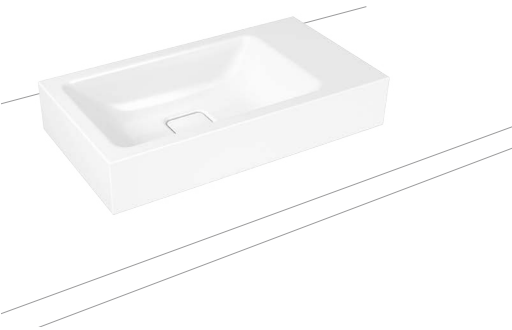


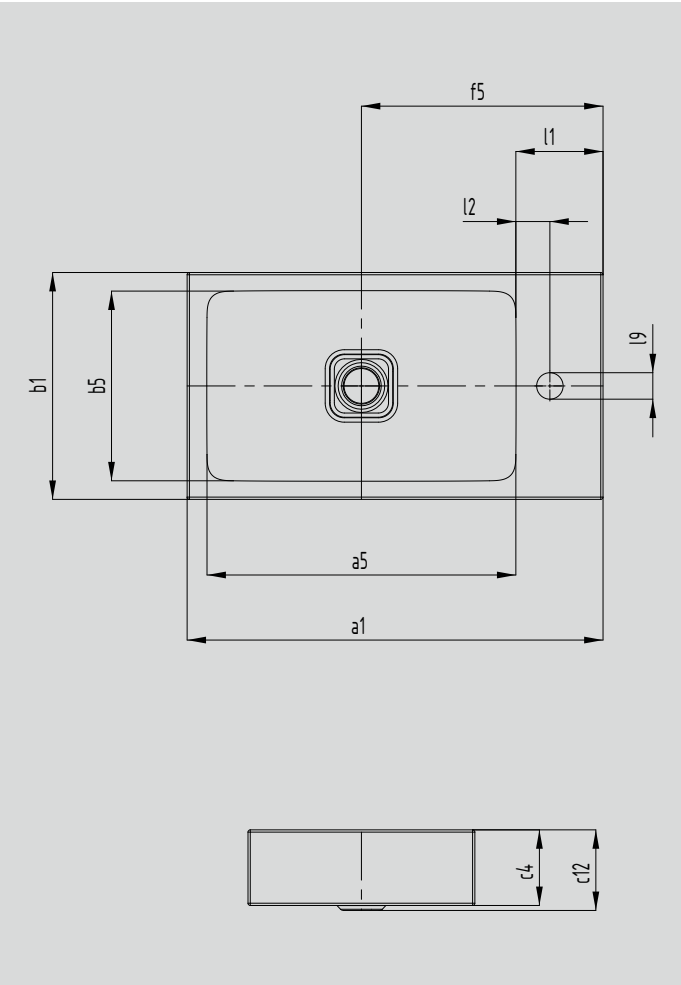
CONO COUNTERTOP HANDBASIN

(TAP HOLE OPTIONALLY LEFT OR RIGHT)

- washbasin with premium character exudes elegance and harmony
- optimally integrated enamelled waste accentuates the underlying geometry of the washbasin
- unusually generous rim provides space for fittings or individual accessories
- perfectly complements the CONO range



Similar illustrations



Model No.		3074
External length	a1	550 mm
Internal length	a5	408.5 mm
External width	b1	300 mm
Internal width	b5	250.5 mm
Height of rim	c4	100 mm
Distance basin surface to bottom edge of waste hole	c12	102 mm
Distance outer edge to centre of waste hole	f5	319.5 mm
Depth of tap deck	l1	115.5 mm
Distance tap holes to edge	l2	45 mm
Diameter of centre tap hole	i9	35 mm
Weight of the enamelled washbasin in kg		8.16