

Product finish	Chrome
Product category	Single Lever
First supplied date	31/07/2006

EAN 13 barcode	5015834036090
Location of DOM trace code:	DOM code on multiple box outer



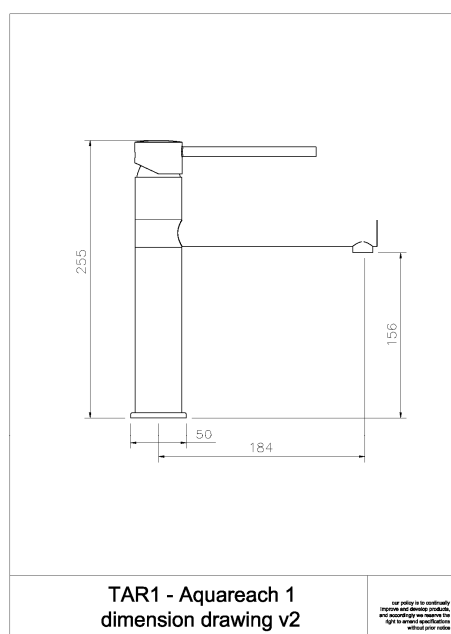
Nb. Model shown may not be displayed in the finish as described.

Product features:

- Metal construction throughout
- Single lever control for effortless single handed control
- Antisplash spout supplied as standard
- Supplied complete with flexible tail pipes for fast simple fitting
- Solid and functional European architect design styling

Additional information / Parts included:

Product dimensions & valve type:



- Overall Height / projection: 255 mm
- Exit reach: 184 mm
- Exit height: 156 mm
- Centre distance(s): N/A mm

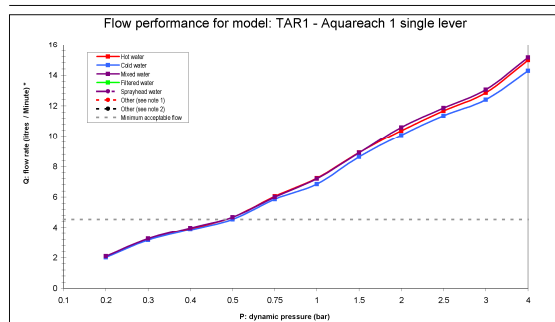
- Base diameter(s): 50 mm
- Recommended fixing hole diameter: Ø35 mm
- Max. surface fixing depth: 45 mm

- Control valve type: 35mm Ø Ceramic single lever
- Valve detail: N/A

- DDA compliant design? Yes

Product flow characteristics:

	0.1	0.2	0.3	0.4	0.5	0.75	1	1.5	2	2.5	3	4
Hot water	2.00	3.25	3.80	4.05	4.30	5.05	7.25	8.80	10.35	11.85	13.35	14.85
Cold water	2.00	3.15	3.65	3.95	4.25	5.00	7.20	8.75	10.30	11.80	13.30	14.80
Mixed water	2.10	3.25	3.80	4.05	4.30	5.05	7.25	8.80	10.35	11.85	13.35	14.85
Filtrated water												
Sprayed water												
Other (see note 1)												
Other (see note 2)												



note 1:
note 2:

- Min / Max water pressure: 0.50 / 5.50 bar (MP)

- Recommended / Maximum water temperature: 46°C / 70°C

- Part G:
Unrestricted mixed flow rate, 3 bar (litres / min): 13.05

*Flow results are produced under test conditions and represent the non flow regulated dynamic output of the product model.

LP (lower pressure) less than 0.5 bar
MP (medium pressure) 0.5 bar to 1 bar
HP1 (high pressure) 1 bar to 2 bar
HP2 (very high pressure) 2 bar or more

Minimum flow rate (1 GPM) based on mixed flow.

Flow regulator included? N/A

Inlet pipes:

- **Tail pipe inlet / outlet size:** M10 / 1/2" BSPP Male / 15mm ID
- **Inlet pipe type / length:** Flexible stainless braided hose / 360 mm

Spout detail & Flow characteristics:

- | | |
|--|--|
| <ul style="list-style-type: none">• Spout diameter: 24 mm• Spout aerator size: M18x1 M• Spout rotation range: 360°• Aerator type: Honeycomb Aerator• Aerator colouring: Grey / white• Spout connection: N/A | <ul style="list-style-type: none">• Product flow characteristics: Single flow• Non return valve (NRV) supplied: X 2 Integral to hot & cold flexis• NRV required to be installed for byelaw compliance: Yes, on both hot & cold supplies |
|--|--|

Product markings and indicators:

- **Branding position:** None
- **Hot / Cold indication:** H & C Lasered In Sans Serif Font On Handle Front

Packaged properties:

Box length: 250 mm	Box depth: 55 mm
Box width: 215 mm	Units per outer: 5
Box has 'pressure warning sticker' ?	No
Packaging branding:	White unprinted

Tap only weight: 0.99 kg

Boxed weight: 1.66 kg

Total card weight: 148 grams

Total plastics weight: 10 grams

- **Approval certificate number:** WRAS 0910330
- **Expiry date:**

Warranty Summary (Full details available on request):

- Materials and workmanship defects warranted for 5 years
- Valves and working parts warranted for 2 years
- Surface warranty defects warranted for 1 year
- O-rings, hoses & gaskets warranted for 1 years

Care instructions:

- Clean the mixers and showers regularly as required, using soap, do not use any other cleaners.
- Regular cleaning will prevent the build up of lime scale and dirt
- After cleaning rinse thoroughly with clean water to remove any cleaner residue
- Residues of sink & worktop cleaners can also cause damage, so rinse with clean water after using, avoid contact with any abrasives