

Product finish	Chrome
Product category	Monobloc
First supplied date	01/03/2004

EAN 13 barcode	5015834018355
Location of DOM trace code:	ABAD2(mm/yy) on rear of body



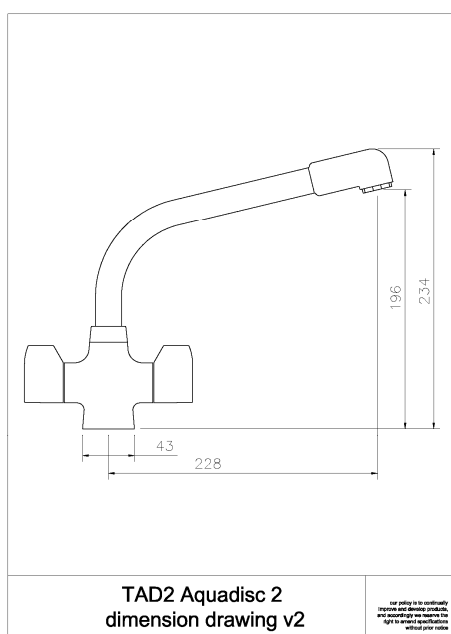
Nb. Model shown may not be displayed in the finish as described.

Product features:

- Metal construction throughout (plastic hot / cold markers)
- Custom designed for lower to mid pressures
- Quarter turn handle action for precise flow control
- Durable quality chromium plate finish
- Supplied with copper tail pipes for maximum stability and flow

Additional information / Parts included:

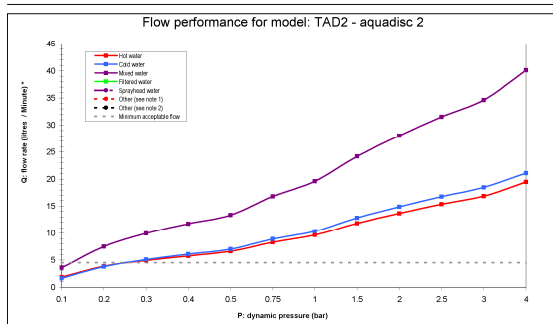
Product dimensions & valve type:



- **Overall Height / projection:** 234 mm
- **Exit reach:** 228 mm
- **Exit height:** 196 mm
- **Centre distance(s):** N/A mm
- **Base diameter(s):** 43 mm
- **Recommended fixing hole diameter:** Ø35 mm
- **Max. surface fixing depth:** 35 mm
- **Control valve type:** 1/2" Quarter turn ceramic disc
- **Valve detail:** 8-20
- **DDA compliant design?** Yes

Product flow characteristics:

	0.1	0.2	0.3	0.4	0.5	0.75	1	1.5	2	2.5	3	4
Hot water	1.20	1.58	4.95	9.77	9.05	9.28	9.95	11.95	13.67	15.28	16.85	18.45
Cold water	1.69	3.81	5.10	6.13	7.01	8.89	10.35	12.84	14.89	16.73	18.45	21.08
Mixed water	3.80	7.48	9.95	11.15	13.35	15.91	19.19	24.22	28.53	31.52	34.90	40.10
Filtrated water												
Sprayhead water												
Other (see note 1)												
Other (see note 2)												



- **Min / Max water pressure:** 0.20 / 5.50 bar (LP)
- **Recommended / Maximum water temperature:** 46°C / 70°C
- **Part G:**
Unrestricted mixed flow rate, 3 bar (litres / min): 34.60

*Flow results are produced under test conditions and represent the non flow regulated dynamic output of the product model.

LP (lower pressure) less than 0.5 bar
MP (medium pressure) 0.5 bar to 1 bar
HP1 (high pressure) 1 bar to 2 bar
HP2 (very high pressure) 2 bar or more

Minimum flow rate (1 GPM) based on mixed flow.

Flow regulator included? N/A

Inlet pipes:

- **Tail pipe inlet / outlet size:** M12x1 / 15mm outside diameter
- **Inlet pipe type / length:** Copper rigid tube / 245 mm

Spout detail & Flow characteristics:

- | | |
|---|--|
| <ul style="list-style-type: none"> • Spout diameter: 22 mm • Spout aerator size: M24x1 M • Spout rotation range: 360° • Aerator type: Flow straightener • Aerator colouring: Black plastic • Spout connection: Spout locking collar | <ul style="list-style-type: none"> • Product flow characteristics: Dual Flow • Non return valve (NRV) supplied: No, none required • NRV required to be installed for byelaw compliance: None |
|---|--|

Product markings and indicators:

- **Branding position:** None
- **Hot / Cold indication:** Chrome Indcies With Red & Blue Dot

Packaged properties:

Box length: 380 mm	Box depth: 50 mm
Box width: 155 mm	Units per outer: 10
Box has 'pressure warning sticker' ?	No
Packaging branding:	Brown unprinted box

Tap only weight: 1.05 kg

Boxed weight: 1.38 kg

Total card weight: 111 grams

Total plastics weight: 16 grams

- **Approval certificate number:** WRAS 1107318
- **Expiry date:**

Warranty Summary (Full details available on request):

- Materials and workmanship defects warranted for 5 years
- Valves and working parts warranted for 2 years
- Surface warranty defects warranted for 1 year
- O-rings, hoses & gaskets warranted for 1 years

Care instructions:

- Clean the mixers and showers regularly as required, using soap, do not use any other cleaners.
- Regular cleaning will prevent the build up of lime scale and dirt
- After cleaning rinse thoroughly with clean water to remove any cleaner residue
- Residues of sink & worktop cleaners can also cause damage, so rinse with clean water after using, avoid contact with any abrasives