

# ATLANTA 18/10 STAINLESS STEEL SINK

ATL9502/



**Size: 950 x 508 mm**

The Atlanta sink collection offers a contemporary design, which features raised flutes across the drainer. Contemporary bowls complement the overall look of the sink.

- Fits a 600mm cabinet
- Reversible installation
- Brushed finish
- Manufactured from 18/10 stainless steel
- 10 year warranty

Material	18/10 Stainless Steel
Material Gauge	0.7
Material Finish Bowl	Brushed
Material Finish Drainer	Brushed
Drainer Position	Reversible
Overall Length (mm)	950
Overall Width (mm)	508
Main Bowl Length (mm)	360
Main Bowl Width (mm)	424
Main Bowl Depth (mm)	160
Second Bowl Length (mm)	170
Second Bowl Width (mm)	300
Second Bowl Depth (mm)	130
Tap hole Size (mm)	1 x 35
Waste Size (mm)	2 x 90
Waste Kit	WAST04/ (sold separately)
Min. Base Unit (mm)	600
Cutout Size Length (mm)	
Cutout Size Width (mm)	
Warranty Sinks (years)	25
Product Code	ATL9502/
Barcode	

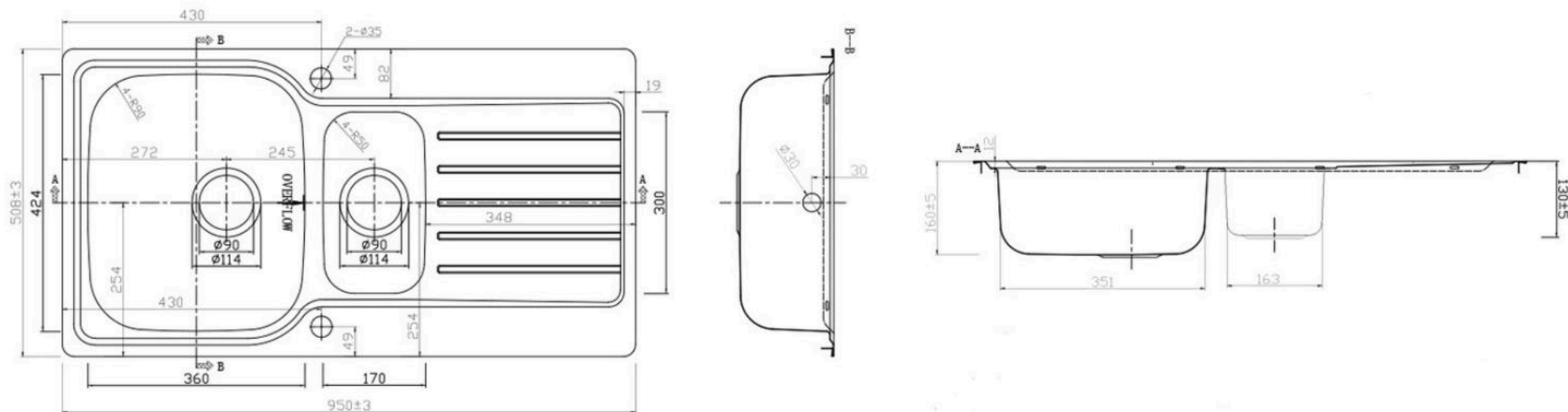
Date of download: July 18, 2025

AGA Rangemaster continuously seeks improvements in specification, design and production of products and thus, alterations take place periodically. Whilst every effort is made to produce up-to date resources, the information included here is intended as a guide. Always refer to the product's installation instructions when fitting, installation work should be completed a professional tradesman.

# ATLANTA 18/10 STAINLESS STEEL SINK

ATL9502/

## Technical Drawing

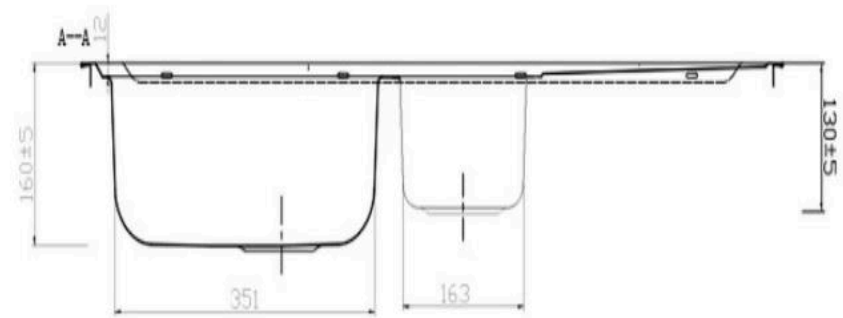


Date of download: July 18, 2025

AGA Rangemaster continuously seeks improvements in specification, design and production of products and thus, alterations take place periodically. Whilst every effort is made to produce up-to date resources, the information included here is intended as a guide. Always refer to the product's installation instructions when fitting, installation work should be completed a professional tradesman.

## ATL9502/

Dimensions in mm. Not to scale.



AGA Rangemaster continuously seeks improvements in specification, design and production of products and thus, alterations take place periodically. Whilst every effort is made to produce up-to date resources, the information included here is intended as a guide. Always refer to the product's installation instructions when fitting, installation work should be completed a professional tradesman.