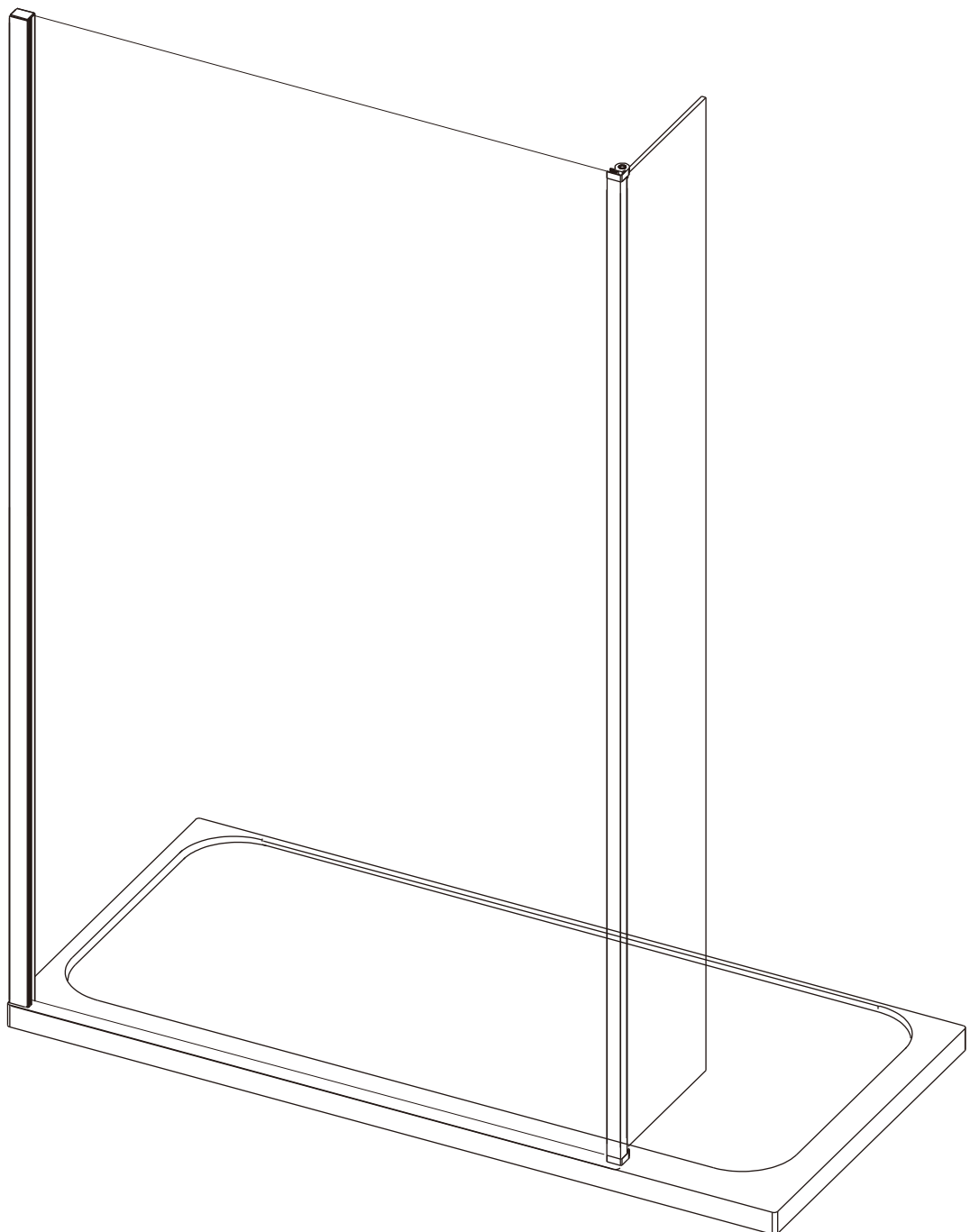


MERLYN™

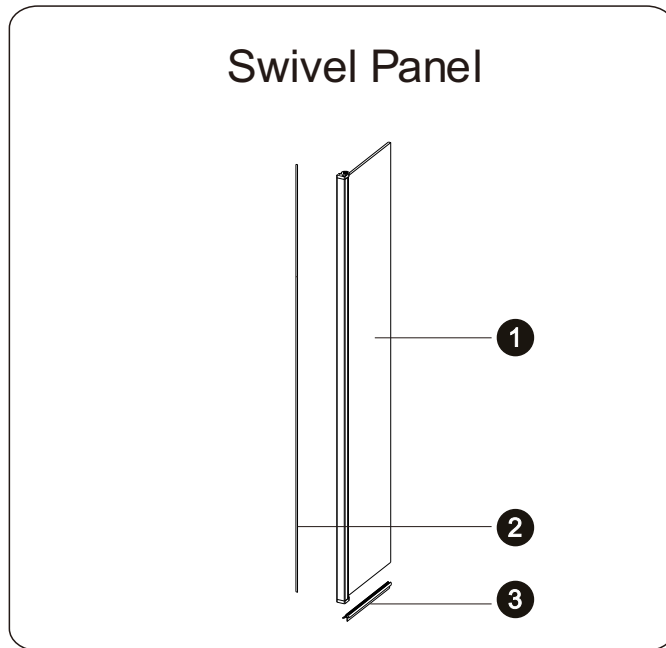
Wetroom Collection

8MM WETROOM SWIVEL PANEL INSTALLATION GUIDE

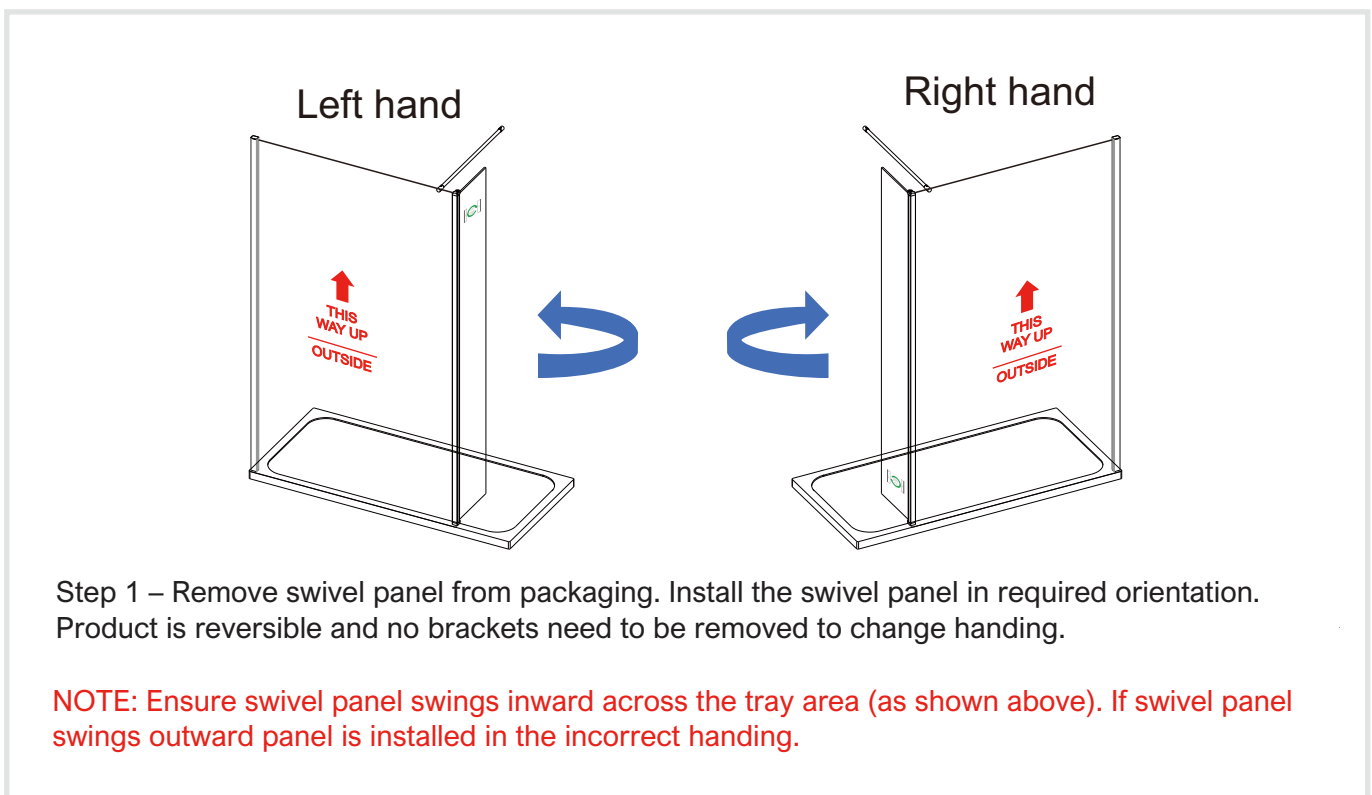


For Standard & Flute Glass

If you install the product in a way that differs from this manual this will void all guarantees. Before installation check that the product meets all your requirements and is not damaged. By proceeding with installation, you accept the condition of the product.



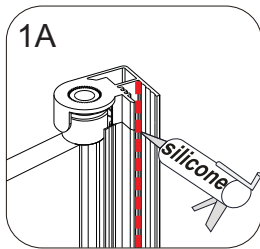
No.	Qty	PART DESCRIPTION	CHROME	MATT BLACK	BRUSHED BRASS	BRUSHED BRONZE	BRUSHED NICKEL	BRUSHED GUN METAL
1	1	GLASS PANEL	A	A	A	A	A	A
2	1	SWIVEL PANEL WEDGE GASKET	A04S0013	A04S0013B	A04S0031	A04S0031	A04S0031	A04S0031
3	1	BOTTOM SEAL	A04S0018	A04S0015B	A04S0015	A04S0015	A04S0015	A04S0015



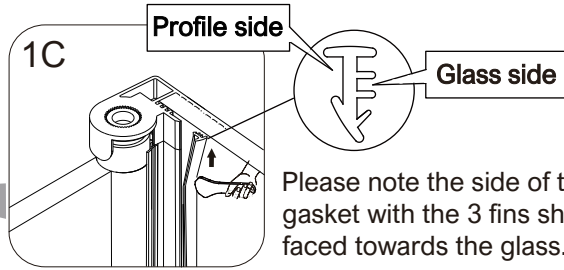
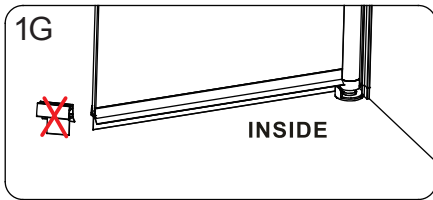
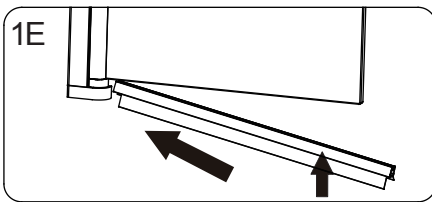
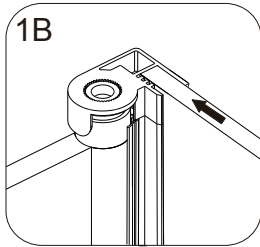
Step 1 – Remove swivel panel from packaging. Install the swivel panel in required orientation. Product is reversible and no brackets need to be removed to change handing.

NOTE: Ensure swivel panel swings inward across the tray area (as shown above). If swivel panel swings outward panel is installed in the incorrect handing.

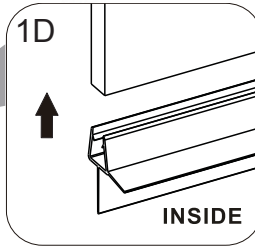
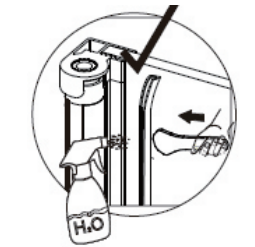
1 **NOTE:** For flute glass panels the flutes need to be on the outside with flat surface on inside.



Silicone top to bottom of profile

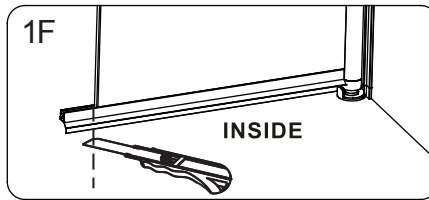


Please note the side of the wedge gasket with the 3 fins should be faced towards the glass.

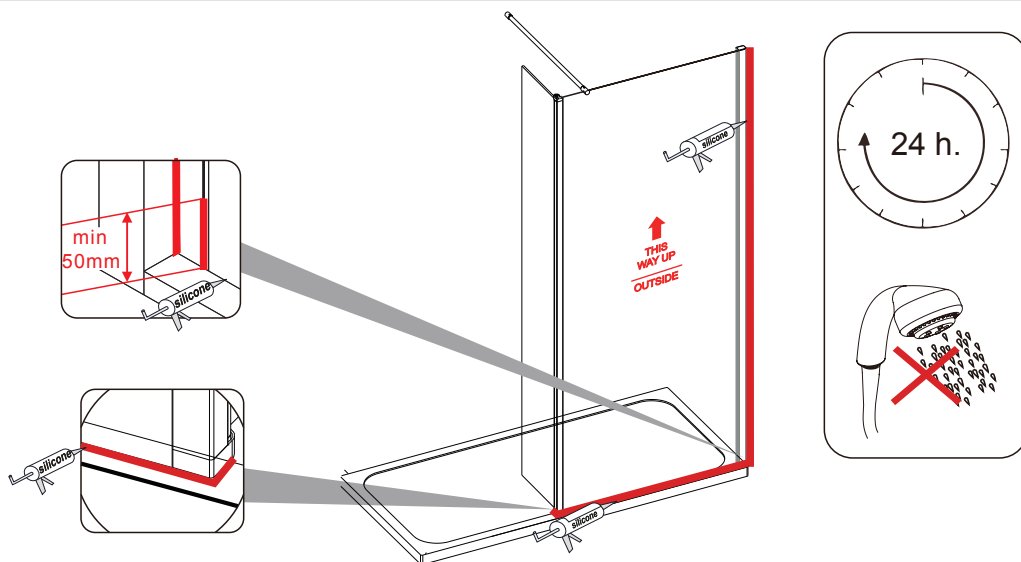


Installing swivel panel bottom seal A04S0018 and A04S0015B follow step 1D.

For notched seal A04S0015 follow below step 1E, 1F and 1G.



2



Before sealing make sure all surfaces are clean, dry and free from any residue such as grout. Use quality silicone sealant and applicator gun to finish the wetroom panels.

Seal top to bottom on the **OUTSIDE** between the wall and the wall profile. Seal along the bottom on the **OUTSIDE** between the glass/rail/profile and the tray or floor. Seal approx 50mm up between the glass and the wall profile.

DO NOT USE FOR 24 HOURS!

To download the Declaration of Performance (DOP) for this product please use the link below.
<https://medynshowering.com/aftersales-support/dop-certs/>
 or further information please contact IRL: 0567791555, UK:08081011429

3