



BY CAVALIER BATHROOMS

Observa 9310BL

TWIN CONCEALED SHOWER VALVE

BLACK

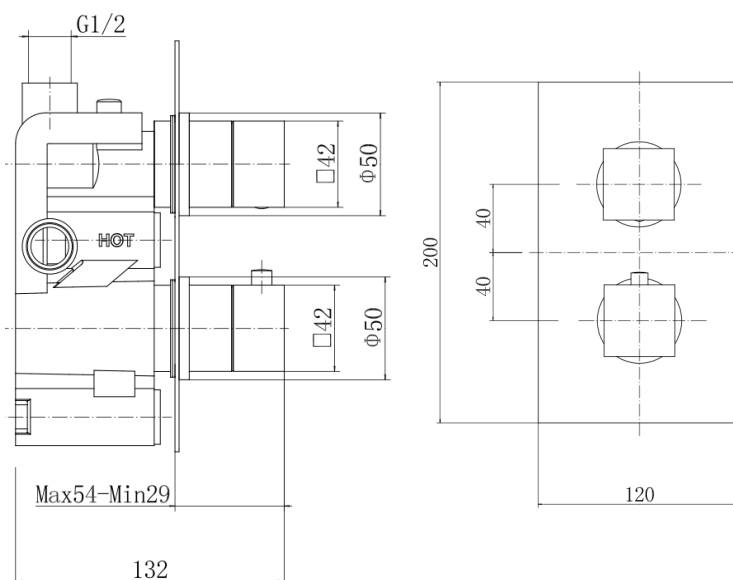
PRODUCT SPECIFICATION

Product Code:	9310BL
Finish:	Matt Black
Product Type:	Twin Concealed Shower Valve
Cartridge Type:	Thermostatic Cartridge and 3/4" Quarter Turn Cartridge
Inlet Connections:	G 3/4"
Outlet Connections:	G 1/2"
Construction:	Body: Brass, handles: Zinc, Plate: SS
Gross Weight (kg):	2.44



ADDITIONAL INFORMATION

- Dual Control: Flow and temperature are controlled separately giving accurate control of both
- Thermostatic cartridge maintains showering temperature to +/- 2c giving a stable outlet temperature
- Automatic shut-off in the event of cold water supply failure, to prevent scalding
- Temperature factory set to a 38°C
- One outlet
- 2 year guarantee*



WORKING PRESSURES (bar)

Min Pressure	Max Pressure	Best Performance
0.5 bar	5 bar	3 bar

FLOW RATES (litres per minute)

0.5 Bar	1 Bar	3 Bar
6.8	9.5	14.3

* For full details of our guarantee please refer to our website. Our products are backed by a 10 year guarantee, this is only valid to customers who complete and submit the online Niagara® Guarantee Registration Form within 30 days of installation. Please note that products with finishes other than Chrome are guaranteed for 2 years only. To register and activate your guarantee visit: www.cavalierbathrooms.co.uk

Products are supplied with full installation instructions and fixings. All measurements in mm and are nominal.