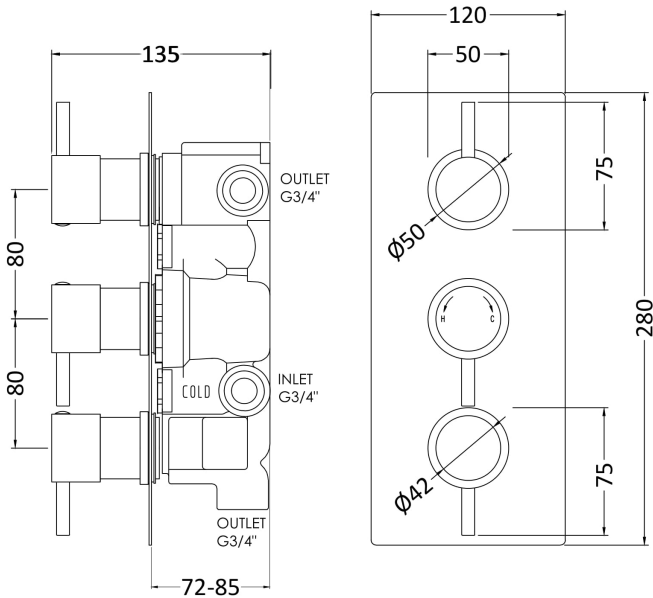


Sales Code: QUEV56

Description: Quest Triple Valve With Diverter



Product Dimensions

| | |
|-------------------|-----|
| Length (mm): | |
| Width (mm): | 120 |
| Height (mm): | 280 |
| Depth (mm): | 130 |
| Nett Weight (kg): | 5 |

Packaging Dimensions

| | |
|--------------------|-----|
| Length (mm): | 320 |
| Width (mm): | 255 |
| Height (mm): | 130 |
| Gross Weight (kg): | 5 |

Packaging Data

| | |
|---------------|---------------------|
| Box Colour: | White Cardboard Box |
| Box Qty: | 1 |
| Label Size: | 100 x 50 |
| Label Colour: | White Label |
| Label Qty: | 2 |

Outer Box Dimensions (If Applicable)

| | |
|--------------------|---------------|
| Length (mm): | |
| Width (mm): | |
| Height (mm): | |
| Depth (mm): | |
| Gross Weight (kg): | |
| Barcode: | 5055275805770 |

Product Details

| | |
|--|-----------------------|
| Country of Origin: | United Kingdom |
| Fitting Instruction: | No |
| Product Material: | Brass |
| Mount Type: | Recessed, Wall |
| Outlet Elbow Supplied: | No |
| Easy Clean: | |
| Head Included: | No |
| Handset Included: | No |
| Body Jets Included: | No |
| No of Body Jets: | |
| Operating Pressure (bar): | 0.5 |
| Valve/Cartridge Type: | 1/4 Turn Ceramic Disc |
| Flow Rates (L/min): 0.1 bar: N/A 0.5 bar: 13 1 bar: 17 2 bar: 24 3 bar: 27 | |
| TMV2 Approved: | No Approval No: N/A |
| TMV3 Approved: | No Approval No: N/A |
| WRAS Approved: | No Approval No: N/A |
| Head Function: | Not Applicable |
| Handset Function: | |
| Body Jet Info: | Not Applicable |
| Pipe Size: | 15 mm & 22 mm |
| Pipe Centres: | Not Applicable |
| Colour/Finish: | Chrome |
| Hose Included: | |
| No. of Outlets: | 3 |