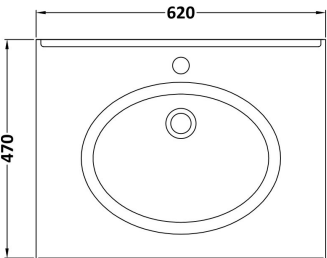
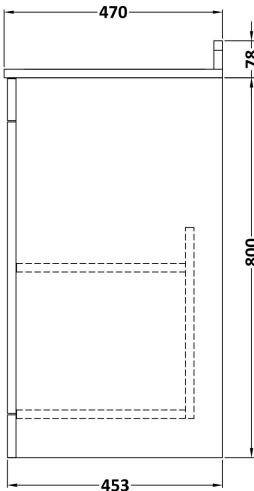
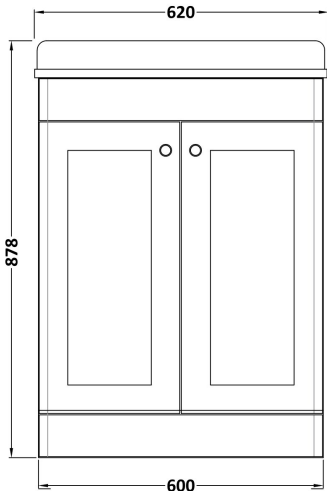


Sales Code: CLC825BR1

Description: 600 F/S 2-Door Unit & Marble Top 1Th

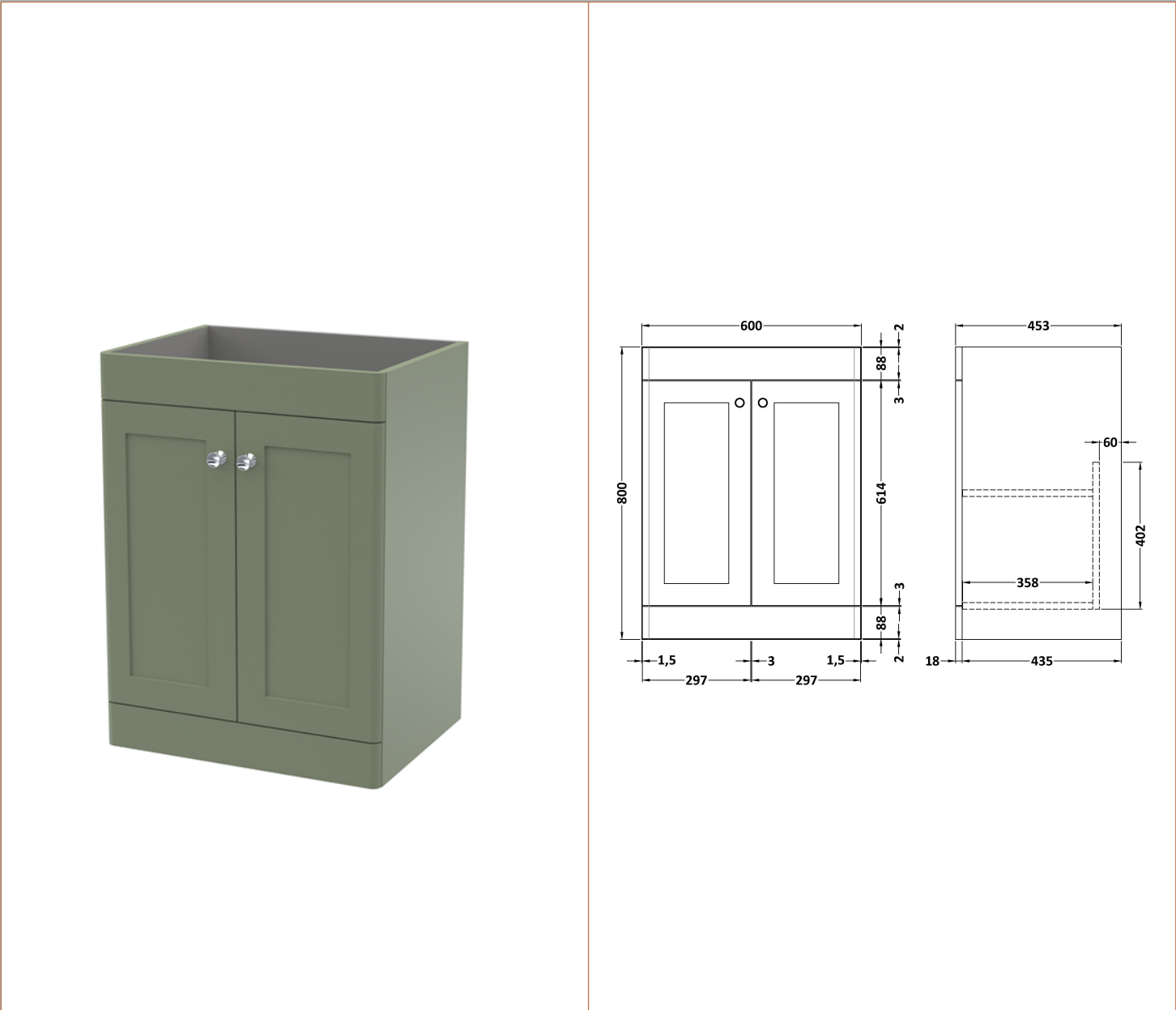


Packaging Details

Barcode: 5056678416938

Sales Code: CLA825

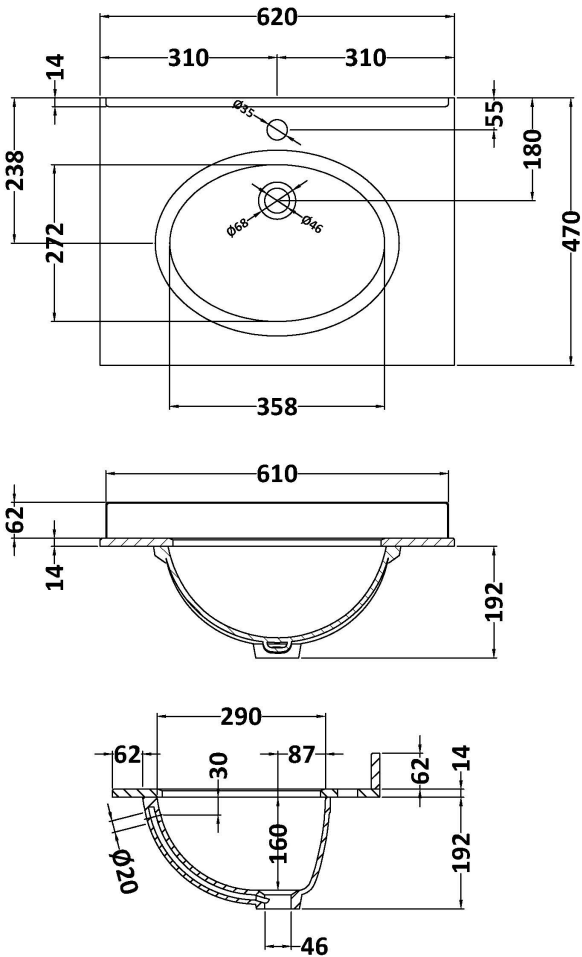
Description: 600 F/S 2-Door Unit (800X600x453)



| Product Dimensions | |
|--------------------------------------|------------------------------|
| Height (mm): | 800 |
| Width (mm): | 600 |
| Depth (mm): | 453 |
| Nett Weight (kg): | 25.3 |
| Packaging Dimensions | |
| Height (mm): | 835 |
| Width (mm): | 625 |
| Depth (mm): | 480 |
| Gross Weight (kg): | 25.8 |
| Packaging Data | |
| Box Colour: | Brown Cardboard Box |
| Box Qty: | 1 |
| Label Size: | 100 x 50 |
| Label Colour: | White Label |
| Label Qty: | 2 |
| Outer Box Dimensions (If Applicable) | |
| Height (mm): | |
| Width (mm): | |
| Depth (mm): | |
| Gross Weight (kg): | |
| Barcode: | 5056462643168 |
| Product Details | |
| Country of Origin: | China |
| Fitting Instruction: | No |
| CE & UKCA: | N/A |
| FSC Certified Materials: | Yes |
| Colour: | Satin Green |
| Construction Method: | Cam & Wood Dowel |
| Construction Type: | Rigid |
| Cabinet Finish: | MFC Painted Matt |
| Fascia Finish: | Mdf Painted Matt |
| Cabinet Thickness (mm): | 18 |
| Fascia Thickness (mm): | 18 |
| Drawer Included: | No |
| Drawer Type: | Not Applicable |
| No of Shelves: | 1 |
| Hinge Type: | 95 Degree Clip-On Soft Close |
| Hinge Included: | Yes, Supplied |
| Adjustable Legs: | No, Not Required |
| Fixings Included: | Yes |
| Handle Style: | Traditional |
| Waste Shroud: | Not Applicable |
| Handle Included: | Yes, Supplied |
| Handle Type: | Knob |

Sales Code: LOM221

Description: 600 Single Bowl Marble Top 1Th



Product Dimensions

| | |
|-------------------|------|
| Height (mm): | 268 |
| Width (mm): | 620 |
| Depth (mm): | 463 |
| Nett Weight (kg): | 13.5 |

Packaging Dimensions

| | |
|--------------------|-----|
| Height (mm): | 310 |
| Width (mm): | 700 |
| Depth (mm): | 550 |
| Gross Weight (kg): | 14 |

Packaging Data

| | |
|---------------|---------------------|
| Box Colour: | White Cardboard Box |
| Box Qty: | 1 |
| Label Size: | 100 x 50 |
| Label Colour: | White Label |
| Label Qty: | 2 |

Outer Box Dimensions (If Applicable)

| | |
|--------------------|---------------|
| Height (mm): | |
| Width (mm): | |
| Depth (mm): | |
| Gross Weight (kg): | |
| Barcode: | 5056211818960 |

Product Details

| | |
|---------------------------|--------------------------------|
| Country of Origin: | China |
| Fitting Instruction: | No |
| Certification: CE & UKCA: | N/A |
| WRAS: | N/A |
| WRAS No: | N/A |
| Product Material: | Vitreous China, Natural Marble |
| Fixing Supplied: | No |

| | | |
|--------------|----------------------------|-------------------------------|
| Pans/Bidets: | Trap Style: Not Applicable | Includes Seat: Not Applicable |
|--------------|----------------------------|-------------------------------|

| | | |
|--------|--------------------------------|----------------------------|
| Seats: | Seat Type: Not Applicable | Material: Not Applicable |
| | Function: Not Applicable | Hinge Type: Not Applicable |
| | Hinge Material: Not Applicable | |

| | | |
|-----------|--------------------------------|--------------------------|
| Cisterns: | Operating Type: Not Applicable | Fittings: Not Applicable |
| | Lever Type: Not Applicable | |

| | | |
|---------|--------------------------|-------------------------|
| Basins: | Tap Hole: One Taphole | Chain Stay Hole: No |
| | Template: Not Applicable | Waste Type Req: Slotted |
| | Overflow Inc: Yes | Overflow Cover: Yes |
| | Inner Bowl Depth (mm): | 160mm |