

Product Data Sheet: AMBBTWCS / Concealed fixings

**Ambulant Doc M pack - Back to wall toilet with stainless steel grab rails**



**Product Detail:**

- 2 x 600mm grab rails
- 1 x 450mm grab rail
- 1 x Ring only toilet seat with stainless steel hinge
- 1 x Spatula cistern lever
- 1 x Back to wall WC pan assembly
- ?Concealed fixings

Complies with Doc M of the Building Regulations

WRAS approved

All components available as individual products

**Reference (specify):** AMBBTWCS / Concealed fixings

Available colours/finishes

DB

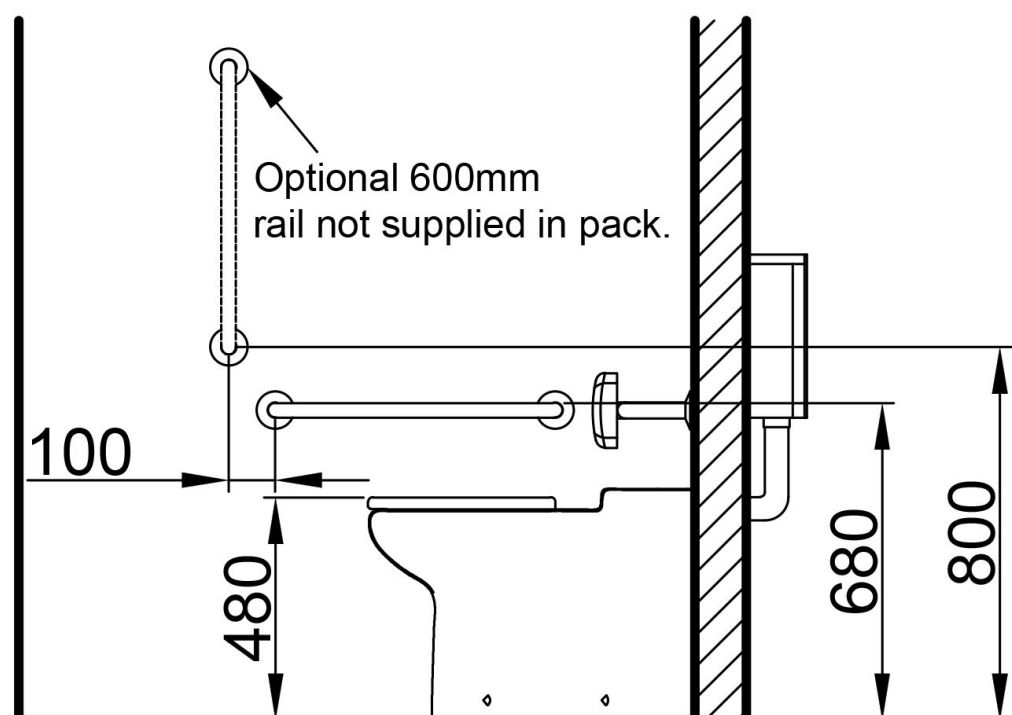
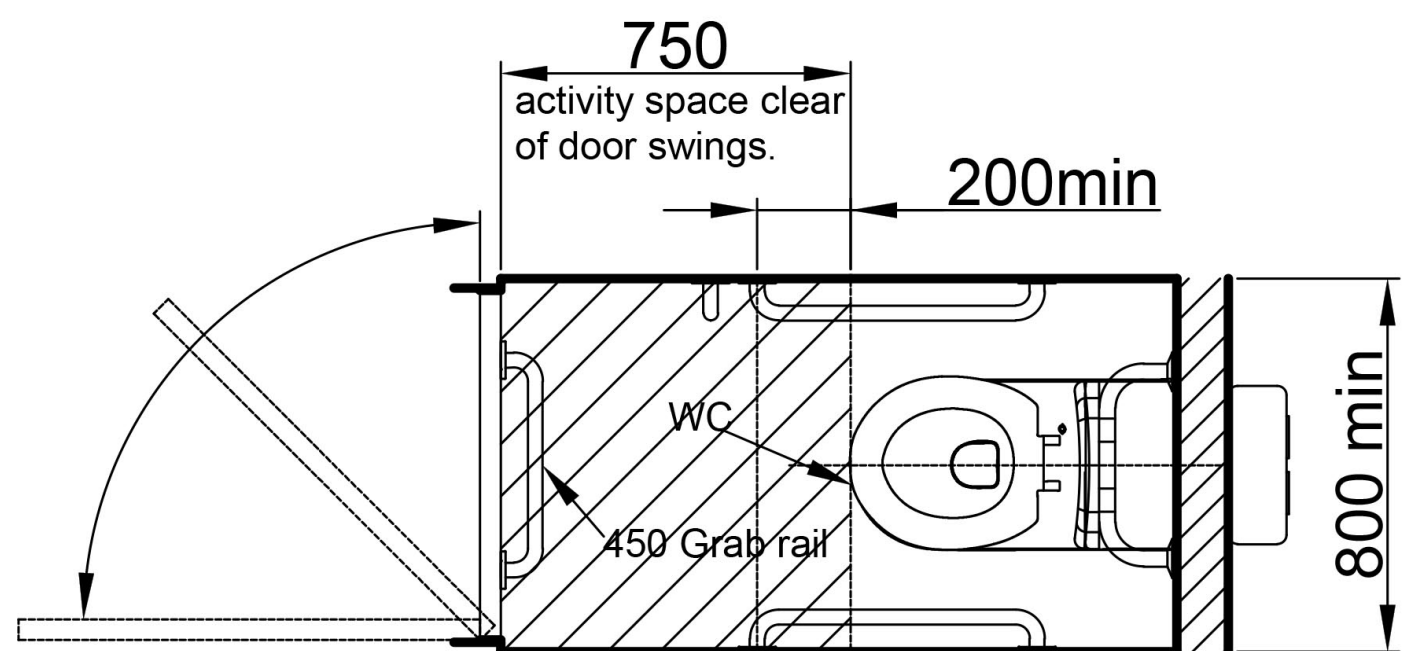
DG

GY

SP

SS

WH



Above is for guidance only, refer to relevant building regulations (Only Nymas components shown. See data sheet for pack components).

| Order Code      | Size (A)                 |
|-----------------|--------------------------|
| <b>AMBBTWCS</b> | <b>Concealed fixings</b> |

PLEASE NOTE: Every effort has been made to ensure as much accuracy as possible. However, due to print restrictions exact colour match is not always possible. Featured products may also be changed from time to time, but are correct at time of publication.

\* Terms and Conditions apply - [www.nymas.co.uk/warranties](http://www.nymas.co.uk/warranties)