

Product Data Sheet: 230015

NymaCARE Right hand Closed Coupled Doc M pack with TMV3



Product Detail:

- 4 x 600mm Grab rails with concealed fixings
- 1 x 450mm Grab rail with concealed fixings
- 1 x 800mm Friction hinged rail
- 1 x Back rest rail (wall hung & back to wall only)
- 1 x Pan & cistern including cistern fittings
- 1 x Ring only toilet seat with stainless steel hinge
- 1 x Single tap hole basin & fittings
- 1 x Spatula cistern lever
- 1 x Sequential TMV3 basin mixer

Aluminium / stainless steel construction grab rails

Complies with Doc M of the Building Regulations

LABC approved

WRAS approved

All components available as individual products for continuity of specification

Nylon flange with stainless steel cover

Reference (specify): 230015

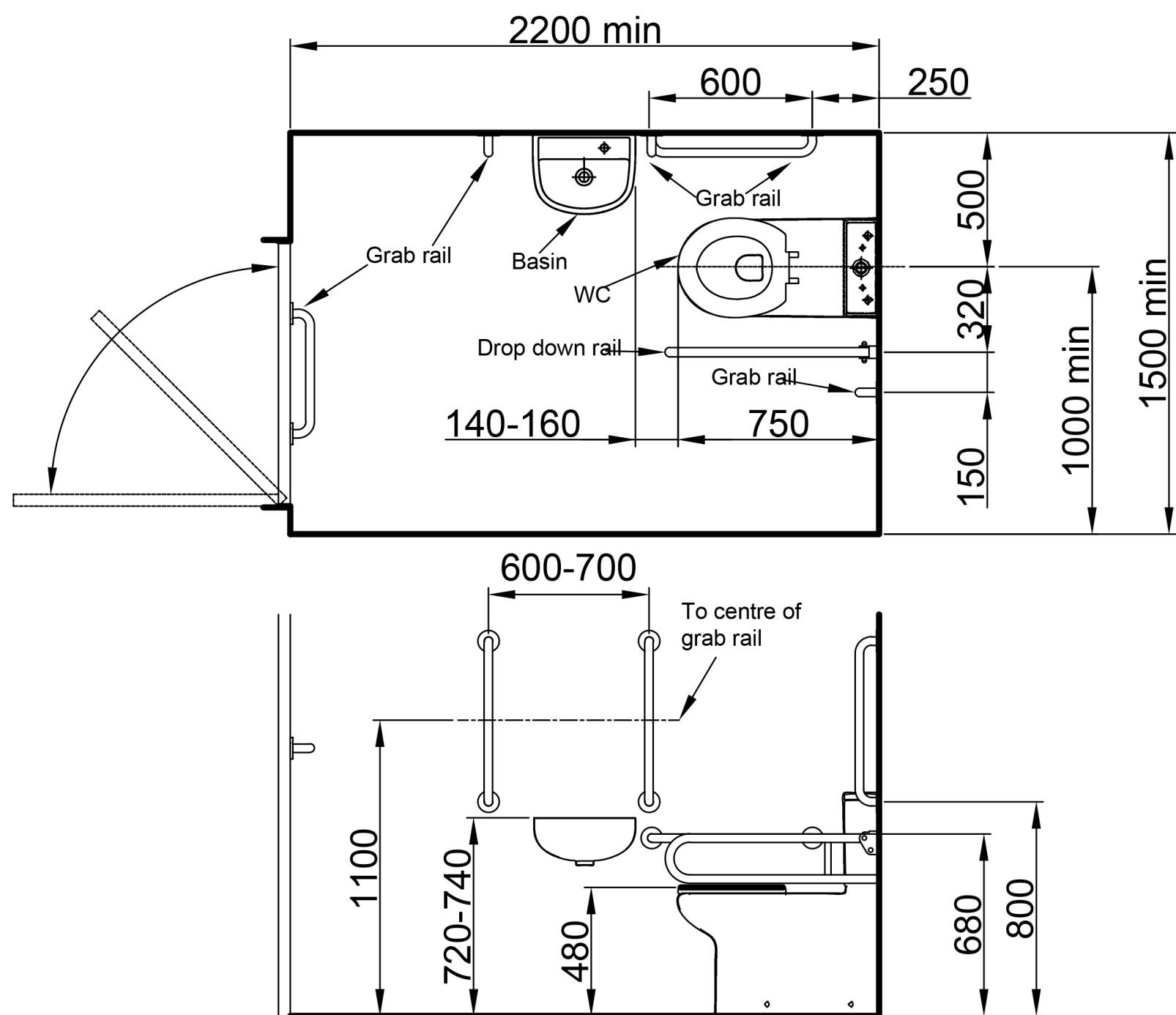
Available colours/finishes

DB

DG

GY

WH



Above is for guidance only, refer to relevant building regulations
(Only Nymas components shown. See data sheet for pack components).

Order Code	Size (A)
230015	

PLEASE NOTE: Every effort has been made to ensure as much accuracy as possible. However, due to print restrictions exact colour match is not always possible. Featured products may also be changed from time to time, but are correct at time of publication.

* Terms and Conditions apply - www.nymas.co.uk/warranties