

Product Data Sheet: 322011

NymaSTYLE Luxury Close Coupled Doc M packs with contemporary sanitaryware (left hand, TMV3 valve)



Product Detail:

- 4 x 620mm Luxury Stainless Steel grab rails
- 1 x 480mm Luxury Stainless Steel grab rail
- 1 x 800mm Single arm friction hinged rail
- 1 x Pan & cistern
- 1 x Ring only toilet seat with stainless steel hinge
- 1 x Two tap hole basin & fittings
- 1 x Spatula cistern lever
- 1 x Sequential basin mixer
- 1 x TMV3 valve

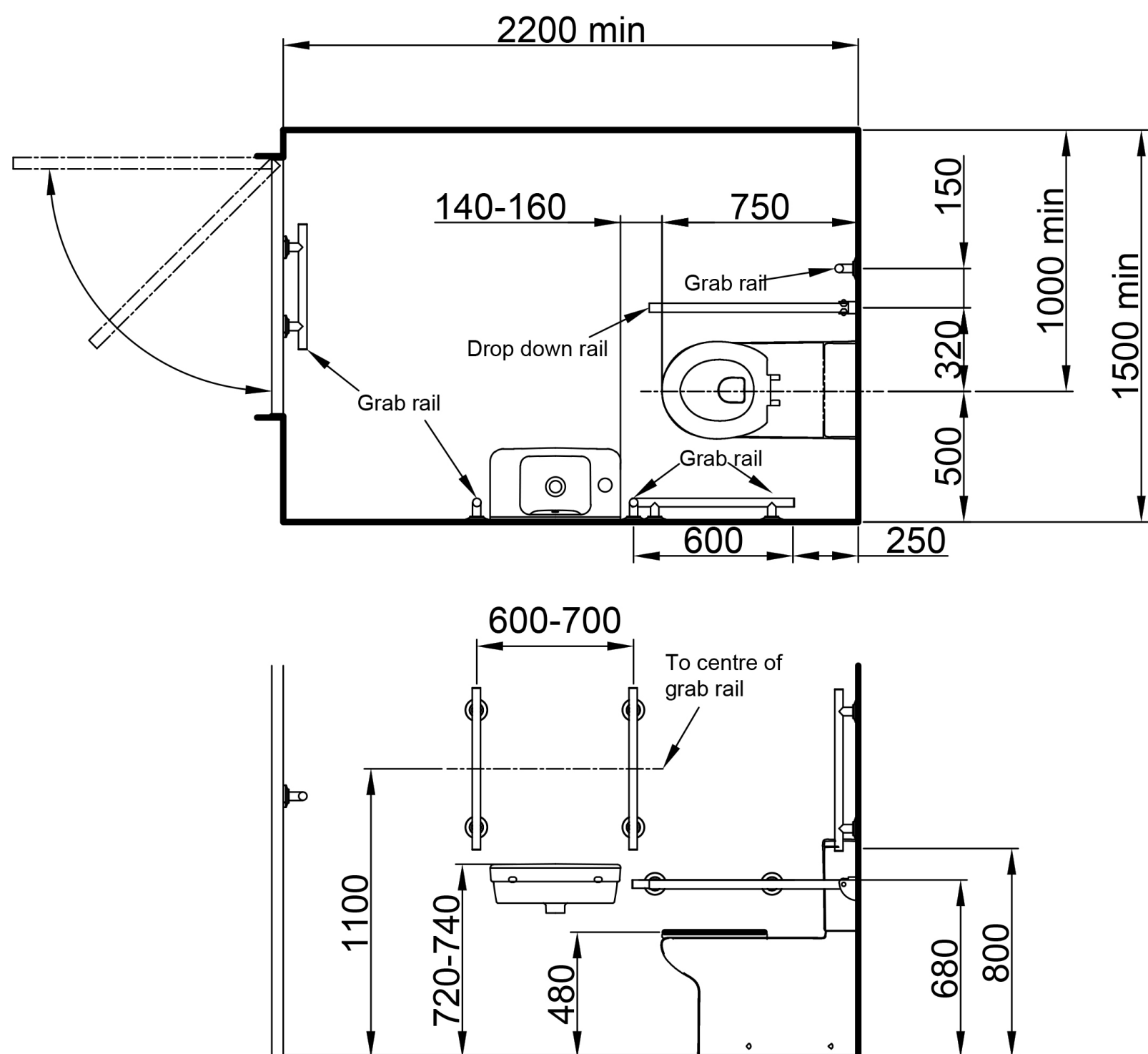
Complies with Doc M of the Building Regulations
Rust-resistant grade 304 stainless steel luxury grab rails with concealed fixings
LABC approved
WRAS approved
All components available as individual products

Reference (specify): 322011

Available colours/finishes

SP

SS



Above is for guidance only, refer to relevant building regulations
(Only Nymas components shown. See data sheet for pack components).

Order Code	Size (A)
322011	

PLEASE NOTE: Every effort has been made to ensure as much accuracy as possible. However, due to print restrictions exact colour match is not always possible. Featured products may also be changed from time to time, but are correct at time of publication.

* Terms and Conditions apply - www.nymas.co.uk/warranties