

Product Data Sheet: DM215K / Exposed fixings

Low level Doc M pack steel grab rails



Product Detail:

- 5 x 600mm grab rails
- 1 x 800mm lift & lock hinged rail
- 1 x Back rest rail with PU pad
- 1 x Low level WC pan & cistern
- 1 x Ring only toilet seat with stainless steel hinge
- 1 x Two tap hole basin & fittings
- 1 x Sequential basin mixer tap
- 1 x Spatula cistern lever
- 1 x TMV3 in-line thermostatic valve (optional)
- 1 x WRAS approved cistern fittings
- 1 x Tap hole cover

Complies with Doc M of the Building Regulations

LABC approved

WRAS approved

All components available as individual products

Toilet seat with adjustable buffers and stainless steel pillar hinge

Universal - left or right handed

Reference (specify): DM215K / Exposed fixings

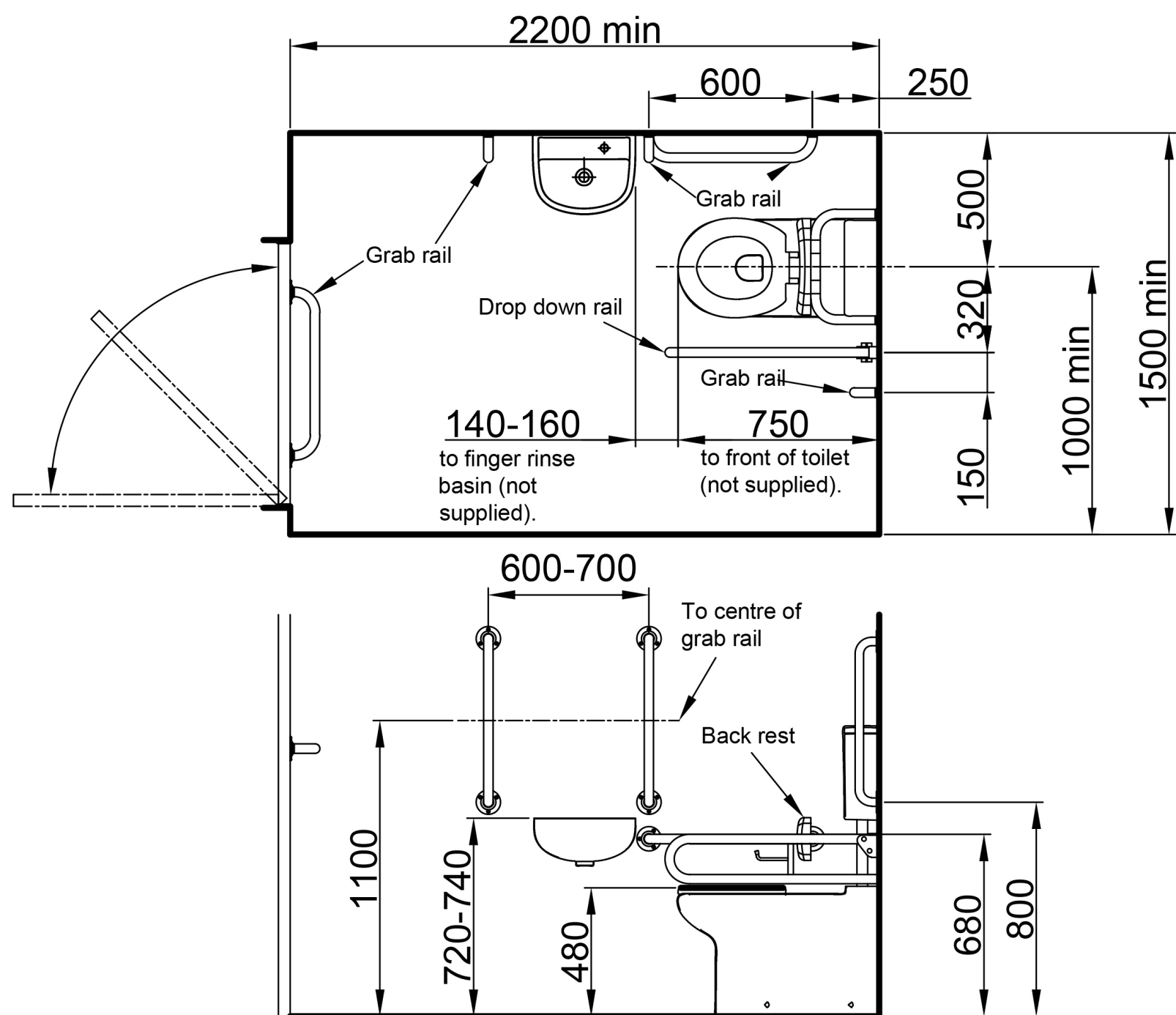
Available colours/finishes

DB

DG

GY

WH



Above is for guidance only, refer to relevant building regulations
(Only Nymas components shown. See data sheet for pack components).

Order Code	Size (A)
DM215K	Exposed fixings
DM215KC	Concealed fixings
DMLL	Exposed fixings (with TMV3 valve)
DM315K	Concealed (with TMV3 valve)

PLEASE NOTE: Every effort has been made to ensure as much accuracy as possible. However, due to print restrictions exact colour match is not always possible. Featured products may also be changed from time to time, but are correct at time of publication.

* Terms and Conditions apply - www.nymas.co.uk/warranties