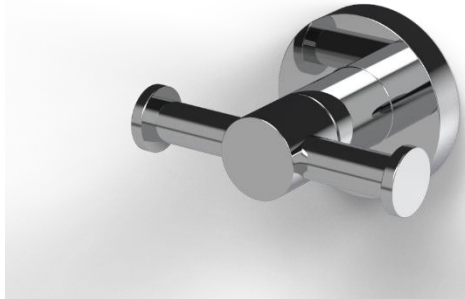


Double robe hook



Product details

Warranty: 5 years

Max load: N/A

Doc M compliant: No

Suitable for wet areas: Yes

Features

- Contemporary design
- Solid brass construction

Finish options



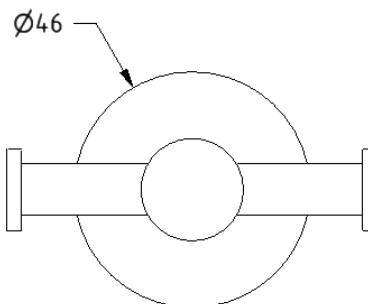
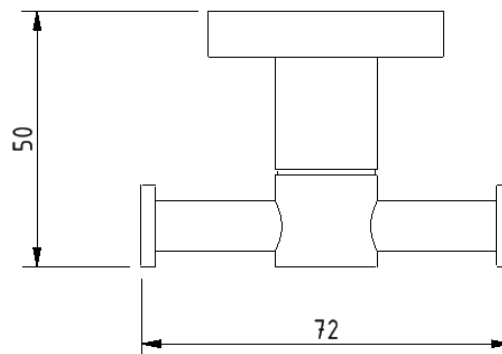
Product description

Double robe hook, polished chrome

Product code

343011/CP

Dimensions (mm)



Need some product advice? Contact our team of product specialists
+44(0)1642 710 719 | sales@fitzroyoflondon.com

www.fitzroyoflondon.com

DAT-343011 Doc Rev 1

Fitzroy of London may occasionally need to change specification of products and/or kit contents and reserves the right to do so. We strive to keep our documentation up to date; however, we cannot guarantee this. We accept no liability for any information given on this data sheet.