

Wall hung Doc M toilet pack with steel concealed fixing grab rails



Product details

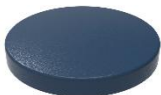
Warranty:	See individual products
Max load:	See individual products
Doc M compliant:	Yes
Suitable for wet areas:	No

Features

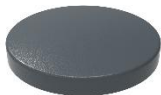
- Complies with Part M of the Building Regulations
- Inlet valve and syphon Reg 4 Certified (WRAS, NSF, Kiwa, etc.)
- Concealed fixing grab rails
- Optional TMV3 valve (DM850KC/**)
- Universal - suitable for left or right handed transfer
- Simple one box solution

Finish options

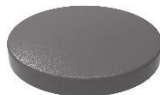
Powder Coated



DB
Dark Blue (RAL 5011)



DG
Dark Grey (RAL 7016)



GY
Grey (RAL 7006)



WH
White (RAL 9016)

Product description

Wall hung Doc M toilet pack, steel, concealed fixings

Wall hung Doc M toilet pack, steel, concealed fixings, TMV3 valve

Product code

DM830KC/**

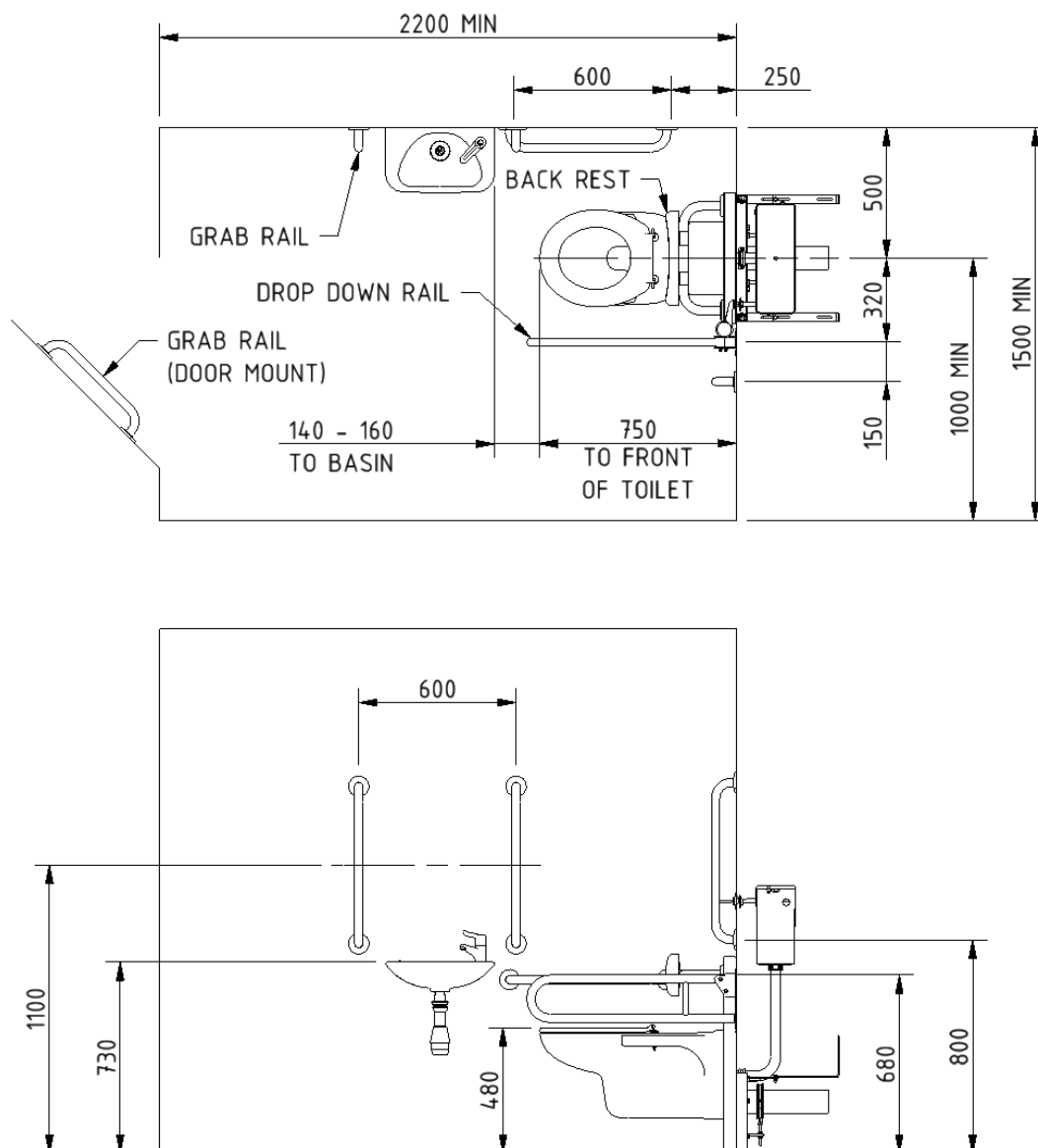
DM850KC/**

Replace ** with 2-character short code for chosen finish (Powder Coated).
e.g., DM830KC/DB

Pack contents

- 5 x 600mm coated steel grab rails with concealed fixings
- 1 x 800mm coated steel hinged support rail with toilet roll holder
- 1 x 220mm coated steel back rest rail and pad with concealed fixing
- 1 x Wall hung box rim Doc M pan
- 1 x Floor mounting frame for wall hung pan
- 1 x Concealed cistern with fittings, flush pipe, and Doc M concealed cistern spatula lever
- 1 x Ring only toilet seat
- 1 x Compact finger rinse Doc M basin
- 1 x Sequential basin mixer tap
- 1 x Tap hole stopper
- 1 x Basin waste
- 1 x TMV3 Valve (DM850KC/** only)

Dimensions (mm)



Fitzroy of London may occasionally need to change specification of products and/or kit contents and reserves the right to do so. We strive to keep our documentation up to date; however, we cannot guarantee this. We accept no liability for any information given on this data sheet.

Wall hung Doc M pan



Product details

Warranty:	5 years
Max load:	N/A
Doc M compliant:	Yes
Suitable for wet areas:	Yes

Features

- Extended projection to aid compliance with Part M of the Building Regulations
- UKCA and CE compliant
- Contemporary feel
- Box rim ran

For 750mm projection, wall should be built out by 50mm

Finish options



WH
White

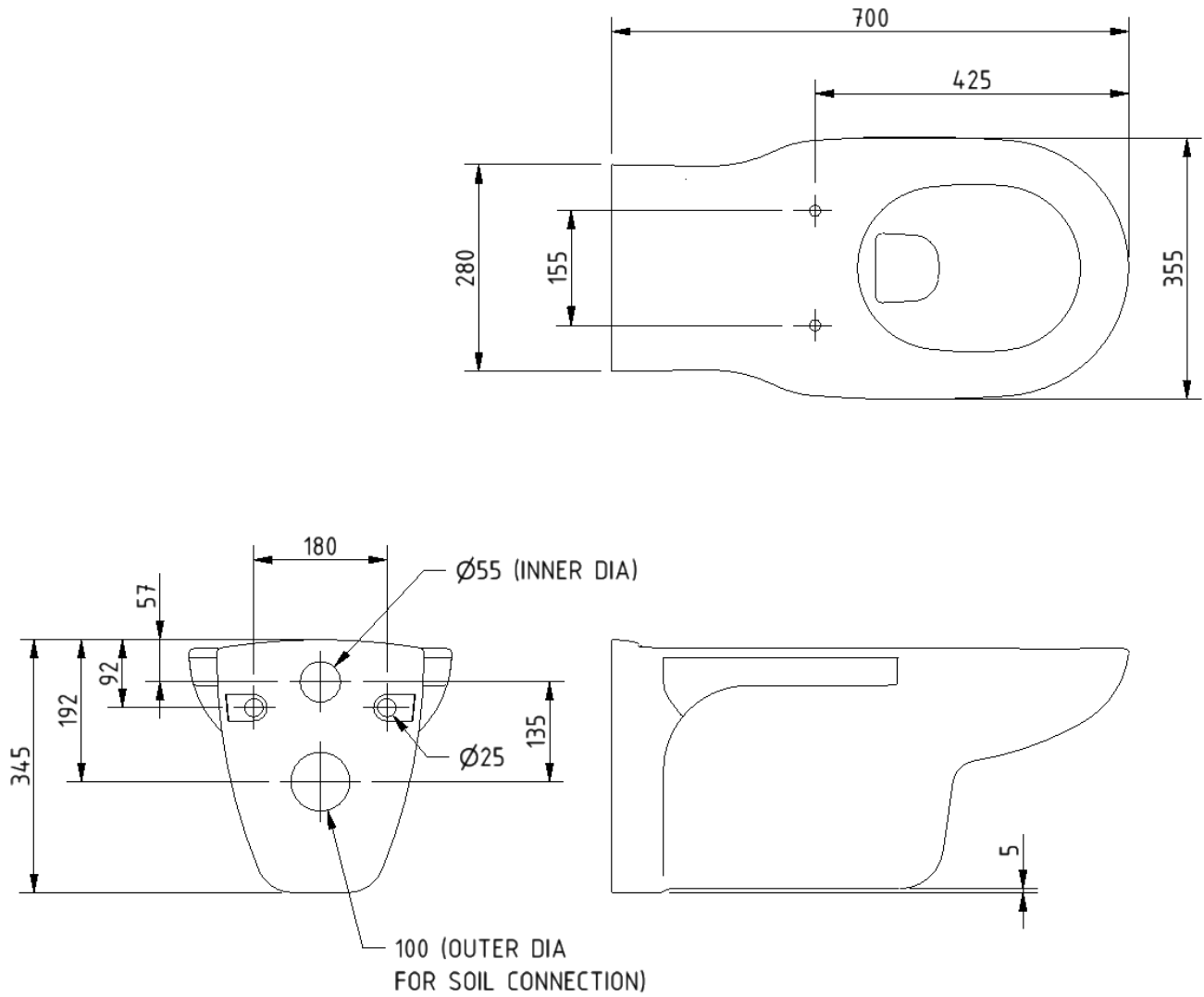
Product description

Wall hung Doc M pan, 700mm projection, no fixings, white

Product code

PANWH70

Dimensions (mm)



Low frame unit for wall hung pan



Product details

Warranty: 5 years

Max load: 400 kg

Doc M compliant: Yes

Suitable for wet areas: Yes

Features

- Comes with flush pipe and WC pan connector clamps
- Adjustable legs for WC pan height fixing flexibility
- Wall and floor fixing brackets can be fixed through 180 degrees and 360 degrees to simplify installation
- Strong steel square hollow construction
- Load tested to 4kN for compliance with BS EN 997

Finish options

- As standard:**
- Blue powder coated
 - Zinc plated wall and floor brackets

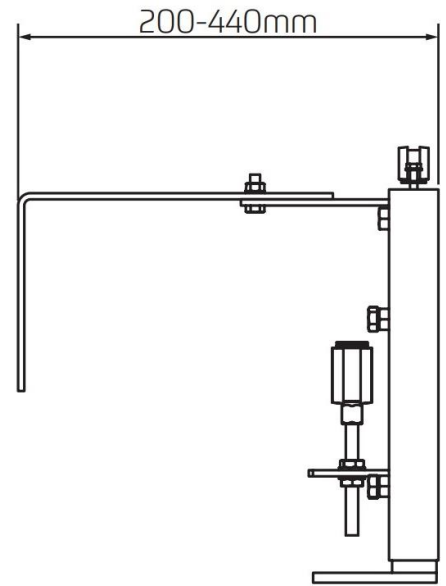
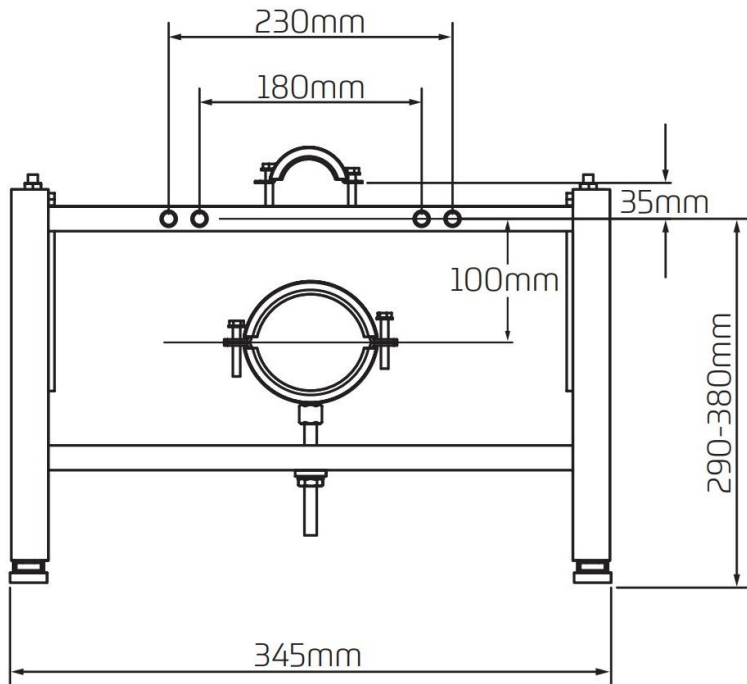
Product description

Low frame unit for wall hung pan

Product code

B-WALLHUNGFRAME

Dimensions (mm)



*For distances between 160-200mm the brackets will need to be reduced in length by cutting.

Toilet seat, ring only, stainless steel pillar hinge



Product details

Warranty: 2 years

Max load: 150 kg

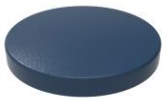
Doc M compliant: Yes

Suitable for wet areas: Yes

Features

- Complies with Part M of the Building Regulations
- Anti-bacterial, strong and durable Duroplast seat
- Ergonomic and comfortable shape
- Stainless steel hinge (bottom fix as standard)
Additional hinge pack to convert to top fix: NY-TOPFIXHINGE
- Adjustable locating buffers
- Fits close coupled, low level, back to wall and wall hung pans

Finish options



DB
Dark Blue (RAL 5011)



DG
Dark Grey (RAL 7016)



GY
Grey (RAL 7005)



WH
White (RAL 9016)

Product description

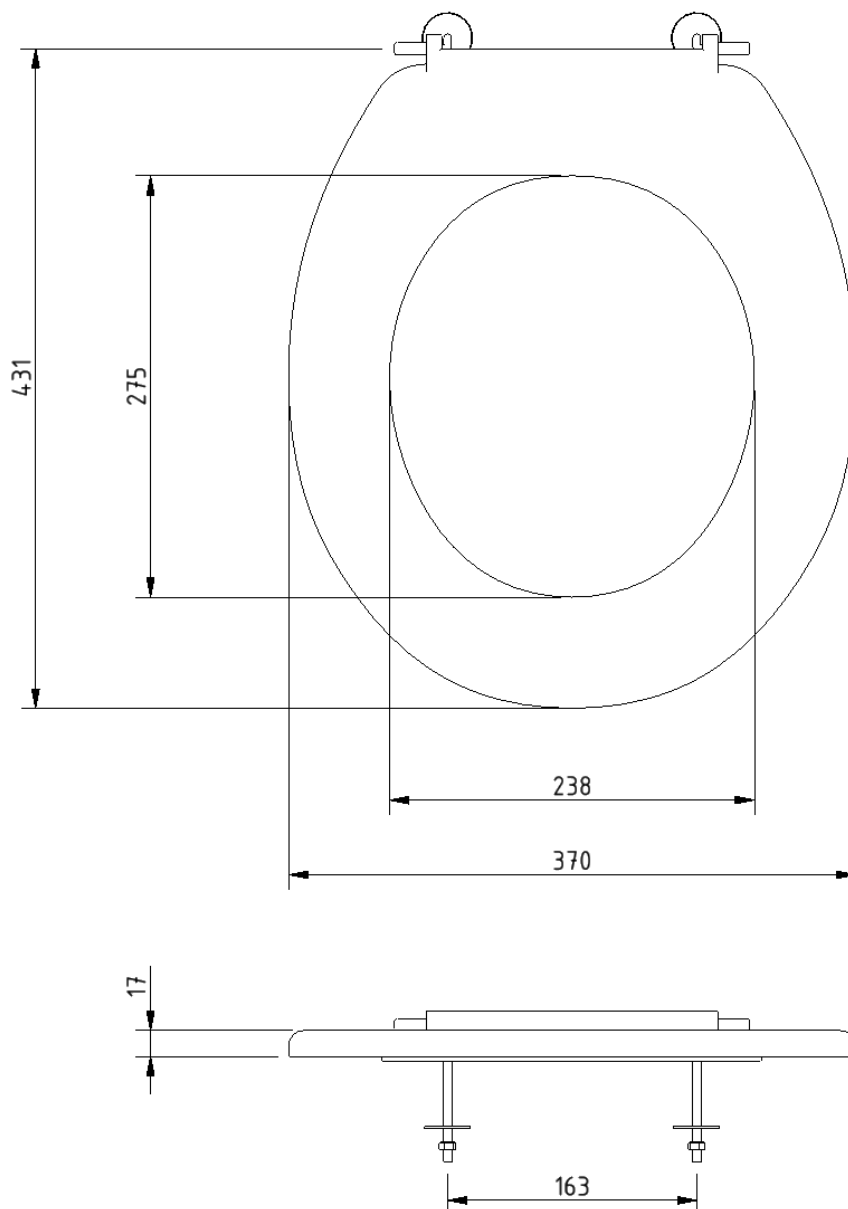
Toilet seat, ring only, stainless steel pillar hinge

Product code

260015/**

Replace ** with 2-character short code for chosen finish.
e.g., 260015/DB

Dimensions (mm)



Concealed cistern and fittings



Product details

Warranty: 2 years

Max load: N/A

Doc M compliant: N/A

Suitable for wet areas: Yes

Features

- Syphon and inlet valve Reg 4 Certified (WRAS, NSF, Kiwa, etc.)
- Top access
- 6 litre flush
- Internal / external overflow warning
- High density polystyrene construction

Does not come with flush lever or flush pipe

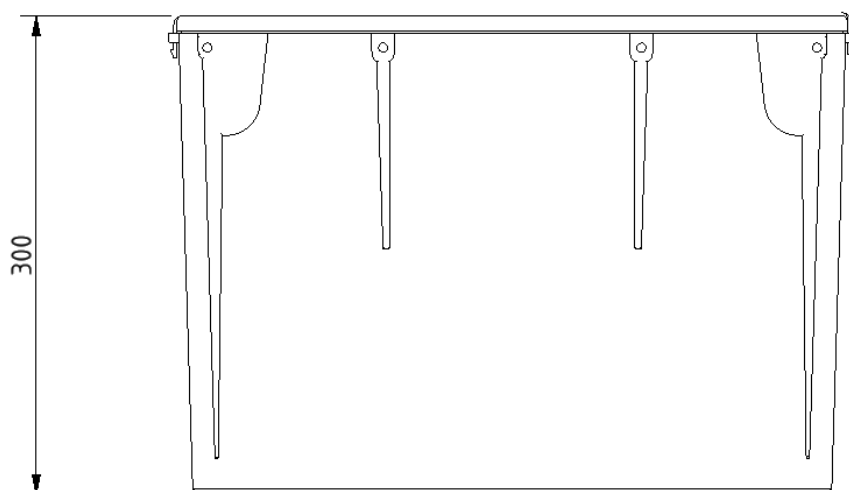
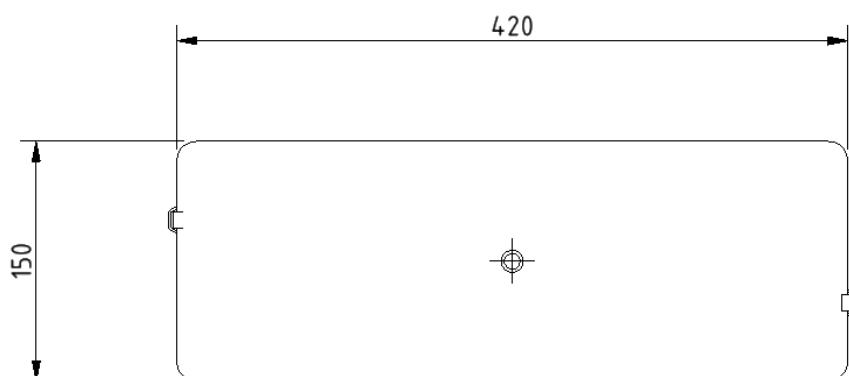
Product description

Concealed cistern and fittings, no lever or flush pipe

Product code

B-CISTHIDE

Dimensions (mm)



Concealed cistern spatula lever



Product details

Warranty: 2 years

Max load: N/A

Doc M compliant: Yes

Suitable for wet areas: Yes

Features

- Complies with Part M of the Building Regulations
- Easy operation for users with limited dexterity
- For use with concealed cisterns

Finish options

Powder Coated



CP
Polished Chrome

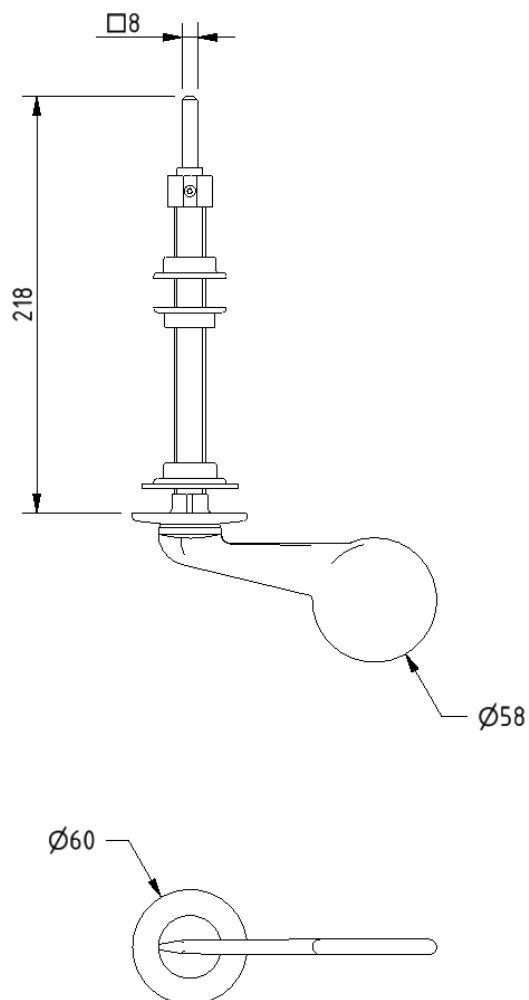
Product description

Concealed cistern spatula lever, 215mm spindle, polished chrome

Product code

P-000243-X00X

Dimensions (mm)



Compact finger rinse Doc M basin



Product details

Warranty: Lifetime

Max load: N/A

Doc M compliant: Yes

Suitable for wet areas: Yes

Features

- Two tap holes for left or right-handed configuration
- Compact design to maximise space for a wheelchair user
- Complies with Part M of the Building Regulations
- Contemporary design
- No overflow
- CE Marked, compliant sanitary ware
- Wall fixings included

Finish options



WH
White (RAL 9016)

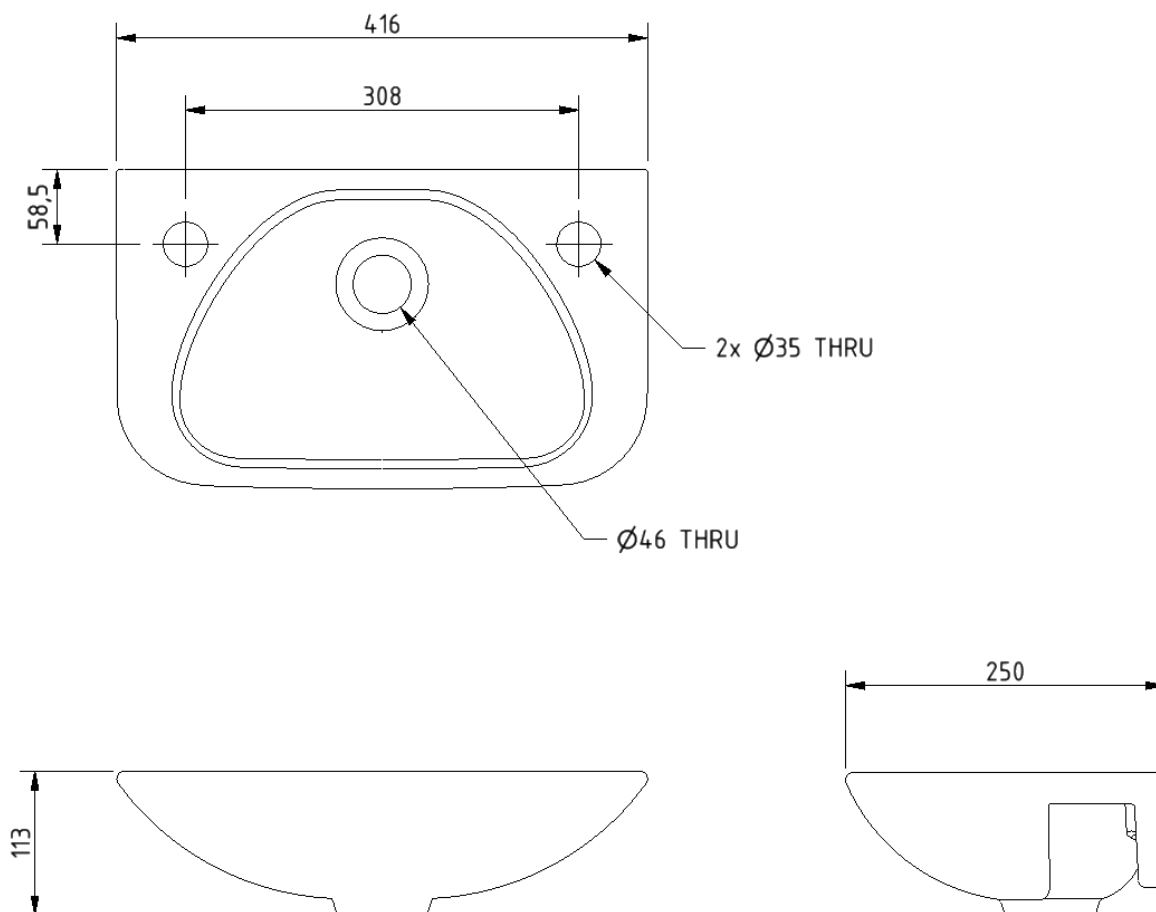
Product description

Compact finger rinse Doc M basin, two tap holes, no overflow, white (RAL 9016)

Product code

F20-BA01-CER-WH

Dimensions (mm)



Basin waste with stainless steel grid, no plug



Product details

Warranty:	2years
Max rated load:	n/a
Doc M compliant:	n/a
Suitable for wet areas:	Yes

Features

- Quick and simple installation
- Manufactured from high quality materials
- Stainless steel grid
- Plastic Body

Finish options

Not applicable

Product description

Basin waste with stainless steel grid, no plug

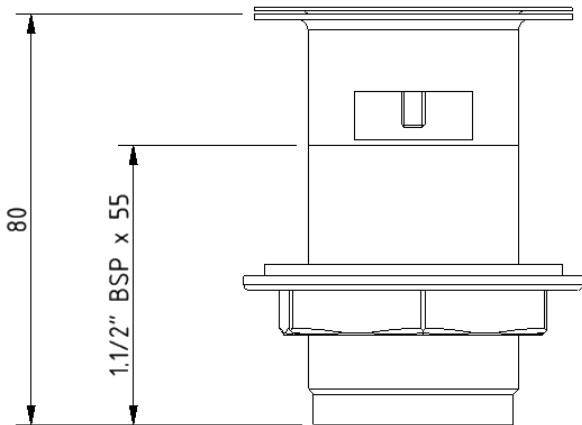
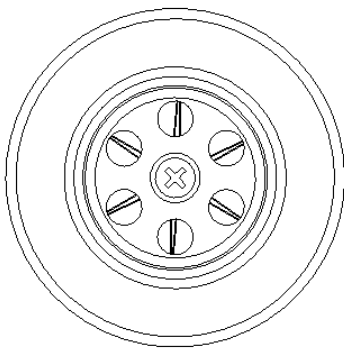
Product code

P-000241-X00X

Disclaimer

NYMAS Group makes every effort to ensure that the information provided on this data sheet is correct. However, we cannot guarantee this, and accept no liability for any information or advice given on this data sheet.

Dimensions (mm)



Polished chrome sequential basin mixer tap



Product details

Warranty:	2 years
Max load:	N/A
Doc M compliant:	Yes
Suitable for wet areas:	Yes
Flexi tap tail connection (to tap body):	M10 thread
Flexi tap tail (onward connection):	½ inch BSP

Features

- Reg 4 certified (WRAS, NSF, Kiwa, etc.)
- Easy operation for users with limited dexterity
- Cold start

Finish options



CP
Polished Chrome

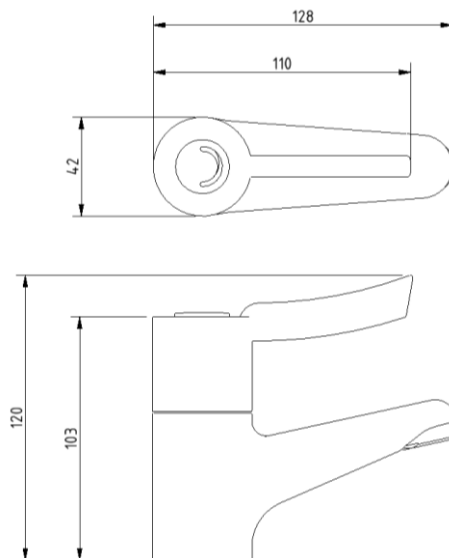
Product description

Product code

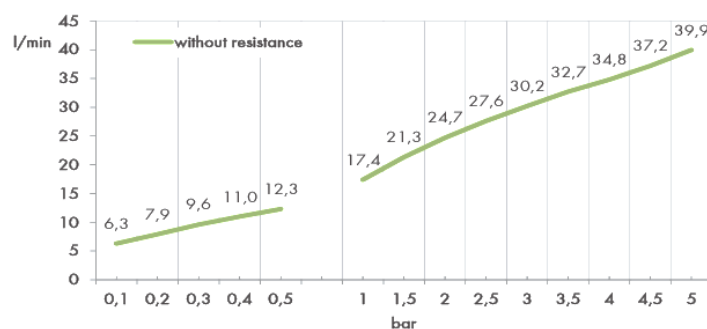
Sequential basin mixer tap, polished chrome

BPLMON

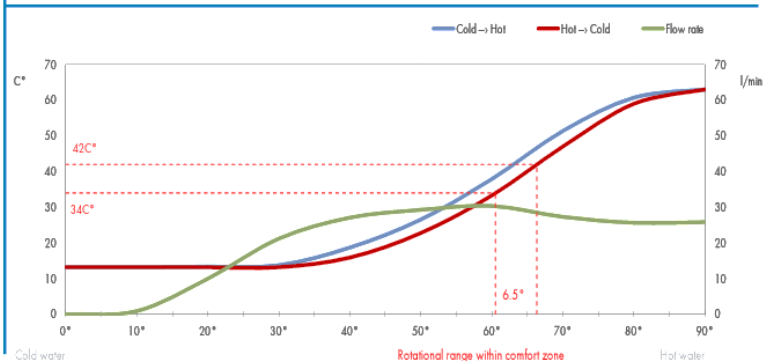
Dimensions (mm)



FLOW RATE CURVE



FLOW RATE & HYSTERESIS CURVES



Chrome plated hole stopper



Product details

Warranty: 2 years

Max load: N/A

Doc M compliant: N/A

Suitable for wet areas: Yes

Features

- Supplied with locknut
- To suit 13mm (1/2") hole
- Easy to fit

Finish options



CP
Polished Chrome

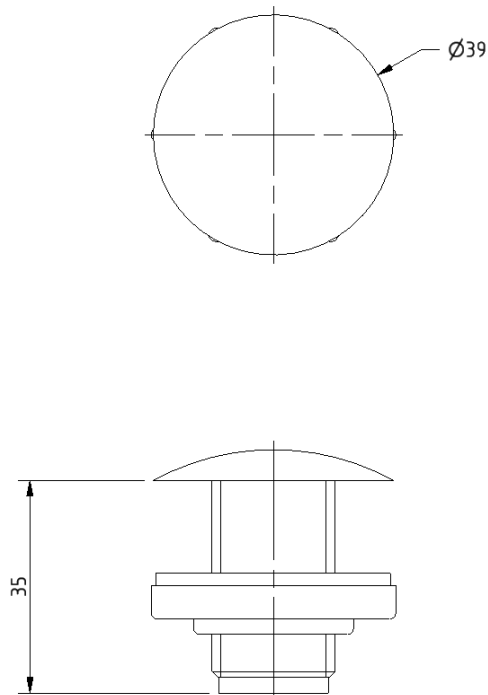
Product description

Chrome plated hole stopper

Product code

P-000239-X00X

Dimensions (mm)



Need some product advice? Contact our team of product specialists

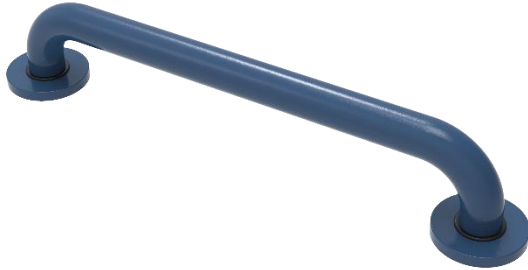
+44(0)1642 710 719 | sales@fitzroyoflondon.com

www.fitzroyoflondon.com

DAT-P-000239-X00X Doc Rev 1

Fitzroy of London may occasionally need to change specification of products and/or kit contents and reserves the right to do so. We strive to keep our documentation up to date; however, we cannot guarantee this. We accept no liability for any information given on this data sheet.

D-Bar grab rail, steel, with concealed fixings, 35mm diameter tube



Product details

Warranty: 2 years

Max load: 200 kg

Doc M compliant: Yes

Suitable for wet areas: No

Features

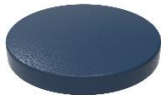
- Complies with Part M of the Building Regulations
- Robust steel construction
- Concealed Fixing Grab Rail
- Rotational lock in covers

Finish options

Powder Coated



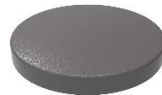
WH
White (RAL 9016)



DB
Dark Blue (RAL 5011)



DG
Dark Grey (RAL 7016)



GY
Grey (RAL 7005)

Product description

Grab rail, D-Bar, mild steel, concealed fixings, Ø35mm, 300mm length

Grab rail, D-Bar, mild steel, concealed fixings, Ø35mm, 450mm length

Grab rail, D-Bar, mild steel, concealed fixings, Ø35mm, 600mm length

Product code

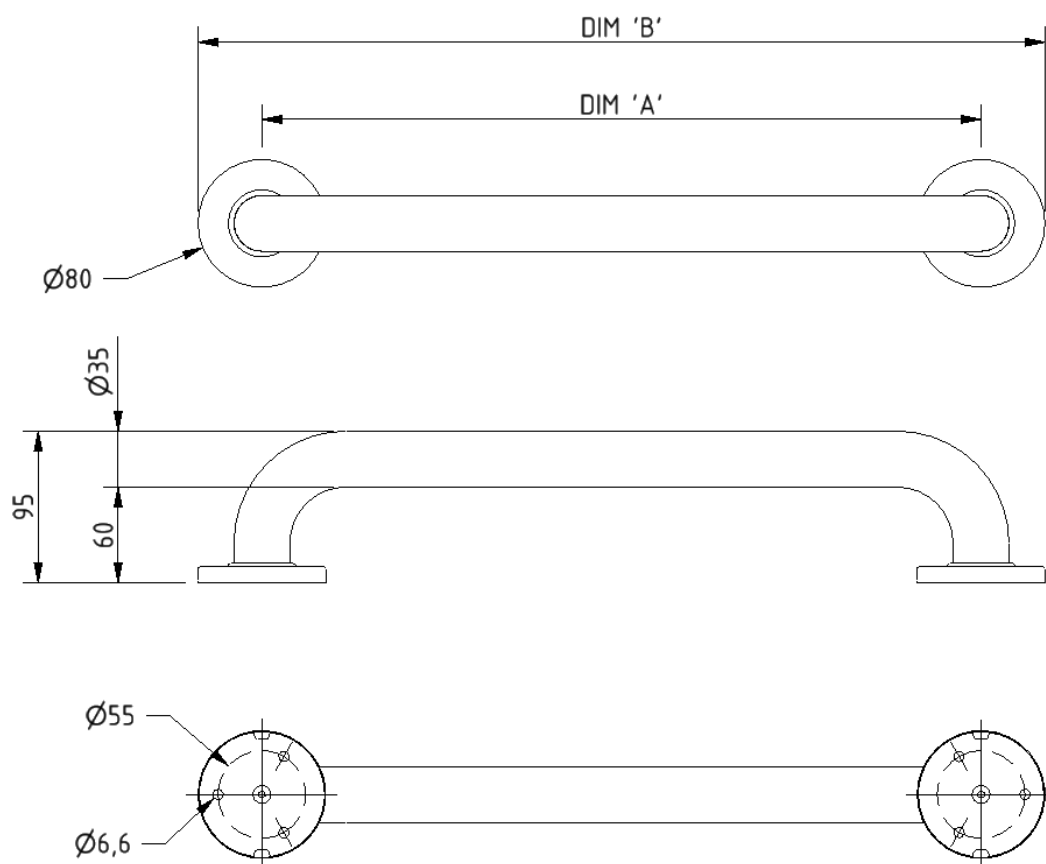
F20-0300-MSC-**

F20-0450-MSC-**

F20-0600-MSC-**

Replace ** with 2-character short code for chosen finish (Powder Coated).
e.g., F20-0300-MSC-WH

Dimensions (mm)



PRODUCT CODE	F20-0300-MSC	F20-0450-MSC	F20-0600-MSC
DIM 'A'	300	450	600
DIM 'B'	380	530	680

Lift and lock steel hinged support rail with toilet roll holder



Product details

Warranty: 2 years

Max load: 115 kg

Doc M compliant: Yes
(800mm variant only)

Suitable for wet areas: No

Features

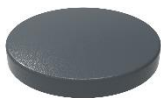
- Lift and lock folding mechanism
- Integral toilet roll holder
- Robust steel construction
- Complies with Part M of the Building Regulations (800mm variant only)

Finish options

Powder Coated



DB
Dark Blue (RAL 5011)



DG
Dark Grey (RAL 7016)



GY
Grey (RAL 7006)



WH
White (RAL 9016)

Product description

Product code

Trombone lift and lock hinged support rail, steel, toilet roll holder, 550mm

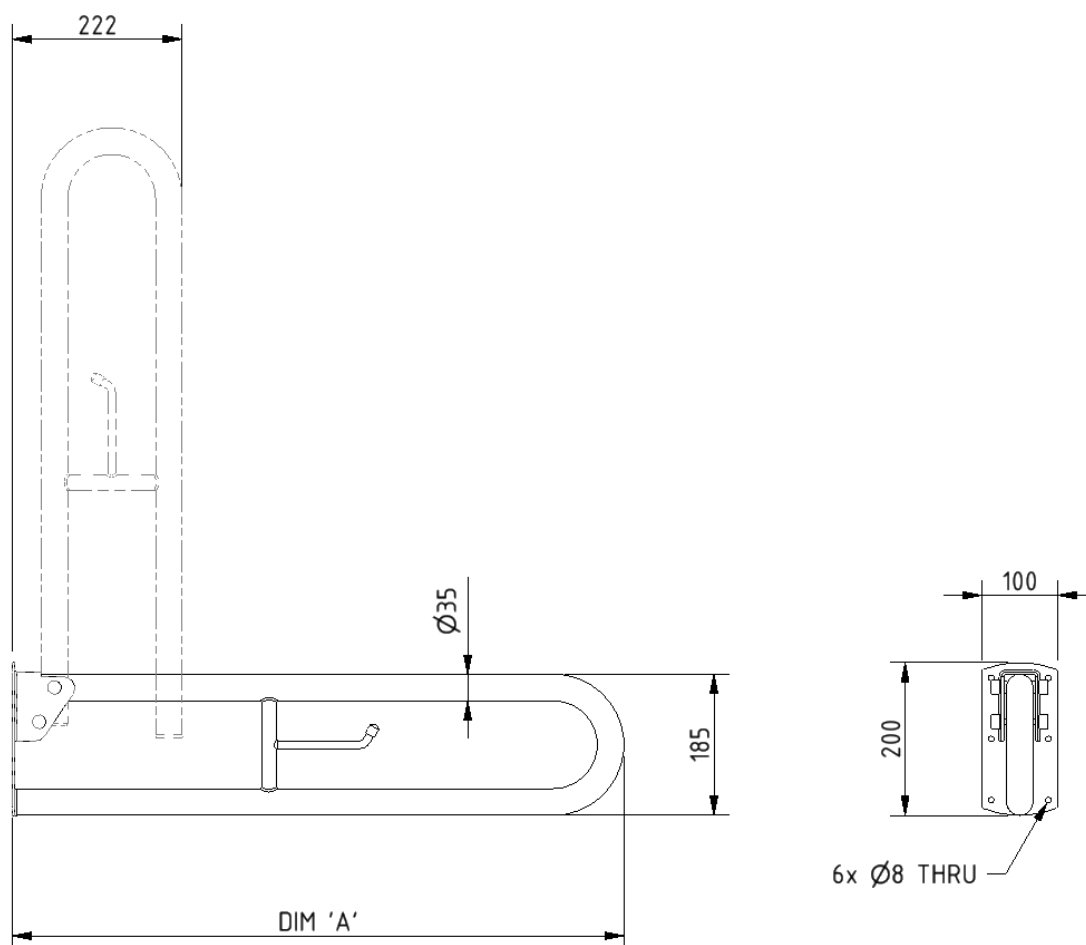
112055/**

Trombone lift and lock hinged support rail, steel, toilet roll holder, 800mm

DDGR-B/**

Replace ** with 2-character short code for chosen finish (Powder Coated).
e.g., DDGR-B/DB

Dimensions (mm)



PRODUCT CODE	112055/**	DDGR-B/**
DIM 'A'	550	800

Stainless steel back rest rail with concealed fixings and white pad



Product details

Warranty:	5 years
Max load:	N/A
Doc M compliant:	Yes
Suitable for wet areas:	Yes

Features

- Complies with Part M of the Building Regulations
- Non-corrosive stainless steel construction
- Durable wipe clean polyurethane pad
- Closed cell polyurethane construction for maximum hygiene and comfort
- Saddle clips for fixing pad to rail

Finish options

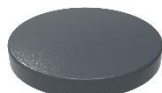
Powder Coated



WH
White (RAL 9016)



DB
Dark Blue (RAL 5011)



DG
Dark Grey (RAL 7016)



GY
Grey (RAL 7005)

Mechanical



SS
Satin Stainless Steel



SP
Polished Stainless Steel

Product description

Product code

Back rest rail with white pad, stainless steel, 220mm projection, concealed fixings

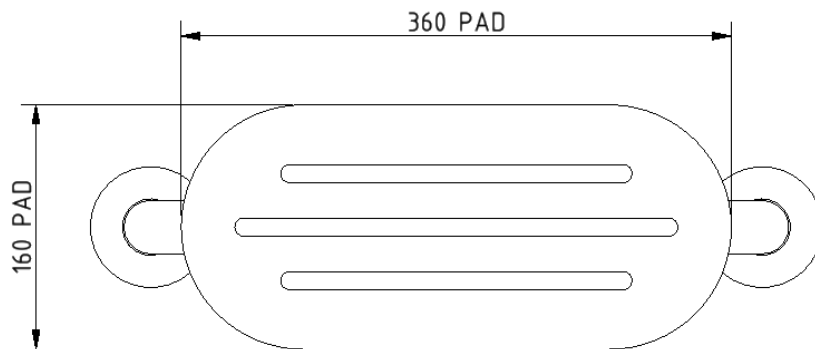
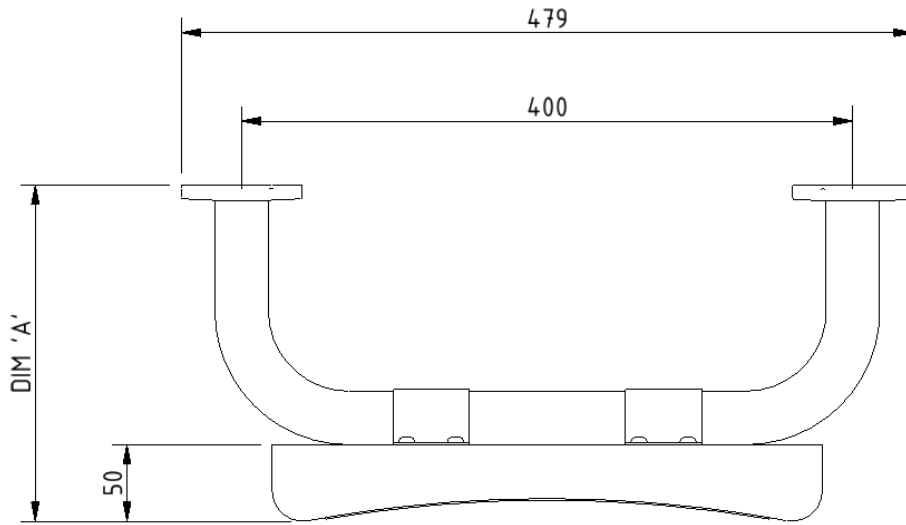
BR-220SC/**

Back rest rail with white pad, stainless steel, 270mm projection, concealed fixings

BR-270SC/**

Replace ** with 2-character short code for chosen finish (Mechanical / Powder Coated).
e.g., BR-220SC/WH

Dimensions (mm)



PRODUCT CODE	BR-220SC/**	BR-270SC/**
DIM 'A'	220	270

TMV3 inline thermostatic mixing valve



Product details

Warranty: 2 years

Max load: N/A

Doc M compliant: Yes

Suitable for wet areas: Yes

Features

- TMV3 approved & Reg 4 Certified (WRAS, NSF, Kiwa, etc.)
- Complies with Part M of the Building Regulations
- Building Regulations Part G compliant
- Highly resistant to scaling
- Anti-tamper proof head
- Complies with HTM04-01 D08
- TMV2 approved & complies with BS EN 1111 & BS EN 1287:2017
- Integral check valves & strainers

Finish options



CP
Polished Chrome

Product description

TMV3 inline thermostatic mixing valve - 15mm

Product code

BPLTMV

Dimensions (mm)

