

Doc M changing room pack with steel concealed fixing grab rails



Product details

Warranty: See individual products

Max load: See individual products

Doc M compliant: Yes

Suitable for wet areas: No

Features

- Complies with Part M of the Building Regulations
- Concealed fixing grab rails
- All components are available as individual products
- Simple one box solution

Finish options

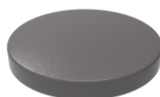
Powder Coated



DB
Dark Blue (RAL 5011)



DG
Dark Grey (RAL 7016)



GY
Grey (RAL 7005)



WH
White (RAL 9016)

Product description

Doc M changing room pack, steel, concealed fixings

Product code

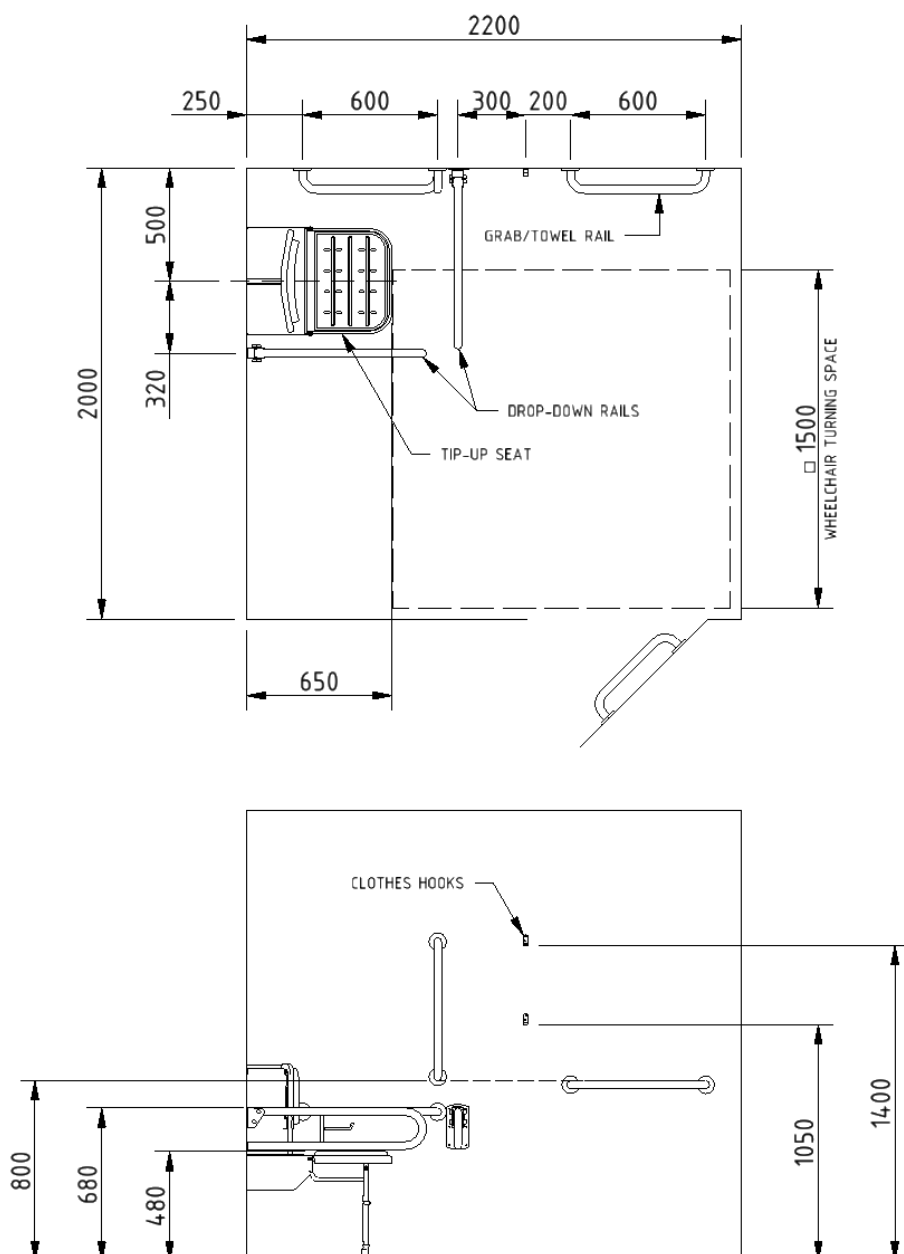
230401/**

Replace ** with 2-character short code for chosen finish (Powder Coated).
e.g., 230401/DB

Pack contents

- 1 x Doc M shower seat
- 3 x 600mm coated steel grab rails with concealed fixings
- 1 x 450mm coated steel grab rail with concealed fixings
- 2 x 800mm coated steel hinged support rails with integral toilet roll holder
- 2 x Single robe hooks

Dimensions (mm)



Wall mounted padded Doc M shower seat



Product details

Warranty: 5 years

Max load: 250 kg

Doc M compliant: Yes

Suitable for wet areas: Yes

Features

- Complies with Part M of the Building Regulations
- Extended projection to allow easier side transfer from wheelchair
- Aluminium and stainless frame
- Durable clip on plastic seat
- Adjustable height
- Drainage holes for easy-drain
- Back support for optimum comfort
- Closed cell polyurethane pad for maximum hygiene and comfort
- Foldable design

Finish options



DB
Dark Blue (RAL 5011)



GY
Grey (RAL 7005)

Product description

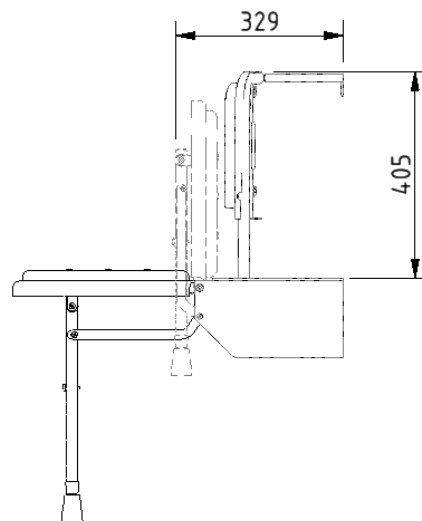
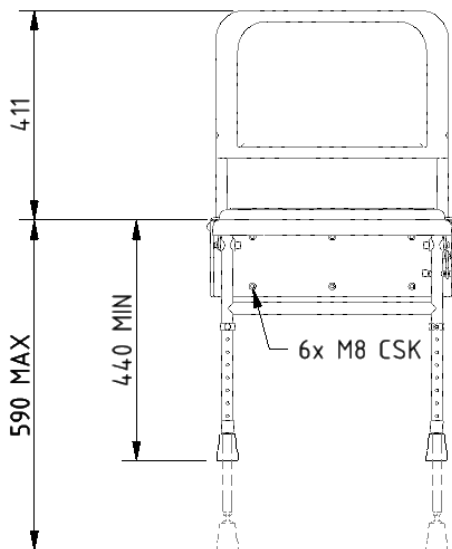
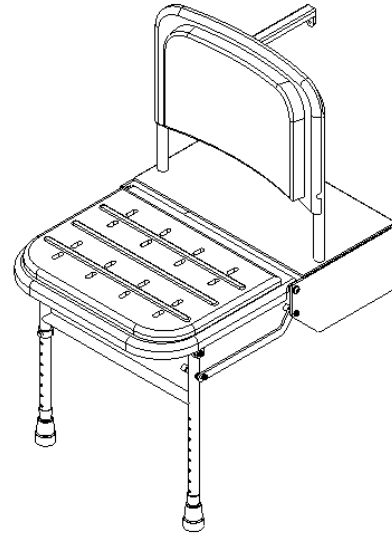
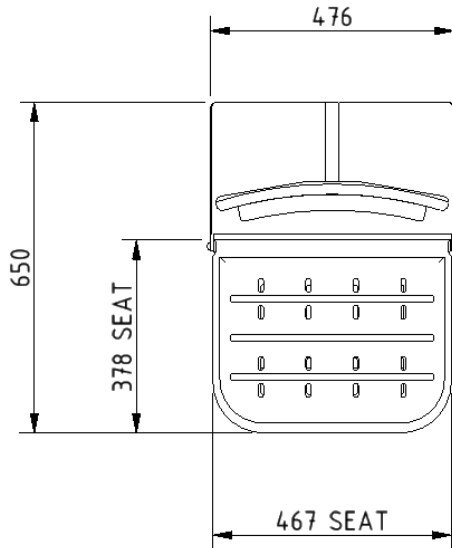
Doc M shower seat, 650mm projection, polished frame

Product code

SB-085/**

Replace ** with 2-character short code for chosen finish.
e.g., SB-085/DB

Dimensions (mm)



D-Bar grab rail, steel, with concealed fixings, 35mm diameter tube



Product details

Warranty: 2 years

Max load: 200 kg

Doc M compliant: Yes

Suitable for wet areas: No

Features

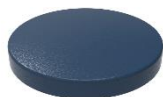
- Complies with Part M of the Building Regulations
- Robust steel construction
- Concealed Fixing Grab Rail

Finish options

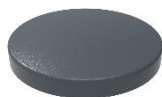
Powder Coated



WH
White (RAL 9016)



DB
Dark Blue (RAL 5011)



DG
Dark Grey (RAL 7016)



GY
Grey (RAL 7005)

Product description

Product code

Round flange grab rail, steel, concealed fixings, 35mm diameter, 300mm

G1235C/**

Round flange grab rail, steel, concealed fixings, 35mm diameter, 450mm

G1835C/**

Round flange grab rail, steel, concealed fixings, 35mm diameter, 600mm

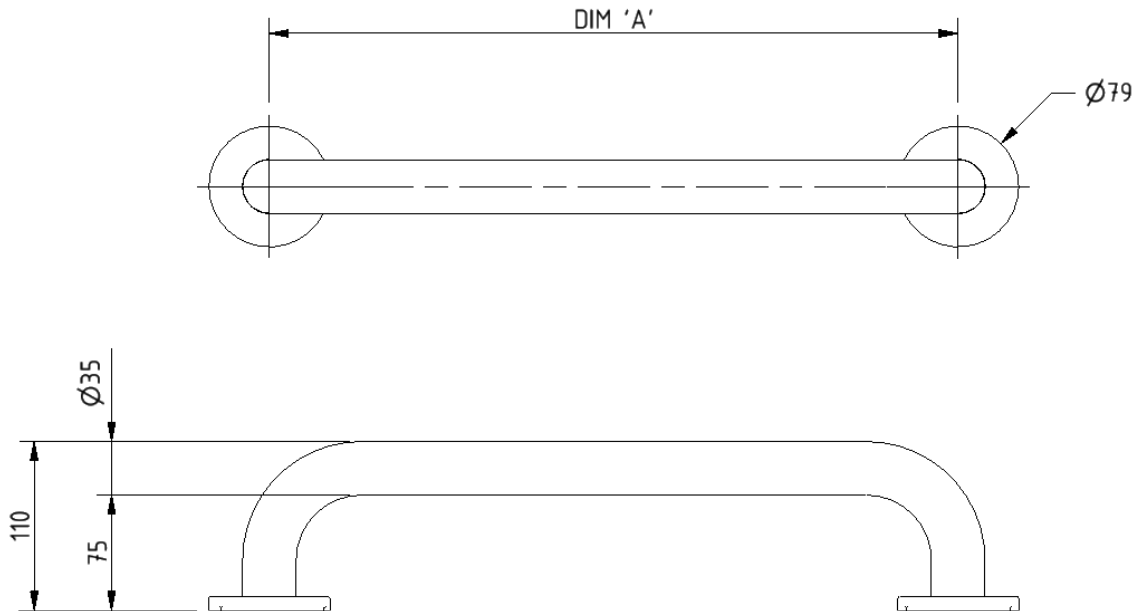
G2435C/**

Round flange grab rail, steel, concealed fixings, 35mm diameter, 900mm

G3635C/**

Replace ** with 2-character short code for chosen finish (Powder Coated).
e.g., G1235C/WH

Dimensions (mm)



PRODUCT CODE	G1235C/**	G1835C/**	G2435C/**	G3635C/**
DIM 'A'	300	450	600	900

Lift and lock steel hinged support rail with toilet roll holder



Product details

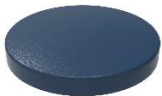
Warranty:	2 years
Max load:	115 kg
Doc M compliant:	Yes (800mm variant only)
Suitable for wet areas:	No

Features

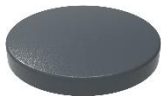
- Lift and lock folding mechanism
- Integral toilet roll holder
- Robust steel construction
- Complies with Part M of the Building Regulations (800mm variant only)

Finish options

Powder Coated



DB
Dark Blue (RAL 5011)



DG
Dark Grey (RAL 7016)



GY
Grey (RAL 7006)



WH
White (RAL 9016)

Product description

Product code

Trombone lift and lock hinged support rail, steel, toilet roll holder, 550mm

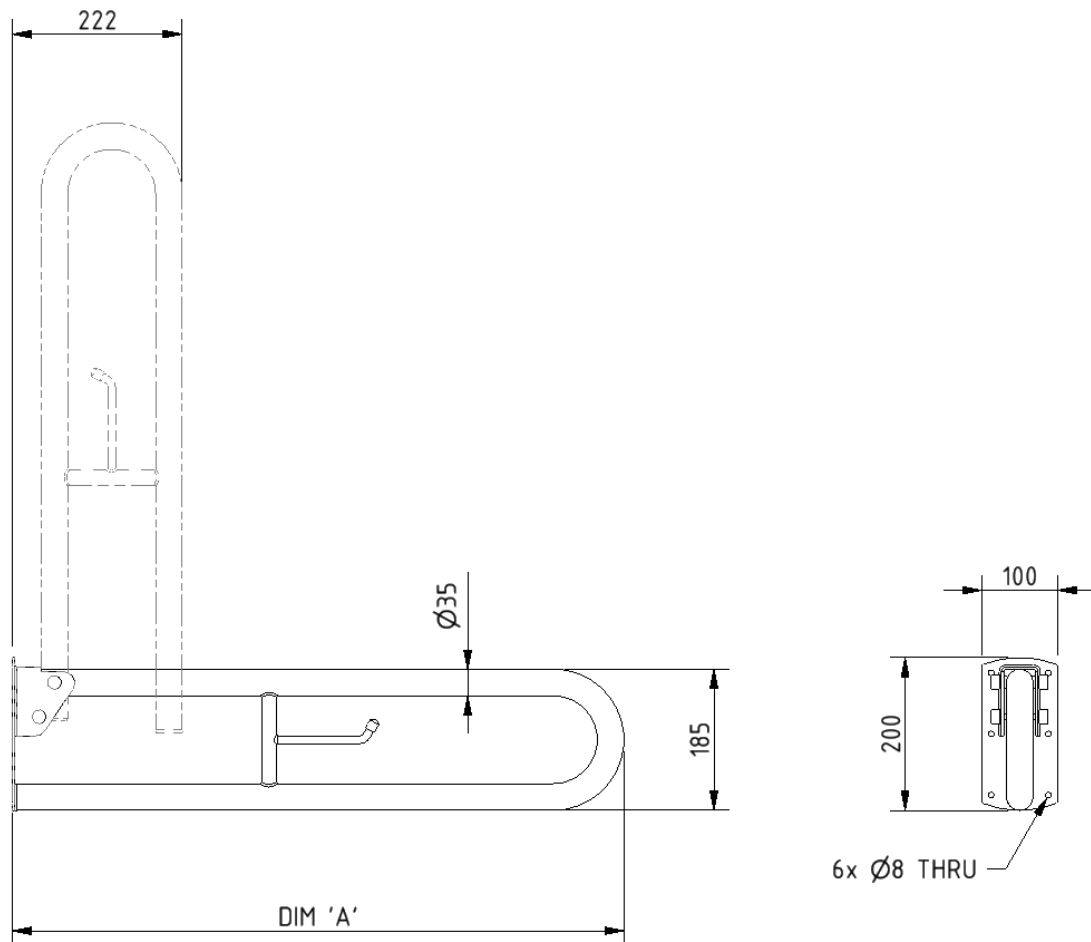
112055/**

Trombone lift and lock hinged support rail, steel, toilet roll holder, 800mm

DDGR-B/**

Replace ** with 2-character short code for chosen finish (Powder Coated).
e.g., DDGR-B/DB

Dimensions (mm)



PRODUCT CODE	112055/**	DDGR-B/**
DIM 'A'	550	800

Single aluminium robe hook



Product details

Warranty: 2 years

Max load: N/A

Doc M compliant: Yes

Suitable for wet areas: Yes

Features

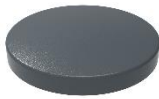
- Aluminium construction
- Colour options available for visually impaired
- Complies with Part M of the Building Regulations

Finish options

Powder Coated



DB
Dark Blue (RAL 5011)



DG
Dark Grey (RAL 7016)



GY
Grey (RAL 7005)



MB
Matt Black (RAL 9005)



WH
White (RAL 9016)

Product description

Single robe hook, aluminium

Product code

141701/**

Replace ** with 2-character short code for chosen finish (Powder Coated).
e.g., 141701/DB

Dimensions (mm)

