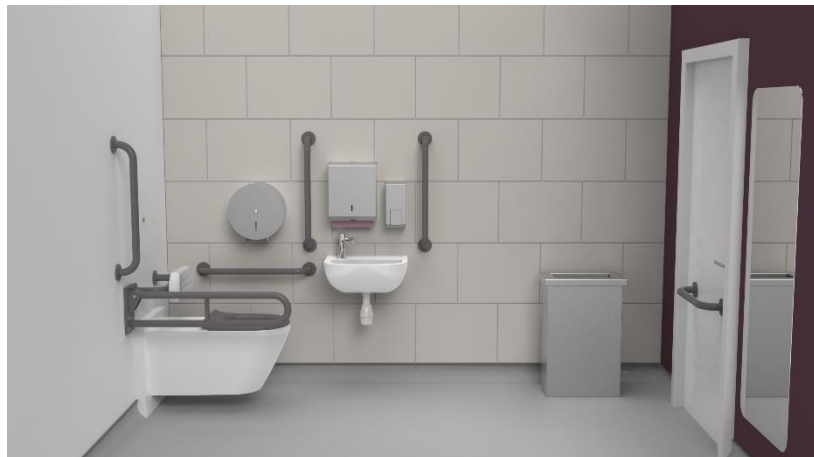


Infrared premium rimless wall hung Doc M toilet pack



Product details

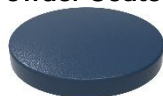
Warranty:	See individual products
Max load:	See individual products
Doc M compliant:	Yes
Suitable for wet areas:	Yes

Features

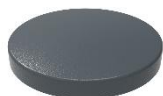
- Premium rimless design
- Hygienic touch-free operation
- Complies with Part M of the Building Regulations
- Tap, flush valve and inlet valve Reg 4 Certified (WRAS, NSF, Kiwa, etc.)
- Concealed fixing stainless steel grab rails and hinged rail
- Simple one box solution

Finish options

Powder Coated



DB
Dark Blue (RAL 5011)



DG
Dark Grey (RAL 7016)



GY
Grey (RAL 7006)



WH
White (RAL 9016)

Mechanical



SP
Polished Stainless Steel



SS
Satin Stainless Steel

Product description

Product code

Infrared premium rimless wall hung Doc M toilet pack, left handed

NY02-DM-43111-**

Infrared premium rimless wall hung Doc M toilet pack, right handed

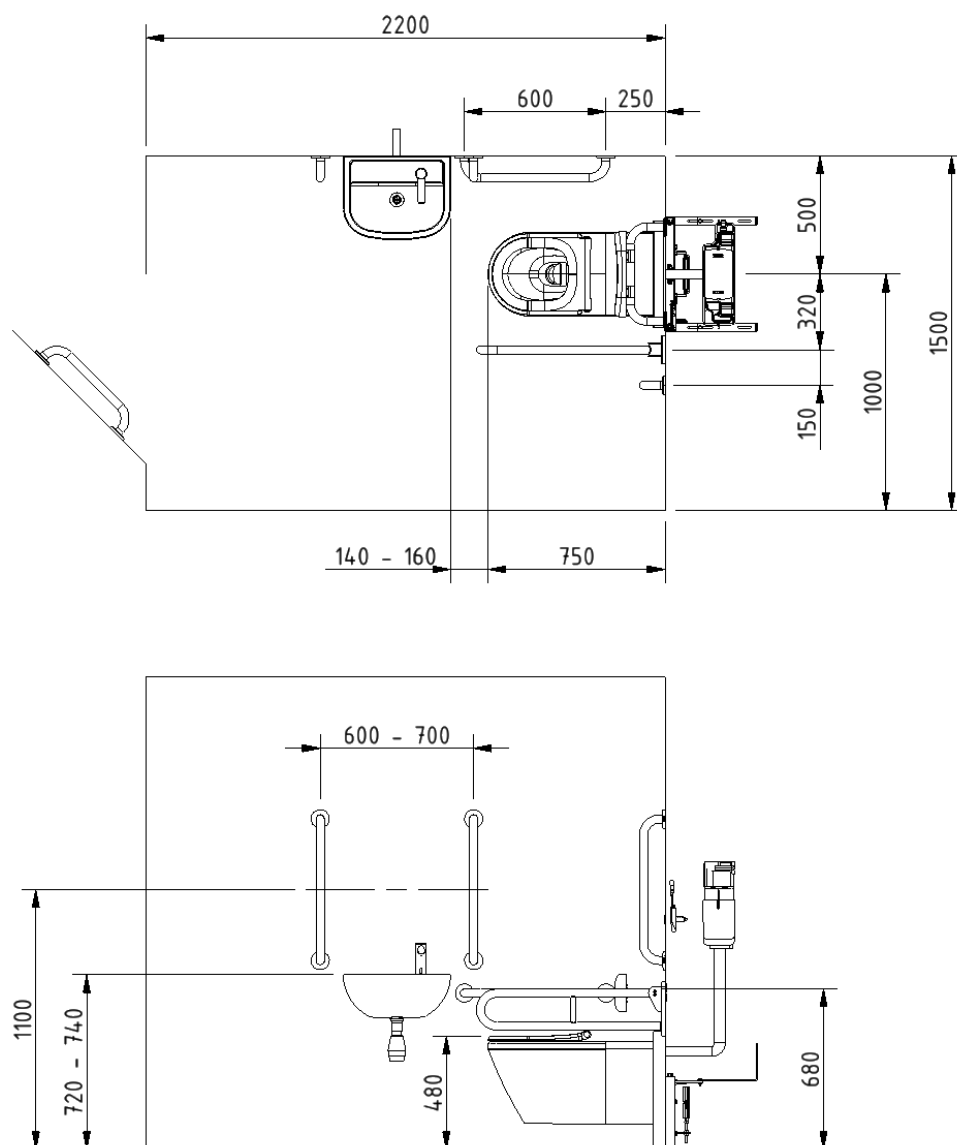
NY02-DM-43112-**

Replace ** with 2-character short code for chosen finish.
e.g., NY02-DM-43111-DB

Pack contents

- 4 x 600mm stainless steel grab rails with concealed fixings
- 1 x 450mm stainless steel grab rail with concealed fixings
- 1 x 800mm stainless steel hinged support rail with concealed fixings
- 1 x 220mm stainless steel back rest rail and pad with concealed fixing
- 1 x Wall hung premium rimless Doc M pan
- 1 x Floor mounting frame for wall hung pan
- 1 x Infrared concealed cistern with fittings, flush pipe, and mains powered sensor
- 1 x Ring only toilet seat with soft close hinge
- 1 x Left or right handed 1 tap hole basin
- 1 x Contemporary mains powered infrared tap
- 1 x TMV3 Valve
- 1 x Basin waste

Dimensions (mm)



Note: Spacing box between pan and wall is not provided by Fitzroy of London, this is required to achieve the 750mm dimension.

Fitzroy of London may occasionally need to change specification of products and/or kit contents and reserves the right to do so. We strive to keep our documentation up to date; however, we cannot guarantee this. We accept no liability for any information given on this data sheet.

Premium rimless wall hung Doc M pan



Product details

Warranty:	5 years
Max load:	N/A
Doc M compliant:	Yes
Suitable for wet areas:	Yes

Features

- Rimless design for ease of cleaning
- Extended projection to aid compliance with Part M of the Building Regulations
- UKCA and CE compliant

For 750mm projection, wall should be built out by 50mm

Finish options



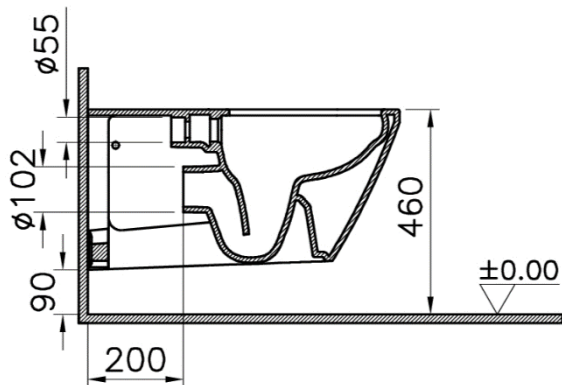
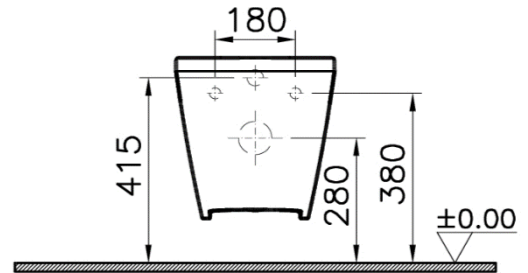
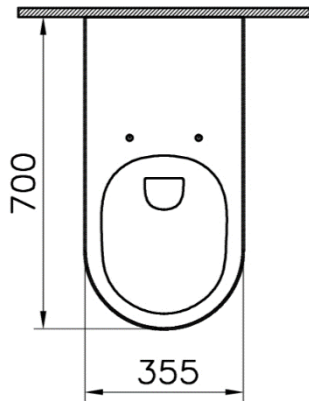
Product description

Premium rimless wall hung Doc M pan

Product code

NY03-SW-43000-WH

Dimensions (mm)



Infrared concealed cistern and fittings



Product details

Warranty:	5 years
Max load:	N/A
Doc M compliant:	Yes
Suitable for wet areas:	Yes

Features

- Flush valve and inlet valve Reg 4 Certified (WRAS, NSF, Kiwa, etc.)
- Supplied assembled for quick and easy installation
- Discreet Ø40mm IR sensor
- Sensor can be installed up to 250mm from cistern
- LED flush indication
- Front and top access panels
- Internal overflow warning
- Supports BREEAM.
- 6 litre mono flush
- Side inlet

Finish options

Electroplated



CP
Polished Chrome

Mechanical



SS
Satin Stainless Steel

Powder Coated



MB
Matt Black (RAL 9005)

Product description

Product code

Infrared concealed cistern, with fittings and sensor, mains powered

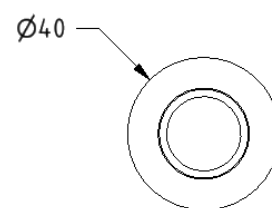
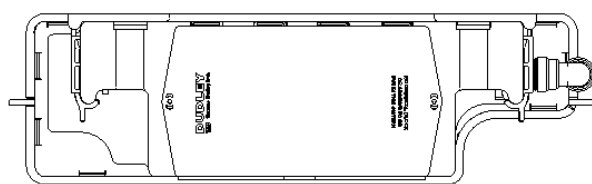
NY03-CISTIR01-**

Replace ** with 2-character short code for chosen finish (Mechanical / Electroplated / Powder Coated).
e.g., NY03-CISTIR01-CP

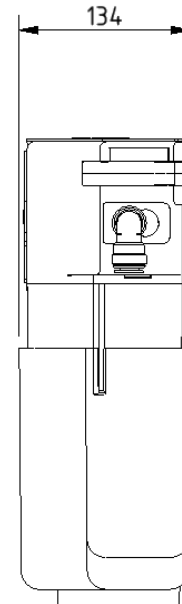
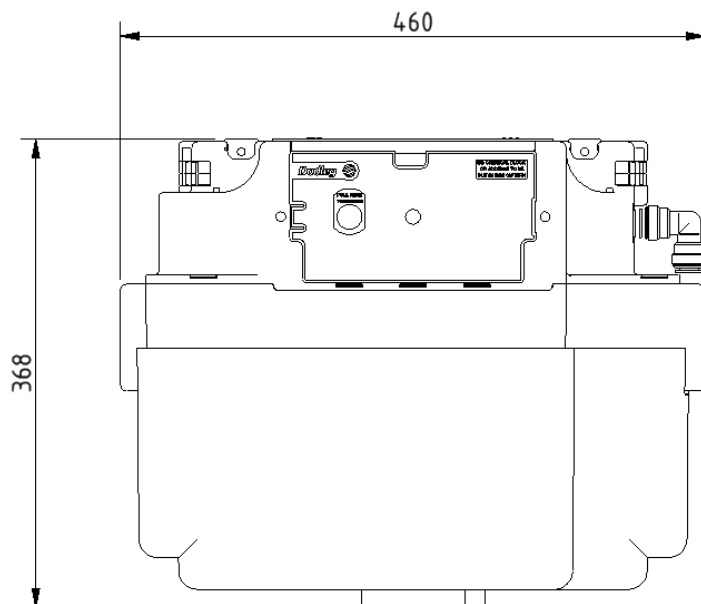
Specification

Operating voltage:	6V DC
Mains supply:	230V AC 50Hz
Sensor cable length:	400mm
Sensor activation range:	Up to 50mm
Ingress protection:	IP44
Maximum wall thickness:	Up to 45mm

Dimensions (mm)



SENSOR
SCALE 1 : 2



Soft close ring only toilet seat



Product details

Warranty: 5 years

Max load: N/A

Doc M compliant: Yes

Suitable for wet areas: Yes

Features

- Complies with Part M of the Building Regulations
- Fits premium rimless wall hung pan
- Soft close hinge

Finish options



WH
White (RAL 9016)

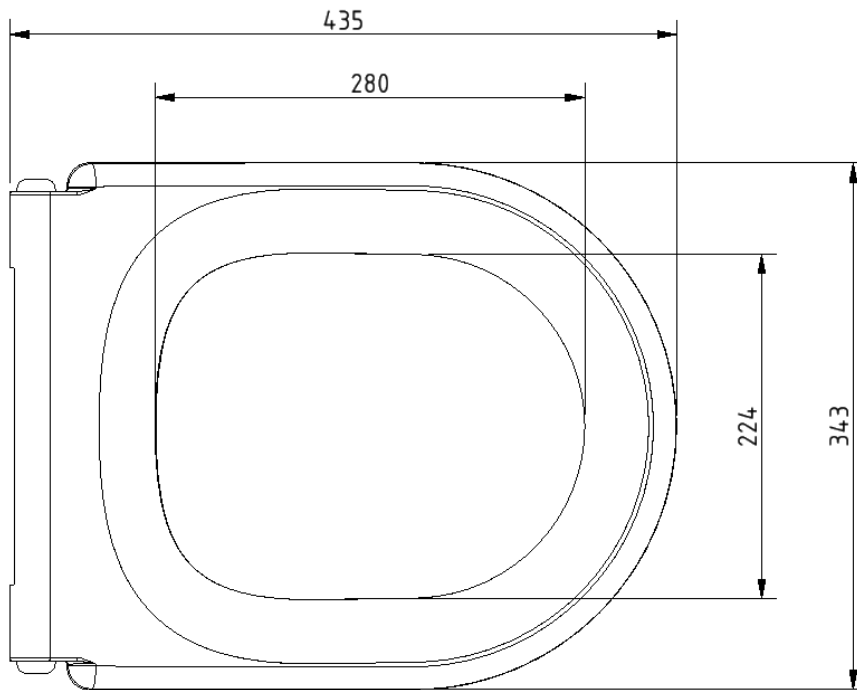
Product description

Toilet seat, ring only, soft close, with hinge, white (RAL 9016)

Product code

NY03-SEAT01-WH

Dimensions (mm)



Low frame unit for wall hung pan



Product details

Warranty: 5 years

Max load: 400 kg

Doc M compliant: Yes

Suitable for wet areas: Yes

Features

- Comes with flush pipe and WC pan connector clamps
- Adjustable legs for WC pan height fixing flexibility
- Wall and floor fixing brackets can be fixed through 180 degrees and 360 degrees to simplify installation
- Strong steel square hollow construction
- Load tested to 4kN for compliance with BS EN 997

Finish options

- As standard:**
- Blue powder coated
 - Zinc plated wall and floor brackets

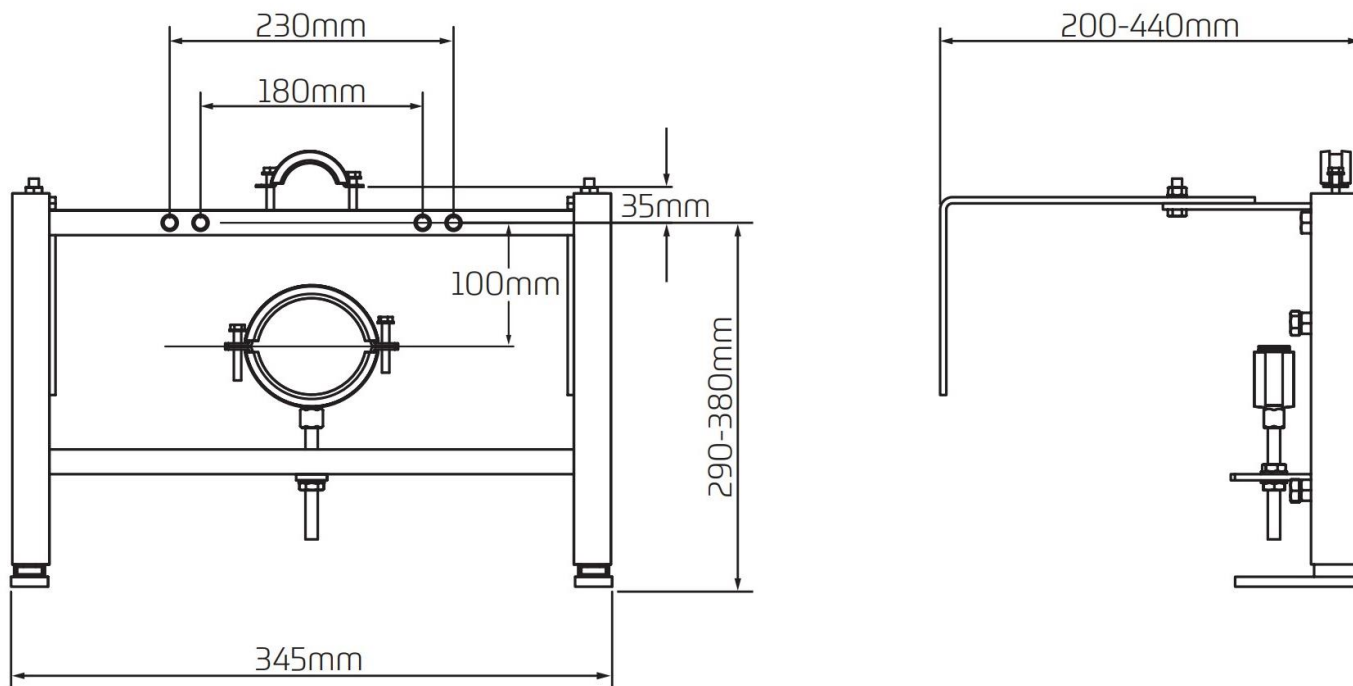
Product description

Low frame unit for wall hung pan

Product code

B-WALLHUNGFRAME

Dimensions (mm)



*For distances between 160-200mm the brackets will need to be reduced in length by cutting.

Plastic flush pipe



Product details

Warranty: 2 years

Max load: N/A

Doc M compliant: Yes

Suitable for wet areas: Yes

Features

- Manufactured with a 38mm outside diameter
- One-piece 90° swept bend
- High quality PVC construction

Finish options



WH
White

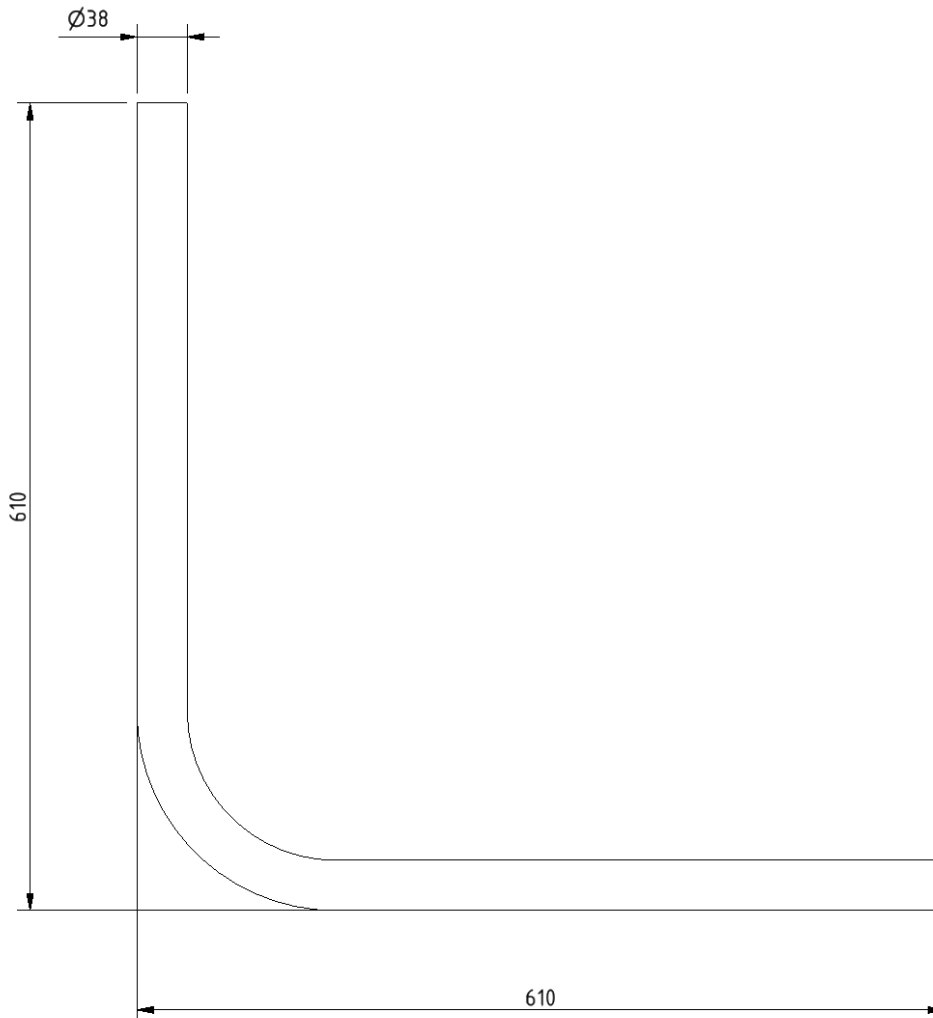
Product description

Flush pipe, 610mm x 610mm x 38mm, white

Product code

CP-OMI-1245

Dimensions (mm)



Premium Doc M basin



Product details

Warranty:	Lifetime
Max load:	N/A
Doc M compliant:	Yes
Suitable for wet areas:	Yes

Features

- Multiple tap hole configurations available removing the need for blanking caps
- Complies with Part M of the Building Regulations
- No overflow

Does **NOT** come with wall fixings (P-000247-X00X)

Finish options



WH
White

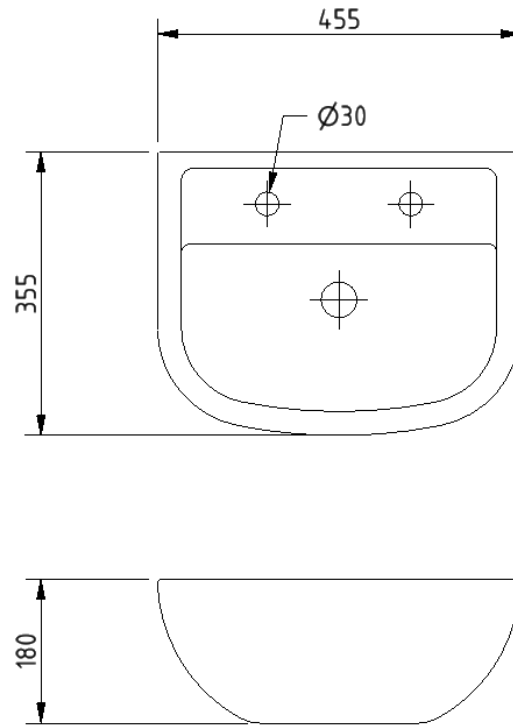
Product description

Premium Doc M basin, two tap holes, no overflow, white
 Premium Doc M basin, left handed tap hole, no overflow, white
 Premium Doc M basin, right handed tap hole, no overflow, white
 Premium Doc M basin, central tap hole, no overflow, white

Product code

NY02-SW-00100-WH
 NY02-SW-00101-WH
 NY02-SW-00102-WH
 NY02-SW-00103-WH

Dimensions (mm)



FOR TAP HOLE POSITION DIMENSIONS SEE PRODUCT SPECIFIC MARKETING DRAWING

Contemporary mains powered infrared tap



Product details

Warranty:	5 years
Max load:	N/A
Doc M compliant:	Yes
Suitable for wet areas:	Yes

Features

- Complies with Part M of the Building Regulations
- Reg 4 Certified (WRAS, NSF, Kiwa, etc.)
- Must be installed with a thermostatic mixing valve for premixed water (part code: BPLTMV)
- Hygienic touch-free operation
- Shuts off when hand is removed from in front of the sensor
- Water delivery automatically stops after 90 seconds (can be adjusted)

Finish options

Electroplated



CP
Polished Chrome

Mechanical



SS
Satin Stainless Steel

Powder Coated



MB
Matt Black (RAL 9005)

Product description

Contemporary infrared tap, with fittings, mains powered

Product code

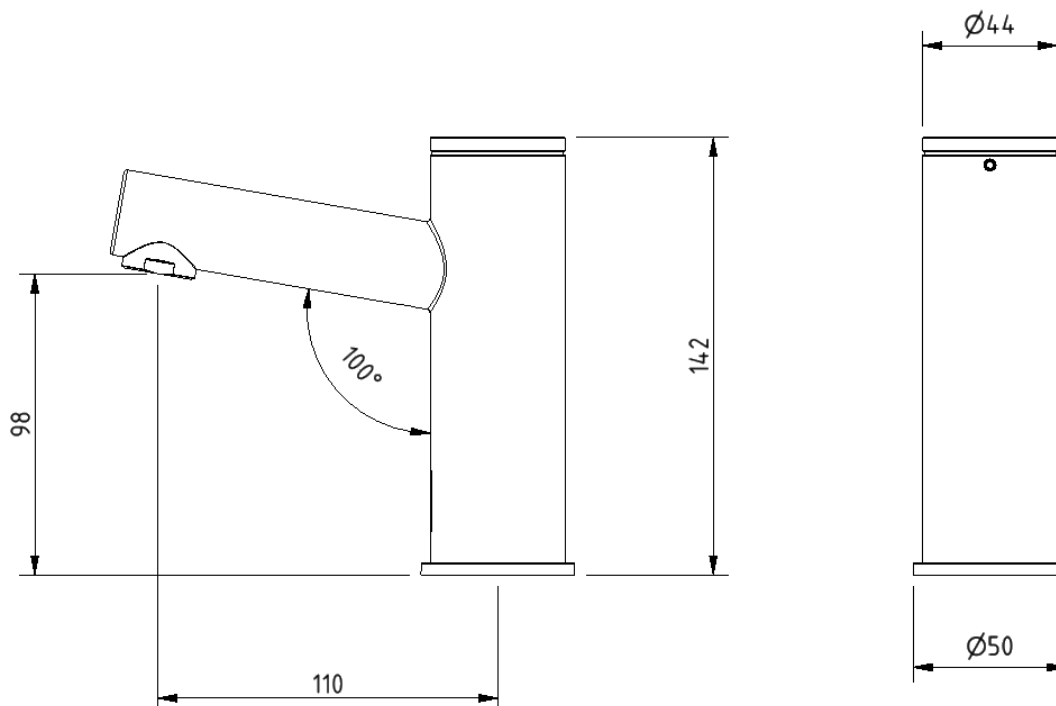
NY03-TAPIR01-**

Replace ** with 2-character short code for chosen finish.
e.g., NY03-TAPIR01-CP

Specification

Operating voltage:	9V DC
Mains supply:	230V AC 50Hz
Maximum dynamic pressure:	0.5 bar MIN, 8 bar MAX
Maximum hot water supply temperature:	70 degrees Celsius
Sensor range:	80 - 300mm (220mm preset)
Connection:	½" BSP
Flow rate:	6 litre per minute

Dimensions (mm)



Basin waste with stainless steel grid, no plug



Product details

Warranty: 2 years

Max load: N/A

Doc M compliant: Yes

Suitable for wet areas: Yes

Features

- Slotted type for use for basins with and without overflow
- Manufactured from high quality materials
- Quick and simple installation

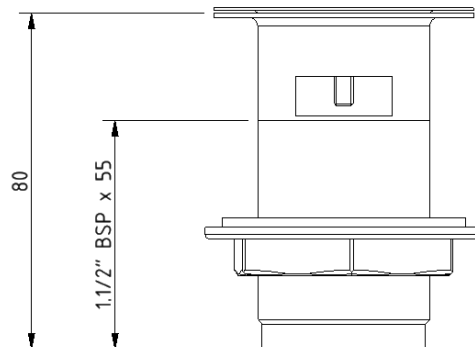
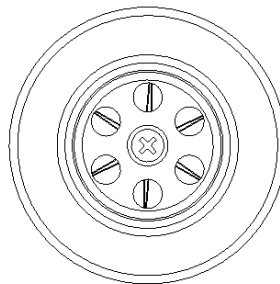
Product description

Basin waste with stainless steel grid, no plug

Product code

P-000241-X00X

Dimensions (mm)



Fitzroy of London may occasionally need to change specification of products and/or kit contents and reserves the right to do so. We strive to keep our documentation up to date; however, we cannot guarantee this. We accept no liability for any information given on this data sheet.

Need some product advice? Contact our team of product specialists
+44(0)1642 710 719 | sales@fitzroyoflondon.com
www.fitzroyoflondon.com

Stainless steel grab rail with concealed fixings, 35mm diameter tube



Product details

Warranty:	5 Years
Max load:	185 kg
Doc M compliant:	Yes
Suitable for wet areas:	Yes

Features

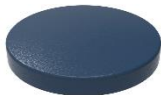
- Stainless steel construction
- Durable powder coated finish
- Concealed fixing

Finish options

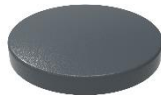
Powder coated



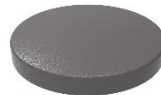
WH
White (RAL 9016)



DB
Dark Blue (RAL 5011)



DG
Dark Grey (RAL 7016)



GY
Grey (RAL 7005)

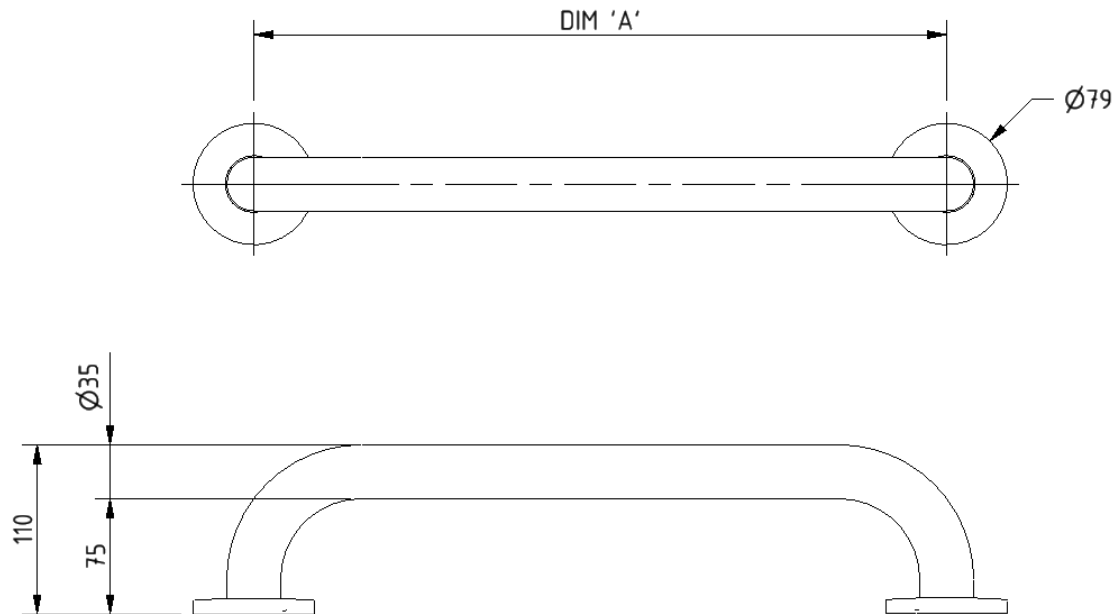
Product description

Product code

Grab rail, stainless steel, concealed fixings, 35mm diameter, 300mm	210130/**
Grab rail, stainless steel, concealed fixings, 35mm diameter, 450mm	210145/**
Grab rail, stainless steel, concealed fixings, 35mm diameter, 600mm	210160/**
Grab rail, stainless steel, concealed fixings, 35mm diameter, 900mm	210190/**

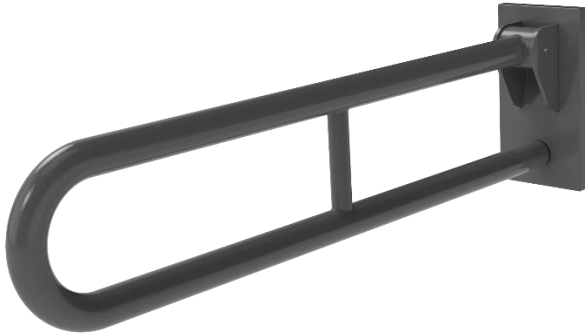
Replace ** with 2-character short code for chosen finish.
e.g., 210130/WH

Dimensions (mm)



PRODUCT CODE	210130/**	210145/**	210160/**	210190/**
DIM 'A'	300	450	600	900

Stainless steel friction hinged support rail with concealed fixings, 800mm



Product details

Warranty: 5 years

Max load: 120 kg

Doc M compliant: Yes

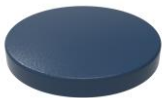
Suitable for wet areas: Yes

Features

- Complies with Part M of the Building Regulations
- Premium friction folding mechanism
- Stainless steel construction
- Concealed wall fixings

Finish options

Powder Coated



DB
Dark Blue (RAL 5011)



DG
Dark Grey (RAL 7016)



GY
Grey (RAL 7005)



WH
White (RAL 9016)

Mechanical



SP
Polished Stainless Steel



SS
Satin Stainless Steel

Product description

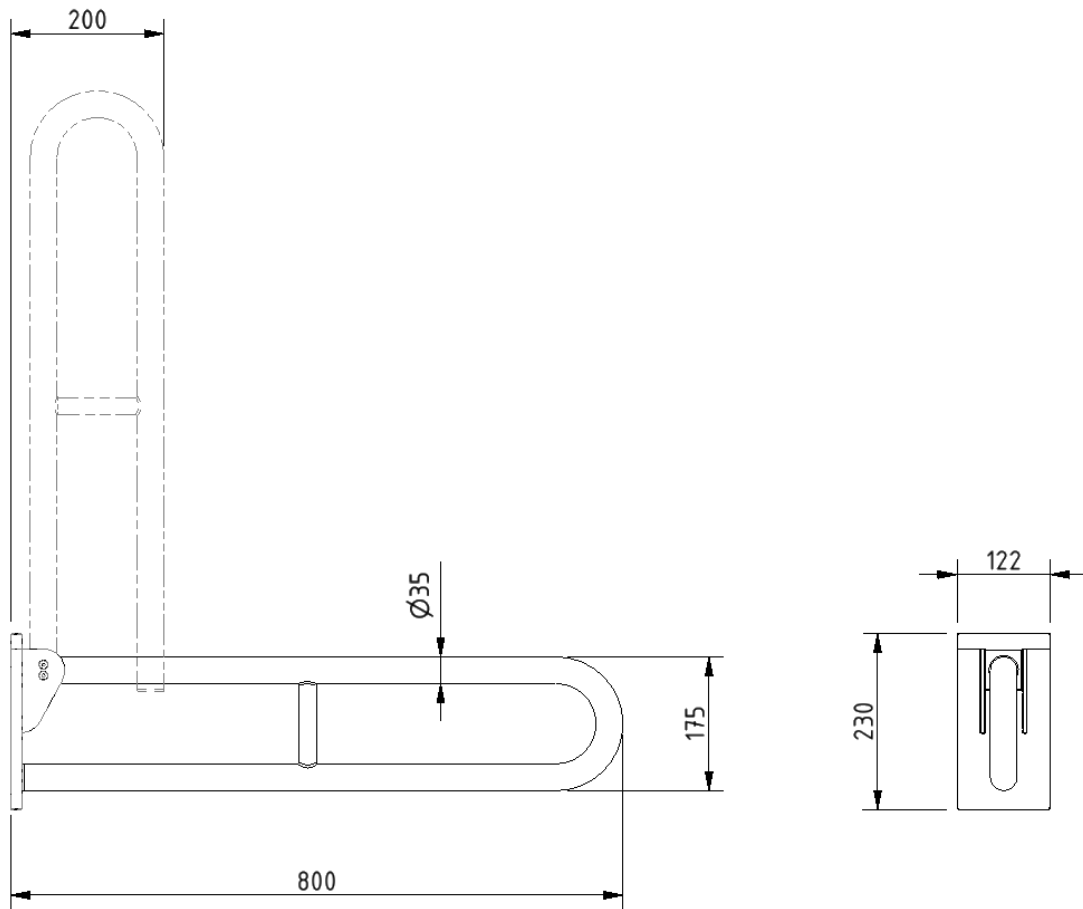
Friction hinged rail, stainless steel, concealed fixing, 800mm

Product code

105SC-**

Replace ** with 2-character short code for chosen finish (Powder Coated / Mechanical).
e.g., 105SC/DB

Dimensions (mm)



Stainless steel back rest rail with concealed fixings and white pad



Product details

Warranty:	5 years
Max load:	N/A
Doc M compliant:	Yes
Suitable for wet areas:	Yes

Features

- Complies with Part M of the Building Regulations
- Non-corrosive stainless steel construction
- Durable wipe clean polyurethane pad
- Closed cell polyurethane construction for maximum hygiene and comfort
- Saddle clips for fixing pad to rail

Finish options

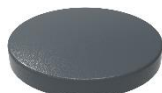
Powder Coated



WH
White (RAL 9016)



DB
Dark Blue (RAL 5011)



DG
Dark Grey (RAL 7016)



GY
Grey (RAL 7005)

Mechanical



SS
Satin Stainless Steel



SP
Polished Stainless Steel

Product description

Product code

Back rest rail with white pad, stainless steel, 220mm projection, concealed fixings

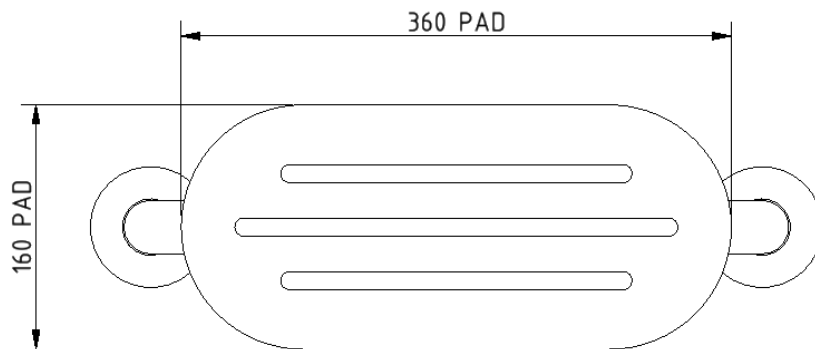
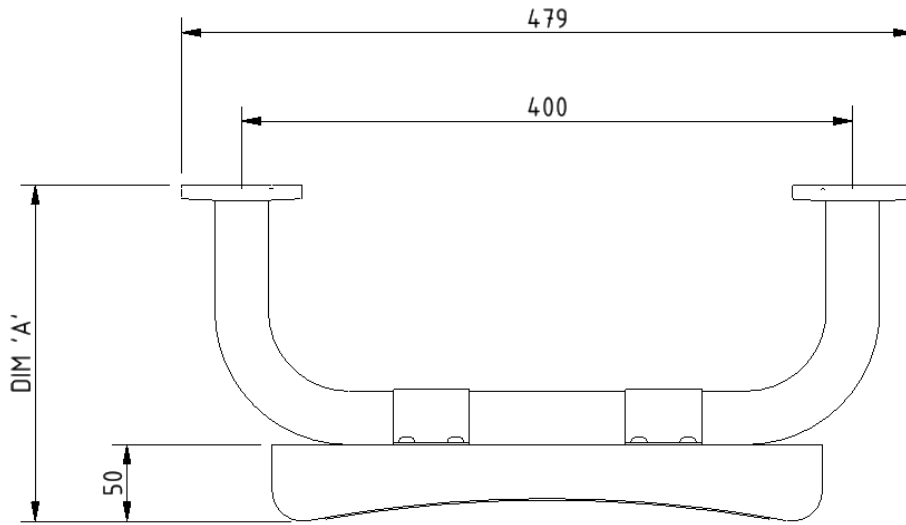
BR-220SC/**

Back rest rail with white pad, stainless steel, 270mm projection, concealed fixings

BR-270SC/**

Replace ** with 2-character short code for chosen finish (Mechanical / Powder Coated).
e.g., BR-220SC/WH

Dimensions (mm)



PRODUCT CODE	BR-220SC/**	BR-270SC/**
DIM 'A'	220	270

TMV3 inline thermostatic mixing valve



Product details

Warranty: 2 years

Max load: N/A

Doc M compliant: Yes

Suitable for wet areas: Yes

Features

- TMV3 approved & Reg 4 Certified (WRAS, NSF, Kiwa, etc.)
- Complies with Part M of the Building Regulations
- Building Regulations Part G compliant
- Highly resistant to scaling
- Anti-tamper proof head
- Complies with HTM04-01 D08
- TMV2 approved & complies with BS EN 1111 & BS EN 1287:2017
- Integral check valves & strainers

Finish options



CP
Polished Chrome

Product description

TMV3 inline thermostatic mixing valve - 15mm

Product code

BPLTMV

