

Close coupled Doc M toilet pack with stainless steel concealed fixing luxury grab rails



Product details

Warranty: See individual products

Max load: See individual products

Doc M compliant: Yes

Suitable for wet areas: Yes

Features

- Complies with Part M of the Building Regulations
- Inlet valve and syphon Reg 4 Certified (WRAS, NSF, Kiwa, etc.)
- Concealed fixing stainless steel grab rails
- Universal – suitable for left or right-handed transfer
- Simple one box solution

Finish options

Mechanical



SP
Polished Stainless Steel



SS
Satin Stainless Steel

Powder Coated



MB
Matt Black (RAL 9005)

Product description

Luxury close coupled Doc M toilet pack, seat & lid, TMV3 valve

Product code

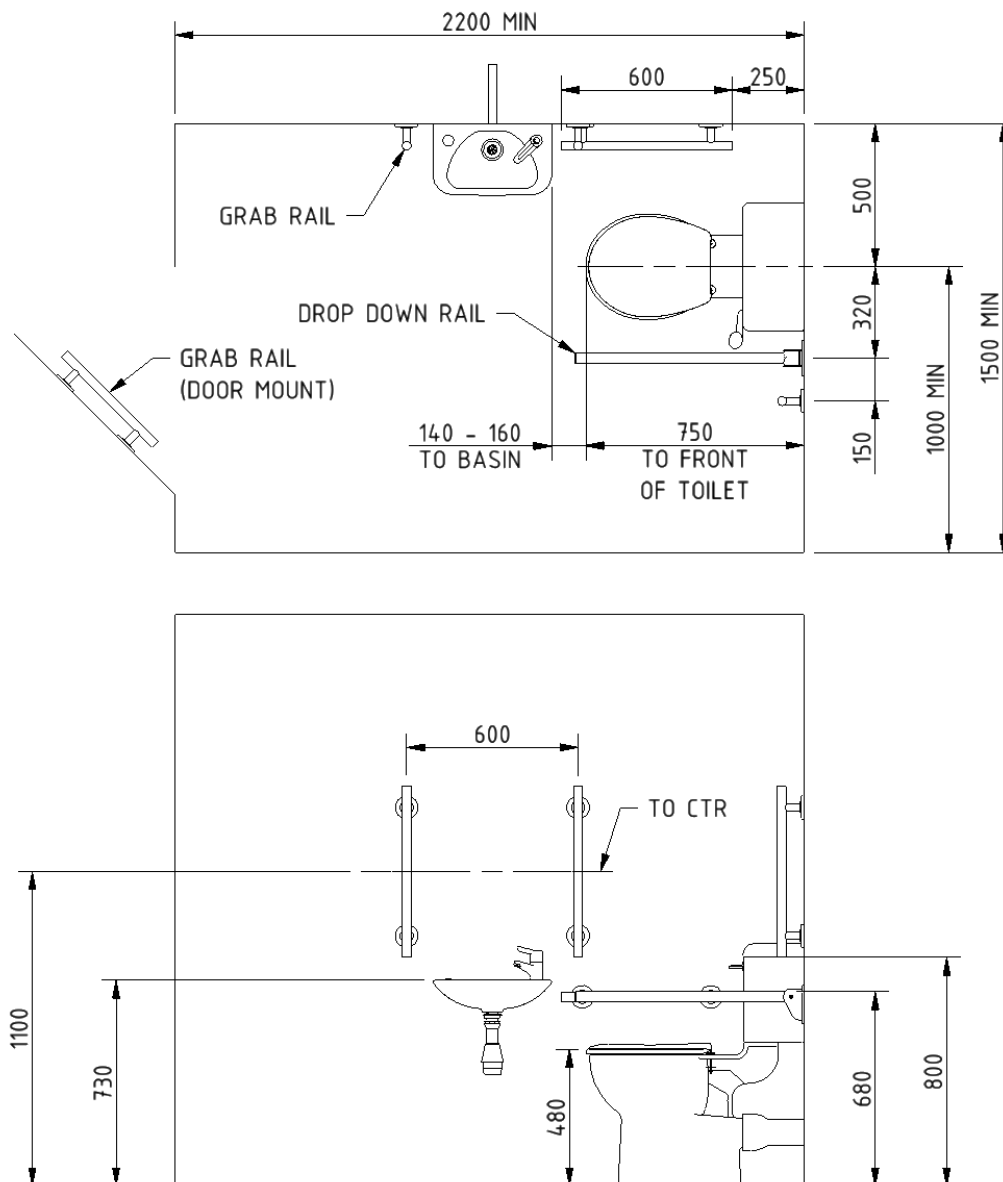
NY03-DM-11120-**

Replace ** with 2-character short code for chosen finish (Mechanical / Powder Coated)
e.g., NY03-DM-11120-SP

Pack Contents

- 4 x 600mm stainless steel luxury grab rails with concealed fixings
- 1 x 450mm stainless steel luxury grab rail with concealed fixings
- 1 x 800mm stainless steel contemporary hinged support rail with concealed fixings
- 1 x Close coupled box rim Doc M pan
- 1 x Close coupled cistern
- 1 x Close coupled cistern fittings and Doc M spatula lever
- 1 x Toilet seat with lid
- 1 x Compact finger rinse Doc M basin
- 1 x Sequential basin mixer tap
- 1 x Tap hole stopper
- 1 x Basin waste
- 1 x TMV3 Valve

Dimensions (mm)



Fitzroy of London may occasionally need to change specification of products and/or kit contents and reserves the right to do so. We strive to keep our documentation up to date; however, we cannot guarantee this. We accept no liability for any information given on this data sheet.

Close coupled box rim Doc M pan



Product details

Warranty: Lifetime

Max load: 400kg

Doc M compliant: Yes

Suitable for wet areas: Yes

Features

- Extended projection to aid compliance with Part M of the Building Regulations
- UKCA and CE compliant
- Comfort height to allow easier side transfer from wheelchair

Finish options



WH
White (RAL 9016)

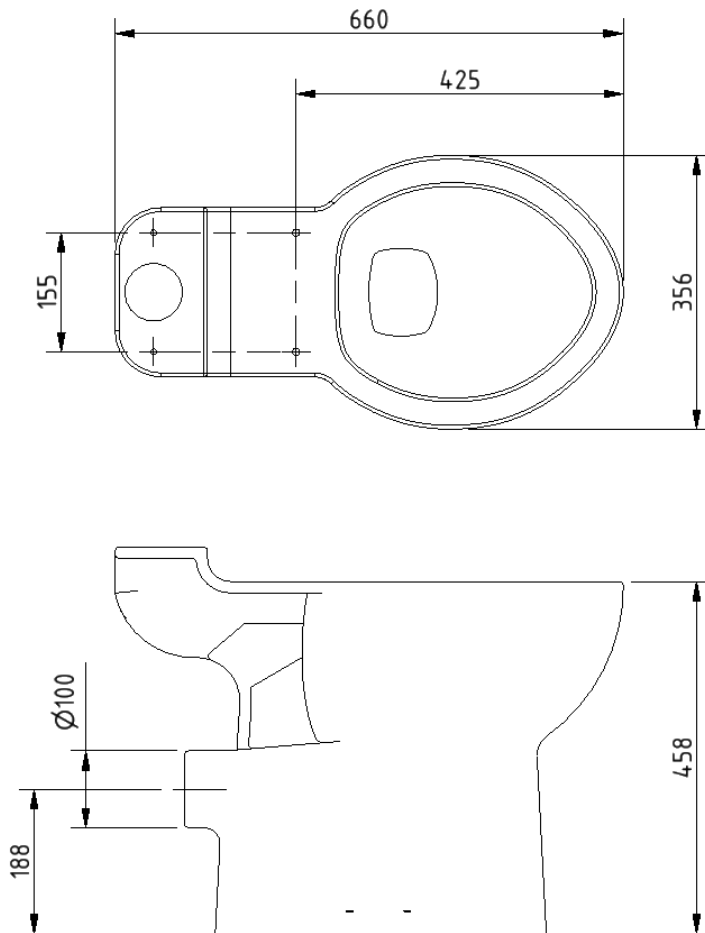
Product description

Close coupled box rim Doc M pan, white

Product code

B-BWPANCC2-1

Dimensions (mm)



Low level box rim Doc M pan



Product details

Warranty: Lifetime

Max load: N/A

Doc M compliant: Yes

Suitable for wet areas: Yes

Features

- Complies with Part M of the Building Regulations
- UKCA and CE compliant
- Suitable for front lever
- Bottom inlet
- Universal – LH or RH
- Lockable lid option

Finish options



Product description

Product code

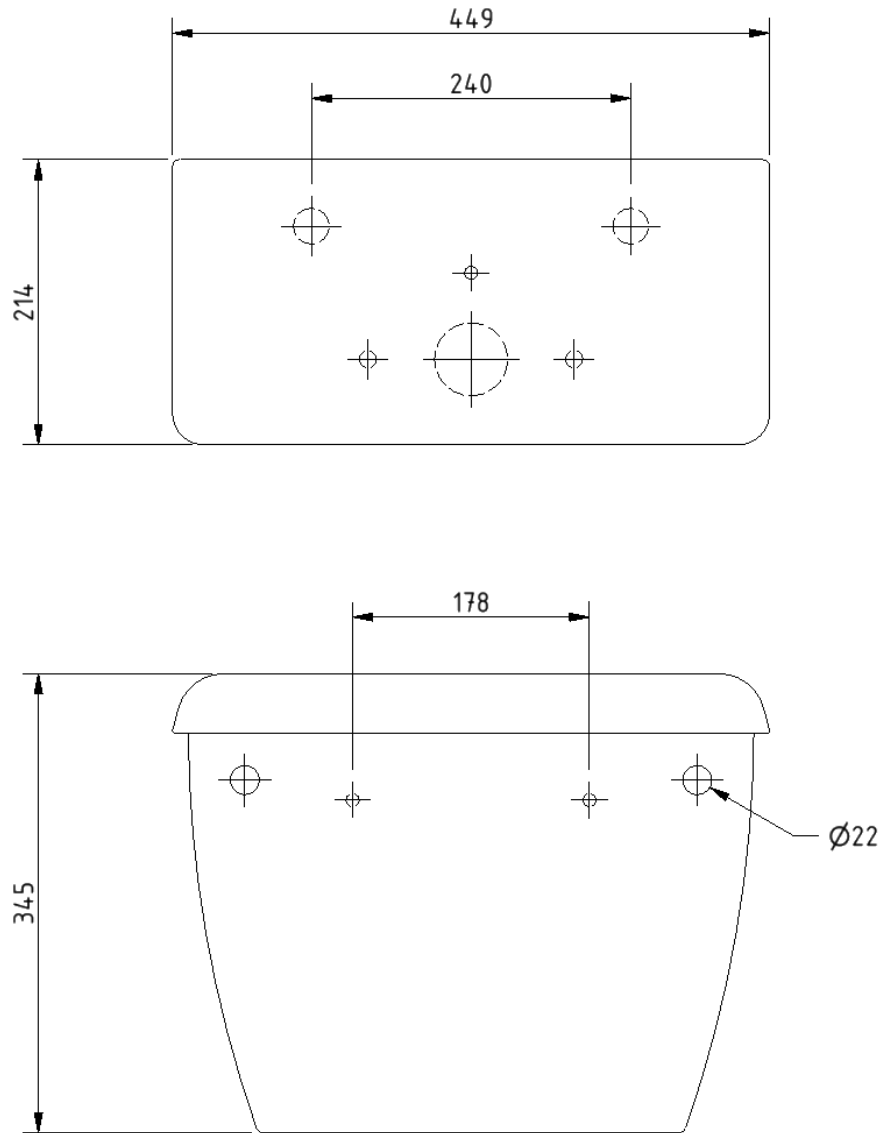
Close coupled cistern for box rim pan

NY01-SW-11090-WH

Close coupled cistern with lockable lid for box rim pan

NY01-SW-11099-WH

Dimensions (mm)



Toilet seat, ring only, stainless steel pillar hinge



Product details

Warranty: 2 years

Max load: 150 kg

Doc M compliant: Yes

Suitable for wet areas: Yes

Features

- Complies with Part M of the Building Regulations
- Anti-bacterial, strong and durable Duroplast seat
- Ergonomic and comfortable shape
- Stainless steel hinge (bottom fix as standard)
Additional hinge pack to convert to top fix: NY-TOPFIXHINGE
- Adjustable locating buffers
- Fits close coupled, low level, back to wall and wall hung pans

Finish options



DB
Dark Blue (RAL 5011)



DG
Dark Grey (RAL 7016)



GY
Grey (RAL 7005)



WH
White (RAL 9016)

Product description

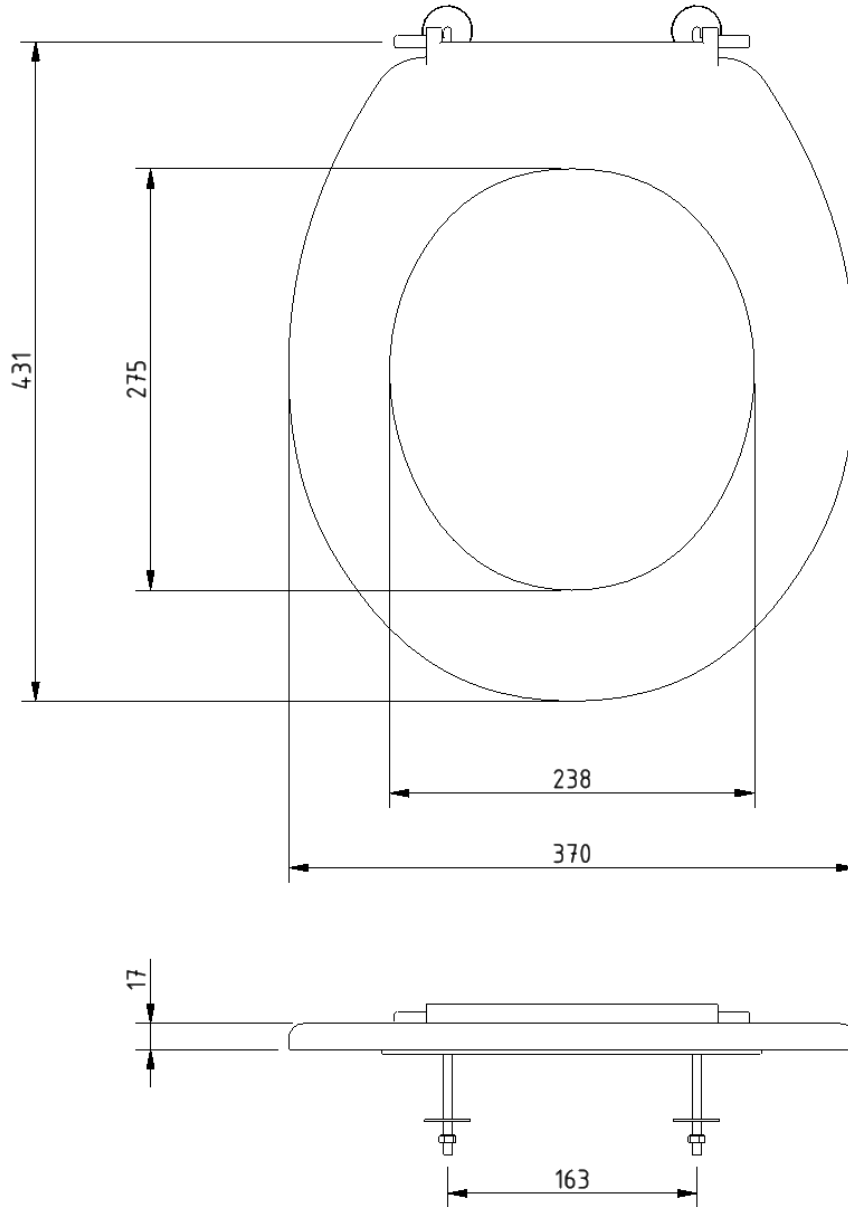
Toilet seat, ring only, stainless steel pillar hinge

Product code

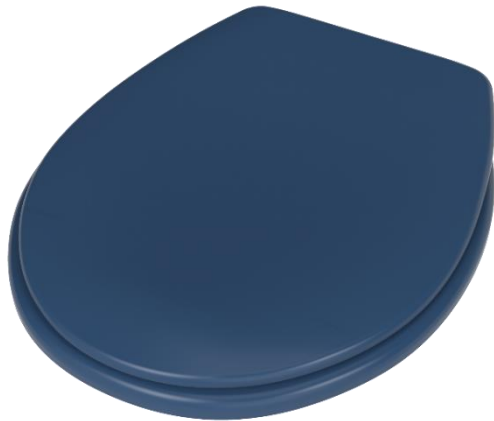
260015/**

Replace ** with 2-character short code for chosen finish.
e.g., 260015/DB

Dimensions (mm)



Toilet seat, ring only, stainless steel pillar hinge



Product details

Warranty: 2 years

Max load: 150 kg

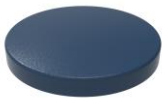
Doc M compliant: No

Suitable for wet areas: Yes

Features

- Complies with Part M of the Building Regulations
- Anti-bacterial, strong and durable Duroplast seat
- Ergonomic and comfortable shape
- Adjustable locating buffers
- Fits close coupled, low level, back to wall and wall hung pans

Finish options



DB
Dark Blue (RAL 5011)



WH
White (RAL 9016)

Product description

Product code

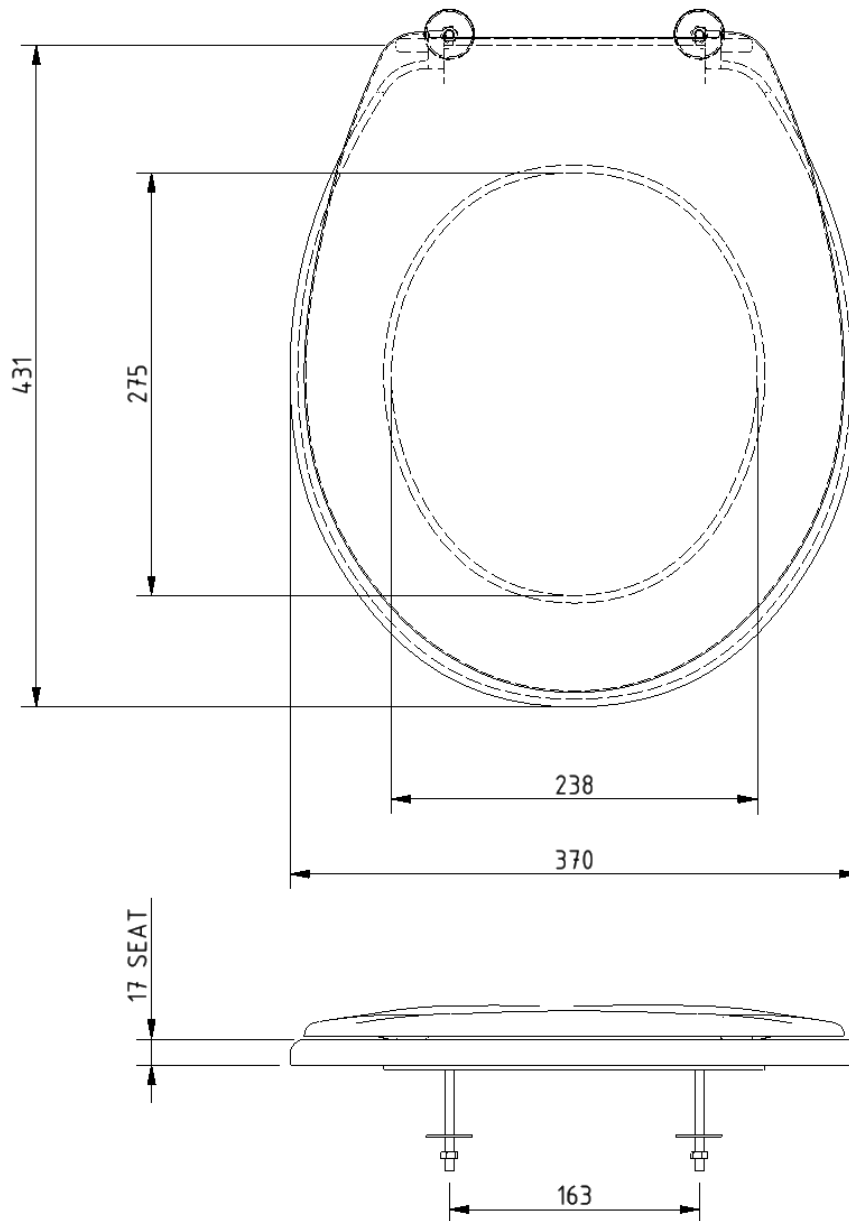
Toilet seat with lid, stainless steel pillar hinge, dark blue (RAL 5011)

260016/DB

Toilet seat with lid, stainless steel pillar hinge, white (RAL 9016)

260016/WH

Dimensions (mm)



Polished chrome sequential basin mixer tap



Product details

Warranty:	2 years
Max load:	N/A
Doc M compliant:	Yes
Suitable for wet areas:	Yes
Flexi tap tail connection (to tap body):	M10 thread
Flexi tap tail (onward connection):	½ inch BSP

Features

- Reg 4 certified (WRAS, NSF, Kiwa, etc.)
- Easy operation for users with limited dexterity
- Cold start

Finish options



CP
Polished Chrome

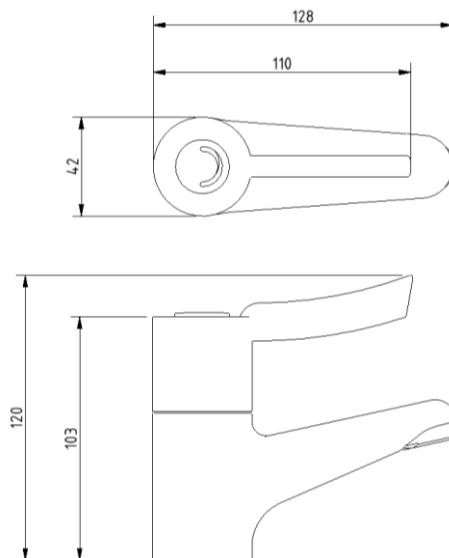
Product description

Sequential basin mixer tap, polished chrome

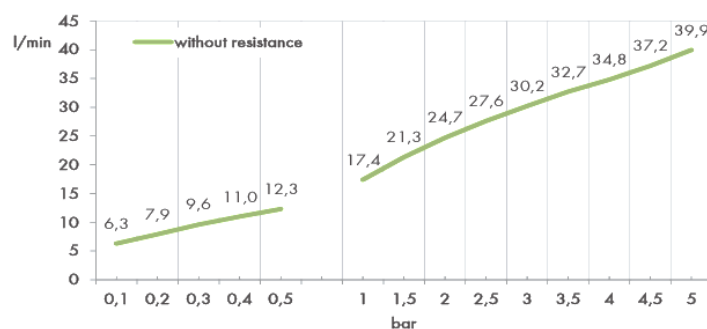
Product code

BPLMON

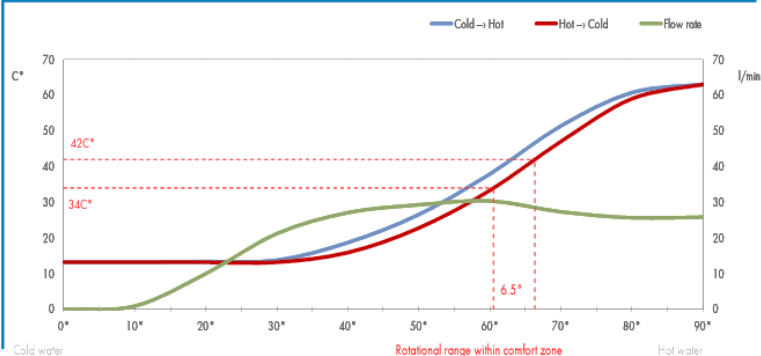
Dimensions (mm)



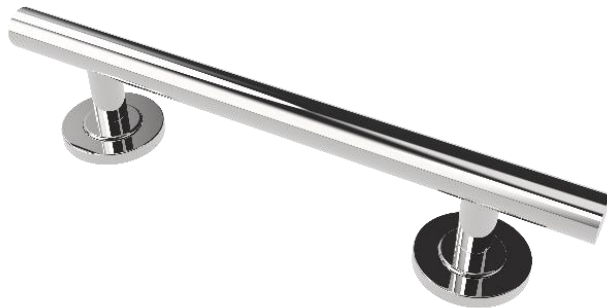
FLOW RATE CURVE



FLOW RATE & HYSTERESIS CURVES



Luxury straight stainless steel concealed fixing grab rail



Product details

Warranty:	5 Years
Max load:	150 kg
Doc M compliant:	Yes
Suitable for wet areas:	Yes

Features

- High quality stainless steel construction
- Concealed fixing grab rails
- Complies with Doc M of the Building Regulations
- Stylish 'T-Bar' design

Finish options

Mechanical



SS
Satin Stainless Steel



SP
Polished Stainless Steel

Powder Coated



MB
Matt Black (RAL 9005)

Product description

Product code

Luxury straight, stainless steel concealed fixing grab rail, 300mm

F22-0300-LSC-**

Luxury straight, stainless steel concealed fixing grab rail, 450mm

F22-0450-LSC-**

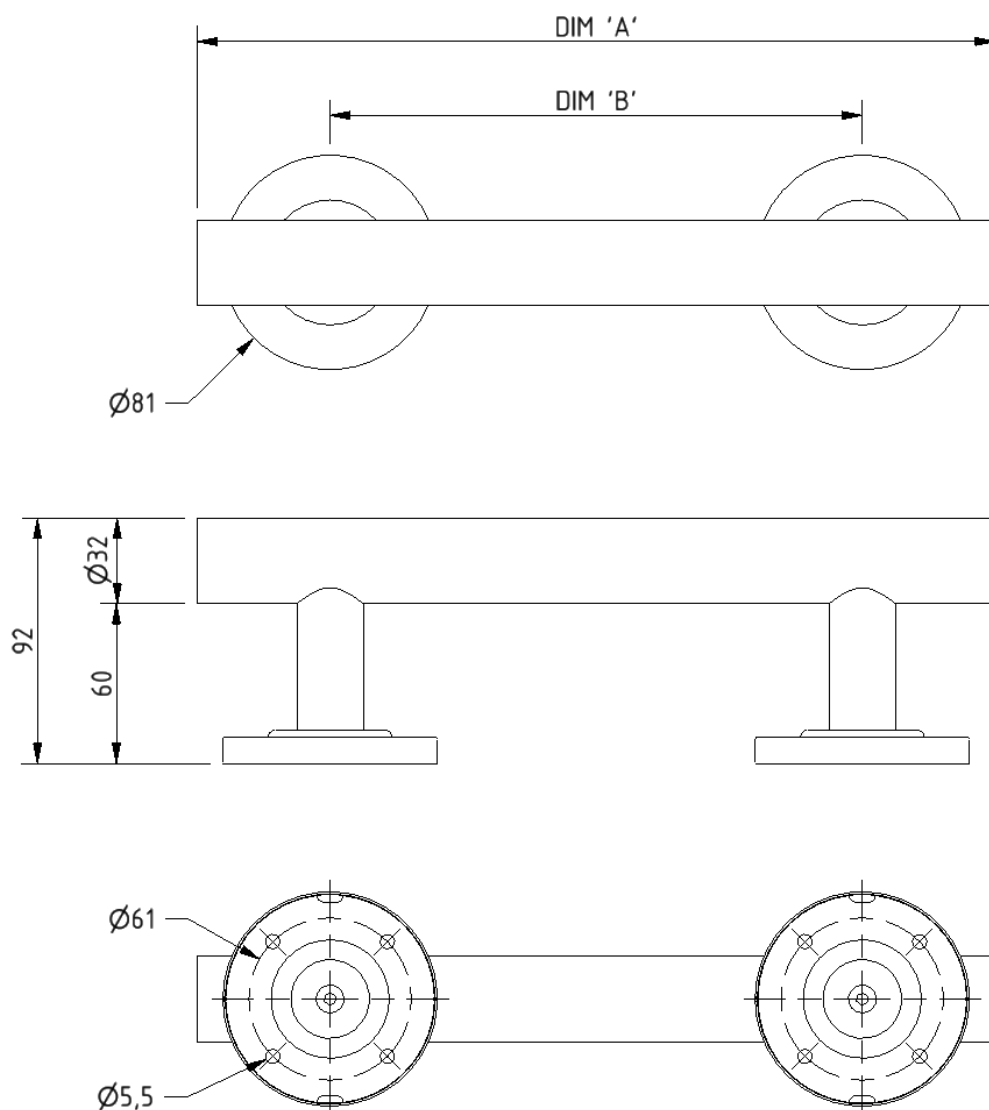
Luxury straight, stainless steel concealed fixing grab rail, 600mm

F22-0600-LSC-**

Luxury straight, stainless steel concealed fixing grab rail, 900mm

F22-0900-LSC-**

Replace ** with 2-character short code for chosen finish (Mechanical / Powder Coated).
e.g., F22-0300-LSC-SS

Dimensions (mm)


PRODUCT CODE	F22-0300-LSC	F22-0450-LSC	F22-0600-LSC	F22-0900-LSC
DIM 'A'	300	450	600	900
DIM 'B'	200	300	450	750

Contemporary single arm stainless steel friction hinged rail with concealed fixings



Product details

Warranty: 5 years

Max load: 90 kg

Doc M compliant: Yes

Suitable for wet areas: Yes

Features

- Contemporary single arm design
- Premium friction folding mechanism
- High quality stainless steel construction
- Complies with Part M of the Building Regulations

Finish options

Mechanical



SP

Polished Stainless Steel



SS

Satin Stainless Steel

Powder Coated



MB

Matt Black (RAL 9005)

Product description

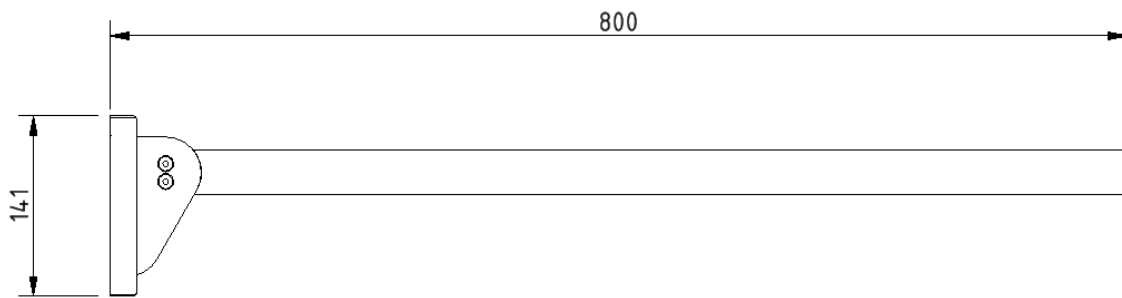
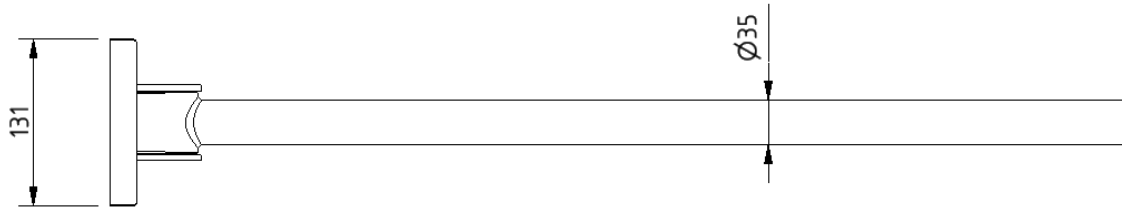
Contemporary single arm friction rail, stainless steel, concealed fixings

Product code

310480C/**

Replace ** with 2-character short code for chosen finish (Mechanical / Powder Coated).
e.g., 310480C/SP

Dimensions (mm)



TMV3 inline thermostatic mixing valve



Product details

Warranty: 2 years

Max load: N/A

Doc M compliant: Yes

Suitable for wet areas: Yes

Features

- TMV3 approved & Reg 4 Certified (WRAS, NSF, Kiwa, etc.)
- Complies with Part M of the Building Regulations
- Building Regulations Part G compliant
- Highly resistant to scaling
- Anti-tamper proof head
- Complies with HTM04-01 D08
- TMV2 approved & complies with BS EN 1111 & BS EN 1287:2017
- Integral check valves & strainers

Finish options



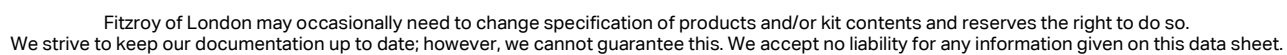
CP
Polished Chrome

Product description

TMV3 inline thermostatic mixing valve - 15mm

Product code

BPLTMV



Compact finger rinse Doc M basin



Product details

Warranty: Lifetime

Max load: N/A

Doc M compliant: Yes

Suitable for wet areas: Yes

Features

- Two tap holes for left or right-handed configuration
- Compact design to maximise space for a wheelchair user
- Complies with Part M of the Building Regulations
- Contemporary design
- No overflow
- CE Marked, compliant sanitary ware
- Wall fixings included

Finish options



WH
White (RAL 9016)

Product description

Compact finger rinse Doc M basin, two tap holes, no overflow, white (RAL 9016)

Product code

F20-BA01-CER-WH

Dimensions (mm)

