

## Premium rimless luxury close coupled Doc M toilet pack



### Product details

**Warranty:** See individual products

**Max load:** See individual products

**Doc M compliant:** Yes

**Suitable for wet areas:** Yes

### Features

- Complies with Part M of the Building Regulations
- Inlet valve and syphon Reg 4 Certified (WRAS, NSF, Kiwa, etc.)
- Premium rimless pan
- Lockable cistern lid
- Concealed fixing stainless steel grab rails
- Concealed fixing stainless steel hinged rail
- Simple one box solution
- Optional TMV3 Valve / TMV3 tap

### Finish options

#### Mechanical



**SP**  
Polished Stainless Steel



**SS**  
Satin Stainless Steel

#### Powder Coated



**MB**  
Matt Black (RAL 9005)

### Product description

### Product code

Premium rimless left-handed luxury close coupled Doc M toilet pack, lockable cistern lid	NY03-DM-13001-**
Premium rimless right-handed luxury close coupled Doc M toilet pack, lockable cistern lid	NY03-DM-13002-**
Premium rimless left-handed luxury close coupled Doc M toilet pack, lockable cistern lid, TMV3 valve	NY03-DM-13101-**
Premium rimless right-handed luxury close coupled Doc M toilet pack, lockable cistern lid, TMV3 valve	NY03-DM-13102-**
Premium rimless left-handed luxury close coupled Doc M toilet pack, lockable cistern lid, TMV3 tap	NY03-DM-13201-**
Premium rimless right-handed luxury close coupled Doc M toilet pack, lockable cistern lid, TMV3 tap	NY03-DM-13202-**

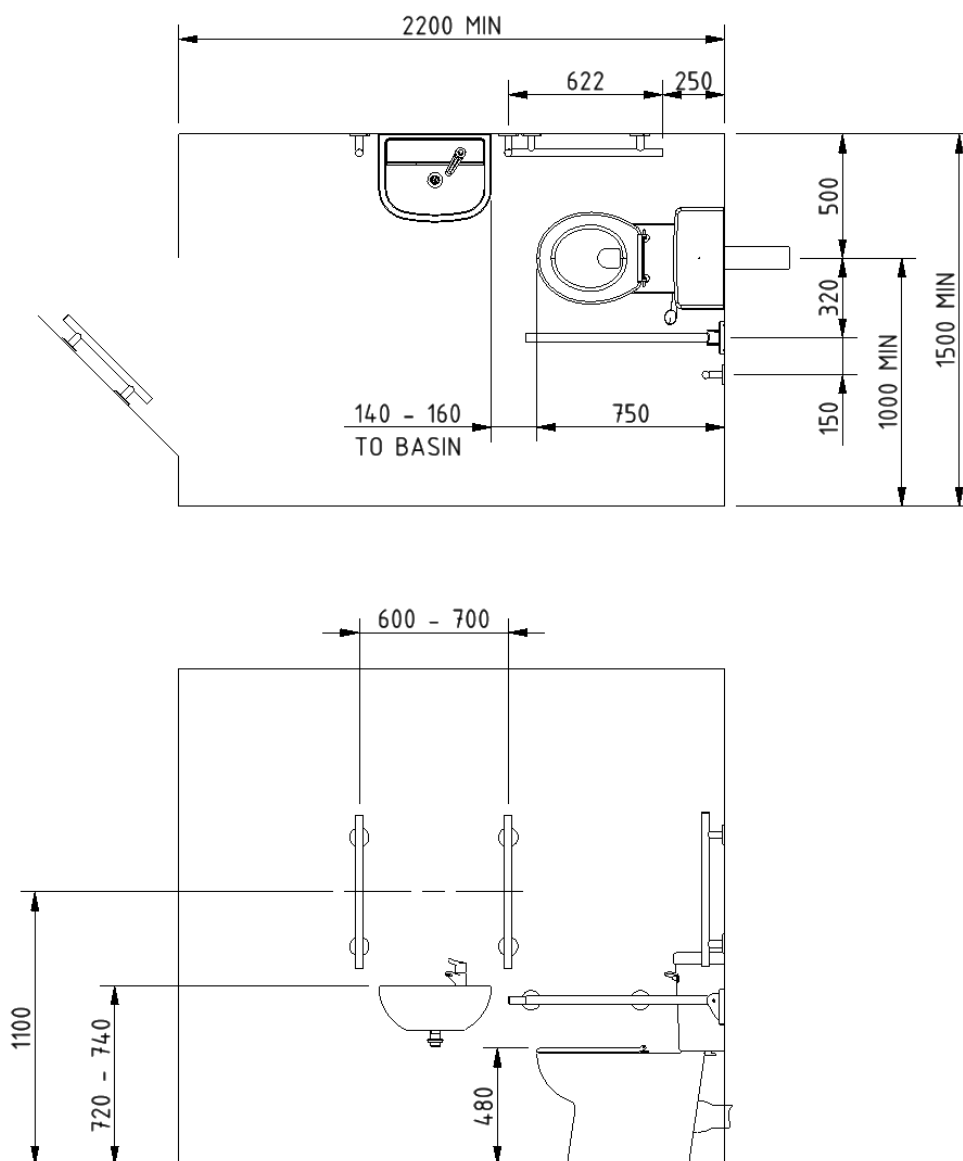
Replace \*\* with 2-character short code for chosen finish (Mechanical / Powder Coated)  
e.g., NY03-DM-13001-SP

Need some product advice? Contact our team of product specialists  
+44(0)1642 710 719 | [sales@fitzroyoflondon.com](mailto:sales@fitzroyoflondon.com)  
[www.fitzroyoflondon.com](http://www.fitzroyoflondon.com)

## Pack Contents

- 4 x 600mm stainless steel luxury grab rails with concealed fixings
- 1 x 450mm stainless steel luxury grab rail with concealed fixings
- 1 x 800mm stainless steel contemporary hinged support rail with concealed fixings
- 1 x Close coupled premium rimless Doc M pan
- 1 x Close coupled cistern with lockable lid
- 1 x Close coupled cistern fitting pack with basin waste and Doc M spatula lever
- 1 x Ring only toilet seat
- 1 x One tap hole basin (either left or right hand)
- 1 x Sequential basin mixer tap (optional thermostatic mixer tap - NY03-DM-1320x only)
- 1 x TMV3 Valve (NY03-DM-1310x only)

## Dimensions (mm)



Fitzroy of London may occasionally need to change specification of products and/or kit contents and reserves the right to do so. We strive to keep our documentation up to date; however, we cannot guarantee this. We accept no liability for any information given on this data sheet.

## Premium rimless close coupled Doc M pan



### Product details

<b>Warranty:</b>	Lifetime
<b>Max load:</b>	400kg
<b>Doc M compliant:</b>	Yes
<b>Suitable for wet areas:</b>	Yes

### Features

- Rimless design for ease of cleaning
- Extended projection to aid compliance with Part M of the Building Regulations
- UKCA and CE compliant
- Comfort height to allow easier side transfer from wheelchair

### Finish options



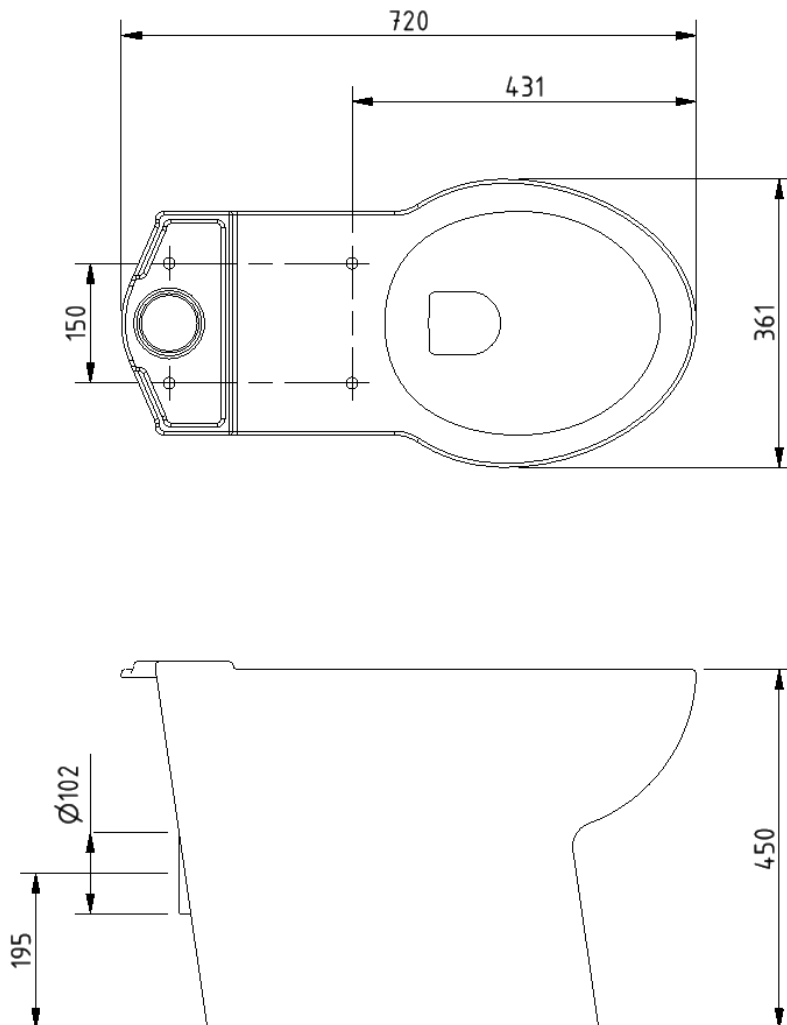
### Product description

Premium rimless close coupled Doc M pan

### Product code

NY02-SW-13000-WH

Dimensions (mm)



Close coupled cistern with lockable lid for premium rimless Doc M pan



#### Product details

Warranty:	Lifetime
Max load:	N/A
Doc M compliant:	Yes
Suitable for wet areas:	Yes

#### Features

- Complies with Part M of the Building Regulations
- UKCA & CE compliant
- Suitable for front lever
- Bottom inlet
- Universal - either left or right handed
- Lockable lid

#### Finish options



**WH**  
White

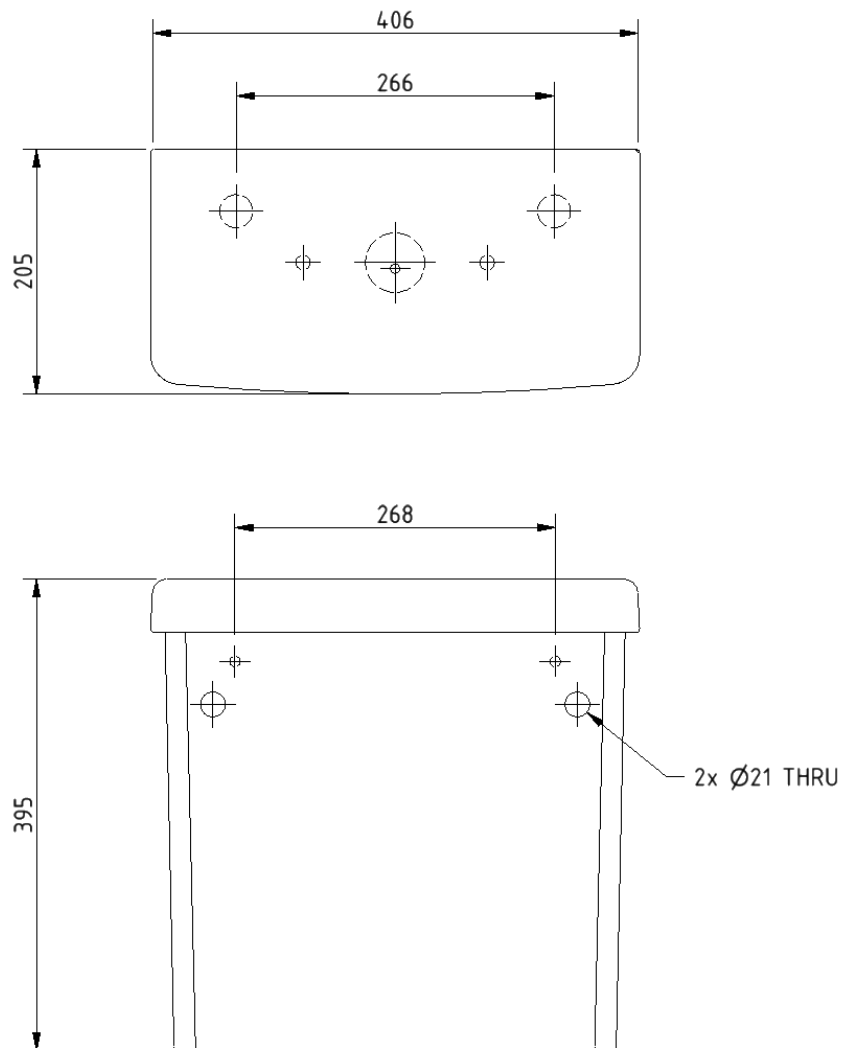
#### Product description

Close coupled cistern with lockable lid for premium rimless Doc M pan

#### Product code

NY02-SW-21090-WH

Dimensions (mm)



## Cistern fitting pack for close coupled premium rimless pan



### Product details

**Warranty:** 2 years

**Max load:** N/A

**Doc M compliant:** Yes

**Suitable for wet areas:** Yes

### Features

- Inlet valve and syphon Reg 4 Certified (WRAS, NSF, Kiwa, etc.)
- Can provide both full and half flush
- Doc M spatula lever to provide easy operation for users with limited dexterity
- 6 litre flush

### Product description

Close coupled cistern fittings pack for premium rimless pan, including lever

### Product code

SANCCPK-3

### Pack contents

- 1 x Inlet valve
- 1 x Syphon
- 1 x Doc M spatula lever
- 2 x Cistern blanking plugs
- 1 x Close coupled fixing bolts
- 1 x lockable lid fixings

Need some product advice? Contact our team of product specialists

+44(0)1642 710 719 | [sales@fitzroyoflondon.com](mailto:sales@fitzroyoflondon.com)

[www.fitzroyoflondon.com](http://www.fitzroyoflondon.com)

DAT-SANCCPK-3 Doc Rev 1

Fitzroy of London may occasionally need to change specification of products and/or kit contents and reserves the right to do so.

## Toilet seat, ring only, stainless steel pillar hinge



### Product details

**Warranty:** 2 years

**Max load:** 150 kg

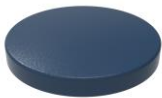
**Doc M compliant:** Yes

**Suitable for wet areas:** Yes

### Features

- Complies with Part M of the Building Regulations
- Anti-bacterial, strong and durable Duroplast seat
- Ergonomic and comfortable shape
- Stainless steel hinge (bottom fix as standard)  
Additional hinge pack to convert to top fix: NY-TOPFIXHINGE
- Adjustable locating buffers
- Fits close coupled, low level, back to wall and wall hung pans

### Finish options



**DB**  
Dark Blue (RAL 5011)



**DG**  
Dark Grey (RAL 7016)



**GY**  
Grey (RAL 7005)



**WH**  
White (RAL 9016)

### Product description

Toilet seat, ring only, stainless steel pillar hinge

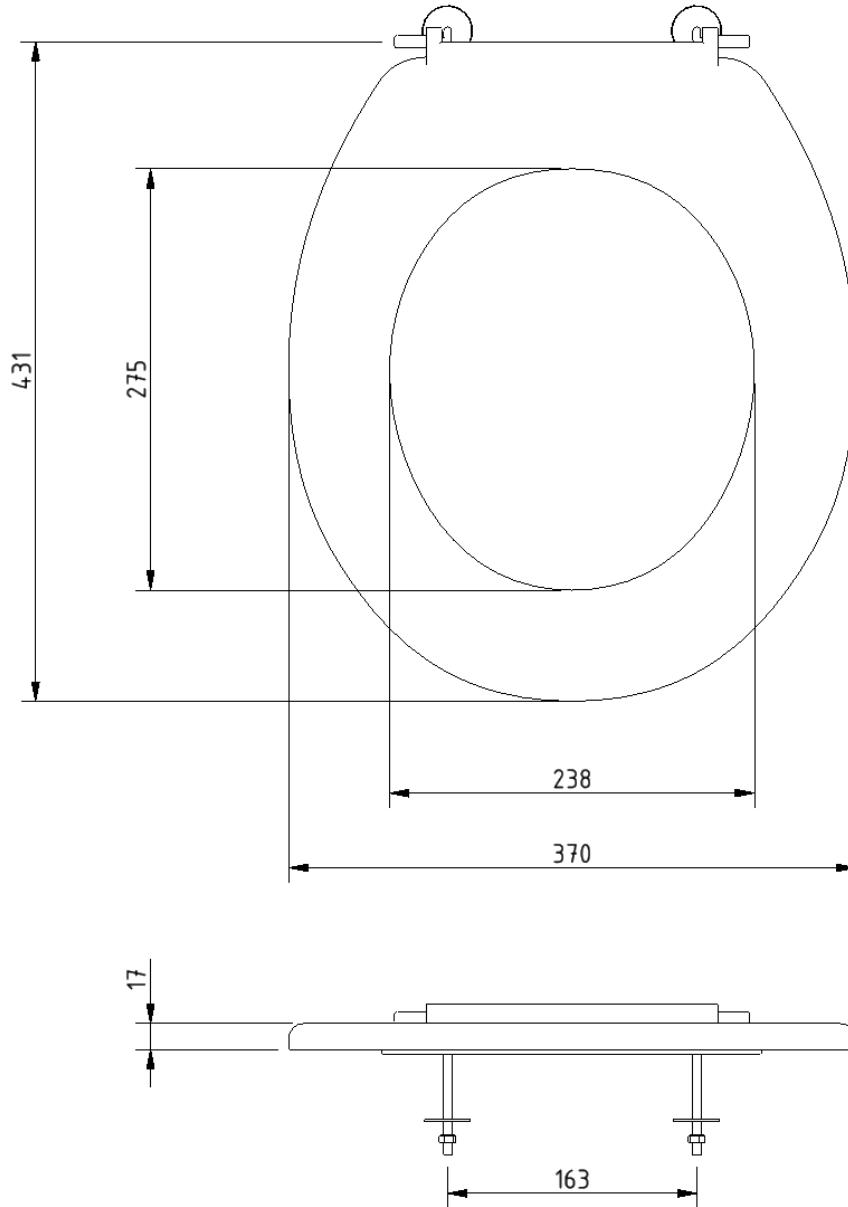
### Product code

260015/\*\*

Replace \*\* with 2-character short code for chosen finish.  
e.g., 260015/DB



Dimensions (mm)



## Top fix toilet seat hinge



### Product details

**Warranty:** 2 years

**Max load:** N/A

**Doc M compliant:** N/A

**Suitable for wet areas:** Yes

### Features

- Toilet seat hinge for use with premium rimless sanitary ware

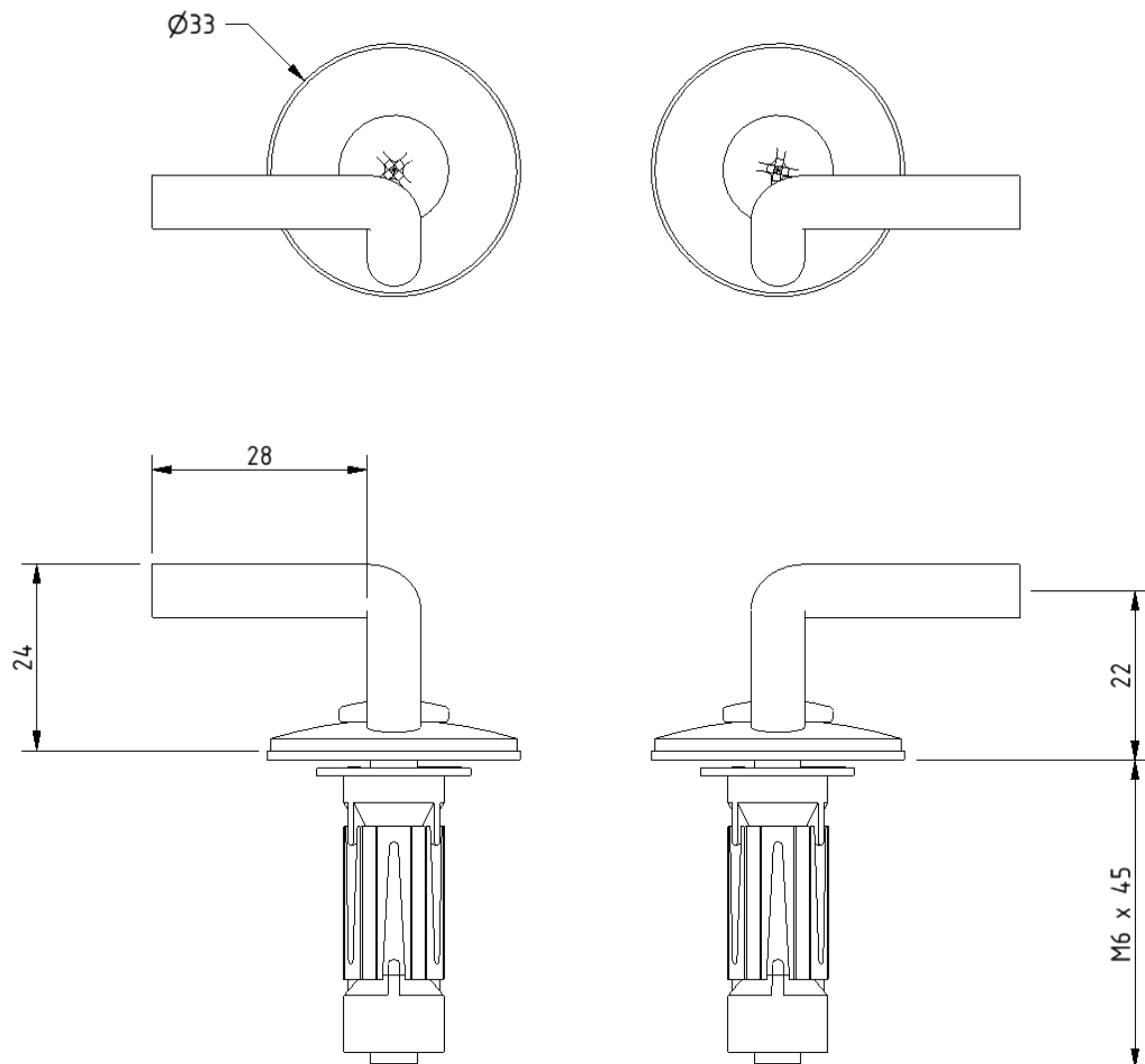
### Product description

Top fix toilet seat hinge

### Product code

NY-TOPFIXHINGE

Dimensions (mm)



## Premium Doc M basin



### Product details

**Warranty:** Lifetime

**Max load:** N/A

**Doc M compliant:** Yes

**Suitable for wet areas:** Yes

### Features

- Multiple tap hole configurations available removing the need for blanking caps
- Complies with Part M of the Building Regulations
- No overflow

Does **NOT** come with wall fixings (P-000247-X00X)

## Finish options



**WH**  
White

## Product description

## Product code

Premium Doc M basin, two tap holes, no overflow, white

NY02-SW-00100-WH

Premium Doc M basin, left handed tap hole, no overflow, white

NY02-SW-00101-WH

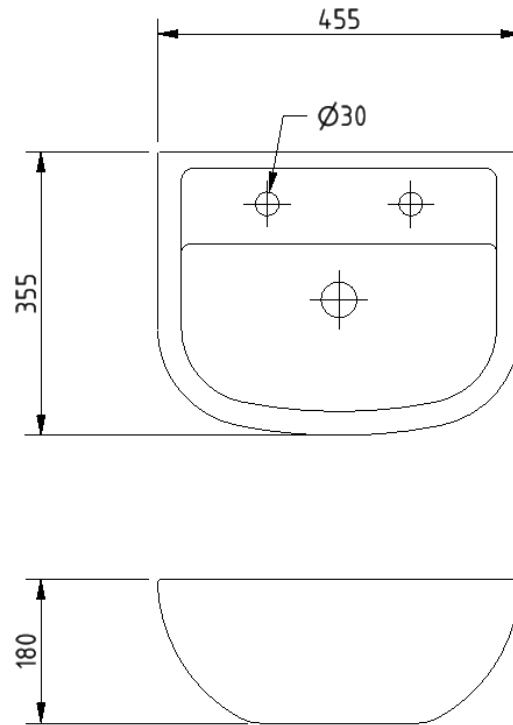
Premium Doc M basin, right handed tap hole, no overflow, white

NY02-SW-00102-WH

Premium Doc M basin, central tap hole, no overflow, white

NY02-SW-00103-WH

**Dimensions (mm)**



FOR TAP HOLE POSITION DIMENSIONS SEE PRODUCT SPECIFIC MARKETING DRAWING

## Premium basin fixing kit



### Product details

**Warranty:** 5 years

**Max load:** N/A

**Doc M compliant:** N/A

**Suitable for wet areas:** Yes

### Features

- Heavy duty basin fixing
- For use with premium Doc M basin (NY02-SW-0010x-WH)

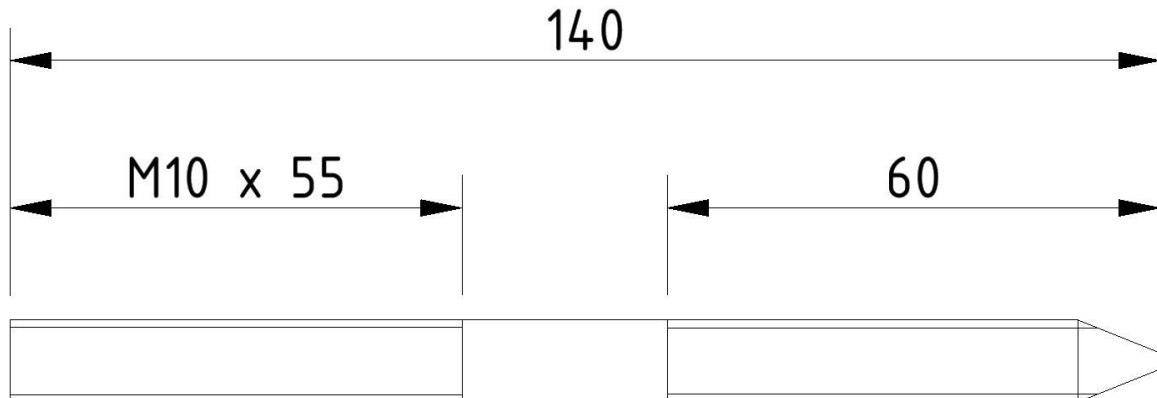
### Product description

Premium basin fixing kit, M10 x 140mm

### Product code

P-000247-X00X

### Dimensions (mm)



Need some product advice? Contact our team of product specialists  
+44(0)1642 710 719 | [sales@fitzroyoflondon.com](mailto:sales@fitzroyoflondon.com)

[www.fitzroyoflondon.com](http://www.fitzroyoflondon.com)

DAT-P-000247 Doc Rev 1

Fitzroy of London may occasionally need to change specification of products and/or kit contents and reserves the right to do so.  
We strive to keep our documentation up to date; however, we cannot guarantee this. We accept no liability for any information given on this data sheet.

## Basin waste with stainless steel grid



### Product details

**Warranty:** 2 years

**Max load:** N/A

**Doc M compliant:** Yes

**Suitable for wet areas:** Yes

### Features

- Slotted type for use with basins without overflow
- Manufactured from high quality materials
- Quick and simple installation

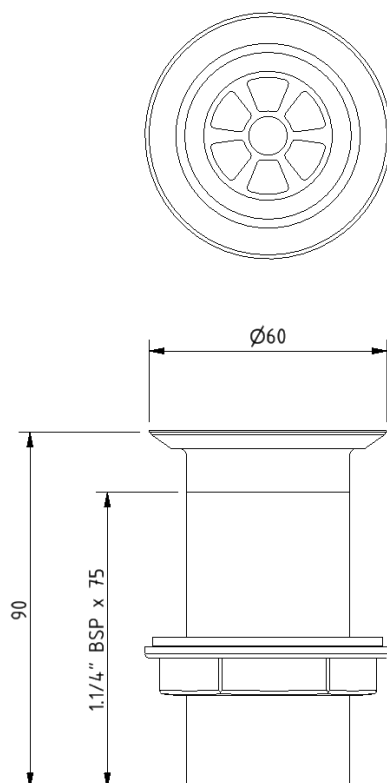
### Product description

Basin waste, plastic body, white, stainless grid, unslotted, 1-1/4" BSP thread

### Product code

P-000245-X00X

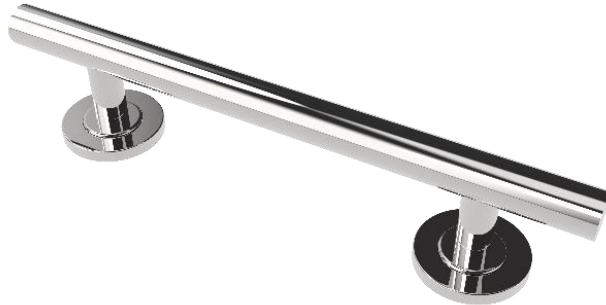
### Dimensions (mm)



Fitzroy of London may occasionally need to change specification of products and/or kit contents and reserves the right to do so. We strive to keep our documentation up to date; however, we cannot guarantee this. We accept no liability for any information given on this data sheet.

Need some product advice? Contact our team of product specialists  
+44(0)1642 710 719 | [sales@fitzroyoflondon.com](mailto:sales@fitzroyoflondon.com)  
[www.fitzroyoflondon.com](http://www.fitzroyoflondon.com)

## Luxury straight stainless steel concealed fixing grab rail



### Product details

<b>Warranty:</b>	5 Years
<b>Max load:</b>	150 kg
<b>Doc M compliant:</b>	Yes
<b>Suitable for wet areas:</b>	Yes

### Features

- High quality stainless steel construction
- Concealed fixing grab rails
- Complies with Doc M of the Building Regulations
- Stylish 'T-Bar' design

## Finish options

### Mechanical



**SS**  
Satin Stainless Steel



**SP**  
Polished Stainless Steel

### Powder Coated



**MB**  
Matt Black (RAL 9005)

## Product description

## Product code

Luxury straight, stainless steel concealed fixing grab rail, 300mm

F22-0300-LSC-\*\*

Luxury straight, stainless steel concealed fixing grab rail, 450mm

F22-0450-LSC-\*\*

Luxury straight, stainless steel concealed fixing grab rail, 600mm

F22-0600-LSC-\*\*

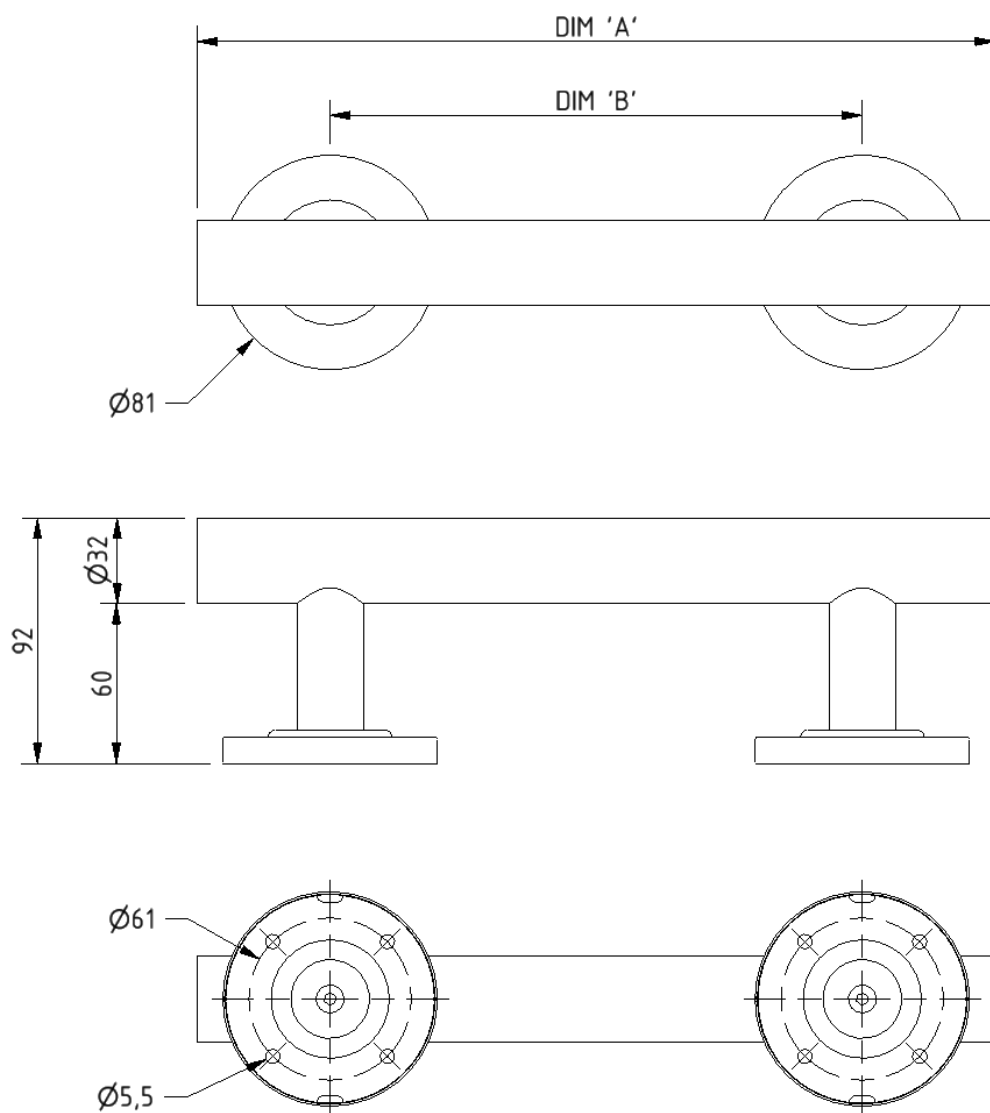
Luxury straight, stainless steel concealed fixing grab rail, 900mm

F22-0900-LSC-\*\*

Replace \*\* with 2-character short code for chosen finish (Mechanical / Powder Coated).  
e.g., F22-0300-LSC-SS



# Dimensions (mm)



PRODUCT CODE	F22-0300-LSC	F22-0450-LSC	F22-0600-LSC	F22-0900-LSC
DIM 'A'	300	450	600	900
DIM 'B'	200	300	450	750

## Contemporary single arm stainless steel friction hinged rail with concealed fixings



### Product details

**Warranty:** 5 years

**Max load:** 90 kg

**Doc M compliant:** Yes

**Suitable for wet areas:** Yes

### Features

- Contemporary single arm design
- Premium friction folding mechanism
- High quality stainless steel construction
- Complies with Part M of the Building Regulations

### Finish options

#### Mechanical



**SP**

Polished Stainless Steel



**SS**

Satin Stainless Steel

#### Powder Coated



**MB**

Matt Black (RAL 9005)

### Product description

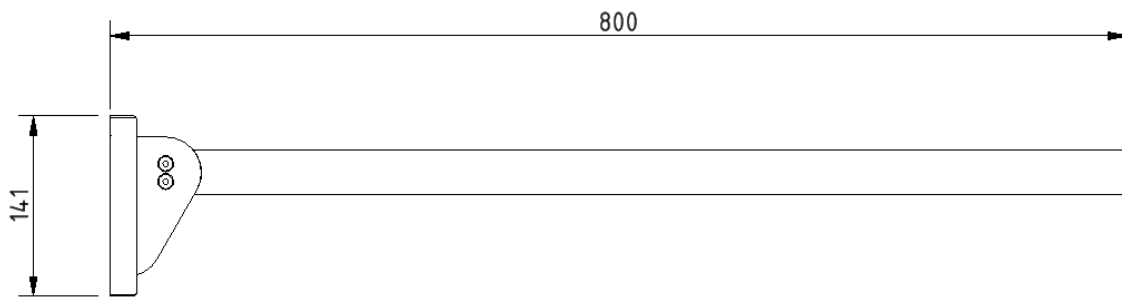
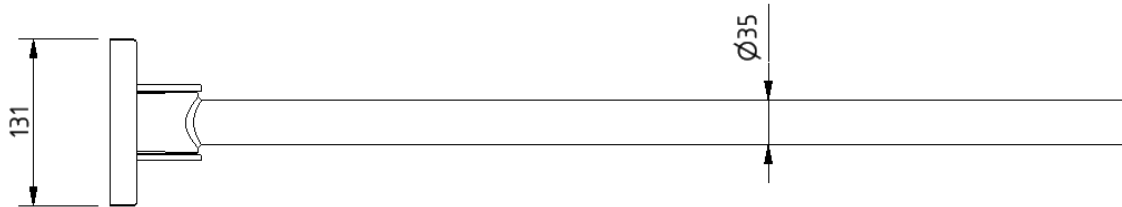
Contemporary single arm friction rail, stainless steel, concealed fixings

### Product code

310480C/\*\*

Replace \*\* with 2-character short code for chosen finish (Mechanical / Powder Coated).  
e.g., 310480C/SP

Dimensions (mm)



## Polished chrome sequential basin mixer tap



### Product details

<b>Warranty:</b>	2 years
<b>Max load:</b>	N/A
<b>Doc M compliant:</b>	Yes
<b>Suitable for wet areas:</b>	Yes
<b>Flexi tap tail connection (to tap body):</b>	M10 thread
<b>Flexi tap tail (onward connection):</b>	½ inch BSP

### Features

- Reg 4 certified (WRAS, NSF, Kiwa, etc.)
- Easy operation for users with limited dexterity
- Cold start

### Finish options



**CP**  
Polished Chrome

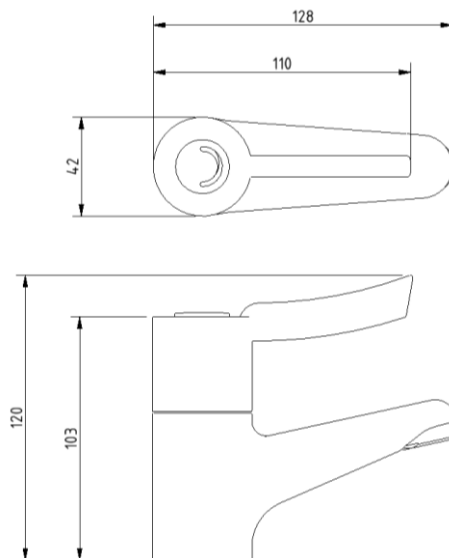
### Product description

Sequential basin mixer tap, polished chrome

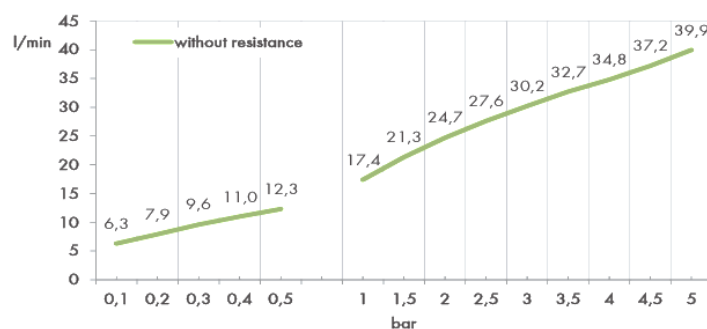
### Product code

BPLMON

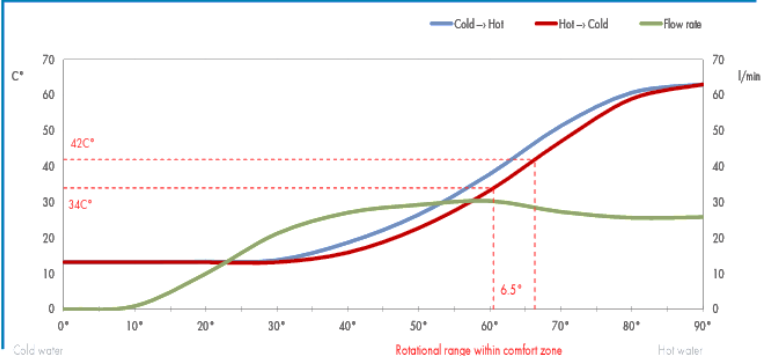
## Dimensions (mm)



## FLOW RATE CURVE



## FLOW RATE & HYSTERESIS CURVES



## TMV3 inline thermostatic mixing valve



### Product details

**Warranty:** 2 years

**Max load:** N/A

**Doc M compliant:** Yes

**Suitable for wet areas:** Yes

### Features

- TMV3 approved & Reg 4 Certified (WRAS, NSF, Kiwa, etc.)
- Complies with Part M of the Building Regulations
- Building Regulations Part G compliant
- Highly resistant to scaling
- Anti-tamper proof head
- Complies with HTM04-01 D08
- TMV2 approved & complies with BS EN 1111 & BS EN 1287:2017
- Integral check valves & strainers

### Finish options



**CP**  
Polished Chrome

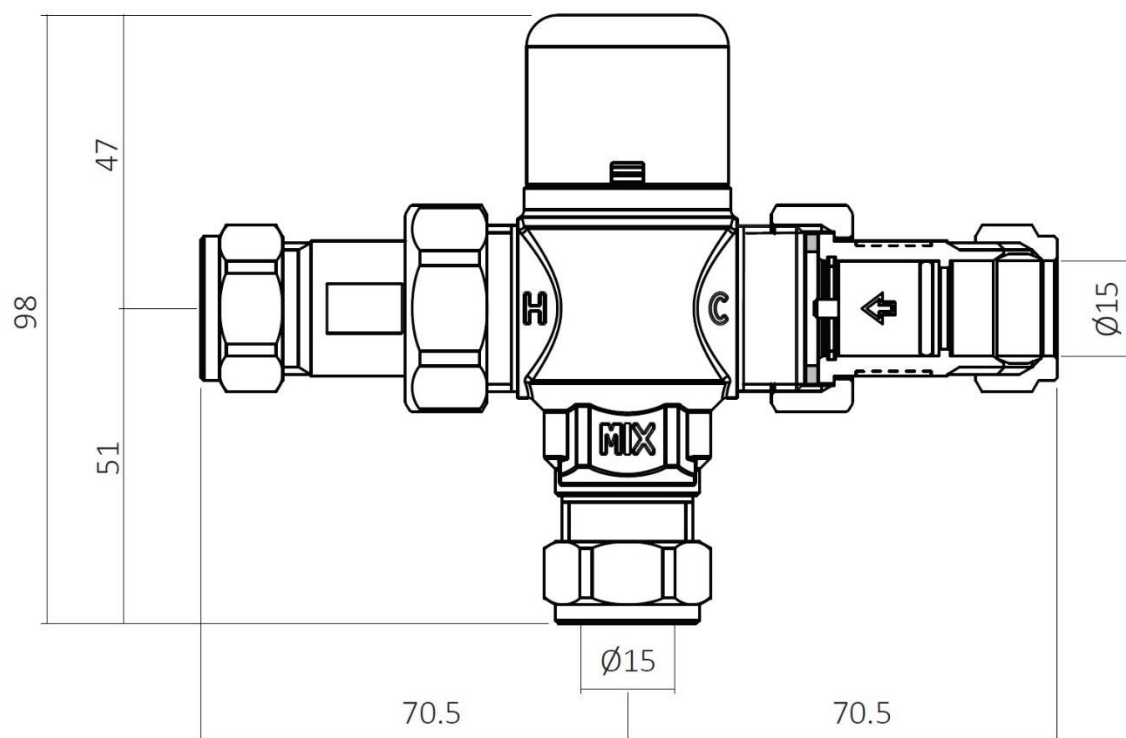
### Product description

TMV3 inline thermostatic mixing valve - 15mm

### Product code

BPLTMV

Dimensions (mm)



**TMV3 thermostatic mixer tap**

**Product details**

**Warranty:** 5 years

**Max load:** N/A

**Doc M compliant:** Yes

**Suitable for wet areas:** Yes

**Max Inlet Temp:** 85°C

**Factory Set Temp:** 43°C

**Max Operating Pressure:** 10 BAR Static

**Min Inlet Pressure:** 0.2 BAR Dynamic

**Features**

- Reg 4 Certified (WRAS, NSF, Kiwa, etc.)
- TMV3 Approved
- Safe touch body
- Copper inlet tails
- Self-draining spout
- Complies with Part M of the Building Regulations
- Easy operation for users with limited dexterity
- System Installation: Unvented, Pressurised, Gravity & Combination

**Finish options**


**CP**  
Polished Chrome

**Product description**

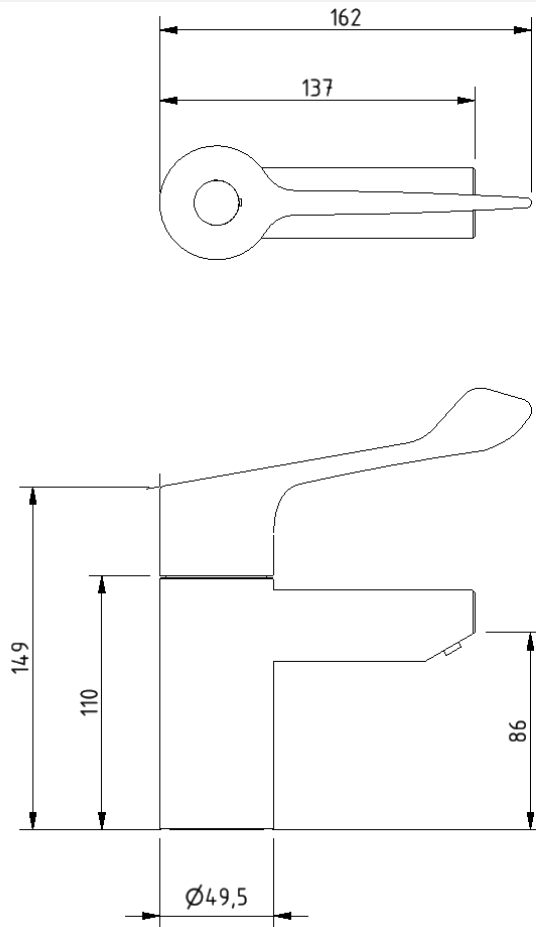
TMV3 thermostatic mixer tap, polished chrome

**Product code**

TAPTMOV/CP



Dimensions (mm)



*FLOW RATE FOR TAPTMV*

