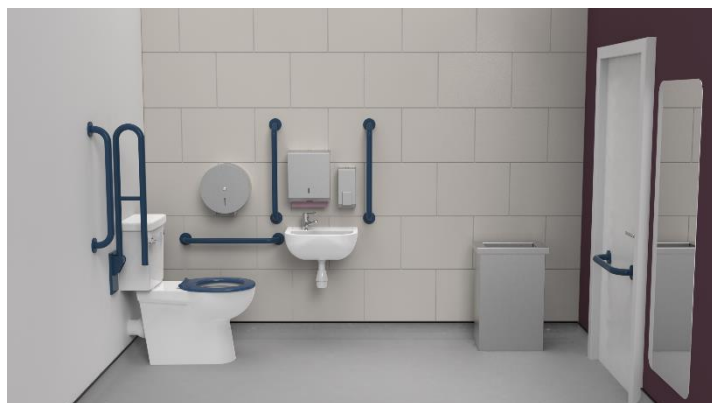


## Premium rimless close coupled Doc M toilet pack



### Product details

<b>Warranty:</b>	See individual products
<b>Max load:</b>	See individual products
<b>Doc M compliant:</b>	Yes
<b>Suitable for wet areas:</b>	Yes

### Features

- Complies with Part M of the Building Regulations
- Inlet valve and syphon Reg 4 Certified (WRAS, NSF, Kiwa, etc.)
- Premium rimless pan
- Lockable cistern lid
- Concealed fixing stainless steel grab rails
- Concealed fixing stainless steel hinged rail
- Simple one box solution
- Optional TMV3 valve

### Finish options

#### Powder Coated



**DB**  
Dark Blue (RAL 5011)



**DG**  
Dark Grey (RAL 7016)



**GY**  
Grey (RAL 7005)



**WH**  
White (RAL 9016)

#### Mechanical



**SP**  
Polished Stainless Steel



**SS**  
Satin Stainless Steel

### Product description

### Product code

Premium rimless left-handed close coupled Doc M toilet pack, stainless, concealed fixings	NY02-DM-13001-**
Premium rimless right-handed close coupled Doc M toilet pack, stainless, concealed fixings	NY02-DM-13002-**
Premium rimless left-handed close coupled Doc M toilet pack, stainless, concealed fixings, TMV3 valve	NY02-DM-13101-**
Premium rimless right-handed close couple Doc M toilet pack, stainless, concealed fixings, TMV3 valve	NY02-DM-13102-**
Premium rimless left-handed close couple Doc M toilet pack, stainless, concealed fixings, TMV3 tap	NY02-DM-13201-**
Premium rimless right-handed close couple Doc M toilet pack, stainless, concealed fixings, TMV3 tap	NY02-DM-13202-**

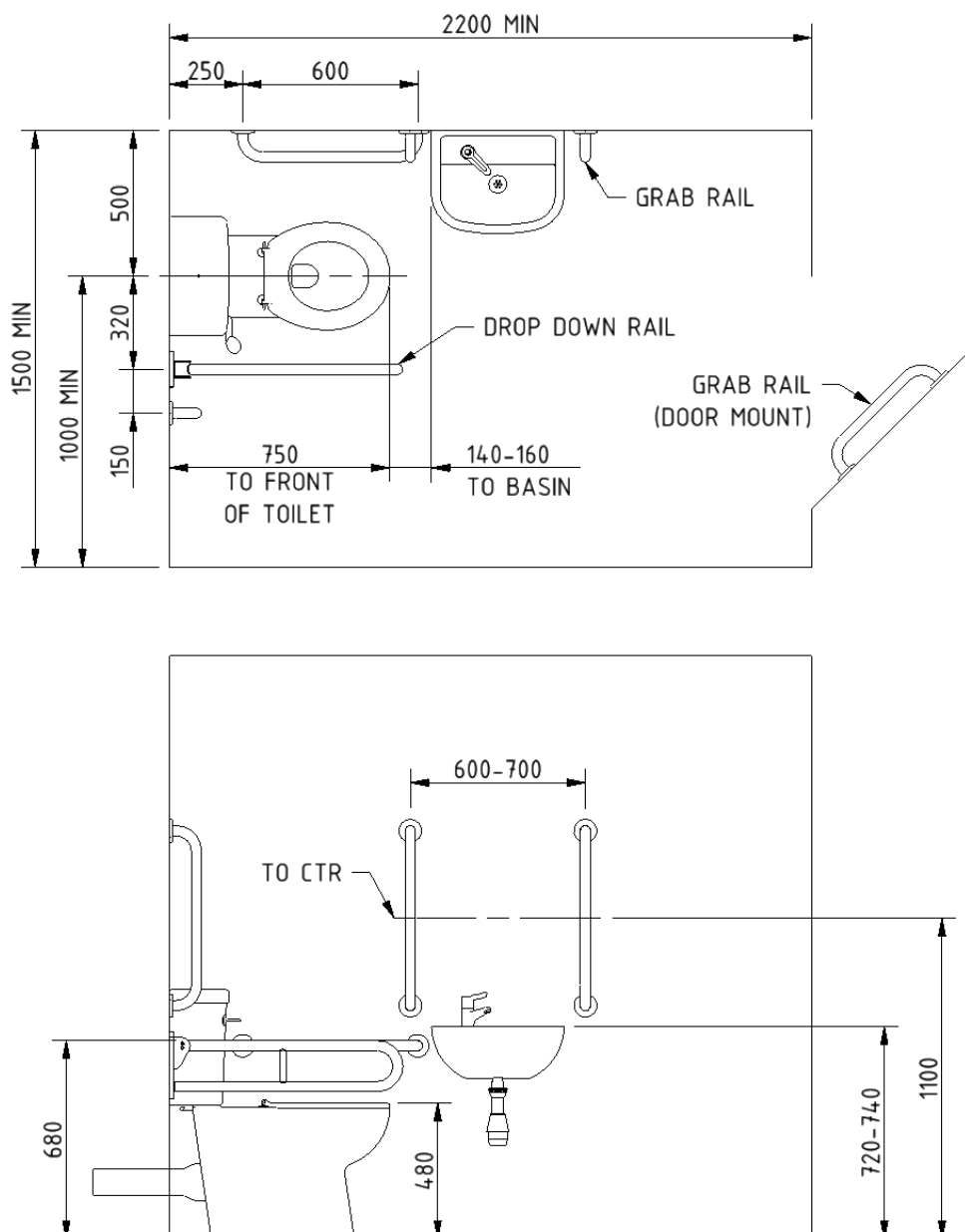
Replace \*\* with 2-character code for chosen finish (Powder Coated / Mechanical).  
e.g., NY02-DM-13001-DB

Need some product advice? Contact our team of product specialists  
+44(0)1642 710 719 | [sales@fitzroyoflondon.com](mailto:sales@fitzroyoflondon.com)  
**[www.fitzroyoflondon.com](http://www.fitzroyoflondon.com)**

### Pack contents

- 4 x 600mm stainless steel grab rails with concealed fixings
- 1 x 450mm stainless steel grab rail with concealed fixings
- 1 x 800mm stainless steel hinged support rail with concealed fixings
- 1 x Close coupled premium rimless Doc M pan
- 1 x Close coupled cistern with lockable lid
- 1 x Close coupled cistern fitting pack with basin waste and Doc M spatula lever
- 1 x Ring only toilet seat
- 1 x One tap hole basin (either left or right hand)
- 1 x Sequential basin mixer tap (optional thermostatic mixer tap - NY02-DM-1320x-\*\* only)
- 1 x TMV3 Valve (NY02-DM-1310x-\*\* only)

### Dimensions (mm)



## Premium rimless close coupled Doc M pan



### Product details

<b>Warranty:</b>	Lifetime
<b>Max load:</b>	400kg
<b>Doc M compliant:</b>	Yes
<b>Suitable for wet areas:</b>	Yes

### Features

- Rimless design for ease of cleaning
- Extended projection to aid compliance with Part M of the Building Regulations
- UKCA and CE compliant
- Comfort height to allow easier side transfer from wheelchair

### Finish options



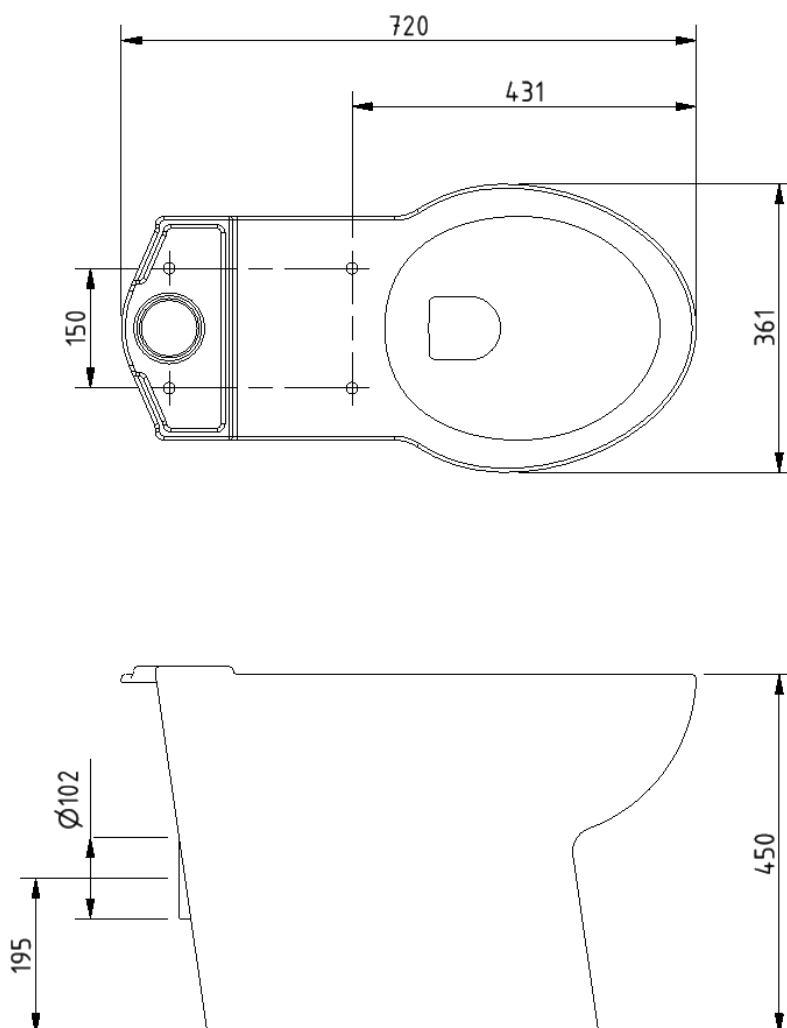
### Product description

Premium rimless close coupled Doc M pan

### Product code

NY02-SW-13000-WH

**Dimensions (mm)**



Close coupled cistern with lockable lid for premium rimless Doc M pan



#### Product details

Warranty:	Lifetime
Max load:	N/A
Doc M compliant:	Yes
Suitable for wet areas:	Yes

#### Features

- Complies with Part M of the Building Regulations
- UKCA & CE compliant
- Suitable for front lever
- Bottom inlet
- Universal - either left or right handed
- Lockable lid

#### Finish options



**WH**  
White

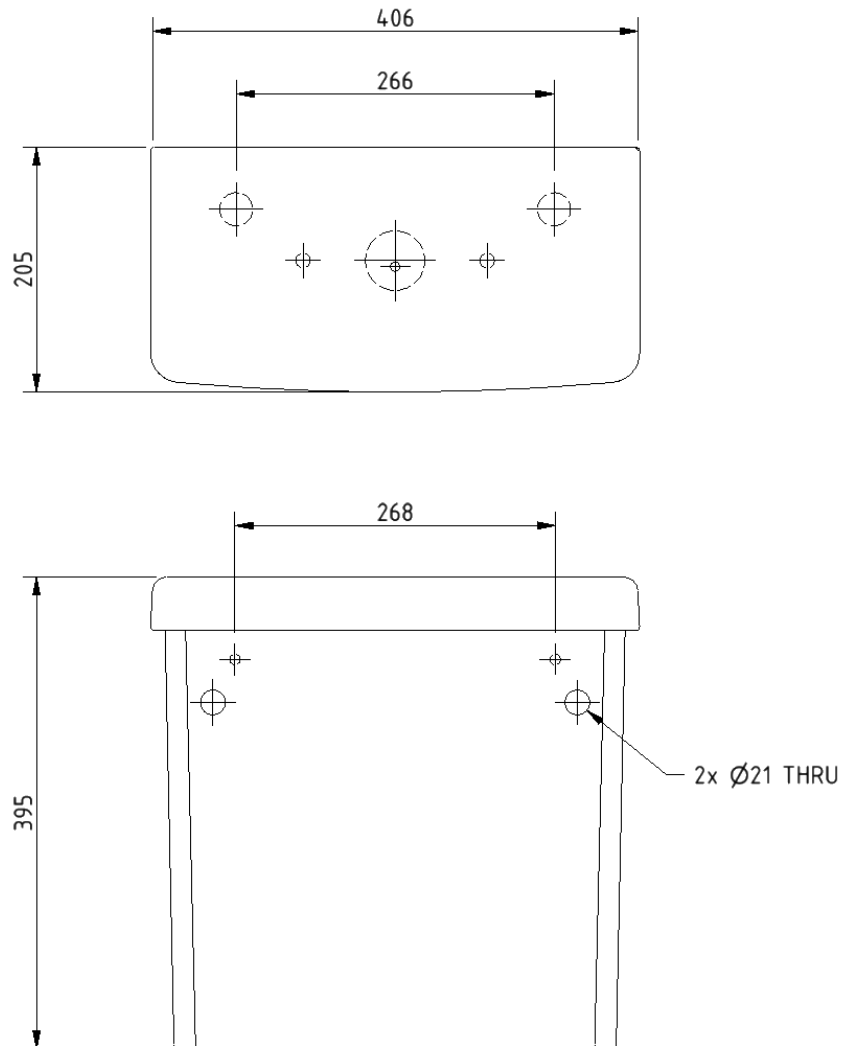
#### Product description

Close coupled cistern with lockable lid for premium rimless Doc M pan

#### Product code

NY02-SW-21090-WH

# Dimensions (mm)



## Toilet seat, ring only, stainless steel pillar hinge



### Product details

**Warranty:** 2 years

**Max load:** 150 kg

**Doc M compliant:** Yes

**Suitable for wet areas:** Yes

### Features

- Complies with Part M of the Building Regulations
- Anti-bacterial, strong and durable Duroplast seat
- Ergonomic and comfortable shape
- Stainless steel hinge (bottom fix as standard)  
Additional hinge pack to convert to top fix: NY-TOPFIXHINGE
- Adjustable locating buffers
- Fits close coupled, low level, back to wall and wall hung pans

### Finish options



**DB**  
Dark Blue (RAL 5011)



**DG**  
Dark Grey (RAL 7016)



**GY**  
Grey (RAL 7005)



**WH**  
White (RAL 9016)

### Product description

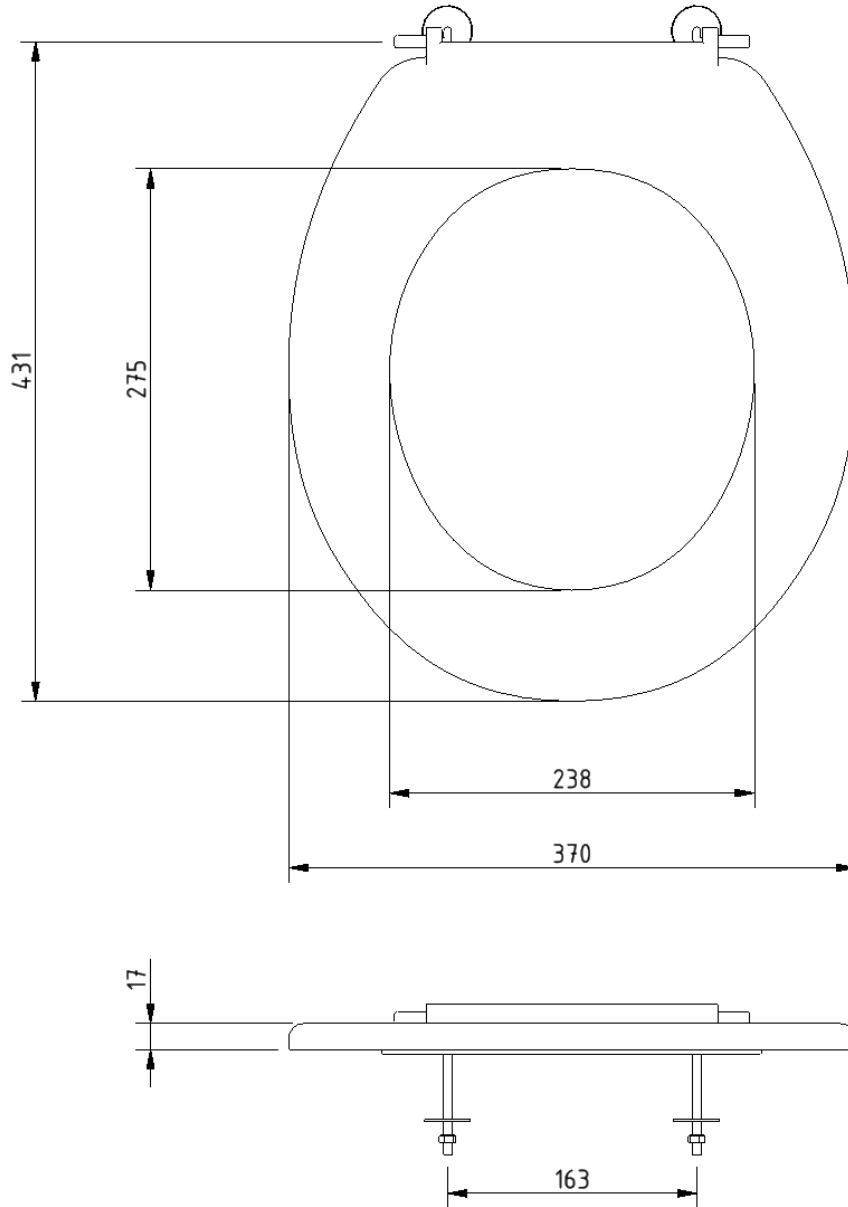
Toilet seat, ring only, stainless steel pillar hinge

### Product code

260015/\*\*

Replace \*\* with 2-character short code for chosen finish.  
e.g., 260015/DB

Dimensions (mm)





## Top fix toilet seat hinge



### Product details

**Warranty:** 2 years

**Max load:** N/A

**Doc M compliant:** N/A

**Suitable for wet areas:** Yes

### Features

- Toilet seat hinge for use with premium rimless sanitary ware

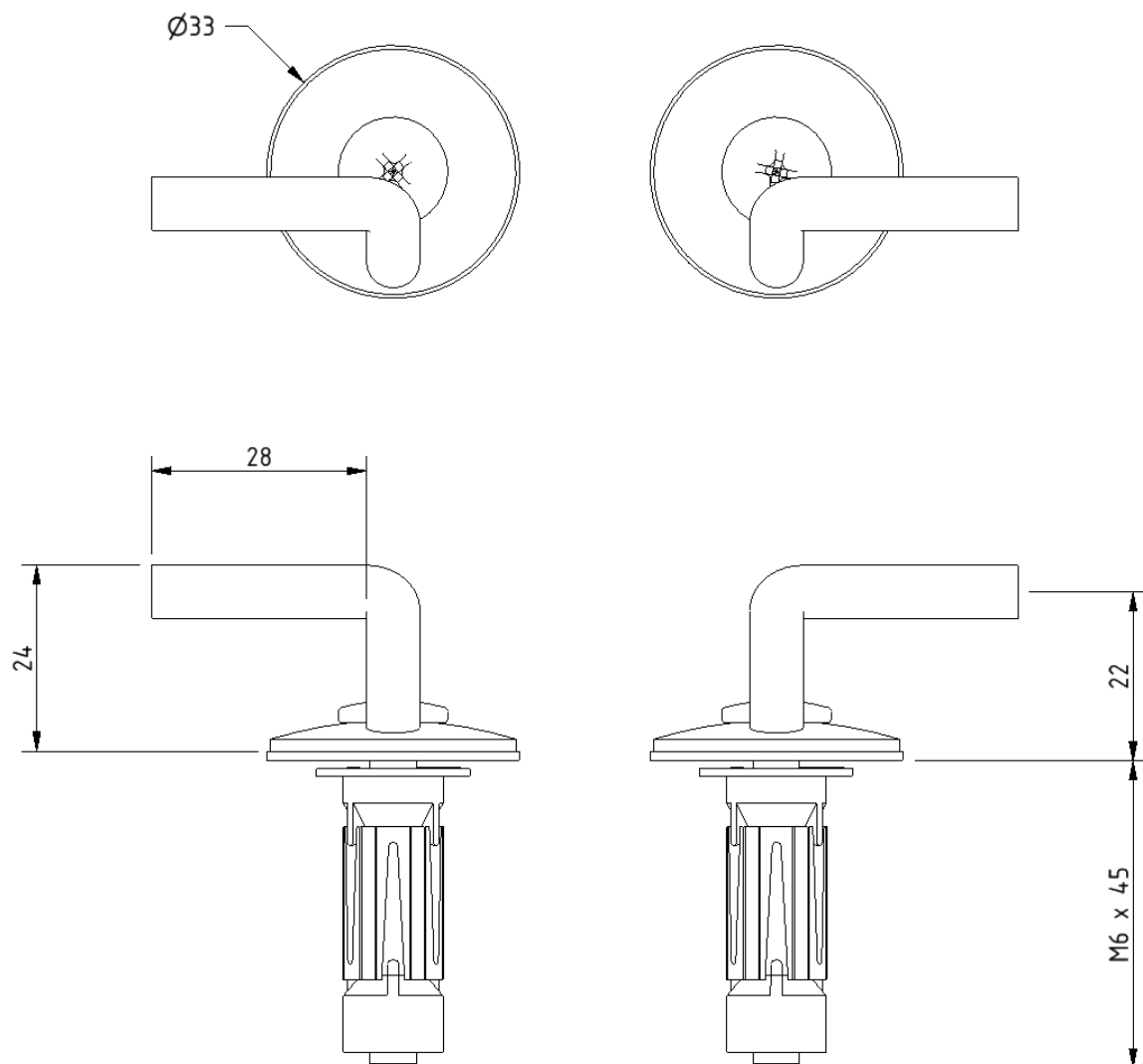
### Product description

Top fix toilet seat hinge

### Product code

NY-TOPFIXHINGE

Dimensions (mm)



## Premium Doc M basin



### Product details

<b>Warranty:</b>	Lifetime
<b>Max load:</b>	N/A
<b>Doc M compliant:</b>	Yes
<b>Suitable for wet areas:</b>	Yes

### Features

- Multiple tap hole configurations available removing the need for blanking caps
- Complies with Part M of the Building Regulations
- No overflow

Does **NOT** come with wall fixings (P-000247-X00X)

## Finish options



**WH**  
White

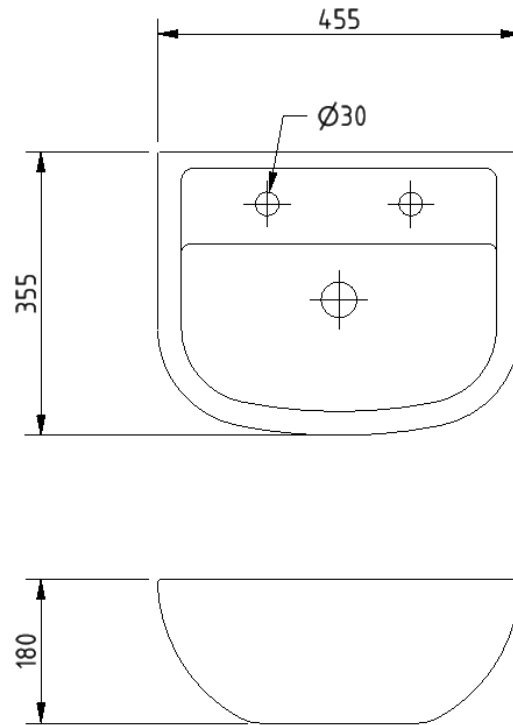
## Product description

Premium Doc M basin, two tap holes, no overflow, white  
 Premium Doc M basin, left handed tap hole, no overflow, white  
 Premium Doc M basin, right handed tap hole, no overflow, white  
 Premium Doc M basin, central tap hole, no overflow, white

## Product code

NY02-SW-00100-WH  
 NY02-SW-00101-WH  
 NY02-SW-00102-WH  
 NY02-SW-00103-WH

Dimensions (mm)



FOR TAP HOLE POSITION DIMENSIONS SEE PRODUCT SPECIFIC MARKETING DRAWING

## Polished chrome sequential basin mixer tap



### Product details

<b>Warranty:</b>	2 years
<b>Max load:</b>	N/A
<b>Doc M compliant:</b>	Yes
<b>Suitable for wet areas:</b>	Yes
<b>Flexi tap tail connection (to tap body):</b>	M10 thread
<b>Flexi tap tail (onward connection):</b>	½ inch BSP

### Features

- Reg 4 certified (WRAS, NSF, Kiwa, etc.)
- Easy operation for users with limited dexterity
- Cold start

### Finish options



**CP**  
Polished Chrome

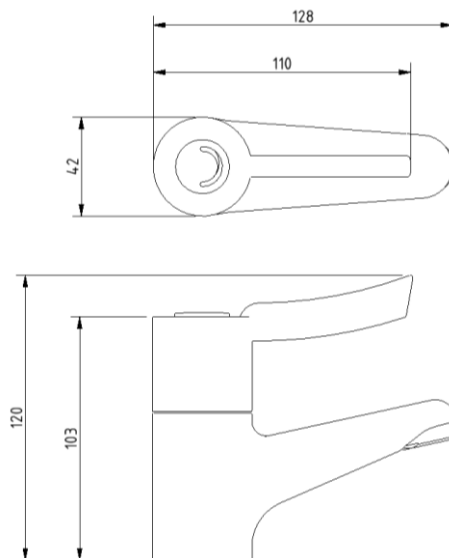
### Product description

Sequential basin mixer tap, polished chrome

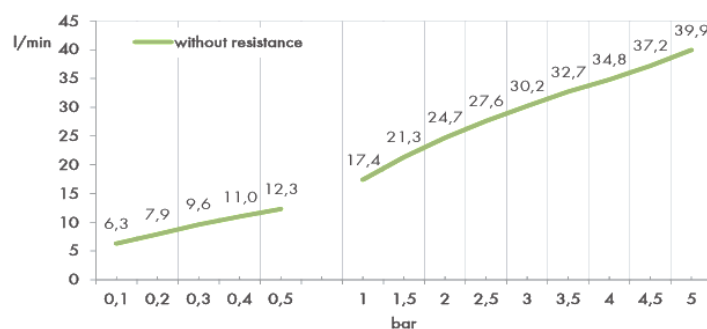
### Product code

BPLMON

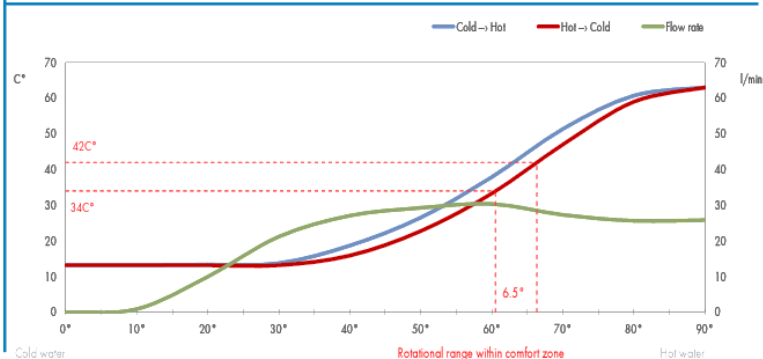
## Dimensions (mm)



## FLOW RATE CURVE



## FLOW RATE & HYSTERESIS CURVES



## Basin waste with stainless steel grid



### Product details

**Warranty:** 2 years

**Max load:** N/A

**Doc M compliant:** Yes

**Suitable for wet areas:** Yes

### Features

- Slotted type for use with basins without overflow
- Manufactured from high quality materials
- Quick and simple installation

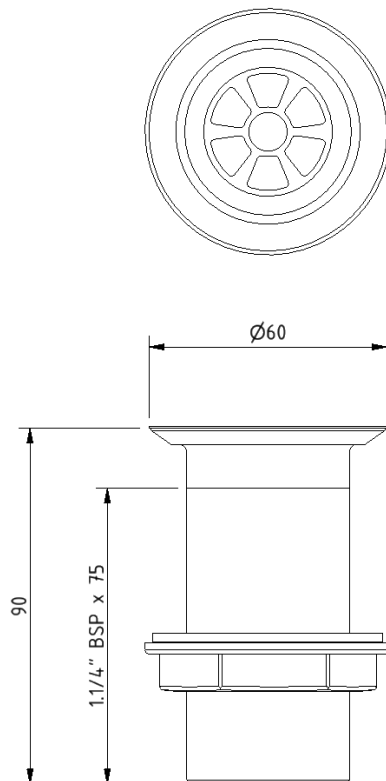
### Product description

Basin waste, plastic body, white, stainless grid, unslotted, 1-1/4" BSP thread

### Product code

P-000245-X00X

### Dimensions (mm)



Fitzroy of London may occasionally need to change specification of products and/or kit contents and reserves the right to do so. We strive to keep our documentation up to date; however, we cannot guarantee this. We accept no liability for any information given on this data sheet.

Need some product advice? Contact our team of product specialists  
+44(0)1642 710 719 | [sales@fitzroyoflondon.com](mailto:sales@fitzroyoflondon.com)  
[www.fitzroyoflondon.com](http://www.fitzroyoflondon.com)

## Stainless steel grab rail with concealed fixings, 35mm diameter tube



### Product details

<b>Warranty:</b>	5 Years
<b>Max load:</b>	185 kg
<b>Doc M compliant:</b>	Yes
<b>Suitable for wet areas:</b>	Yes

### Features

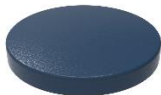
- Stainless steel construction
- Durable powder coated finish
- Concealed fixing

### Finish options

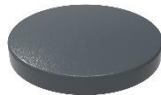
#### Powder coated



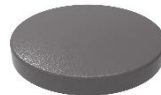
**WH**  
White (RAL 9016)



**DB**  
Dark Blue (RAL 5011)



**DG**  
Dark Grey (RAL 7016)



**GY**  
Grey (RAL 7005)

### Product description

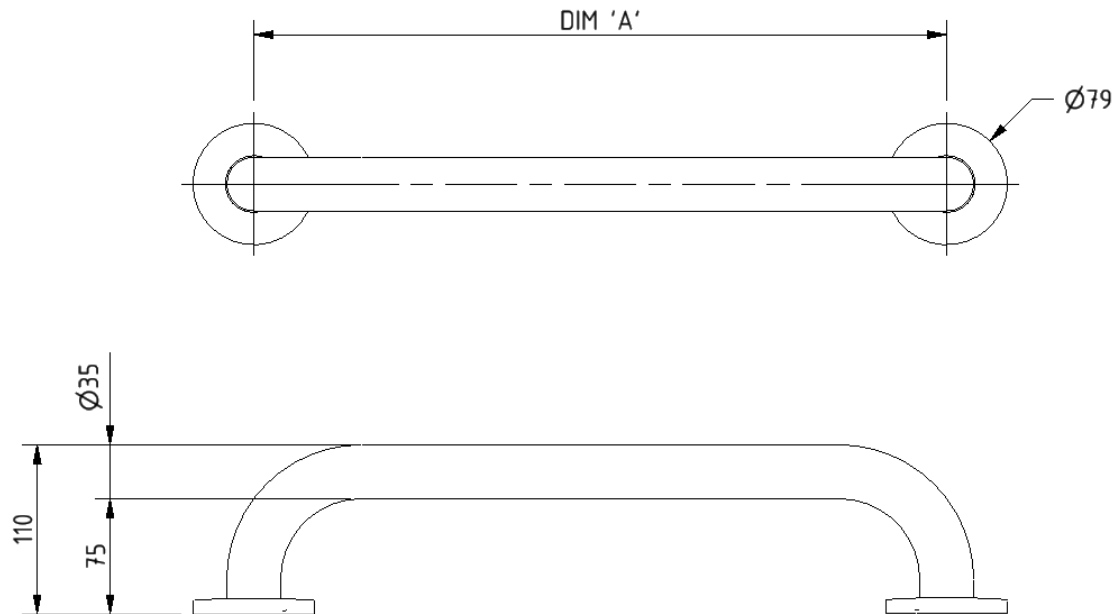
### Product code

Grab rail, stainless steel, concealed fixings, 35mm diameter, 300mm	210130/**
Grab rail, stainless steel, concealed fixings, 35mm diameter, 450mm	210145/**
Grab rail, stainless steel, concealed fixings, 35mm diameter, 600mm	210160/**
Grab rail, stainless steel, concealed fixings, 35mm diameter, 900mm	210190/**

Replace \*\* with 2-character short code for chosen finish.  
e.g., 210130/WH

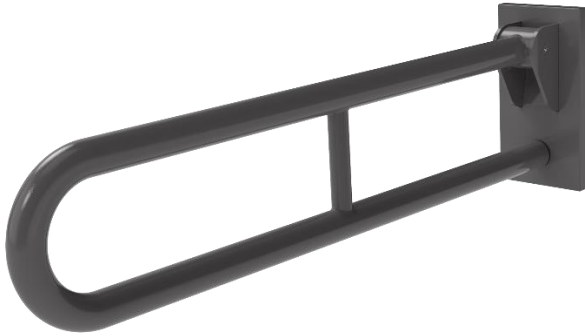


Dimensions (mm)



PRODUCT CODE	210130/**	210145/**	210160/**	210190/**
DIM 'A'	300	450	600	900

## Stainless steel friction hinged support rail with concealed fixings, 800mm



### Product details

**Warranty:** 5 years

**Max load:** 120 kg

**Doc M compliant:** Yes

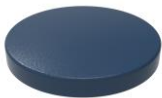
**Suitable for wet areas:** Yes

### Features

- Complies with Part M of the Building Regulations
- Premium friction folding mechanism
- Stainless steel construction
- Concealed wall fixings

### Finish options

#### Powder Coated



**DB**  
Dark Blue (RAL 5011)



**DG**  
Dark Grey (RAL 7016)



**GY**  
Grey (RAL 7005)



**WH**  
White (RAL 9016)

#### Mechanical



**SP**  
Polished Stainless Steel



**SS**  
Satin Stainless Steel

### Product description

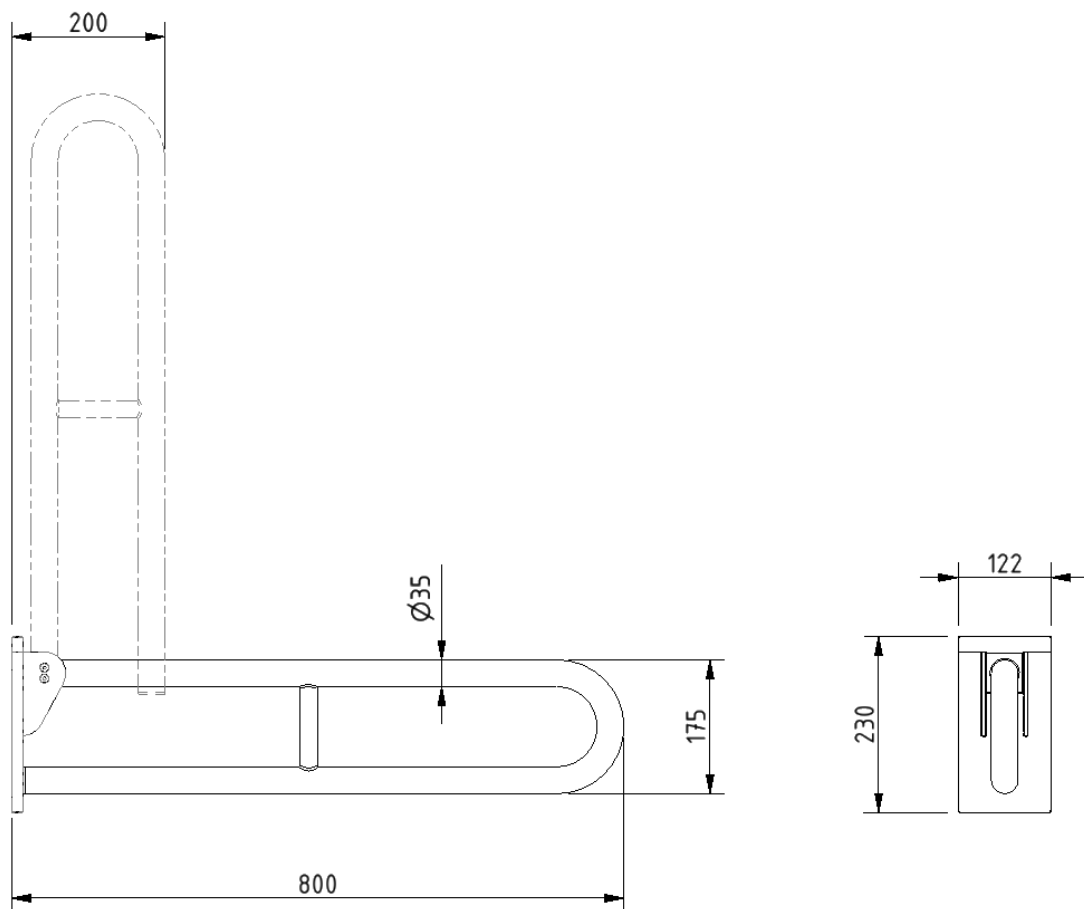
Friction hinged rail, stainless steel, concealed fixing, 800mm

### Product code

105SC-\*\*

Replace \*\* with 2-character short code for chosen finish (Powder Coated / Mechanical).  
e.g., 105SC/DB

Dimensions (mm)



## TMV3 inline thermostatic mixing valve



### Product details

**Warranty:** 2 years

**Max load:** N/A

**Doc M compliant:** Yes

**Suitable for wet areas:** Yes

### Features

- TMV3 approved & Reg 4 Certified (WRAS, NSF, Kiwa, etc.)
- Complies with Part M of the Building Regulations
- Building Regulations Part G compliant
- Highly resistant to scaling
- Anti-tamper proof head
- Complies with HTM04-01 D08
- TMV2 approved & complies with BS EN 1111 & BS EN 1287:2017
- Integral check valves & strainers

### Finish options



**CP**  
Polished Chrome

### Product description

TMV3 inline thermostatic mixing valve - 15mm

### Product code

BPLTMV

Dimensions (mm)

