

## Low level Doc M toilet pack with steel exposed fixing grab rails



### Product details

<b>Warranty:</b>	See individual products
<b>Max load:</b>	See individual products
<b>Doc M compliant:</b>	Yes
<b>Suitable for wet areas:</b>	No

### Features

- Complies with Part M of the Building Regulations
- Inlet valve and syphon Reg 4 Certified (WRAS, NSF, Kiwa, etc.)
- Optional TMV3 Valve (DMLL/\*\*)
- Universal - suitable for left or right handed transfer
- Simple one box solution

### Finish options

#### Powder Coated



**DB**  
Dark Blue (RAL 5011)



**DG**  
Dark Grey (RAL 7016)



**GY**  
Grey (RAL 7006)



**WH**  
White (RAL 9016)

### Product description

Low level Doc M toilet pack, steel, exposed fixings

Low level Doc M toilet pack, steel, exposed fixings, TMV3 valve

### Product code

DM215K/\*\*

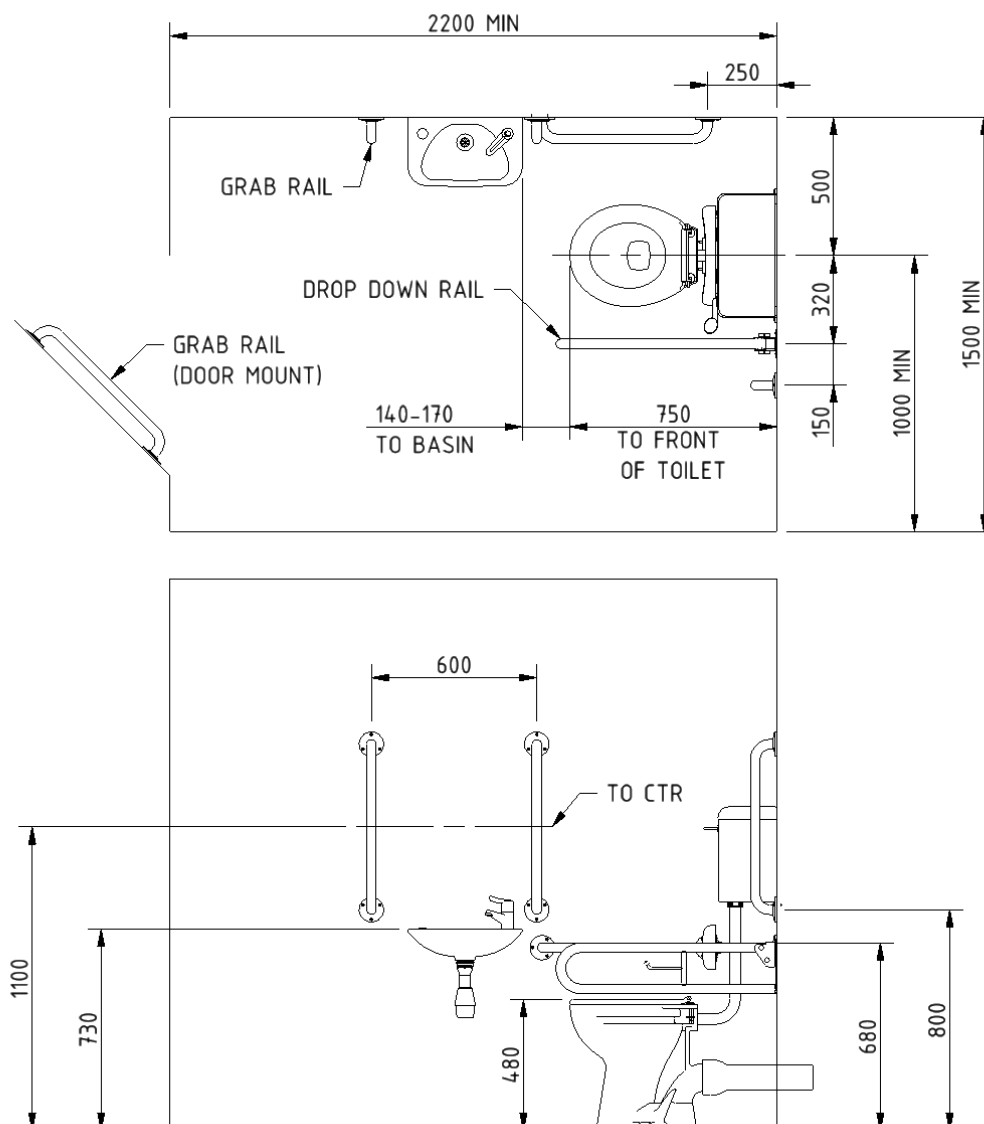
DMLL/\*\*

Replace \*\* with 2-character short code for chosen finish (Powder Coated).  
e.g., DM215K/DB

### Pack contents

- 5 x 600mm coated steel grab rails with exposed fixings
- 1 x 800mm coated steel hinged support rail with toilet roll holder
- 1 x 270mm coated steel back rest rail and pad with exposed fixings
- 1 x Low level box rim Doc M pan
- 1 x Low level cistern with fittings, flush pipe, and Doc M spatula lever
- 1 x Ring only toilet seat
- 1 x Compact finger rinse Doc M basin
- 1 x Sequential basin mixer tap
- 1 x Tap hole stopper
- 1 x Basin waste
- 1 x TMV3 Valve (DMLL/\*\* only)

### Dimensions (mm)



Fitzroy of London may occasionally need to change specification of products and/or kit contents and reserves the right to do so. We strive to keep our documentation up to date; however, we cannot guarantee this. We accept no liability for any information given on this data sheet.

## Low level box rim Doc M pan



### Product details

**Warranty:** Lifetime

**Max load:** 400 kg

**Doc M compliant:** Yes

**Suitable for wet areas:** Yes

### Features

- Complies with Part M of the Building Regulations
- UKCA and CE compliant
- Comfort height to allow easier side transfer from wheelchair

### Finish options



**WH**  
White (RAL 9016)

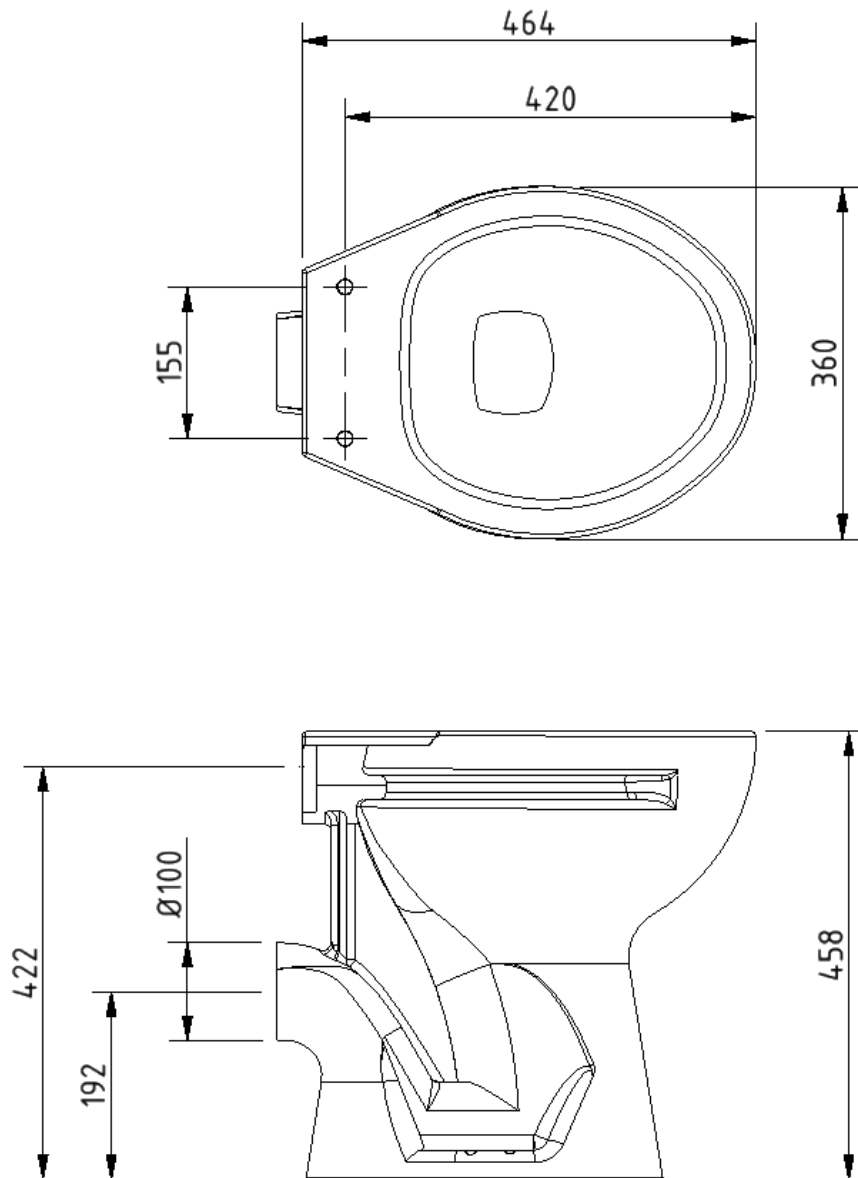
### Product description

Low level box rim Doc M pan, white

### Product code

B-BWPANLL-1

Dimensions (mm)



## Toilet seat, ring only, stainless steel pillar hinge



### Product details

**Warranty:** 2 years

**Max load:** 150 kg

**Doc M compliant:** Yes

**Suitable for wet areas:** Yes

### Features

- Complies with Part M of the Building Regulations
- Anti-bacterial, strong and durable Duroplast seat
- Ergonomic and comfortable shape
- Stainless steel hinge (bottom fix as standard)  
Additional hinge pack to convert to top fix: NY-TOPFIXHINGE
- Adjustable locating buffers
- Fits close coupled, low level, back to wall and wall hung pans

### Finish options



**DB**  
Dark Blue (RAL 5011)



**DG**  
Dark Grey (RAL 7016)



**GY**  
Grey (RAL 7005)



**WH**  
White (RAL 9016)

### Product description

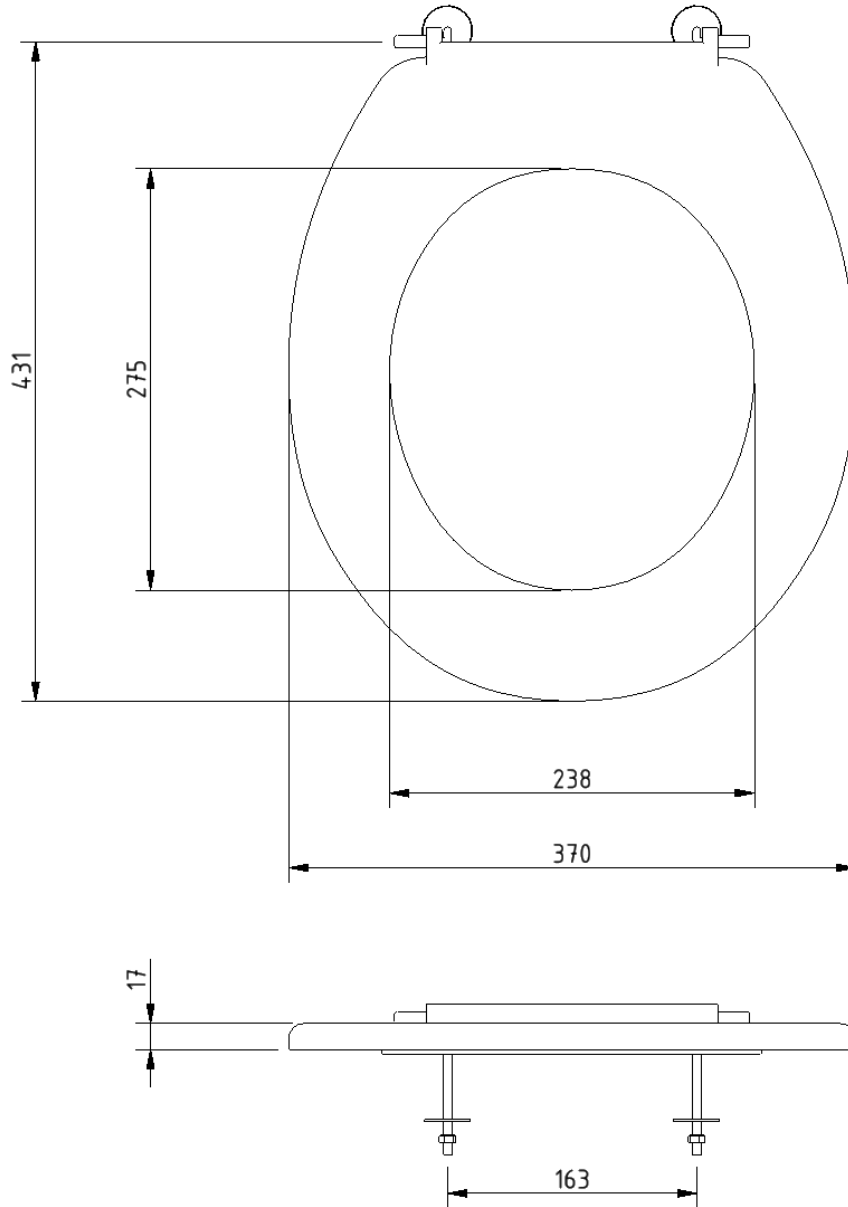
Toilet seat, ring only, stainless steel pillar hinge

### Product code

260015/\*\*

Replace \*\* with 2-character short code for chosen finish.  
e.g., 260015/DB

Dimensions (mm)



## Low level cistern for box rim pan



### Product details

<b>Warranty:</b>	Lifetime
<b>Max load:</b>	N/A
<b>Doc M compliant:</b>	Yes
<b>Suitable for wet areas:</b>	Yes

### Features

- Complies with Part M of the Building Regulations
- UKCA & CE compliant
- Suitable for front lever
- Bottom inlet
- Universal - either left or right handed
- Lockable lid option

### Finish options



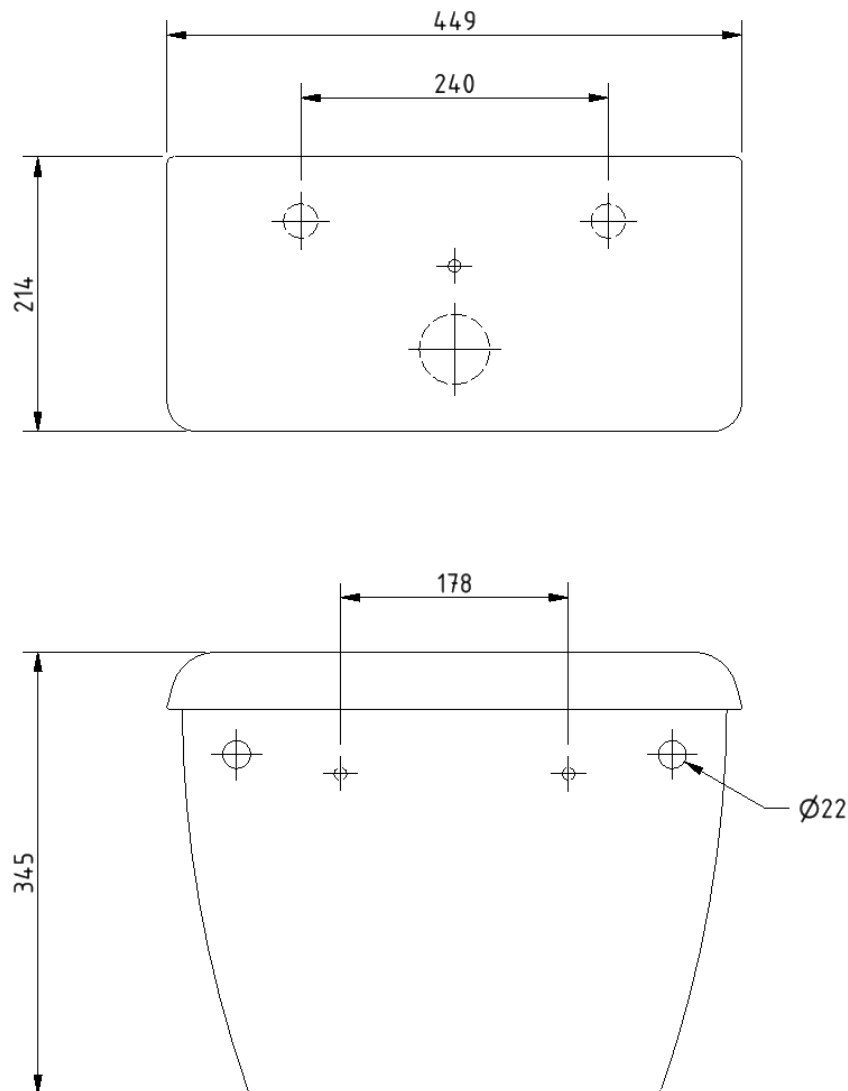
**WH**  
White (RAL 9016)

### Product description

### Product code

Low level cistern for box rim pan	NY01-SW-21090-WH
Low level cistern with lockable lid for box rim pan	NY01-SW-21099-WH

Dimensions (mm)





## Cistern fitting pack for low level box rim pan



### Product details

Warranty:	2 years
Max rated load:	n/a
Doc M compliant:	Yes
Suitable for wet areas:	Yes

### Features

- Inlet valve and syphon Reg 4 Certified (WRAS, NSF, Kiwa, etc.)
- Can provide both full and half flush
- Doc M spatula lever to provide easy operation for users with limited dexterity
- 6 litre flush

### Product description

Cistern fitting pack for low level box rim pan, includes lever and basin waste

### Product code

SANLLPK-1

### Pack contents

- 1 x Inlet valve
- 1 x Syphon
- 1 x Doc M spatula lever
- 1 x flush pipe
- 2 x Cistern blanking plugs
- 1 x Close coupled fixing bolts
- 1 x Tap hole stopper
- 1 x Basin waste

### Disclaimer

NYMAS Group makes every effort to ensure that the information provided on this data sheet is correct. However, we cannot guarantee this, and accept no liability for any information or advice given on this data sheet.

## Compact finger rinse Doc M basin



### Product details

**Warranty:** Lifetime

**Max load:** N/A

**Doc M compliant:** Yes

**Suitable for wet areas:** Yes

### Features

- Two tap holes for left or right-handed configuration
- Compact design to maximise space for a wheelchair user
- Complies with Part M of the Building Regulations
- Contemporary design
- No overflow
- CE Marked, compliant sanitary ware
- Wall fixings included

### Finish options



**WH**  
White (RAL 9016)

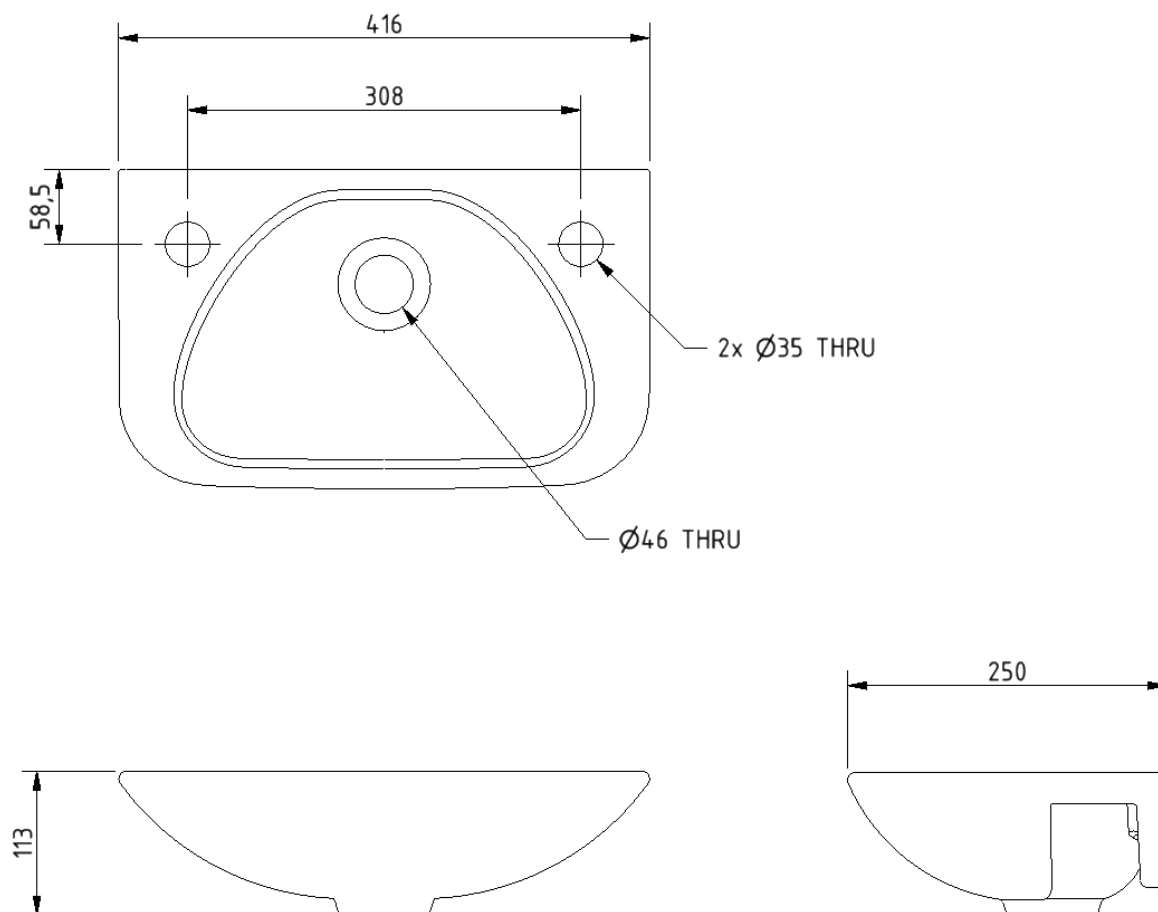
### Product description

Compact finger rinse Doc M basin, two tap holes, no overflow, white (RAL 9016)

### Product code

F20-BA01-CER-WH

Dimensions (mm)



## Polished chrome sequential basin mixer tap



### Product details

<b>Warranty:</b>	2 years
<b>Max load:</b>	N/A
<b>Doc M compliant:</b>	Yes
<b>Suitable for wet areas:</b>	Yes
<b>Flexi tap tail connection (to tap body):</b>	M10 thread
<b>Flexi tap tail (onward connection):</b>	½ inch BSP

### Features

- Reg 4 certified (WRAS, NSF, Kiwa, etc.)
- Easy operation for users with limited dexterity
- Cold start

### Finish options



**CP**  
Polished Chrome

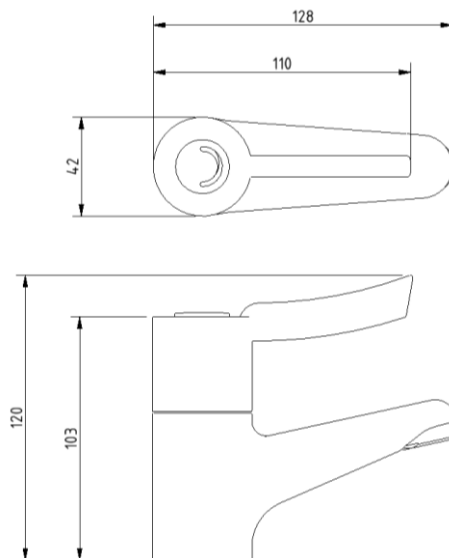
### Product description

Sequential basin mixer tap, polished chrome

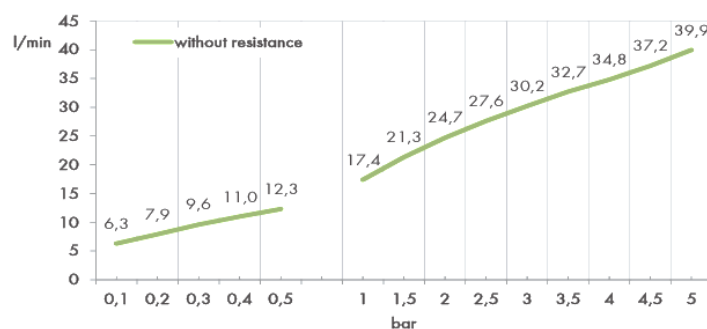
### Product code

BPLMON

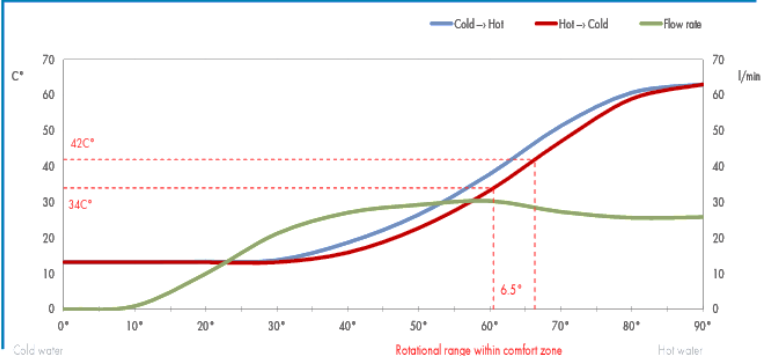
## Dimensions (mm)



## FLOW RATE CURVE



## FLOW RATE & HYSTERESIS CURVES



## Doc M rail only pack with exposed fixing steel grab rails



### Product details

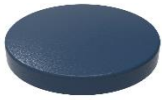
<b>Warranty:</b>	See individual products
<b>Max load:</b>	See individual products
<b>Doc M compliant:</b>	Yes
<b>Suitable for wet areas:</b>	No

### Features

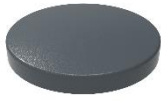
- Complies with Part M of the Building Regulations
- Simple one box solution

### Finish options

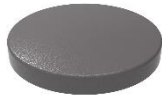
#### Powder Coated



**DB**  
Dark Blue (RAL 5011)



**DG**  
Dark Grey (RAL 7016)



**GY**  
Grey (RAL 7006)



**WH**  
White (RAL 9016)

### Product description

Rail only Doc M toilet pack, steel, exposed fixings

### Product code

BCCDMT-0/\*\*

Replace \*\* with 2-character short code for chosen finish (Powder Coated).  
e.g., BCCDMT-0/DB

#### Pack contents

- 5 x 600mm coated steel grab rails with exposed fixings
- 1 x 800mm coated steel hinged support rail with toilet roll holder

#### Dimensions (mm)

See individual products

## Steel back rest with white pad, 270mm projection



### Product details

**Warranty:** 2 years

**Max load:** N/A

**Doc M compliant:** Yes

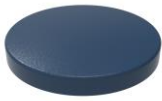
**Suitable for wet areas:** No

### Features

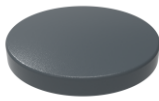
- Complies with Part M of the Building Regulations
- Robust steel construction
- Durable wipe clean polyurethane pad
- Closed cell polyurethane construction for maximum hygiene and comfort
- Saddle clips for fixing pad to rail

### Finish options

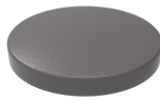
#### Powder Coated



**DB**  
Dark Blue (RAL 5011)



**DG**  
Dark Grey (RAL 7016)



**GY**  
Grey (RAL 7005)



**WH**  
White (RAL 9016)

### Product description

Back rest rail with white pad, steel, 270mm projection, exposed fixings

### Product code

BR-270/\*\*

Replace \*\* with 2-character short code for chosen finish (Powder Coated).  
e.g., BR-270/DB



Dimensions (mm)

