

## Premium rimless back to wall Doc M toilet pack



### Product details

<b>Warranty:</b>	See individual products
<b>Max load:</b>	See individual products
<b>Doc M compliant:</b>	Yes
<b>Suitable for wet areas:</b>	Yes

### Features

- Complies with Part M of the Building Regulations
- Rimless design pan for ease of cleaning
- Inlet valve and syphon Reg 4 Certified (WRAS, NSF, Kiwa, etc.)
- Concealed fixing stainless steel grab rails
- Optional TMV3 Valve or TMV3 tap
- Simple one box solution

### Finish options

#### Powder Coated



**DB**  
Dark Blue (RAL 5011)



**DG**  
Dark Grey (RAL 7016)



**GY**  
Grey (RAL 7005)



**WH**  
White (RAL 9016)

#### Mechanical



**SP**  
Polished Stainless Steel



**SS**  
Satin Stainless Steel

### Product description

### Product code

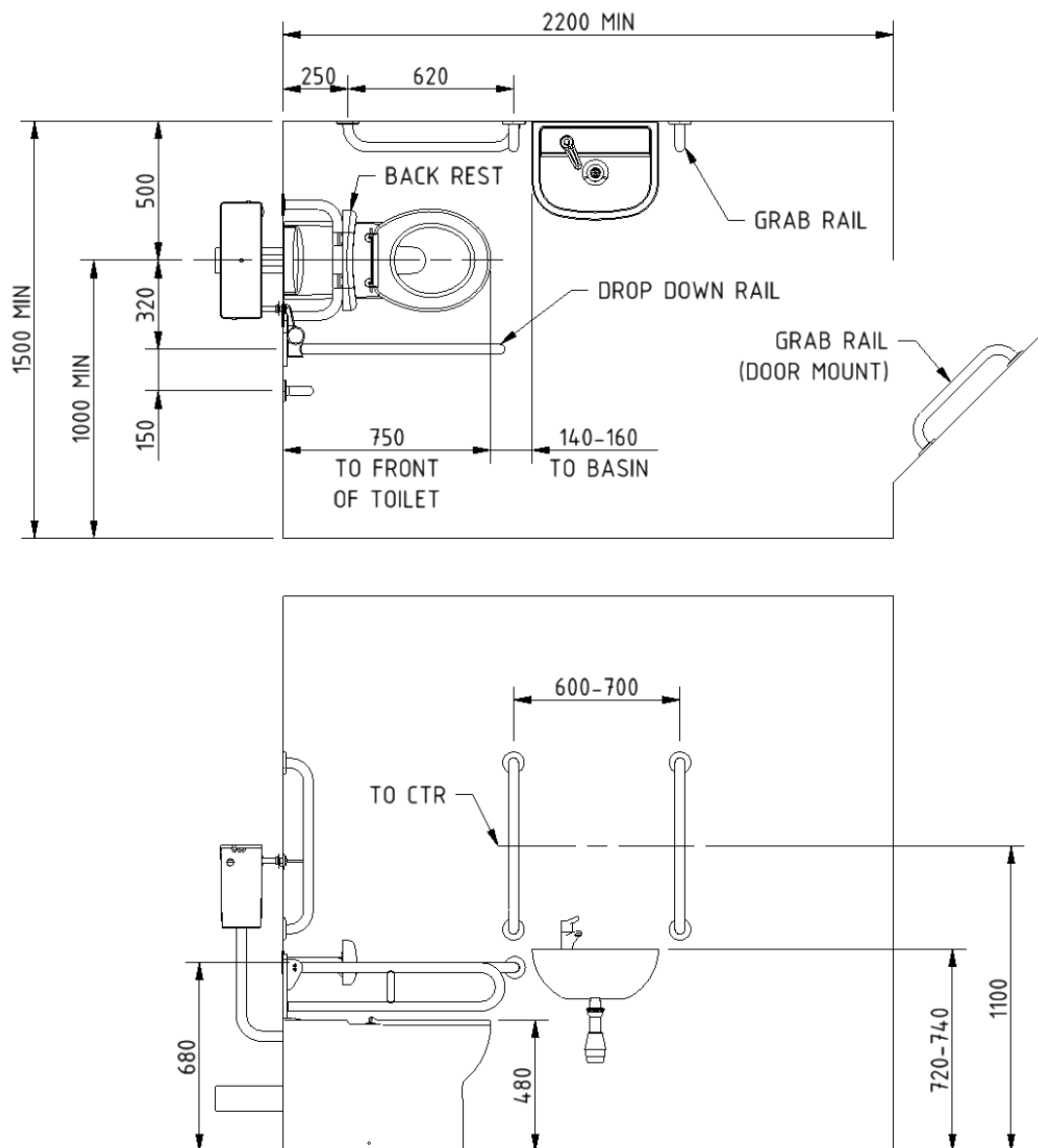
Premium rimless left handed back to wall Doc M toilet pack, SS, concealed fixings	NY02-DM-33001/**
Premium rimless right handed back to wall Doc M toilet pack, SS, concealed fixings	NY02-DM-33002/**
Premium rimless left handed back to wall Doc M toilet pack, SS, concealed fixings, TMV3 valve	NY02-DM-33101/**
Premium rimless right handed back to wall Doc M toilet pack, SS, concealed fixings, TMV3 valve	NY02-DM-33102/**
Premium rimless left handed back to wall Doc M toilet pack, SS, concealed fixings, TMV3 tap	NY02-DM-33201/**
Premium rimless right handed back to wall Doc M toilet pack, SS, concealed fixings, TMV3 tap	NY02-DM-33202/**

Replace \*\* with 2-character code for chosen finish (Powder Coated / Mechanical).  
e.g., NY02-DM-33001/DB

### Pack contents

- 4 x 600mm stainless steel grab rails with concealed fixings
- 1 x 450mm stainless steel grab rail with concealed fixings
- 1 x 800mm stainless steel hinged support rail
- 1 x 270mm stainless steel back rest rail and pad with concealed fixing
- 1 x Back to wall premium rimless Doc M pan
- 1 x Concealed cistern with fittings, flush pipe, and Doc M concealed cistern spatula lever
- 1 x Ring only toilet seat
- 1 x Left or right handed 1 tap hole basin
- 1 x Sequential basin mixer tap (optional thermostatic mixer tap - NY02-DM-3320x-\*\* only)
- 1 x Basin waste
- 1 x TMV3 valve (NY02-DM-3310x-\*\* only)

### Dimensions (mm)



Fitzroy of London may occasionally need to change specification of products and/or kit contents and reserves the right to do so. We strive to keep our documentation up to date; however, we cannot guarantee this. We accept no liability for any information given on this data sheet.

## Premium rimless back to wall Doc M pan



### Product details

Warranty:	Lifetime
Max load:	400kg
Doc M compliant:	Yes
Suitable for wet areas:	Yes

### Features

- Rimless design for ease of cleaning
- Extended projection to aid compliance with Part M of the Building Regulations
- UKCA and CE compliant
- Comfort height to allow easier side transfer from wheelchair

### Finish options



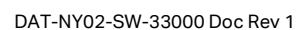
**WH**  
White

### Product description

Premium rimless back to wall Doc M pan

### Product code

NY02-SW-33000-WH



## Toilet seat, ring only, stainless steel pillar hinge



### Product details

**Warranty:** 2 years

**Max load:** 150 kg

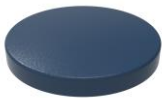
**Doc M compliant:** Yes

**Suitable for wet areas:** Yes

### Features

- Complies with Part M of the Building Regulations
- Anti-bacterial, strong and durable Duroplast seat
- Ergonomic and comfortable shape
- Stainless steel hinge (bottom fix as standard)  
Additional hinge pack to convert to top fix: NY-TOPFIXHINGE
- Adjustable locating buffers
- Fits close coupled, low level, back to wall and wall hung pans

### Finish options



**DB**  
Dark Blue (RAL 5011)



**DG**  
Dark Grey (RAL 7016)



**GY**  
Grey (RAL 7005)



**WH**  
White (RAL 9016)

### Product description

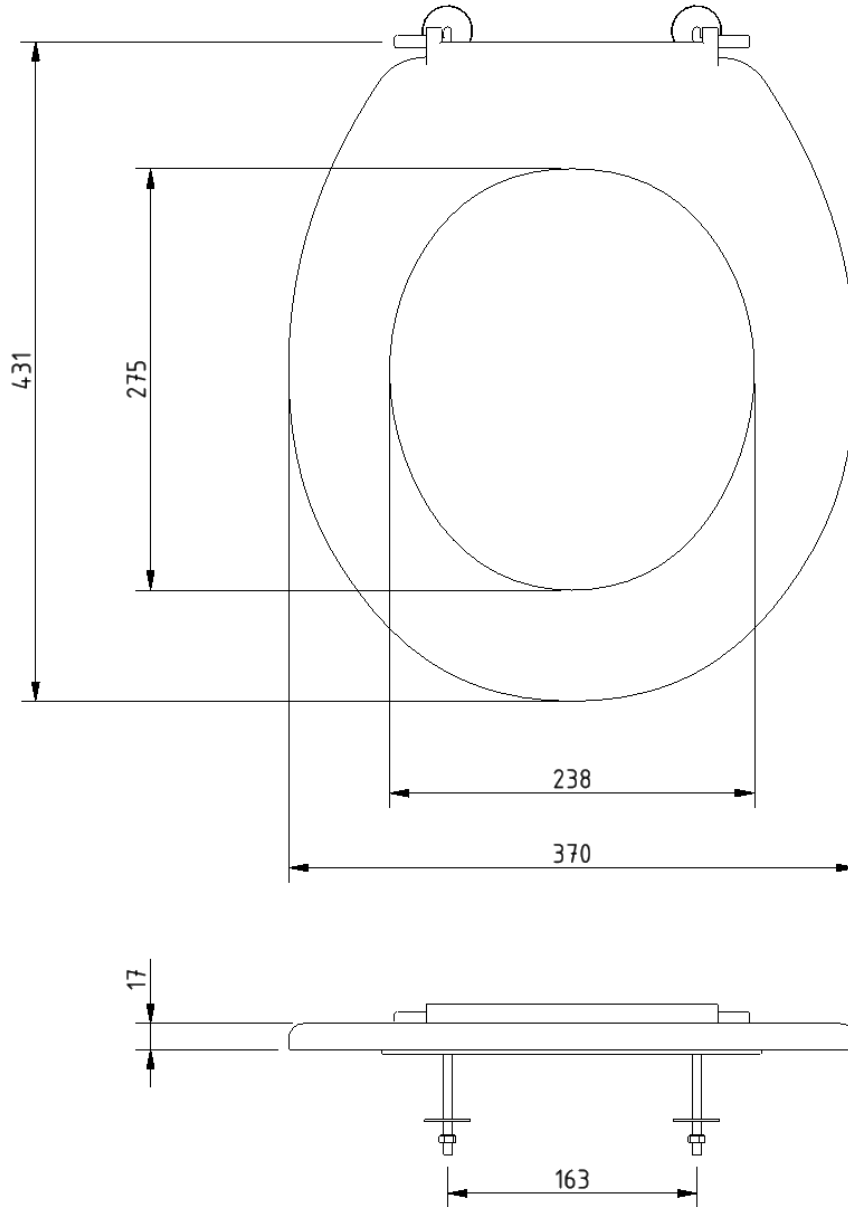
Toilet seat, ring only, stainless steel pillar hinge

### Product code

260015/\*\*

Replace \*\* with 2-character short code for chosen finish.  
e.g., 260015/DB

Dimensions (mm)



## Concealed cistern and fittings



### Product details

**Warranty:** 2 years

**Max load:** N/A

**Doc M compliant:** N/A

**Suitable for wet areas:** Yes

### Features

- Syphon and inlet valve Reg 4 Certified (WRAS, NSF, Kiwa, etc.)
- Top access
- 6 litre flush
- Internal / external overflow warning
- High density polystyrene construction

Does not come with flush lever or flush pipe

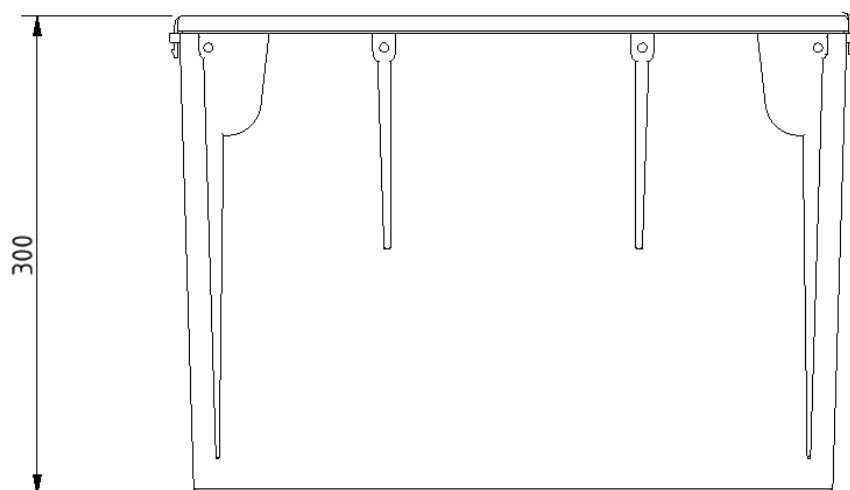
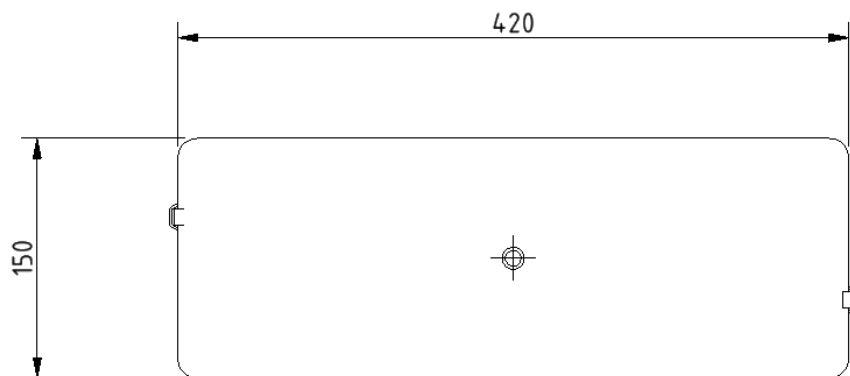
### Product description

Concealed cistern and fittings, no lever or flush pipe

### Product code

B-CISTHIDE

Dimensions (mm)





## Concealed cistern spatula lever



### Product details

**Warranty:** 2 years

**Max load:** N/A

**Doc M compliant:** Yes

**Suitable for wet areas:** Yes

### Features

- Complies with Part M of the Building Regulations
- Easy operation for users with limited dexterity
- For use with concealed cisterns

### Finish options

#### Powder Coated



**CP**  
Polished Chrome

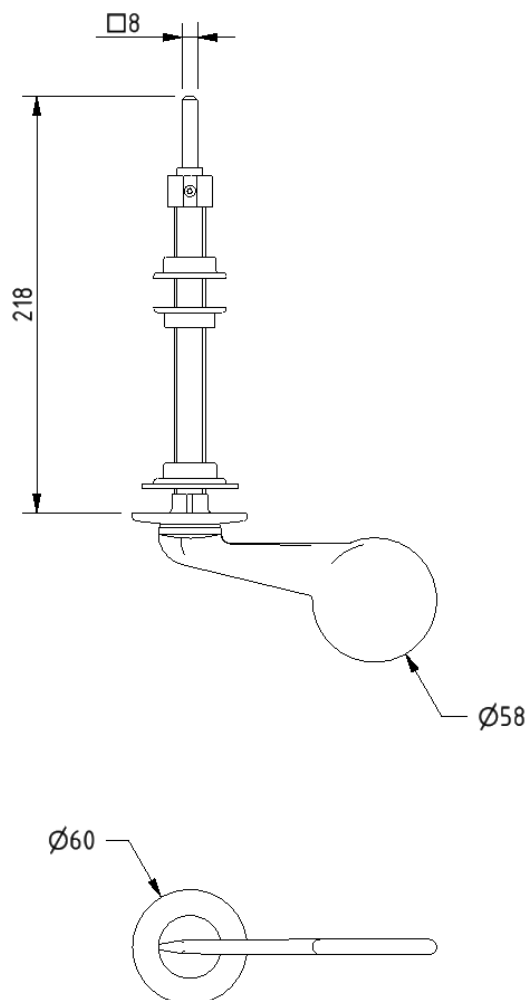
### Product description

Concealed cistern spatula lever, 215mm spindle, polished chrome

### Product code

P-000243-X00X

Dimensions (mm)



## Premium Doc M basin



### Product details

<b>Warranty:</b>	Lifetime
<b>Max load:</b>	N/A
<b>Doc M compliant:</b>	Yes
<b>Suitable for wet areas:</b>	Yes

### Features

- Multiple tap hole configurations available removing the need for blanking caps
- Complies with Part M of the Building Regulations
- No overflow

Does **NOT** come with wall fixings (P-000247-X00X)

## Finish options



**WH**  
White

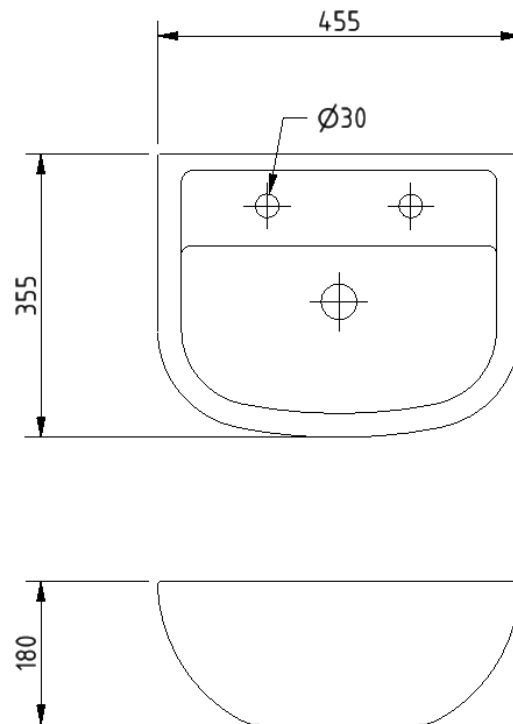
## Product description

Premium Doc M basin, two tap holes, no overflow, white  
 Premium Doc M basin, left handed tap hole, no overflow, white  
 Premium Doc M basin, right handed tap hole, no overflow, white  
 Premium Doc M basin, central tap hole, no overflow, white

## Product code

NY02-SW-00100-WH  
 NY02-SW-00101-WH  
 NY02-SW-00102-WH  
 NY02-SW-00103-WH

**Dimensions (mm)**



FOR TAP HOLE POSITION DIMENSIONS SEE PRODUCT SPECIFIC MARKETING DRAWING

## Polished chrome sequential basin mixer tap



### Product details

<b>Warranty:</b>	2 years
<b>Max load:</b>	N/A
<b>Doc M compliant:</b>	Yes
<b>Suitable for wet areas:</b>	Yes
<b>Flexi tap tail connection (to tap body):</b>	M10 thread
<b>Flexi tap tail (onward connection):</b>	½ inch BSP

### Features

- Reg 4 certified (WRAS, NSF, Kiwa, etc.)
- Easy operation for users with limited dexterity
- Cold start

### Finish options



**CP**  
Polished Chrome

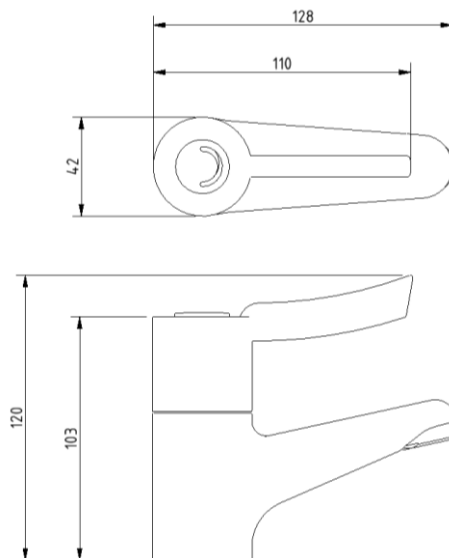
### Product description

Sequential basin mixer tap, polished chrome

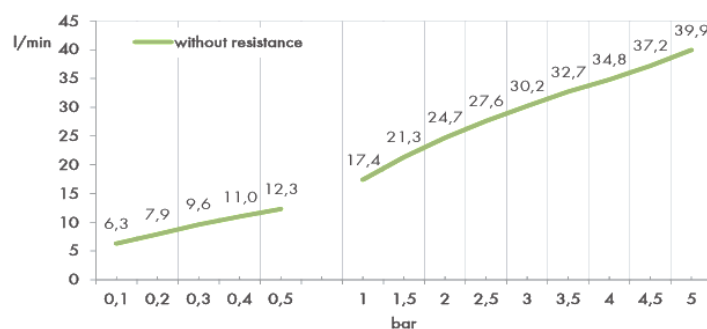
### Product code

BPLMON

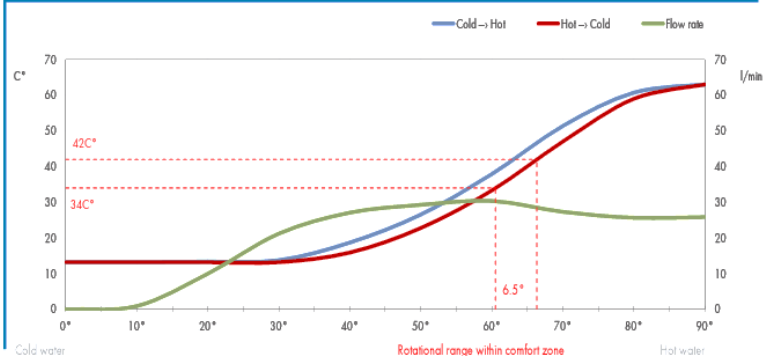
## Dimensions (mm)



## FLOW RATE CURVE



## FLOW RATE & HYSTERESIS CURVES



**TMV3 thermostatic mixer tap**

**Product details**

**Warranty:** 5 years

**Max load:** N/A

**Doc M compliant:** Yes

**Suitable for wet areas:** Yes

**Max Inlet Temp:** 85°C

**Factory Set Temp:** 43°C

**Max Operating Pressure:** 10 BAR Static

**Min Inlet Pressure:** 0.2 BAR Dynamic

**Features**

- Reg 4 Certified (WRAS, NSF, Kiwa, etc.)
- TMV3 Approved
- Safe touch body
- Copper inlet tails
- Self-draining spout
- Complies with Part M of the Building Regulations
- Easy operation for users with limited dexterity
- System Installation: Unvented, Pressurised, Gravity & Combination

**Finish options**

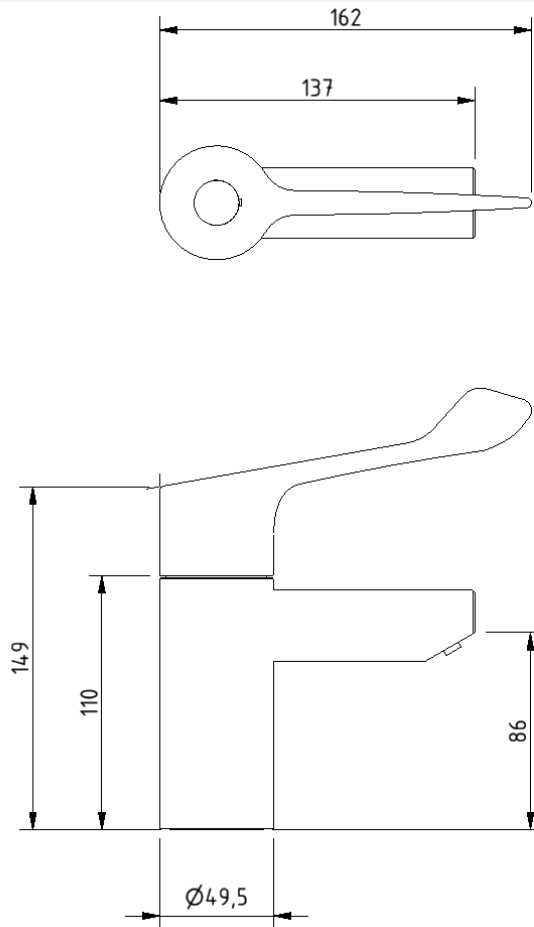

**CP**  
Polished Chrome

**Product description**
**Product code**

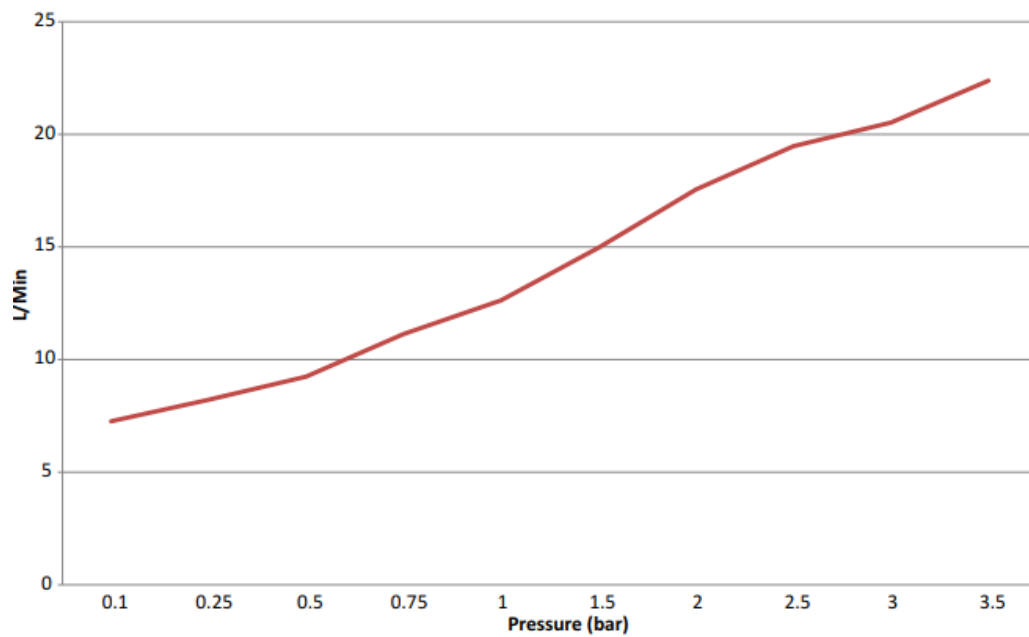
TMV3 thermostatic mixer tap, polished chrome

TAPTMOV/CP

Dimensions (mm)



*FLOW RATE FOR TAPTMV*





## Basin waste with stainless steel grid



### Product details

**Warranty:** 2 years

**Max load:** N/A

**Doc M compliant:** Yes

**Suitable for wet areas:** Yes

### Features

- Slotted type for use with basins without overflow
- Manufactured from high quality materials
- Quick and simple installation

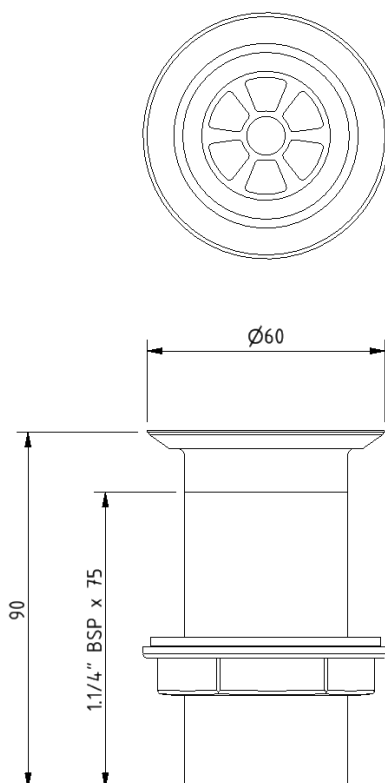
### Product description

Basin waste, plastic body, white, stainless grid, unslotted, 1-1/4" BSP thread

### Product code

P-000245-X00X

### Dimensions (mm)



Fitzroy of London may occasionally need to change specification of products and/or kit contents and reserves the right to do so. We strive to keep our documentation up to date; however, we cannot guarantee this. We accept no liability for any information given on this data sheet.

Need some product advice? Contact our team of product specialists  
+44(0)1642 710 719 | [sales@fitzroyoflondon.com](mailto:sales@fitzroyoflondon.com)  
[www.fitzroyoflondon.com](http://www.fitzroyoflondon.com)

## Stainless steel grab rail with concealed fixings, 35mm diameter tube



### Product details

<b>Warranty:</b>	5 Years
<b>Max load:</b>	185 kg
<b>Doc M compliant:</b>	Yes
<b>Suitable for wet areas:</b>	Yes

### Features

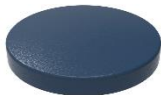
- Stainless steel construction
- Durable powder coated finish
- Concealed fixing

### Finish options

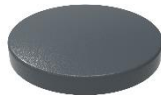
#### Powder coated



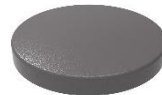
**WH**  
White (RAL 9016)



**DB**  
Dark Blue (RAL 5011)



**DG**  
Dark Grey (RAL 7016)



**GY**  
Grey (RAL 7005)

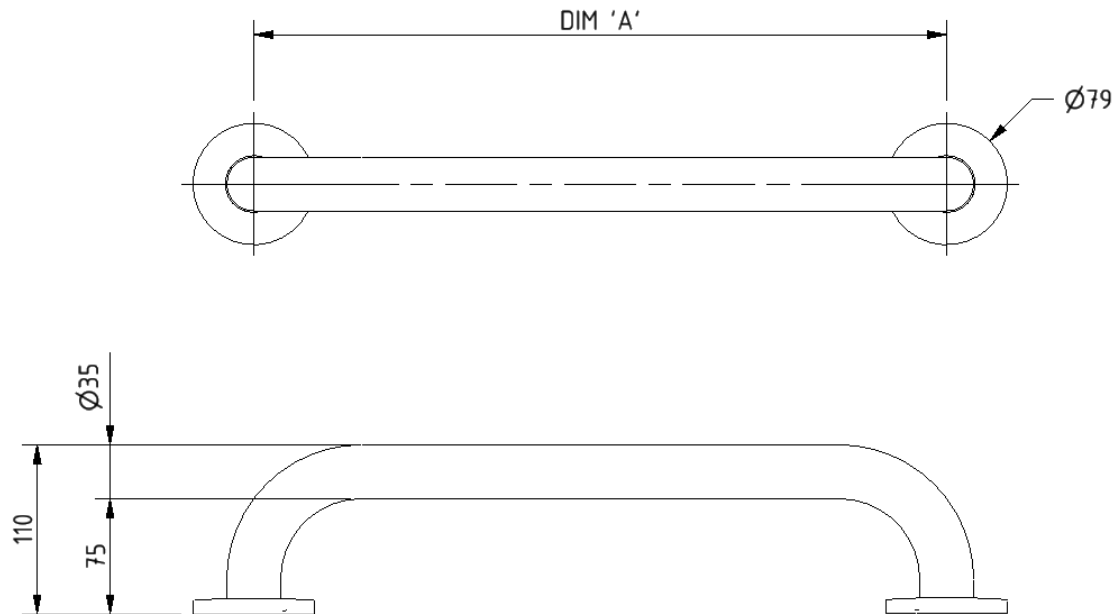
### Product description

### Product code

Grab rail, stainless steel, concealed fixings, 35mm diameter, 300mm	210130/**
Grab rail, stainless steel, concealed fixings, 35mm diameter, 450mm	210145/**
Grab rail, stainless steel, concealed fixings, 35mm diameter, 600mm	210160/**
Grab rail, stainless steel, concealed fixings, 35mm diameter, 900mm	210190/**

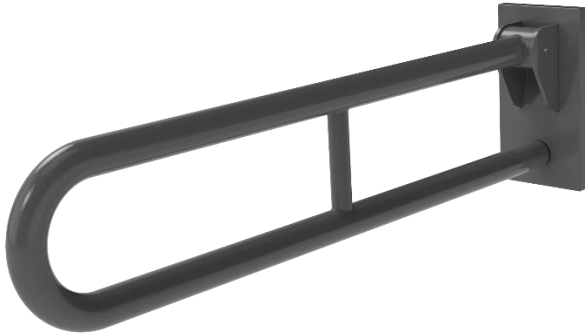
Replace \*\* with 2-character short code for chosen finish.  
e.g., 210130/WH

# Dimensions (mm)



PRODUCT CODE	210130/**	210145/**	210160/**	210190/**
DIM 'A'	300	450	600	900

## Stainless steel friction hinged support rail with concealed fixings, 800mm



### Product details

**Warranty:** 5 years

**Max load:** 120 kg

**Doc M compliant:** Yes

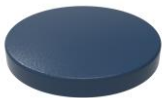
**Suitable for wet areas:** Yes

### Features

- Complies with Part M of the Building Regulations
- Premium friction folding mechanism
- Stainless steel construction
- Concealed wall fixings

### Finish options

#### Powder Coated



**DB**  
Dark Blue (RAL 5011)



**DG**  
Dark Grey (RAL 7016)



**GY**  
Grey (RAL 7005)



**WH**  
White (RAL 9016)

#### Mechanical



**SP**  
Polished Stainless Steel



**SS**  
Satin Stainless Steel

### Product description

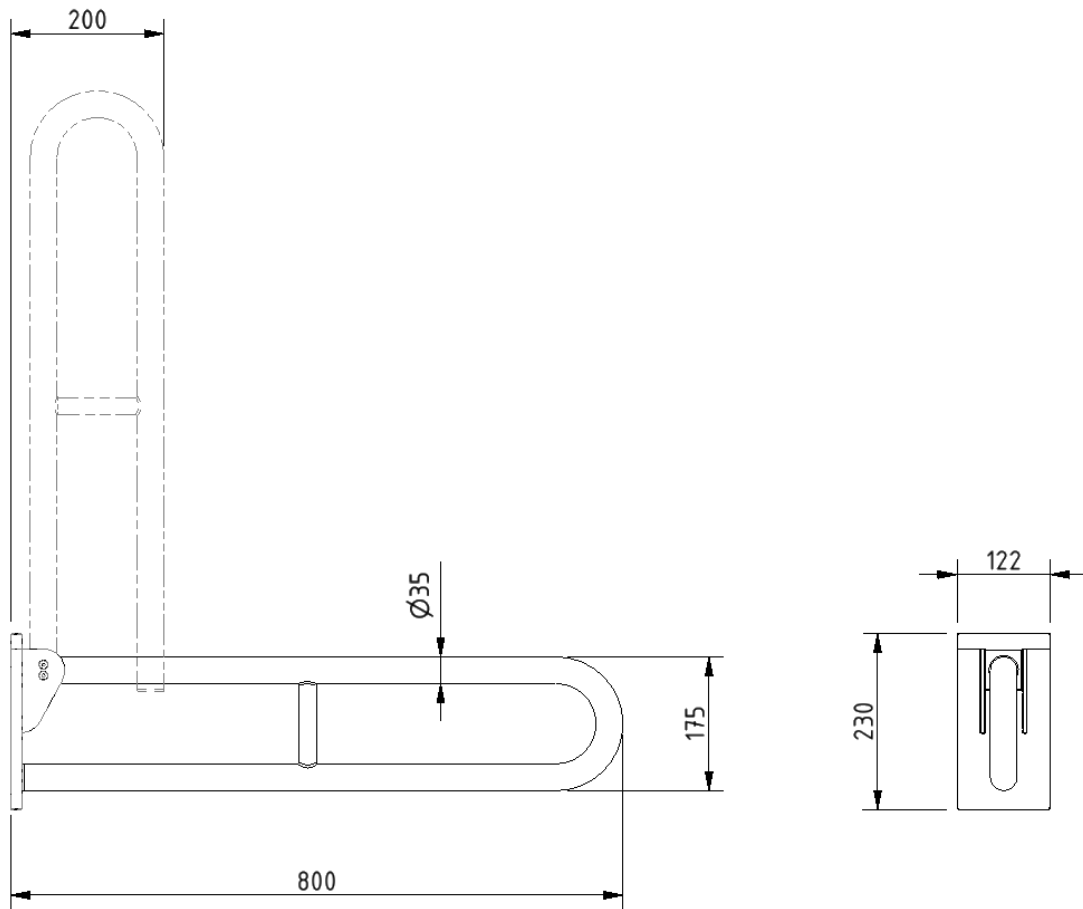
Friction hinged rail, stainless steel, concealed fixing, 800mm

### Product code

105SC-\*\*

Replace \*\* with 2-character short code for chosen finish (Powder Coated / Mechanical).  
e.g., 105SC/DB

## Dimensions (mm)



## Stainless steel back rest rail with concealed fixings and white pad



### Product details

<b>Warranty:</b>	5 years
<b>Max load:</b>	N/A
<b>Doc M compliant:</b>	Yes
<b>Suitable for wet areas:</b>	Yes

### Features

- Complies with Part M of the Building Regulations
- Non-corrosive stainless steel construction
- Durable wipe clean polyurethane pad
- Closed cell polyurethane construction for maximum hygiene and comfort
- Saddle clips for fixing pad to rail

## Finish options

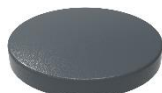
### Powder Coated



**WH**  
White (RAL 9016)



**DB**  
Dark Blue (RAL 5011)



**DG**  
Dark Grey (RAL 7016)



**GY**  
Grey (RAL 7005)

### Mechanical



**SS**  
Satin Stainless Steel



**SP**  
Polished Stainless Steel

## Product description

## Product code

Back rest rail with white pad, stainless steel, 220mm projection, concealed fixings

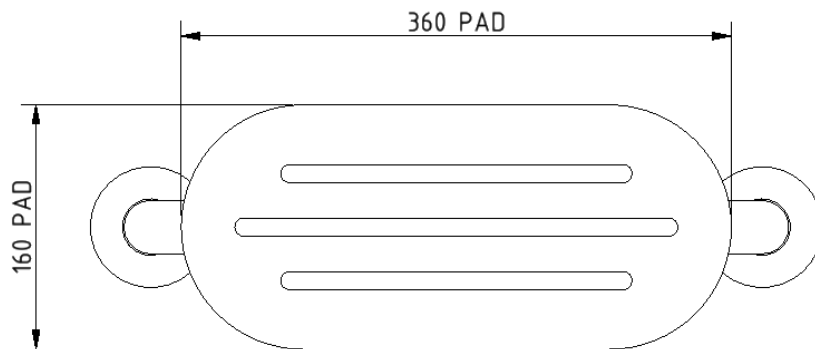
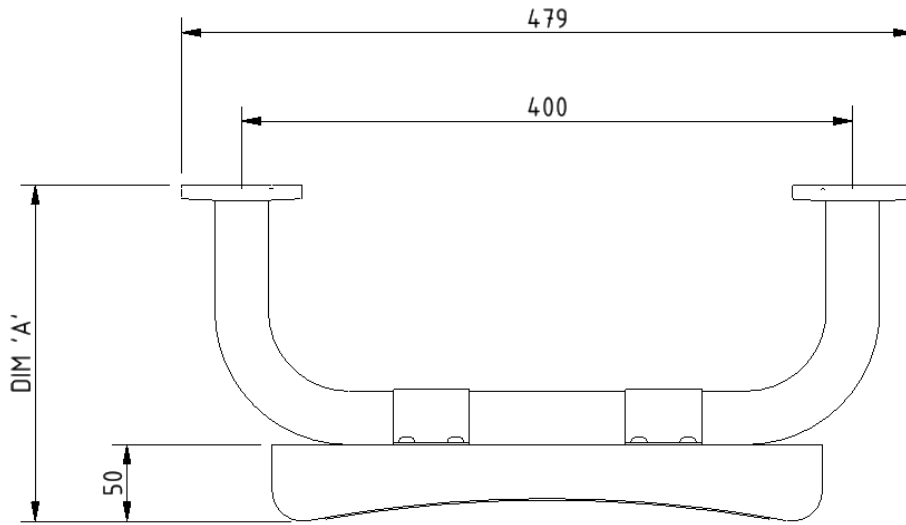
BR-220SC/\*\*

Back rest rail with white pad, stainless steel, 270mm projection, concealed fixings

BR-270SC/\*\*

Replace \*\* with 2-character short code for chosen finish (Mechanical / Powder Coated).  
e.g., BR-220SC/WH

## Dimensions (mm)



PRODUCT CODE	BR-220SC/**	BR-270SC/**
DIM 'A'	220	270

## TMV3 inline thermostatic mixing valve



### Product details

**Warranty:** 2 years

**Max load:** N/A

**Doc M compliant:** Yes

**Suitable for wet areas:** Yes

### Features

- TMV3 approved & Reg 4 Certified (WRAS, NSF, Kiwa, etc.)
- Complies with Part M of the Building Regulations
- Building Regulations Part G compliant
- Highly resistant to scaling
- Anti-tamper proof head
- Complies with HTM04-01 D08
- TMV2 approved & complies with BS EN 1111 & BS EN 1287:2017
- Integral check valves & strainers

### Finish options



**CP**  
Polished Chrome

### Product description

TMV3 inline thermostatic mixing valve - 15mm

### Product code

BPLTMV



