

## Back to wall Doc M toilet pack with stainless steel concealed fixing luxury grab rails



### Product details

<b>Warranty:</b>	See individual products
<b>Max load:</b>	See individual products
<b>Doc M compliant:</b>	Yes
<b>Suitable for wet areas:</b>	Yes

### Features

- Complies with Part M of the Building Regulations
- Inlet valve and syphon Reg 4 Certified (WRAS, NSF, Kiwa, etc.)
- Concealed fixing stainless steel grab rails
- Universal – suitable for left and right-handed transfer
- Simple one box solution
- Optional TMV3 valve

### Finish options

#### Mechanical



#### Powder Coated



### Product description

### Product code

Luxury back to wall Doc M toilet pack

NY03-DM-31000/\*\*

Luxury back to wall Doc M toilet pack, TMV3 valve

NY03-DM-31100/\*\*

Replace \*\* with 2-character short code for chosen finish (Mechanical / Powder Coated)  
e.g., NY03-DM-31000/SP



## Back to wall box rim Doc M pan



### Product details

<b>Warranty:</b>	Lifetime
<b>Max load:</b>	400 kg
<b>Doc M compliant:</b>	Yes
<b>Suitable for wet areas:</b>	Yes

### Features

- Complies with Part M of the Building Regulations when used in conjunction with back box (BPLBOX)
- UKCA and CE compliant
- Comfort height to allow easier side transfer from wheelchair

## Finish options



**WH**  
White (RAL 9016)

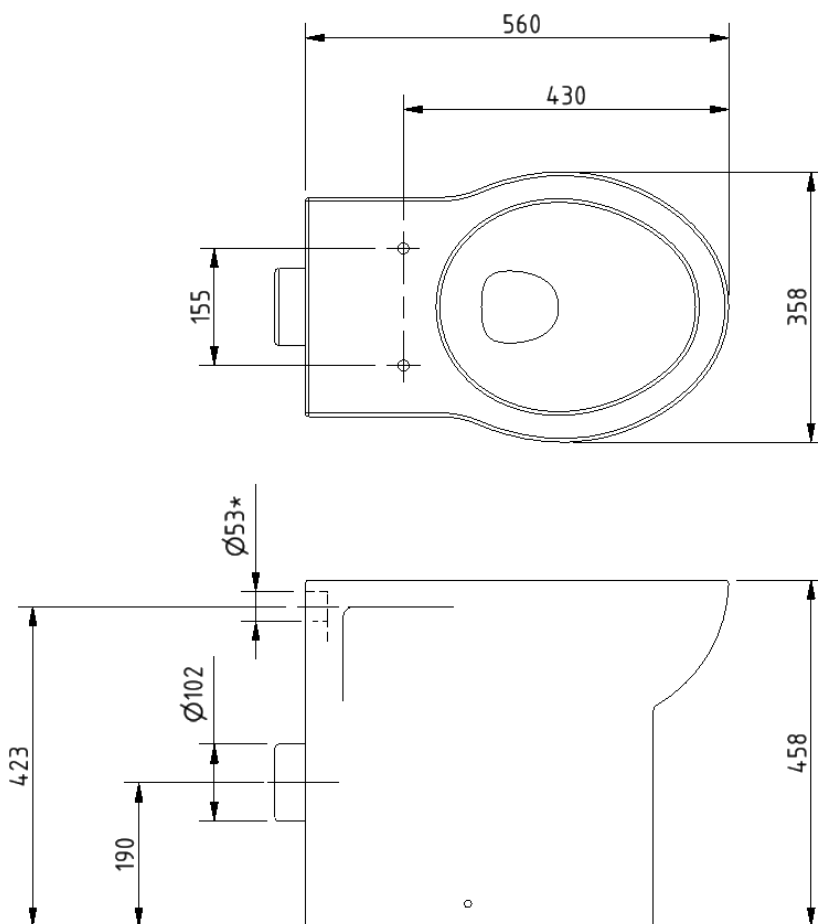
## Product description

Back to wall box rim Doc M pan

## Product code

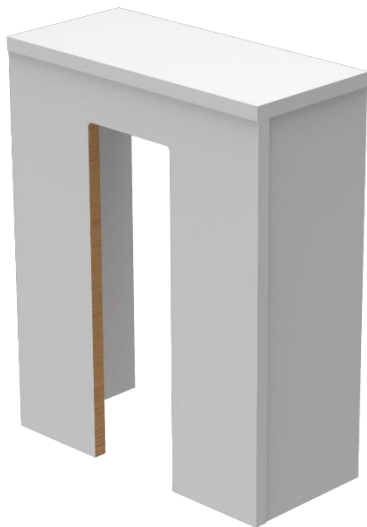
NY01-SW-31000-WH

# Dimensions (mm)



\*USE WITH  $\varnothing 38$ MM DIAMETER FLUSH PIPE

## Back box for back to wall pan



### Product details

**Warranty:** 2 years

**Max load:** N/A

**Doc M compliant:** Yes

**Suitable for wet areas:** No

### Features

- Easy to install flat pack solution
- Solid melamine faced chipboard construction
- For use with back to wall pan to aid compliance with Part M of the Building Regulations

### Finish options



**WH**  
White (RAL 9016)

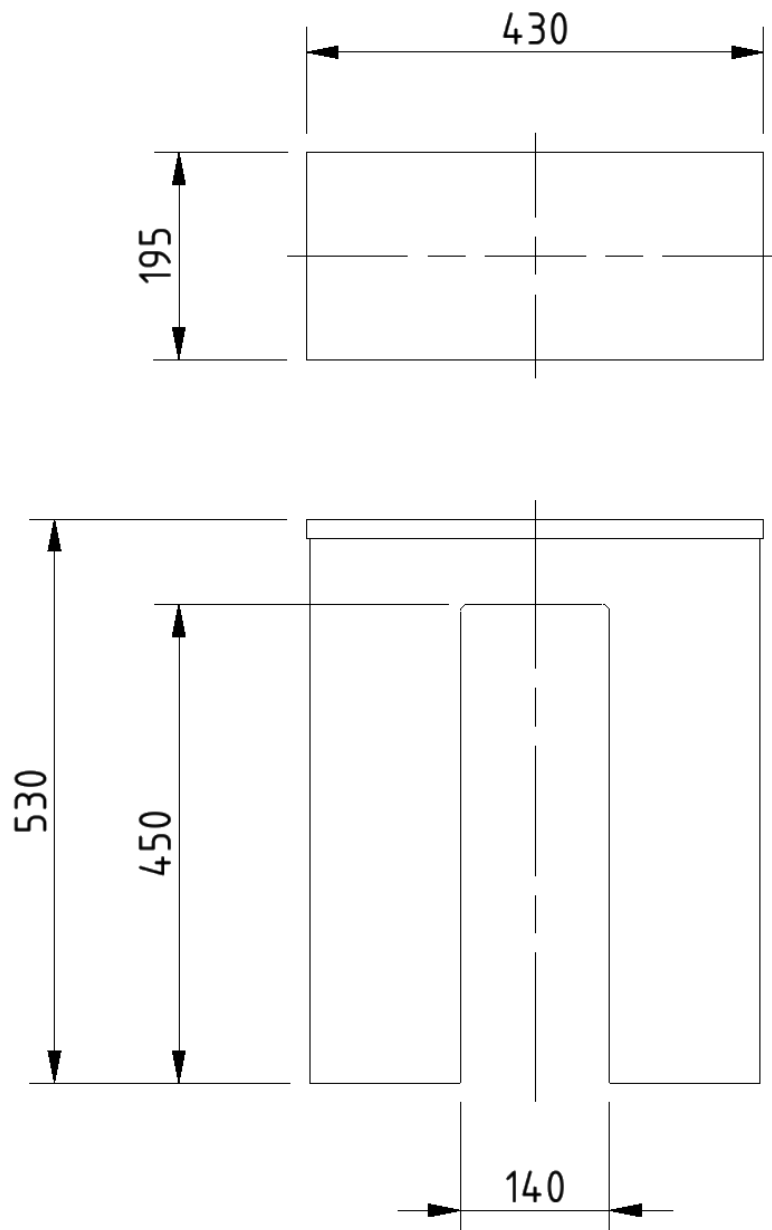
### Product description

Back box for back to wall pan, white

### Product code

BPLBOX

Dimensions (mm)



## Concealed cistern and fittings



### Product details

**Warranty:** 2 years

**Max load:** N/A

**Doc M compliant:** N/A

**Suitable for wet areas:** Yes

### Features

- Syphon and inlet valve Reg 4 Certified (WRAS, NSF, Kiwa, etc.)
- Top access
- 6 litre flush
- Internal / external overflow warning
- High density polystyrene construction

Does not come with flush lever or flush pipe

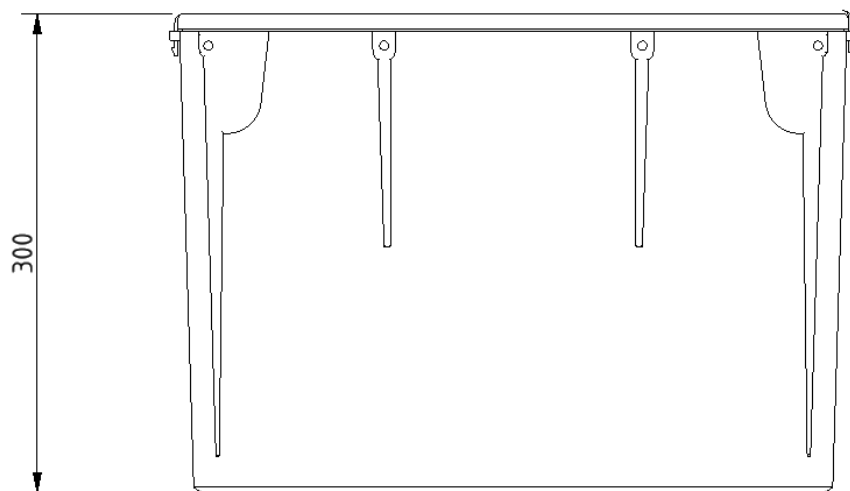
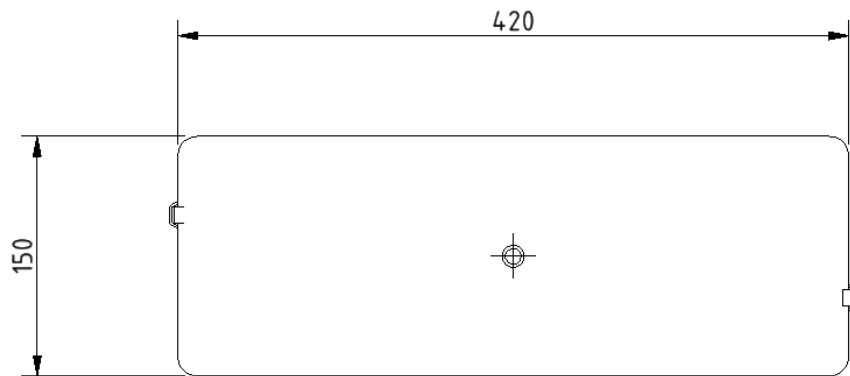
### Product description

Concealed cistern and fittings, no lever or flush pipe

### Product code

B-CISTHIDE

Dimensions (mm)



## Concealed cistern spatula lever



### Product details

**Warranty:** 2 years

**Max load:** N/A

**Doc M compliant:** Yes

**Suitable for wet areas:** Yes

### Features

- Complies with Part M of the Building Regulations
- Easy operation for users with limited dexterity
- For use with concealed cisterns

### Finish options

#### Powder Coated



**CP**  
Polished Chrome

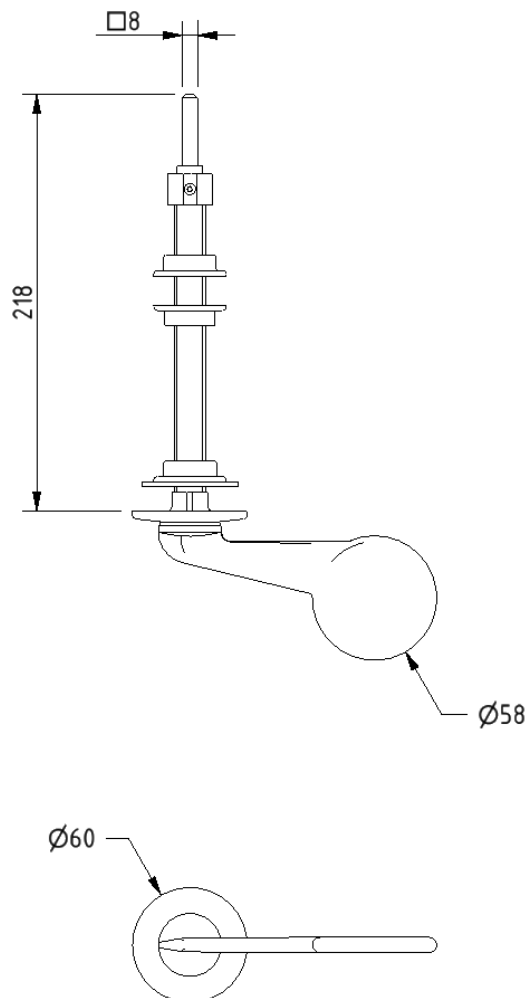
### Product description

Concealed cistern spatula lever, 215mm spindle, polished chrome

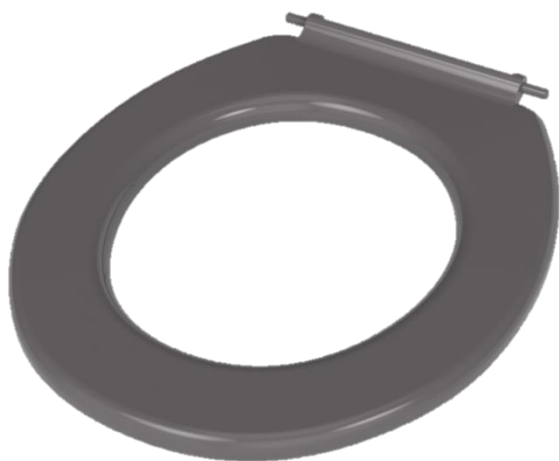
### Product code

P-000243-X00X

Dimensions (mm)



## Toilet seat, ring only, stainless steel pillar hinge



### Product details

**Warranty:** 2 years

**Max load:** 150 kg

**Doc M compliant:** Yes

**Suitable for wet areas:** Yes

### Features

- Complies with Part M of the Building Regulations
- Anti-bacterial, strong and durable Duroplast seat
- Ergonomic and comfortable shape
- Stainless steel hinge (bottom fix as standard)  
Additional hinge pack to convert to top fix: NY-TOPFIXHINGE
- Adjustable locating buffers
- Fits close coupled, low level, back to wall and wall hung pans

### Finish options



**DB**  
Dark Blue (RAL 5011)



**DG**  
Dark Grey (RAL 7016)



**GY**  
Grey (RAL 7005)



**WH**  
White (RAL 9016)

### Product description

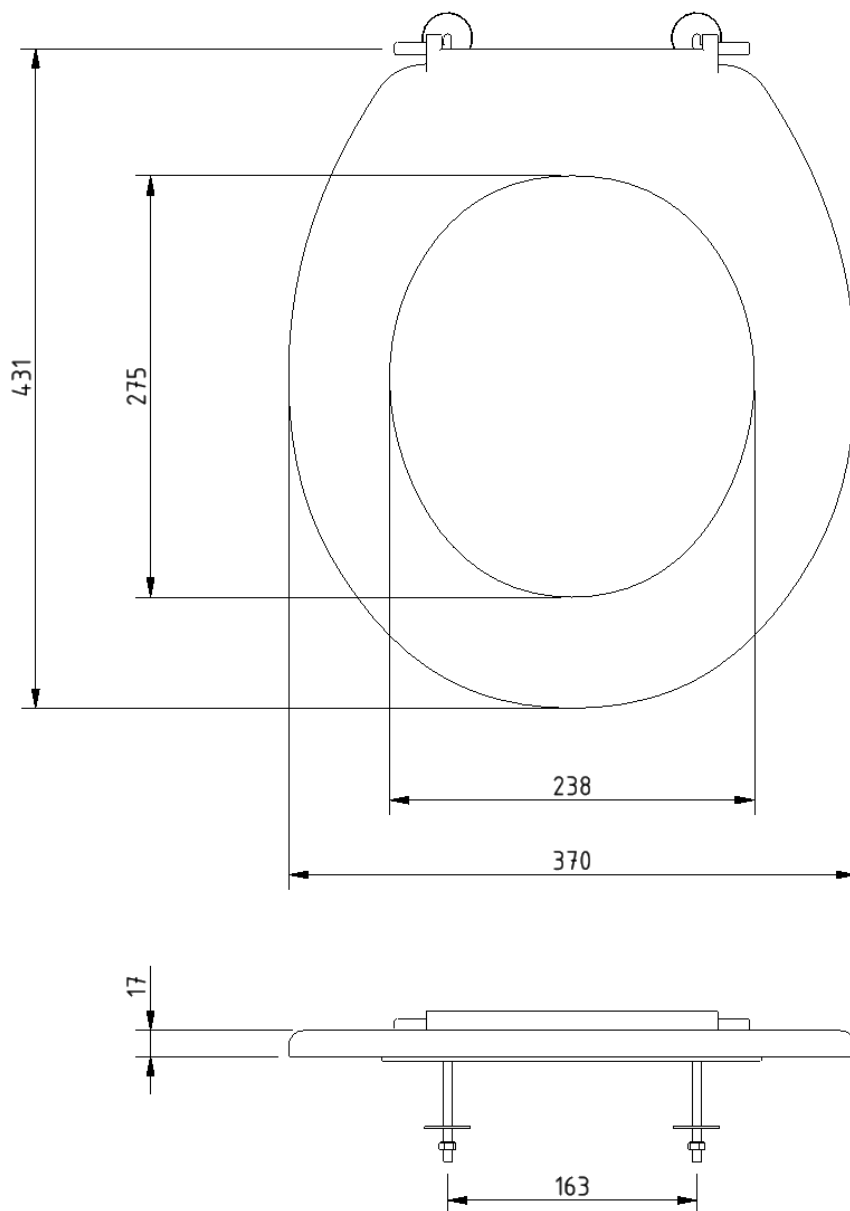
Toilet seat, ring only, stainless steel pillar hinge

### Product code

260015/\*\*

Replace \*\* with 2-character short code for chosen finish.  
e.g., 260015/DB

Dimensions (mm)



## Compact finger rinse Doc M basin



### Product details

**Warranty:** Lifetime

**Max load:** N/A

**Doc M compliant:** Yes

**Suitable for wet areas:** Yes

### Features

- Two tap holes for left or right-handed configuration
- Compact design to maximise space for a wheelchair user
- Complies with Part M of the Building Regulations
- Contemporary design
- No overflow
- CE Marked, compliant sanitary ware
- Wall fixings included

### Finish options



WH  
White (RAL 9016)

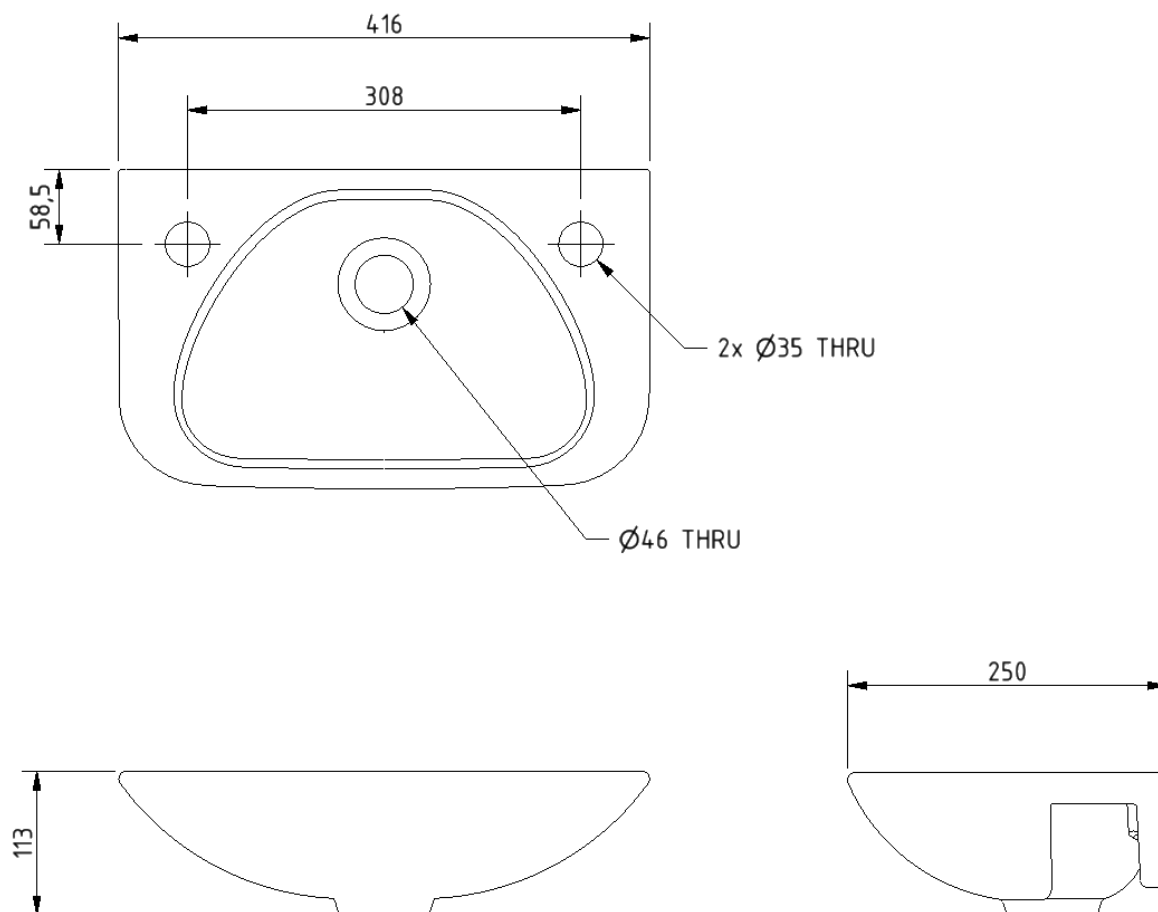
### Product description

Compact finger rinse Doc M basin, two tap holes, no overflow, white (RAL 9016)

### Product code

F20-BA01-CER-WH

Dimensions (mm)



## Basin waste with stainless steel grid



### Product details

**Warranty:** 2 years

**Max load:** N/A

**Doc M compliant:** Yes

**Suitable for wet areas:** Yes

### Features

- Slotted type for use with basins without overflow
- Manufactured from high quality materials
- Quick and simple installation

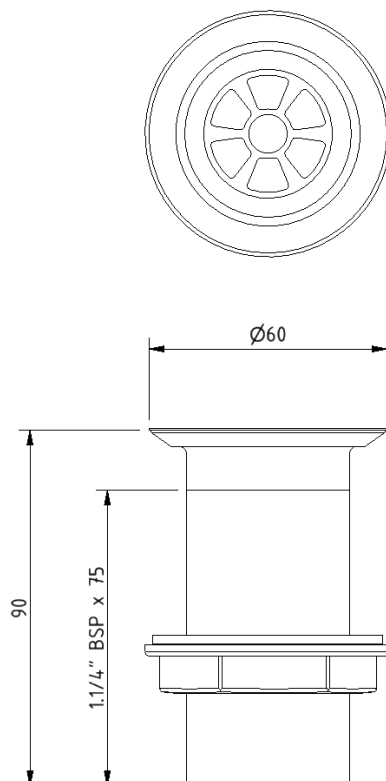
### Product description

Basin waste, plastic body, white, stainless grid, unslotted, 1-1/4" BSP thread

### Product code

P-000245-X00X

### Dimensions (mm)



Fitzroy of London may occasionally need to change specification of products and/or kit contents and reserves the right to do so. We strive to keep our documentation up to date; however, we cannot guarantee this. We accept no liability for any information given on this data sheet.

Need some product advice? Contact our team of product specialists  
+44(0)1642 710 719 | [sales@fitzroyoflondon.com](mailto:sales@fitzroyoflondon.com)  
[www.fitzroyoflondon.com](http://www.fitzroyoflondon.com)

## Polished chrome sequential basin mixer tap



### Product details

<b>Warranty:</b>	2 years
<b>Max load:</b>	N/A
<b>Doc M compliant:</b>	Yes
<b>Suitable for wet areas:</b>	Yes
<b>Flexi tap tail connection (to tap body):</b>	M10 thread
<b>Flexi tap tail (onward connection):</b>	½ inch BSP

### Features

- Reg 4 certified (WRAS, NSF, Kiwa, etc.)
- Easy operation for users with limited dexterity
- Cold start

### Finish options



**CP**  
Polished Chrome

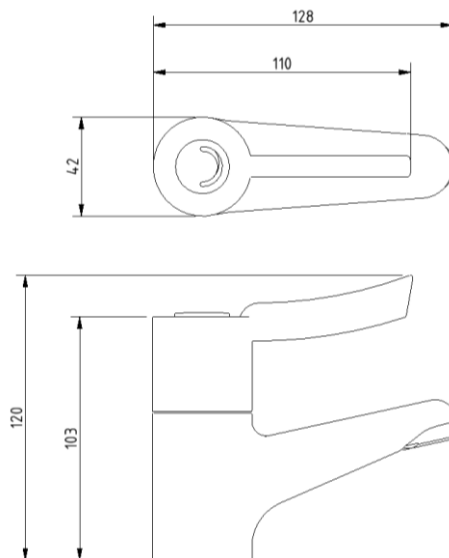
### Product description

Sequential basin mixer tap, polished chrome

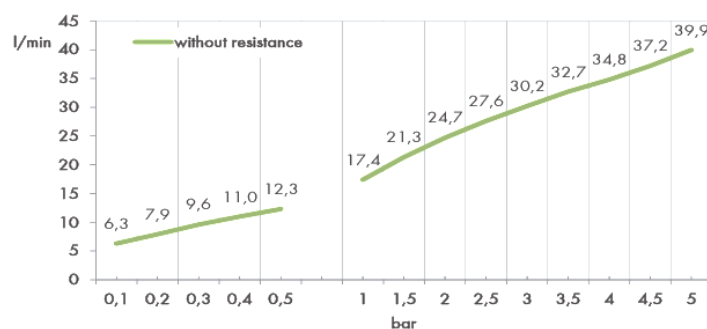
### Product code

BPLMON

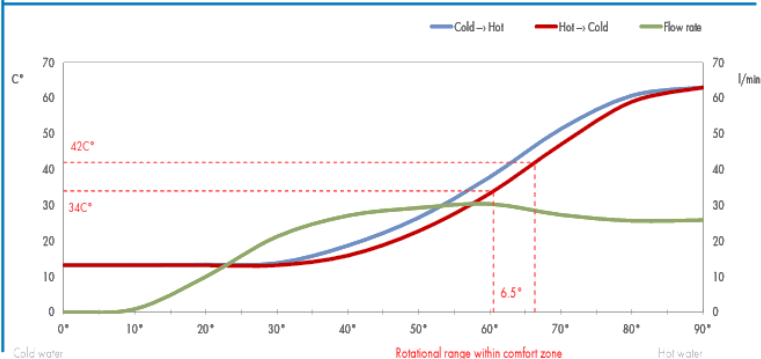
## Dimensions (mm)



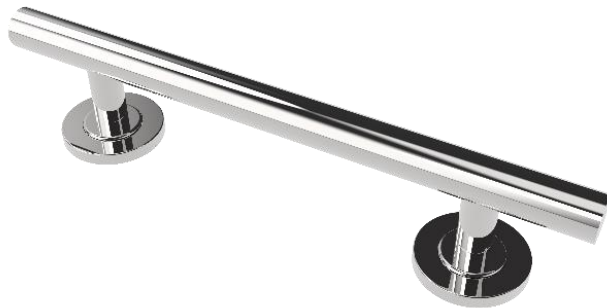
## FLOW RATE CURVE



## FLOW RATE & HYSTERESIS CURVES



## Luxury straight stainless steel concealed fixing grab rail



### Product details

<b>Warranty:</b>	5 Years
<b>Max load:</b>	150 kg
<b>Doc M compliant:</b>	Yes
<b>Suitable for wet areas:</b>	Yes

### Features

- High quality stainless steel construction
- Concealed fixing grab rails
- Complies with Doc M of the Building Regulations
- Stylish 'T-Bar' design

## Finish options

### Mechanical



**SS**  
Satin Stainless Steel



**SP**  
Polished Stainless Steel

### Powder Coated



**MB**  
Matt Black (RAL 9005)

## Product description

## Product code

Luxury straight, stainless steel concealed fixing grab rail, 300mm

F22-0300-LSC-\*\*

Luxury straight, stainless steel concealed fixing grab rail, 450mm

F22-0450-LSC-\*\*

Luxury straight, stainless steel concealed fixing grab rail, 600mm

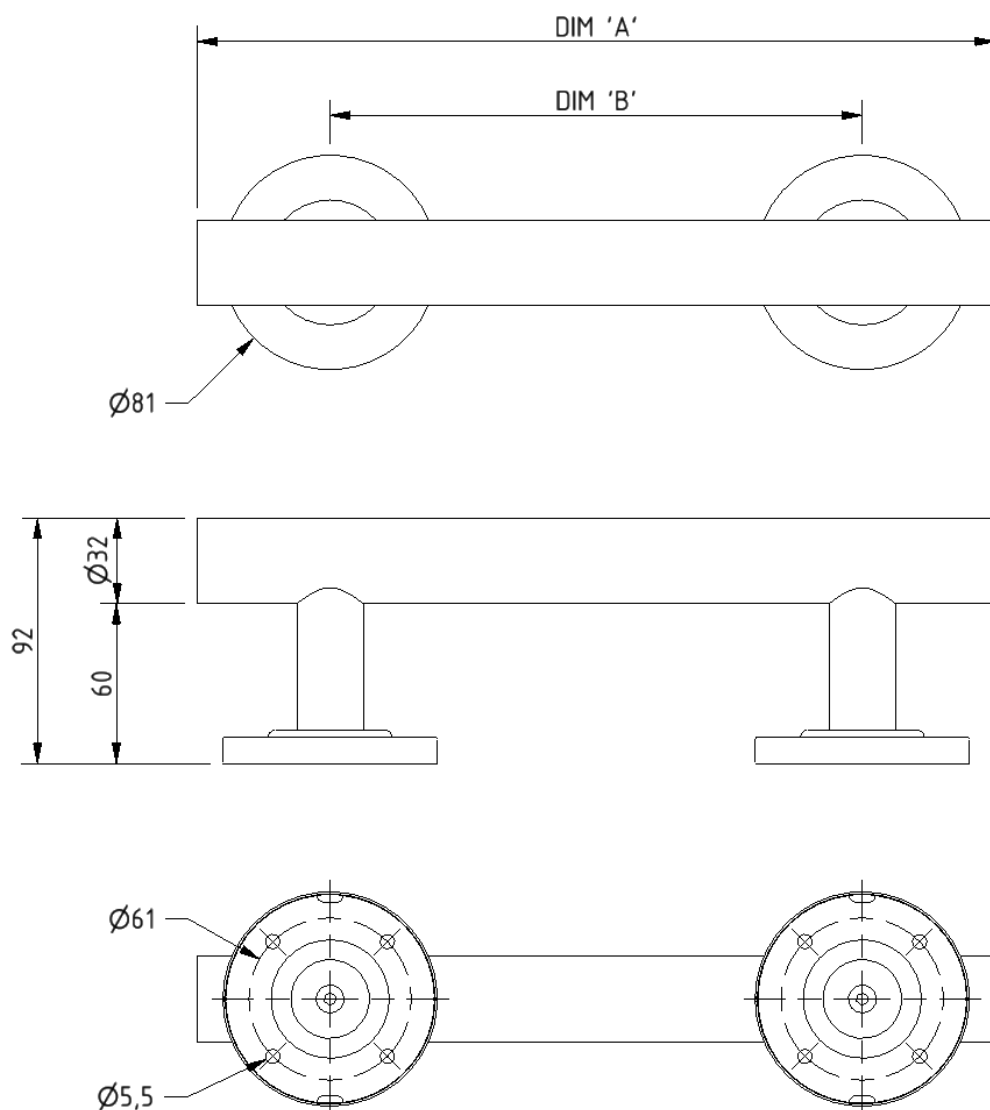
F22-0600-LSC-\*\*

Luxury straight, stainless steel concealed fixing grab rail, 900mm

F22-0900-LSC-\*\*

Replace \*\* with 2-character short code for chosen finish (Mechanical / Powder Coated).  
e.g., F22-0300-LSC-SS

# Dimensions (mm)



PRODUCT CODE	F22-0300-LSC	F22-0450-LSC	F22-0600-LSC	F22-0900-LSC
DIM 'A'	300	450	600	900
DIM 'B'	200	300	450	750

## Contemporary single arm stainless steel friction hinged rail with concealed fixings



### Product details

**Warranty:** 5 years

**Max load:** 90 kg

**Doc M compliant:** Yes

**Suitable for wet areas:** Yes

### Features

- Contemporary single arm design
- Premium friction folding mechanism
- High quality stainless steel construction
- Complies with Part M of the Building Regulations

### Finish options

#### Mechanical



**SP**

Polished Stainless Steel



**SS**

Satin Stainless Steel

#### Powder Coated



**MB**

Matt Black (RAL 9005)

### Product description

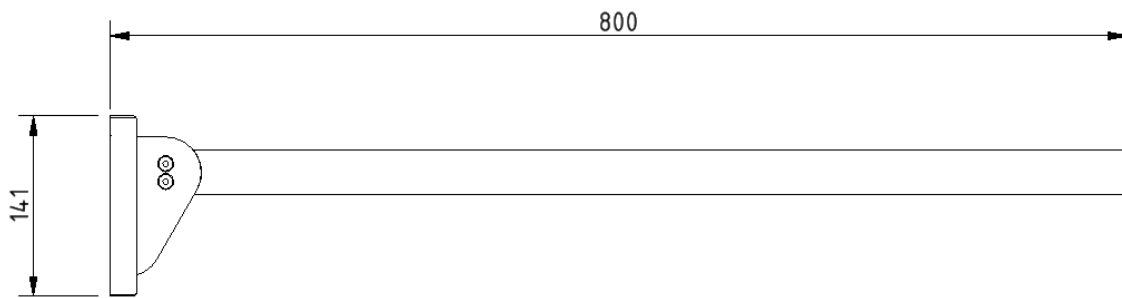
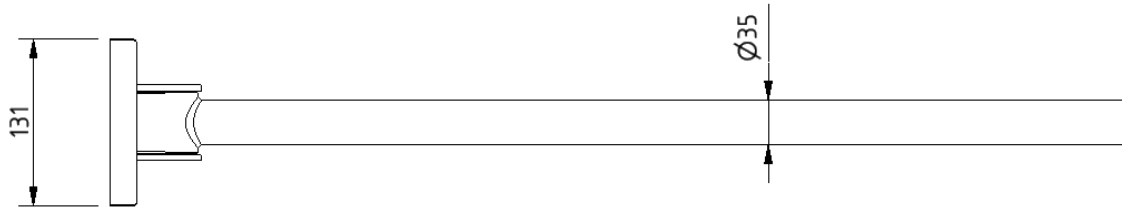
Contemporary single arm friction rail, stainless steel, concealed fixings

### Product code

310480C/\*\*

Replace \*\* with 2-character short code for chosen finish (Mechanical / Powder Coated).  
e.g., 310480C/SP

Dimensions (mm)



## Luxury stainless steel back rest rail and pad with concealed fixings



### Product details

**Warranty:** 5 years

**Max load:** N/A

**Doc M compliant:** Yes

**Suitable for wet areas:** Yes

### Features

- Durable wipe clean polyurethane pad
- Non-corrosive stainless steel construction
- Saddle clips for fixing pad to rail
- Complies with Part M of the Building Regulations
- Stylish T-Bar design

### Finish options

#### Mechanical



**SS**  
Satin Stainless Steel



**SP**  
Polished Stainless Steel

#### Powder coated



**MB**  
Matt Black (RAL 9005)

### Product description

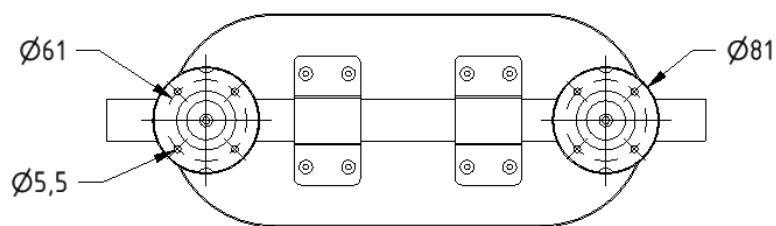
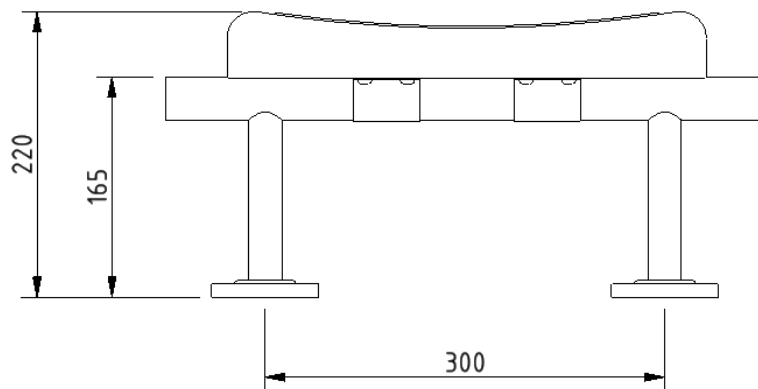
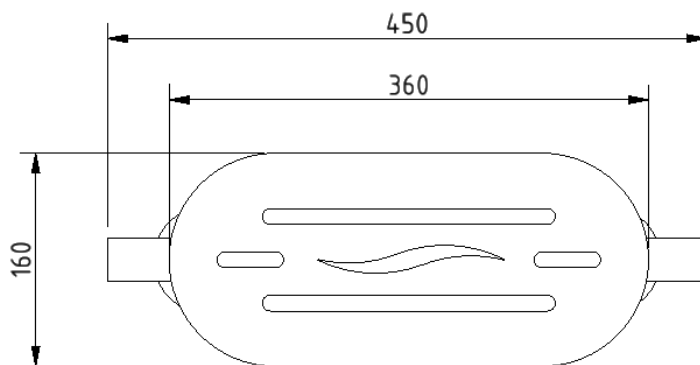
Luxury back rest rail, including pad, stainless steel, concealed fixings, overall projection 220mm

### Product code

F22-B220-LSC-\*\*

Replace \*\* with 2-character short code for chosen finish (Mechanical / Powder Coated).  
e.g., F22-B220-LSC-SS

Dimensions (mm)



## TMV3 inline thermostatic mixing valve



### Product details

**Warranty:** 2 years

**Max load:** N/A

**Doc M compliant:** Yes

**Suitable for wet areas:** Yes

### Features

- TMV3 approved & Reg 4 Certified (WRAS, NSF, Kiwa, etc.)
- Complies with Part M of the Building Regulations
- Building Regulations Part G compliant
- Highly resistant to scaling
- Anti-tamper proof head
- Complies with HTM04-01 D08
- TMV2 approved & complies with BS EN 1111 & BS EN 1287:2017
- Integral check valves & strainers

### Finish options



**CP**  
Polished Chrome

### Product description

TMV3 inline thermostatic mixing valve - 15mm

### Product code

BPLTMV

