

Rimless close coupled ambulant Doc M toilet pack, steel, concealed fixings



Product details

Warranty:	See individual products
Max load:	See individual products
Doc M compliant:	Yes
Suitable for wet areas:	No

Features

- Complies with Part M of the Building Regulations
- Hygienic rimless pan with robust dedicated seat
- Inlet valve and syphon Reg 4 Certified (WRAS, NSF, Kiwa, etc.)
- Concealed fixing grab rails
- Simple one box solution

Finish options

Powder Coated



DB
Dark Blue (RAL 5011)



DG
Dark Grey (RAL 7016)



GY
Grey (RAL 7005)



WH
White (RAL 9016)

Product description

Product code

Rimless close coupled ambulant Doc M toilet pack, lockable cistern, steel, concealed fixings

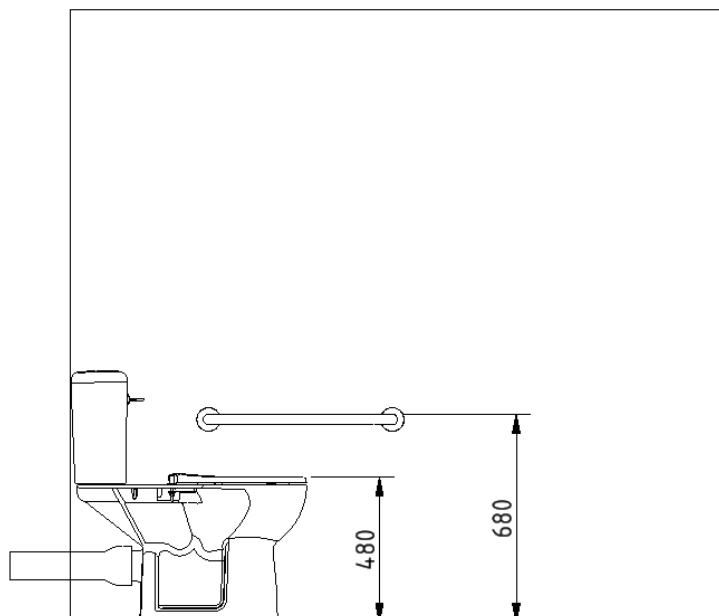
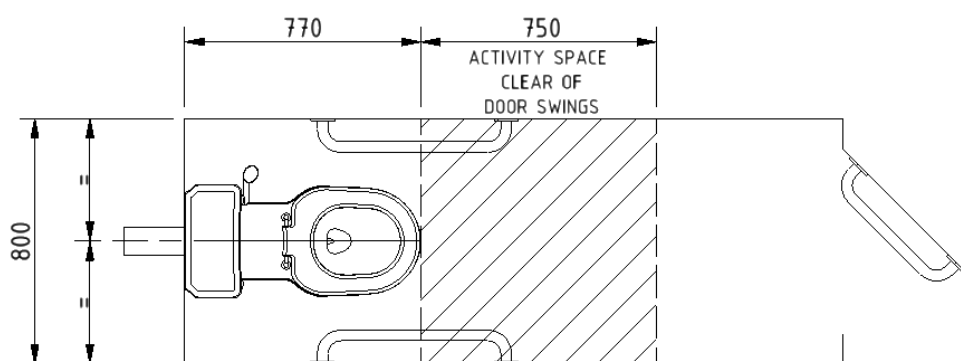
F20-AMLX-MS-******

Replace ****** with 2-character short code for chosen finish (Powder Coated)
e.g., F20-AMLX-MS-DB

Pack Contents

- 2 x 600mm coated steel grab rails with concealed fixings
- 1 x 450mm coated steel grab rail with concealed fixings
- 1 x Close coupled rimless Doc M pan
- 1 x Close coupled cistern for rimless pan (lockable lid as default)
- 1 x Close coupled cistern fitting pack with Doc M spatula lever
- 1 x Ring only toilet seat

Dimensions (mm)



Close coupled rimless Doc M pan



Product details

Warranty:	Lifetime
Max load:	400 kg
Doc M compliant:	Yes
Suitable for wet areas:	Yes

Features

- Extended projection to comply with Part M of the Building Regulations
- Rimless design for ease of cleaning
- Comfort height to allow easier side transfer from wheelchair
- UKCA & CE compliant
- Ceramic body

Finish options



WH
White (RAL 9016)

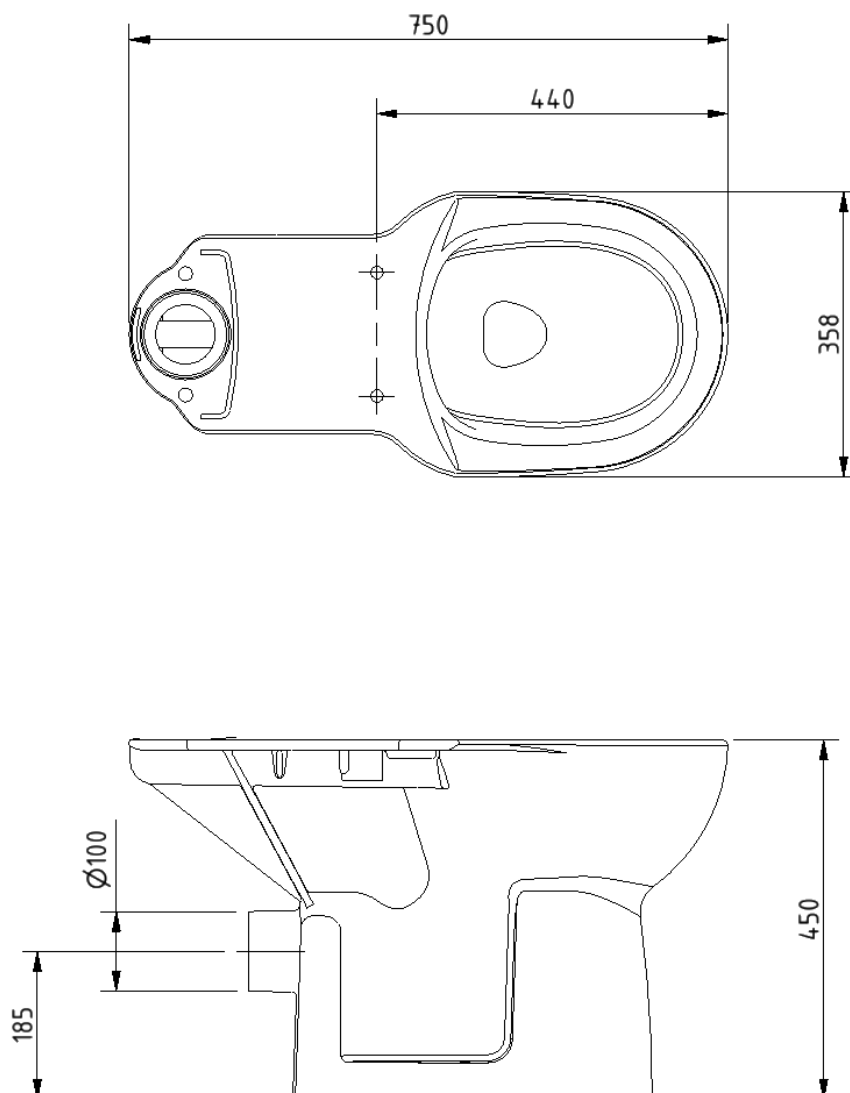
Product description

Close coupled rimless Doc M pan, white

Product code

NY01-PANCC02-WH

Dimensions (mm)



Ring only toilet seat



Product details

Warranty: 2 years

Max load: N/A

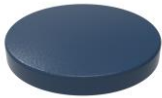
Doc M compliant: Yes

Suitable for wet areas: Yes

Features

- Complies with Part M of the Building Regulations
- Anti-bacterial, strong and durable seat
- Robust stainless steel bar hinge
- Ergonomic and comfortable shape
- Dedicated moulded buffers for best stability
- Fits pan NY01-PANCC02-WH (**Only compatible with this pan**)

Finish options



DB
Dark Blue (RAL 5011)



DG
Dark Grey (RAL 7016)



GY
Grey (RAL 7005)



WH
White (RAL 9016)

Product description

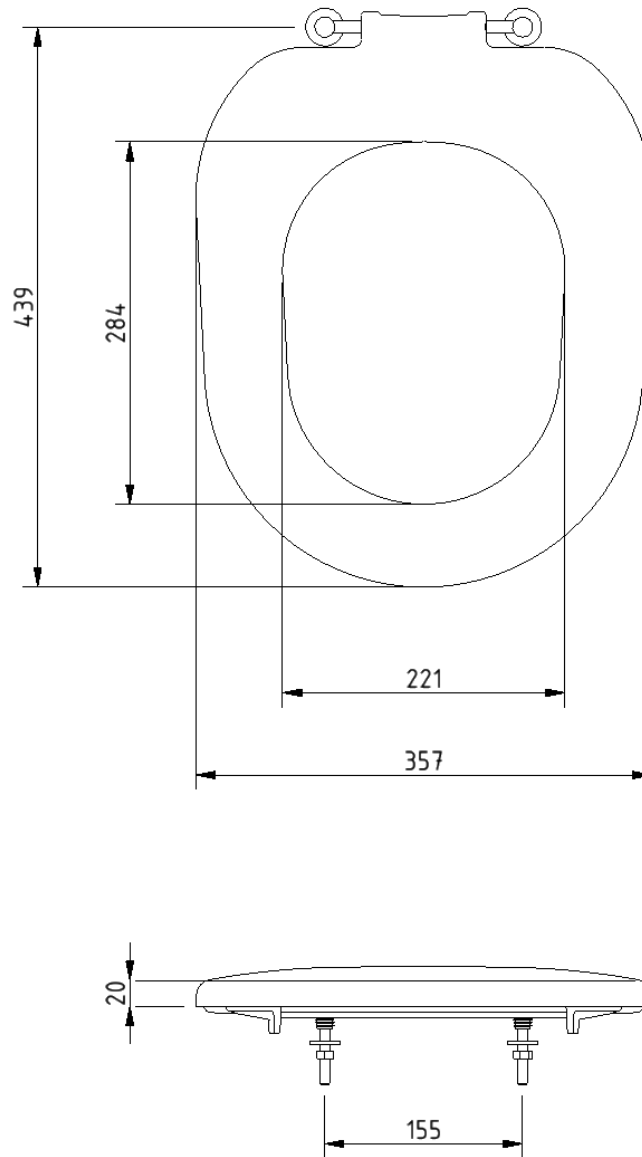
Toilet seat, ring only, stainless steel bar hinge

Product code

NY01-SEAT03-**

Replace ** with 2-character short code for chosen finish.
e.g., NY01-SEAT03-DB

Dimensions (mm)



Close coupled minimal cistern tank



Product details

Warranty:	Lifetime
Max load:	N/A
Doc M compliant:	Yes
Suitable for wet areas:	Yes

Features

- Modern minimal design
- Complies with Part M of the Building Regulations
- UKCA & CE compliant
- Suitable for front lever
- Bottom inlet
- Universal - either left or right handed
- Lockable lid option

Finish options



WH
White (RAL 9016)

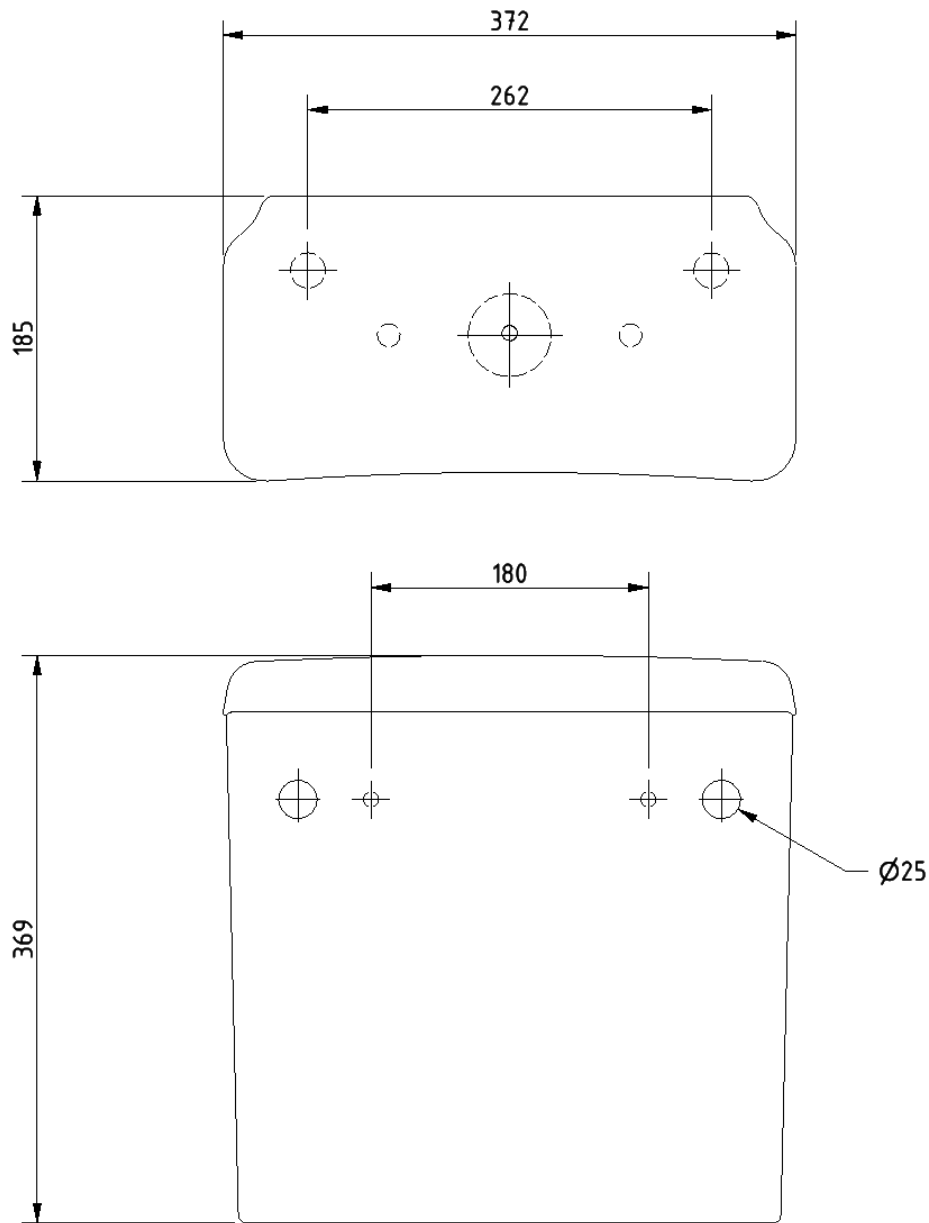
Product description

- Minimal close coupled cistern, white
- Minimal close coupled cistern with lockable lid, white

Product code

- BWCISTCC-SAN
- BWCISTCC/LC-SAN

Dimensions (mm)



Cistern fitting pack for close coupled rimless pan



Product details

Warranty: 2 years

Max load: N/A

Doc M compliant: Yes

Suitable for wet areas: Yes

Features

- Inlet valve and syphon Reg 4 Certified (WRAS, NSF, Kiwa, etc.)
- Can provide both full and half flush
- Doc M spatula lever to provide easy operation for users with limited dexterity
- 6 litre flush

Product description

Cistern fitting pack for close coupled rimless pan, includes lever and basin waste

Product code

SANCCPK-4

Pack contents

- 1 x Inlet valve
- 1 x Syphon
- 1 x Doc M spatula lever
- 2 x Cistern blanking plugs
- 1 x Close coupled fixing bolts
- 1 x Tap hole stopper
- 1 x Basin waste

Need some product advice? Contact our team of product specialists

+44(0)1642 710 719 | sales@fitzroyoflondon.com

www.fitzroyoflondon.com

DAT-SANCCPK-4 Doc Rev 1

Fitzroy of London may occasionally need to change specification of products and/or kit contents and reserves the right to do so.

D-Bar grab rail, steel, with concealed fixings, 35mm diameter tube



Product details

Warranty: 2 years

Max load: 200 kg

Doc M compliant: Yes

Suitable for wet areas: No

Features

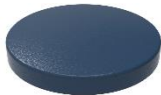
- Complies with Part M of the Building Regulations
- Robust steel construction
- Concealed Fixing Grab Rail

Finish options

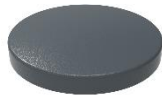
Powder Coated



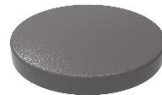
WH
White (RAL 9016)



DB
Dark Blue (RAL 5011)



DG
Dark Grey (RAL 7016)



GY
Grey (RAL 7005)

Product description

Product code

Round flange grab rail, steel, concealed fixings, 35mm diameter, 300mm

G1235C/**

Round flange grab rail, steel, concealed fixings, 35mm diameter, 450mm

G1835C/**

Round flange grab rail, steel, concealed fixings, 35mm diameter, 600mm

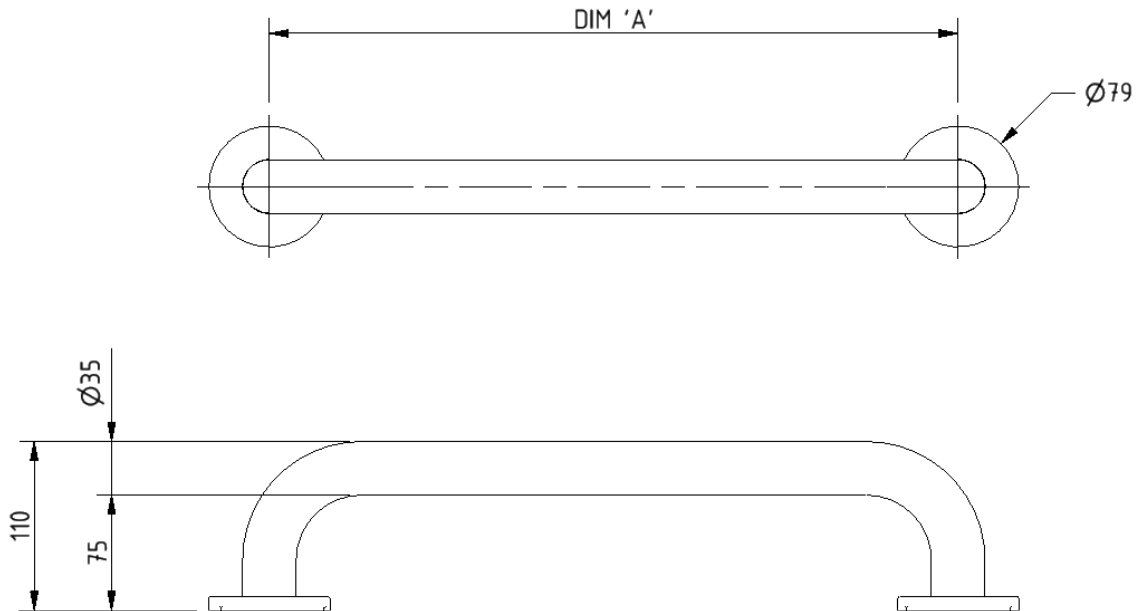
G2435C/**

Round flange grab rail, steel, concealed fixings, 35mm diameter, 900mm

G3635C/**

Replace ** with 2-character short code for chosen finish (Powder Coated).
e.g., G1235C/WH

Dimensions (mm)



PRODUCT CODE	G1235C/**	G1835C/**	G2435C/**	G3635C/**
DIM 'A'	300	450	600	900