

Close coupled accessible toilet pack, central tap hole basin, steel, exposed fixings



Product details

Warranty:	See individual products
Max load:	See individual products
Doc M compliant:	Yes
Suitable for wet areas:	No

Features

- Inlet valve and syphon Reg 4 Certified (WRAS, NSF, Kiwa, etc.)
- Universal – suitable for left or right-handed transfer
- Simple one box solution
- Hygienic rimless pan with robust dedicated seat

Finish options

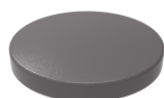
Powder Coated



DB
Dark Blue (RAL 5011)



DG
Dark Grey (RAL 7016)



GY
Grey (RAL 7005)



WH
White (RAL 9016)

Product description

Product code

Rimless close coupled accessible toilet pack, central tap hole basin, steel, exposed fixings

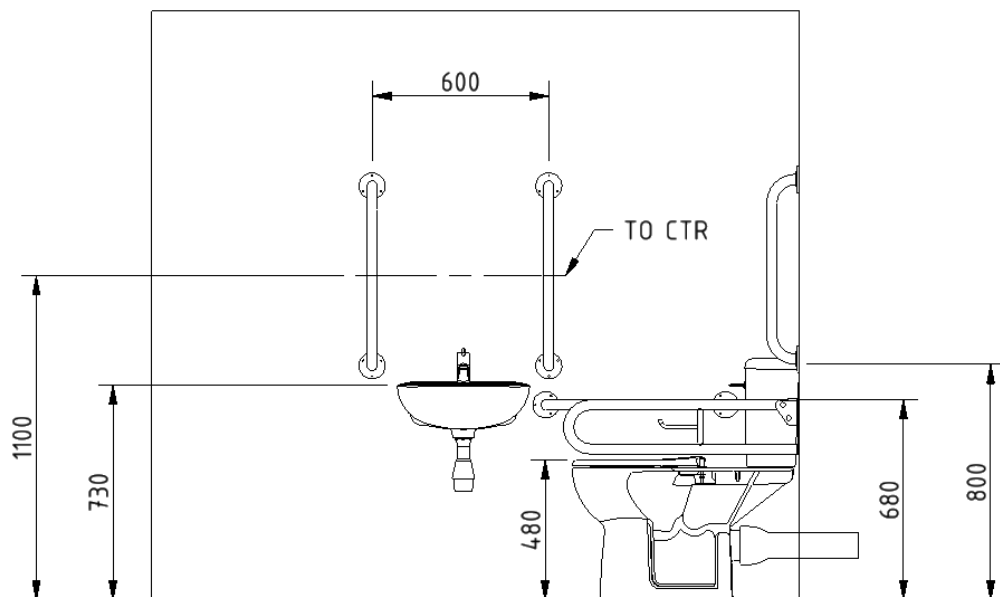
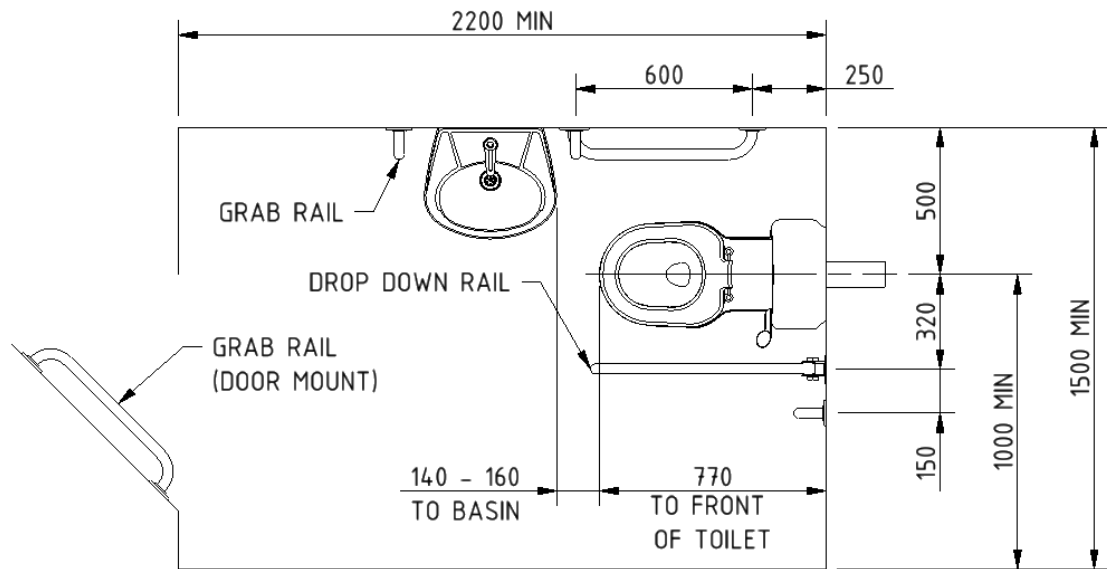
F20-CCX1-MSE-**

Replace ** with 2-character short code for chosen finish (Powder Coated)
e.g., F20-CCX1-MSE-DB

Pack Contents

- 5 x 600mm coated steel grab rails with exposed fixings
- 1 x 800mm coated steel hinged support rail with toilet roll holder
- 1 x Close coupled rimless Doc M pan
- 1 x Close coupled cistern with fittings and Doc M spatula lever
- 1 x Ring only toilet seat
- 1 x Central tap hole basin
- 1 x Sequential basin mixer tap
- 1 x Basin waste

Dimensions (mm)



Fitzroy of London may occasionally need to change specification of products and/or kit contents and reserves the right to do so. We strive to keep our documentation up to date; however, we cannot guarantee this. We accept no liability for any information given on this data sheet.

Close coupled rimless Doc M pan



Product details

Warranty:	Lifetime
Max load:	400 kg
Doc M compliant:	Yes
Suitable for wet areas:	Yes

Features

- Extended projection to comply with Part M of the Building Regulations
- Rimless design for ease of cleaning
- Comfort height to allow easier side transfer from wheelchair
- UKCA & CE compliant
- Ceramic body

Finish options



WH
White (RAL 9016)

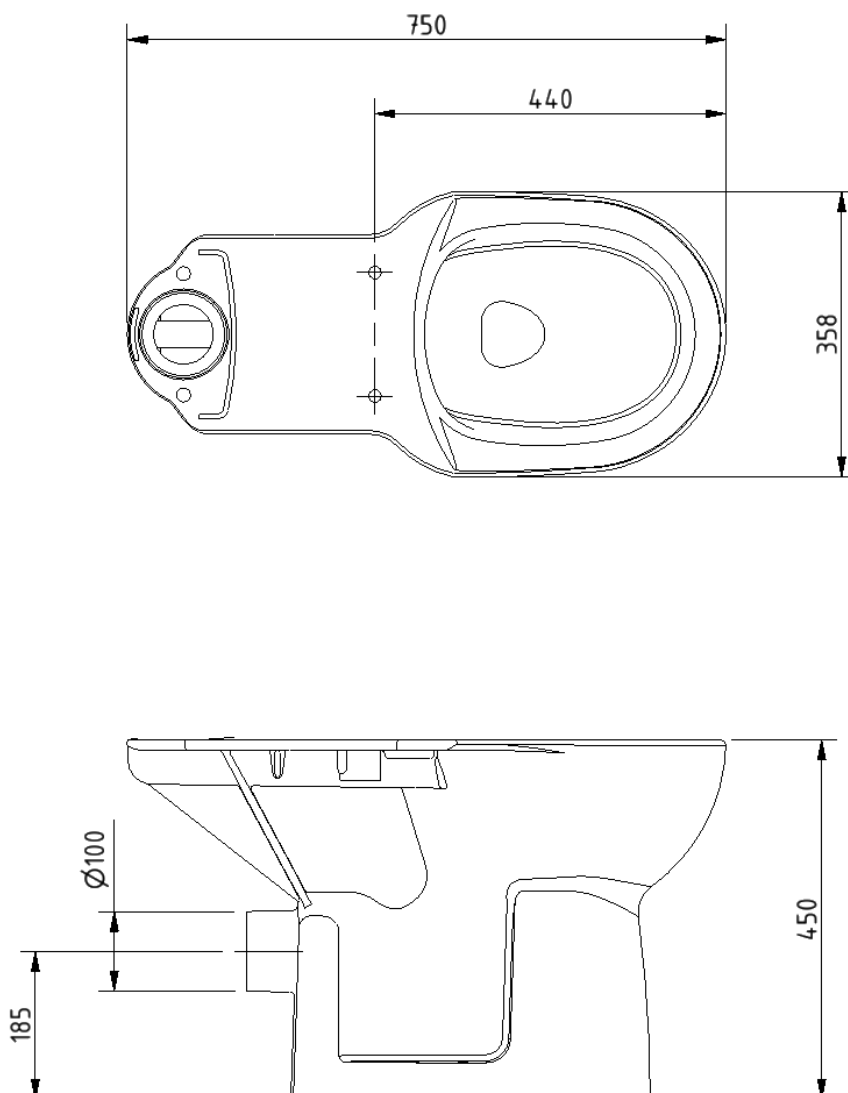
Product description

Close coupled rimless Doc M pan, white

Product code

NY01-PANCC02-WH

Dimensions (mm)



Ring only toilet seat



Product details

Warranty: 2 years

Max load: N/A

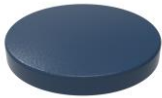
Doc M compliant: Yes

Suitable for wet areas: Yes

Features

- Complies with Part M of the Building Regulations
- Anti-bacterial, strong and durable seat
- Robust stainless steel bar hinge
- Ergonomic and comfortable shape
- Dedicated moulded buffers for best stability
- Fits pan NY01-PANCC02-WH (**Only compatible with this pan**)

Finish options



DB
Dark Blue (RAL 5011)



DG
Dark Grey (RAL 7016)



GY
Grey (RAL 7005)



WH
White (RAL 9016)

Product description

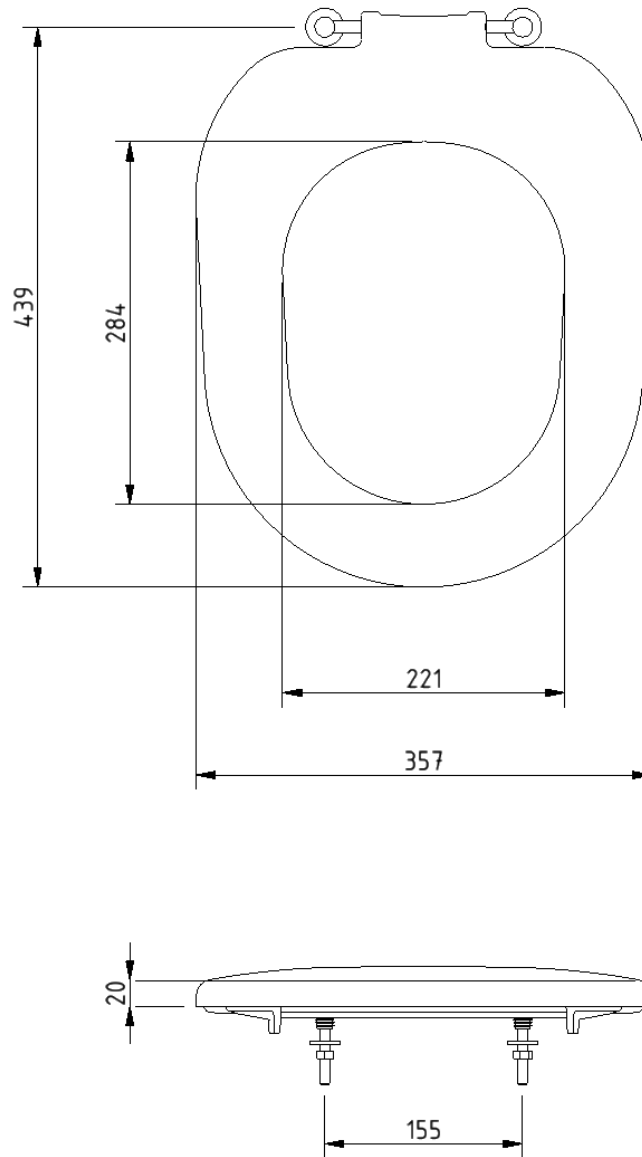
Toilet seat, ring only, stainless steel bar hinge

Product code

NY01-SEAT03-**

Replace ** with 2-character short code for chosen finish.
e.g., NY01-SEAT03-DB

Dimensions (mm)



Close coupled minimal cistern tank



Product details

Warranty:	Lifetime
Max load:	N/A
Doc M compliant:	Yes
Suitable for wet areas:	Yes

Features

- Modern minimal design
- Complies with Part M of the Building Regulations
- UKCA & CE compliant
- Suitable for front lever
- Bottom inlet
- Universal - either left or right handed
- Lockable lid option

Finish options



WH
White (RAL 9016)

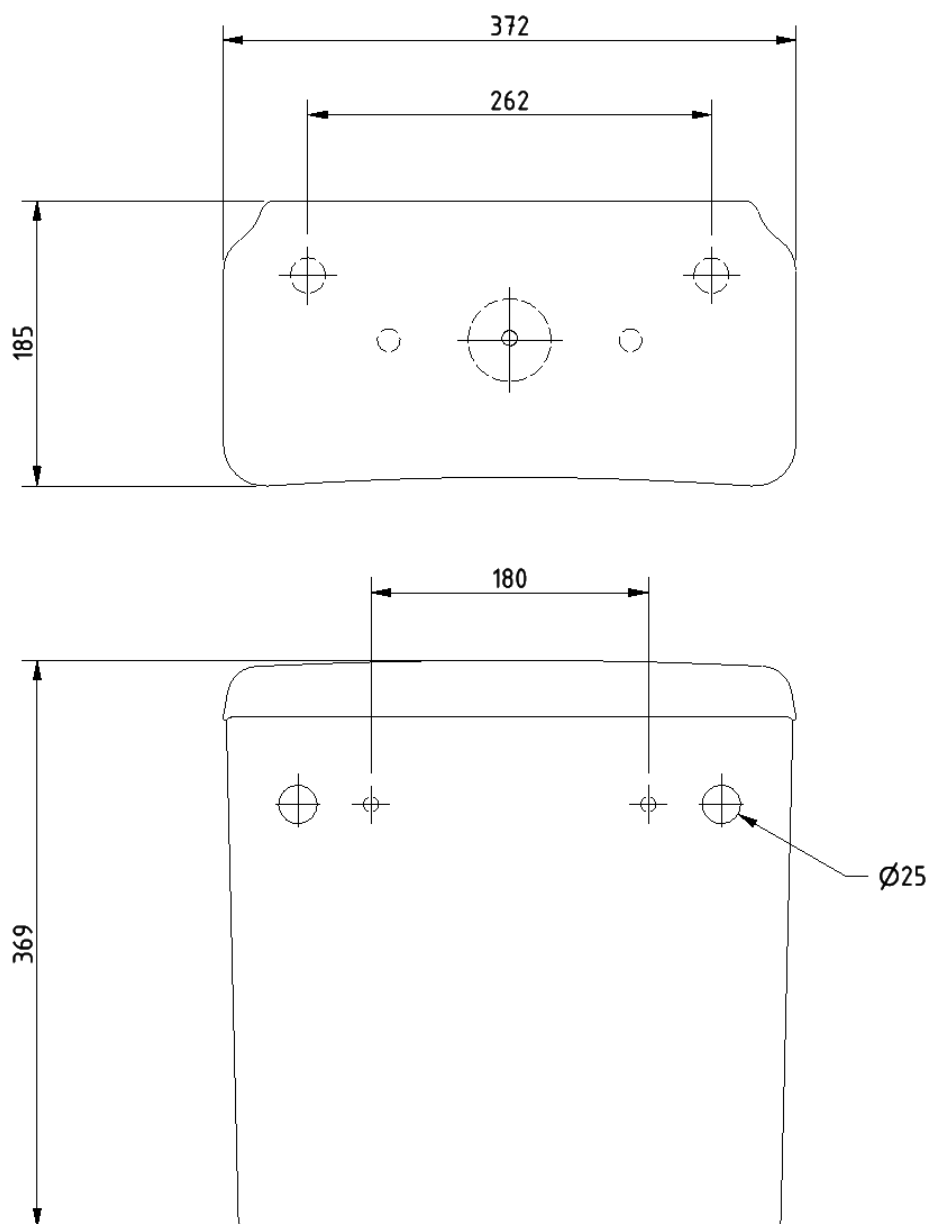
Product description

- Minimal close coupled cistern, white
- Minimal close coupled cistern with lockable lid, white

Product code

- BWCISTCC-SAN
- BWCISTCC/LC-SAN

Dimensions (mm)



Cistern fitting pack for close coupled rimless pan



Product details

Warranty: 2 years

Max load: N/A

Doc M compliant: Yes

Suitable for wet areas: Yes

Features

- Inlet valve and syphon Reg 4 Certified (WRAS, NSF, Kiwa, etc.)
- Can provide both full and half flush
- Doc M spatula lever to provide easy operation for users with limited dexterity
- 6 litre flush

Product description

Product code

Cistern fitting pack for close coupled rimless pan, includes lever and basin waste

SANCCPK-4

Pack contents

- 1 x Inlet valve
- 1 x Syphon
- 1 x Doc M spatula lever
- 2 x Cistern blanking plugs
- 1 x Close coupled fixing bolts
- 1 x Tap hole stopper
- 1 x Basin waste

Need some product advice? Contact our team of product specialists

+44(0)1642 710 719 | sales@fitzroyoflondon.com

www.fitzroyoflondon.com

DAT-SANCCPK-4 Doc Rev 1

Fitzroy of London may occasionally need to change specification of products and/or kit contents and reserves the right to do so.

Standard Doc M basin



Product details

Warranty: Lifetime

Max load: N/A

Doc M compliant: Yes

Suitable for wet areas: Yes

Features

- Two tap holes or central tap hole options available
- Compact design to maximise space for a wheelchair user
- Complies with Part M of the Building Regulations (two tap hole only)
- Wall fixings included
- No overflow

Finish options



Product description

Standard Doc M basin, two tap holes, no overflow, white

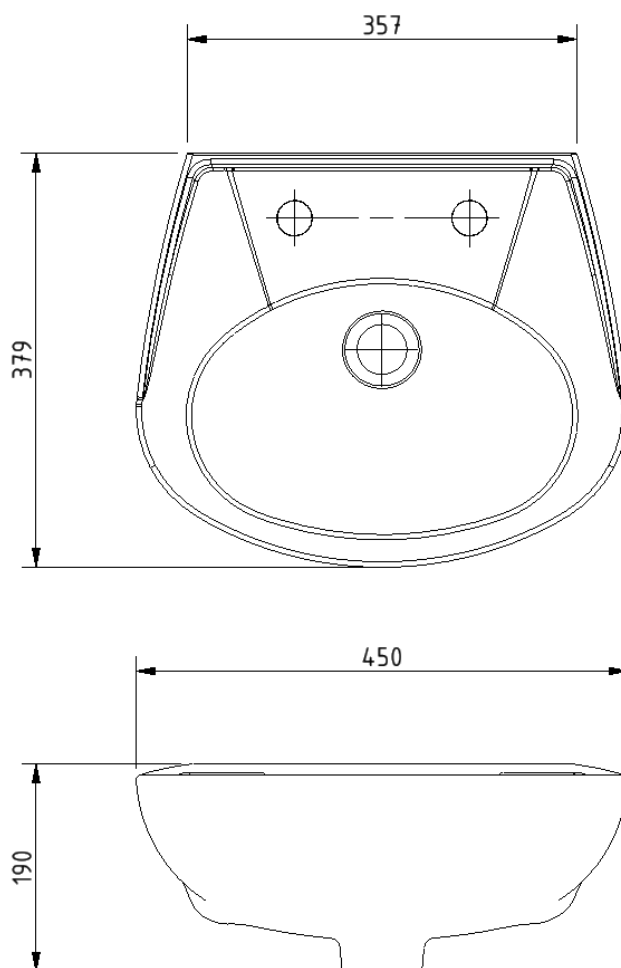
Standard Doc M basin, central tap hole, no overflow, white

Product code

B-BWBASIN-SAN

B-BASI1TH-SAN

Dimensions (mm)



FOR TAP HOLE POSITION DIMENSIONS SEE PRODUCT SPECIFIC MARKETING DRAWING

Polished chrome sequential basin mixer tap



Product details

Warranty:	2 years
Max load:	N/A
Doc M compliant:	Yes
Suitable for wet areas:	Yes
Flexi tap tail connection (to tap body):	M10 thread
Flexi tap tail (onward connection):	½ inch BSP

Features

- Reg 4 certified (WRAS, NSF, Kiwa, etc.)
- Easy operation for users with limited dexterity
- Cold start

Finish options



CP
Polished Chrome

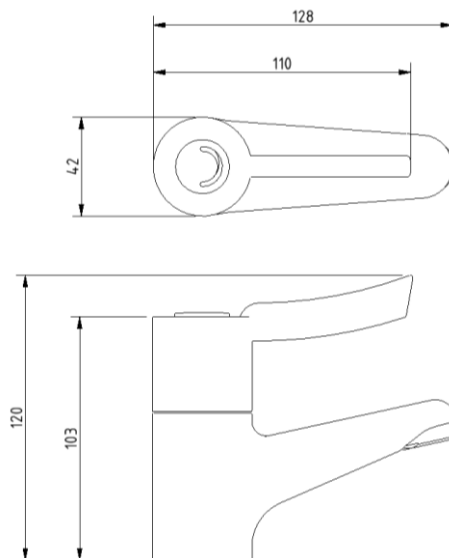
Product description

Sequential basin mixer tap, polished chrome

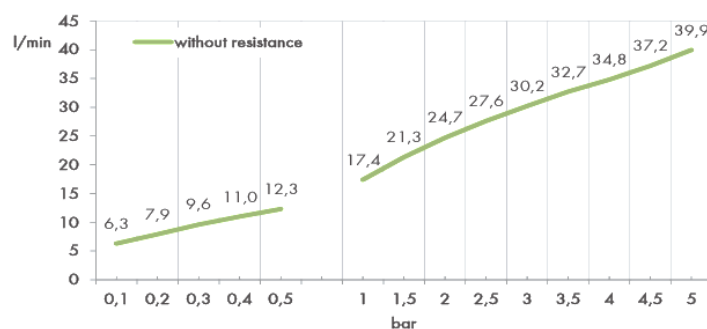
Product code

BPLMON

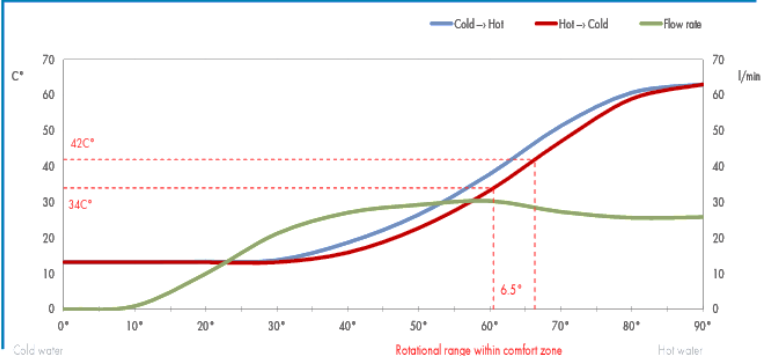
Dimensions (mm)



FLOW RATE CURVE



FLOW RATE & HYSTERESIS CURVES



Doc M rail only pack with exposed fixing steel grab rails



Product details

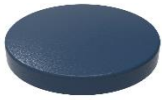
Warranty:	See individual products
Max load:	See individual products
Doc M compliant:	Yes
Suitable for wet areas:	No

Features

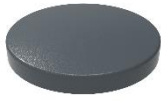
- Complies with Part M of the Building Regulations
- Simple one box solution

Finish options

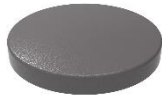
Powder Coated



DB
Dark Blue (RAL 5011)



DG
Dark Grey (RAL 7016)



GY
Grey (RAL 7006)



WH
White (RAL 9016)

Product description

Rail only Doc M toilet pack, steel, exposed fixings

Product code

BCCDMT-0/**

Replace ** with 2-character short code for chosen finish (Powder Coated).
e.g., BCCDMT-0/DB

Pack contents

- 5 x 600mm coated steel grab rails with exposed fixings
- 1 x 800mm coated steel hinged support rail with toilet roll holder

Dimensions (mm)

See individual products