

Rail only Doc M toilet pack with concealed fixing stainless steel grab rails



Product details

Warranty:	See individual products
Max load:	See individual products
Doc M compliant:	Yes
Suitable for wet areas:	Yes

Features

- Complies with Part M of the Building Regulations
- Concealed fixing stainless steel grab rails
- Stainless steel hinged support rail
- Simple one box solution

Finish options

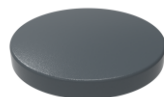
Powder Coated



DB
Dark Blue (RAL 5011)



GY
Grey (RAL 7005)



DG
Dark Grey (RAL 7016)



WH
White (RAL 9016)

Mechanical



SP
Polished Stainless Steel



SS
Satin Stainless Steel

Product description

Rail only Doc M toilet pack, stainless steel, concealed fixings

Product code

230005/**

Replace ** with 2-character code for chosen finish (Powder Coated / Mechanical).
e.g., 230005/DB

Pack Contents

- 4 x 600mm stainless steel grab rails with concealed fixings
- 1 x 450mm stainless steel grab rail with concealed fixings
- 1 x 800mm stainless steel hinged support rail

Dimensions (mm)

See individual products

Stainless steel grab rail with concealed fixings, 35mm diameter tube



Product details

Warranty:	5 Years
Max load:	185 kg
Doc M compliant:	Yes
Suitable for wet areas:	Yes

Features

- Stainless steel construction
- Durable powder coated finish
- Concealed fixing

Finish options

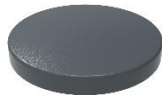
Powder coated



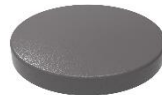
WH
White (RAL 9016)



DB
Dark Blue (RAL 5011)



DG
Dark Grey (RAL 7016)



GY
Grey (RAL 7005)

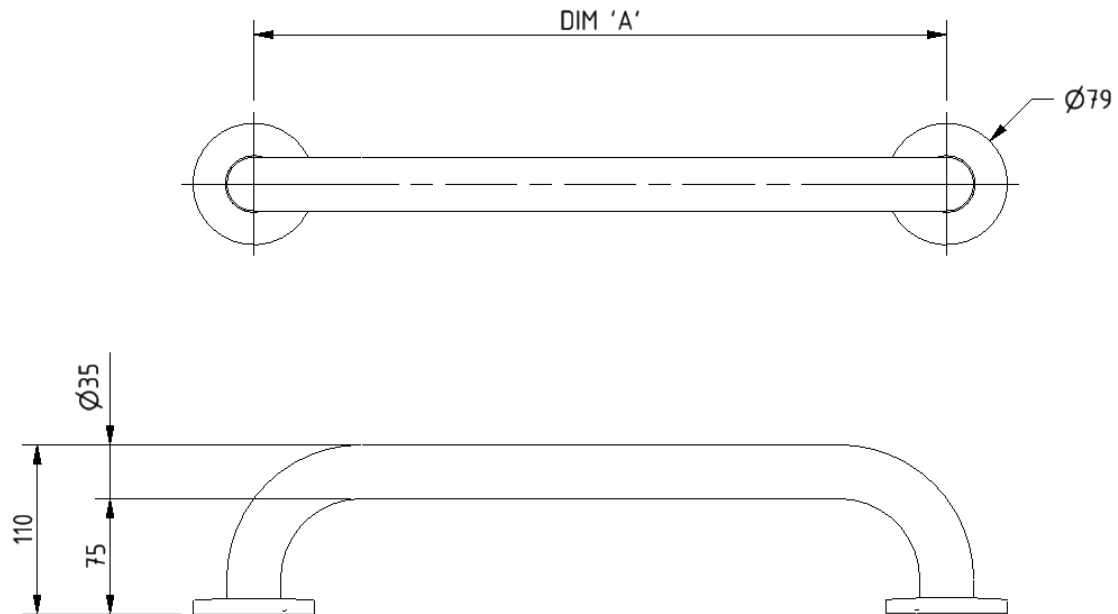
Product description

Product code

Grab rail, stainless steel, concealed fixings, 35mm diameter, 300mm	210130/**
Grab rail, stainless steel, concealed fixings, 35mm diameter, 450mm	210145/**
Grab rail, stainless steel, concealed fixings, 35mm diameter, 600mm	210160/**
Grab rail, stainless steel, concealed fixings, 35mm diameter, 900mm	210190/**

Replace ** with 2-character short code for chosen finish.
e.g., 210130/WH

Dimensions (mm)



PRODUCT CODE	210130/**	210145/**	210160/**	210190/**
DIM 'A'	300	450	600	900

Stainless steel lift and lock hinged support rail



Product details

Warranty: 5 years

Max load: 135 kg

Doc M compliant: Yes (800mm only)

Suitable for wet areas: Yes

Features

- Complies with Part M of the Building Regulations
- Lift and lock folding mechanism
- Non-corrosive stainless steel construction
- Toilet roll holder (optional)

Finish options

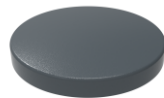
Powder Coated



DB
Dark Blue (RAL 5011)



GY
Grey (RAL 7005)



DG
Dark Grey (RAL 7016)



WH
White (RAL 9016)

Mechanical



SP
Polished Stainless Steel



SS
Satin Stainless Steel

Product description

Product code

Hinged lift and lock support rail, stainless steel, 650mm

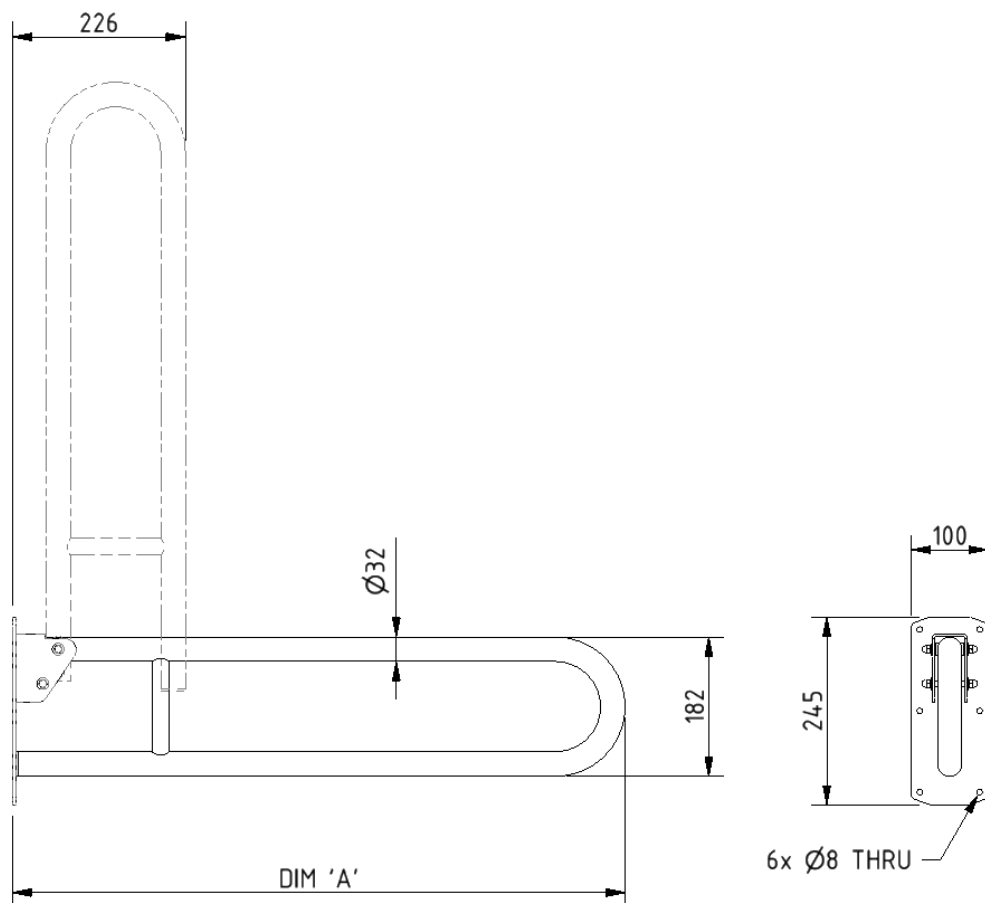
211865/**

Hinged lift and lock support rail, stainless steel, 800mm

211880/**

Replace ** with 2-character code for chosen finish (Powder Coated / Mechanical).
e.g., 211865/DB

Dimensions (mm)



PRODUCT CODE	211865/**	211880/**
DIM 'A'	650	800