

Luxury straight stainless steel concealed fixing grab rail



Product details

| | |
|--------------------------------|---------|
| Warranty: | 5 Years |
| Max load: | 150 kg |
| Doc M compliant: | Yes |
| Suitable for wet areas: | Yes |

Features

- High quality stainless steel construction
- Concealed fixing grab rails
- Complies with Doc M of the Building Regulations
- Stylish 'T-Bar' design

Finish options

Mechanical



SS
Satin Stainless Steel



SP
Polished Stainless Steel

Powder Coated



MB
Matt Black (RAL 9005)

Product description

Product code

Luxury straight, stainless steel concealed fixing grab rail, 300mm

F22-0300-LSC-**

Luxury straight, stainless steel concealed fixing grab rail, 450mm

F22-0450-LSC-**

Luxury straight, stainless steel concealed fixing grab rail, 600mm

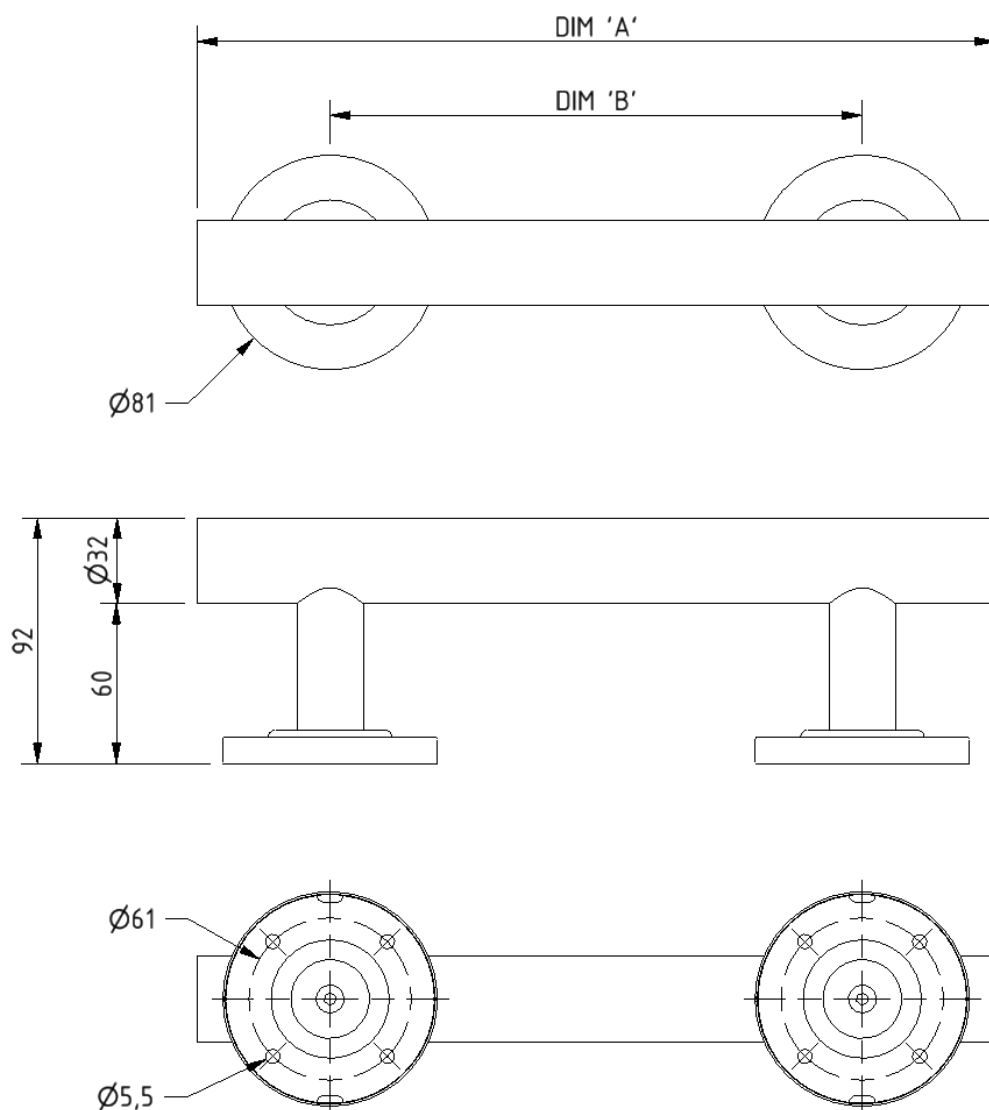
F22-0600-LSC-**

Luxury straight, stainless steel concealed fixing grab rail, 900mm

F22-0900-LSC-**

Replace ** with 2-character short code for chosen finish (Mechanical / Powder Coated).
e.g., F22-0300-LSC-SS

Dimensions (mm)



| PRODUCT CODE | F22-0300-LSC | F22-0450-LSC | F22-0600-LSC | F22-0900-LSC |
|--------------|--------------|--------------|--------------|--------------|
| DIM 'A' | 300 | 450 | 600 | 900 |
| DIM 'B' | 200 | 300 | 450 | 750 |