

## Back to wall Doc M ware set with ring only seat and back box



### Product details

Warranty:	See individual products
Max load:	See individual products
Doc M compliant:	Yes
Suitable for wet areas:	No

### Features

- Complies with Part M of the Building Regulations
- Inlet valve and syphon Reg 4 Certified (WRAS, NSF, Kiwa, etc.)
- Easy to build, flat pack solution for back box
- Universal - suitable for left or right handed transfer

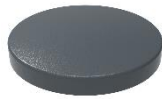
### Finish options



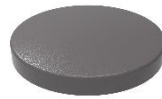
**WH**  
White (RAL 9016)



**DB**  
Dark Blue (RAL 5011)



**DG**  
Dark Grey (RAL 7016)



**GY**  
Grey (RAL 7005)

### Product description

Back to wall Doc M ware set, back box, pan & cistern assembly, ring only seat

### Product code

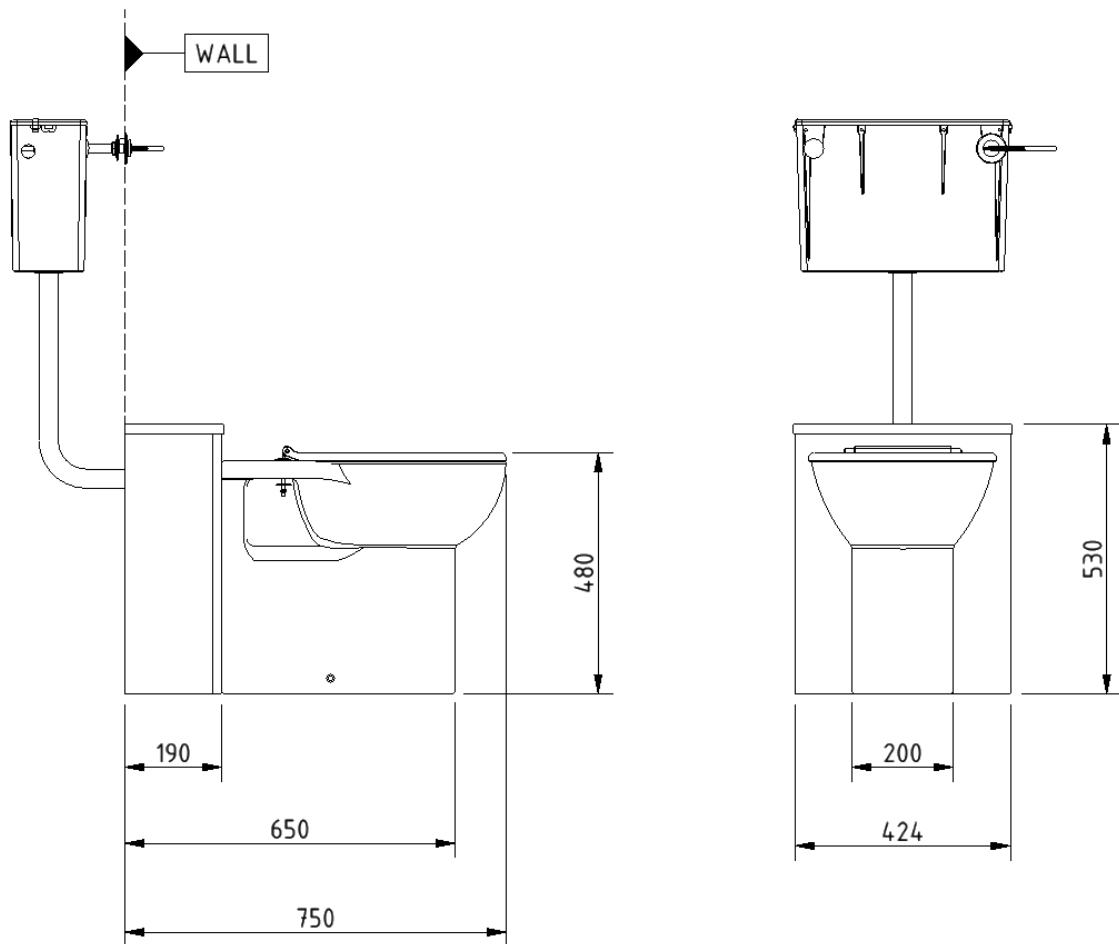
NY02-SW-31010-\*\*

Replace \*\* with 2-character short code for chosen finish.  
e.g., NY02-SW-31010-DB

### Pack contents

- 1 x Back to wall box rim Doc M pan
- 1 x Back box for back to wall Doc M pan
- 1 x Concealed cistern with fittings, flush pipe, and Doc M concealed cistern spatula lever
- 1 x Ring only toilet seat

### Dimensions (mm)



## Back to wall box rim Doc M pan



### Product details

<b>Warranty:</b>	Lifetime
<b>Max load:</b>	400 kg
<b>Doc M compliant:</b>	Yes
<b>Suitable for wet areas:</b>	Yes

### Features

- Complies with Part M of the Building Regulations when used in conjunction with back box (BPLBOX)
- UKCA and CE compliant
- Comfort height to allow easier side transfer from wheelchair

## Finish options



**WH**  
White (RAL 9016)

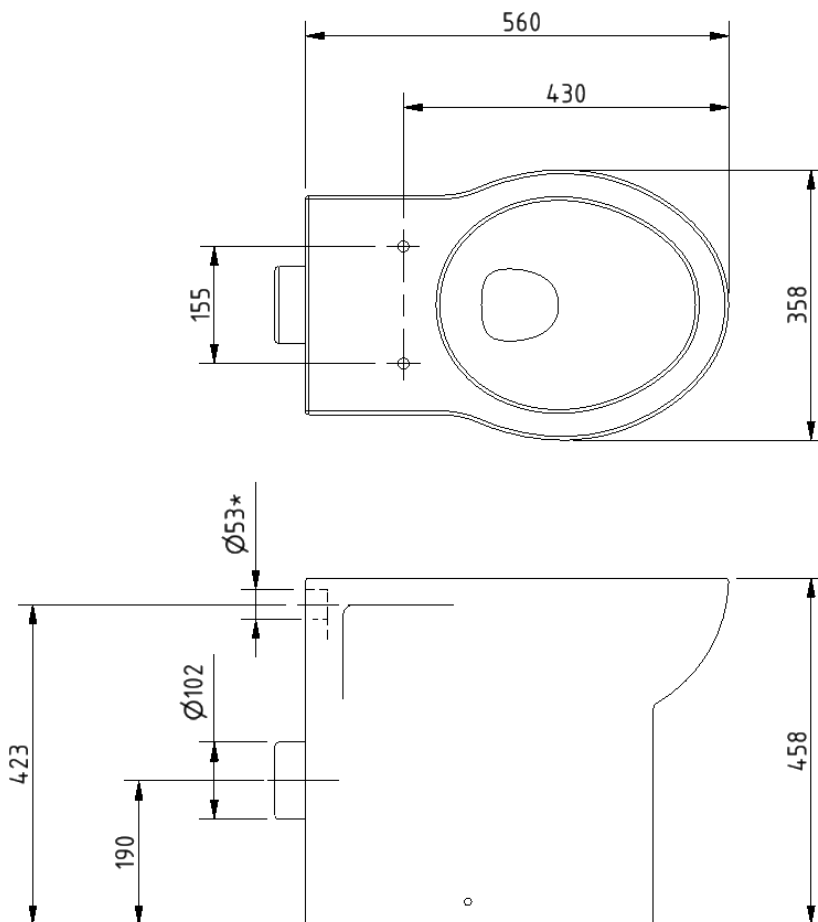
## Product description

Back to wall box rim Doc M pan

## Product code

NY01-SW-31000-WH

## Dimensions (mm)



\*USE WITH  $\varnothing 38$ MM DIAMETER FLUSH PIPE

## Concealed cistern and fittings



### Product details

**Warranty:** 2 years

**Max load:** N/A

**Doc M compliant:** N/A

**Suitable for wet areas:** Yes

### Features

- Syphon and inlet valve Reg 4 Certified (WRAS, NSF, Kiwa, etc.)
- Top access
- 6 litre flush
- Internal / external overflow warning
- High density polystyrene construction

Does not come with flush lever or flush pipe

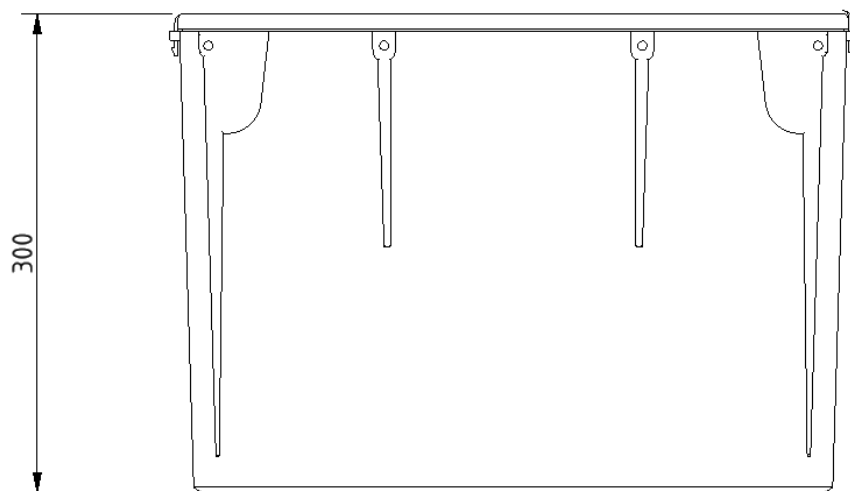
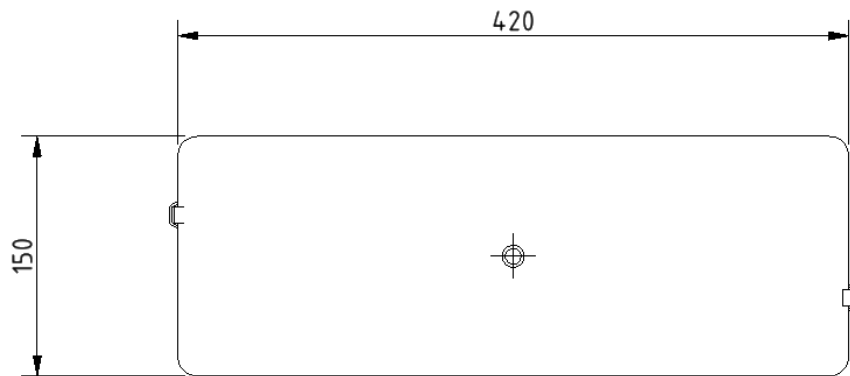
### Product description

Concealed cistern and fittings, no lever or flush pipe

### Product code

B-CISTHIDE

Dimensions (mm)



## Concealed cistern spatula lever



### Product details

**Warranty:** 2 years

**Max load:** N/A

**Doc M compliant:** Yes

**Suitable for wet areas:** Yes

### Features

- Complies with Part M of the Building Regulations
- Easy operation for users with limited dexterity
- For use with concealed cisterns

### Finish options

#### Powder Coated



**CP**  
Polished Chrome

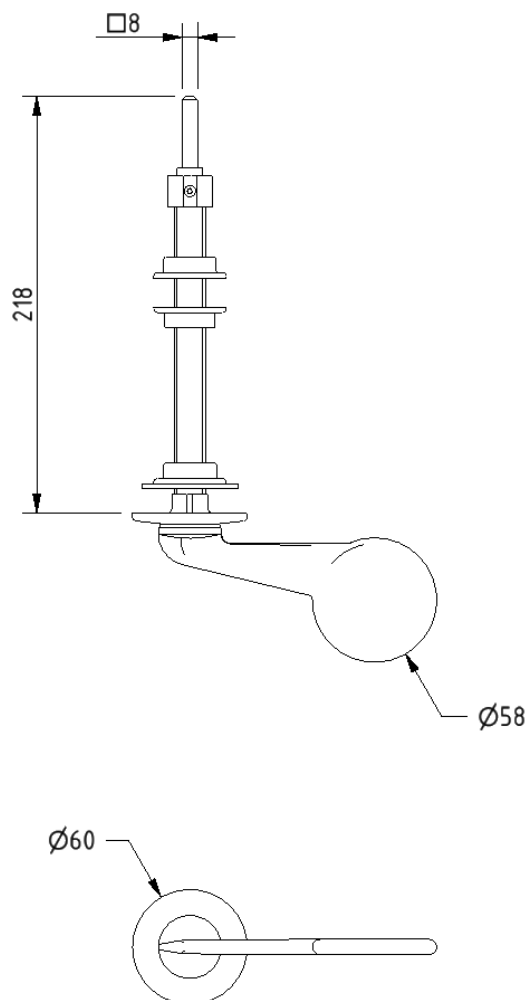
### Product description

Concealed cistern spatula lever, 215mm spindle, polished chrome

### Product code

P-000243-X00X

Dimensions (mm)





## Toilet seat, ring only, stainless steel pillar hinge



### Product details

**Warranty:** 2 years

**Max load:** 150 kg

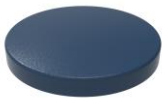
**Doc M compliant:** Yes

**Suitable for wet areas:** Yes

### Features

- Complies with Part M of the Building Regulations
- Anti-bacterial, strong and durable Duroplast seat
- Ergonomic and comfortable shape
- Stainless steel hinge (bottom fix as standard)  
Additional hinge pack to convert to top fix: NY-TOPFIXHINGE
- Adjustable locating buffers
- Fits close coupled, low level, back to wall and wall hung pans

### Finish options



**DB**  
Dark Blue (RAL 5011)



**DG**  
Dark Grey (RAL 7016)



**GY**  
Grey (RAL 7005)



**WH**  
White (RAL 9016)

### Product description

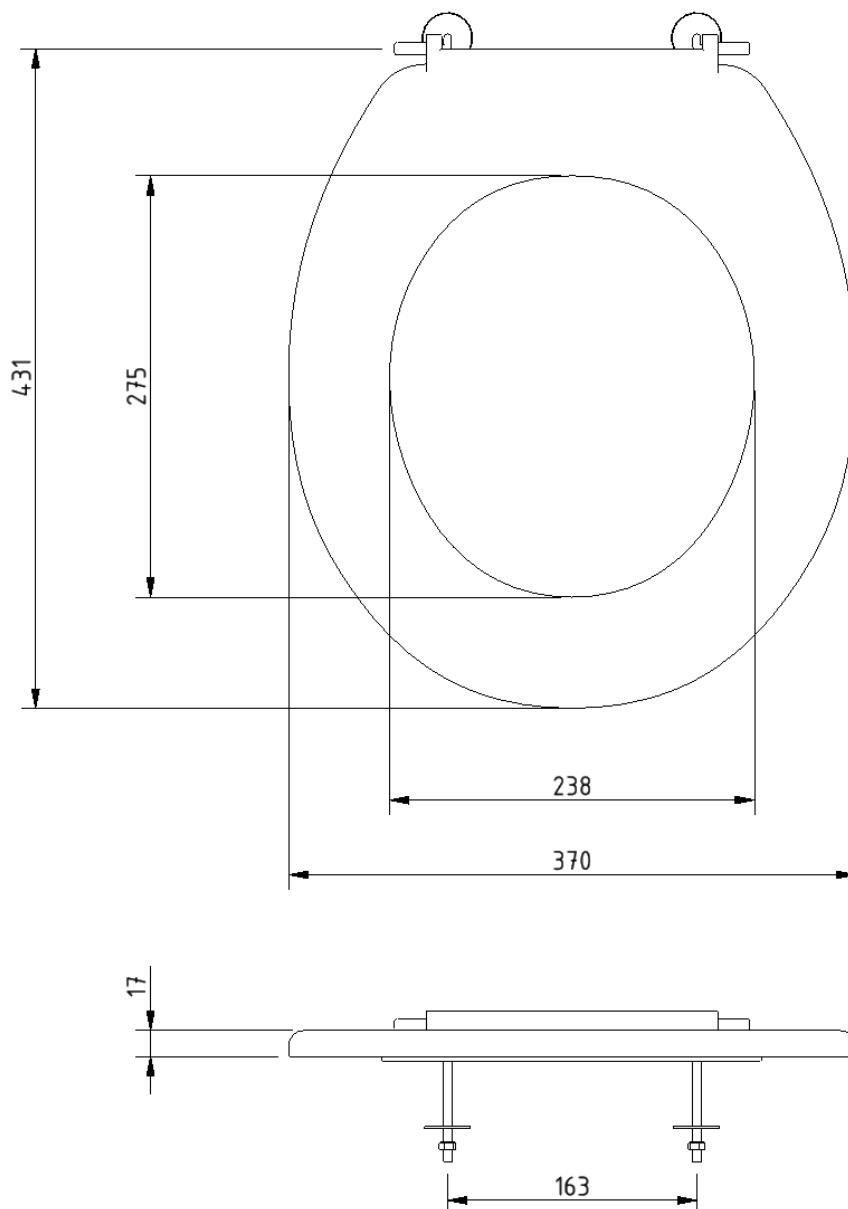
Toilet seat, ring only, stainless steel pillar hinge

### Product code

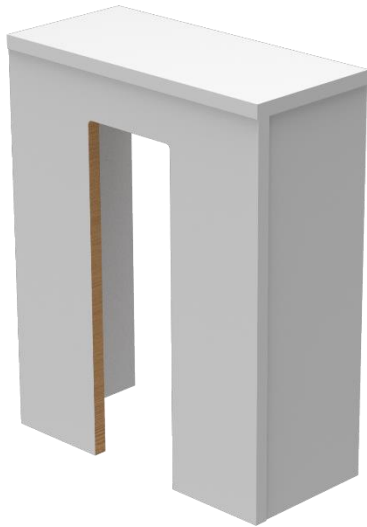
260015/\*\*

Replace \*\* with 2-character short code for chosen finish.  
e.g., 260015/DB

Dimensions (mm)



## Back box for back to wall pan



### Product details

**Warranty:** 2 years

**Max load:** N/A

**Doc M compliant:** Yes

**Suitable for wet areas:** No

### Features

- Easy to install flat pack solution
- Solid melamine faced chipboard construction
- For use with back to wall pan to aid compliance with Part M of the Building Regulations

### Finish options



**WH**  
White (RAL 9016)

### Product description

Back box for back to wall pan, white

### Product code

BPLBOX

Dimensions (mm)

