

Wall hung Doc M ware set with ring only seat



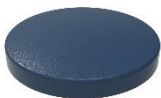
Product details

Warranty:	See individual products
Max load:	See individual products
Doc M compliant:	Yes
Suitable for wet areas:	Yes

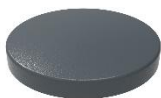
Features

- Complies with Part M of the Building Regulations
- Inlet valve and syphon Reg 4 Certified (WRAS, NSF, Kiwa, etc.)
- Universal - suitable for left or right handed transfer

Finish options



DB
Dark Blue (RAL 5011)



DG
Dark Grey (RAL 7016)



GY
Grey (RAL 7006)



WH
White (RAL 9016)

Product description

Wall hung Doc M ware set, pan & cistern assembly, ring only seat

Product code

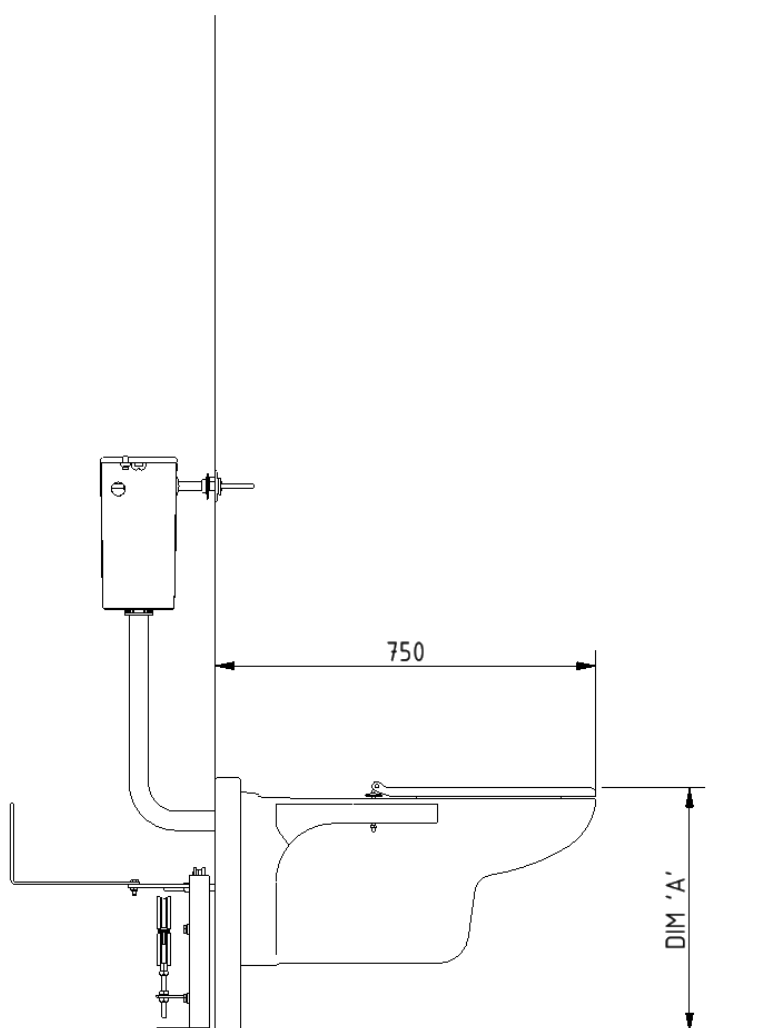
NY03-SW-41010-**

Replace ** with 2-character short code for chosen finish.
e.g., NY03-SW-41010-DB

Pack contents

- 1 x Wall hung box rim Doc M pan
- 1 x Floor mounting frame for wall hung pan
- 1 x Concealed cistern with fittings, flush pipe, and Doc M concealed cistern spatula lever
- 1 x Ring only toilet seat

Dimensions (mm)



HEIGHT ADJUSTABILITY		
DIM 'A'	350mm MIN	510mm MAX

Note: Spacing box between pan and wall is not provided by Fitzroy of London, this is required to achieve the 750mm dimension.

Recommend to push the frame up against the inside of built out area if building wall out.

Fitzroy of London may occasionally need to change specification of products and/or kit contents and reserves the right to do so. We strive to keep our documentation up to date; however, we cannot guarantee this. We accept no liability for any information given on this data sheet.

Wall hung Doc M pan



Product details

Warranty:	5 years
Max load:	N/A
Doc M compliant:	No
Suitable for wet areas:	Yes

Features

- Extended projection to aid compliance with Part M of the Building Regulations
- UKCA and CE compliant
- Contemporary feel
- Box rim ran

For 750mm projection, wall should be built out by 50mm

Finish options



WH
White

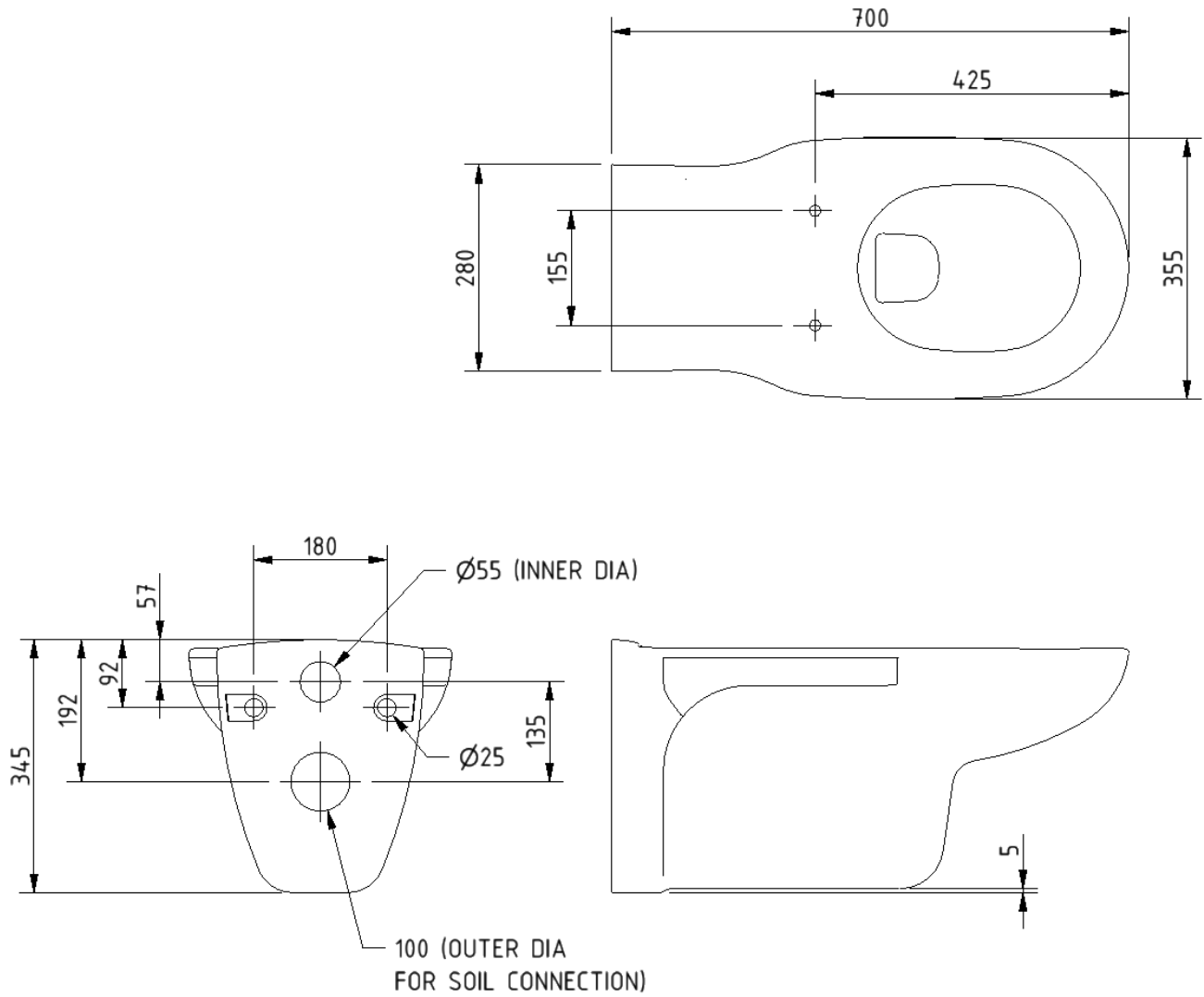
Product description

Wall hung Doc M pan, 700mm projection, no fixings, white

Product code

PANWH70

Dimensions (mm)



Toilet seat, ring only, stainless steel pillar hinge



Product details

Warranty: 2 years

Max load: 150 kg

Doc M compliant: Yes

Suitable for wet areas: Yes

Features

- Complies with Part M of the Building Regulations
- Anti-bacterial, strong and durable Duroplast seat
- Ergonomic and comfortable shape
- Stainless steel hinge (bottom fix as standard)
Additional hinge pack to convert to top fix: NY-TOPFIXHINGE
- Adjustable locating buffers
- Fits close coupled, low level, back to wall and wall hung pans

Finish options



DB
Dark Blue (RAL 5011)



DG
Dark Grey (RAL 7016)



GY
Grey (RAL 7005)



WH
White (RAL 9016)

Product description

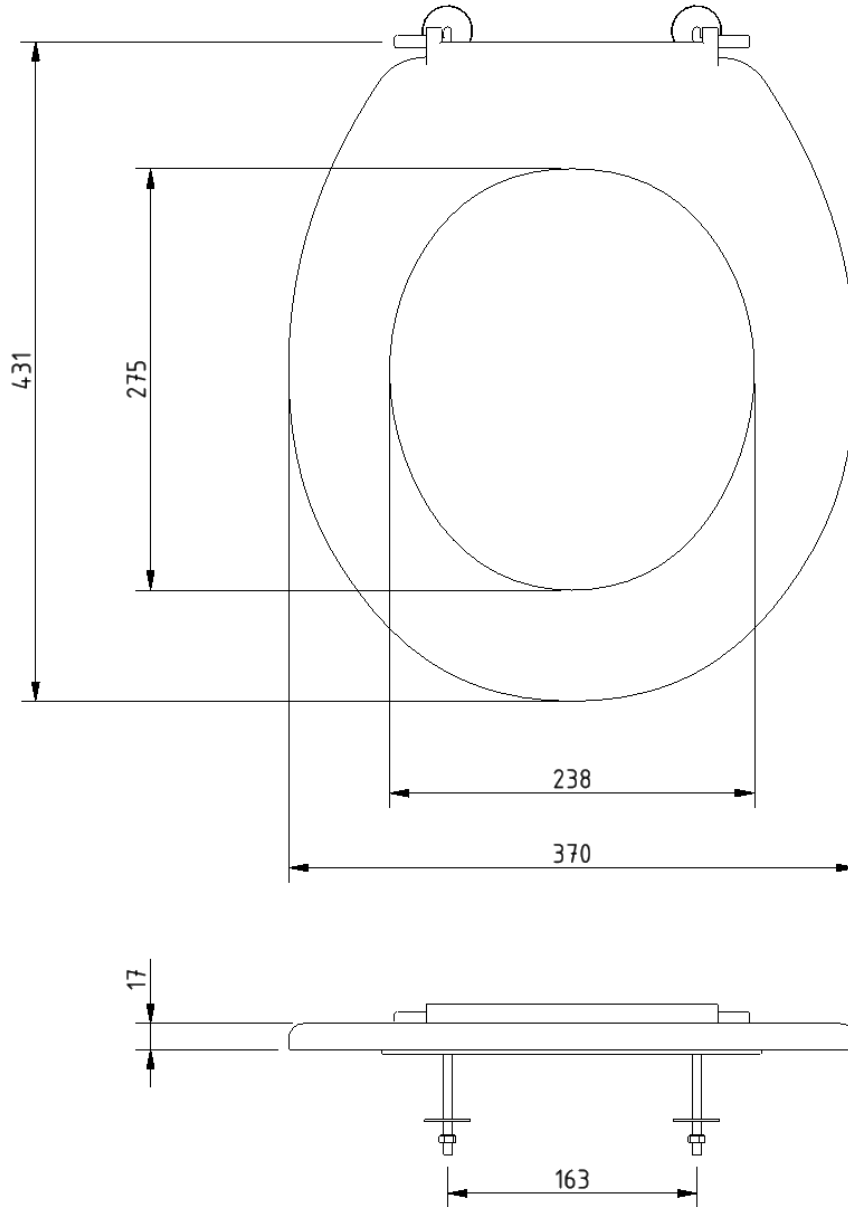
Toilet seat, ring only, stainless steel pillar hinge

Product code

260015/**

Replace ** with 2-character short code for chosen finish.
e.g., 260015/DB

Dimensions (mm)



Concealed cistern and fittings



Product details

Warranty: 2 years

Max load: N/A

Doc M compliant: N/A

Suitable for wet areas: Yes

Features

- Syphon and inlet valve Reg 4 Certified (WRAS, NSF, Kiwa, etc.)
- Top access
- 6 litre flush
- Internal / external overflow warning
- High density polystyrene construction

Does not come with flush lever or flush pipe

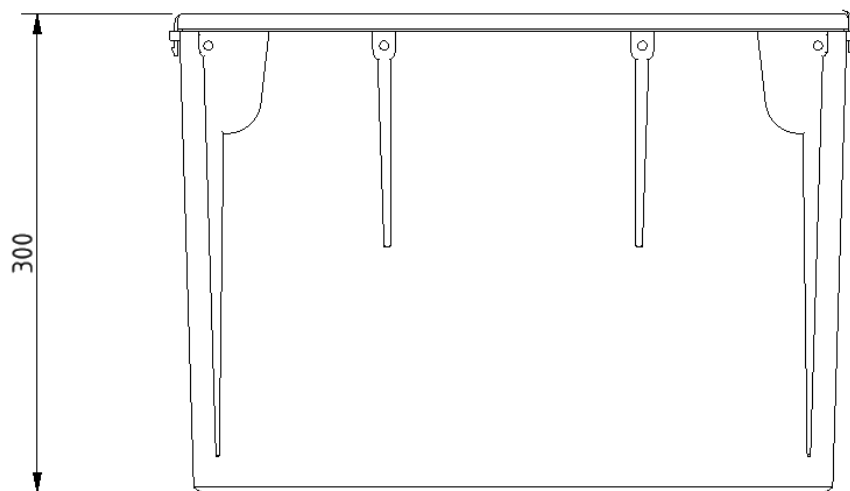
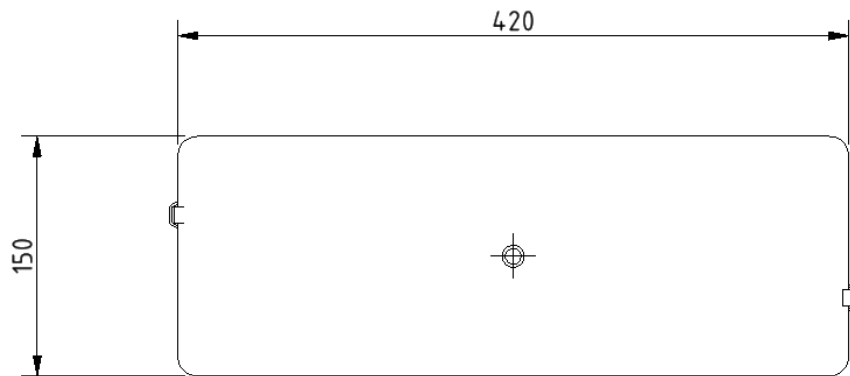
Product description

Concealed cistern and fittings, no lever or flush pipe

Product code

B-CISTHIDE

Dimensions (mm)



Low frame unit for wall hung pan



Product details

Warranty: 5 years

Max load: 400 kg

Doc M compliant: Yes

Suitable for wet areas: Yes

Features

- Comes with flush pipe and WC pan connector clamps
- Adjustable legs for WC pan height fixing flexibility
- Wall and floor fixing brackets can be fixed through 180 degrees and 360 degrees to simplify installation
- Strong steel square hollow construction
- Load tested to 4kN for compliance with BS EN 997

Finish options

- As standard:**
- Blue powder coated
 - Zinc plated wall and floor brackets

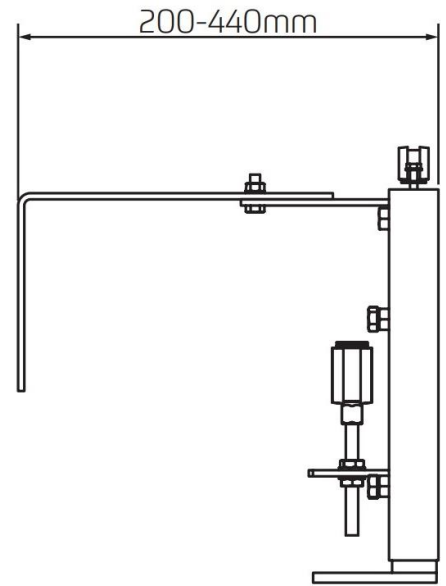
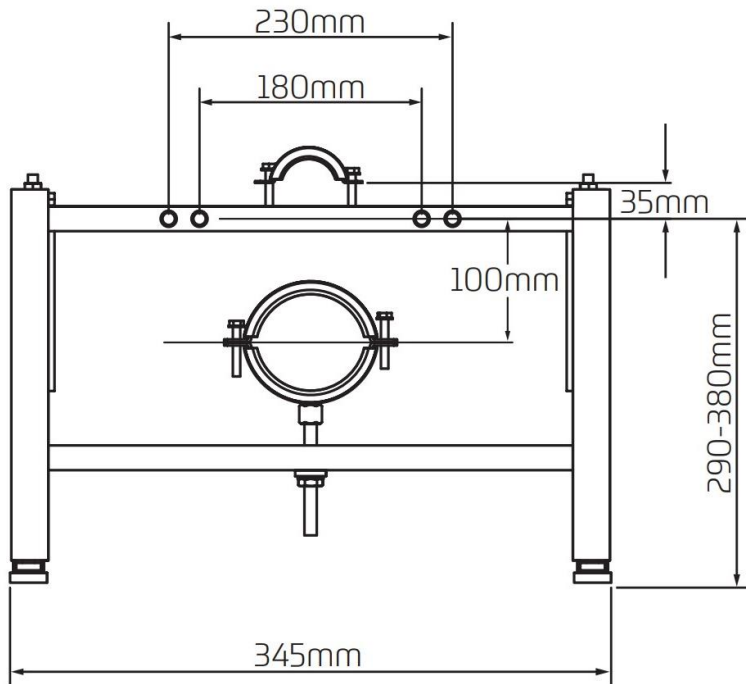
Product description

Low frame unit for wall hung pan

Product code

B-WALLHUNGFRAME

Dimensions (mm)



*For distances between 160-200mm the brackets will need to be reduced in length by cutting.

Concealed cistern spatula lever



Product details

Warranty: 2 years

Max load: N/A

Doc M compliant: Yes

Suitable for wet areas: Yes

Features

- Complies with Part M of the Building Regulations
- Easy operation for users with limited dexterity
- For use with concealed cisterns

Finish options

Powder Coated



CP
Polished Chrome

Product description

Concealed cistern spatula lever, 215mm spindle, polished chrome

Product code

P-000243-X00X

Dimensions (mm)

