

Doc M changing room pack with stainless steel concealed fixing grab rails



Product details

| | |
|--------------------------------|-------------------------|
| Warranty: | See individual products |
| Max load: | See individual products |
| Doc M compliant: | Yes |
| Suitable for wet areas: | Yes |

Features

- Complies with Part M of the Building Regulations
- Concealed fixing stainless steel grab rails
- All components are available as individual products
- Simple one box solution

Finish options

Mechanical



SP

Polished Stainless Steel



SS

Satin Stainless Steel

Product description

Doc M changing room pack, stainless steel, concealed fixings

Product code

230401/**

Replace ** with 2-character short code for chosen finish (Mechanical).
e.g., 230401/SP

Stainless steel lift and lock hinged support rail



Product details

Warranty: 5 years

Max load: 135 kg

Doc M compliant: Yes (800mm only)

Suitable for wet areas: Yes

Features

- Complies with Part M of the Building Regulations
- Lift and lock folding mechanism
- Non-corrosive stainless steel construction
- Toilet roll holder (optional)

Finish options

Powder Coated



DB
Dark Blue (RAL 5011)



GY
Grey (RAL 7005)



DG
Dark Grey (RAL 7016)



WH
White (RAL 9016)

Mechanical



SP
Polished Stainless Steel



SS
Satin Stainless Steel

Product description

Product code

Hinged lift and lock support rail, stainless steel, 650mm

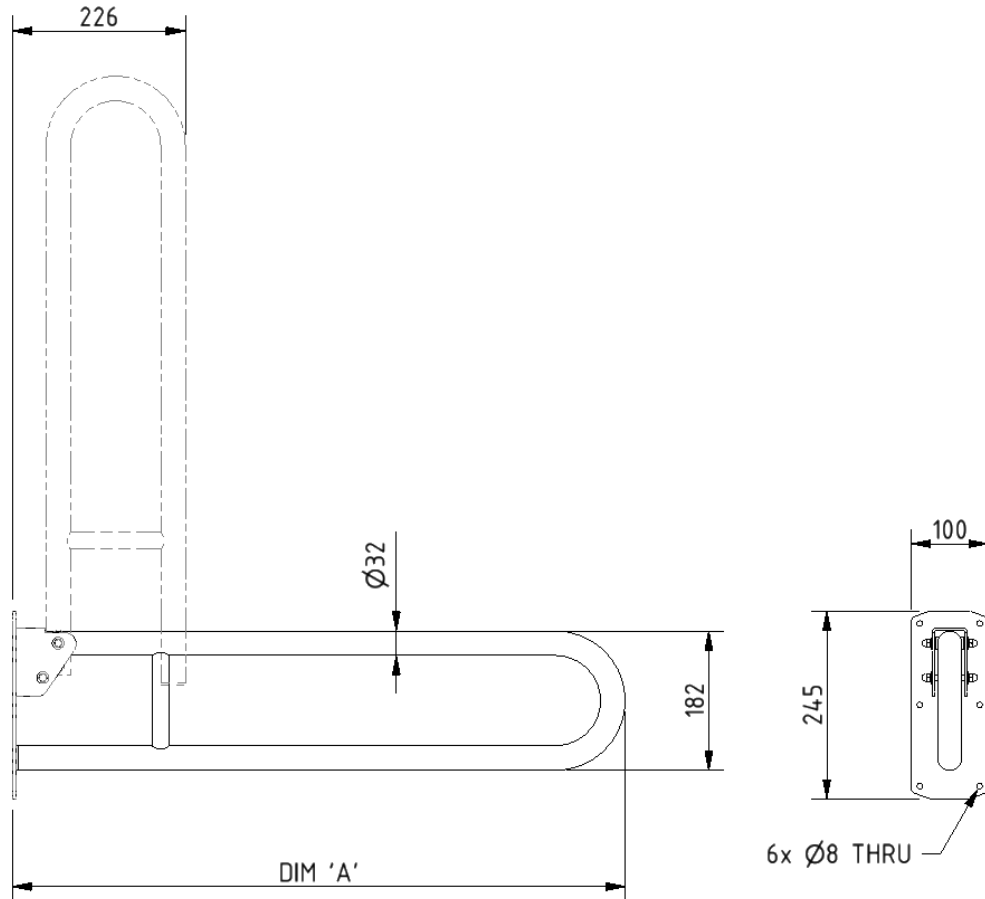
211865/**

Hinged lift and lock support rail, stainless steel, 800mm

211880/**

Replace ** with 2-character code for chosen finish (Powder Coated / Mechanical).
e.g., 211865/DB

Dimensions (mm)



| PRODUCT CODE | 211865/** | 211880/** |
|--------------|-----------|-----------|
| DIM 'A' | 650 | 800 |

Round flange stainless steel grab rail with concealed fixings, 32mm diameter



Product details

Warranty: 5 Years

Max load: 200 kg

**Doc M
compliant:** Yes

**Suitable for wet
areas:** Yes

Features

- Stainless steel construction
- Concealed fixings
- Complies with Part M of the Building Regulations

Finish options



SP
Polished Stainless Steel



SS
Satin Stainless Steel

Product description

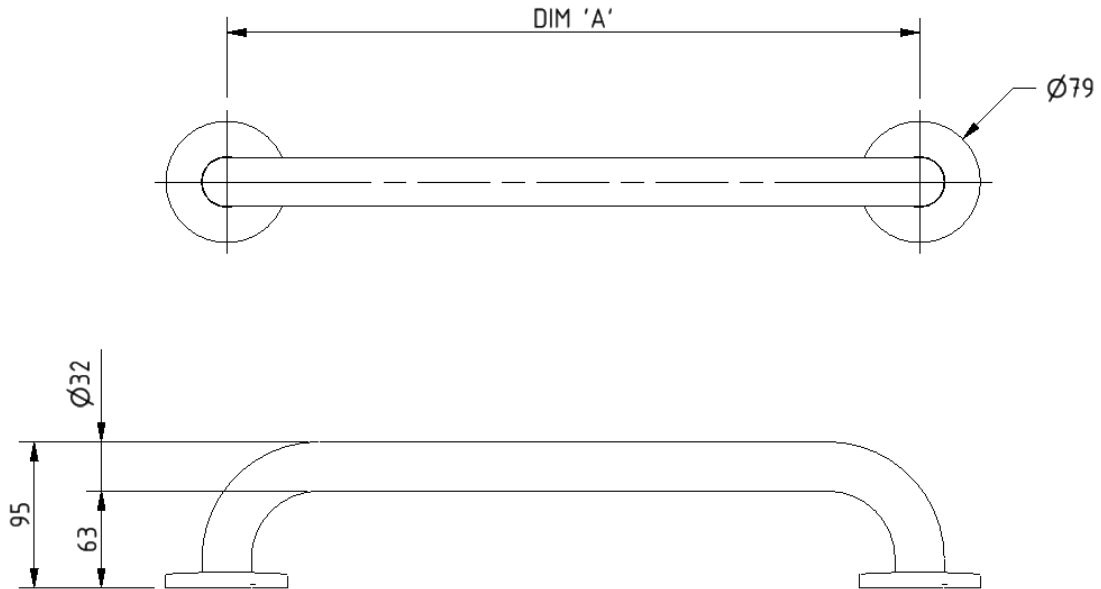
Grab rail, stainless steel, concealed fixings, 32mm diameter, 300mm
 Grab rail, stainless steel, concealed fixings, 32mm diameter, 450mm
 Grab rail, stainless steel, concealed fixings, 32mm diameter, 600mm
 Grab rail, stainless steel, concealed fixings, 32mm diameter, 900mm

Product code

GR-12/32C/**
 GR-18/32C/**
 GR-24/32C/**
 211090/**

Replace ** with 2-character short code for chosen finish.
 e.g., GR-12/32C/SP

Dimensions (mm)



| PRODUCT CODE | GR-12/32C** | GR-18/32C** | GR-24/32C** | 211090/** |
|--------------|-------------|-------------|-------------|-----------|
| DIM 'A' | 300 | 450 | 600 | 900 |

Wall mounted padded Doc M shower seat



Product details

Warranty: 5 years

Max load: 250 kg

Doc M compliant: Yes

Suitable for wet areas: Yes

Features

- Complies with Part M of the Building Regulations
- Extended projection to allow easier side transfer from wheelchair
- Aluminium and stainless frame
- Durable clip on plastic seat
- Adjustable height
- Drainage holes for easy-drain
- Back support for optimum comfort
- Closed cell polyurethane pad for maximum hygiene and comfort
- Foldable design

Finish options



DB
Dark Blue (RAL 5011)



GY
Grey (RAL 7005)

Product description

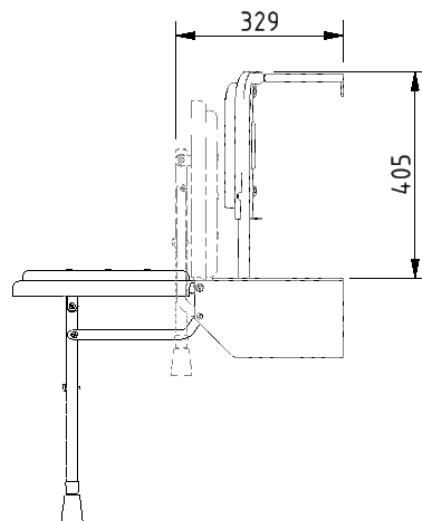
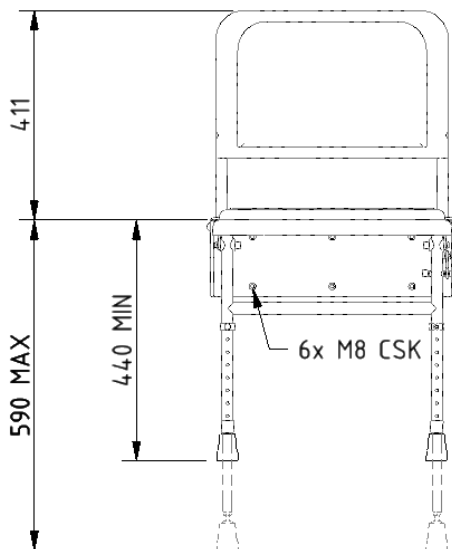
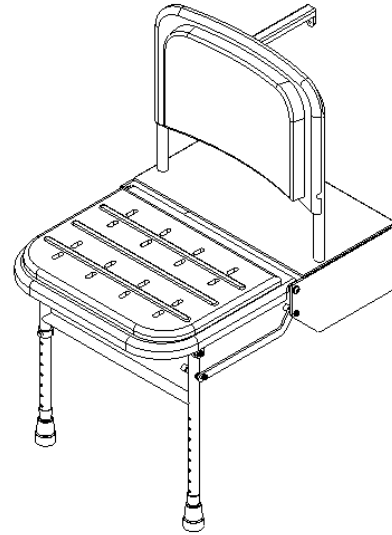
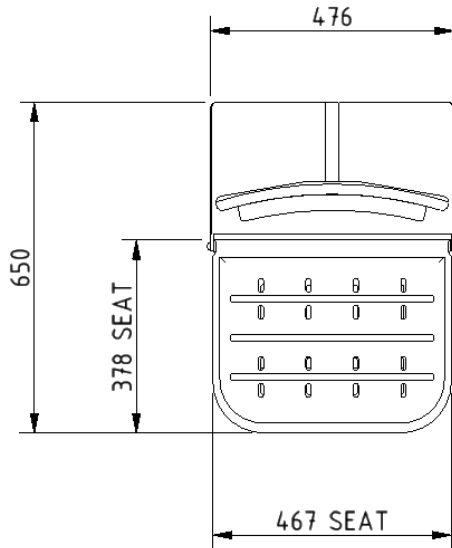
Doc M shower seat, 650mm projection, polished frame

Product code

SB-085/**

Replace ** with 2-character short code for chosen finish.
e.g., SB-085/DB

Dimensions (mm)



Single aluminium robe hook



Product details

Warranty: 2 years

Max load: N/A

Doc M compliant: Yes

Suitable for wet areas: Yes

Features

- Aluminium construction
- Colour options available for visually impaired
- Complies with Part M of the Building Regulations

Finish options

Powder Coated



DB
Dark Blue (RAL 5011)



DG
Dark Grey (RAL 7016)



GY
Grey (RAL 7005)



MB
Matt Black (RAL 9005)



WH
White (RAL 9016)

Product description

Single robe hook, aluminium

Product code

141701/**

Replace ** with 2-character short code for chosen finish (Powder Coated).
e.g., 141701/DB

Dimensions (mm)

