

Exposed valve Doc M shower pack with stainless steel concealed fixing grab rails



Product details

Warranty: See individual products

Max load: See individual products

Doc M compliant: Yes

Suitable for wet areas: Yes

Features

- Complies with Part M of the Building Regulations
- Reg 4 Certified (WRAS, NSF, Kiwa, etc.) & TMV3 approved thermostatic mixer shower with extended lever
- Extended projection shower seat to allow easier side transfer from wheelchair
- Non-corrosive concealed fixing stainless steel grab rails & hinged support rails
- Simple one box solution

Finish options

Powder Coated



DB
Dark Blue (RAL 5011)



DG
Dark Grey (RAL 7016)



GY
Grey (RAL 7005)



WH
White (RAL 9016)

Mechanical



SP
Polished Stainless Steel



SS
Satin Stainless Steel

Product description

Product code

Exposed valve Doc M shower pack, stainless steel, concealed fixings

230404/**

Replace ** with 2-character code for chosen finish (Powder Coated / Mechanical).
e.g., 230404/DB

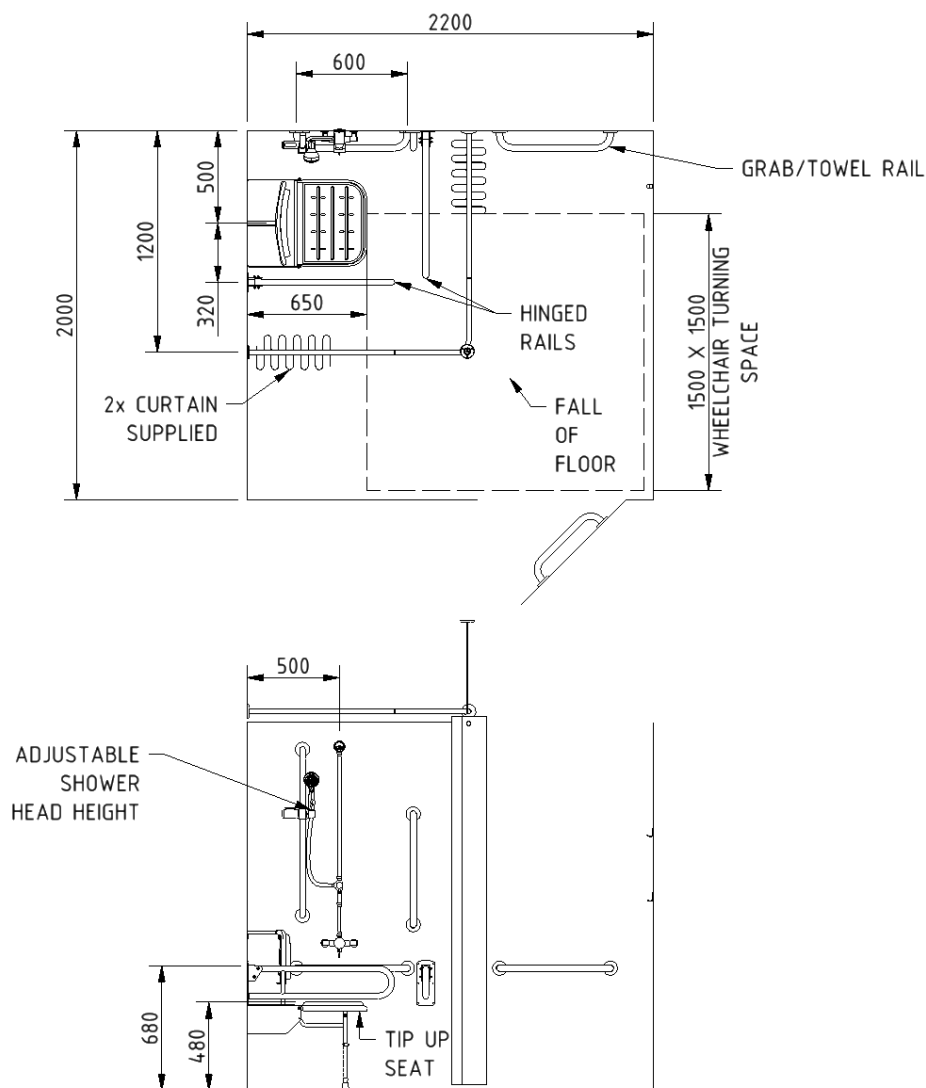
Pack contents

- 1 x Doc M shower seat
- 1 x Exposed TMV3 Doc M shower valve
- 1 x Exposed Doc M shower diverter
- 1 x Antivandal overhead shower head
- 1 x Shower head and hose
- 3 x 600mm Stainless steel grab rails with concealed fixings
- 1 x 450mm Stainless steel grab rail with concealed fixings
- 1 x 900mm Stainless steel grab rail with concealed fixings *(always SP finish)**
- 2 x 800mm Stainless steel hinged support rails
- 1 x 1200mm x 1200mm Stainless steel shower curtain rail *(always WH finish)**
- 2 x Weighted shower curtains
- 1 x Sliding Shower head bracket
- 2 x Single robe hook

**Refer to pack items for details of finishes*

Note: The exposed pipe for the overhead shower is NOT included in pack.

Dimensions (mm)



Exposed TMV3 shower valve and diverter kit



Product details

Warranty: 5 years

Max load: N/A

Doc M compliant: Yes

Suitable for wet areas: Yes

Features

- Complies with Part M of the Building Regulations
- Single sequential control for both temperature and flow
- Automatic shut off in the event of hot or cold water supply failure
- Brass construction
- TMV3 Approved & Reg 4 Certified (WRAS, NSF, Kiwa, etc.)
- The supplied pipes can be turned through 90° to allow external pipework
- Main valve inlet connections can be turned through 90° to allow external pipework

Finish options



Product description

Exposed TMV3 shower valve and diverter kit

Product code

COM-NYTS3650TOELCKIT

Pack contents

- 1 x Inline diverter
- 1 x Exposed valve
- 1 x Fixed shower head

Flo rates (l/min)

System pressure (bar)	0.2	0.5	1	2	3	5
Open outlet (mixed)	3.9	6.3	6	7	7.5	8

Specification

Maximum hot water supply temperature: 65 degrees Celsius

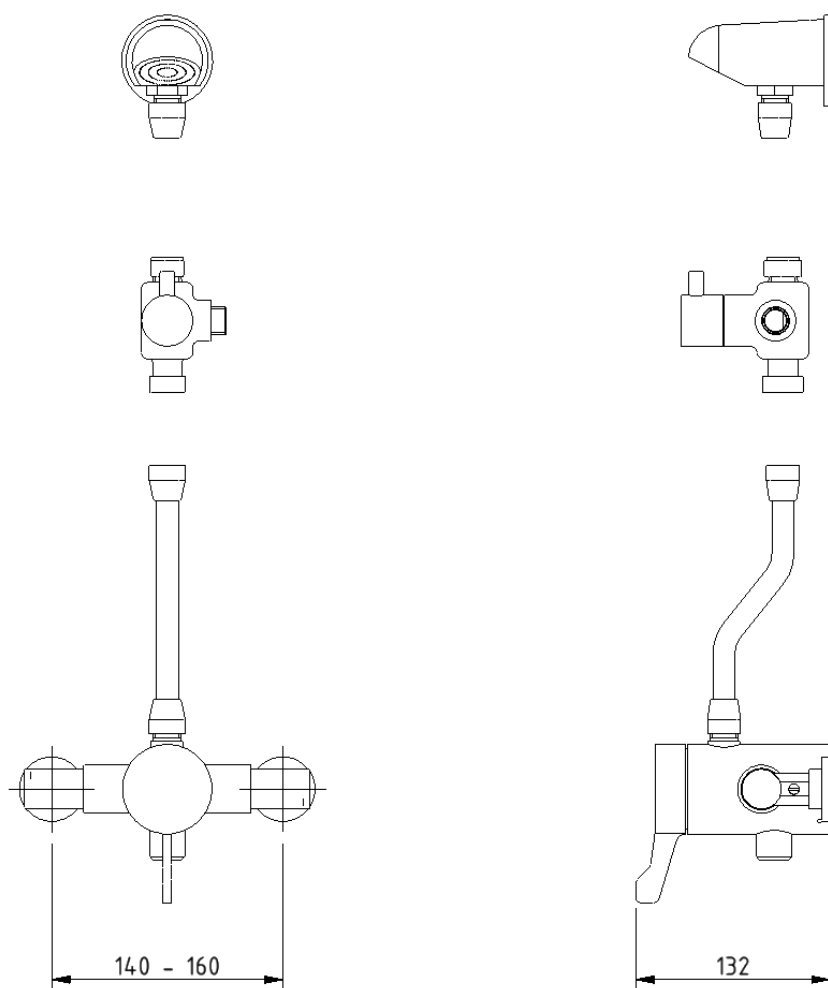
Maximum static pressure: 10 bar

Minimum dynamic pressure: 0.2 bar MIN, 5 bar MAX

Connection inlet: 15mm compression

Connection outlet: G 1/2"

Dimensions (mm)



NOTE: MAIN VALVE INLET CONNECTIONS CAN TURN THROUGH 90 DEGREES FOR PIPEWORK RUNNING EXTERNAL TO THE WALL.

Fitzroy of London may occasionally need to change specification of products and/or kit contents and reserves the right to do so. We strive to keep our documentation up to date; however, we cannot guarantee this. We accept no liability for any information given on this data sheet.

Wall mounted padded Doc M shower seat



Product details

Warranty: 5 years

Max load: 250 kg

Doc M compliant: Yes

Suitable for wet areas: Yes

Features

- Complies with Part M of the Building Regulations
- Extended projection to allow easier side transfer from wheelchair
- Aluminium and stainless frame
- Durable clip on plastic seat
- Adjustable height
- Drainage holes for easy-drain
- Back support for optimum comfort
- Closed cell polyurethane pad for maximum hygiene and comfort
- Foldable design

Finish options



DB
Dark Blue (RAL 5011)



GY
Grey (RAL 7005)

Product description

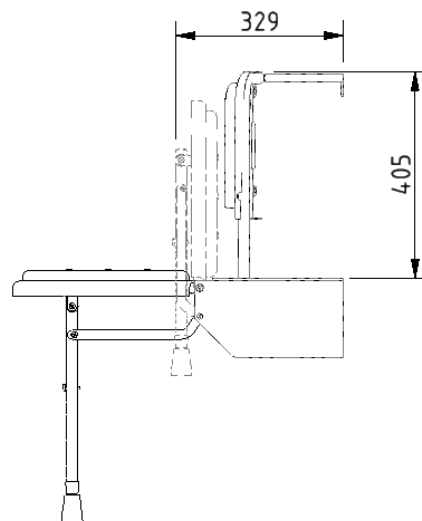
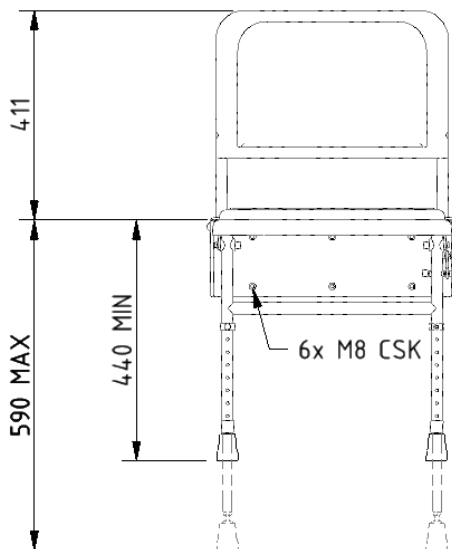
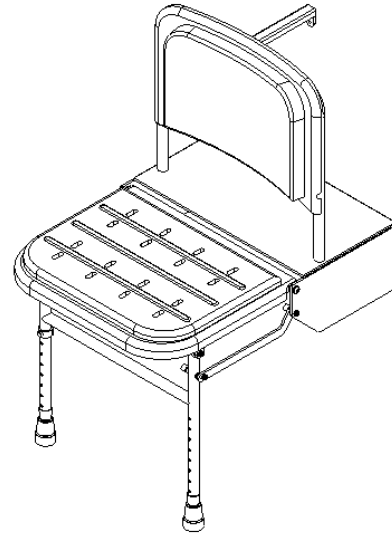
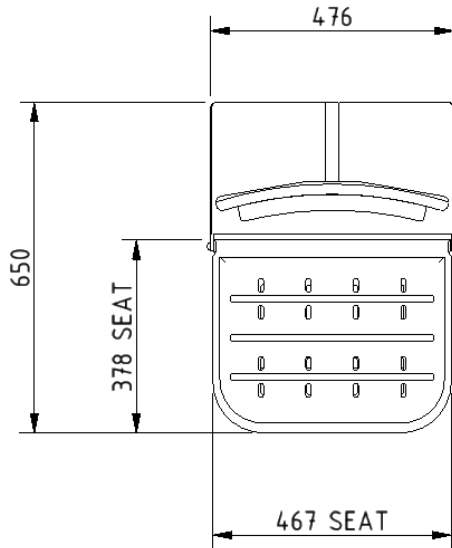
Doc M shower seat, 650mm projection, polished frame

Product code

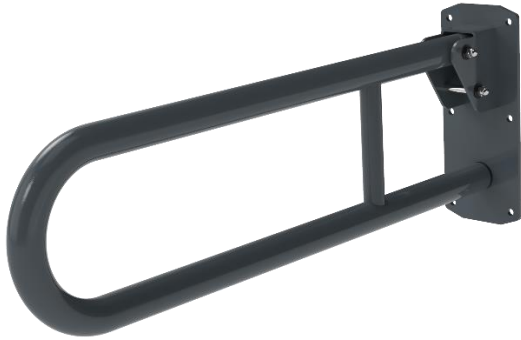
SB-085/**

Replace ** with 2-character short code for chosen finish.
e.g., SB-085/DB

Dimensions (mm)



Stainless steel lift and lock hinged support rail



Product details

Warranty: 5 years

Max load: 135 kg

Doc M compliant: Yes (800mm only)

Suitable for wet areas: Yes

Features

- Complies with Part M of the Building Regulations
- Lift and lock folding mechanism
- Non-corrosive stainless steel construction
- Toilet roll holder (optional)

Finish options

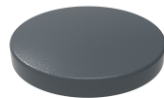
Powder Coated



DB
Dark Blue (RAL 5011)



GY
Grey (RAL 7005)



DG
Dark Grey (RAL 7016)



WH
White (RAL 9016)

Mechanical



SP
Polished Stainless Steel



SS
Satin Stainless Steel

Product description

Product code

Hinged lift and lock support rail, stainless steel, 650mm

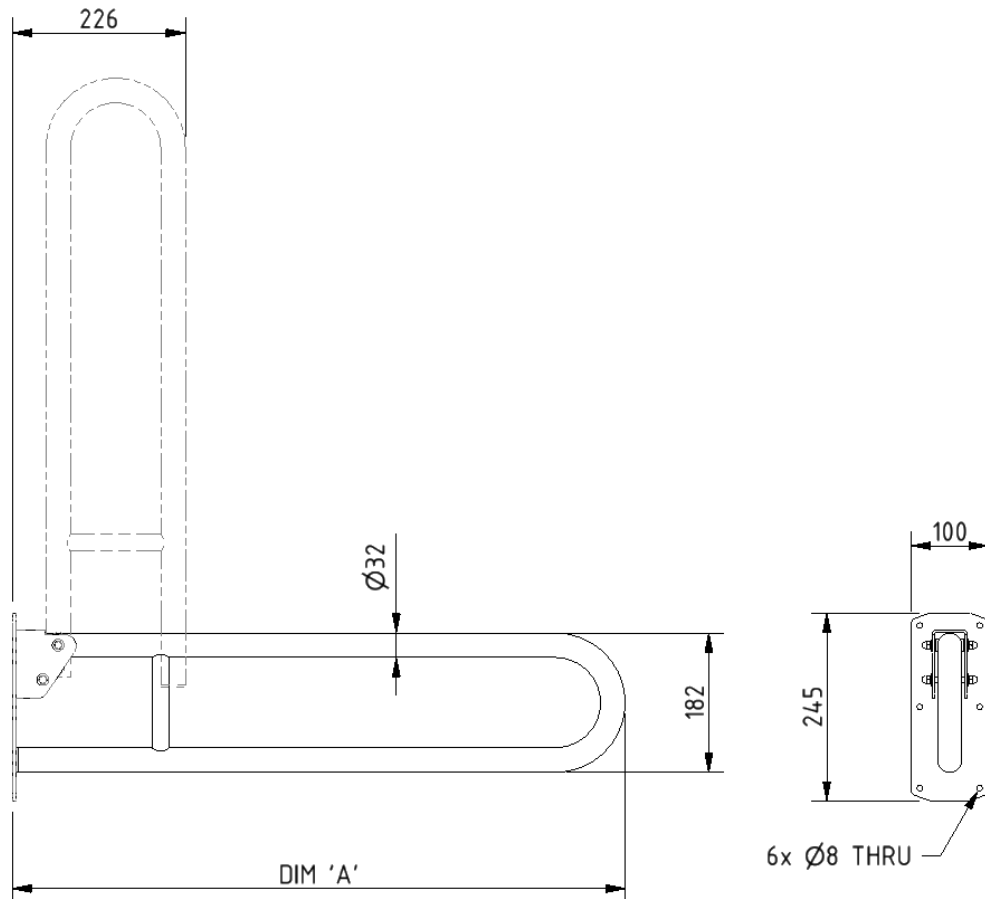
211865/**

Hinged lift and lock support rail, stainless steel, 800mm

211880/**

Replace ** with 2-character code for chosen finish (Powder Coated / Mechanical).
e.g., 211865/DB

Dimensions (mm)



PRODUCT CODE	211865/**	211880/**
DIM 'A'	650	800

Stainless steel grab rail with concealed fixings, 35mm diameter tube



Product details

Warranty:	5 Years
Max load:	185 kg
Doc M compliant:	Yes
Suitable for wet areas:	Yes

Features

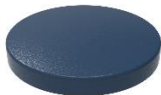
- Stainless steel construction
- Durable powder coated finish
- Concealed fixing

Finish options

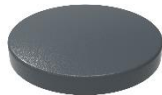
Powder coated



WH
White (RAL 9016)



DB
Dark Blue (RAL 5011)



DG
Dark Grey (RAL 7016)



GY
Grey (RAL 7005)

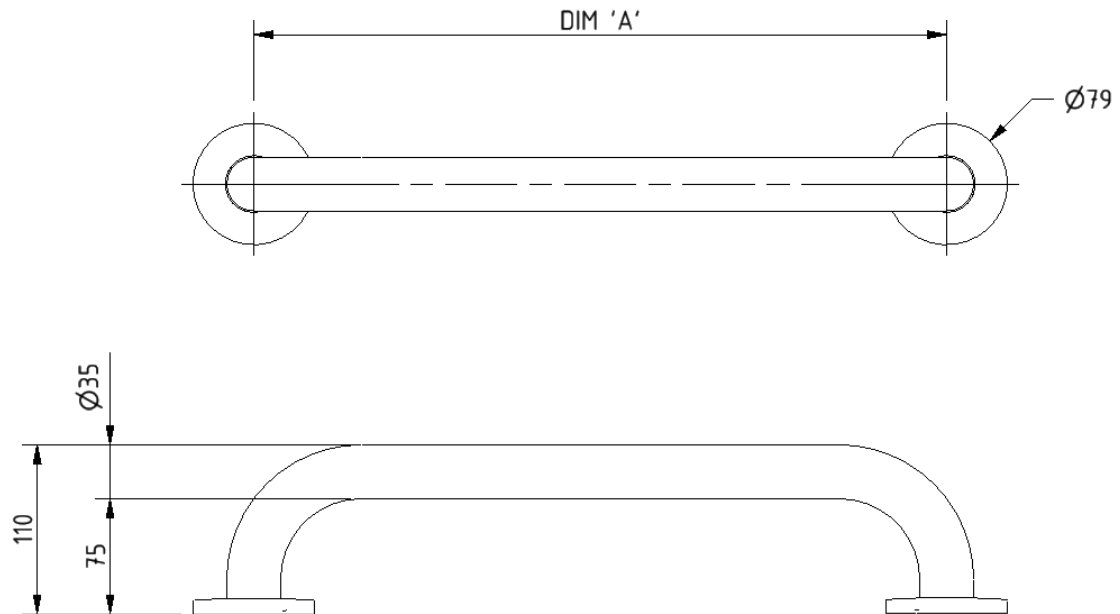
Product description

Product code

Grab rail, stainless steel, concealed fixings, 35mm diameter, 300mm	210130/**
Grab rail, stainless steel, concealed fixings, 35mm diameter, 450mm	210145/**
Grab rail, stainless steel, concealed fixings, 35mm diameter, 600mm	210160/**
Grab rail, stainless steel, concealed fixings, 35mm diameter, 900mm	210190/**

Replace ** with 2-character short code for chosen finish.
e.g., 210130/WH

Dimensions (mm)



PRODUCT CODE	210130/**	210145/**	210160/**	210190/**
DIM 'A'	300	450	600	900

Single aluminium robe hook



Product details

Warranty: 2 years

Max load: N/A

Doc M compliant: Yes

Suitable for wet areas: Yes

Features

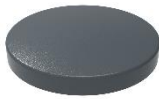
- Aluminium construction
- Colour options available for visually impaired
- Complies with Part M of the Building Regulations

Finish options

Powder Coated



DB
Dark Blue (RAL 5011)



DG
Dark Grey (RAL 7016)



GY
Grey (RAL 7005)



MB
Matt Black (RAL 9005)



WH
White (RAL 9016)

Product description

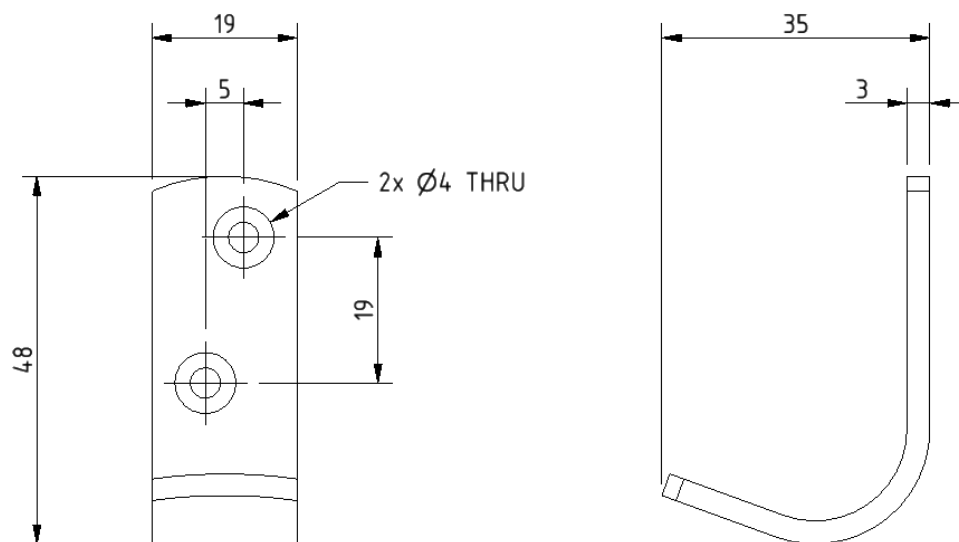
Single robe hook, aluminium

Product code

141701/**

Replace ** with 2-character short code for chosen finish (Powder Coated).
e.g., 141701/DB

Dimensions (mm)



Sliding shower head bracket



Product details

Warranty:	5 years
Max load:	N/A
Doc M compliant:	Yes
Suitable for wet areas:	Yes

Features

- Complies with Part M of the Building Regulations
- Large button for easy operation for users with limited dexterity
- Suitable for use with 32mm diameter rails

Finish options



CP
Polished Chrome

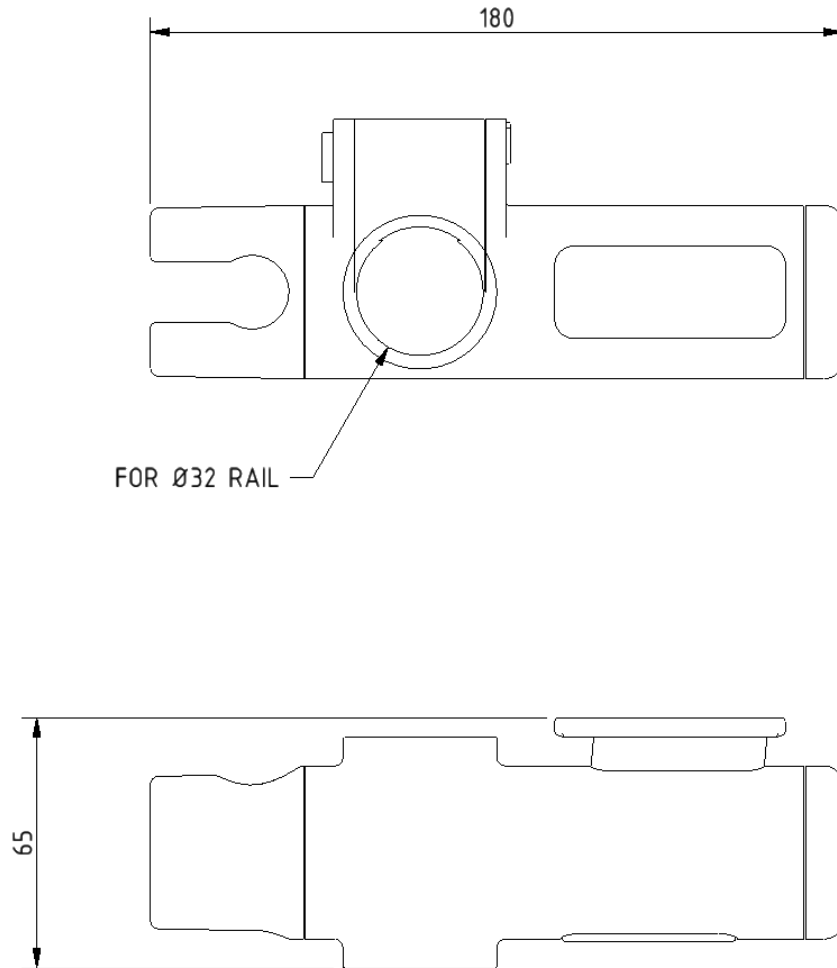
Product description

Sliding shower head bracket, for 32mm rail, chrome polished

Product code

250401

Dimensions (mm)



Shower handset



Product details

Warranty: 5 years

Max load: N/A

Doc M compliant: Yes

Suitable for wet areas: Yes

Features

- Robust plastic construction
- ½" BSP threaded connection
- 3 stage flow style adjustment paddle

Finish options



CP
Polished Chrome

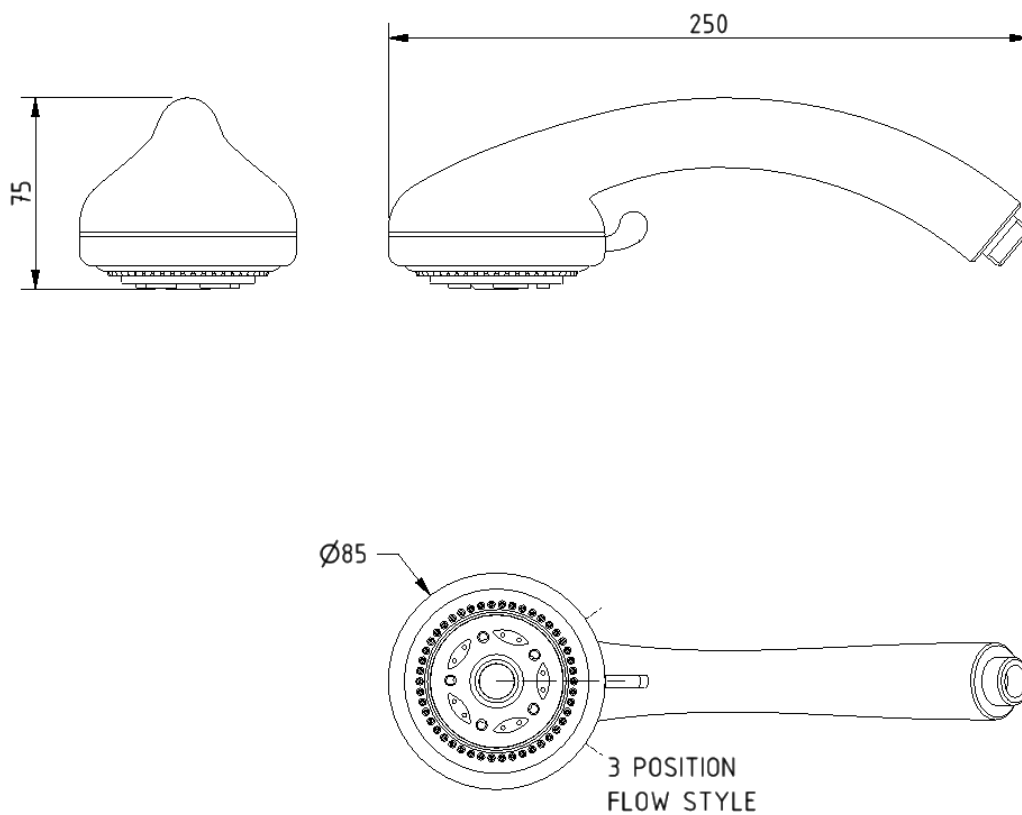
Product description

Shower handset, chrome plated

Product code

COM-BO30009CP

Dimensions (mm)



Stainless steel L-shaped shower curtain rail, 1200mm x 1200mm



Product details

Warranty: 5 years

Max load: N/A

Doc M compliant: Yes

Suitable for wet areas: Yes

Features

- Tubular stainless steel construction
- Supplied with ceiling stay
- Concealed wall fixings
- Can be cut to measure on site if necessary

Finish options

Powder Coated



WH
White (RAL 9016)

Mechanical



SP
Polished Stainless Steel



SS
Satin Stainless Steel

Product description

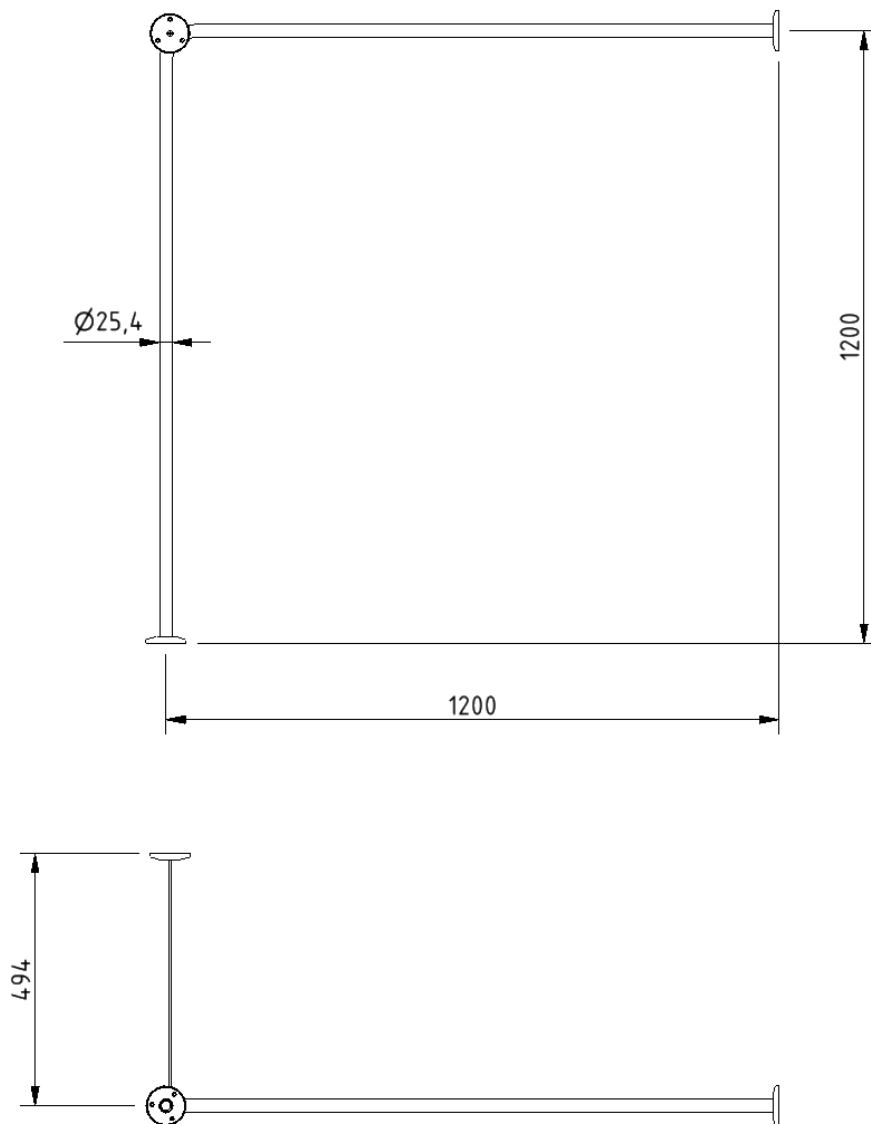
Shower curtain rail, stainless steel, L-shaped, 1200mm x 1200mm

Product code

250502/**

Replace ** with 2-character short code for chosen finish (Powder Coated / Mechanical).
e.g., 250502/WH

Dimensions (mm)



Weighted polyester shower curtain



Product details

Warranty: 5 years

Max load: N/A

Doc M compliant: Yes

Suitable for wet areas: Yes

Features

- Easy clean polyester material
- Weighted curtain
- Eyelet hanging
- Durable

Product description

Product code

Weighted shower curtain, polyester, 1800mm x 2000mm, white (RAL 9016)

250603-WH

Dimensions (mm)

