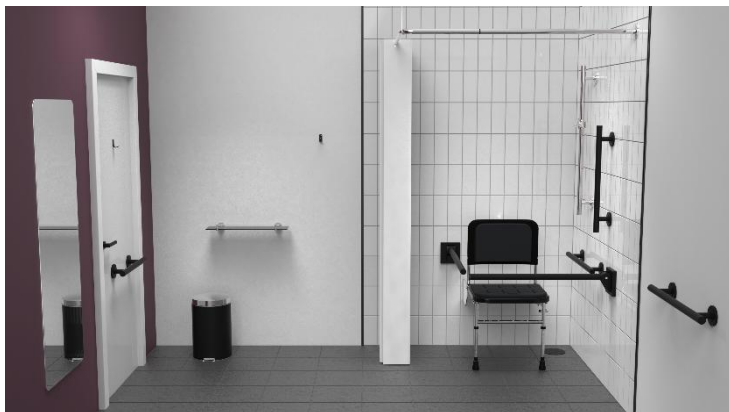


Rail only Doc M shower pack with stainless steel luxury concealed fixing grab rails



Product details

Warranty: See individual products
Max load: See individual products

Doc M compliant: Yes

Suitable for wet areas: Yes

Features

- Complies with Part M of the Building Regulations
- Concealed fixing stainless steel grab rails
- Stainless steel hinged support rail with concealed fixings
- Simple one box solution

Finish options

Mechanical



SP
Polished Stainless Steel



SS
Satin Stainless Steel

Powder Coated



MB
Matt Black (RAL 9005)

Product description

Product code

Rail only Doc M shower pack, stainless steel, luxury grab rails

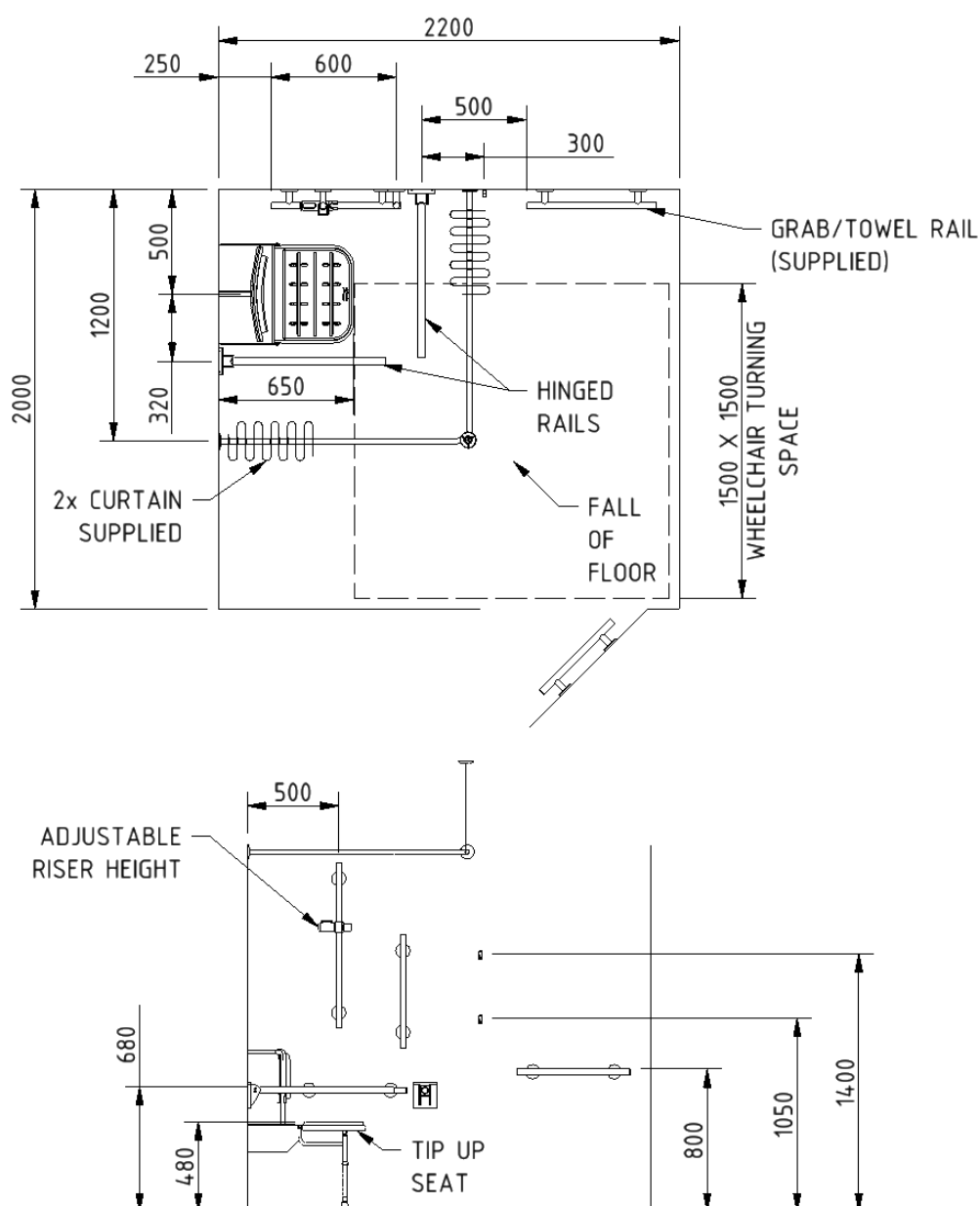
321101/**

Replace ** with 2-character short code for chosen finish (Mechanical / Powder Coated).
 e.g., 321101/SP

Pack Contents

- 1 x Doc M shower seat
- 1 x 450mm stainless steel luxury grab rail with concealed fixings
- 3 x 600mm stainless steel luxury grab rails with concealed fixings
- 1 x 900mm stainless steel luxury grab rail with concealed fixings *(SP for -MB pack)*
- 2 x 800mm stainless steel contemporary hinged support rails with concealed fixings
- 1 x 1200mm x 1200mm stainless steel shower curtain rail *(SP for -MB pack)*
- 2 x Weighted shower curtains
- 1 x Sliding shower head bracket *(always chrome)*
- 2 x Single robe hooks *(MB packs = MB hooks; SS / SP = WH hooks)*

Dimensions (mm)



Wall mounted polished aluminium Doc M shower seat



Product details

Warranty: 5 years

Max load: 250 kg

Doc M compliant: Yes

Suitable for wet areas: Yes

Features

- Complies with Part M of the Building Regulations
- Extended projection to allow easier side transfer from wheelchair
- Aluminium and stainless frame
- Durable clip on plastic seat
- Adjustable height
- Drainage holes for easy-drain
- Back support for optimum comfort
- Closed cell polyurethane pad for maximum hygiene and comfort
- Foldable design

Finish options



BL
Black

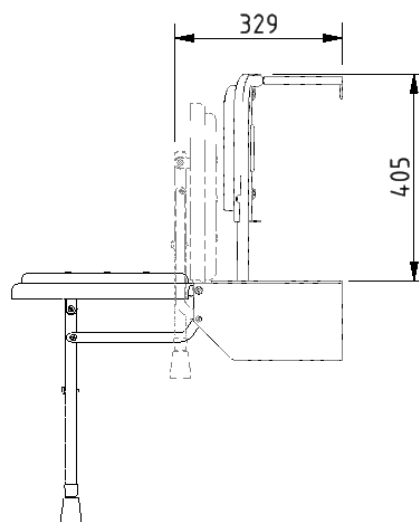
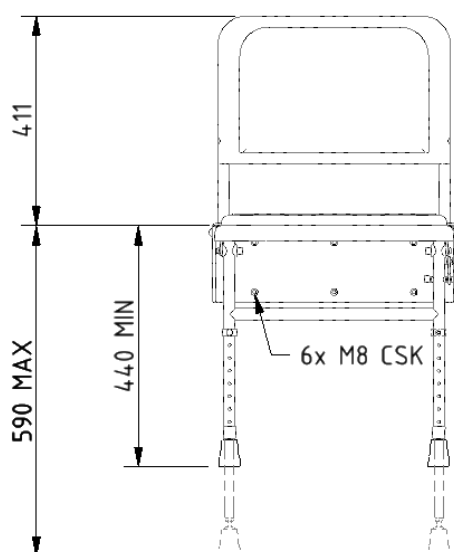
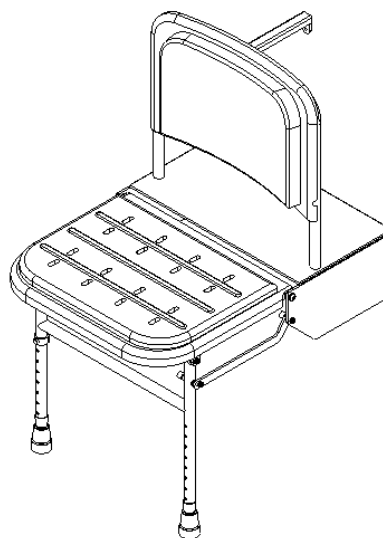
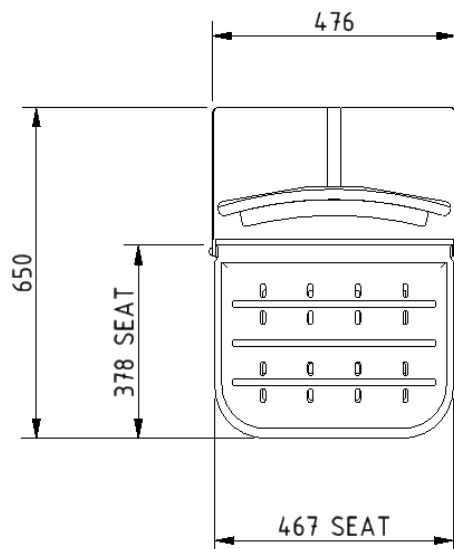
Product description

Doc M shower seat, 650mm projection, polished frame, black pads

Product code

SB-085/BL

Dimensions (mm)



Luxury straight stainless steel concealed fixing grab rail



Product details

Warranty:	5 Years
Max load:	150 kg
Doc M compliant:	Yes
Suitable for wet areas:	Yes

Features

- High quality stainless steel construction
- Concealed fixing grab rails
- Complies with Doc M of the Building Regulations
- Stylish 'T-Bar' design

Finish options

Mechanical



SS
Satin Stainless Steel



SP
Polished Stainless Steel

Powder Coated



MB
Matt Black (RAL 9005)

Product description

Product code

Luxury straight, stainless steel concealed fixing grab rail, 300mm

F22-0300-LSC-**

Luxury straight, stainless steel concealed fixing grab rail, 450mm

F22-0450-LSC-**

Luxury straight, stainless steel concealed fixing grab rail, 600mm

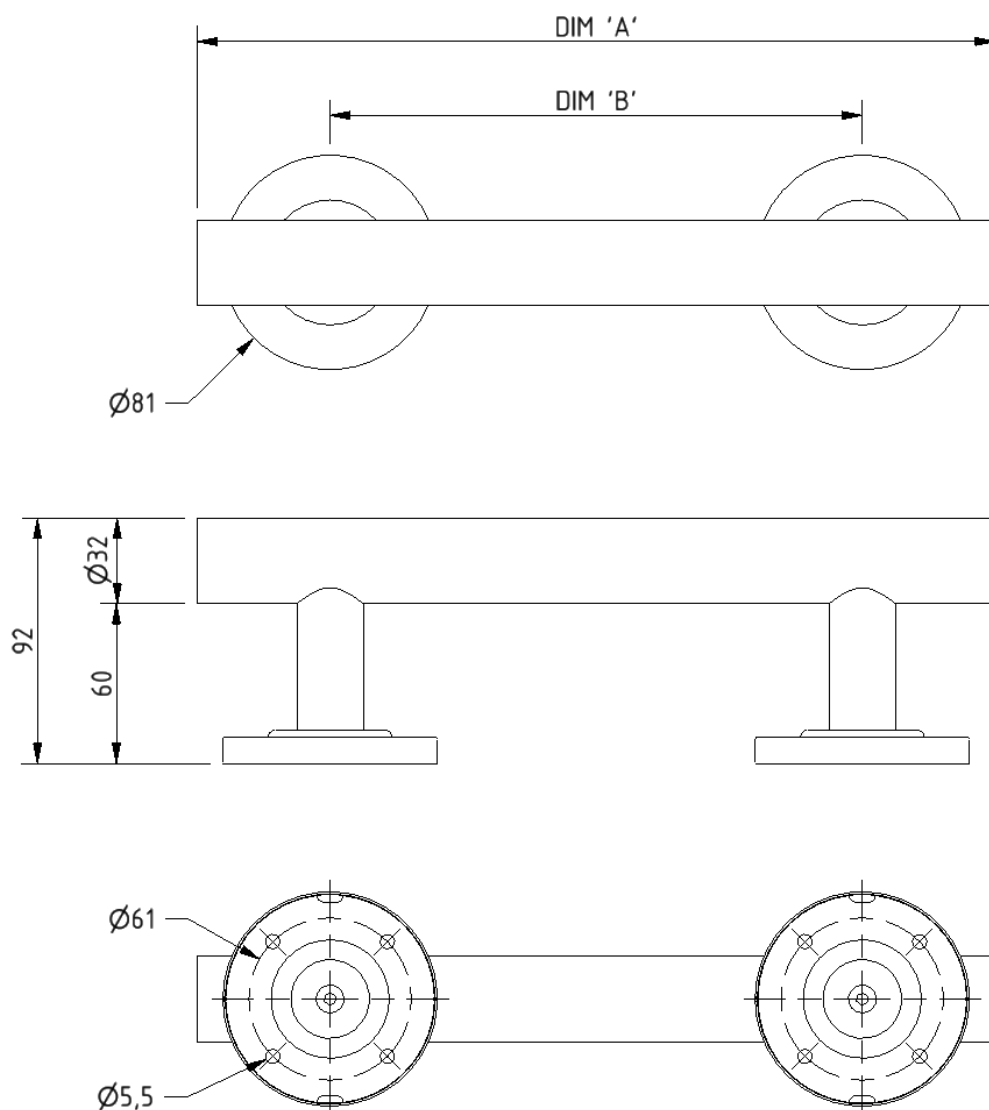
F22-0600-LSC-**

Luxury straight, stainless steel concealed fixing grab rail, 900mm

F22-0900-LSC-**

Replace ** with 2-character short code for chosen finish (Mechanical / Powder Coated).
e.g., F22-0300-LSC-SS

Dimensions (mm)



PRODUCT CODE	F22-0300-LSC	F22-0450-LSC	F22-0600-LSC	F22-0900-LSC
DIM 'A'	300	450	600	900
DIM 'B'	200	300	450	750

Luxury straight stainless steel grab rail with concealed fixings



Product details

Warranty: 5 years

Max load: 200 kg

Doc M compliant: Yes

Suitable for wet areas: Yes

Features

- High quality stainless steel construction
- Concealed fixings
- Stylish T-bar design
- Complies with Part M of the Building Regulations

Finish options



SS
Satin Stainless Steel



SP
Polished Stainless Steel

Product description

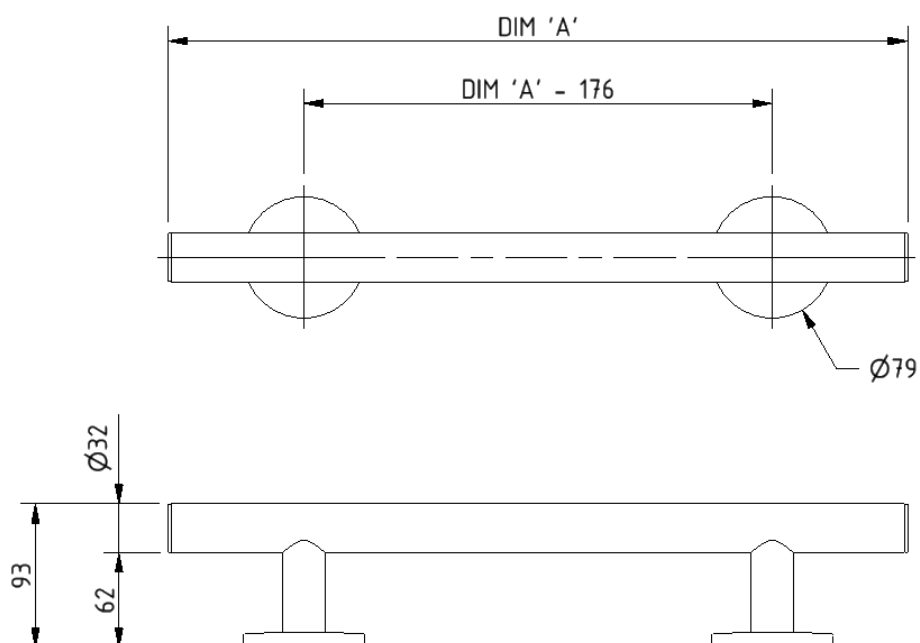
Luxury grab rail, straight, stainless steel, concealed fixings, 900mm

Product code

311490/**

Replace ** with 2-character short code for chosen finish.
e.g., 311490/SS

Dimensions (mm)



PRODUCT CODE	311435/**	311448/**	311462/**	311490/**
DIM 'A'	355	480	620	900

Contemporary single arm stainless steel friction hinged rail with concealed fixings



Product details

Warranty: 5 years

Max load: 90 kg

Doc M compliant: Yes

Suitable for wet areas: Yes

Features

- Contemporary single arm design
- Premium friction folding mechanism
- High quality stainless steel construction
- Complies with Part M of the Building Regulations

Finish options

Mechanical



SP

Polished Stainless Steel



SS

Satin Stainless Steel

Powder Coated



MB

Matt Black (RAL 9005)

Product description

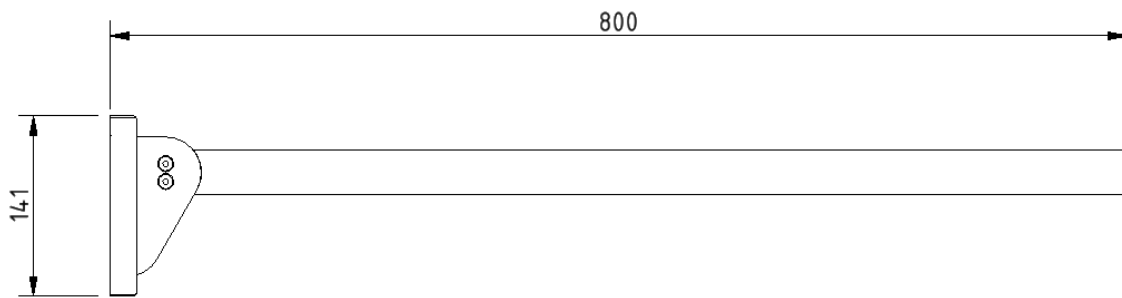
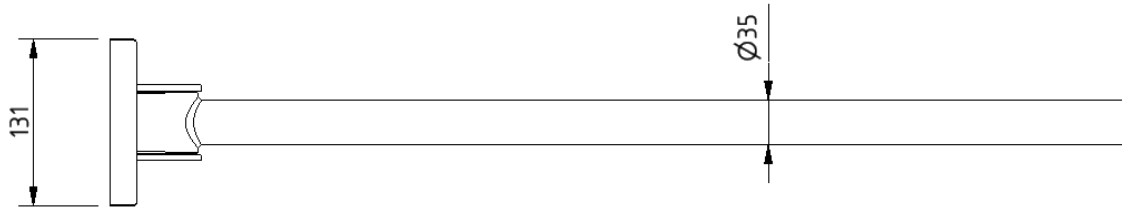
Contemporary single arm friction rail, stainless steel, concealed fixings

Product code

310480C/**

Replace ** with 2-character short code for chosen finish (Mechanical / Powder Coated).
e.g., 310480C/SP

Dimensions (mm)



Sliding shower head bracket



Product details

Warranty:	5 years
Max load:	N/A
Doc M compliant:	Yes
Suitable for wet areas:	Yes

Features

- Complies with Part M of the Building Regulations
- Large button for easy operation for users with limited dexterity
- Suitable for use with 32mm diameter rails

Finish options



CP
Polished Chrome

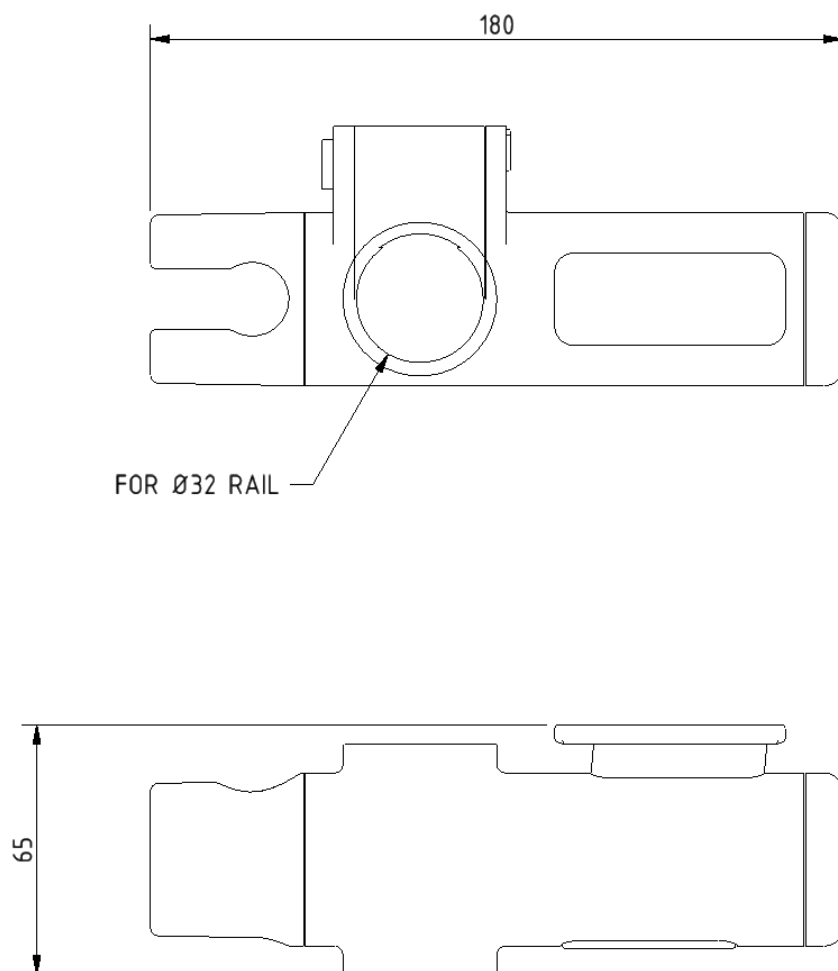
Product description

Sliding shower head bracket, for 32mm rail, chrome polished

Product code

250401

Dimensions (mm)



Stainless steel L-shaped shower curtain rail, 1200mm x 1200mm



Product details

Warranty: 5 years

Max load: N/A

Doc M compliant: Yes

Suitable for wet areas: Yes

Features

- Tubular stainless steel construction
- Supplied with ceiling stay
- Concealed wall fixings
- Can be cut to measure on site if necessary

Finish options

Powder Coated



WH
White (RAL 9016)

Mechanical



SP
Polished Stainless Steel



SS
Satin Stainless Steel

Product description

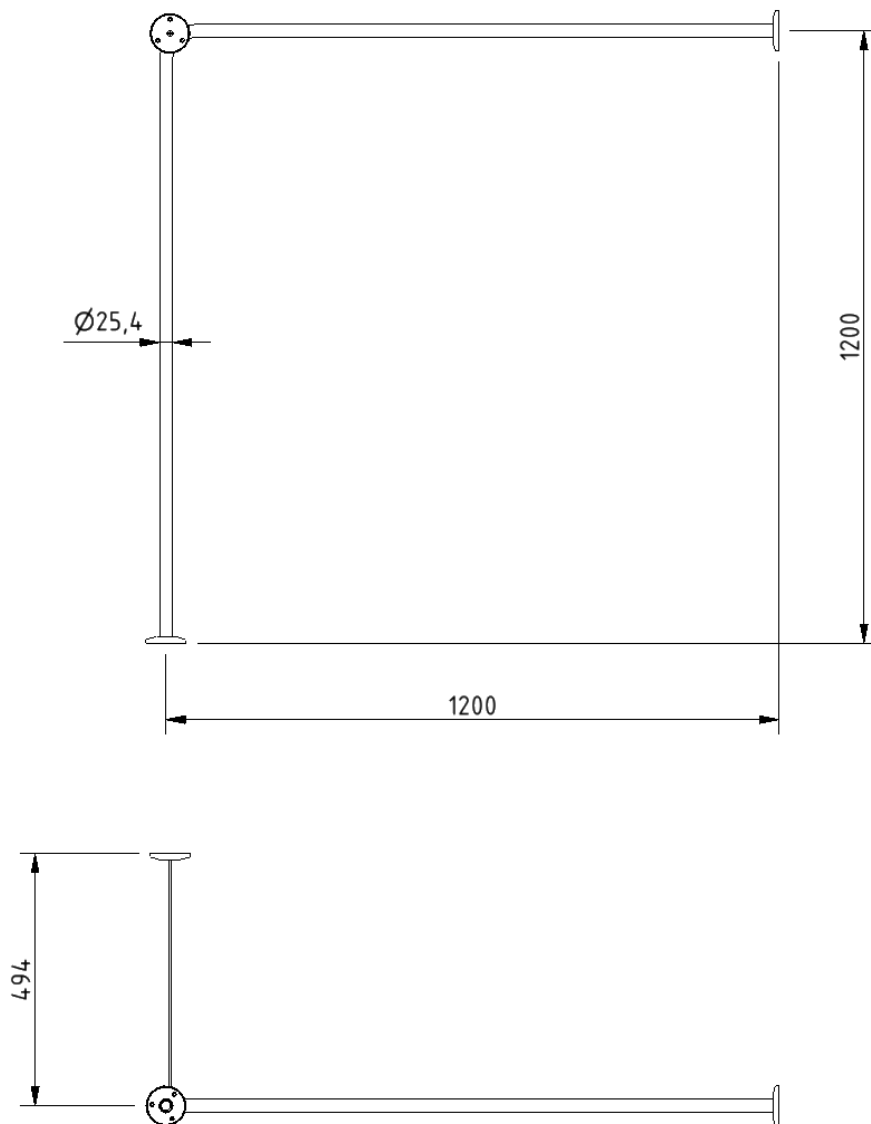
Product code

Shower curtain rail, stainless steel, L-shaped, 1200mm x 1200mm

250502/**

Replace ** with 2-character short code for chosen finish (Powder Coated / Mechanical).
e.g., 250502/WH

Dimensions (mm)



Weighted polyester shower curtain



Product details

Warranty: 5 years

Max load: N/A

Doc M compliant: Yes

Suitable for wet areas: Yes

Features

- Easy clean polyester material
- Weighted curtain
- Eyelet hanging
- Durable

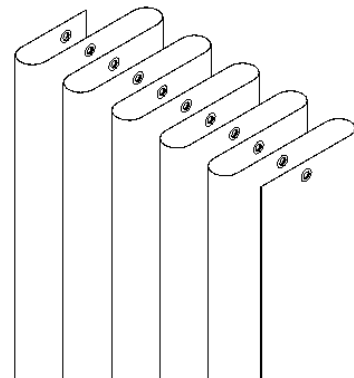
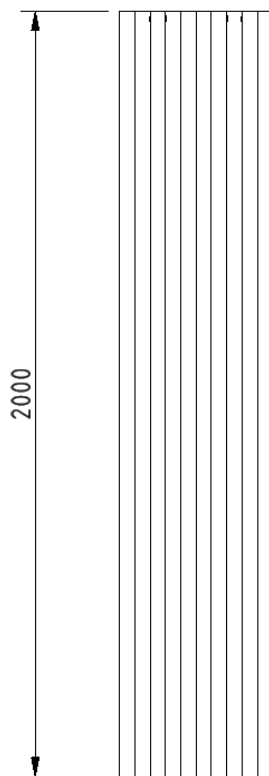
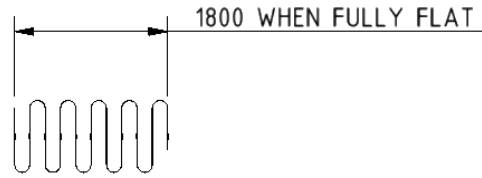
Product description

Product code

Weighted shower curtain, polyester, 1800mm x 2000mm, white (RAL 9016)

250603-WH

Dimensions (mm)



Single aluminium robe hook



Product details

Warranty: 2 years

Max load: N/A

Doc M compliant: Yes

Suitable for wet areas: Yes

Features

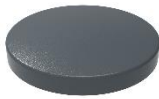
- Aluminium construction
- Colour options available for visually impaired
- Complies with Part M of the Building Regulations

Finish options

Powder Coated



DB
Dark Blue (RAL 5011)



DG
Dark Grey (RAL 7016)



GY
Grey (RAL 7005)



MB
Matt Black (RAL 9005)



WH
White (RAL 9016)

Product description

Single robe hook, aluminium

Product code

141701/**

Replace ** with 2-character short code for chosen finish (Powder Coated).
e.g., 141701/DB

Dimensions (mm)

