

## Exposed valve Doc M shower pack with stainless steel luxury concealed fixing grab rails



### Product details

**Warranty:** See individual products  
**Max load:** See individual products

**Doc M compliant:** Yes

**Suitable for wet areas:** Yes

### Features

- Complies with Part M of the Building Regulations
- Reg 4 Certified (WRAS, NSF, Kiwa, etc.) and TMV3 approved thermostatic mixer shower with extended lever
- Extended projection shower seat to allow easier side transfer from wheelchair
- Concealed fixings stainless steel grab rails & hinged support rails
- Simple one box solution

### Finish options

#### Mechanical



**SP**

Polished Stainless Steel



**SS**

Satin Stainless Steel

#### Powder Coated



**MB**

Matt Black (RAL 9005)

### Product description

### Product code

Exposed valve Doc M shower pack, stainless steel, luxury grab rails

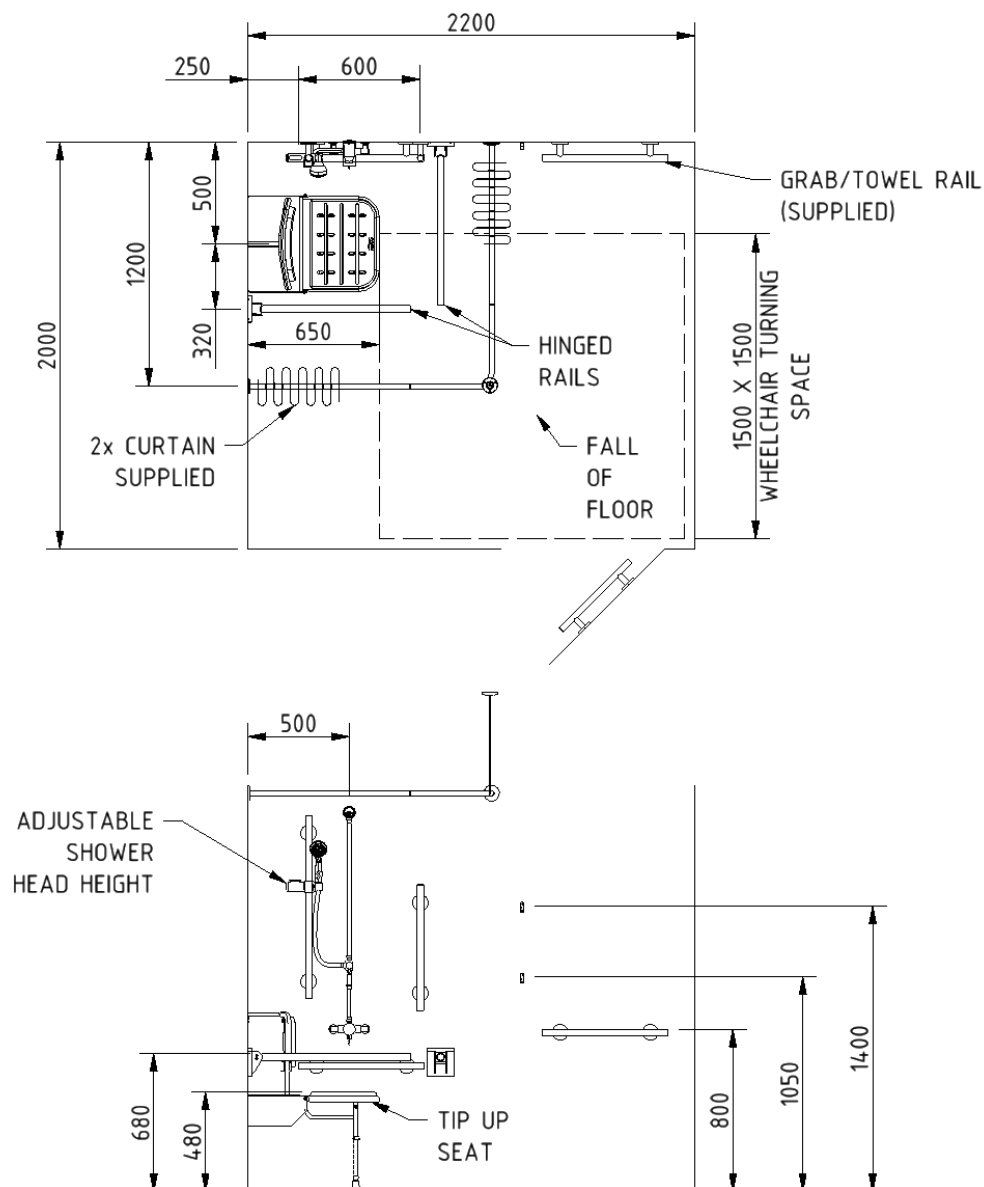
321103/\*\*

Replace \*\* with 2-character short code for chosen finish (Mechanical / Powder Coated).  
 e.g., 321103/SP

## Pack Contents

- 1 x Doc M shower seat
- 1 x Exposed TMV3 Doc M shower valve *(always chrome)*
- 1 x Exposed Doc M shower diverter *(always chrome)*
- 1 x Shower head and hose *(always chrome)*
- 1 x Antivandal overhead shower head *(always chrome)*
- 3 x 600mm stainless steel grab rails with concealed fixings
- 1 x 450mm stainless steel grab rail with concealed fixings
- 1 x 900mm stainless steel grab rail with concealed fixings *(SP for -MB pack)*
- 2 x 800mm stainless steel hinged support rails with concealed fixings
- 1 x 1200mm x 1200mm stainless steel shower curtain rail *(SP for -MB pack)*
- 2 x Weighted shower curtains
- 1 x Sliding Shower head bracket
- 2 x Single robe hooks *(MB packs = MB hooks; SS / SP = WH hooks)*

## Dimensions (mm)



Fitzroy of London may occasionally need to change specification of products and/or kit contents and reserves the right to do so. We strive to keep our documentation up to date; however, we cannot guarantee this. We accept no liability for any information given on this data sheet.

## Wall mounted polished aluminium Doc M shower seat



### Product details

**Warranty:** 5 years

**Max load:** 250 kg

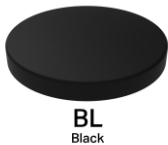
**Doc M compliant:** Yes

**Suitable for wet areas:** Yes

### Features

- Complies with Part M of the Building Regulations
- Extended projection to allow easier side transfer from wheelchair
- Aluminium and stainless frame
- Durable clip on plastic seat
- Adjustable height
- Drainage holes for easy-drain
- Back support for optimum comfort
- Closed cell polyurethane pad for maximum hygiene and comfort
- Foldable design

### Finish options



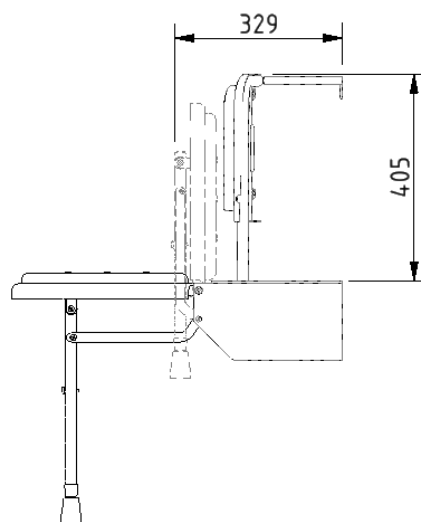
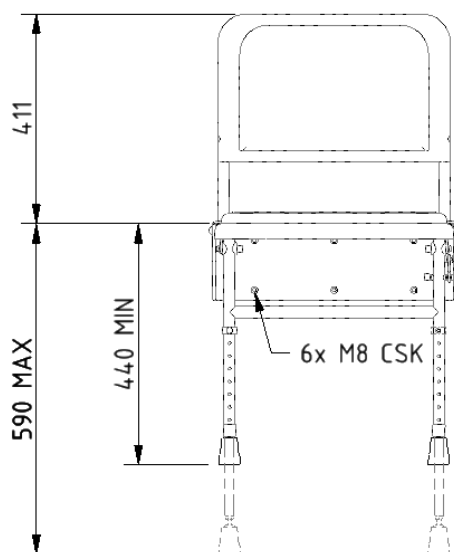
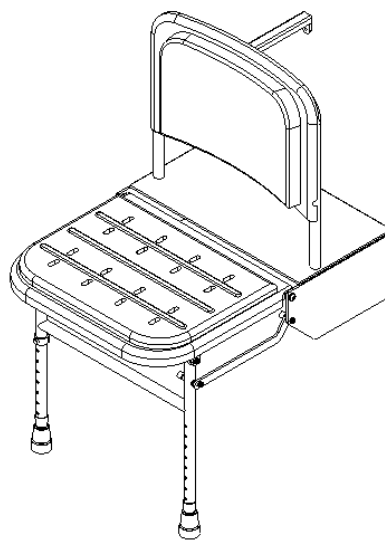
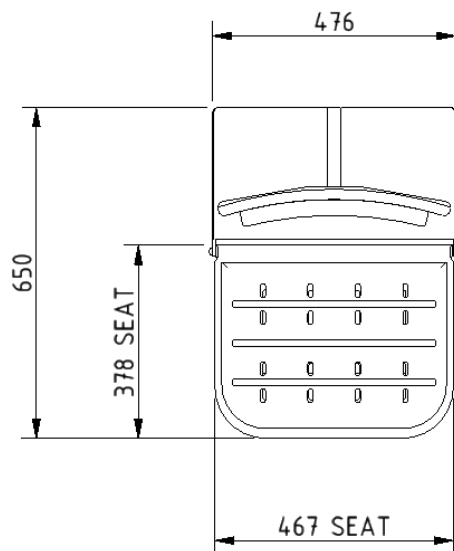
### Product description

Doc M shower seat, 650mm projection, polished frame, black pads

### Product code

SB-085/BL

## Dimensions (mm)



## Luxury straight stainless steel concealed fixing grab rail



### Product details

<b>Warranty:</b>	5 Years
<b>Max load:</b>	150 kg
<b>Doc M compliant:</b>	Yes
<b>Suitable for wet areas:</b>	Yes

### Features

- High quality stainless steel construction
- Concealed fixing grab rails
- Complies with Doc M of the Building Regulations
- Stylish 'T-Bar' design

## Finish options

### Mechanical



**SS**  
Satin Stainless Steel



**SP**  
Polished Stainless Steel

### Powder Coated



**MB**  
Matt Black (RAL 9005)

## Product description

## Product code

Luxury straight, stainless steel concealed fixing grab rail, 300mm

F22-0300-LSC-\*\*

Luxury straight, stainless steel concealed fixing grab rail, 450mm

F22-0450-LSC-\*\*

Luxury straight, stainless steel concealed fixing grab rail, 600mm

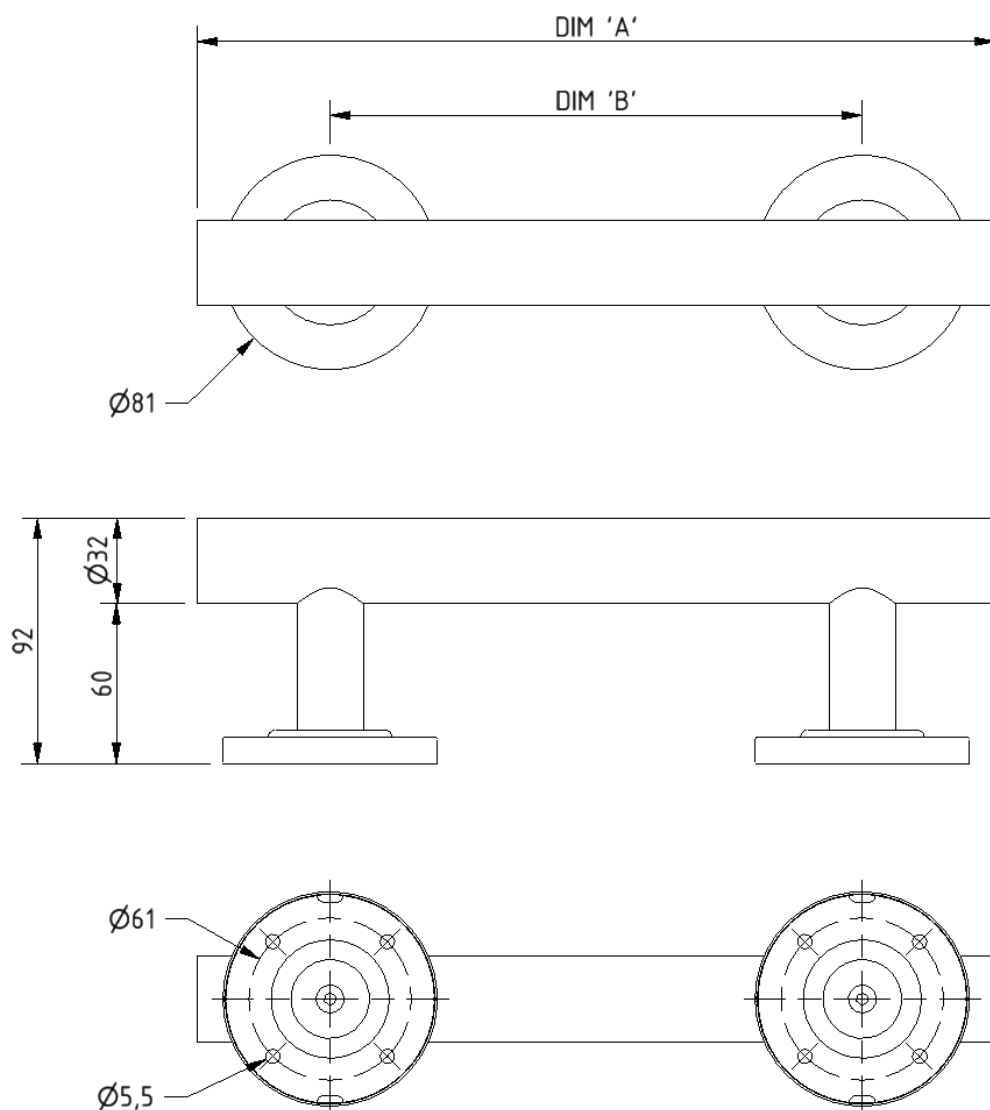
F22-0600-LSC-\*\*

Luxury straight, stainless steel concealed fixing grab rail, 900mm

F22-0900-LSC-\*\*

Replace \*\* with 2-character short code for chosen finish (Mechanical / Powder Coated).  
e.g., F22-0300-LSC-SS

# Dimensions (mm)



PRODUCT CODE	F22-0300-LSC	F22-0450-LSC	F22-0600-LSC	F22-0900-LSC
DIM 'A'	300	450	600	900
DIM 'B'	200	300	450	750

## Luxury straight stainless steel grab rail with concealed fixings



### Product details

**Warranty:** 5 years

**Max load:** 200 kg

**Doc M compliant:** Yes

**Suitable for wet areas:** Yes

### Features

- High quality stainless steel construction
- Concealed fixings
- Stylish T-bar design
- Complies with Part M of the Building Regulations

### Finish options



**SS**  
Satin Stainless Steel



**SP**  
Polished Stainless Steel

### Product description

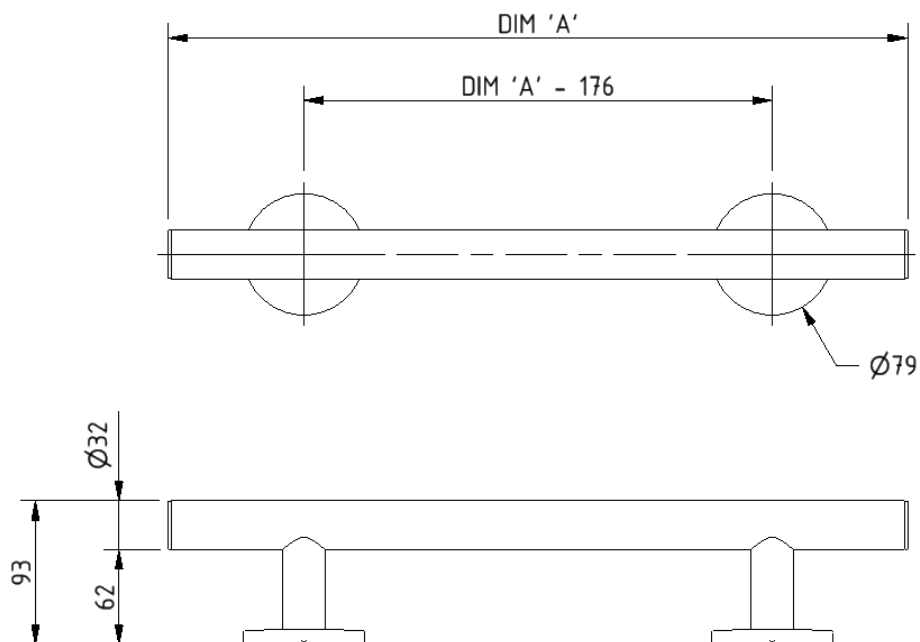
Luxury grab rail, straight, stainless steel, concealed fixings, 900mm

### Product code

311490/\*\*

Replace \*\* with 2-character short code for chosen finish.  
e.g., 311490/SS

# Dimensions (mm)



PRODUCT CODE	311435/**	311448/**	311462/**	311490/**
DIM 'A'	355	480	620	900

## Contemporary single arm stainless steel friction hinged rail with concealed fixings



### Product details

**Warranty:** 5 years

**Max load:** 90 kg

**Doc M compliant:** Yes

**Suitable for wet areas:** Yes

### Features

- Contemporary single arm design
- Premium friction folding mechanism
- High quality stainless steel construction
- Complies with Part M of the Building Regulations

### Finish options

#### Mechanical



**SP**

Polished Stainless Steel



**SS**

Satin Stainless Steel

#### Powder Coated



**MB**

Matt Black (RAL 9005)

### Product description

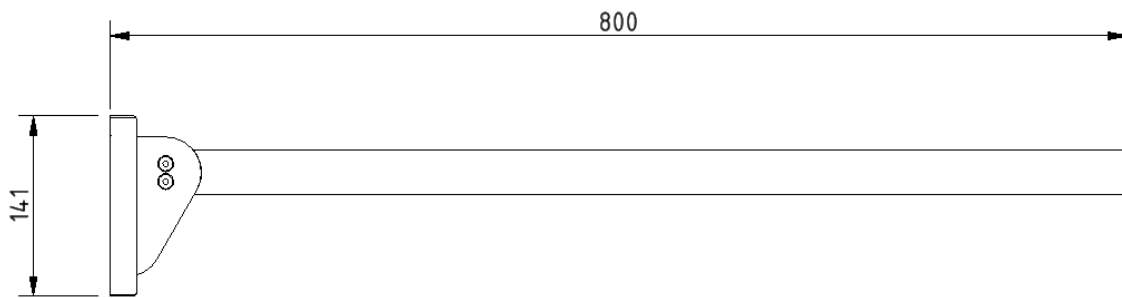
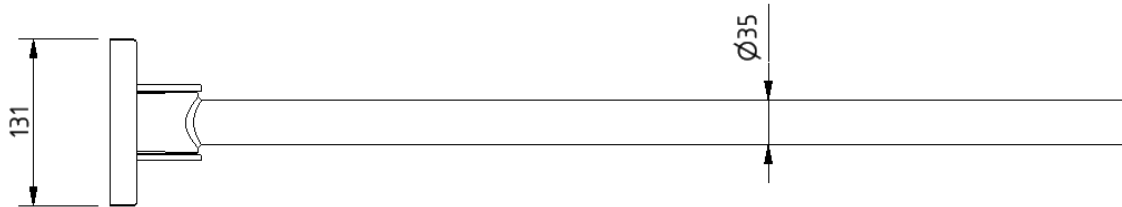
Contemporary single arm friction rail, stainless steel, concealed fixings

### Product code

310480C/\*\*

Replace \*\* with 2-character short code for chosen finish (Mechanical / Powder Coated).  
e.g., 310480C/SP

Dimensions (mm)



## Exposed TMV3 shower valve and diverter kit



### Product details

**Warranty:** 5 years

**Max load:** N/A

**Doc M compliant:** Yes

**Suitable for wet areas:** Yes

### Features

- Complies with Part M of the Building Regulations
- Single sequential control for both temperature and flow
- Automatic shut off in the event of hot or cold water supply failure
- Brass construction
- TMV3 Approved & Reg 4 Certified (WRAS, NSF, Kiwa, etc.)
- The supplied pipes can be turned through 90° to allow external pipework
- Main valve inlet connections can be turned through 90° to allow external pipework

### Finish options



### Product description

Exposed TMV3 shower valve and diverter kit

### Product code

COM-NYTS3650TOELCKIT

### Pack contents

- 1 x Inline diverter
- 1 x Exposed valve
- 1 x Fixed shower head

### Flo rates (l/min)

System pressure (bar)	0.2	0.5	1	2	3	5
Open outlet (mixed)	3.9	6.3	6	7	7.5	8

### Specification

**Maximum hot water supply temperature:** 65 degrees Celsius

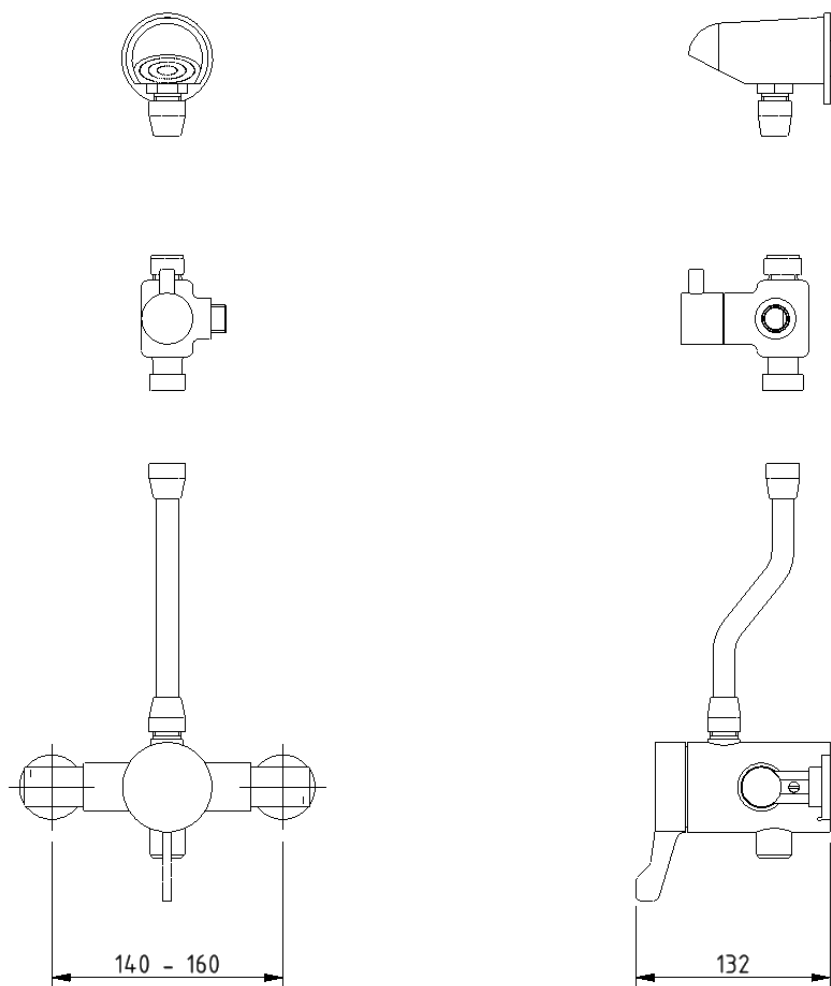
**Maximum static pressure:** 10 bar

**Minimum dynamic pressure:** 0.2 bar MIN, 5 bar MAX

**Connection inlet:** 15mm compression

**Connection outlet:** G 1/2"

### Dimensions (mm)



**NOTE: MAIN VALVE INLET CONNECTIONS CAN TURN THROUGH 90 DEGREES FOR PIPEWORK RUNNING EXTERNAL TO THE WALL.**

Fitzroy of London may occasionally need to change specification of products and/or kit contents and reserves the right to do so. We strive to keep our documentation up to date; however, we cannot guarantee this. We accept no liability for any information given on this data sheet.

## Shower handset



### Product details

**Warranty:** 5 years

**Max load:** N/A

**Doc M compliant:** Yes

**Suitable for wet areas:** Yes

### Features

- Robust plastic construction
- ½" BSP threaded connection
- 3 stage flow style adjustment paddle

## Finish options



**CP**  
Polished Chrome

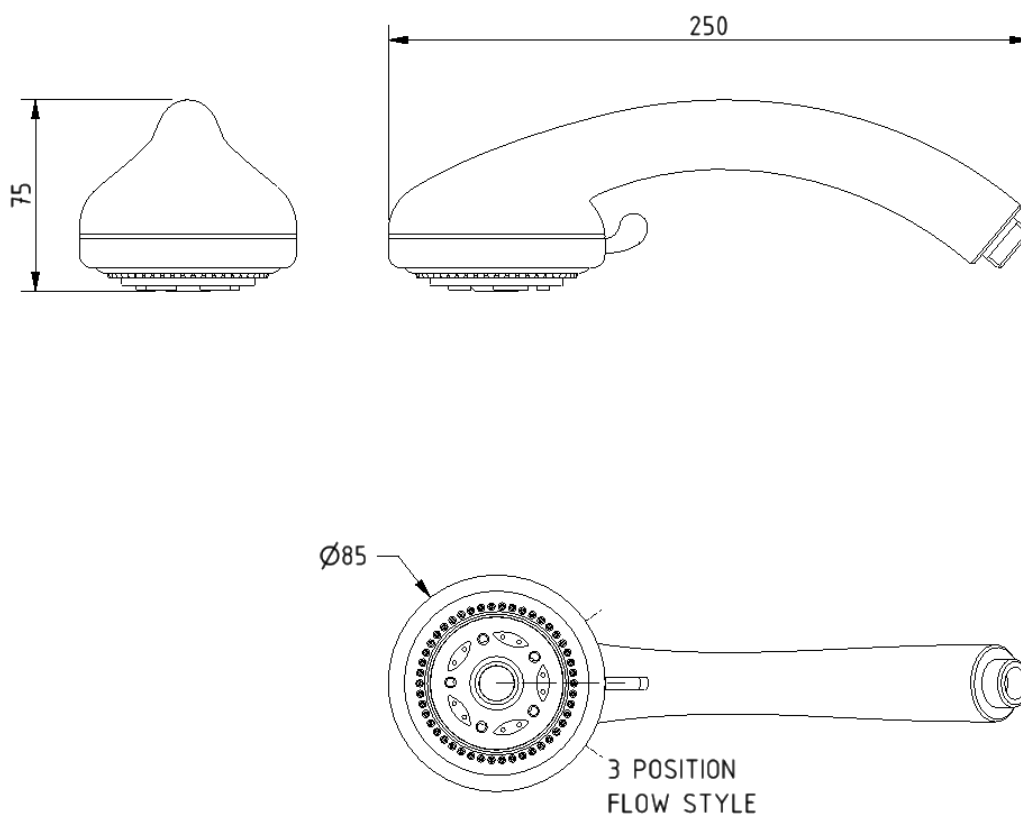
## Product description

Shower handset, chrome plated

## Product code

COM-BO30009CP

Dimensions (mm)



## Sliding shower head bracket



### Product details

**Warranty:** 5 years

**Max load:** N/A

**Doc M compliant:** Yes

**Suitable for wet areas:** Yes

### Features

- Complies with Part M of the Building Regulations
- Large button for easy operation for users with limited dexterity
- Suitable for use with 32mm diameter rails

## Finish options



**CP**  
Polished Chrome

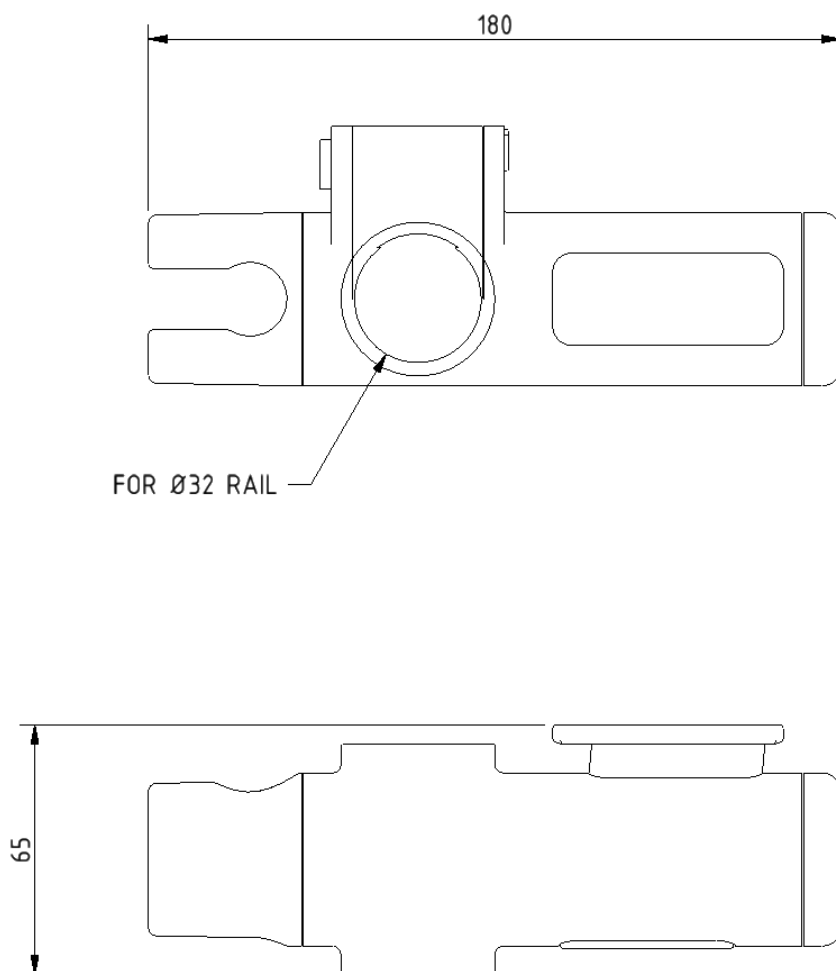
## Product description

Sliding shower head bracket, for 32mm rail, chrome polished

## Product code

250401

Dimensions (mm)



## Shower hose, 2m chrome plated



### Product details

**Warranty:** 1 year

**Max load:** N/A

**Doc M compliant:** No

**Suitable for wet areas:** Yes

### Features

- Comes complete in chrome finish
- Modern style
- 1/2" BSP threaded connection on both ends

### Finish options



**CP**  
Polished Chrome

### Product description

Shower hose, 2m, chrome plated

### Product code

COM-30006CPX

Need some product advice? Contact our team of product specialists  
+44(0)1642 710 719 | [sales@fitzroyoflondon.com](mailto:sales@fitzroyoflondon.com)

**[www.fitzroyoflondon.com](http://www.fitzroyoflondon.com)**

*DAT-COM-30006CPX Doc Rev 1*

Fitzroy of London may occasionally need to change specification of products and/or kit contents and reserves the right to do so.  
We strive to keep our documentation up to date; however, we cannot guarantee this. We accept no liability for any information given on this data sheet.

## Stainless steel L-shaped shower curtain rail, 1200mm x 1200mm



### Product details

**Warranty:** 5 years

**Max load:** N/A

**Doc M compliant:** Yes

**Suitable for wet areas:** Yes

### Features

- Tubular stainless steel construction
- Supplied with ceiling stay
- Concealed wall fixings
- Can be cut to measure on site if necessary

### Finish options

#### Powder Coated



**WH**  
White (RAL 9016)

#### Mechanical



**SP**  
Polished Stainless Steel



**SS**  
Satin Stainless Steel

### Product description

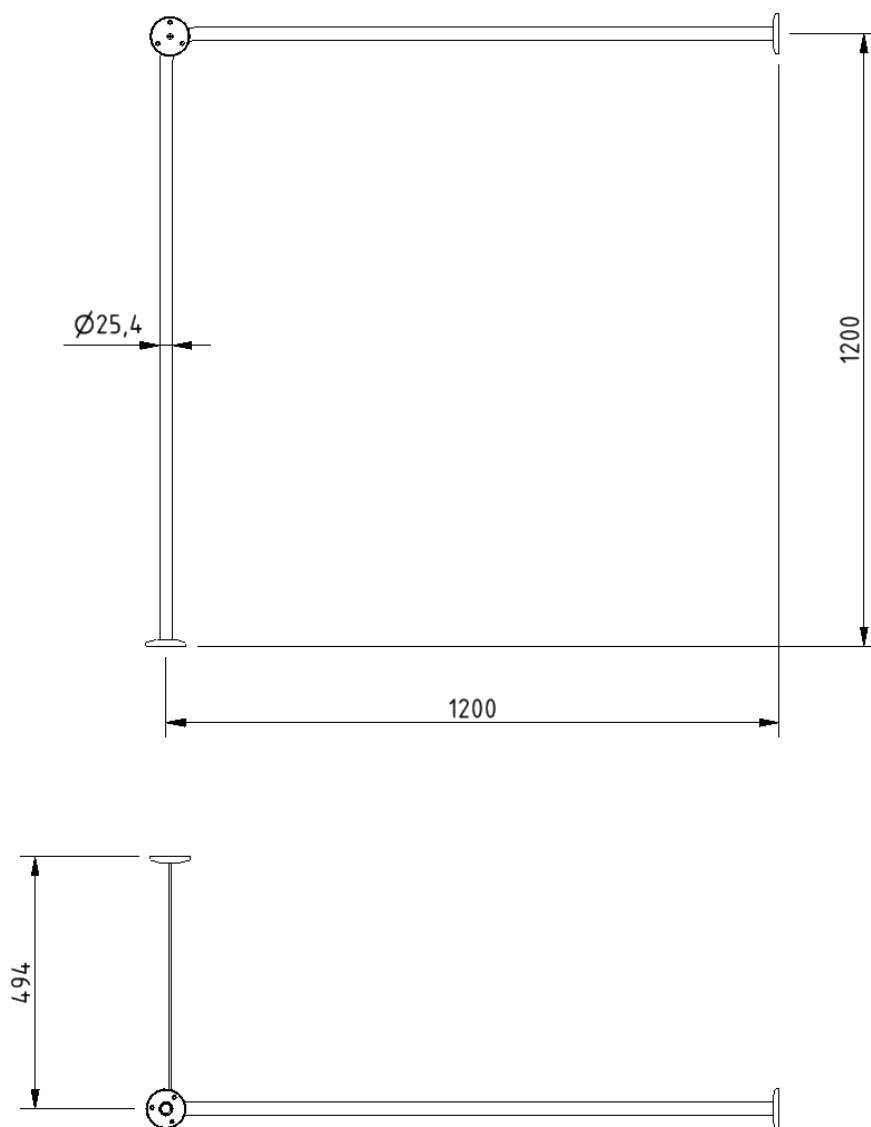
### Product code

Shower curtain rail, stainless steel, L-shaped, 1200mm x 1200mm

250502/\*\*

Replace \*\* with 2-character short code for chosen finish (Powder Coated / Mechanical).  
e.g., 250502/WH

# Dimensions (mm)



## Weighted polyester shower curtain



### Product details

**Warranty:** 5 years

**Max load:** N/A

**Doc M compliant:** Yes

**Suitable for wet areas:** Yes

### Features

- Easy clean polyester material
- Weighted curtain
- Eyelet hanging
- Durable

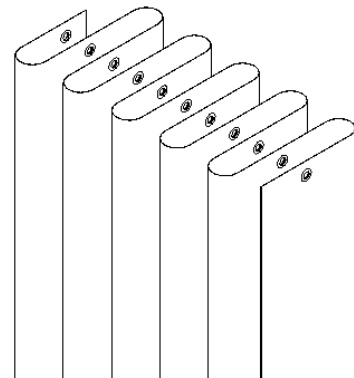
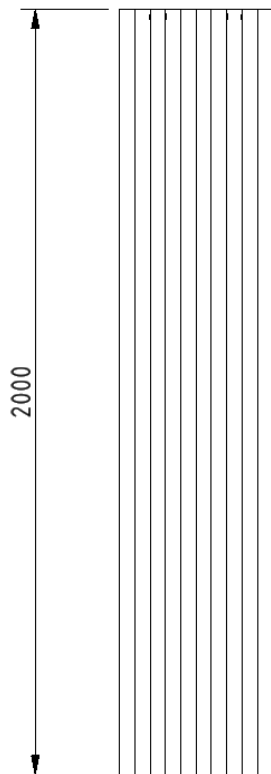
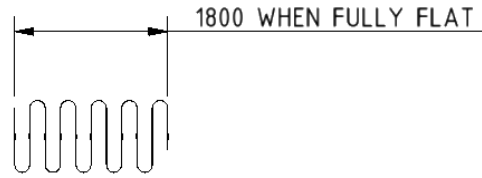
### Product description

Weighted shower curtain, polyester, 1800mm x 2000mm, white (RAL 9016)

### Product code

250603-WH

## Dimensions (mm)



## Single aluminium robe hook



### Product details

**Warranty:** 2 years

**Max load:** N/A

**Doc M compliant:** Yes

**Suitable for wet areas:** Yes

### Features

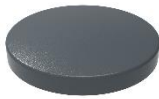
- Aluminium construction
- Colour options available for visually impaired
- Complies with Part M of the Building Regulations

## Finish options

### Powder Coated



**DB**  
Dark Blue (RAL 5011)



**DG**  
Dark Grey (RAL 7016)



**GY**  
Grey (RAL 7005)



**MB**  
Matt Black (RAL 9005)



**WH**  
White (RAL 9016)

## Product description

Single robe hook, aluminium

## Product code

141701/\*\*

Replace \*\* with 2-character short code for chosen finish (Powder Coated).  
e.g., 141701/DB

# Dimensions (mm)

