

## Back to wall ambulant Doc M toilet pack with steel concealed fixing grab rails



### Product details

**Warranty:** See individual products

**Max load:** See individual products

**Doc M compliant:** Yes

**Suitable for wet areas:** No

### Features

- Complies with Part M of the Building Regulations
- Inlet valve and syphon Reg 4 Certified (WRAS, NSF, Kiwa, etc.)
- Concealed fixing grab rails
- Simple one box solution

### Finish options

#### Powder Coated



**DB**  
Dark Blue (RAL 5011)



**DG**  
Dark Grey (RAL 7016)



**GY**  
Grey (RAL 7005)



**WH**  
White (RAL 9016)

### Product description

Back wall ambulant Doc M toilet pack, stainless steel, concealed fixings

### Product code

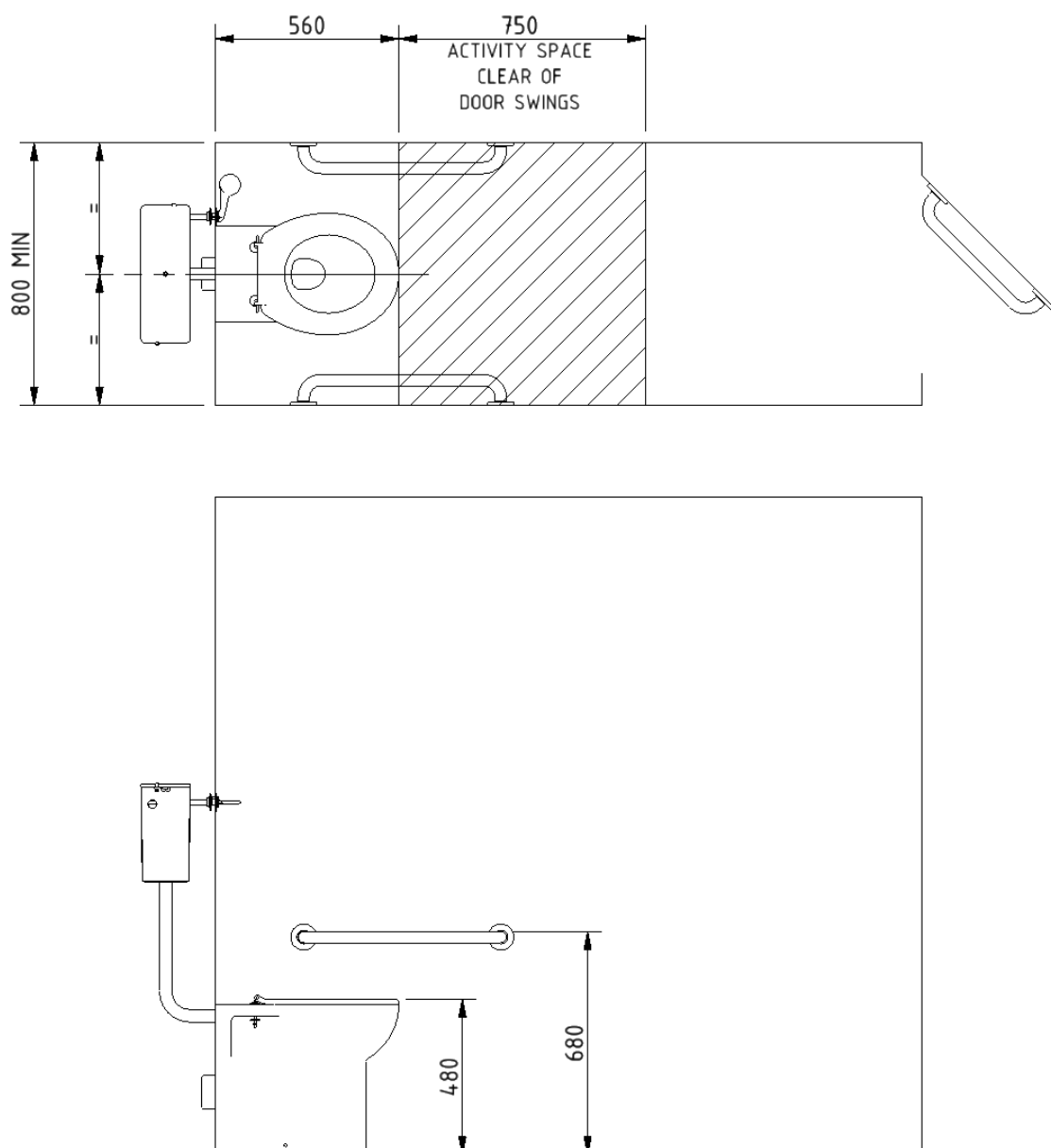
AMBBTWC/\*\*

Replace \*\* with 2-character short code for chosen finish (Powder Coated).  
e.g., AMBBTWC/DB

### Pack Contents

- 2 x 600mm coated steel grab rails with concealed fixings
- 1x 450mm coated steel grab rail with concealed fixings
- 1 x Back to wall box rim Doc M pan
- 1 x Concealed cistern with fittings, flush pipe, and Doc M concealed cistern spatula lever
- 1 x Ring only toilet seat

### Dimensions (mm)



## Back to wall box rim Doc M pan



### Product details

<b>Warranty:</b>	Lifetime
<b>Max load:</b>	400 kg
<b>Doc M compliant:</b>	Yes
<b>Suitable for wet areas:</b>	Yes

### Features

- Complies with Part M of the Building Regulations when used in conjunction with back box (BPLBOX)
- UKCA and CE compliant
- Comfort height to allow easier side transfer from wheelchair

## Finish options



**WH**  
White (RAL 9016)

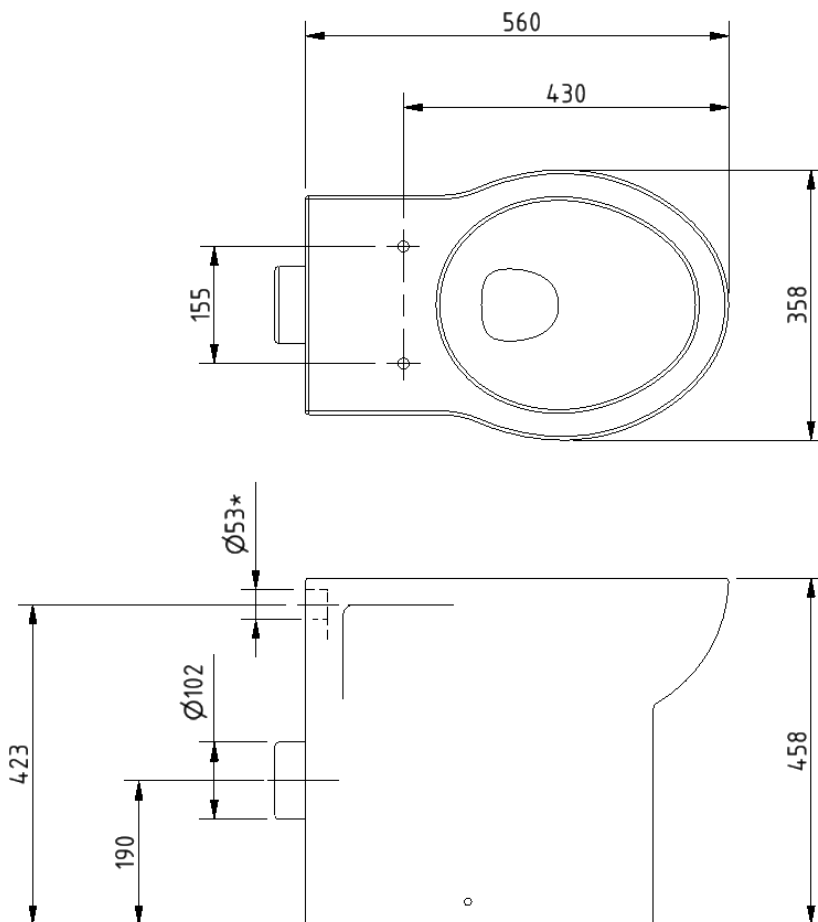
## Product description

Back to wall box rim Doc M pan

## Product code

NY01-SW-31000-WH

## Dimensions (mm)



\*USE WITH  $\varnothing 38$ MM DIAMETER FLUSH PIPE

## Concealed cistern and fittings



### Product details

**Warranty:** 2 years

**Max load:** N/A

**Doc M compliant:** N/A

**Suitable for wet areas:** Yes

### Features

- Syphon and inlet valve Reg 4 Certified (WRAS, NSF, Kiwa, etc.)
- Top access
- 6 litre flush
- Internal / external overflow warning
- High density polystyrene construction

Does not come with flush lever or flush pipe

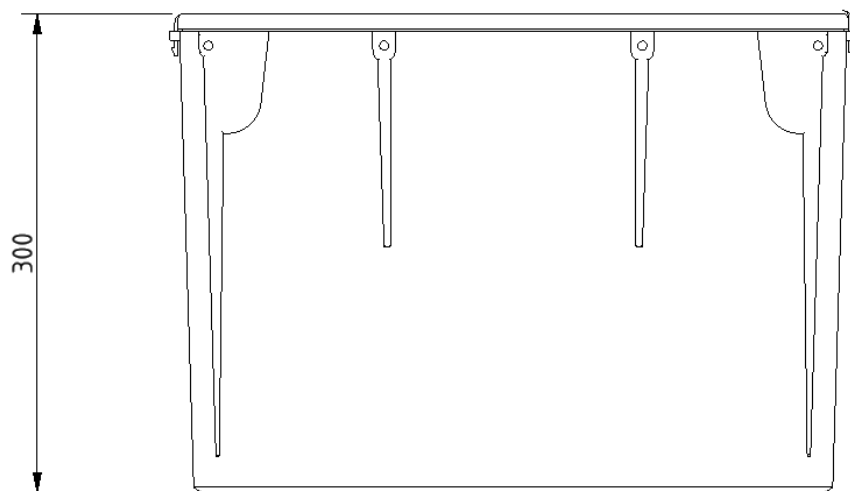
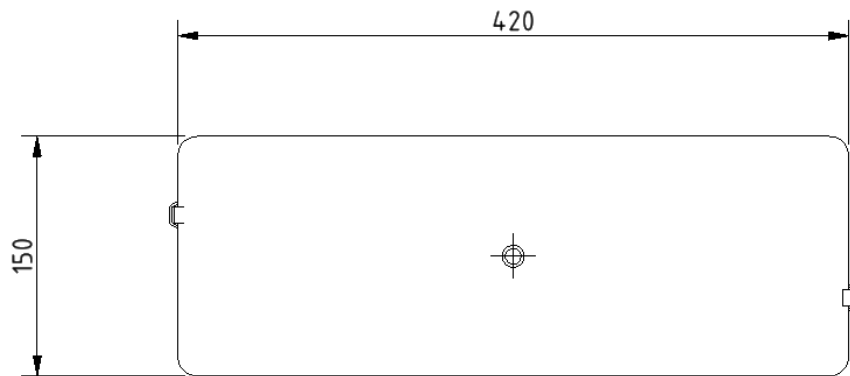
### Product description

Concealed cistern and fittings, no lever or flush pipe

### Product code

B-CISTHIDE

Dimensions (mm)



## Toilet seat, ring only, stainless steel pillar hinge



### Product details

**Warranty:** 2 years

**Max load:** 150 kg

**Doc M compliant:** Yes

**Suitable for wet areas:** Yes

### Features

- Complies with Part M of the Building Regulations
- Anti-bacterial, strong and durable Duroplast seat
- Ergonomic and comfortable shape
- Stainless steel hinge (bottom fix as standard)  
Additional hinge pack to convert to top fix: NY-TOPFIXHINGE
- Adjustable locating buffers
- Fits close coupled, low level, back to wall and wall hung pans

### Finish options



**DB**  
Dark Blue (RAL 5011)



**DG**  
Dark Grey (RAL 7016)



**GY**  
Grey (RAL 7005)



**WH**  
White (RAL 9016)

### Product description

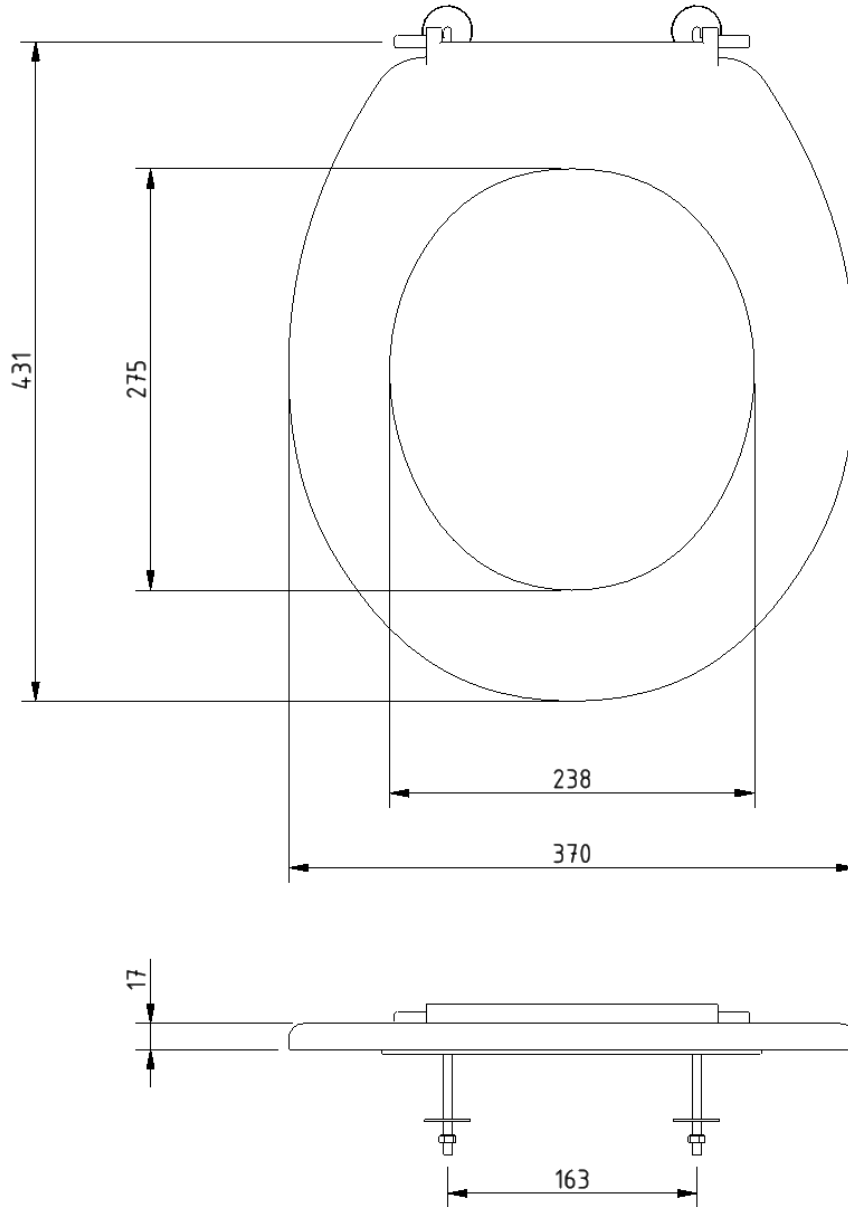
Toilet seat, ring only, stainless steel pillar hinge

### Product code

260015/\*\*

Replace \*\* with 2-character short code for chosen finish.  
e.g., 260015/DB

Dimensions (mm)





## Concealed cistern spatula lever



### Product details

**Warranty:** 2 years

**Max load:** N/A

**Doc M compliant:** Yes

**Suitable for wet areas:** Yes

### Features

- Complies with Part M of the Building Regulations
- Easy operation for users with limited dexterity
- For use with concealed cisterns

### Finish options

#### Powder Coated



**CP**  
Polished Chrome

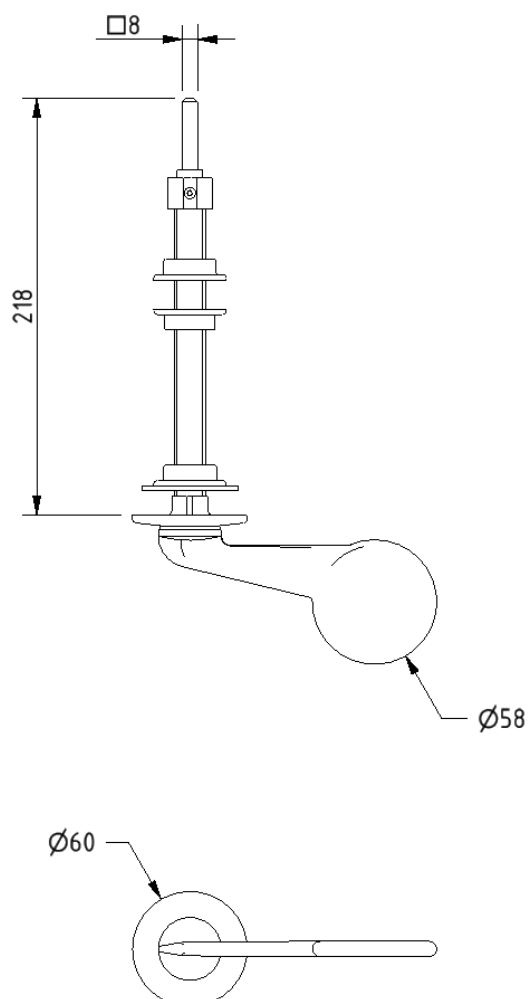
### Product description

Concealed cistern spatula lever, 215mm spindle, polished chrome

### Product code

P-000243-X00X

Dimensions (mm)



## D-Bar grab rail, steel, with concealed fixings, 35mm diameter tube



### Product details

**Warranty:** 2 years

**Max load:** 200 kg

**Doc M compliant:** Yes

**Suitable for wet areas:** No

### Features

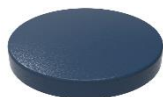
- Complies with Part M of the Building Regulations
- Robust steel construction
- Concealed Fixing Grab Rail

### Finish options

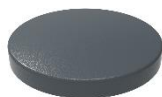
#### Powder Coated



**WH**  
White (RAL 9016)



**DB**  
Dark Blue (RAL 5011)



**DG**  
Dark Grey (RAL 7016)



**GY**  
Grey (RAL 7005)

### Product description

### Product code

Round flange grab rail, steel, concealed fixings, 35mm diameter, 300mm

G1235C/\*\*

Round flange grab rail, steel, concealed fixings, 35mm diameter, 450mm

G1835C/\*\*

Round flange grab rail, steel, concealed fixings, 35mm diameter, 600mm

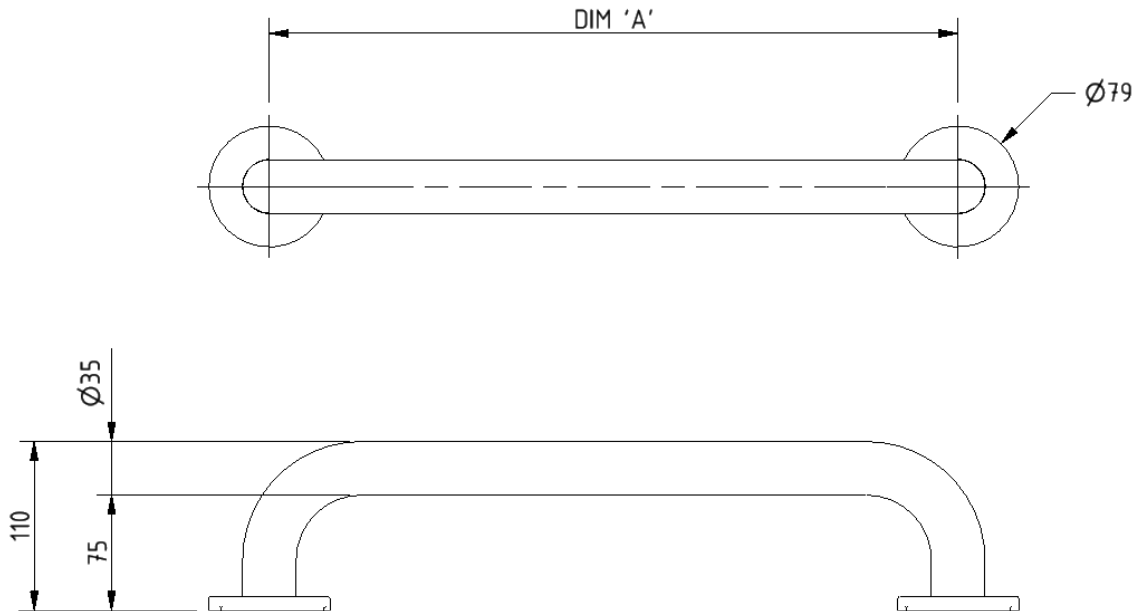
G2435C/\*\*

Round flange grab rail, steel, concealed fixings, 35mm diameter, 900mm

G3635C/\*\*

Replace \*\* with 2-character short code for chosen finish (Powder Coated).  
e.g., G1235C/WH

Dimensions (mm)



PRODUCT CODE	G1235C/**	G1835C/**	G2435C/**	G3635C/**
DIM 'A'	300	450	600	900