

Back to wall ambulant Doc M toilet pack with stainless steel concealed fixing grab rails



Product details

Warranty: See individual products

Max load: See individual products

Doc M compliant: Yes

Suitable for wet areas: Yes

Features

- Complies with Part M of the Building Regulations
- Inlet valve and syphon Reg 4 Certified (WRAS, NSF, Kiwa, etc.)
- Concealed fixing stainless steel grab rails
- Simple one box solution

Finish options

Powder Coated



DB
Dark Blue (RAL 5011)



DG
Dark Grey (RAL 7016)



GY
Grey (RAL 7005)



WH
White (RAL 9016)

Mechanical



SP
Polished Stainless Steel



SS
Satin Stainless Steel

Product description

Product code

Back to wall ambulant Doc M toilet pack, stainless steel, concealed fixings

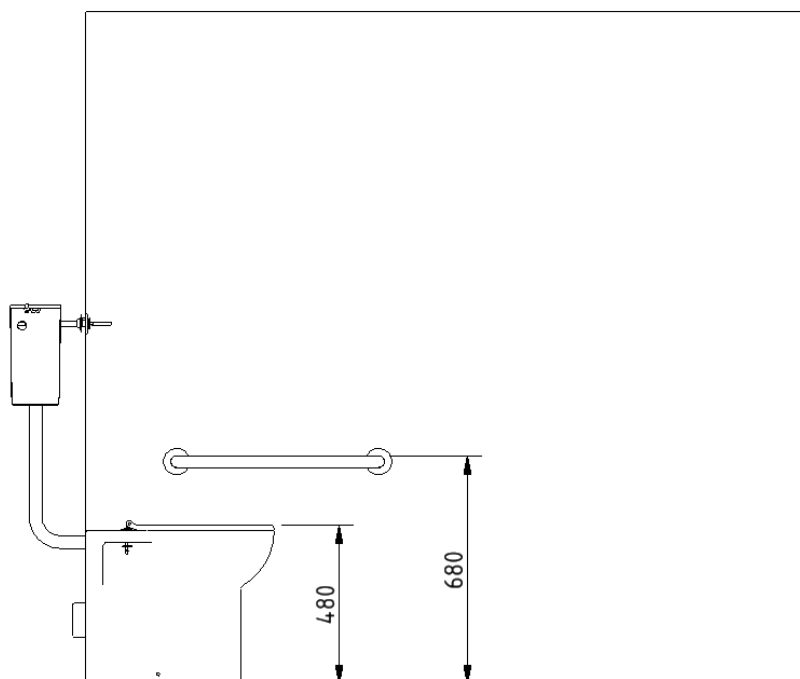
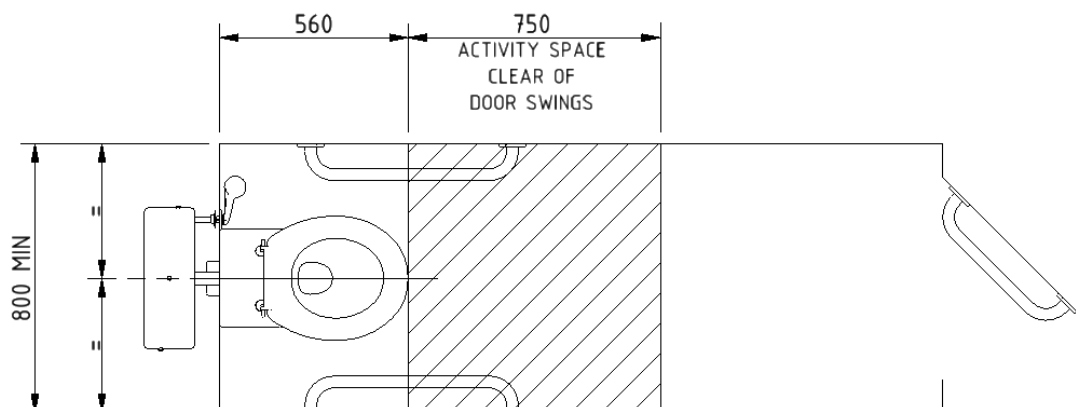
AMBBTWCS/**

Replace ** with 2-character code for chosen finish (Powder Coated / Mechanical).
e.g., AMBBTWCS/DB

Pack contents

- 2 x 600mm stainless steel grab rails with concealed fixings
- 1x 450mm stainless steel grab rail with concealed fixings
- 1 x Back to wall box rim Doc M pan
- 1 x Concealed cistern with fittings, flush pipe, and Doc M concealed cistern spatula lever
- 1 x Ring only toilet seat

Dimensions (mm)



Back to wall box rim Doc M pan



Product details

Warranty:	Lifetime
Max load:	400 kg
Doc M compliant:	Yes
Suitable for wet areas:	Yes

Features

- Complies with Part M of the Building Regulations when used in conjunction with back box (BPLBOX)
- UKCA and CE compliant
- Comfort height to allow easier side transfer from wheelchair

Finish options



WH
White (RAL 9016)

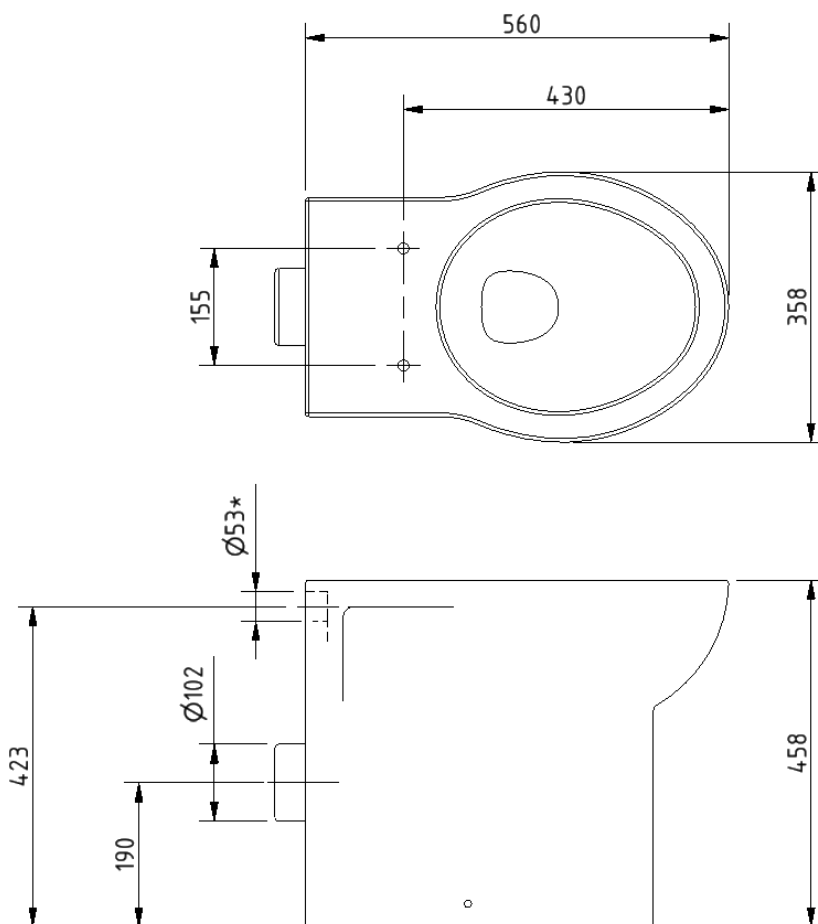
Product description

Back to wall box rim Doc M pan

Product code

NY01-SW-31000-WH

Dimensions (mm)



*USE WITH $\varnothing 38$ MM DIAMETER FLUSH PIPE

Concealed cistern and fittings



Product details

Warranty: 2 years

Max load: N/A

Doc M compliant: N/A

Suitable for wet areas: Yes

Features

- Syphon and inlet valve Reg 4 Certified (WRAS, NSF, Kiwa, etc.)
- Top access
- 6 litre flush
- Internal / external overflow warning
- High density polystyrene construction

Does not come with flush lever or flush pipe

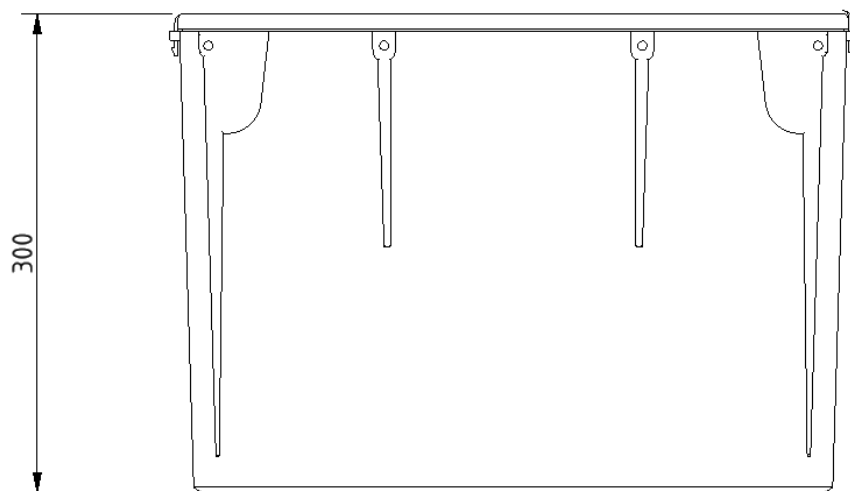
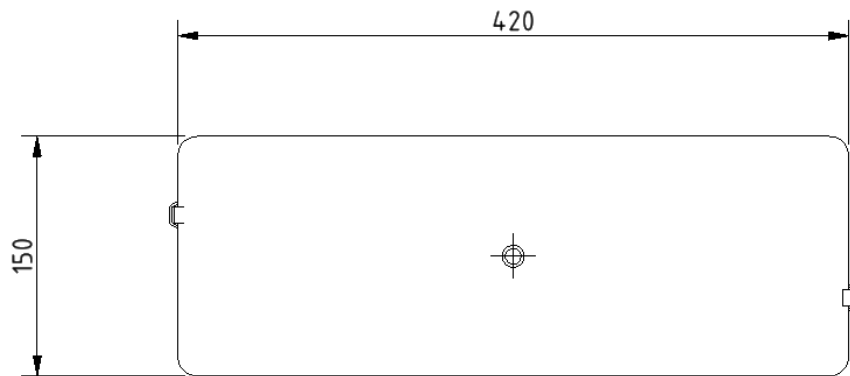
Product description

Concealed cistern and fittings, no lever or flush pipe

Product code

B-CISTHIDE

Dimensions (mm)



Concealed cistern spatula lever



Product details

Warranty: 2 years

Max load: N/A

Doc M compliant: Yes

Suitable for wet areas: Yes

Features

- Complies with Part M of the Building Regulations
- Easy operation for users with limited dexterity
- For use with concealed cisterns

Finish options

Powder Coated



CP
Polished Chrome

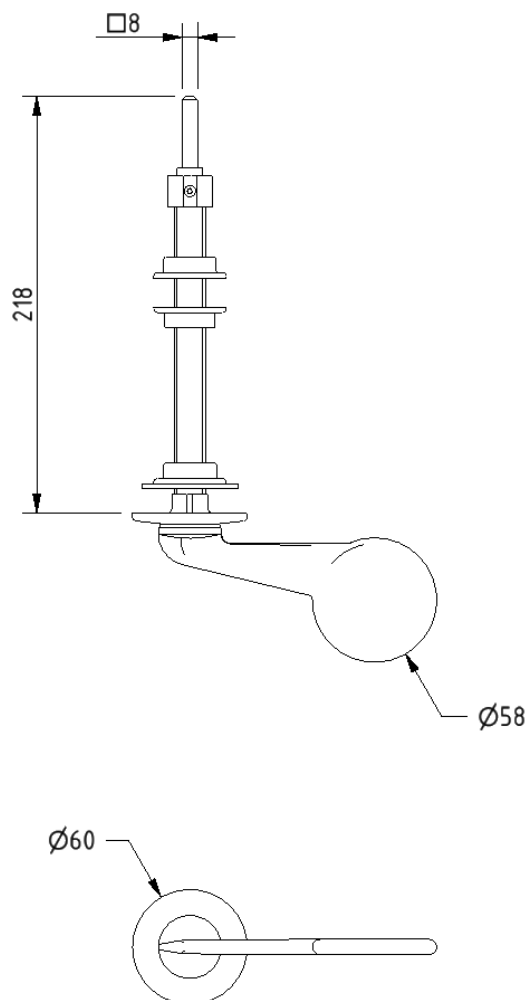
Product description

Concealed cistern spatula lever, 215mm spindle, polished chrome

Product code

P-000243-X00X

Dimensions (mm)



Toilet seat, ring only, stainless steel pillar hinge



Product details

Warranty: 2 years

Max load: 150 kg

Doc M compliant: Yes

Suitable for wet areas: Yes

Features

- Complies with Part M of the Building Regulations
- Anti-bacterial, strong and durable Duroplast seat
- Ergonomic and comfortable shape
- Stainless steel hinge (bottom fix as standard)
Additional hinge pack to convert to top fix: NY-TOPFIXHINGE
- Adjustable locating buffers
- Fits close coupled, low level, back to wall and wall hung pans

Finish options



DB
Dark Blue (RAL 5011)



DG
Dark Grey (RAL 7016)



GY
Grey (RAL 7005)



WH
White (RAL 9016)

Product description

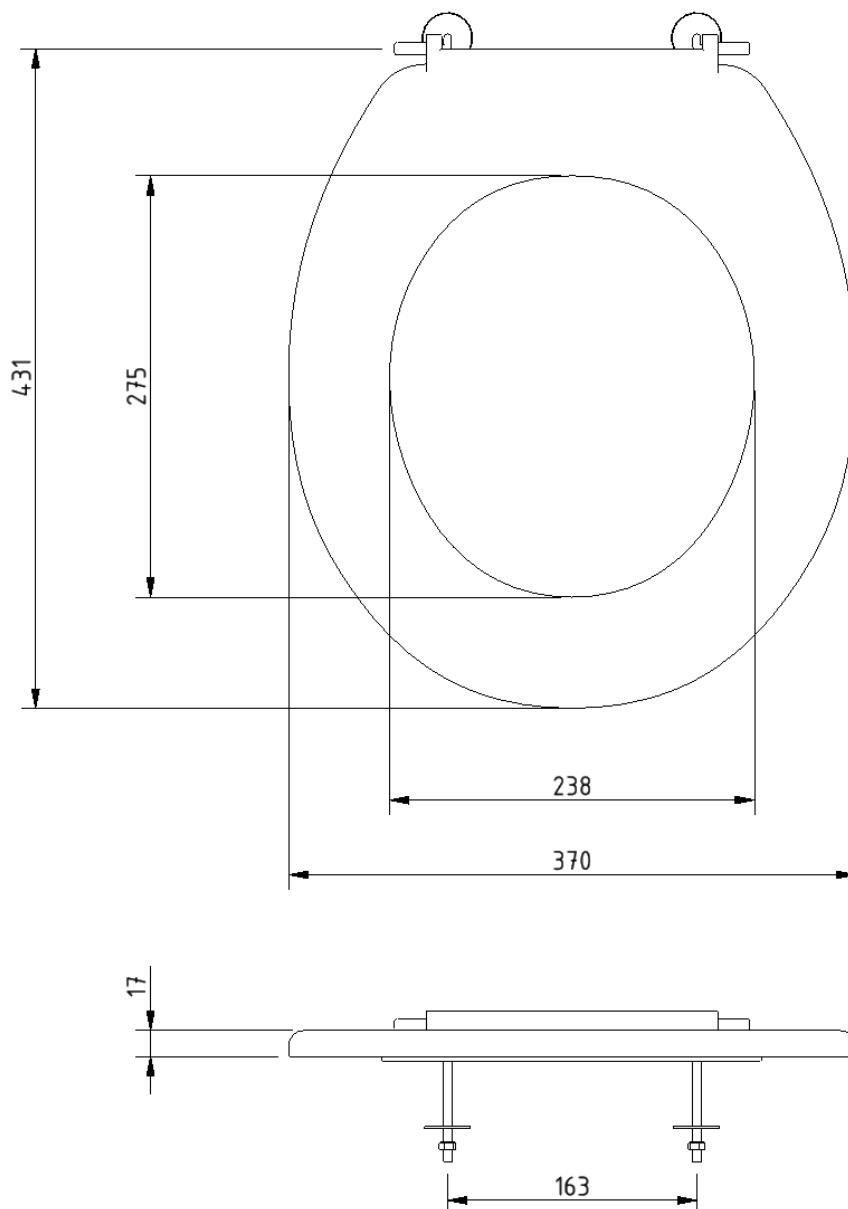
Toilet seat, ring only, stainless steel pillar hinge

Product code

260015/**

Replace ** with 2-character short code for chosen finish.
e.g., 260015/DB

Dimensions (mm)



Stainless steel grab rail with concealed fixings, 35mm diameter tube



Product details

Warranty:	5 Years
Max load:	185 kg
Doc M compliant:	Yes
Suitable for wet areas:	Yes

Features

- Stainless steel construction
- Durable powder coated finish
- Concealed fixing

Finish options

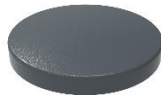
Powder coated



WH
White (RAL 9016)



DB
Dark Blue (RAL 5011)



DG
Dark Grey (RAL 7016)



GY
Grey (RAL 7005)

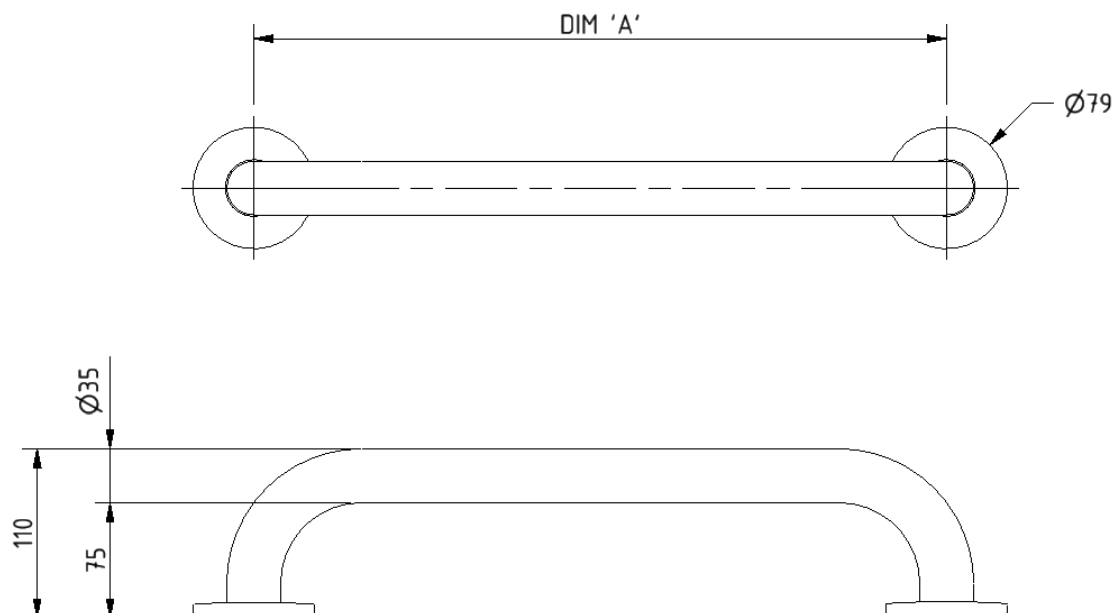
Product description

Product code

Grab rail, stainless steel, concealed fixings, 35mm diameter, 300mm	210130/**
Grab rail, stainless steel, concealed fixings, 35mm diameter, 450mm	210145/**
Grab rail, stainless steel, concealed fixings, 35mm diameter, 600mm	210160/**
Grab rail, stainless steel, concealed fixings, 35mm diameter, 900mm	210190/**

Replace ** with 2-character short code for chosen finish.
e.g., 210130/WH

Dimensions (mm)



PRODUCT CODE	210130/**	210145/**	210160/**	210190/**
DIM 'A'	300	450	600	900