

Back to wall Doc M toilet pack with stainless steel concealed fixing grab rails



Product details

Warranty:	See individual products
Max load:	See individual products
Doc M compliant:	Yes
Suitable for wet areas:	Yes

Features

- Complies with Part M of the Building Regulations
- Inlet valve and syphon Reg 4 Certified (WRAS, NSF, Kiwa, etc.)
- Concealed fixing stainless steel grab rails
- Optional TMV3 Valve (DM820KCS/**)
- Universal – suitable for left / right handed transfer
- Simple one box solution

Finish options

Powder Coated



DB
Dark Blue (RAL 5011)



DG
Dark Grey (RAL 7016)



GY
Grey (RAL 7005)



WH
White (RAL 9016)

Mechanical



SP
Polished Stainless Steel



SS
Satin Stainless Steel

Product description

Product code

Back to wall Doc M toilet pack, stainless steel, concealed fixings

DM800KCS/**

Back to wall Doc M toilet pack, stainless steel, concealed fixings, TMV3 valve

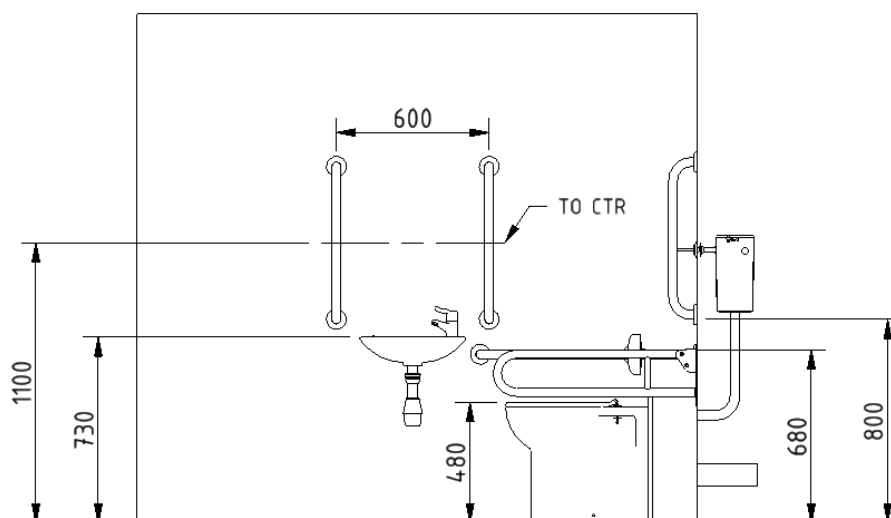
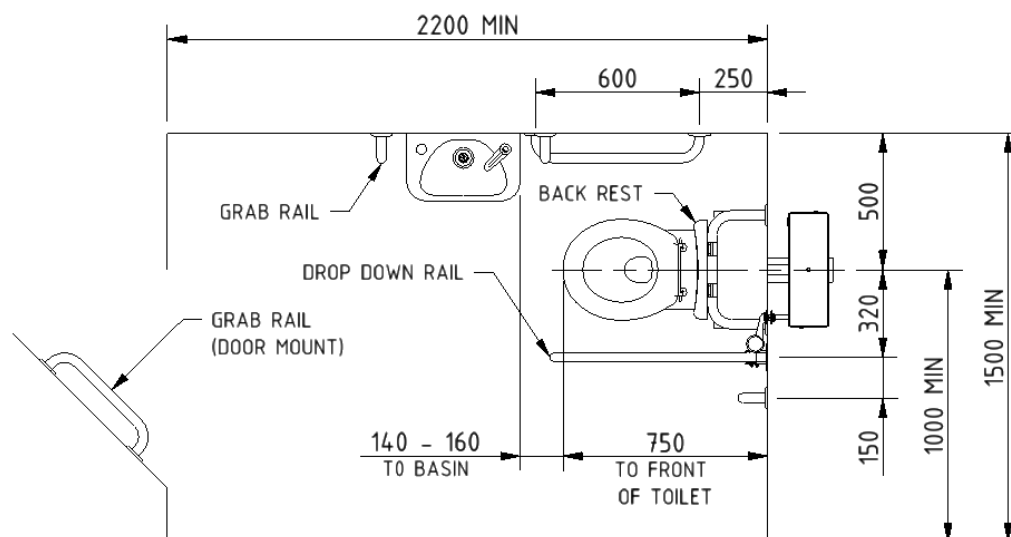
DM820KCS/**

Replace ** with 2-character code for chosen finish (Powder Coated / Mechanical).
e.g., DM800KCS/DB

Pack contents

- 4 x 600mm stainless steel grab rails with concealed fixings
- 1 x 450mm stainless steel grab rail with concealed fixings
- 1 x 800mm stainless steel hinged support rail
- 1 x 270mm stainless steel back rest rail and pad with concealed fixing
- 1 x Back to wall box rim Doc M pan
- 1 x Back box for back to wall Doc M pan
- 1 x Concealed cistern with fittings, flush pipe, and Doc M concealed cistern spatula lever
- 1 x Ring only toilet seat
- 1 x Compact finger rinse Doc M basin
- 1 x Sequential basin mixer tap
- 1 x Tap hole stopper
- 1 x Basin waste
- 1 x TMV3 Valve (DM820KCS/** only)

Dimensions (mm)



Fitzroy of London may occasionally need to change specification of products and/or kit contents and reserves the right to do so. We strive to keep our documentation up to date; however, we cannot guarantee this. We accept no liability for any information given on this data sheet.

Back to wall box rim Doc M pan



Product details

Warranty:	Lifetime
Max load:	400 kg
Doc M compliant:	Yes
Suitable for wet areas:	Yes

Features

- Complies with Part M of the Building Regulations when used in conjunction with back box (BPLBOX)
- UKCA and CE compliant
- Comfort height to allow easier side transfer from wheelchair

Finish options



WH
White (RAL 9016)

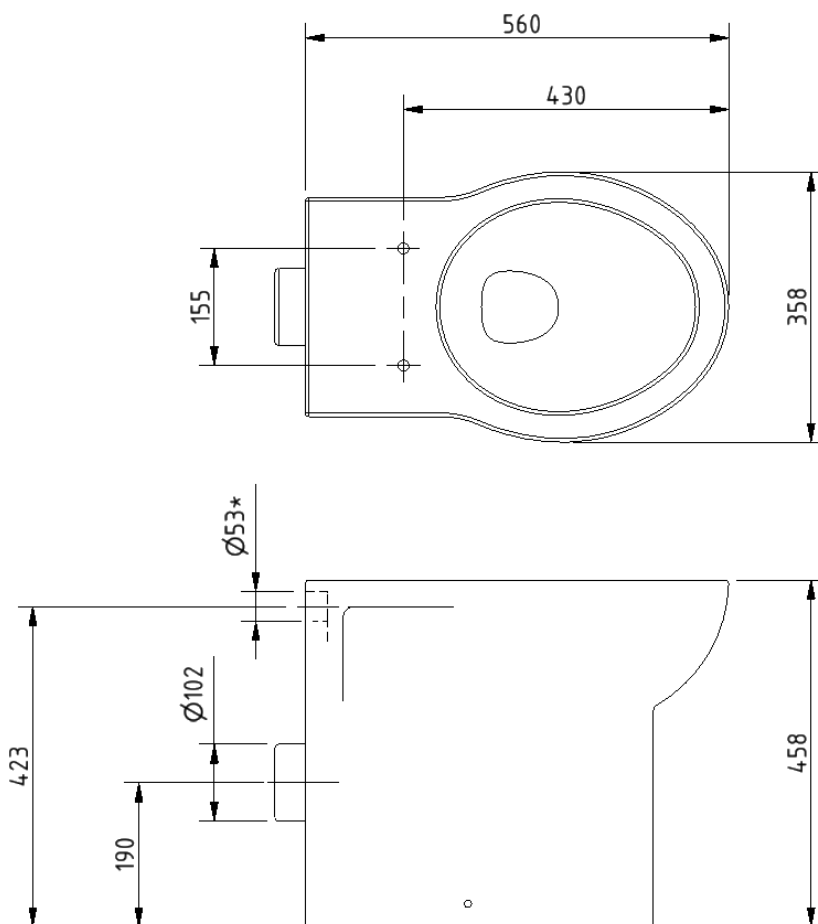
Product description

Back to wall box rim Doc M pan

Product code

NY01-SW-31000-WH

Dimensions (mm)



*USE WITH $\varnothing 38$ MM DIAMETER FLUSH PIPE

Concealed cistern and fittings



Product details

Warranty: 2 years

Max load: N/A

Doc M compliant: N/A

Suitable for wet areas: Yes

Features

- Syphon and inlet valve Reg 4 Certified (WRAS, NSF, Kiwa, etc.)
- Top access
- 6 litre flush
- Internal / external overflow warning
- High density polystyrene construction

Does not come with flush lever or flush pipe

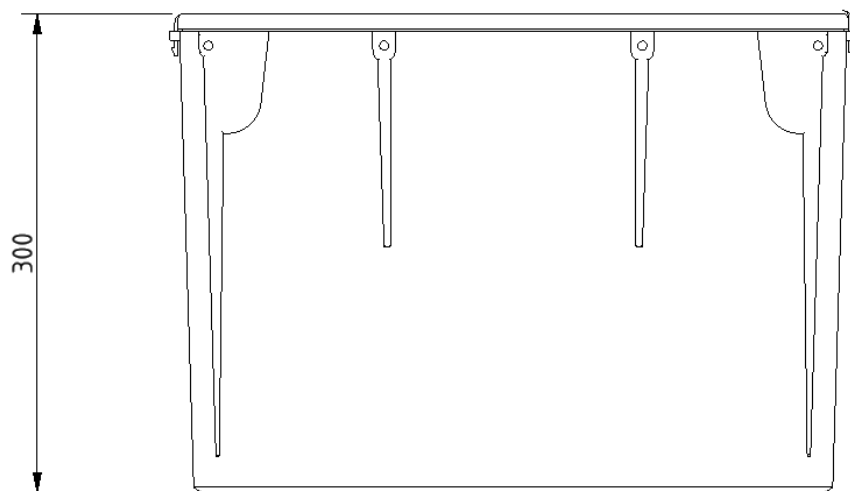
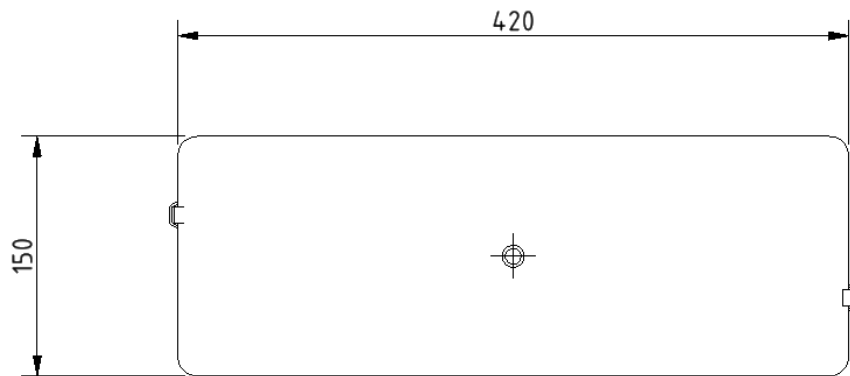
Product description

Concealed cistern and fittings, no lever or flush pipe

Product code

B-CISTHIDE

Dimensions (mm)



Concealed cistern spatula lever



Product details

Warranty: 2 years

Max load: N/A

Doc M compliant: Yes

Suitable for wet areas: Yes

Features

- Complies with Part M of the Building Regulations
- Easy operation for users with limited dexterity
- For use with concealed cisterns

Finish options

Powder Coated



CP
Polished Chrome

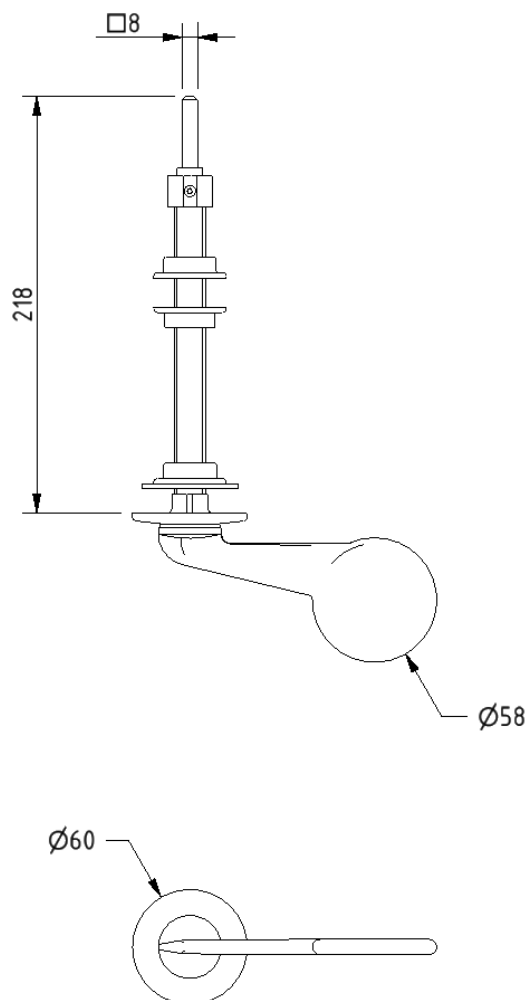
Product description

Concealed cistern spatula lever, 215mm spindle, polished chrome

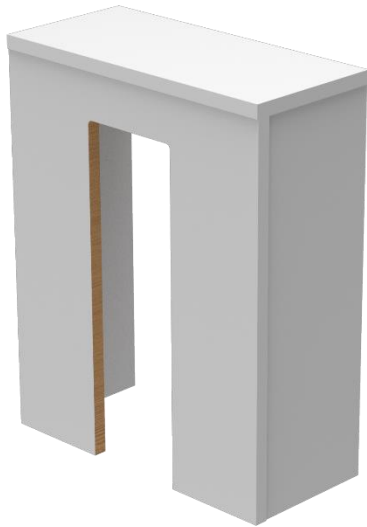
Product code

P-000243-X00X

Dimensions (mm)



Back box for back to wall pan



Product details

Warranty: 2 years

Max load: N/A

Doc M compliant: Yes

Suitable for wet areas: No

Features

- Easy to install flat pack solution
- Solid melamine faced chipboard construction
- For use with back to wall pan to aid compliance with Part M of the Building Regulations

Finish options



WH
White (RAL 9016)

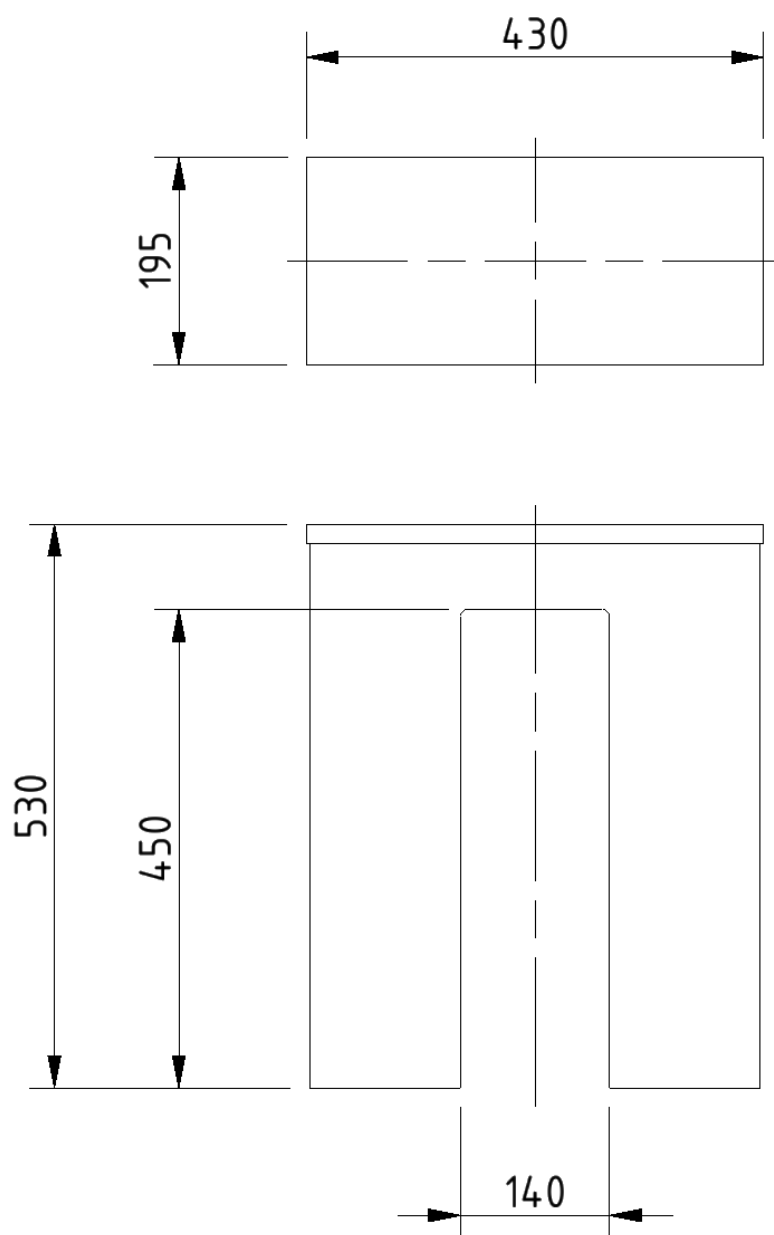
Product description

Back box for back to wall pan, white

Product code

BPLBOX

Dimensions (mm)



Toilet seat, ring only, stainless steel pillar hinge



Product details

Warranty: 2 years

Max load: 150 kg

Doc M compliant: Yes

Suitable for wet areas: Yes

Features

- Complies with Part M of the Building Regulations
- Anti-bacterial, strong and durable Duroplast seat
- Ergonomic and comfortable shape
- Stainless steel hinge (bottom fix as standard)
Additional hinge pack to convert to top fix: NY-TOPFIXHINGE
- Adjustable locating buffers
- Fits close coupled, low level, back to wall and wall hung pans

Finish options



DB
Dark Blue (RAL 5011)



DG
Dark Grey (RAL 7016)



GY
Grey (RAL 7005)



WH
White (RAL 9016)

Product description

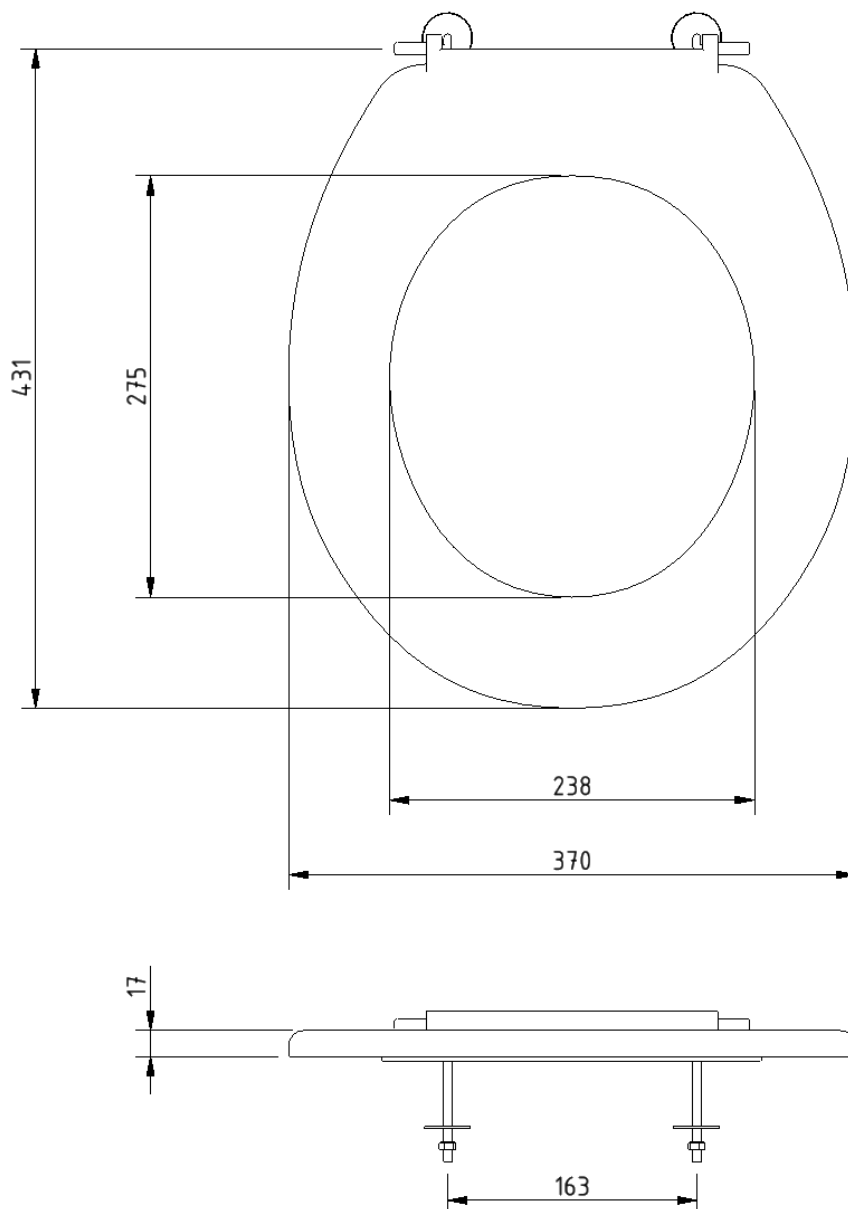
Toilet seat, ring only, stainless steel pillar hinge

Product code

260015/**

Replace ** with 2-character short code for chosen finish.
e.g., 260015/DB

Dimensions (mm)



Compact finger rinse Doc M basin



Product details

Warranty: Lifetime

Max load: N/A

Doc M compliant: Yes

Suitable for wet areas: Yes

Features

- Two tap holes for left or right-handed configuration
- Compact design to maximise space for a wheelchair user
- Complies with Part M of the Building Regulations
- Contemporary design
- No overflow
- CE Marked, compliant sanitary ware
- Wall fixings included

Finish options



WH
White (RAL 9016)

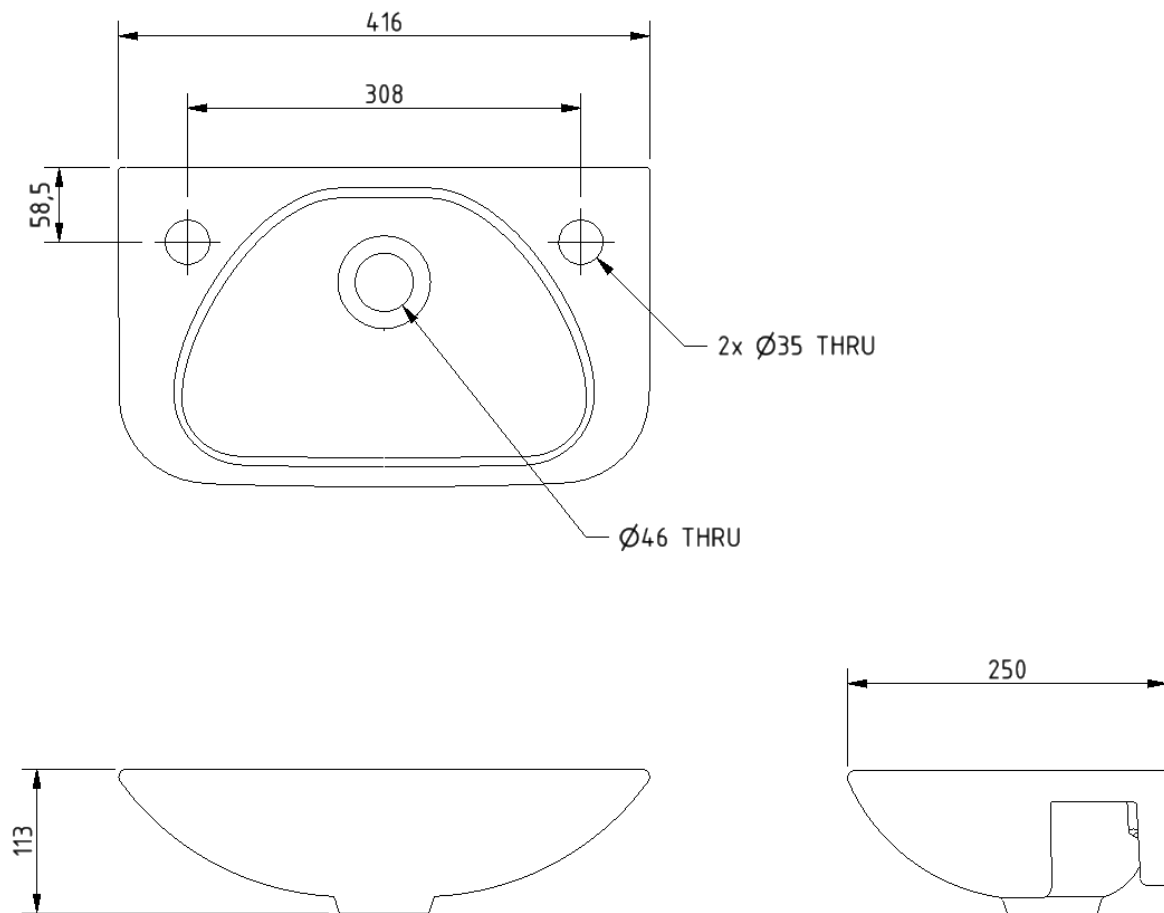
Product description

Compact finger rinse Doc M basin, two tap holes, no overflow, white (RAL 9016)

Product code

F20-BA01-CER-WH

Dimensions (mm)



Basin waste with stainless steel grid



Product details

Warranty: 2 years

Max load: N/A

Doc M compliant: Yes

Suitable for wet areas: Yes

Features

- Slotted type for use with basins without overflow
- Manufactured from high quality materials
- Quick and simple installation

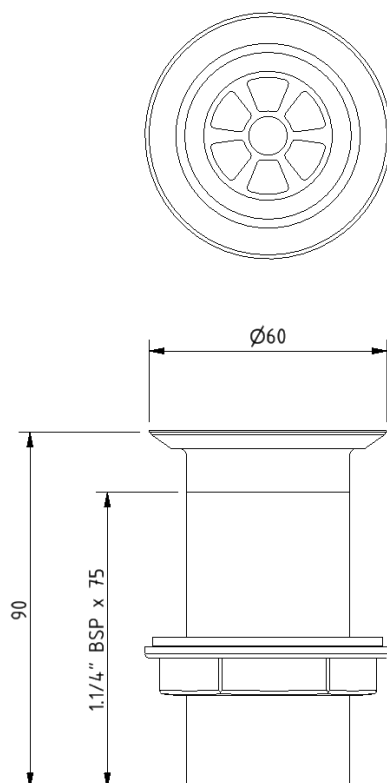
Product description

Basin waste, plastic body, white, stainless grid, unslotted, 1-1/4" BSP thread

Product code

P-000245-X00X

Dimensions (mm)



Fitzroy of London may occasionally need to change specification of products and/or kit contents and reserves the right to do so. We strive to keep our documentation up to date; however, we cannot guarantee this. We accept no liability for any information given on this data sheet.

Need some product advice? Contact our team of product specialists
+44(0)1642 710 719 | sales@fitzroyoflondon.com
www.fitzroyoflondon.com

Polished chrome sequential basin mixer tap



Product details

Warranty:	2 years
Max load:	N/A
Doc M compliant:	Yes
Suitable for wet areas:	Yes
Flexi tap tail connection (to tap body):	M10 thread
Flexi tap tail (onward connection):	½ inch BSP

Features

- Reg 4 certified (WRAS, NSF, Kiwa, etc.)
- Easy operation for users with limited dexterity
- Cold start

Finish options



CP
Polished Chrome

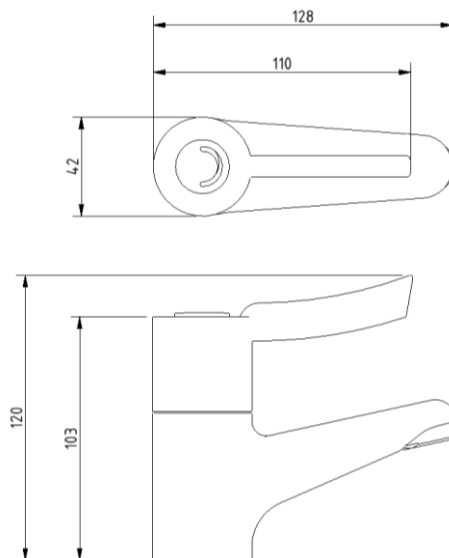
Product description

Sequential basin mixer tap, polished chrome

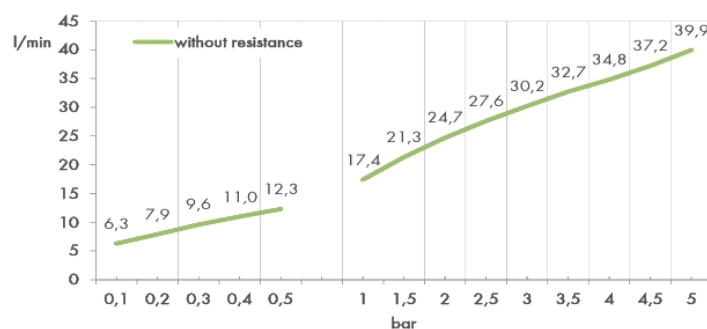
Product code

BPLMON

Dimensions (mm)



FLOW RATE CURVE



FLOW RATE & HYSTERESIS CURVES

