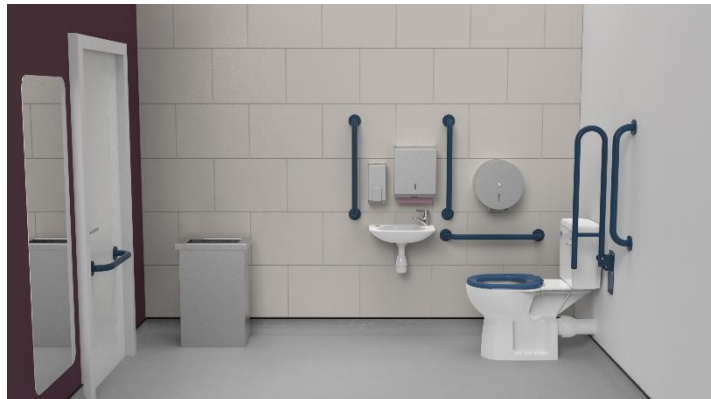


## Close coupled Doc M toilet pack with stainless steel concealed fixing grab rails



### Product details

**Warranty:** See individual products

**Max load:** See individual products

**Doc M compliant:** Yes

**Suitable for wet areas:** Yes

### Features

- Complies with Part M of the Building Regulations
- Inlet valve and syphon Reg 4 Certified (WRAS, NSF, Kiwa, etc.)
- Hygienic rimless pan with robust dedicated seat
- Concealed fixing stainless steel grab rails
- Optional TMV3 Valve (F21-CCTX-SSC-\*\* & F21-CCTL-SSC-\*\*)
- Optional lockable cistern (F21-CCLX-SSC-\*\* & F21-CCTL-SSC-\*\*)
- Universal – suitable for left or right-handed transfer
- Simple one box solution

### Finish options

#### Powder Coated



**DB**  
Dark Blue (RAL 5011)



**DG**  
Dark Grey (RAL 7016)



**GY**  
Grey (RAL 7005)



**WH**  
White (RAL 9016)

#### Mechanical



**SP**  
Polished Stainless Steel



**SS**  
Satin Stainless Steel

### Product description

### Product code

Close coupled Doc M toilet pack, stainless steel, concealed fixings

F21-CCXX-SSC-\*\*

Close coupled Doc M toilet pack, lockable cistern lid, stainless steel, concealed fixings

F21-CCLX-SSC-\*\*

Close coupled Doc M toilet pack, stainless steel, concealed fixings, TMV3 valve

F21-CCTX-SSC-\*\*

Close coupled Doc M toilet pack, lockable cistern, stainless steel, concealed fixings, TMV3 valve

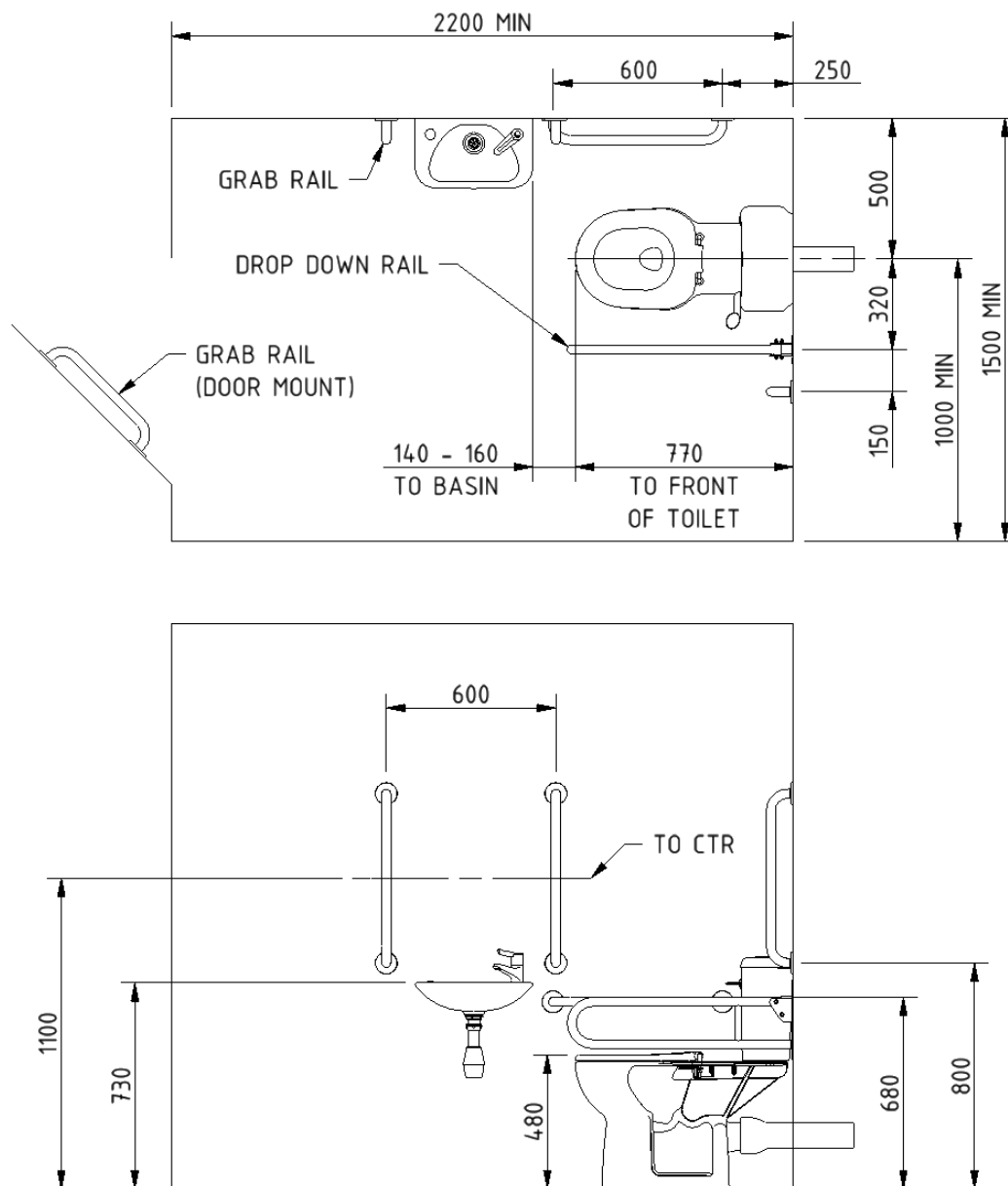
F21-CCTL-SSC-\*\*

Replace \*\* with 2-character code for chosen finish (Powder Coated / Mechanical).  
e.g., F21-CCXX-SSC-DB

### Pack contents

- 4 x 600mm stainless steel grab rails with concealed fixings
- 1 x 450mm stainless steel grab rail with concealed fixings
- 1 x 800mm stainless steel hinged support rail
- 1 x Close coupled rimless Doc M pan
- 1 x Close coupled cistern (optional lockable lid)
- 1 x Close coupled cistern fittings and Doc M spatula lever
- 1 x Ring only toilet seat
- 1 x Compact finger rinse Doc M basin
- 1 x Sequential basin mixer tap
- 1 x Tap hole stopper
- 1 x Basin waste
- 1 x TMV3 Valve (F21-CCTL-SSC-\*\* & F21-CCTX-SSC-\*\*)

### Dimensions (mm)



Fitzroy of London may occasionally need to change specification of products and/or kit contents and reserves the right to do so. We strive to keep our documentation up to date; however, we cannot guarantee this. We accept no liability for any information given on this data sheet.

## Close coupled rimless Doc M pan



### Product details

<b>Warranty:</b>	Lifetime
<b>Max load:</b>	400 kg
<b>Doc M compliant:</b>	Yes
<b>Suitable for wet areas:</b>	Yes

### Features

- Extended projection to comply with Part M of the Building Regulations
- Rimless design for ease of cleaning
- Comfort height to allow easier side transfer from wheelchair
- UKCA & CE compliant
- Ceramic body

### Finish options



**WH**  
White (RAL 9016)

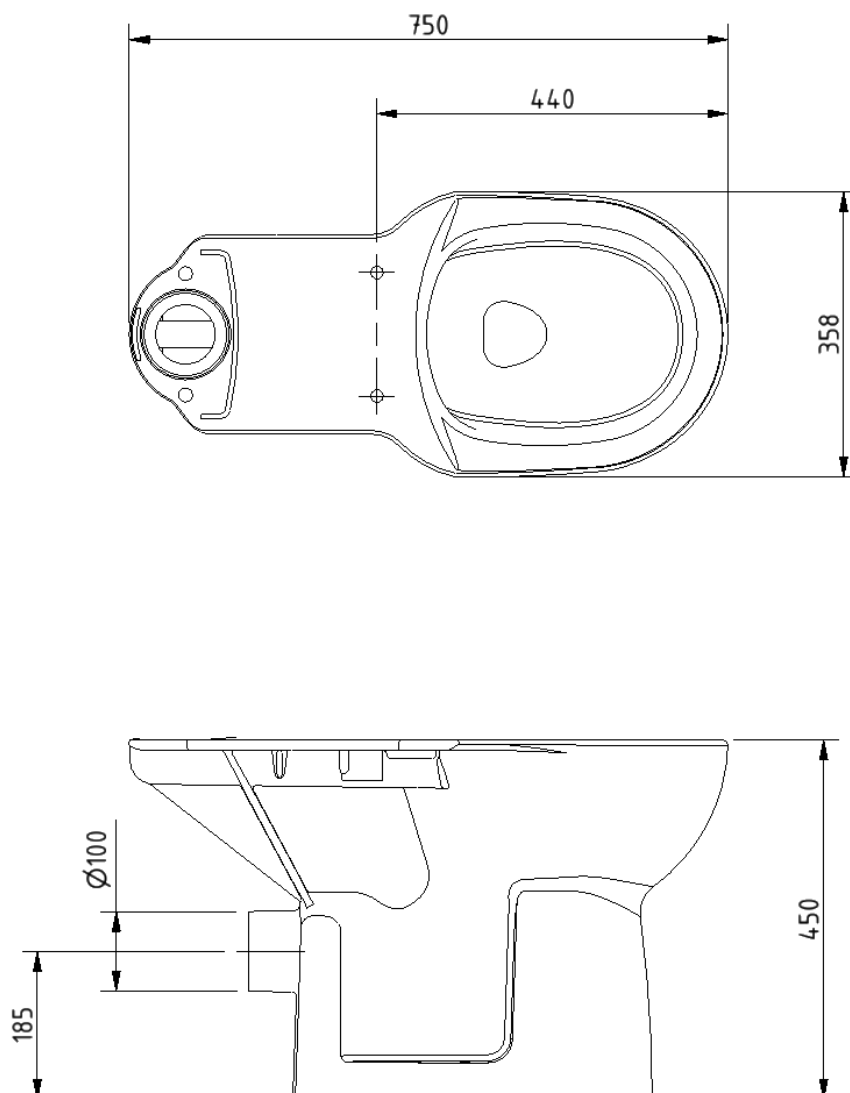
### Product description

Close coupled rimless Doc M pan, white

### Product code

NY01-PANCC02-WH

Dimensions (mm)



## Close coupled minimal cistern tank



### Product details

<b>Warranty:</b>	Lifetime
<b>Max load:</b>	N/A
<b>Doc M compliant:</b>	Yes
<b>Suitable for wet areas:</b>	Yes

### Features

- Modern minimal design
- Complies with Part M of the Building Regulations
- UKCA & CE compliant
- Suitable for front lever
- Bottom inlet
- Universal - either left or right handed
- Lockable lid option

## Finish options



**WH**  
White (RAL 9016)

## Product description

## Product code

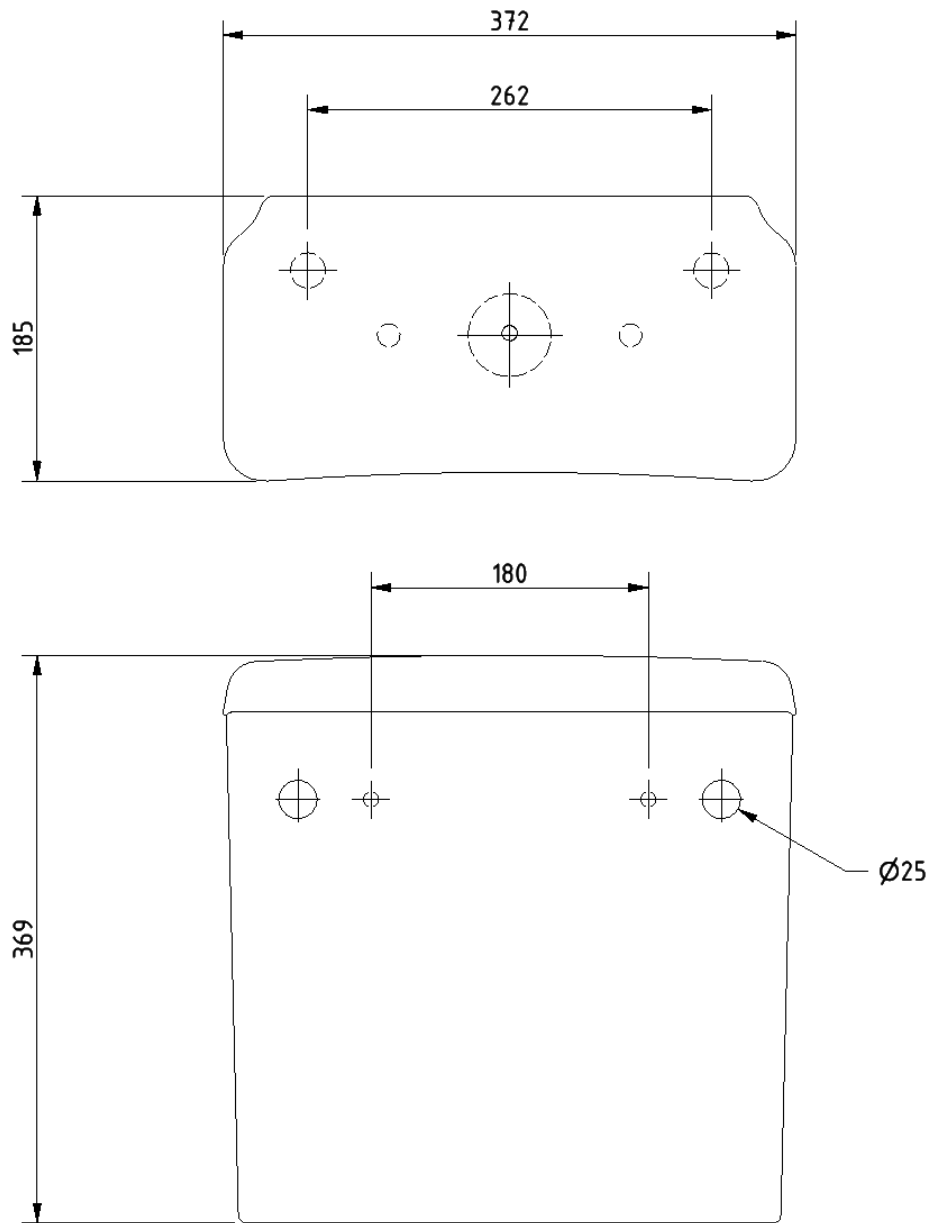
Minimal close coupled cistern, white

BWCISTCC-SAN

Minimal close coupled cistern with lockable lid, white

BWCISTCC/LC-SAN

Dimensions (mm)



## Compact finger rinse Doc M basin



### Product details

**Warranty:** Lifetime

**Max load:** N/A

**Doc M compliant:** Yes

**Suitable for wet areas:** Yes

### Features

- Two tap holes for left or right-handed configuration
- Compact design to maximise space for a wheelchair user
- Complies with Part M of the Building Regulations
- Contemporary design
- No overflow
- CE Marked, compliant sanitary ware
- Wall fixings included

### Finish options



**WH**  
White (RAL 9016)

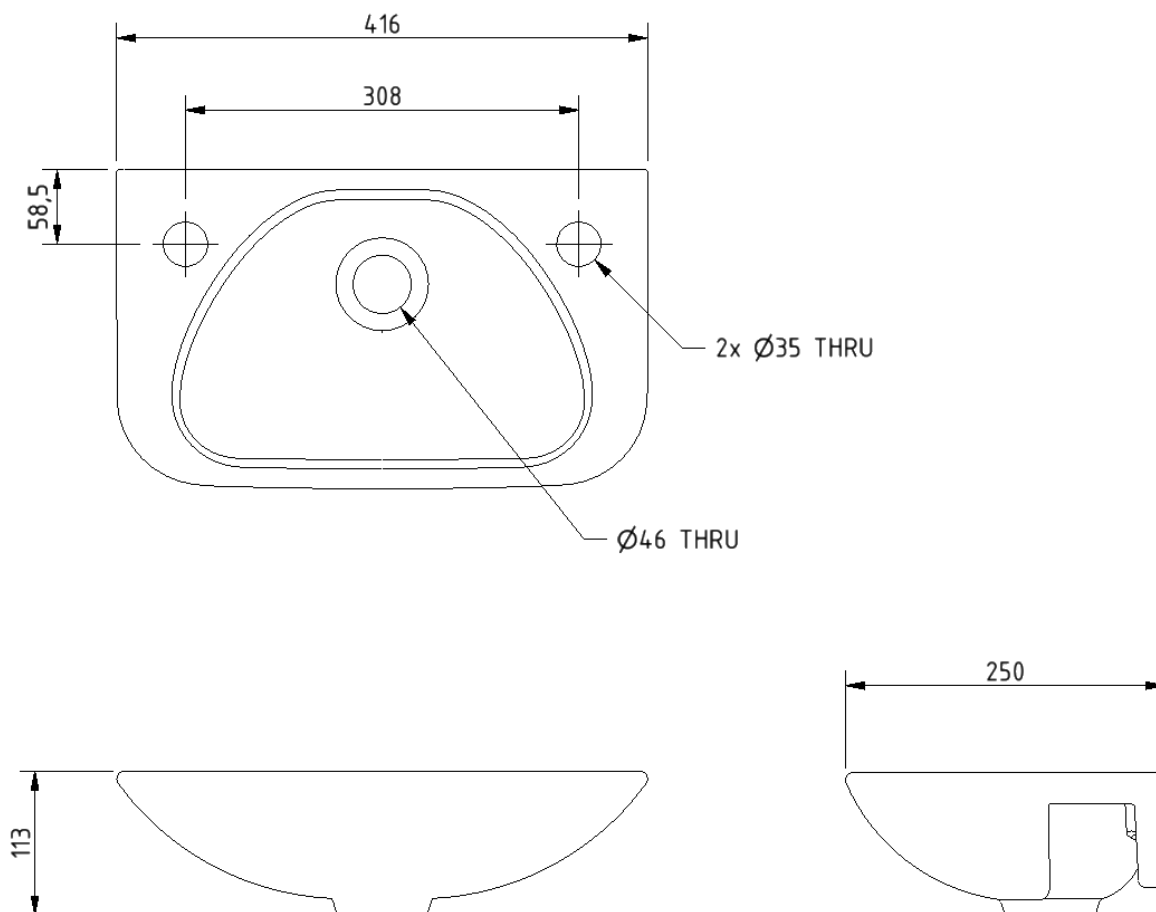
### Product description

Compact finger rinse Doc M basin, two tap holes, no overflow, white (RAL 9016)

### Product code

F20-BA01-CER-WH

Dimensions (mm)





## Ring only toilet seat



### Product details

**Warranty:** 2 years

**Max load:** N/A

**Doc M compliant:** Yes

**Suitable for wet areas:** Yes

### Features

- Complies with Part M of the Building Regulations
- Anti-bacterial, strong and durable seat
- Robust stainless steel bar hinge
- Ergonomic and comfortable shape
- Dedicated moulded buffers for best stability
- Fits pan NY01-PANCC02-WH (**Only compatible with this pan**)

### Finish options



**DB**  
Dark Blue (RAL 5011)



**DG**  
Dark Grey (RAL 7016)



**GY**  
Grey (RAL 7005)



**WH**  
White (RAL 9016)

### Product description

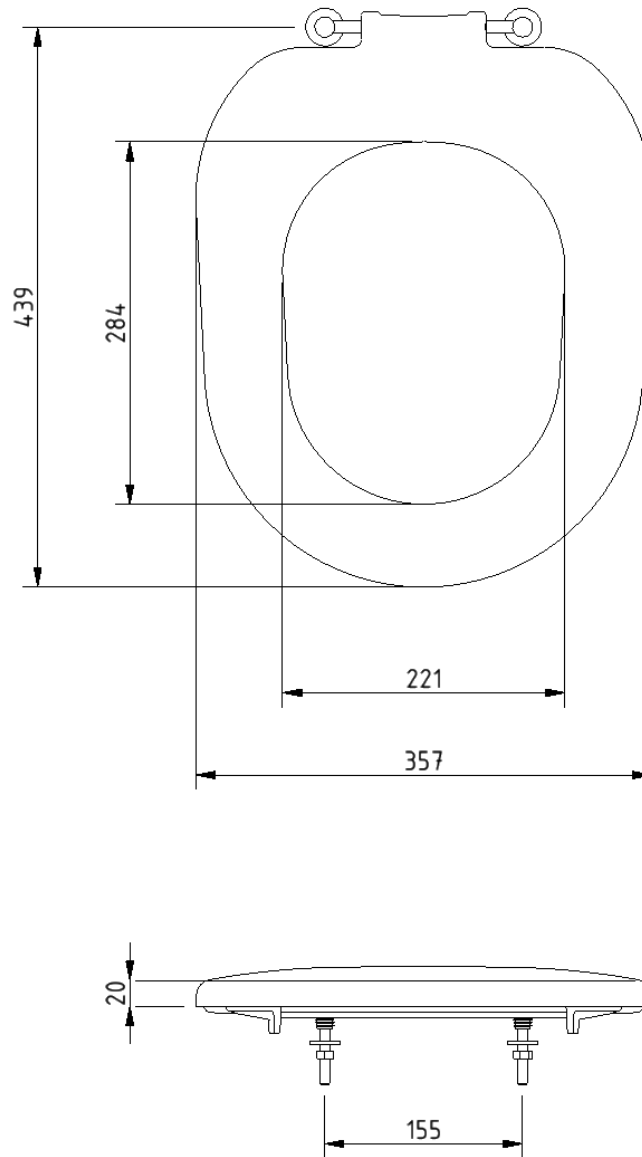
Toilet seat, ring only, stainless steel bar hinge

### Product code

NY01-SEAT03-\*\*

Replace \*\* with 2-character short code for chosen finish.  
e.g., NY01-SEAT03-DB

Dimensions (mm)



## Polished chrome sequential basin mixer tap



### Product details

<b>Warranty:</b>	2 years
<b>Max load:</b>	N/A
<b>Doc M compliant:</b>	Yes
<b>Suitable for wet areas:</b>	Yes
<b>Flexi tap tail connection (to tap body):</b>	M10 thread
<b>Flexi tap tail (onward connection):</b>	½ inch BSP

### Features

- Reg 4 certified (WRAS, NSF, Kiwa, etc.)
- Easy operation for users with limited dexterity
- Cold start

### Finish options



**CP**  
Polished Chrome

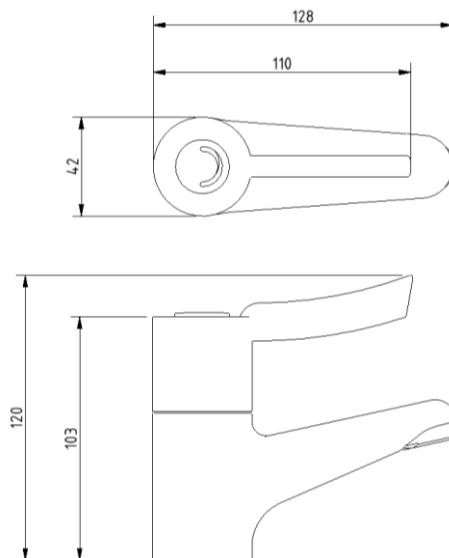
### Product description

Sequential basin mixer tap, polished chrome

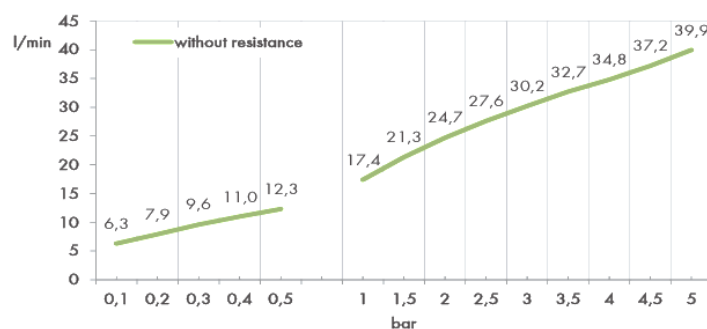
### Product code

BPLMON

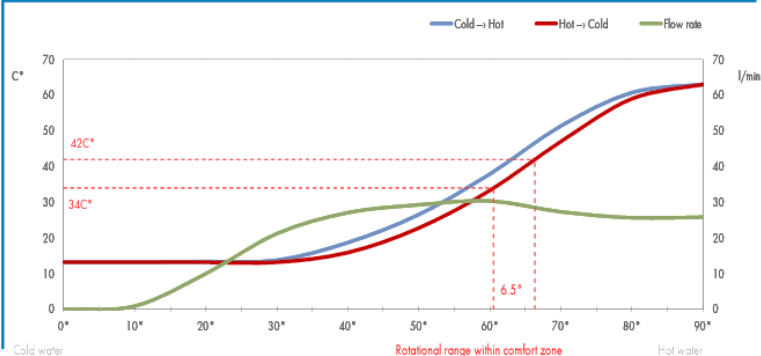
## Dimensions (mm)



## FLOW RATE CURVE



## FLOW RATE & HYSTERESIS CURVES



## Cistern fitting pack for close coupled rimless pan



### Product details

**Warranty:** 2 years

**Max load:** N/A

**Doc M compliant:** Yes

**Suitable for wet areas:** Yes

### Features

- Inlet valve and syphon Reg 4 Certified (WRAS, NSF, Kiwa, etc.)
- Can provide both full and half flush
- Doc M spatula lever to provide easy operation for users with limited dexterity
- 6 litre flush

### Product description

Cistern fitting pack for close coupled rimless pan, includes lever and basin waste

### Product code

SANCCPK-4

### Pack contents

- 1 x Inlet valve
- 1 x Syphon
- 1 x Doc M spatula lever
- 2 x Cistern blanking plugs
- 1 x Close coupled fixing bolts
- 1 x Tap hole stopper
- 1 x Basin waste

Need some product advice? Contact our team of product specialists

+44(0)1642 710 719 | [sales@fitzroyoflondon.com](mailto:sales@fitzroyoflondon.com)

[www.fitzroyoflondon.com](http://www.fitzroyoflondon.com)

DAT-SANCCPK-4 Doc Rev 1

Fitzroy of London may occasionally need to change specification of products and/or kit contents and reserves the right to do so.

## Stainless steel grab rail with concealed fixings, 35mm diameter tube



### Product details

<b>Warranty:</b>	5 Years
<b>Max load:</b>	185 kg
<b>Doc M compliant:</b>	Yes
<b>Suitable for wet areas:</b>	Yes

### Features

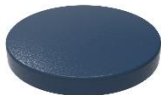
- Stainless steel construction
- Durable powder coated finish
- Concealed fixing

### Finish options

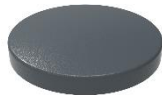
#### Powder coated



**WH**  
White (RAL 9016)



**DB**  
Dark Blue (RAL 5011)



**DG**  
Dark Grey (RAL 7016)



**GY**  
Grey (RAL 7005)

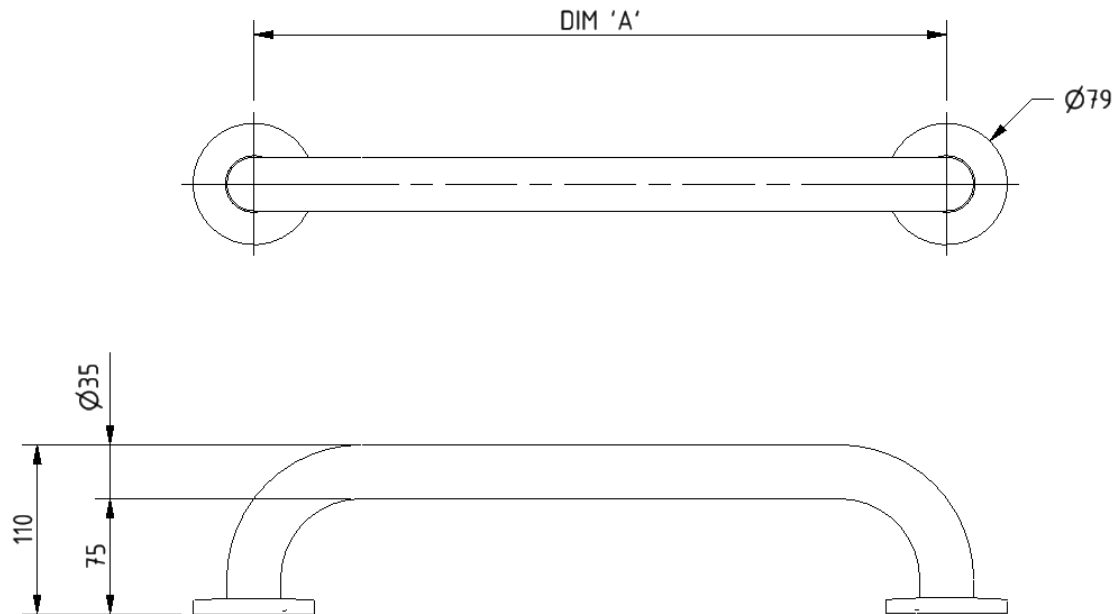
### Product description

### Product code

Grab rail, stainless steel, concealed fixings, 35mm diameter, 300mm	210130/**
Grab rail, stainless steel, concealed fixings, 35mm diameter, 450mm	210145/**
Grab rail, stainless steel, concealed fixings, 35mm diameter, 600mm	210160/**
Grab rail, stainless steel, concealed fixings, 35mm diameter, 900mm	210190/**

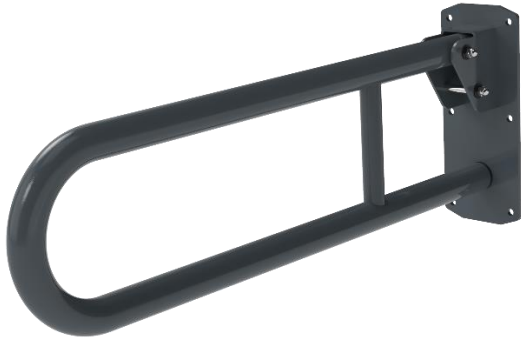
Replace \*\* with 2-character short code for chosen finish.  
e.g., 210130/WH

Dimensions (mm)



PRODUCT CODE	210130/**	210145/**	210160/**	210190/**
DIM 'A'	300	450	600	900

## Stainless steel lift and lock hinged support rail



### Product details

**Warranty:** 5 years

**Max load:** 135 kg

**Doc M compliant:** Yes (800mm only)

**Suitable for wet areas:** Yes

### Features

- Complies with Part M of the Building Regulations
- Lift and lock folding mechanism
- Non-corrosive stainless steel construction
- Toilet roll holder (optional)

### Finish options

#### Powder Coated



**DB**  
Dark Blue (RAL 5011)



**GY**  
Grey (RAL 7005)



**DG**  
Dark Grey (RAL 7016)



**WH**  
White (RAL 9016)

#### Mechanical



**SP**  
Polished Stainless Steel



**SS**  
Satin Stainless Steel

### Product description

### Product code

Hinged lift and lock support rail, stainless steel, 650mm

211865/\*\*

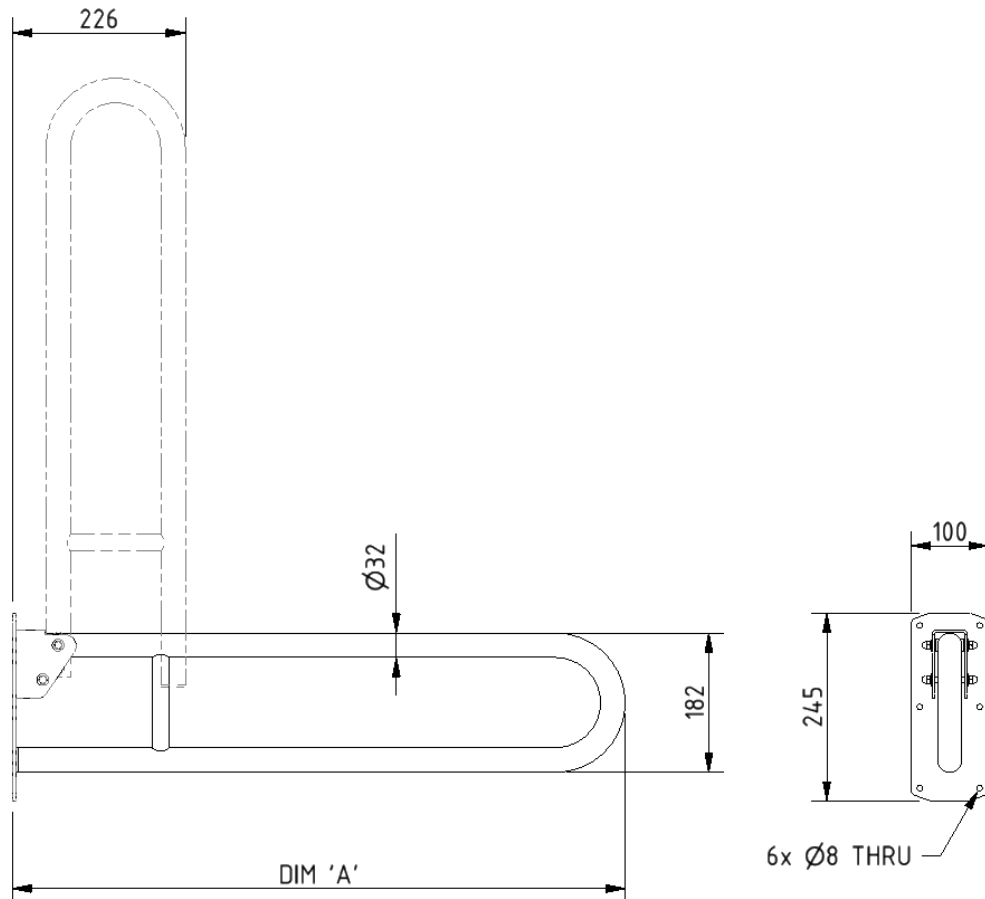
Hinged lift and lock support rail, stainless steel, 800mm

211880/\*\*

Replace \*\* with 2-character code for chosen finish (Powder Coated / Mechanical).  
e.g., 211865/DB



## Dimensions (mm)



PRODUCT CODE	211865/**	211880/**
DIM 'A'	650	800

## TMV3 inline thermostatic mixing valve



### Product details

**Warranty:** 2 years

**Max load:** N/A

**Doc M compliant:** Yes

**Suitable for wet areas:** Yes

### Features

- TMV3 approved & Reg 4 Certified (WRAS, NSF, Kiwa, etc.)
- Complies with Part M of the Building Regulations
- Building Regulations Part G compliant
- Highly resistant to scaling
- Anti-tamper proof head
- Complies with HTM04-01 D08
- TMV2 approved & complies with BS EN 1111 & BS EN 1287:2017
- Integral check valves & strainers

### Finish options



**CP**  
Polished Chrome

### Product description

TMV3 inline thermostatic mixing valve - 15mm

### Product code

BPLTMV

Dimensions (mm)

