

## Infrared premium rimless luxury wall hung Doc M toilet pack



### Product details

<b>Warranty:</b>	See individual products
<b>Max load:</b>	See individual products
<b>Doc M compliant:</b>	Yes
<b>Suitable for wet areas:</b>	Yes

### Features

- Premium rimless design
- Hygienic touch-free operation
- Complies with Part M of the Building Regulations
- Tap, flush valve and inlet valve Reg 4 Certified (WRAS, NSF, Kiwa, etc.)
- Concealed fixing stainless steel grab rails and hinged rail
- Simple one box solution

### Finish options

#### Mechanical



**SS**  
Satin Stainless Steel



**SP**  
Polished Stainless Steel

#### Powder Coated



**MB**  
Matt Black (RAL 9005)

### Product description

### Product code

Infrared premium rimless luxury wall hung Doc M toilet pack, left handed

NY03-DM-43111-**\*\***

Infrared premium rimless luxury wall hung Doc M toilet pack, right handed

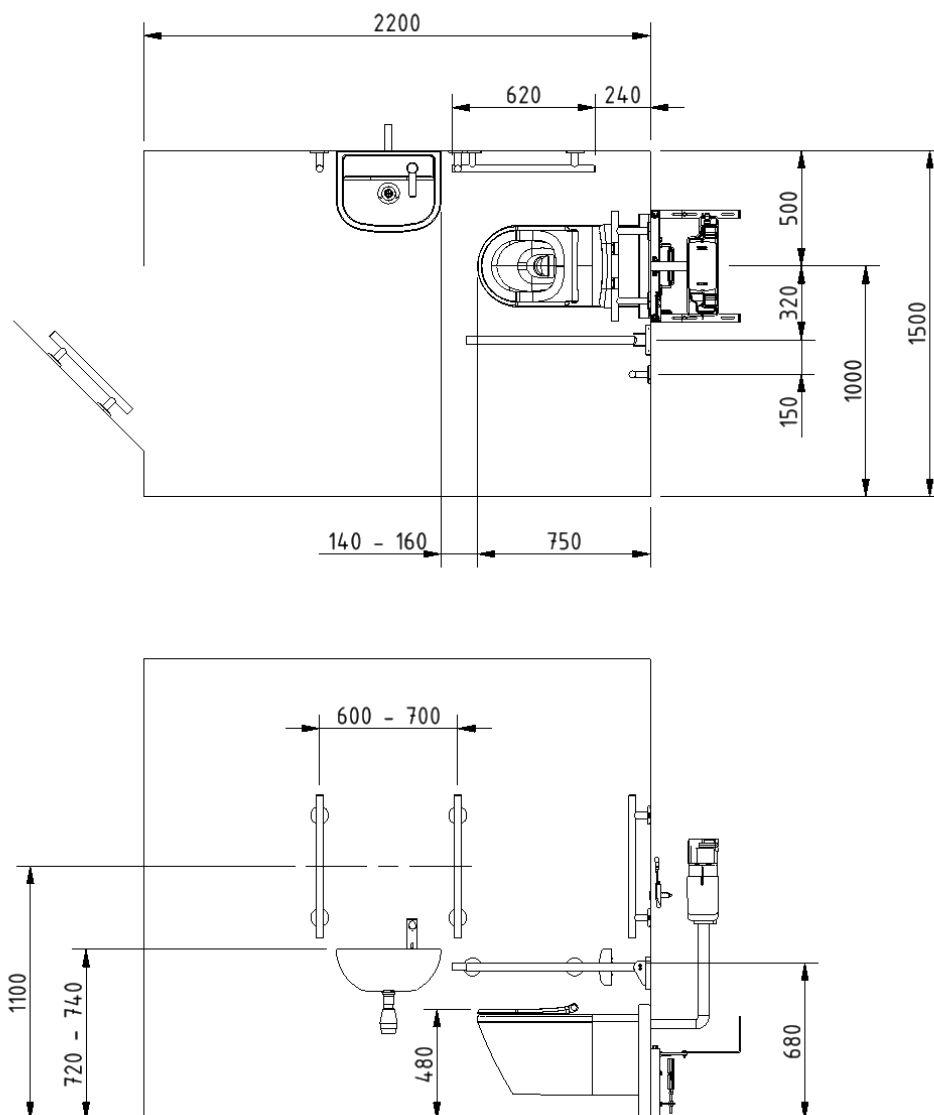
NY03-DM-43112-**\*\***

Replace **\*\*** with 2-character short code for chosen finish (Mechanical / Powder Coated).  
e.g., NY03-DM-43111-SS

### Pack contents

- 4 x 600mm stainless steel luxury grab rails with concealed fixings
- 1 x 450mm stainless steel luxury grab rail with concealed fixings
- 1 x 800mm stainless steel contemporary hinged support rail with concealed fixings
- 1 x 220mm stainless steel luxury back rest rail and pad with concealed fixings
- 1 x Wall hung premium rimless Doc M pan
- 1 x Floor mounting frame for wall hung pan
- 1 x Infrared concealed cistern with fittings, flush pipe, and mains powered sensor
- 1 x Ring only toilet seat with soft close hinge
- 1 x Left or right handed 1 tap hole basin
- 1 x Contemporary mains powered infrared tap
- 1 x TMV3 Valve
- 1 x Basin waste

### Dimensions (mm)



*Note: Spacing box between pan and wall is not provided by Fitzroy of London, this is required to achieve the 750mm pan projection.*

*Recommended to install wall hung frame up to the inside of the built out wall.*

## Premium rimless wall hung Doc M pan



### Product details

<b>Warranty:</b>	5 years
<b>Max load:</b>	N/A
<b>Doc M compliant:</b>	Yes
<b>Suitable for wet areas:</b>	Yes

### Features

- Rimless design for ease of cleaning
- Extended projection to aid compliance with Part M of the Building Regulations
- UKCA and CE compliant

For 750mm projection, wall should be built out by 50mm

### Finish options



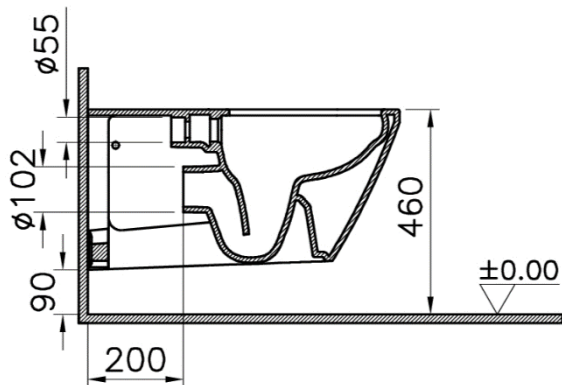
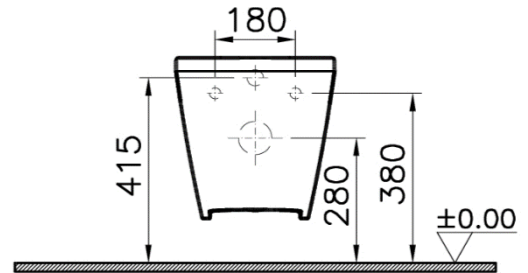
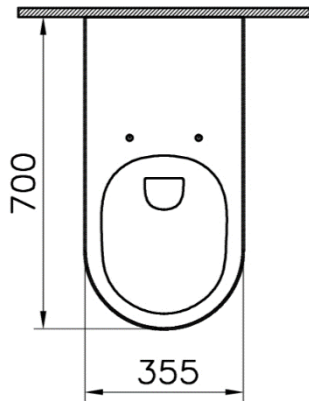
### Product description

Premium rimless wall hung Doc M pan

### Product code

NY03-SW-43000-WH

Dimensions (mm)



## Low frame unit for wall hung pan



### Product details

**Warranty:** 5 years

**Max load:** 400 kg

**Doc M compliant:** Yes

**Suitable for wet areas:** Yes

### Features

- Comes with flush pipe and WC pan connector clamps
- Adjustable legs for WC pan height fixing flexibility
- Wall and floor fixing brackets can be fixed through 180 degrees and 360 degrees to simplify installation
- Strong steel square hollow construction
- Load tested to 4kN for compliance with BS EN 997

### Finish options

- As standard:**
- Blue powder coated
  - Zinc plated wall and floor brackets

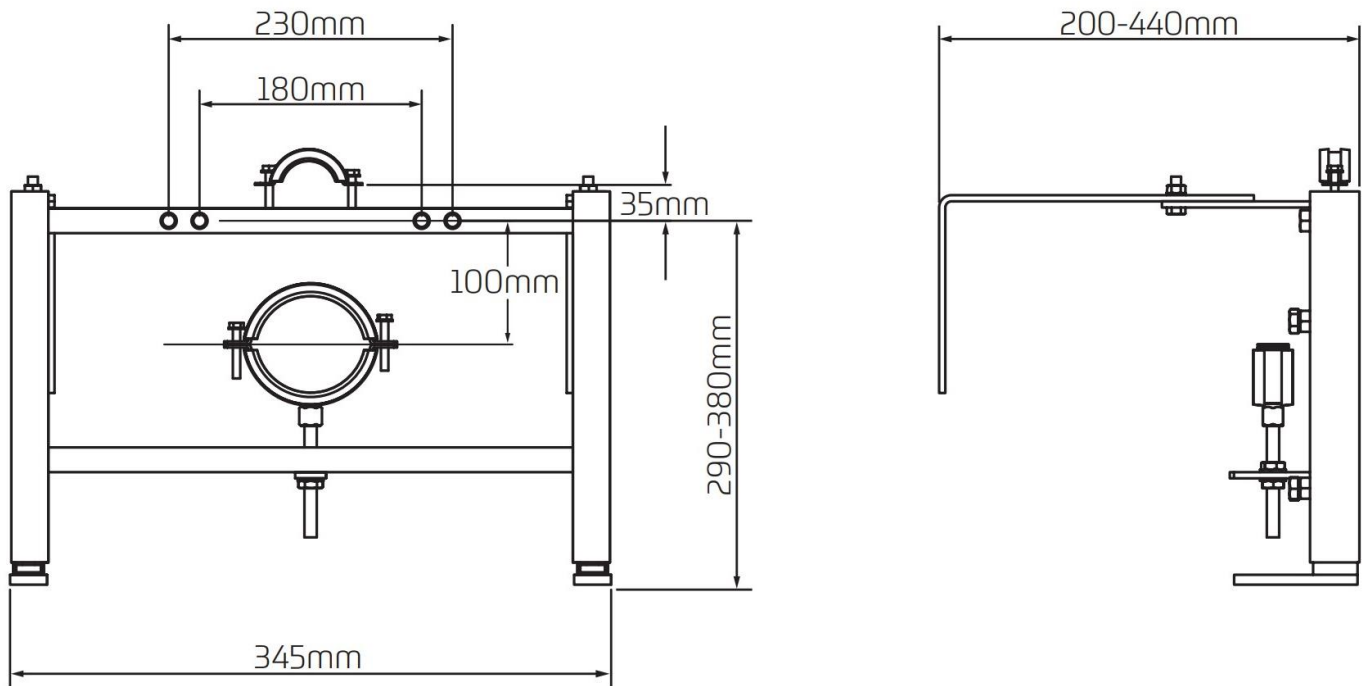
### Product description

Low frame unit for wall hung pan

### Product code

B-WALLHUNGFRAME

**Dimensions (mm)**



\*For distances between 160-200mm the brackets will need to be reduced in length by cutting.

Soft close ring only toilet seat



Product details

**Warranty:** 5 years

**Max load:** N/A

**Doc M compliant:** Yes

**Suitable for wet areas:** Yes

Features

- Complies with Part M of the Building Regulations
- Fits premium rimless wall hung pan
- Soft close hinge

Finish options



WH  
White (RAL 9016)

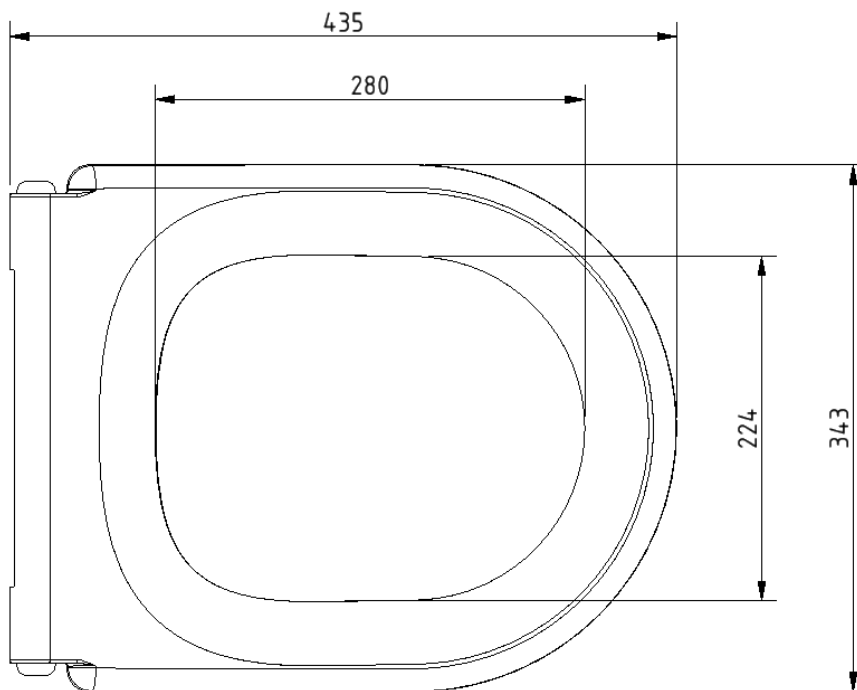
Product description

Toilet seat, ring only, soft close, with hinge, white (RAL 9016)

Product code

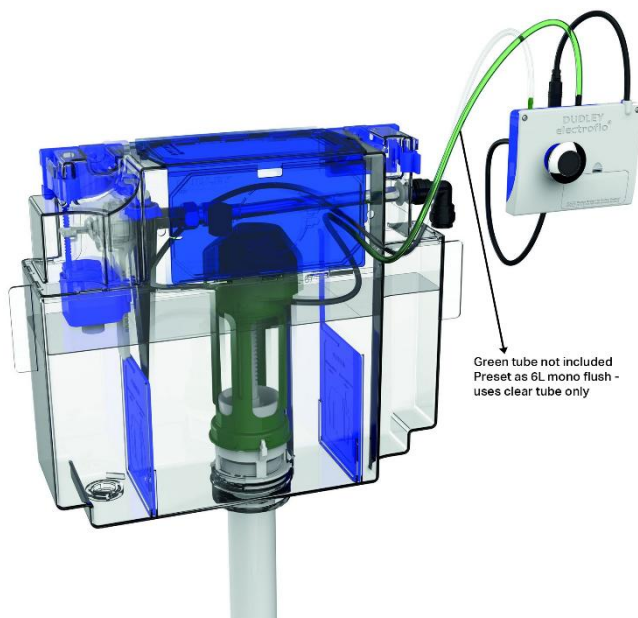
NY03-SEAT01-WH

Dimensions (mm)





## Infrared concealed cistern and fittings



### Product details

<b>Warranty:</b>	5 years
<b>Max load:</b>	N/A
<b>Doc M compliant:</b>	Yes
<b>Suitable for wet areas:</b>	Yes

### Features

- Flush valve and inlet valve Reg 4 Certified (WRAS, NSF, Kiwa, etc.)
- Supplied assembled for quick and easy installation
- Discreet Ø40mm IR sensor
- Sensor can be installed up to 250mm from cistern
- LED flush indication
- Front and top access panels
- Internal overflow warning
- Supports BREEAM.
- 6 litre mono flush
- Side inlet

### Finish options

#### Electroplated



**CP**  
Polished Chrome

#### Mechanical



**SS**  
Satin Stainless Steel

#### Powder Coated



**MB**  
Matt Black (RAL 9005)

### Product description

### Product code

Infrared concealed cistern, with fittings and sensor, mains powered

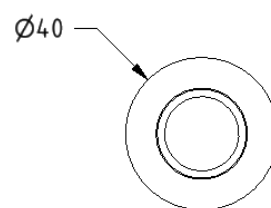
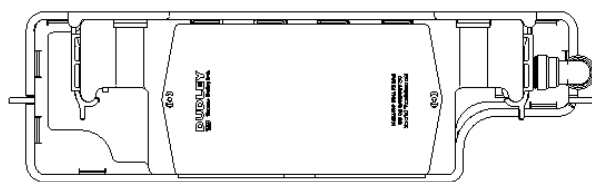
NY03-CISTIR01-\*\*

Replace \*\* with 2-character short code for chosen finish (Mechanical / Electroplated / Powder Coated).  
e.g., NY03-CISTIR01-CP

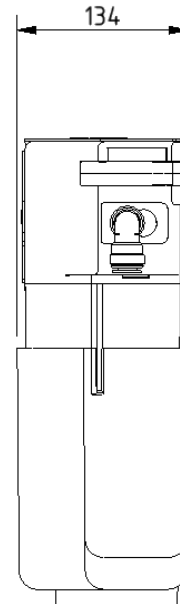
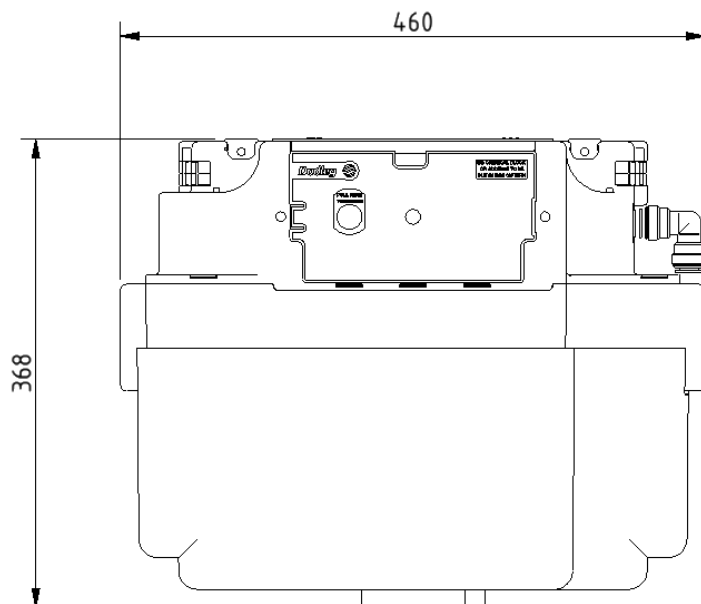
## Specification

<b>Operating voltage:</b>	6V DC
<b>Mains supply:</b>	230V AC 50Hz
<b>Sensor cable length:</b>	400mm
<b>Sensor activation range:</b>	Up to 50mm
<b>Ingress protection:</b>	IP44
<b>Maximum wall thickness:</b>	Up to 45mm

## Dimensions (mm)



**SENSOR**  
SCALE 1 : 2



## Premium Doc M basin



### Product details

<b>Warranty:</b>	Lifetime
<b>Max load:</b>	N/A
<b>Doc M compliant:</b>	Yes
<b>Suitable for wet areas:</b>	Yes

### Features

- Multiple tap hole configurations available removing the need for blanking caps
- Complies with Part M of the Building Regulations
- No overflow

Does **NOT** come with wall fixings (P-000247-X00X)

## Finish options



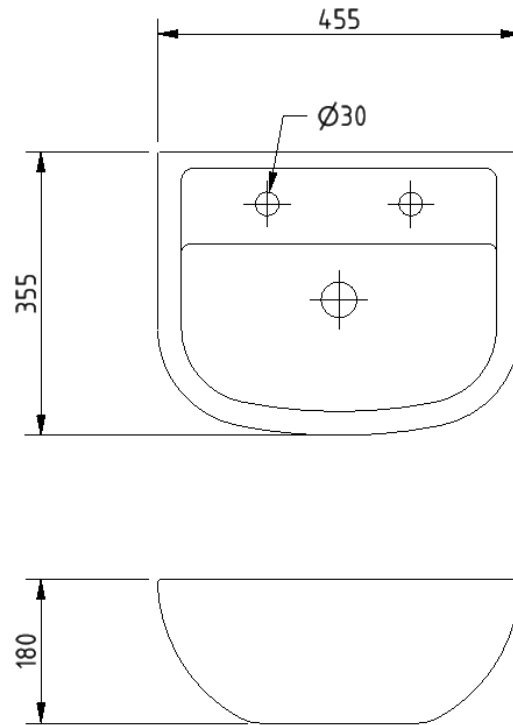
**WH**  
White

## Product description

## Product code

Premium Doc M basin, two tap holes, no overflow, white	NY02-SW-00100-WH
Premium Doc M basin, left handed tap hole, no overflow, white	NY02-SW-00101-WH
Premium Doc M basin, right handed tap hole, no overflow, white	NY02-SW-00102-WH
Premium Doc M basin, central tap hole, no overflow, white	NY02-SW-00103-WH

**Dimensions (mm)**



FOR TAP HOLE POSITION DIMENSIONS SEE PRODUCT SPECIFIC MARKETING DRAWING

## Premium basin fixing kit



### Product details

**Warranty:** 5 years

**Max load:** N/A

**Doc M compliant:** N/A

**Suitable for wet areas:** Yes

### Features

- Heavy duty basin fixing
- For use with premium Doc M basin (NY02-SW-0010x-WH)

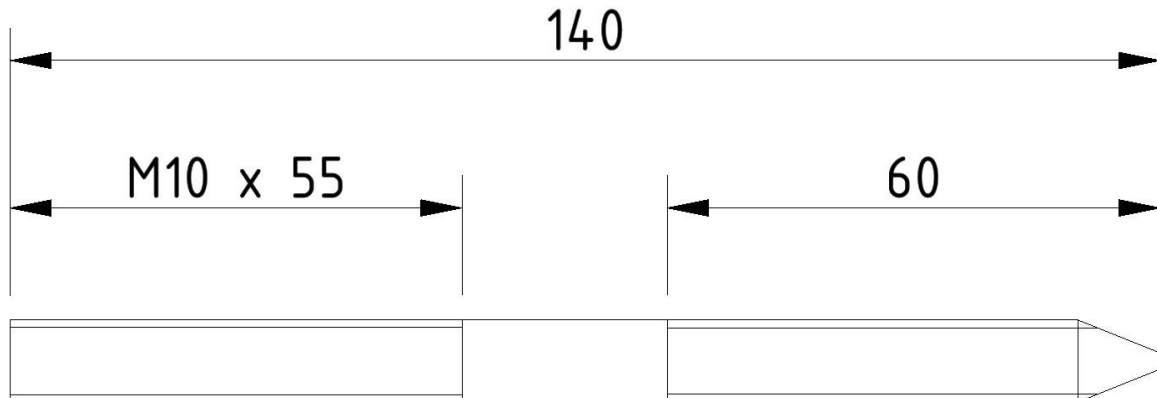
### Product description

Premium basin fixing kit, M10 x 140mm

### Product code

P-000247-X00X

### Dimensions (mm)



Need some product advice? Contact our team of product specialists  
+44(0)1642 710 719 | [sales@fitzroyoflondon.com](mailto:sales@fitzroyoflondon.com)

[www.fitzroyoflondon.com](http://www.fitzroyoflondon.com)

DAT-P-000247 Doc Rev 1

Fitzroy of London may occasionally need to change specification of products and/or kit contents and reserves the right to do so.  
We strive to keep our documentation up to date; however, we cannot guarantee this. We accept no liability for any information given on this data sheet.

## Basin waste with stainless steel grid



### Product details

**Warranty:** 2 years

**Max load:** N/A

**Doc M compliant:** Yes

**Suitable for wet areas:** Yes

### Features

- Slotted type for use with basins without overflow
- Manufactured from high quality materials
- Quick and simple installation

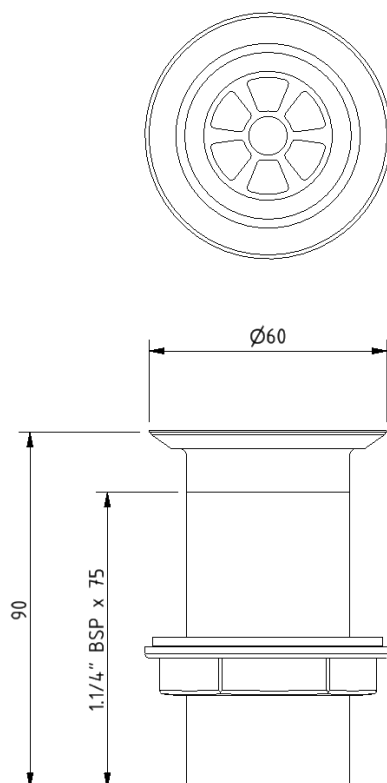
### Product description

Basin waste, plastic body, white, stainless grid, unslotted, 1-1/4" BSP thread

### Product code

P-000245-X00X

### Dimensions (mm)



Fitzroy of London may occasionally need to change specification of products and/or kit contents and reserves the right to do so. We strive to keep our documentation up to date; however, we cannot guarantee this. We accept no liability for any information given on this data sheet.

Need some product advice? Contact our team of product specialists  
+44(0)1642 710 719 | [sales@fitzroyoflondon.com](mailto:sales@fitzroyoflondon.com)  
[www.fitzroyoflondon.com](http://www.fitzroyoflondon.com)

## Contemporary mains powered infrared tap



### Product details

<b>Warranty:</b>	5 years
<b>Max load:</b>	N/A
<b>Doc M compliant:</b>	Yes
<b>Suitable for wet areas:</b>	Yes

### Features

- Complies with Part M of the Building Regulations
- Reg 4 Certified (WRAS, NSF, Kiwa, etc.)
- Must be installed with a thermostatic mixing valve for premixed water (part code: BPLTMV)
- Hygienic touch-free operation
- Shuts off when hand is removed from in front of the sensor
- Water delivery automatically stops after 90 seconds (can be adjusted)

### Finish options

#### Electroplated



**CP**  
Polished Chrome

#### Mechanical



**SS**  
Satin Stainless Steel

#### Powder Coated



**MB**  
Matt Black (RAL 9005)

### Product description

Contemporary infrared tap, with fittings, mains powered

### Product code

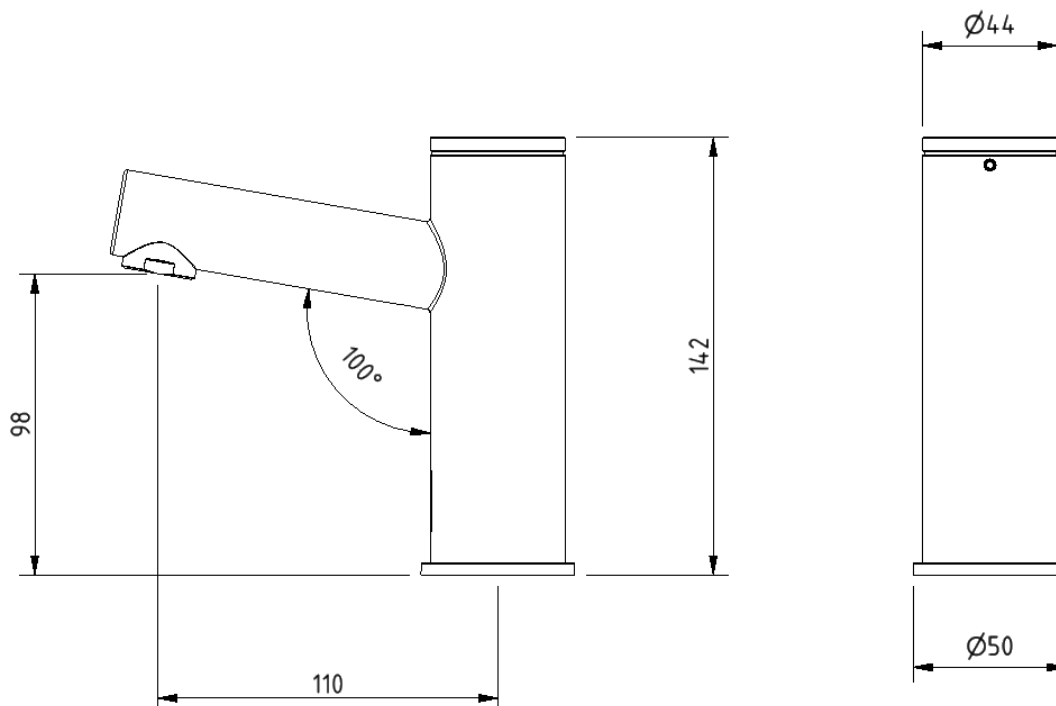
NY03-TAPIR01-\*\*

Replace \*\* with 2-character short code for chosen finish.  
e.g., NY03-TAPIR01-CP

## Specification

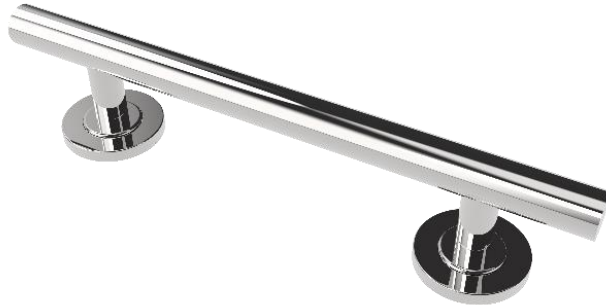
Operating voltage:	9V DC
Mains supply:	230V AC 50Hz
Maximum dynamic pressure:	0.5 bar MIN, 8 bar MAX
Maximum hot water supply temperature:	70 degrees Celsius
Sensor range:	80 - 300mm (220mm preset)
Connection:	½" BSP
Flow rate:	6 litre per minute

## Dimensions (mm)





## Luxury straight stainless steel concealed fixing grab rail



### Product details

<b>Warranty:</b>	5 Years
<b>Max load:</b>	150 kg
<b>Doc M compliant:</b>	Yes
<b>Suitable for wet areas:</b>	Yes

### Features

- High quality stainless steel construction
- Concealed fixing grab rails
- Complies with Doc M of the Building Regulations
- Stylish 'T-Bar' design

## Finish options

### Mechanical



**SS**  
Satin Stainless Steel



**SP**  
Polished Stainless Steel

### Powder Coated



**MB**  
Matt Black (RAL 9005)

## Product description

## Product code

Luxury straight, stainless steel concealed fixing grab rail, 300mm

F22-0300-LSC-\*\*

Luxury straight, stainless steel concealed fixing grab rail, 450mm

F22-0450-LSC-\*\*

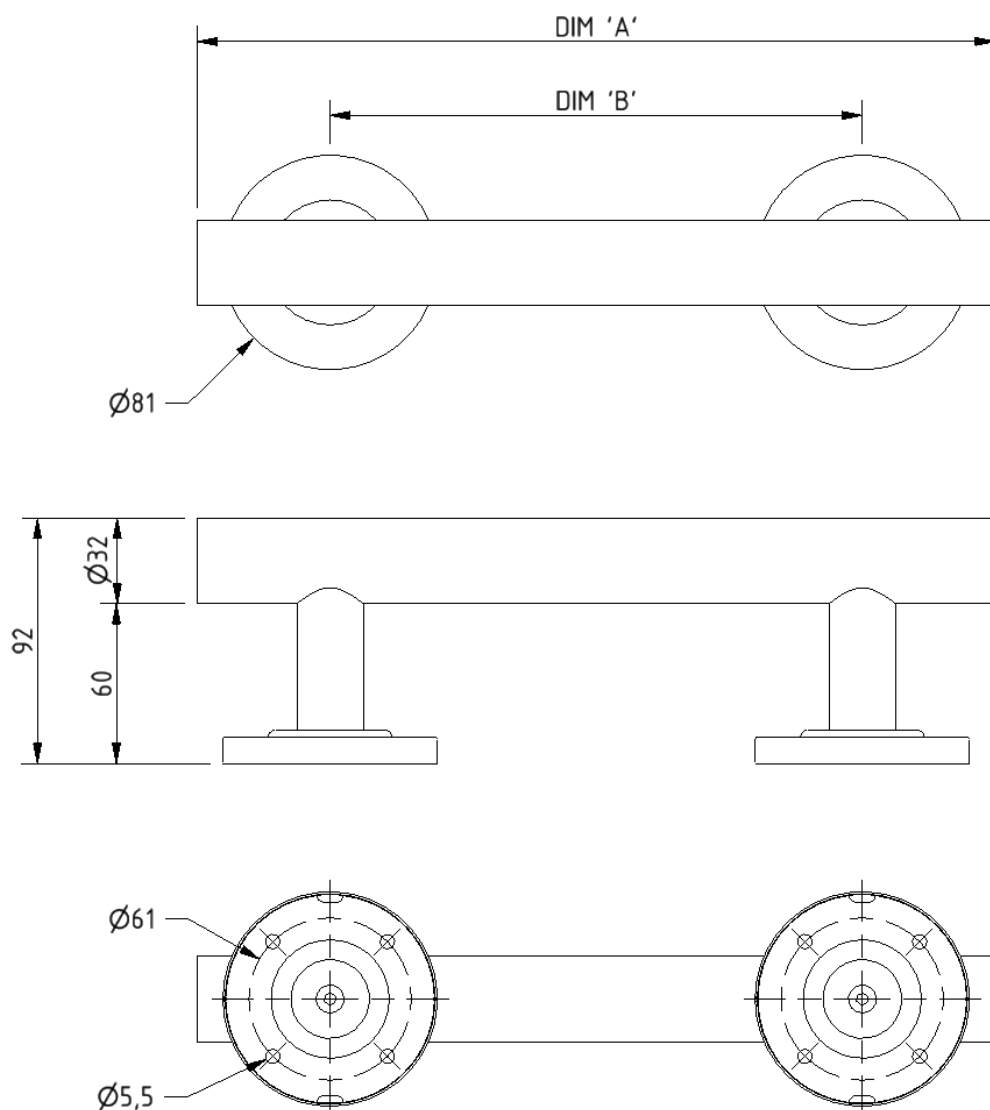
Luxury straight, stainless steel concealed fixing grab rail, 600mm

F22-0600-LSC-\*\*

Luxury straight, stainless steel concealed fixing grab rail, 900mm

F22-0900-LSC-\*\*

Replace \*\* with 2-character short code for chosen finish (Mechanical / Powder Coated).  
e.g., F22-0300-LSC-SS

**Dimensions (mm)**


PRODUCT CODE	F22-0300-LSC	F22-0450-LSC	F22-0600-LSC	F22-0900-LSC
DIM 'A'	300	450	600	900
DIM 'B'	200	300	450	750

## Luxury stainless steel back rest rail and pad with concealed fixings



### Product details

<b>Warranty:</b>	5 years
<b>Max load:</b>	N/A
<b>Doc M compliant:</b>	Yes
<b>Suitable for wet areas:</b>	Yes

### Features

- Durable wipe clean polyurethane pad
- Non-corrosive stainless steel construction
- Saddle clips for fixing pad to rail
- Complies with Part M of the Building Regulations
- Stylish T-Bar design

### Finish options

#### Mechanical



**SS**  
Satin Stainless Steel



**SP**  
Polished Stainless Steel

#### Powder coated



**MB**  
Matt Black (RAL 9005)

### Product description

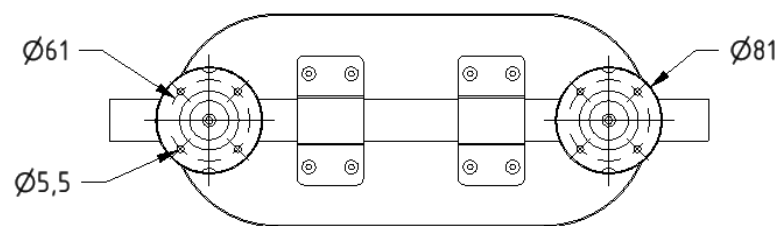
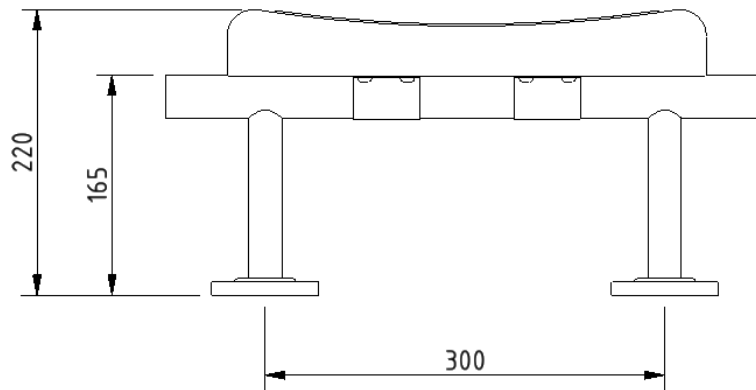
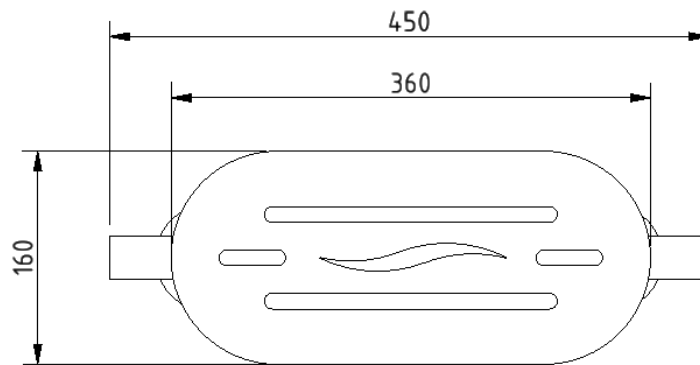
Luxury back rest rail, including pad, stainless steel, concealed fixings, overall projection 220mm

### Product code

F22-B220-LSC-\*\*

Replace \*\* with 2-character short code for chosen finish (Mechanical / Powder Coated).  
e.g., F22-B220-LSC-SS

Dimensions (mm)



## Contemporary single arm stainless steel friction hinged rail with concealed fixings



### Product details

**Warranty:** 5 years

**Max load:** 90 kg

**Doc M compliant:** Yes

**Suitable for wet areas:** Yes

### Features

- Contemporary single arm design
- Premium friction folding mechanism
- High quality stainless steel construction
- Complies with Part M of the Building Regulations

### Finish options

#### Mechanical



**SP**

Polished Stainless Steel



**SS**

Satin Stainless Steel

#### Powder Coated



**MB**

Matt Black (RAL 9005)

### Product description

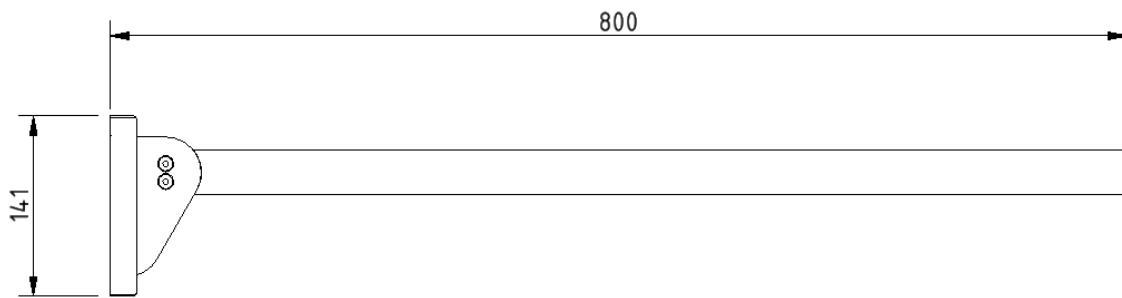
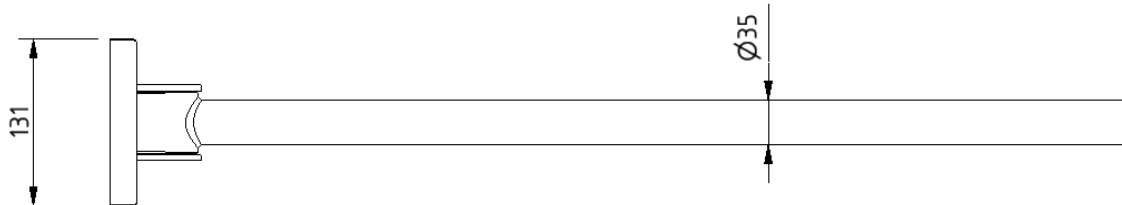
Contemporary single arm friction rail, stainless steel, concealed fixings

### Product code

310480C/\*\*

Replace \*\* with 2-character short code for chosen finish (Mechanical / Powder Coated).  
e.g., 310480C/SP

Dimensions (mm)



## TMV3 inline thermostatic mixing valve



### Product details

**Warranty:** 2 years

**Max load:** N/A

**Doc M compliant:** Yes

**Suitable for wet areas:** Yes

### Features

- TMV3 approved & Reg 4 Certified (WRAS, NSF, Kiwa, etc.)
- Complies with Part M of the Building Regulations
- Building Regulations Part G compliant
- Highly resistant to scaling
- Anti-tamper proof head
- Complies with HTM04-01 D08
- TMV2 approved & complies with BS EN 1111 & BS EN 1287:2017
- Integral check valves & strainers

### Finish options



**CP**  
Polished Chrome

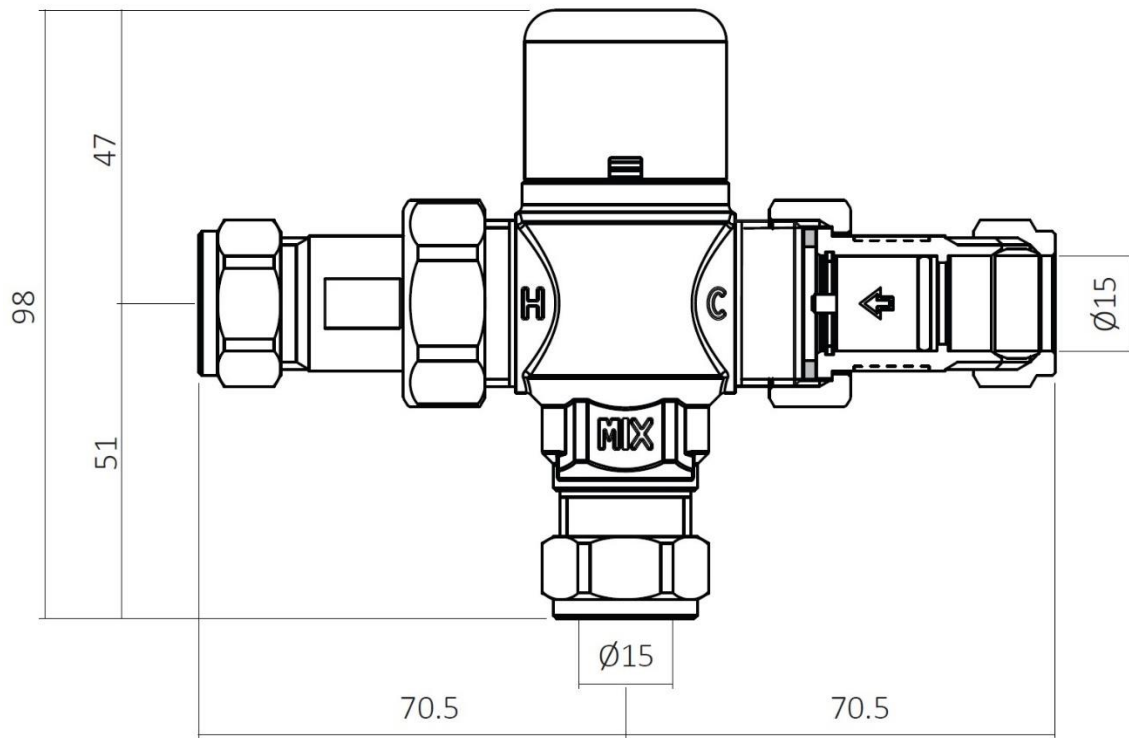
### Product description

TMV3 inline thermostatic mixing valve - 15mm

### Product code

BPLTMV

Dimensions (mm)



Fitzroy of London may occasionally need to change specification of products and/or kit contents and reserves the right to do so. We strive to keep our documentation up to date; however, we cannot guarantee this. We accept no liability for any information given on this data sheet.