

Luxury wall hung Doc M toilet pack



Product details

Warranty:	See individual products
Max load:	See individual products
Doc M compliant:	Yes
Suitable for wet areas:	Yes

Features

- Complies with Part M of the Building Regulations
- Inlet valve and syphon Reg 4 Certified (WRAS, NSF, Kiwa, etc.)
- Concealed fixing stainless steel grab rails
- Universal - suitable for left or right-handed transfer
- Simple one box solution
- Optional TMV3 Valve

Finish options

Mechanical



SP
Polished Stainless Steel



SS
Satin Stainless Steel

Powder Coated



MB
Matt Black (RAL 9005)

Product description

Luxury wall hung Doc M toilet pack

Luxury back to wall Doc M toilet pack, TMV3 valve

Luxury back to wall Doc M toilet pack, TMV3 tap

Product code

NY03-DM-41000-**

NY03-DM-41100-**

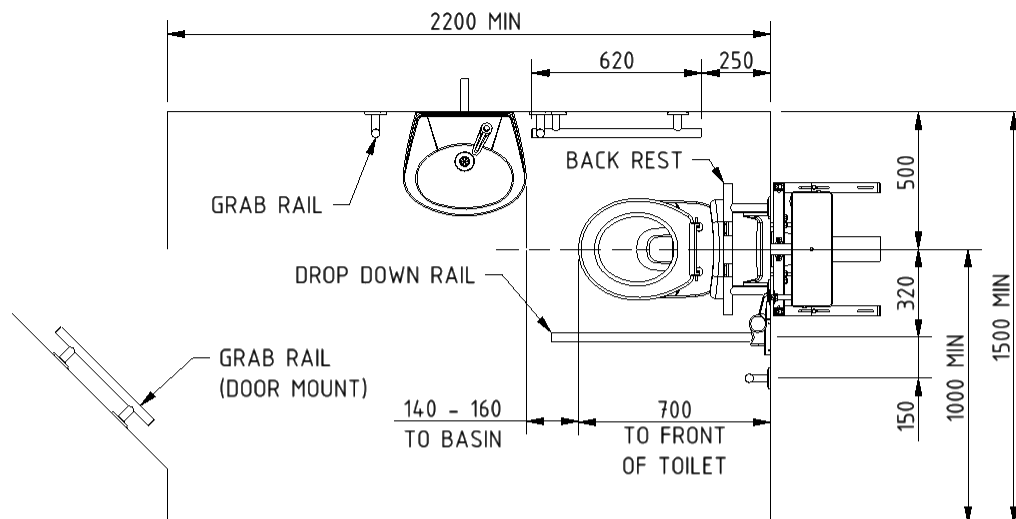
NY03-DM-41200-**

Replace ** with 2-character short code for chosen finish (Mechanical / Powder Coated)
e.g., NY03-DM-41000-SP

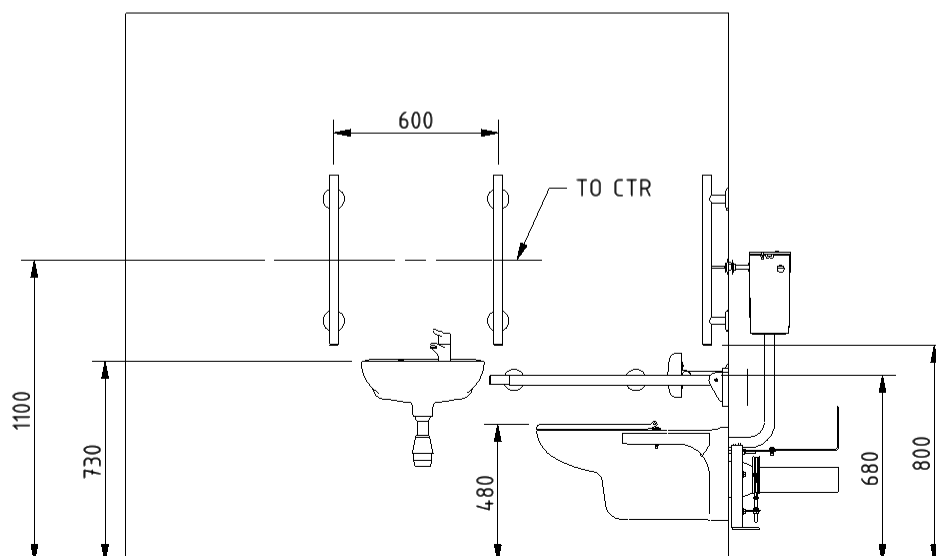
Pack contents

- 4 x 600mm stainless steel luxury grab rails with concealed fixings
- 1 x 450mm stainless steel luxury grab rail with concealed fixings
- 1 x 800mm stainless steel contemporary hinged support rail with concealed fixings
- 1 x 220mm stainless steel luxury back rest rail and pad with concealed fixings
- 1 x Wall hung box rim Doc M pan
- 1 x Floor mounting frame for wall hung pan
- 1 x Concealed cistern with fittings, flush pipe, and Doc M concealed cistern spatula lever
- 1 x Ring only toilet seat
- 1 x Two tap hole basin
- 1 x Sequential basin mixer tap (optional TMV3 tap - NY03-DM-41200 only)
- 1 x Tap hole stopper
- 1 x Basin waste
- 1 x TMV3 Valve (NY03-DM-41100 only)

Dimensions (mm)



TO ACHIEVE A 750mm PROJECTION, THE WALL BEHIND THE PAN SHOULD BE BUILT OUT BY 50mm



Wall hung Doc M pan



Product details

Warranty:	5 years
Max load:	N/A
Doc M compliant:	No
Suitable for wet areas:	Yes

Features

- Extended projection to aid compliance with Part M of the Building Regulations
- UKCA and CE compliant
- Contemporary feel
- Box rim ran

For 750mm projection, wall should be built out by 50mm

Finish options



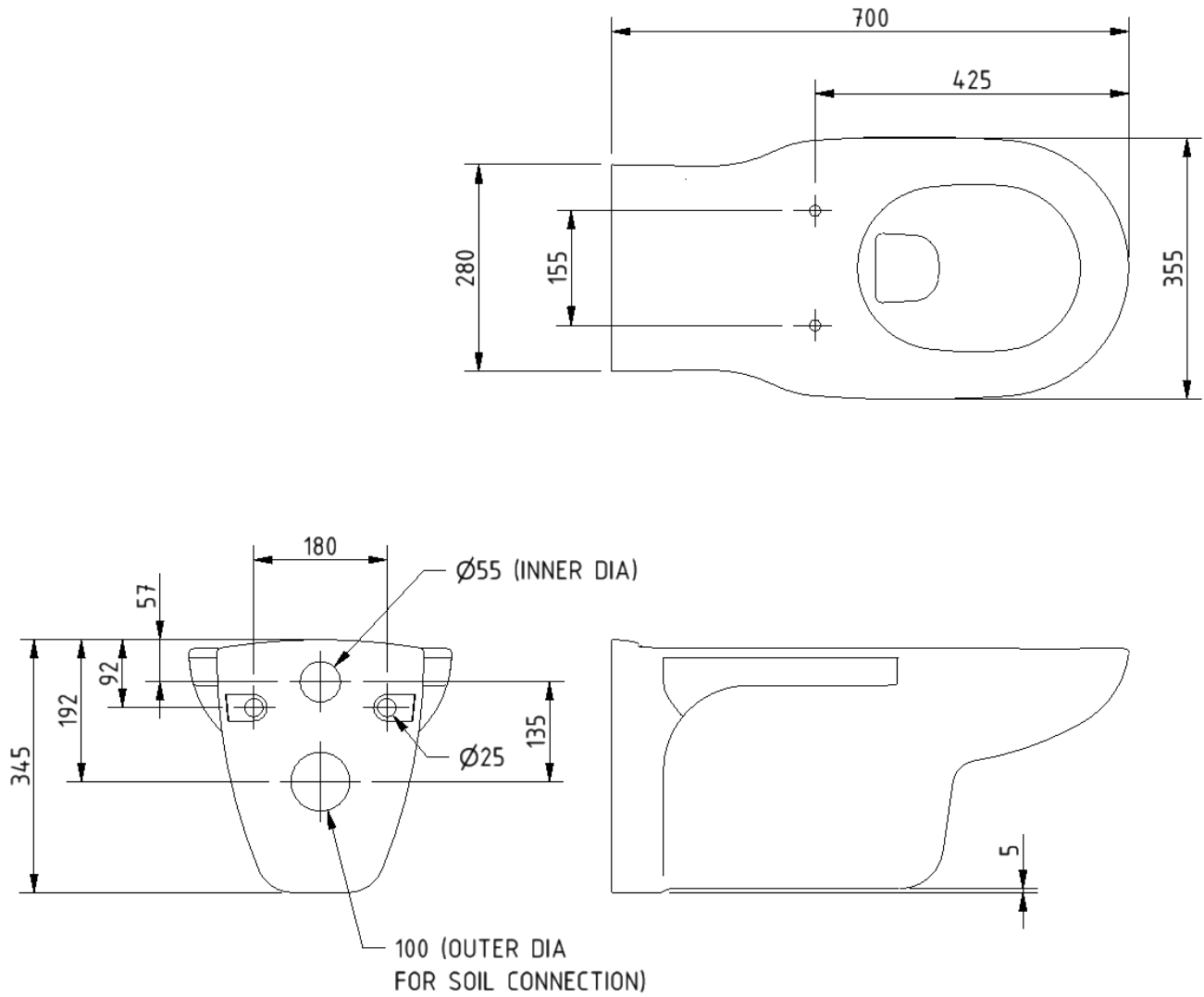
Product description

Wall hung Doc M pan, 700mm projection, no fixings, white

Product code

PANWH70

Dimensions (mm)



Low frame unit for wall hung pan



Product details

Warranty: 5 years

Max load: 400 kg

Doc M compliant: Yes

Suitable for wet areas: Yes

Features

- Comes with flush pipe and WC pan connector clamps
- Adjustable legs for WC pan height fixing flexibility
- Wall and floor fixing brackets can be fixed through 180 degrees and 360 degrees to simplify installation
- Strong steel square hollow construction
- Load tested to 4kN for compliance with BS EN 997

Finish options

- As standard:**
- Blue powder coated
 - Zinc plated wall and floor brackets

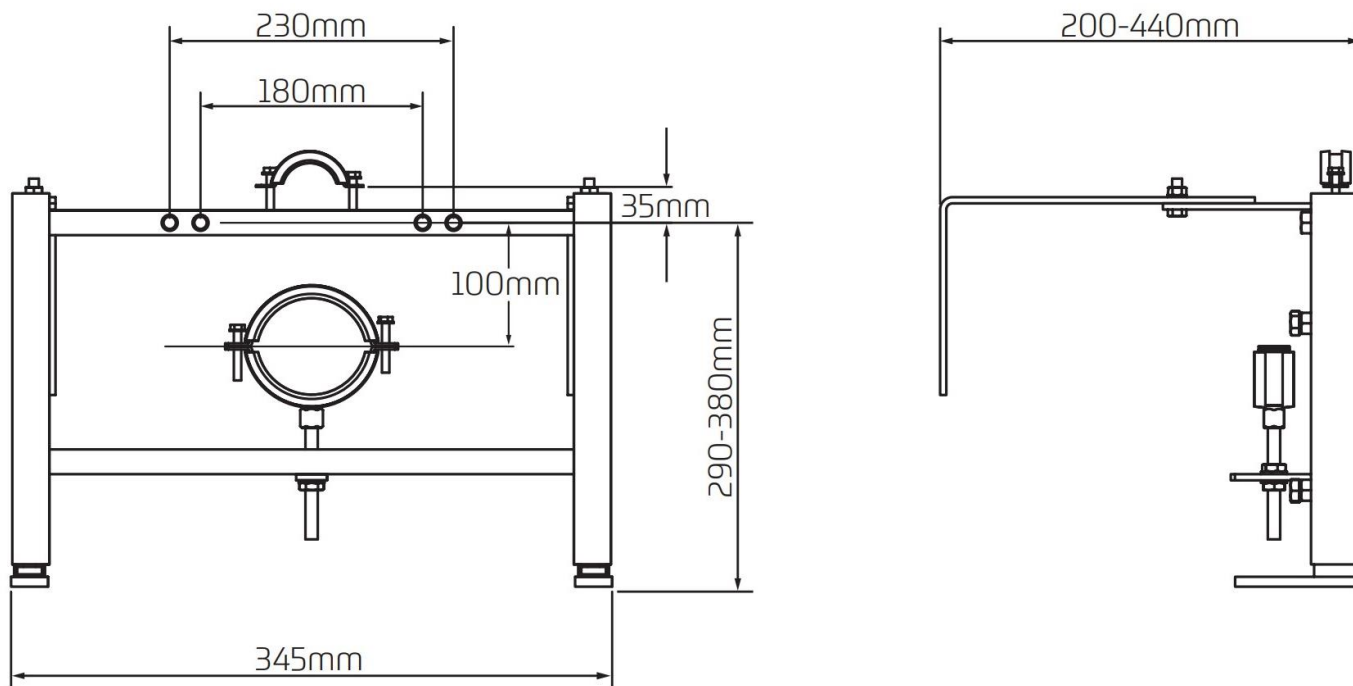
Product description

Low frame unit for wall hung pan

Product code

B-WALLHUNGFRAME

Dimensions (mm)



*For distances between 160-200mm the brackets will need to be reduced in length by cutting.

Concealed cistern and fittings



Product details

Warranty: 2 years

Max load: N/A

Doc M compliant: N/A

Suitable for wet areas: Yes

Features

- Syphon and inlet valve Reg 4 Certified (WRAS, NSF, Kiwa, etc.)
- Top access
- 6 litre flush
- Internal / external overflow warning
- High density polystyrene construction

Does not come with flush lever or flush pipe

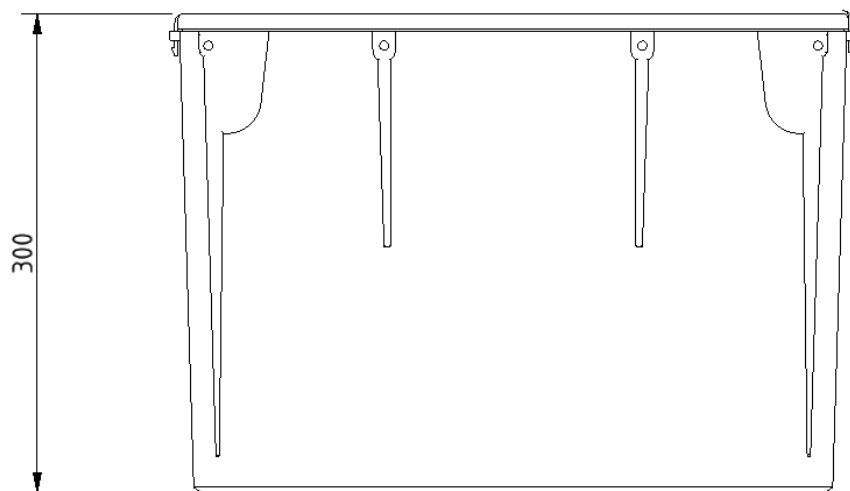
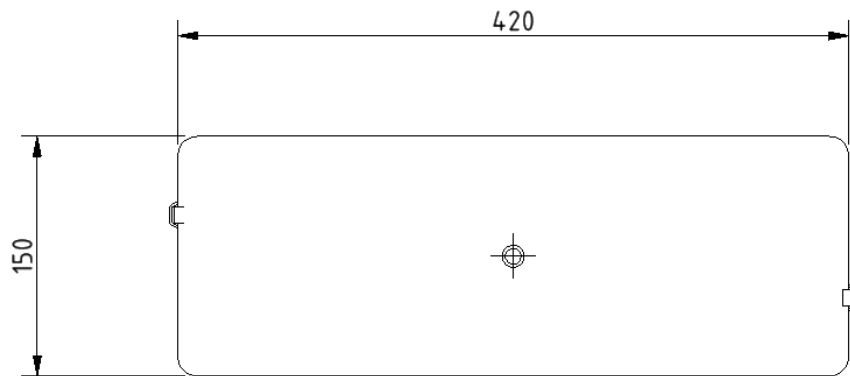
Product description

Concealed cistern and fittings, no lever or flush pipe

Product code

B-CISTHIDE

Dimensions (mm)



Toilet seat, ring only, stainless steel pillar hinge



Product details

Warranty: 2 years

Max load: 150 kg

Doc M compliant: Yes

Suitable for wet areas: Yes

Features

- Complies with Part M of the Building Regulations
- Anti-bacterial, strong and durable Duroplast seat
- Ergonomic and comfortable shape
- Stainless steel hinge (bottom fix as standard)
Additional hinge pack to convert to top fix: NY-TOPFIXHINGE
- Adjustable locating buffers
- Fits close coupled, low level, back to wall and wall hung pans

Finish options



DB
Dark Blue (RAL 5011)



DG
Dark Grey (RAL 7016)



GY
Grey (RAL 7005)



WH
White (RAL 9016)

Product description

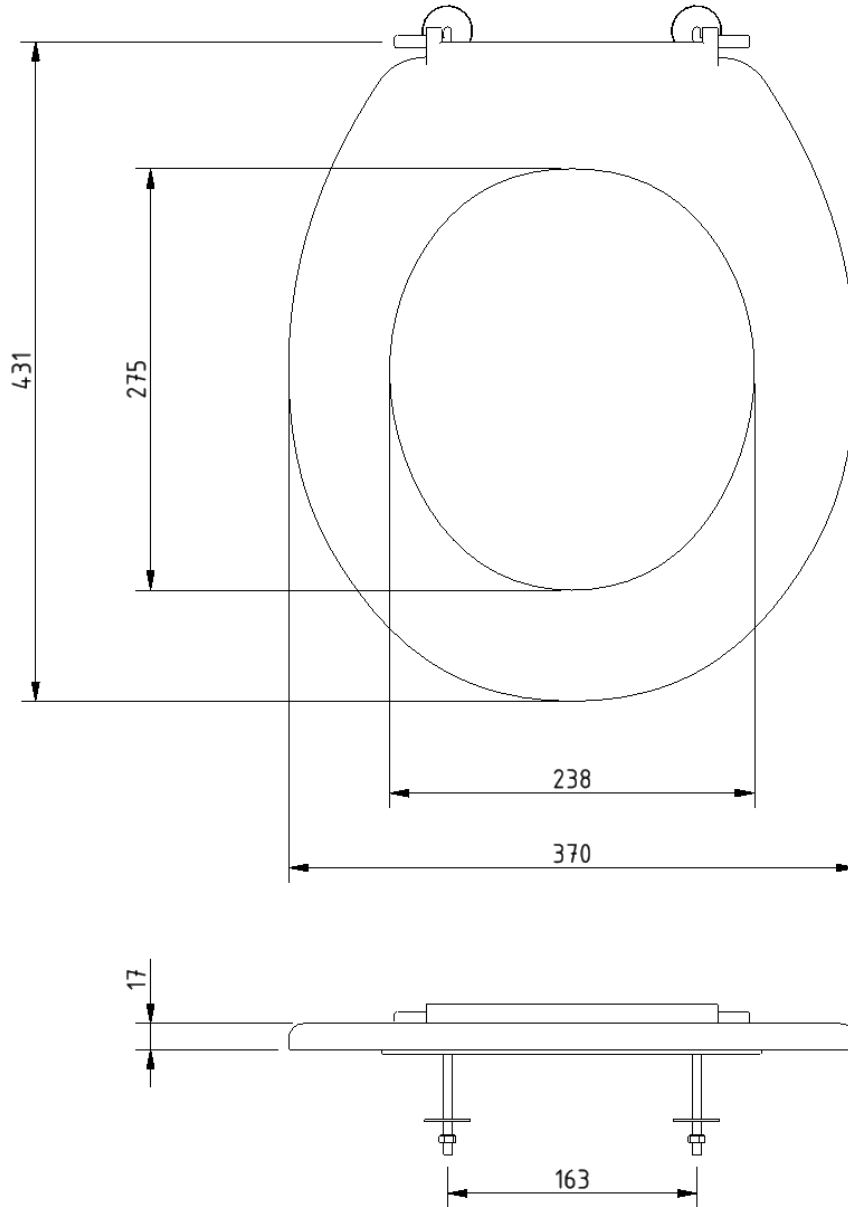
Toilet seat, ring only, stainless steel pillar hinge

Product code

260015/**

Replace ** with 2-character short code for chosen finish.
e.g., 260015/DB

Dimensions (mm)



Concealed cistern spatula lever



Product details

Warranty: 2 years

Max load: N/A

Doc M compliant: Yes

Suitable for wet areas: Yes

Features

- Complies with Part M of the Building Regulations
- Easy operation for users with limited dexterity
- For use with concealed cisterns

Finish options

Powder Coated



CP
Polished Chrome

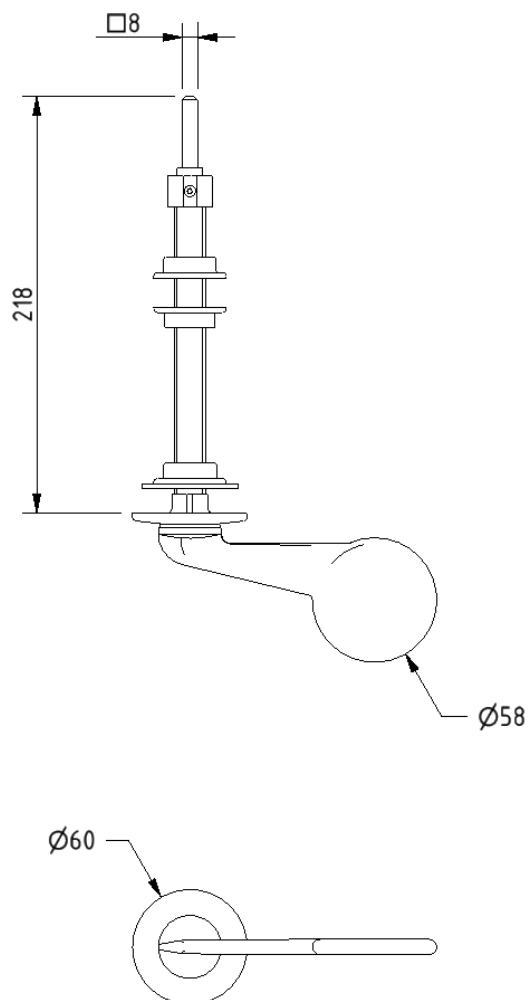
Product description

Concealed cistern spatula lever, 215mm spindle, polished chrome

Product code

P-000243-X00X

Dimensions (mm)



Standard Doc M basin



Product details

Warranty: Lifetime

Max load: N/A

Doc M compliant: Yes

Suitable for wet areas: Yes

Features

- Two tap holes or central tap hole options available
- Compact design to maximise space for a wheelchair user
- Complies with Part M of the Building Regulations (two tap hole only)
- Wall fixings included
- No overflow

Finish options



Product description

Standard Doc M basin, two tap holes, no overflow, white

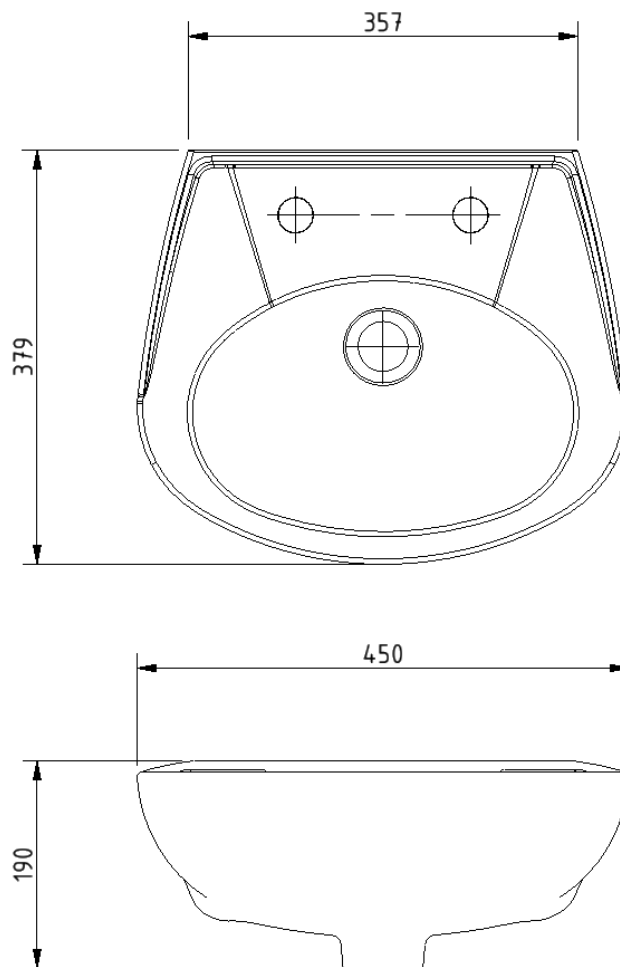
Standard Doc M basin, central tap hole, no overflow, white

Product code

B-BWBASIN-SAN

B-BASI1TH-SAN

Dimensions (mm)



FOR TAP HOLE POSITION DIMENSIONS SEE PRODUCT SPECIFIC MARKETING DRAWING

Basin waste with stainless steel grid



Product details

Warranty: 2 years

Max load: N/A

Doc M compliant: Yes

Suitable for wet areas: Yes

Features

- Slotted type for use with basins without overflow
- Manufactured from high quality materials
- Quick and simple installation

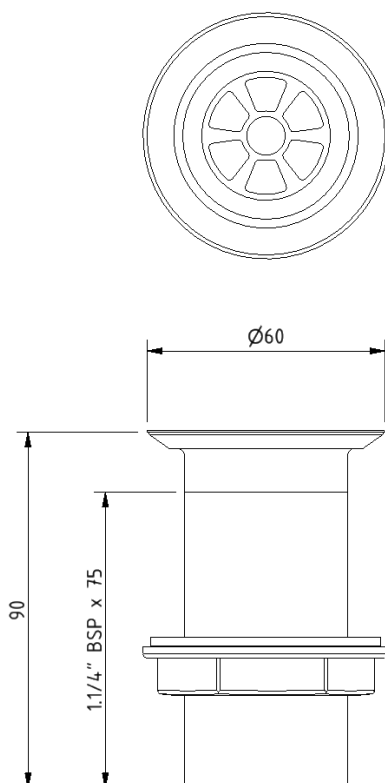
Product description

Basin waste, plastic body, white, stainless grid, unslotted, 1-1/4" BSP thread

Product code

P-000245-X00X

Dimensions (mm)



Fitzroy of London may occasionally need to change specification of products and/or kit contents and reserves the right to do so. We strive to keep our documentation up to date; however, we cannot guarantee this. We accept no liability for any information given on this data sheet.

Need some product advice? Contact our team of product specialists
+44(0)1642 710 719 | sales@fitzroyoflondon.com
www.fitzroyoflondon.com

Polished chrome sequential basin mixer tap



Product details

Warranty:	2 years
Max load:	N/A
Doc M compliant:	Yes
Suitable for wet areas:	Yes
Flexi tap tail connection (to tap body):	M10 thread
Flexi tap tail (onward connection):	½ inch BSP

Features

- Reg 4 certified (WRAS, NSF, Kiwa, etc.)
- Easy operation for users with limited dexterity
- Cold start

Finish options



CP
Polished Chrome

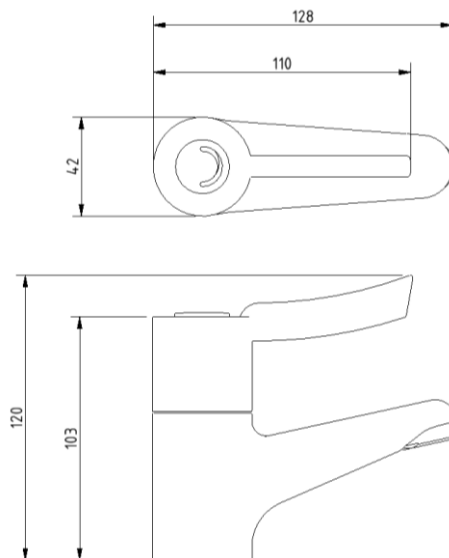
Product description

Sequential basin mixer tap, polished chrome

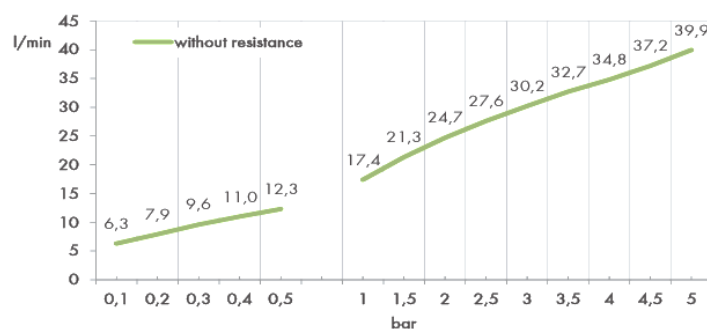
Product code

BPLMON

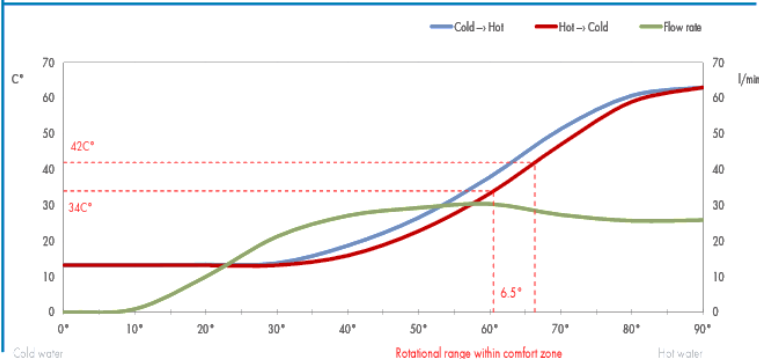
Dimensions (mm)



FLOW RATE CURVE



FLOW RATE & HYSTERESIS CURVES



Chrome plated hole stopper



Product details

Warranty: 2 years

Max load: N/A

Doc M compliant: N/A

Suitable for wet areas: Yes

Features

- Supplied with locknut
- To suit 13mm (1/2") hole
- Easy to fit

Finish options



CP
Polished Chrome

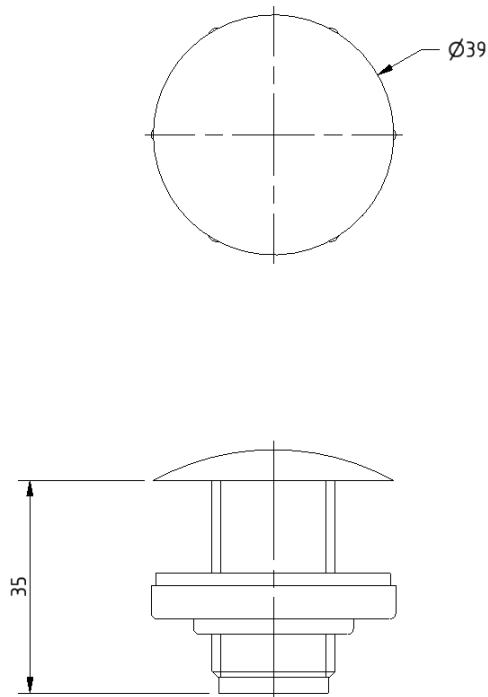
Product description

Chrome plated hole stopper

Product code

P-000239-X00X

Dimensions (mm)



Need some product advice? Contact our team of product specialists

+44(0)1642 710 719 | sales@fitzroyoflondon.com

www.fitzroyoflondon.com

DAT-P-000239-X00X Doc Rev 1

Fitzroy of London may occasionally need to change specification of products and/or kit contents and reserves the right to do so. We strive to keep our documentation up to date; however, we cannot guarantee this. We accept no liability for any information given on this data sheet.

Luxury straight stainless steel concealed fixing grab rail



Product details

Warranty:	5 Years
Max load:	150 kg
Doc M compliant:	Yes
Suitable for wet areas:	Yes

Features

- High quality stainless steel construction
- Concealed fixing grab rails
- Complies with Doc M of the Building Regulations
- Stylish 'T-Bar' design

Finish options

Mechanical



SS
Satin Stainless Steel



SP
Polished Stainless Steel

Powder Coated



MB
Matt Black (RAL 9005)

Product description

Product code

Luxury straight, stainless steel concealed fixing grab rail, 300mm

F22-0300-LSC-**

Luxury straight, stainless steel concealed fixing grab rail, 450mm

F22-0450-LSC-**

Luxury straight, stainless steel concealed fixing grab rail, 600mm

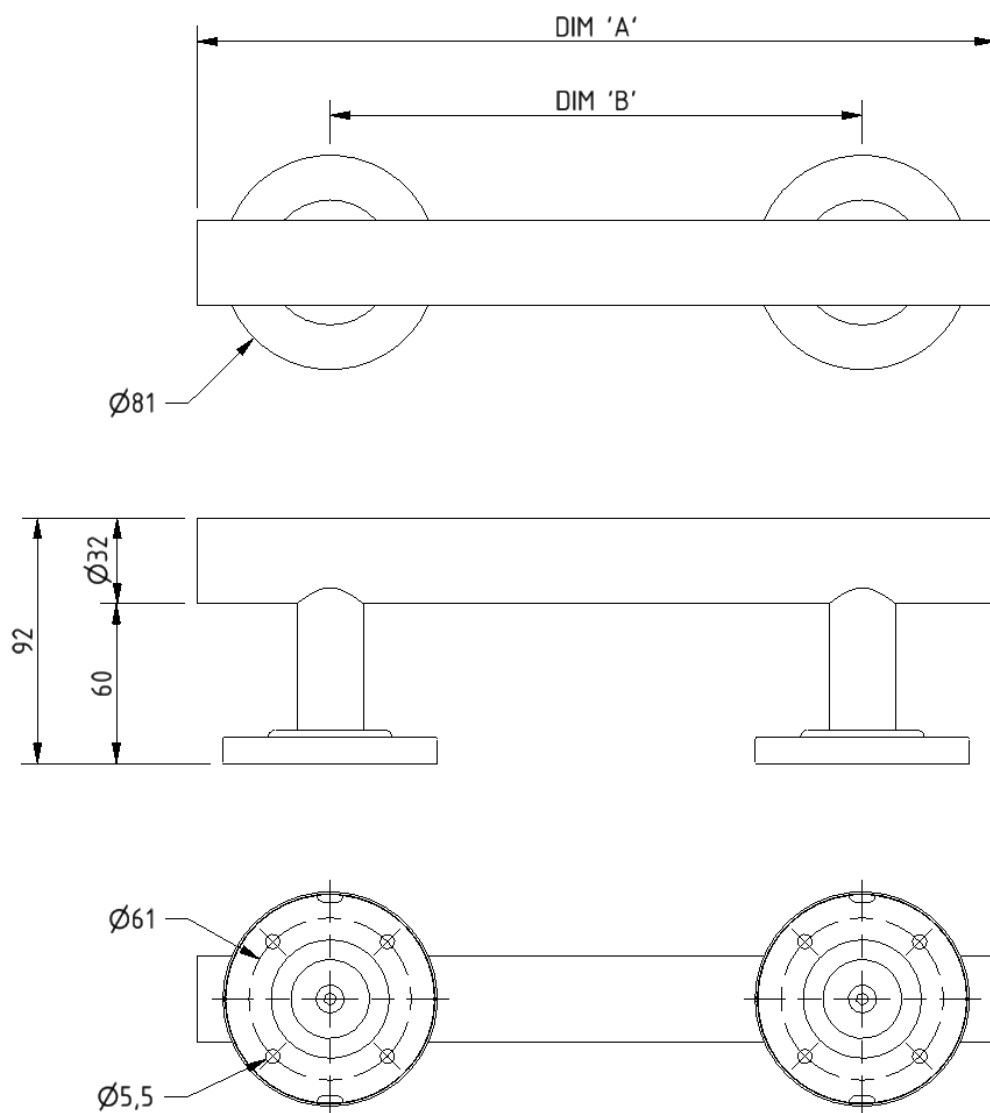
F22-0600-LSC-**

Luxury straight, stainless steel concealed fixing grab rail, 900mm

F22-0900-LSC-**

Replace ** with 2-character short code for chosen finish (Mechanical / Powder Coated).
e.g., F22-0300-LSC-SS

Dimensions (mm)



PRODUCT CODE	F22-0300-LSC	F22-0450-LSC	F22-0600-LSC	F22-0900-LSC
DIM 'A'	300	450	600	900
DIM 'B'	200	300	450	750

Contemporary single arm stainless steel friction hinged rail with concealed fixings



Product details

Warranty: 5 years

Max load: 90 kg

Doc M compliant: Yes

Suitable for wet areas: Yes

Features

- Contemporary single arm design
- Premium friction folding mechanism
- High quality stainless steel construction
- Complies with Part M of the Building Regulations

Finish options

Mechanical



SP

Polished Stainless Steel



SS

Satin Stainless Steel

Powder Coated



MB

Matt Black (RAL 9005)

Product description

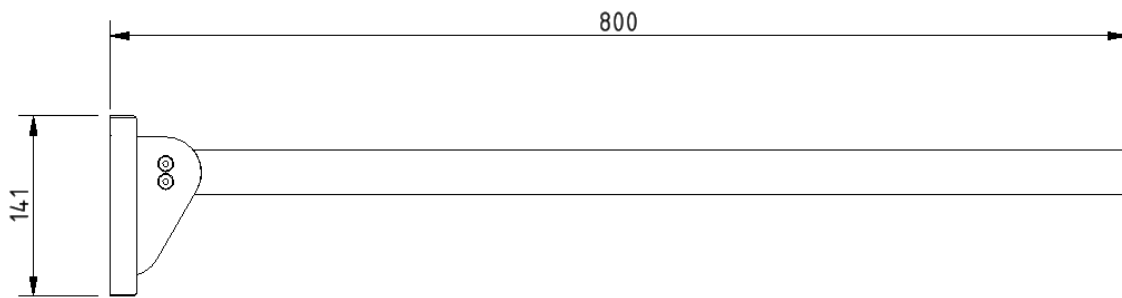
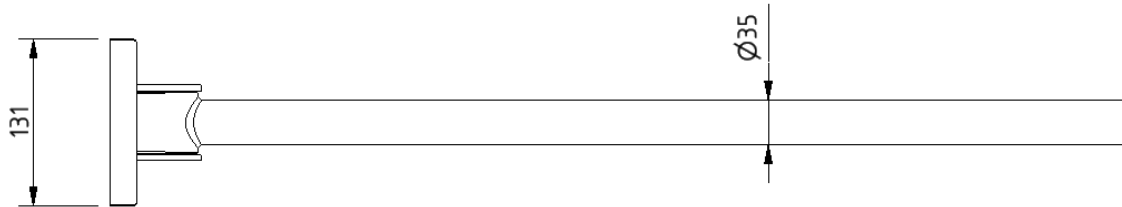
Contemporary single arm friction rail, stainless steel, concealed fixings

Product code

310480C/**

Replace ** with 2-character short code for chosen finish (Mechanical / Powder Coated).
e.g., 310480C/SP

Dimensions (mm)



Luxury stainless steel back rest rail and pad with concealed fixings



Product details

Warranty:	5 years
Max load:	N/A
Doc M compliant:	Yes
Suitable for wet areas:	Yes

Features

- Durable wipe clean polyurethane pad
- Non-corrosive stainless steel construction
- Saddle clips for fixing pad to rail
- Complies with Part M of the Building Regulations
- Stylish T-Bar design

Finish options

Mechanical



SS
Satin Stainless Steel



SP
Polished Stainless Steel

Powder coated



MB
Matt Black (RAL 9005)

Product description

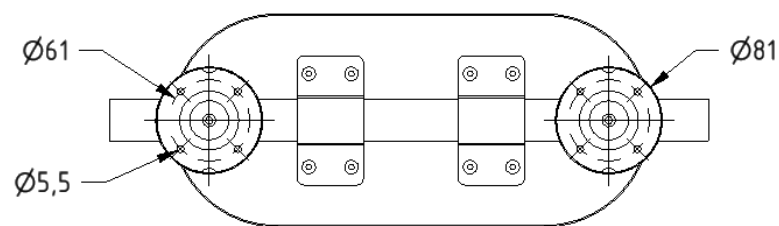
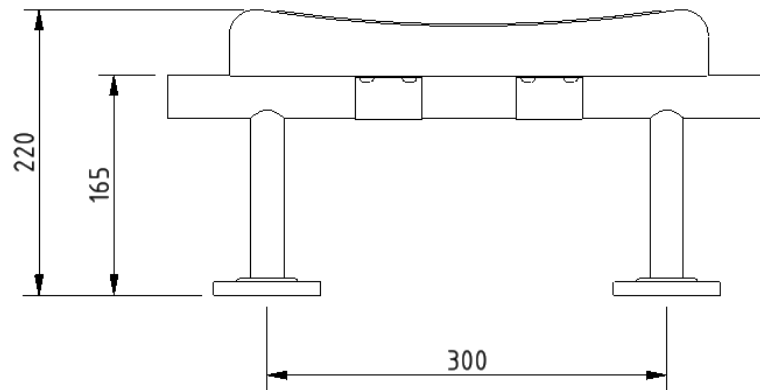
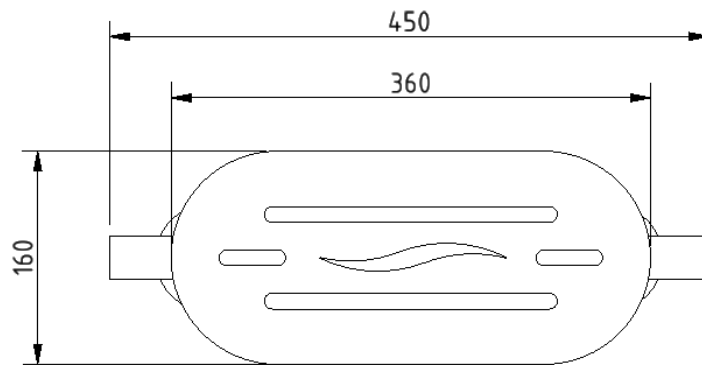
Luxury back rest rail, including pad, stainless steel, concealed fixings, overall projection 220mm

Product code

F22-B220-LSC-**

Replace ** with 2-character short code for chosen finish (Mechanical / Powder Coated).
e.g., F22-B220-LSC-SS

Dimensions (mm)



TMV3 inline thermostatic mixing valve



Product details

Warranty: 2 years

Max load: N/A

Doc M compliant: Yes

Suitable for wet areas: Yes

Features

- TMV3 approved & Reg 4 Certified (WRAS, NSF, Kiwa, etc.)
- Complies with Part M of the Building Regulations
- Building Regulations Part G compliant
- Highly resistant to scaling
- Anti-tamper proof head
- Complies with HTM04-01 D08
- TMV2 approved & complies with BS EN 1111 & BS EN 1287:2017
- Integral check valves & strainers

Finish options



CP
Polished Chrome

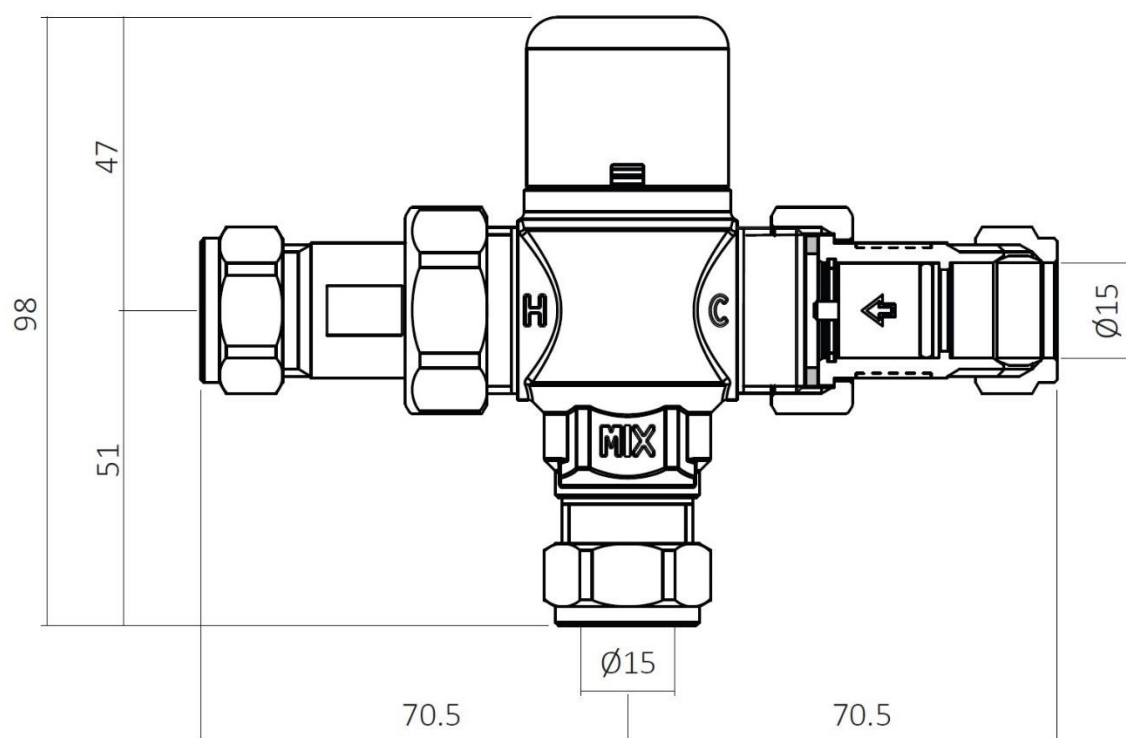
Product description

TMV3 inline thermostatic mixing valve - 15mm

Product code

BPLTMV

Dimensions (mm)



TMV3 thermostatic mixer tap

Product details

Warranty:	5 years
Max load:	N/A
Doc M compliant:	Yes
Suitable for wet areas:	Yes
Max Inlet Temp:	85°C
Factory Set Temp:	43°C
Max Operating Pressure:	10 BAR Static
Min Inlet Pressure:	0.2 BAR Dynamic

Features

- Reg 4 Certified (WRAS, NSF, Kiwa, etc.)
- TMV3 Approved
- Safe touch body
- Copper inlet tails
- Self-draining spout
- Complies with Part M of the Building Regulations
- Easy operation for users with limited dexterity
- System Installation: Unvented, Pressurised, Gravity & Combination

Finish options

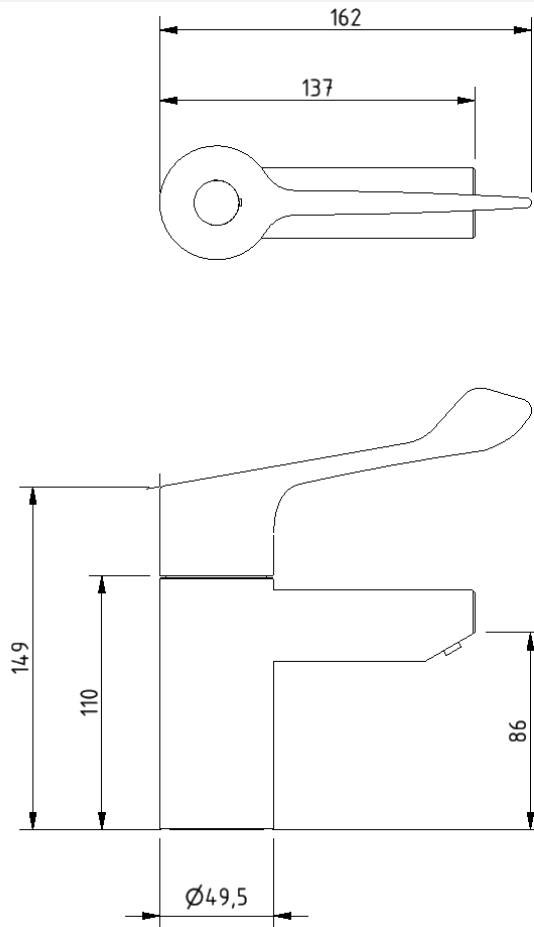

CP
Polished Chrome

Product description
Product code

TMV3 thermostatic mixer tap, polished chrome

TAPTMOV/CP

Dimensions (mm)



FLOW RATE FOR TAPTMV

