

Low level Doc M ware set with ring only seat



Product details

- Warranty: See individual products
- Doc M compliant: Yes
- Suitable for wet areas: Yes

Features

- Complies with Part M of the Building Regulations
- Low level pan & cistern assembly
- WRAS approved inlet valve and syphon

Finish options

WH

White  
RAL 9016

DB

Dark blue  
RAL 5011

DG

Dark grey  
RAL 7016

GY

Grey  
RAL 7005

Product description

Product code

Low level Doc M ware set, pan & cistern assembly, ring only seat, white (RAL 9016)	LLWARESET/WH
Low level Doc M ware set, pan & cistern assembly, ring only seat, dark blue (RAL 5011)	LLWARESET/DB
Low level Doc M ware set, pan & cistern assembly, ring only seat, dark grey (RAL 7016)	LLWARESET/DG
Low level Doc M ware set, pan & cistern assembly, ring only seat, grey (RAL 7005)	LLWARESET/GY
Low level Doc M ware set, pan & lockable cistern assembly, ring only seat, white (RAL 9016)	LLWARESET/LC/WH
Low level Doc M ware set, pan & lockable cistern assembly, ring only seat, dark blue (RAL 5011)	LLWARESET/LC/DB
Low level Doc M ware set, pan & lockable cistern assembly, ring only seat, dark grey (RAL 7016)	LLWARESET/LC/DG
Low level Doc M ware set, pan & lockable cistern assembly, ring only seat, grey (RAL 7005)	LLWARESET/LC/GY

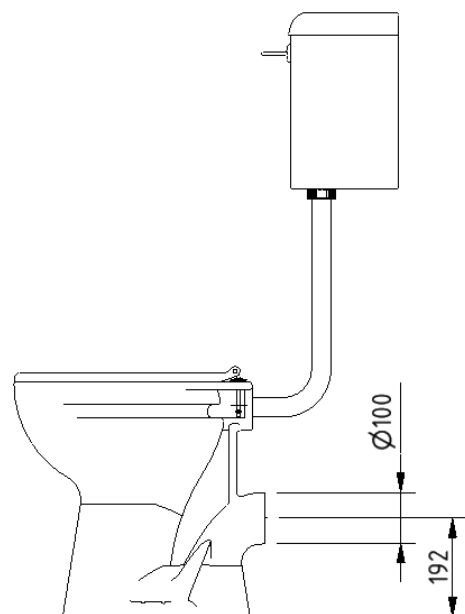
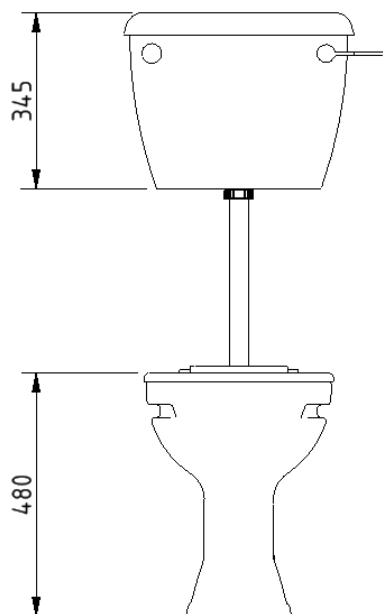
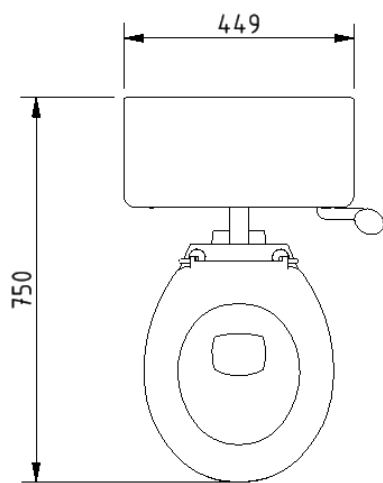
Disclaimer

NYMAS Group makes every effort to ensure that the information provided on this data sheet is correct. However, we cannot guarantee this, and accept no liability for any information or advice given on this data sheet.

## Pack contents

- 1 x Low level box rim Doc M pan
- 1 x Low level cistern for box rim pan (optional lockable lid)
- 1 x Low level cistern fittings pack with Doc M spatula lever and flush pipe
- 1 x Ring only toilet seat

## Dimensions (mm)



Low level box rim Doc M pan



Product details

Warranty:	Lifetime
Max rated load:	n/a
Doc M compliant:	Yes
Suitable for wet areas:	Yes

Features

- Complies with Part M of the Building Regulations
- UKCA and CE compliant
- Comfort height to allow easier side transfer from wheelchair

Finish options



White  
RAL 9016

Product description

Product code

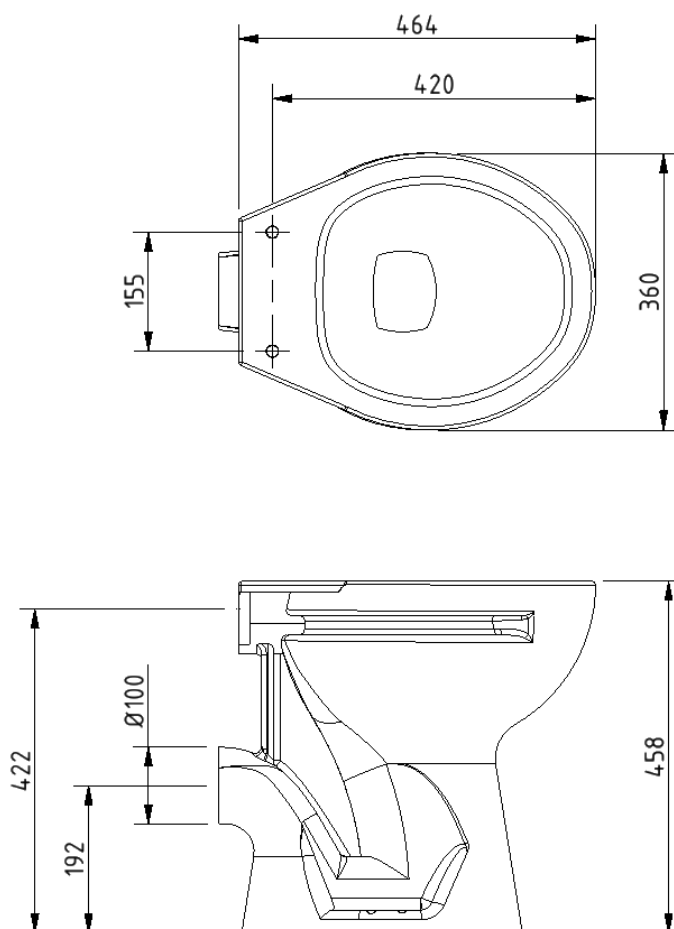
Low level box rim Doc M pan, white

B-BWPANLL-1

Disclaimer

NYMAS Group makes every effort to ensure that the information provided on this data sheet is correct. However, we cannot guarantee this, and accept no liability for any information or advice given on this data sheet.

## Dimensions (mm)



Low level cistern for box rim pan



Product details

Warranty:	Lifetime
Max rated load:	n/a
Doc M compliant:	Yes
Suitable for wet areas:	Yes

Features

- Complies with Part M of the Building Regulations
- UKCA & CE compliant
- Suitable for front lever
- Bottom inlet
- Universal - either left or right handed
- Lockable lid option

Finish options



White  
RAL 9016

Product description

Product code

Low level cistern for box rim pan

NY01-SW-21090-WH

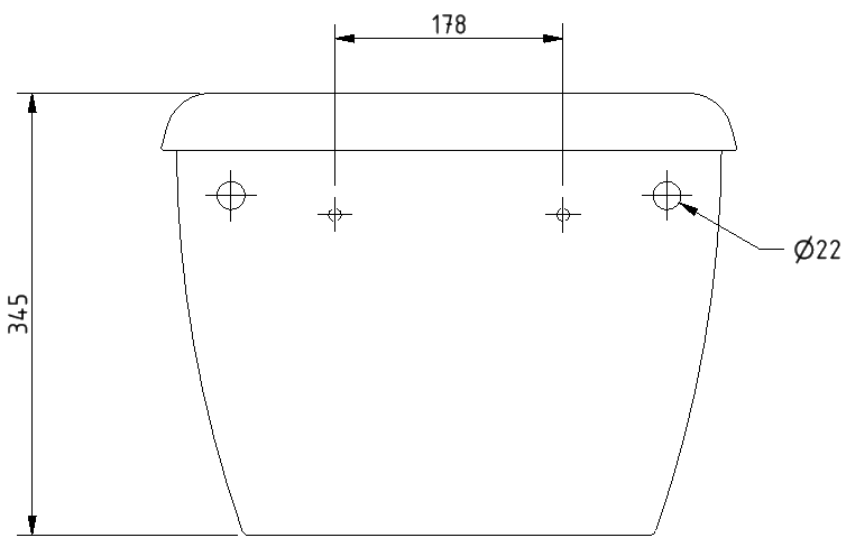
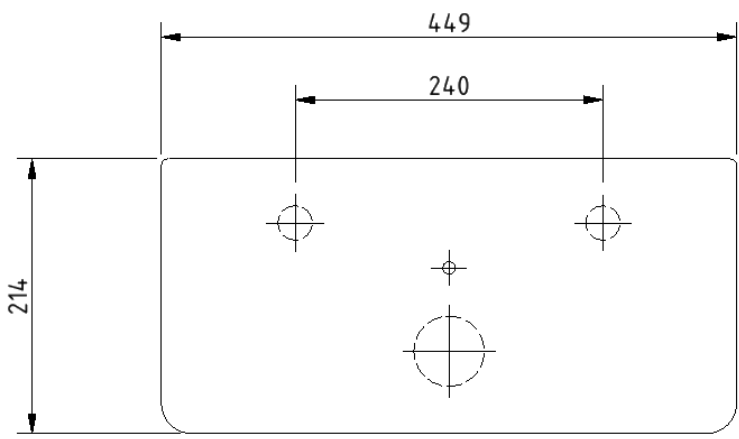
Low level cistern with lockable lid for box rim pan

NY01-SW-21099-WH

Disclaimer

NYMAS Group makes every effort to ensure that the information provided on this data sheet is correct. However, we cannot guarantee this, and accept no liability for any information or advice given on this data sheet.

Dimensions (mm)



Toilet seat, ring only, stainless steel pillar hinge



Product details

Warranty:	2 years
Max rated load:	150 kg
Doc M compliant:	Yes
Suitable for wet areas:	Yes

Features

- Complies with Part M of the Building Regulations
- Anti-bacterial, strong and durable Duroplast seat
- Ergonomic and comfortable shape
- Stainless steel hinge
- Adjustable locating buffers
- Fits close coupled, low level, back to wall and wall hung pans

Finish options



White  
RAL 9016



Dark blue  
RAL 5011



Dark grey  
RAL 7016



Grey  
RAL 7005

Product description

Product code

Toilet seat, ring only, stainless steel pillar hinge, dark blue (RAL 5011)	260015/DB
Toilet seat, ring only, stainless steel pillar hinge, dark grey (RAL 7016)	260015/DG
Toilet seat, ring only, stainless steel pillar hinge, grey (RAL 7005)	260015/GY
Toilet seat, ring only, stainless steel pillar hinge, white (RAL 9016)	260015/WH

Disclaimer

NYMAS Group makes every effort to ensure that the information provided on this data sheet is correct. However, we cannot guarantee this, and accept no liability for any information or advice given on this data sheet.

Dimensions (mm)

